

V850 JTAG OCD Checker

User's Manual

Supported Devices:
V850 Family

All information contained in these materials, including products and product specifications, represents information on the product at the time of publication and is subject to change by Renesas Electronics Corp. without notice. Please review the latest information published by Renesas Electronics Corp. through various means, including the Renesas Electronics Corp. website (<http://www.renesas.com>).

Notice

1. Descriptions of circuits, software and other related information in this document are provided only to illustrate the operation of semiconductor products and application examples. You are fully responsible for the incorporation of these circuits, software, and information in the design of your equipment. Renesas Electronics assumes no responsibility for any losses incurred by you or third parties arising from the use of these circuits, software, or information.
2. Renesas Electronics has used reasonable care in preparing the information included in this document, but Renesas Electronics does not warrant that such information is error free. Renesas Electronics assumes no liability whatsoever for any damages incurred by you resulting from errors in or omissions from the information included herein.
3. Renesas Electronics does not assume any liability for infringement of patents, copyrights, or other intellectual property rights of third parties by or arising from the use of Renesas Electronics products or technical information described in this document. No license, express, implied or otherwise, is granted hereby under any patents, copyrights or other intellectual property rights of Renesas Electronics or others.
4. You should not alter, modify, copy, or otherwise misappropriate any Renesas Electronics product, whether in whole or in part. Renesas Electronics assumes no responsibility for any losses incurred by you or third parties arising from such alteration, modification, copy or otherwise misappropriation of Renesas Electronics product.
5. Renesas Electronics products are classified according to the following two quality grades: "Standard" and "High Quality". The recommended applications for each Renesas Electronics product depends on the product's quality grade, as indicated below.
"Standard": Computers; office equipment; communications equipment; test and measurement equipment; audio and visual equipment; home electronic appliances; machine tools; personal electronic equipment; and industrial robots etc.
"High Quality": Transportation equipment (automobiles, trains, ships, etc.); traffic control systems; anti-disaster systems; anti-crime systems; and safety equipment etc.

Renesas Electronics products are neither intended nor authorized for use in products or systems that may pose a direct threat to human life or bodily injury (artificial life support devices or systems, surgical implantations etc.), or may cause serious property damages (nuclear reactor control systems, military equipment etc.). You must check the quality grade of each Renesas Electronics product before using it in a particular application. You may not use any Renesas Electronics product for any application for which it is not intended. Renesas Electronics shall not be in any way liable for any damages or losses incurred by you or third parties arising from the use of any Renesas Electronics product for which the product is not intended by Renesas Electronics.
6. You should use the Renesas Electronics products described in this document within the range specified by Renesas Electronics, especially with respect to the maximum rating, operating supply voltage range, movement power voltage range, heat radiation characteristics, installation and other product characteristics. Renesas Electronics shall have no liability for malfunctions or damages arising out of the use of Renesas Electronics products beyond such specified ranges.
7. Although Renesas Electronics endeavors to improve the quality and reliability of its products, semiconductor products have specific characteristics such as the occurrence of failure at a certain rate and malfunctions under certain use conditions. Further, Renesas Electronics products are not subject to radiation resistance design. Please be sure to implement safety measures to guard them against the possibility of physical injury, and injury or damage caused by fire in the event of the failure of a Renesas Electronics product, such as safety design for hardware and software including but not limited to redundancy, fire control and malfunction prevention, appropriate treatment for aging degradation or any other appropriate measures. Because the evaluation of microcomputer software alone is very difficult, please evaluate the safety of the final products or systems manufactured by you.
8. Please contact a Renesas Electronics sales office for details as to environmental matters such as the environmental compatibility of each Renesas Electronics product. Please use Renesas Electronics products in compliance with all applicable laws and regulations that regulate the inclusion or use of controlled substances, including without limitation, the EU RoHS Directive. Renesas Electronics assumes no liability for damages or losses occurring as a result of your noncompliance with applicable laws and regulations.
9. Renesas Electronics products and technology may not be used for or incorporated into any products or systems whose manufacture, use, or sale is prohibited under any applicable domestic or foreign laws or regulations. You should not use Renesas Electronics products or technology described in this document for any purpose relating to military applications or use by the military, including but not limited to the development of weapons of mass destruction. When exporting the Renesas Electronics products or technology described in this document, you should comply with the applicable export control laws and regulations and follow the procedures required by such laws and regulations.
10. It is the responsibility of the buyer or distributor of Renesas Electronics products, who distributes, disposes of, or otherwise places the product with a third party, to notify such third party in advance of the contents and conditions set forth in this document, Renesas Electronics assumes no responsibility for any losses incurred by you or third parties as a result of unauthorized use of Renesas Electronics products.
11. This document may not be reproduced or duplicated in any form, in whole or in part, without prior written consent of Renesas Electronics.
12. Please contact a Renesas Electronics sales office if you have any questions regarding the information contained in this document or Renesas Electronics products, or if you have any other inquiries.

(Note 1) "Renesas Electronics" as used in this document means Renesas Electronics Corporation and also includes its majority-owned subsidiaries.

(Note 2) "Renesas Electronics product(s)" means any product developed or manufactured by or for Renesas Electronics.

Contents

1. Overview	4
1.1 Details of tested items.....	4
1.2 Test result	4
2. How to Startup.....	5
2.1 V850 JTAG OCD Checker startup	5
2.2 Preparation of V850 JTAG OCD Checker.....	5
2.3 Emulator test.....	6
2.4 DCK wave form test	6
3. Explanation of Each Area and Button	8
4. Version Confirmation	11
5. Corrective Actions in Case of NG.....	12
5.1 V850 JTAG OCD emulator test.....	12
5.1.1 When V850 E/V850ES is chosen	12
5.1.2 When V850E2M/V850E2S is chosen	15
5.2 DCK waveform test.....	17
6. Changes from N-Wire Checker V1.30/V2.10.....	18
7. Restrictions.....	19

1. Overview

V850 JTAG OCD Checker is Emulator Utility software for V850 for simply testing the PC-connected OCD emulator (QB-V850MINI(L) , IE-V850E1-CD-NW, E1 Emulator, E20 Emulator) and the target CPU operation.

1.1 Details of tested items

This section describes the test items that are performed by the V850 JTAG OCD Checker.

◆ Emulator test

OCD Emulator connection, initialization, and target CPU register read/write are checked.

The test results can be output to the log viewer and a log file.

• Connect Test

OCD Emulator is started up and the connection with the target CPU is tested.

• DCU Reg Test

0x00000000, 0xFFFFFFFF, 0x55555555, 0xAAAAAAAA, 0x33333333, and 0xCCCCCCCC are written in that order to the monitor register in the on-chip debug unit and the values are read to check if they have been read/written normally.

• CPU Reg Test

A target CPU register read/write test is performed using the monitor program.

(Target CPU registers: r1, r2, r3/sp, r4/gp, r5, r6, r7, r8, r9, r10, r11, r12, r13, r14, r15, r16, r17, r18, r19, r20, r21, r22, r23, r24, r25, r26, r27, r28, r29, r30/ep, r31/lp, eipc, eipsw, fepc, fepsw, psw, ctpc, ctpsw, dbpc, dbpsw, ctbp, asid, DIR, BPC0, BPAV0, BPAM0, BPDV0, BPDV1, BPC1, BPAV1, BPAM1, BPDV1, BPDV1, and pc)

Release the security setting using the ID code before accessing a register, if necessary.

• Test All

Connect Test, DCU Reg Test, and CPU Reg Test is performed in that order.

◆ DCK waveform test

The data set from OCD Emulator is output to the DDI signal in order to check the waveform of the DCK signal on the target system with an oscilloscope.

1.2 Test result

The results of the tests in **Emulator Test** are output to the log viewer and a log file. If the test results are NG, refer to **5. Corrective Actions in Case of NG** for general causes and corrective actions.

2. How to Startup

2.1 V850 JTAG OCD Checker startup

Start the V850 JTAG OCD Checker.

- Apply power to the OCD emulator and then the target board.
- Terminate Debugger if it is active.

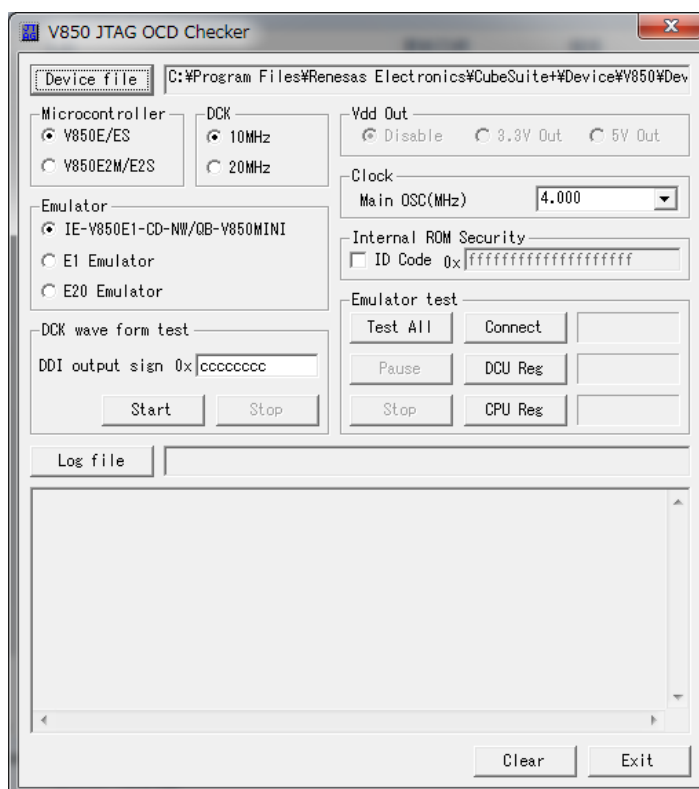


Figure 1. V850 JTAG OCD Checker Main Dialog Box

2.2 Preparation of V850 JTAG OCD Checker

- (1) Click the [Device file] button and specify the device file corresponding to the target device used.
- (2) Select the core series for target CPU in the **Microcontroller** area.
Please choose either [V850E/ES] core series or [V880E2M/E2S] core series.
- (3) Select the JTAG Clock(DCK) in the **DCK** area.
Selection is required only when [V850E/ES] core series in the **Microcontroller** area is chosen.

(4) Select the OCD Emulator in the **Emulator** area.

- IE-V850E1-CD-NW/QB-V850MINI : When using with IE-V850E1-CD-NW and QB-V850MINI(L)
- E1 Emulator : When using with E1 Emulator
- E20 Emulator : When using with E20 Emulator

(5) Please choose from OCD Emulator the power supply supplied to target system.

Selection is required only when [E1 Emulator] in the **Emulator** area is chosen.

(6) Input the frequency of the main clock input to the device in the **Clock** area.

Selection is required only when [V850E/ES] core series in the **Microcontroller** area is chosen.

(7) When using a device having the security function in single-chip mode, check the “ID code” checkbox and input the ID code in the **Internal ROM Security** area.

When [V850E/ES] core series in the **Microcontroller** area is chosen: ID code is 10 bytes

When [V850E2M/E2S] core series in the **Microcontroller** area is chosen: ID code is 12 bytes

The **Connect** and **DCU Reg** tests are possible even if the ID code is not set.

2.3 Emulator test

(1) Click the [Test All] button.

Each item can be tested by clicking the [Connect], [DCU reg], or [CPU reg] button independently.

(2) When the test has finished, confirm that OK is displayed for each test item.

If NG is displayed, refer to **5 Corrective Actions in Case of NG**.

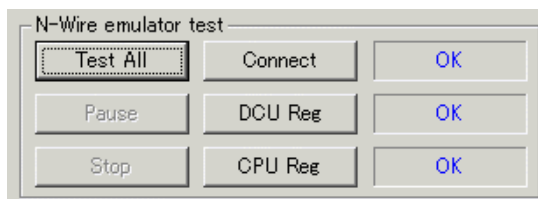


Figure 2. Display When All Test Results are OK

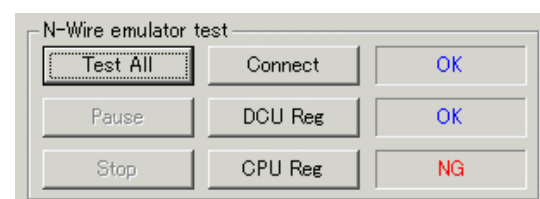


Figure 3. Display When Error Is Detected

2.4 DCK wave form test

(1) Connect the DCK signal of the target board to the oscilloscope probe.

Remark Switch off the power supply of the OCD emulator and target system before performing this connection.

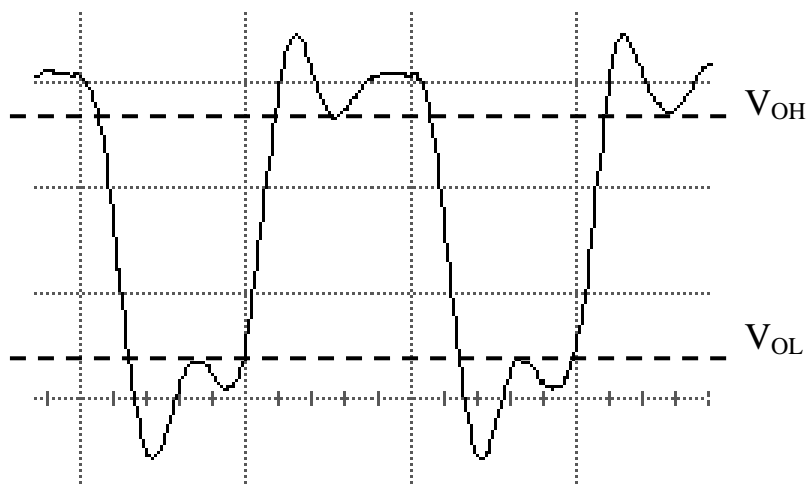
(2) Input 4-byte data (0xCCCCCCC at shipment) in the **DDI output signal for oscilloscope** area and then click the [Start] button.

This function can be used, when [V850 E/ES] is chosen in [Microcontroller] area and

[IE-V850E1-CD-NW/QB-V850MINI] is chosen in [Emulator] area.

- (3) Monitor the waveform on the oscilloscope.
- (4) Check whether the waveform noise (reflection) is within the standard range below.

Remark If it is not within the standard range, refer to **5. Corrective Actions in Case of NG**.



V_{OH} , V_{OL} : Refer to the data sheet supplied with the emulator.

Caution The data is output from the lowermost bit.

Even if data from the target board changes, the same data is always output because data is shifted inside the emulator.

3. Explanation of Each Area and Button

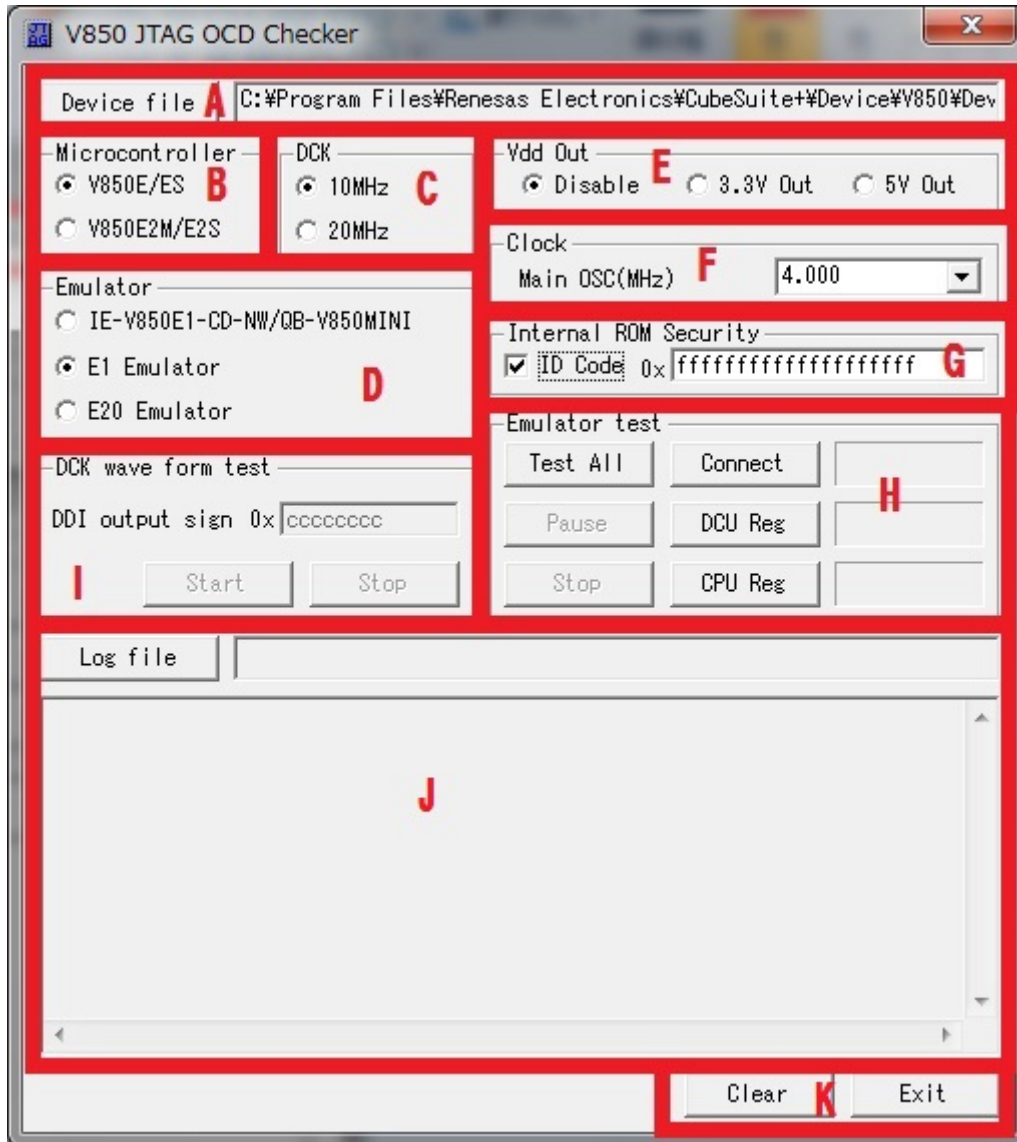


Figure 4. Areas in V850 JTAG OCD Checker Main Dialog Box

A. Operating environment setting area

Object	Function
[Device file] button	Displays the dialog box for specifying the device file name of the target CPU.
Text area	Displays the device file name of the target CPU and its path. Specify this at V850 JTAG OCD Checker startup.

B. Microcontroller selecting area

Object	Function
V850E/ES	Select this item when V850E/ES core series is used.
V850E2M/E2S	Select this item when V850E2M/E2S core series is used.

C. DCK selecting area

(Selection is required only when [V850E/ES] core series in the **Microcontroller** area is chosen.)

Object	Function
20MHz	Select this item when DCK = 20 MHz is set via the debugger.
10MHz	Select this item when DCK = 10 MHz is set via the debugger. ("DCK = 10 MHz" is the setting for the case where the V850 JTAG OCD Checker is used for the self-check board (supplied with the QB-V850MINI(L)) or for a device that does not operate unless DCK = 10 MHz, or for cases where the operation is unstable with DCK = 20 MHz, like when a long (2 m) N-Wire cable is used.)

D. Emulator selecting area

Object	Function
IE-V850E1-CD-NW/ QB-V850MINI	Select this item when the IE-V850E1-CD-NW or QB-V850MINI(L) is used.
E1 Emulator	Select this item when the E1 Emulator is used.
E20 Emulator	Select this item when the E20 Emulator is used.

E. Vdd Out selecting area

(Selection is required only when [E1 Emulator] in the **Emulator** area is chosen.)

Object	Function
Disable	Select this item when the IE-V850E1-CD-NW or QB-V850MINI(L) is used.
3.3V Out	Select this item when from OCD Emulator the power supply supplied to target system.(3.3V)
5V Out	Select this item when from OCD Emulator the power supply supplied to target system.(5V)

F. Main clock frequency setting area

(Selection is required only when [V850E/ES] core series in the **Microcontroller** area is chosen.)

Object	Function
Frequency setting area	Input the frequency of the main clock input to the device.

G. Internal ROM Security ID code specification area

Object	Function
ID code setting box	Check the check box when a device with the security function is used in the single-chip mode.
ID code setting area	Input an ID code when a product device with the security function is used in the single-chip mode.

H. OCD emulator test area

Object	Function
[Test All] button	Executes Connect, DCR Reg, and CPU Reg tests in sequence.
[Pause] button	Pauses the test. (Testing resumes when this button is clicked again.)
[Stop] button	Stops the test.
[Connect] button	Starts up the N-Wire emulator, opens communication with the target, and executes testing for initialization.
[DCU Reg] button	Performs testing for DCU register read/write.
[CPU Reg] button	Performs testing for CPU register read/write.

I. DCK waveform test area

Object	Function
DDI output signal for oscilloscope area	Sets the data of the DDI signal output from the OCD emulator. When a value of 0xffffffff or greater is set, an error occurs when the [Start] button is pressed.
[Start] button	Outputs the value (0 to 0xffffffff) specified in the DDI output signal for oscilloscope text area.
[Stop] button	Stops the signal for value testing specified in the DDI output signal for oscilloscope text area.

Object	Function
DDI output signal for oscilloscope area	Sets the data of the DDI signal output from the OCD emulator. When a value of 0xffffffff or greater is set, an error occurs when the [Start] button is pressed.
[Start] button	Outputs the value (0 to 0xffffffff) specified in the DDI output signal for oscilloscope text area.
[Stop] button	Stops the signal for value testing specified in the DDI output signal for oscilloscope text area.

J. Log viewer area

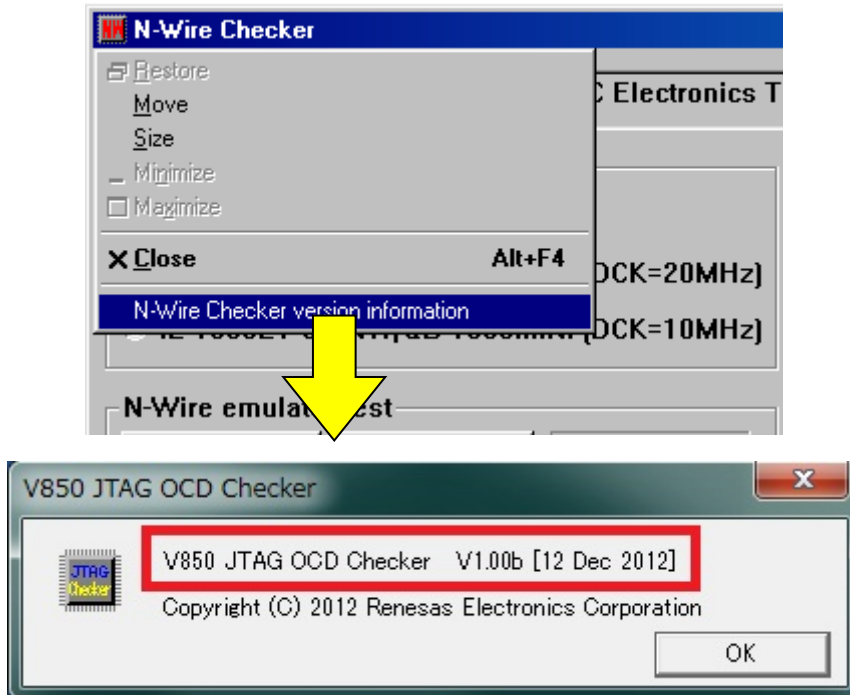
Object	Function
[Log file] button	Displays the dialog box for specifying the test result log file name. The log file is overwritten when the V850 JTAG OCD Checker is started up. A log file is created in the current folder when the file path name is not specified.
Text area	Displays the log file name and its path.
Log viewer area	Displays the test results as a log (up to approx. 21,000 characters). The same contents are output to the log file specified in the log file text area.

K. Other

Object	Function
[Exit] button	Terminates V850 JTAG OCD Checker.
[Clear] button	Clears the log viewer display. If a log file name is specified in the log file text area, the log file contents are not cleared.

4. Version Confirmation

Select the "V850 JTAG OCD Checker version information" menu on the system menu.



5. Corrective Actions in Case of NG

5.1 V850 JTAG OCD emulator test

The corrective actions for errors and corresponding error numbers are shown below.

Note that errors may occur due to causes other than those below.

5.1.1 When V850 E/V850ES is chosen

Note *1: Selection is required only when [E1 Emulator] in the **Emulator** area is chosen.

Italic font: Selection is required only when [IE-V850E1-CD-NW/QB-V850MINI] in the **Emulator** area is chosen.

No.	Error No.	Error Messages and Corrective Action
1	0x0100	[Driver couldn't be opened.] The PC and Emulator may be not connected. The PC may be not able to recognize after it has entered suspend mode, so restart the PC. The device driver may be not installed. Install the driver.
2	0x0105	[Failed in reading device file (dxxxx.800).] The necessary file may be damaged. Reinstall the device file.
3	0x0109	[USB access failed.] Exit this utility and re-connect up Emulator.
4	0x010a 0x01a6	[EXEC already work.] Exit the debugger.
5	0x01a0	[Processing of a monitor was not completed to within a time.] Confirm that the resonator oscillates normally. Confirm that the correct value is set to MainOSC. <i>Check the noise level using a DCK waveform test.</i> The problem may also be caused by an internal chip problem. Check the connection of the N-Wire I/F(DCK, DMS, DDI, DDO, DRST).
6	0x03a0	[The Power supply of target is OFF.] Check the target power supply. Check the cable connecting the Emulator and target board. Check that the VDD signal is input to the connector of the target board.
7	0x0400	[Incorrect value of MainOSC.] MainOSC can't be set to 0.
8	0x0B04	[Although the power supply of target is ON, Vdd Out is set Enable.] (*1) Set Vdd Out as Disable, or shut off the power supply of the target.
9	0x0c01	[During access of register, CPU did timeout.] Confirm that the resonator oscillates normally. Confirm that the correct value is set to MainOSC. <i>Check the noise level using a DCK waveform test.</i> The problem may also be caused by an internal chip problem. Check the connection of the N-Wire I/F(DCK, DMS, DDI, DDO, DRST).
10	0x0c02	[During access of memory, CPU did timeout.] Confirm that the resonator oscillates normally. Confirm that the correct value is set to MainOSC. <i>Check the noise level using a DCK waveform test.</i> The problem may also be caused by an internal chip problem. Check the connection of the N-Wire I/F(DCK, DMS, DDI, DDO, DRST).
11	0x0c03	[During access of I/O register, CPU did timeout.] Confirm that the resonator oscillates normally. Confirm that the correct value is set to MainOSC. <i>Check the noise level using a DCK waveform test.</i> The problem may also be caused by an internal chip problem. Check the connection of the N-Wire I/F(DCK, DMS, DDI, DDO, DRST).

No.	Error No.	Error Messages and Corrective Action
12	0x0c23	[Bus hold under continuation.] Confirm that the resonator oscillates normally. Confirm that the correct value is set to MainOSC. <i>Check the noise level using a DCK waveform test.</i> The problem may also be caused by an internal chip problem. Check the connection of the N-Wire I/F(DCK, DMS, DDI, DDO, DRST).
13	0x0c24	[It couldn't shift to debug mode.] Confirm that the resonator oscillates normally. Confirm that the correct value is set to MainOSC. Check the clock signal. This may be caused by a stopped clock or a slow clock. Check the connection of the N-Wire I/F(DCK, DMS, DDI, DDO, DRST).
14	0x0c2e	[During access of flash memory information, CPU did timeout.] Confirm that the correct device is selected. The problem may also be caused by an internal chip problem.
15	0x0c2f	[During access of flash memory information, the response from CPU was not right.] Confirm that the correct device is selected. The problem may also be caused by an internal chip problem.
16	0x0c35	[IRAM cannot be accessed.] Confirm that the correct device file(IRAM size) is selected.
17	0x0c43	[Connection of Emulator couldn't be performed.] <i>The switch setting may be wrong if a desktop computer is used and two or more PC cards are inserted.</i> Check the setting. The Emulator may also have malfunctioned.
18	0x0c70 0x0c76 0x0c77	[It has not accessed to DCU.] A DCU access error may occur when the DCK = 20 MHz setting is selected due to noise in the N-Wire I/F(DCK, DMS, DDI, DDO, DRST) or because the specification is not satisfied, so select the DCK = 10 MHz setting. Check the power to the device and the interface voltage. Check the connection of the signal lines (N-Wire I/F). The device executes the program in user mode until the [Start] button is clicked in the V850 JTAG OCD Checker. Therefore, the device cannot be connected to the Emulator if a program to clear the OCDM0 bit to 0 is under execution. When using a device with the OCDM0 bit (OCDM register), set the OCDM0 bit to 1. <i>Check the noise level using a DCK waveform test.</i>
19	0x0c71	[Reset couldn't be performed.] Confirm that the resonator oscillates normally. Confirm that the correct value is set to MainOSC. Check the clock signal. This may be caused by a stopped clock or a slow clock. Check the connection of the N-Wire I/F(DCK, DMS, DDI, DDO, DRST).
20	0x0c72	[Monitor memory couldn't be accessed.] Confirm that the resonator oscillates normally. Confirm that the correct value is set to MainOSC. <i>Check the noise level using a DCK waveform test.</i> The problem may also be caused by an internal chip problem. Check the connection of the N-Wire I/F(DCK, DMS, DDI, DDO, DRST).
21	0x0c73	[Monitor execution couldn't be performed.] Confirm that the resonator oscillates normally. Confirm that the correct value is set to MainOSC. <i>Check the noise level using a DCK waveform test.</i> The problem may also be caused by an internal chip problem. Check the connection of the N-Wire I/F(DCK, DMS, DDI, DDO, DRST).
22	0x0c74	[CPU register cannot be accessed.] Confirm that the correct device is selected. Confirm that the resonator oscillates normally. Confirm that the correct value is set to MainOSC. <i>Check the noise level using a DCK waveform test.</i> The problem may also be caused by an internal chip problem. Check the connection of the N-Wire I/F(DCK, DMS, DDI, DDO, DRST).
23	0x0ca2 0x0ca3	[Incorrect selection of a device file] Confirm that the correct device is selected.
24	0xf603	[Incorrect ID Code.] The ID code is incorrect. Input a correct ID code. If the FLMD0 pin is High, confirm that the pin is connected according to the user's manual of the Emulator. Check the N-Wire connection enable flag (bit 7 at address 79). If this flag cannot be connected or the ID code has been forgotten, erase the flash memory using the flash programmer.

No.	Error No.	Error Messages and Corrective Action
25	0xf604	[Incorrect ID Code. Abort the V850 JTAG OCD Checker.] The ID code is incorrect. Re-start the V850 JTAG OCD Checker and input a correct ID code. If the FLMD0 pin is High, confirm that the pin is connected according to the user's manual of the Emulator. Check the N-Wire connection enable flag (bit 7 at address 79). If this flag cannot be connected or the ID code has been forgotten, erase the flash memory using the flash programmer.
26	0xf605	[The ID code input setup is required.] Check the ID code check box and input the ID code.
27	0xf606	[IECUBE is connected.] Remove IECUBE.

5.1.2 When V850E2M/V850E2S is chosen

Note *1: Selection is required only when [E1 Emulator] in the **Emulator** area is chosen.

No.	Error No.	Error Messages and Corrective Action
1	0x0100	[Driver couldn't be opened.] The PC and Emulator may be not connected. The PC may be not recognized after it has entered suspend mode, so restart the PC. The device driver may be not installed. Install the driver.
2	0x0105	[Failed in reading device file (dxxxx.800).] The necessary file may be damaged. Reinstall the device file.
3	0x0109	[USB access failed.] Exit this utility and re-connect up Emulator.
4	0x010a 0x01a6	[EXEC already work.] Exit the debugger.
5	0x01a0	[Processing of a monitor was not completed to within a time.] Confirm that the resonator oscillates normally. Confirm that the correct value is set to MainOSC. The problem may also be caused by an internal chip problem. Check the connection of the NEXUS I/F(TCK, TMS, TDI, TDO, TRST, RDY).
6	0x03a0	[The Power supply of target is OFF.] Check the target power supply. Check the cable connecting the Emulator and target board. Check that the VDD signal is input to the connector of the target board.
7	0x0400	[Incorrect value of MainOSC.] MainOSC can't be set to 0.
8	0x0b04	[Although the power supply of target is ON, Vdd Out is set Enable.] (*1) Set Vdd Out as Disable, or shut off the power supply of the target.
9	0x0c01	[During access of register, CPU did timeout.] Confirm that the resonator oscillates normally. Confirm that the correct value is set to MainOSC. The problem may also be caused by an internal chip problem. Check the connection of the NEXUS I/F(TCK, TMS, TDI, TDO, TRST, RDY).
10	0x0c02	[During access of memory, CPU did timeout.] Confirm that the resonator oscillates normally. Confirm that the correct value is set to MainOSC. The problem may also be caused by an internal chip problem. Check the connection of the NEXUS I/F(TCK, TMS, TDI, TDO, TRST, RDY).
11	0x0c24	[It couldn't shift to debug mode.] Confirm that the resonator oscillates normally. Confirm that the correct value is set to MainOSC. Check the clock signal. This may be caused by a stopped clock or a slow clock. Check the connection of the NEXUS I/F(TCK, TMS, TDI, TDO, TRST, RDY).
12	0x0c2e	[During access of flash memory information, CPU did timeout.] Confirm that the correct device is selected. The problem may also be caused by an internal chip problem.
13	0x0c2f	[During access of flash memory information, the response from CPU was not right.] Confirm that the correct device is selected. The problem may also be caused by an internal chip problem.
14	0x0c43	[Connection of Emulator couldn't be performed.] Confirm that the resonator oscillates normally. Check the OPJTAG bit of OPBT0. If OPJTAG bit is set to 1 (JTAG I/F is enable), Emulator can connect to the device. Confirm the RESET circuit on the target board. It might have been unable to shift to a debug mode, because the device was during RESET. Set the OPBT0 to stop the Watchdog timer using the flash programmer. It might have been unable to shift to a debug mode, because often generating RESET by the Watchdog timer. The Emulator may also have malfunctioned.
15	0x0c70 0x0c77	[It has not accessed to DCU.] Check the power to the device and the interface voltage. Check the connection of the NEXUS I/F(TCK, TMS, TDI, TDO, TRST, RDY).

No.	Error No.	Error Messages and Corrective Action
16	0x0c71	[Reset couldn't be performed.] Confirm that the resonator oscillates normally. Confirm that the correct value is set to MainOSC. Check the clock signal. This may be caused by a stopped clock or a slow clock. Check the connection of the NEXUS I/F(TCK, TMS, TDI, TDO, TRST, RDY).
17	0x0c72	[Monitor memory couldn't be accessed.] Confirm that the resonator oscillates normally. Confirm that the correct value is set to MainOSC. The problem may also be caused by an internal chip problem. Check the connection of the NEXUS I/F(TCK, TMS, TDI, TDO, TRST, RDY).
18	0x0c73	[Monitor execution couldn't be performed.] Confirm that the resonator oscillates normally. Confirm that the correct value is set to MainOSC. The problem may also be caused by an internal chip problem. Check the connection of the NEXUS I/F(TCK, TMS, TDI, TDO, TRST, RDY).
19	0x0c74	[CPU register cannot be accessed.] Confirm that the correct device is selected. Confirm that the resonator oscillates normally. Confirm that the correct value is set to MainOSC. The problem may also be caused by an internal chip problem. Check the connection of the NEXUS I/F(TCK, TMS, TDI, TDO, TRST, RDY).
20	0x0ca3	[Incorrect selection of a device file] Confirm that the correct device is selected.
21	0xf603	[Incorrect ID Code.] The ID code is incorrect. Input a correct ID code. If the FLMD0 pin is High, confirm that the pin is connected according to the user's manual of the Emulator. Check the On-chip Debug enable flag (bit 7 at address 79). If this flag is set to disable or the ID code has been forgotten, erase the flash memory using the flash programmer.
22	0xf604	[Incorrect ID Code. Abort the V850 JTAG OCD Checker.] The ID code is incorrect. Re-start the V850 JTAG OCD Checker and input a correct ID code. If the FLMD0 pin is High, confirm that the pin is connected according to the user's manual of the Emulator. Check the On-chip Debug enable flag (bit 7 at address 79). If this flag is set to disable or the ID code has been forgotten, erase the flash memory using the flash programmer.
23	0xf605	[The ID code input setup is required.] Check the ID code check box and input the ID code.
24	0xf606	[IECUBE is connected.] Remove IECUBE.

If data access by [DCU Reg] test results in NG

Normal access to the DCU register is impossible.

Perform a DCK waveform test.

If no anomaly is found with the DCK waveform test, the register may be damaged, so try again with a different chip.

If data access by [CPU Reg] test results in NG

Normal access to the CPU register is impossible.

Perform a DCK waveform test.

If no anomaly is found with the DCK waveform test, the register may be damaged, so try again with a different chip.

5.2 DCK waveform test

Check the following items regarding the design of the target board, in accordance with the user's Manual.

CHAPTER 4 NOTES ON TARGET SYSTEM DESIGN in the IE-V850E1-CD-NW User's Manual or **3.4 Designing Target System Circuits** in the QB-V850MINI(L) User's Manual.

IE-V850E1-CD-NW/QB-V850MINI

- Is the pattern of the N-Wire interface signal 100 mm or less?
- Is the DCK signal shielded by a pull-up resistor^{Note} + GND?
- Is a pull-up resistor^{Note} connected to the DMS, DDI, and DDO signals?
- Is a pull-down resistor^{Note} connected to the _DRSTZ signal (or DRST^{bar} signal)?

Note The resistance of the resistor must be as specified for each device. Some devices have on-chip pull-up/down resistors. With these devices, an external resistor is not necessary.

Also check the following items regarding the power supply capacity of the target board.

- Is a power supply with a sufficient capacity used?
- Are sufficient capacitors provided on the target board?
- Is a bypass capacitor connected to all the power supply pins of the CPU?
- Is the GND plane on the target board sufficiently large?

6. Changes from N-Wire Checker V1.30/V2.10

The following point has been changed from N-Wire Checker V1.30 and V2.10 to V850 JTAG OCD Checker V1.00.

- The V850E2M core and V850E2S core are now supported.
- The E1 Emulator and E20 Emulator are now supported.

7. Restrictions

- Up to 21,000 characters can be displayed in the log viewer area.
- If the number of characters exceeds the displayable limit, the oldest data will be overwritten. In this case, refer to the log file as all the data is recorded there.
- In cases when there is a severe shortage of system resources, output to the log viewer area will stop. In this case, even though screen output has stopped, data will continue to be recorded in the log file and can be referenced from there. (The log file is overwritten when the V850 JTAG OCD Checker is started up.)

Revision History	V850 JTAG OCD Checker User's Manual
------------------	-------------------------------------

Rev.	Date	Description	
		Page	Summary
1.00	Feb 20, 2013	—	First Edition issued
2.00	Apr 04, 2016	5	1.3 Operating Environment, Deleted.

V850 JTAG OCD Checker User's Manual

Publication Date: Feb 20, 2013 Rev.1.00
Apr 04, 2016 Rev.2.00

Published by: Renesas Electronics Corporation



SALES OFFICES

Renesas Electronics Corporation

<http://www.renesas.com>

Refer to "<http://www.renesas.com/>" for the latest and detailed information.

Renesas Electronics America Inc.

2801 Scott Boulevard Santa Clara, CA 95050-2549, U.S.A.
Tel: +1-408-588-6000, Fax: +1-408-588-6130

Renesas Electronics Canada Limited

9251 Yonge Street, Suite 8309 Richmond Hill, Ontario Canada L4C 9T3
Tel: +1-905-237-2004

Renesas Electronics Europe Limited

Dukes Meadow, Millboard Road, Bourne End, Buckinghamshire, SL8 5FH, U.K.
Tel: +44-1628-585-100, Fax: +44-1628-585-900

Renesas Electronics Europe GmbH

Arcadiastrasse 10, 40472 Düsseldorf, Germany
Tel: +49-211-6503-0, Fax: +49-211-6503-1327

Renesas Electronics (China) Co., Ltd.

Room 1709, Quantum Plaza, No.27 ZhiChunLu Haidian District, Beijing 100191, P.R.China
Tel: +86-10-8235-1155, Fax: +86-10-8235-7679

Renesas Electronics (Shanghai) Co., Ltd.

Unit 301, Tower A, Central Towers, 555 Langao Road, Putuo District, Shanghai, P. R. China 200333
Tel: +86-21-2226-0888, Fax: +86-21-2226-0999

Renesas Electronics Hong Kong Limited

Unit 1601-1611, 16/F., Tower 2, Grand Century Place, 193 Prince Edward Road West, Mongkok, Kowloon, Hong Kong
Tel: +852-2265-6688, Fax: +852 2886-9022

Renesas Electronics Taiwan Co., Ltd.

13F, No. 363, Fu Shing North Road, Taipei 10543, Taiwan
Tel: +886-2-8175-9600, Fax: +886 2-8175-9670

Renesas Electronics Singapore Pte. Ltd.

80 Bendemeer Road, Unit #06-02 Hyflux Innovation Centre, Singapore 339949
Tel: +65-6213-0200, Fax: +65-6213-0300

Renesas Electronics Malaysia Sdn.Bhd.

Unit 1207, Block B, Menara Amcorp, Amcorp Trade Centre, No. 18, Jln Persiaran Barat, 46050 Petaling Jaya, Selangor Darul Ehsan, Malaysia
Tel: +60-3-7955-9390, Fax: +60-3-7955-9510

Renesas Electronics India Pvt. Ltd.

No.77C, 100 Feet Road, HALII Stage, Indiranagar, Bangalore, India
Tel: +91-80-67208700, Fax: +91-80-67208777

Renesas Electronics Korea Co., Ltd.

12F., 234 Teheran-ro, Gangnam-Gu, Seoul, 135-080, Korea
Tel: +82-2-558-3737, Fax: +82-2-558-5141

V850 JTAG OCD Checker User's Manual



Renesas Electronics Corporation

R20UT2462EJ0200