

Renesas Flash Programmer

R20AN0547EJ0200

Rev.2.00

Dec.24.20

Usage from the Command Line

Introduction

This document introduces the command line control by using the Renesas Flash Programmer. Using command lines enables the automated control of programming.

Target Devices

RA family

RL78 family

RX family

RH850 family

Renesas Synergy™ microcontrollers

RE family

Power management (power-management IC)

Renesas USB Power Delivery family (C30 group)

ICs for driving motors and actuators (ICs for motor control)

Contents

1. Overview	3
2. Procedure before Using Project Files from the Simple Command Line	3
2.1 Connecting a System	3
2.2 Connecting a Target System	4
2.3 Creating a Project File	4
2.4 Setting a Project	7
2.5 Creating a Batch File	10
2.6 Executing the Batch File	10
3. Examples of Processing from the Simple Command Line with the Use of Project Files	11
3.1 Programming Multiple Program Files	11
3.2 Consecutive Programming of Different Specified Projects	11
3.3 Executing the Specified Commands (Erasure, Programming, and Verification)	11
3.4 Programming Sections of the Option Bytes (OPBTs) of MCUs with RH850G4MH Cores	11
3.5 Programming with a Specified Emulator	11
3.6 Simultaneous Programming through Multiple Devices Connected to a PC (Gang Programming)	12
3.7 Output of Descriptions of the Executed Command Lines to the Windows Command Prompt	13
4. Examples of Processing from Command Lines with the Use of rfp-cli	14
4.1 Programming a Program File	14

4.2	Programming Multiple Program Files.....	14
4.3	Executing the Specified Commands (Erasure, Programming, Verification, and Checksum).....	14
4.4	Programming Options in Flash Memory.....	14
4.5	Reading Options for Flash Memory	14
4.6	Reading or Programming Sections of the Option Bytes (OPBTs) of MCUs with RH850G4MH Cores	15
4.7	Programming with a Specified Emulator	15
4.8	Setting Reset Signals with a Serial Connection through a COM Port	15
4.9	Simultaneous Programming through Multiple Devices Connected to a PC (Gang Programming)	15

1. Overview

The Renesas Flash Programmer (RFP) enables the automated control of programming by using command lines.

There are two types of command line control of the RFP.

- Use of project files from a simple command line (for Windows)
- Use of rfp-cli from a command line (for Windows and Linux)

For rfp-cli, programming can be controlled from the command line alone without the use of project files. This facility is supported by V3.08.00 and later versions of the RFP.

This document introduces various examples of processing by using command lines so try using them and adapting them to your own needs.

For details on the RFP, refer to the user's manual.

<https://www.renesas.com/rfp>

2. Procedure before Using Project Files from the Simple Command Line

This chapter helps you to understand the sequence of the basic procedures to follow before setting up processing that uses project files of the RFP from the simple command line, taking the RL78/G14 as an example of the target MCU.

- The descriptions in this chapter apply under the following conditions.
Target MCU: R5F104LE (RL78/G14)
Tool: E2 emulator Lite
Connection: 1-wire UART (single-wire UART)
Bit rate: 1,000,000 bps
Clock to be supplied: None (on-chip clock oscillator)
Power supply: E2 emulator Lite (3.3 V)
Operations of flash memory: Erasure, programming, and verification
Options for flash memory: None
- This chapter describes the following procedures. If you already understand the items up to step 4, Setting a project, start with reference to step 5, Creating a batch file.
 1. Connecting a system
 2. Connecting a target system
 3. Creating a project file
 4. Setting a project
 5. Creating a batch file
 6. Executing the batch file

2.1 Connecting a System

Connect the USB port of the host PC to the tool to be used via a USB cable.

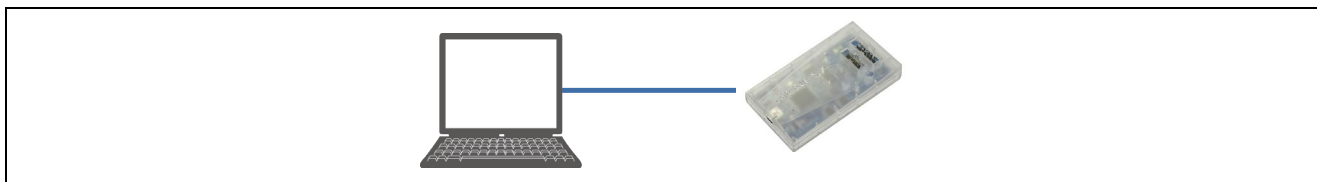


Figure 2.1 Connecting a Tool

2.2 Connecting a Target System

Connect the target cable of the tool to the target system.



Figure 2.2 Connecting a Target System

2.3 Creating a Project File

Start the RFP GUI to open the main window.

Select [New Project] from the [File] menu to open the [Create New Project] dialog box.

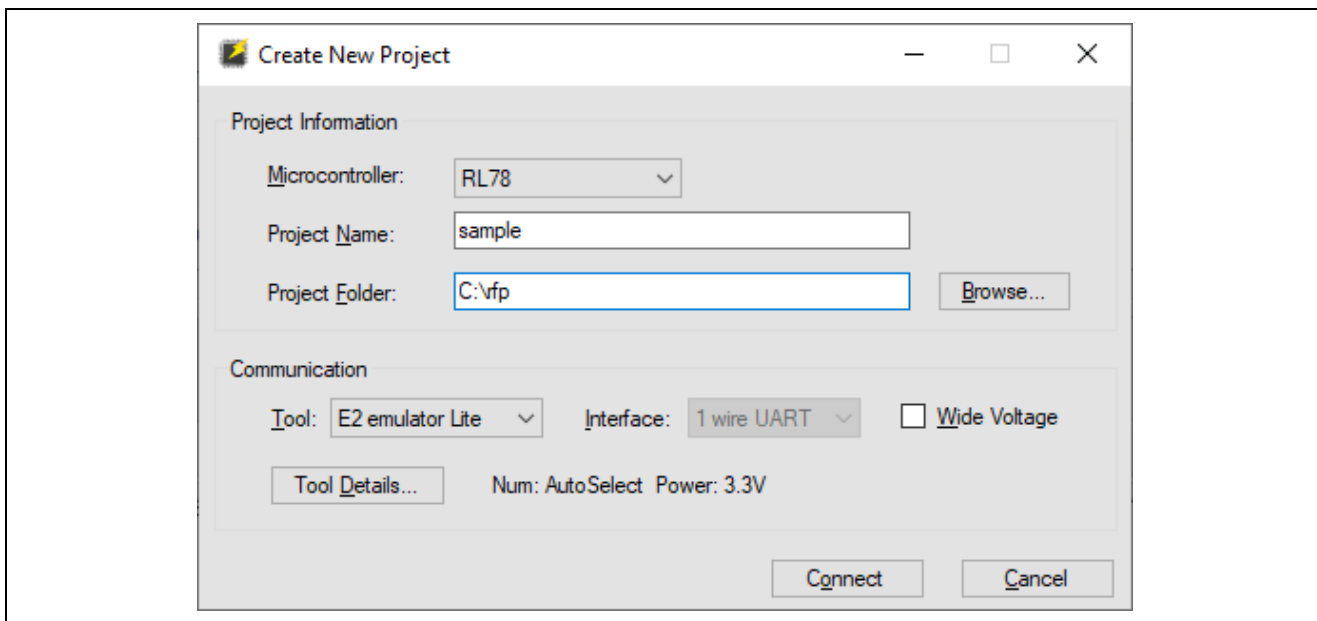


Figure 2.3 [Create New Project] Dialog Box

Select "RL78" for [Microcontroller], enter "sample" for [Project Name], specify "C:\rfp" for [Project Folder], and select "E2 emulator Lite" for [Tool].

Clicking on the [Tool Details] button opens the [Tool Details] dialog box.

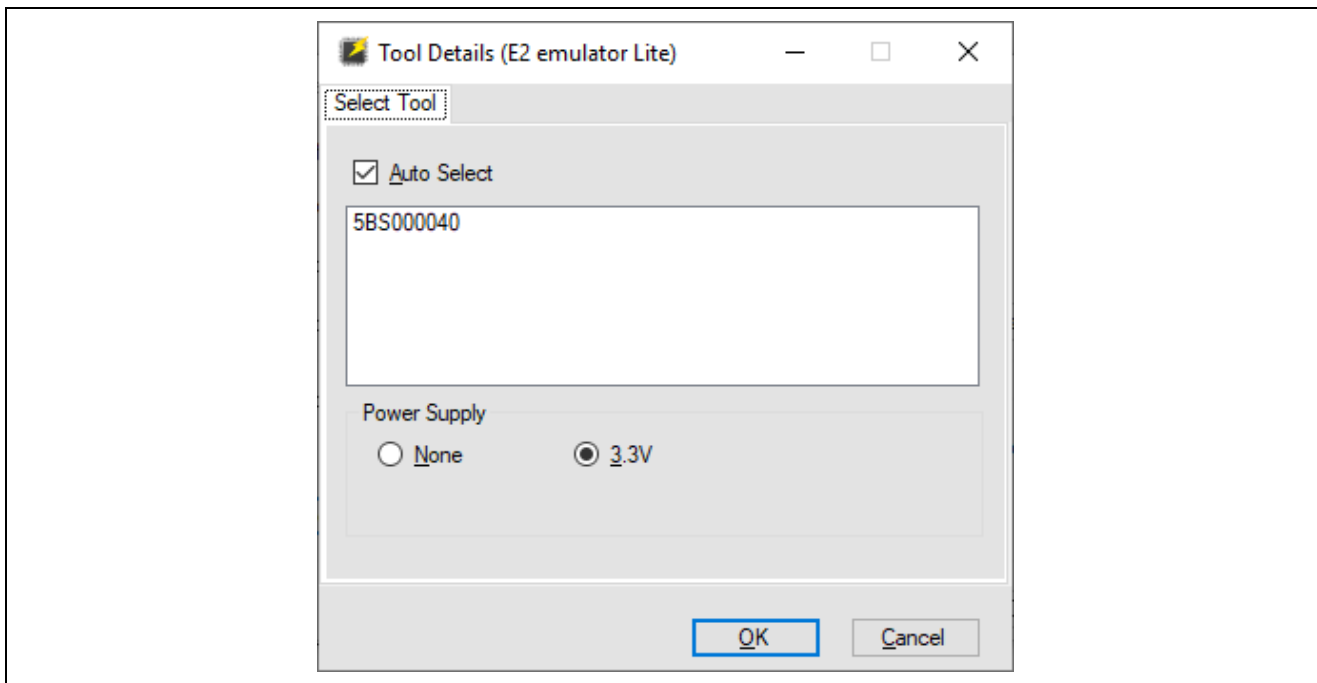


Figure 2.4 [Tool Details] Dialog Box

Select "3.3V" and click on the [OK] button.

After returning to the [Create New Project] dialog box, click on the [Connect] button.

The project file is created and the display returns to the main window.

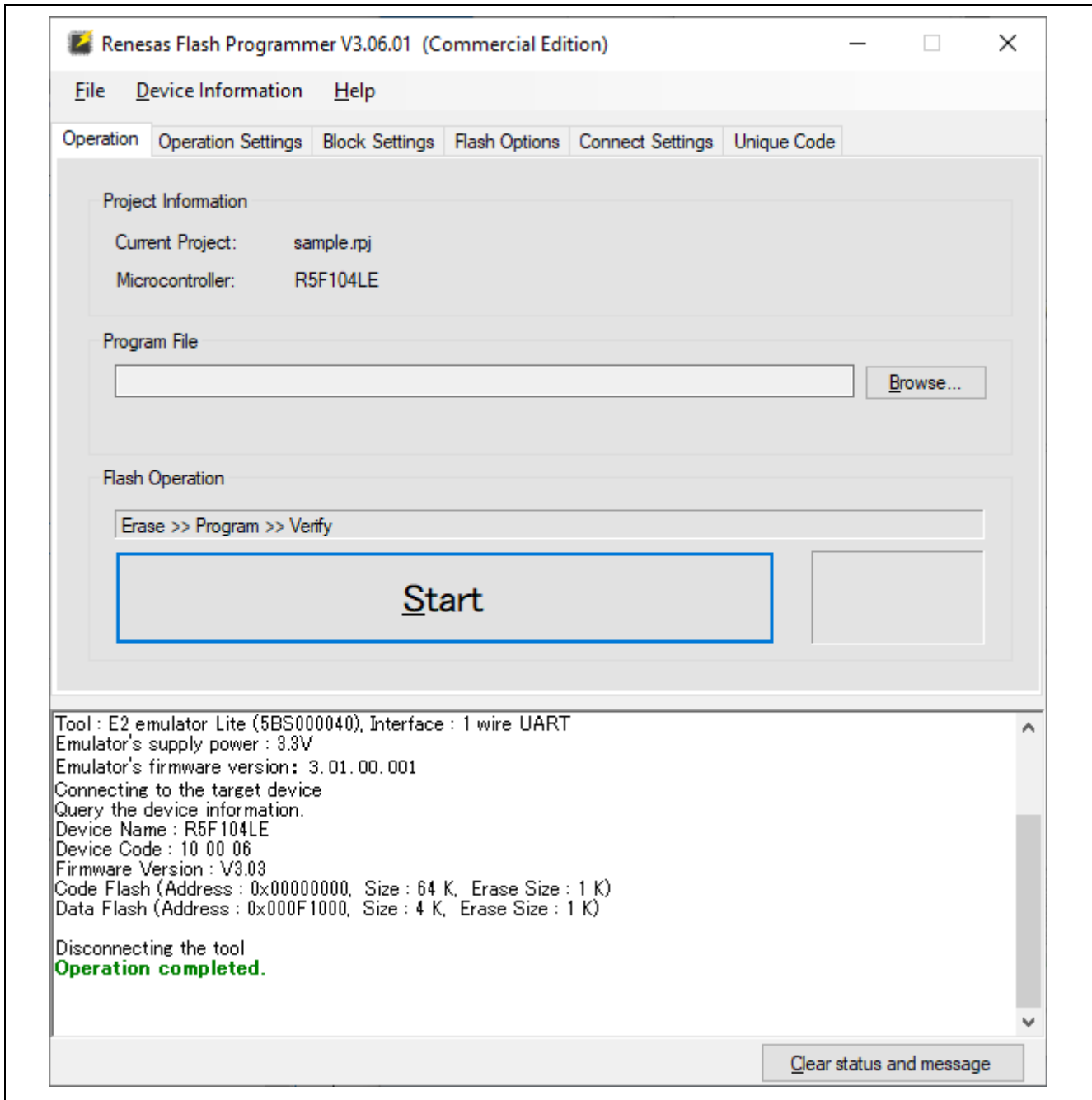


Figure 2.5 Main Window

2.4 Setting a Project

Specify "C:\vfp\sample.mot" for [Program File] on the [Operation] tabbed page.

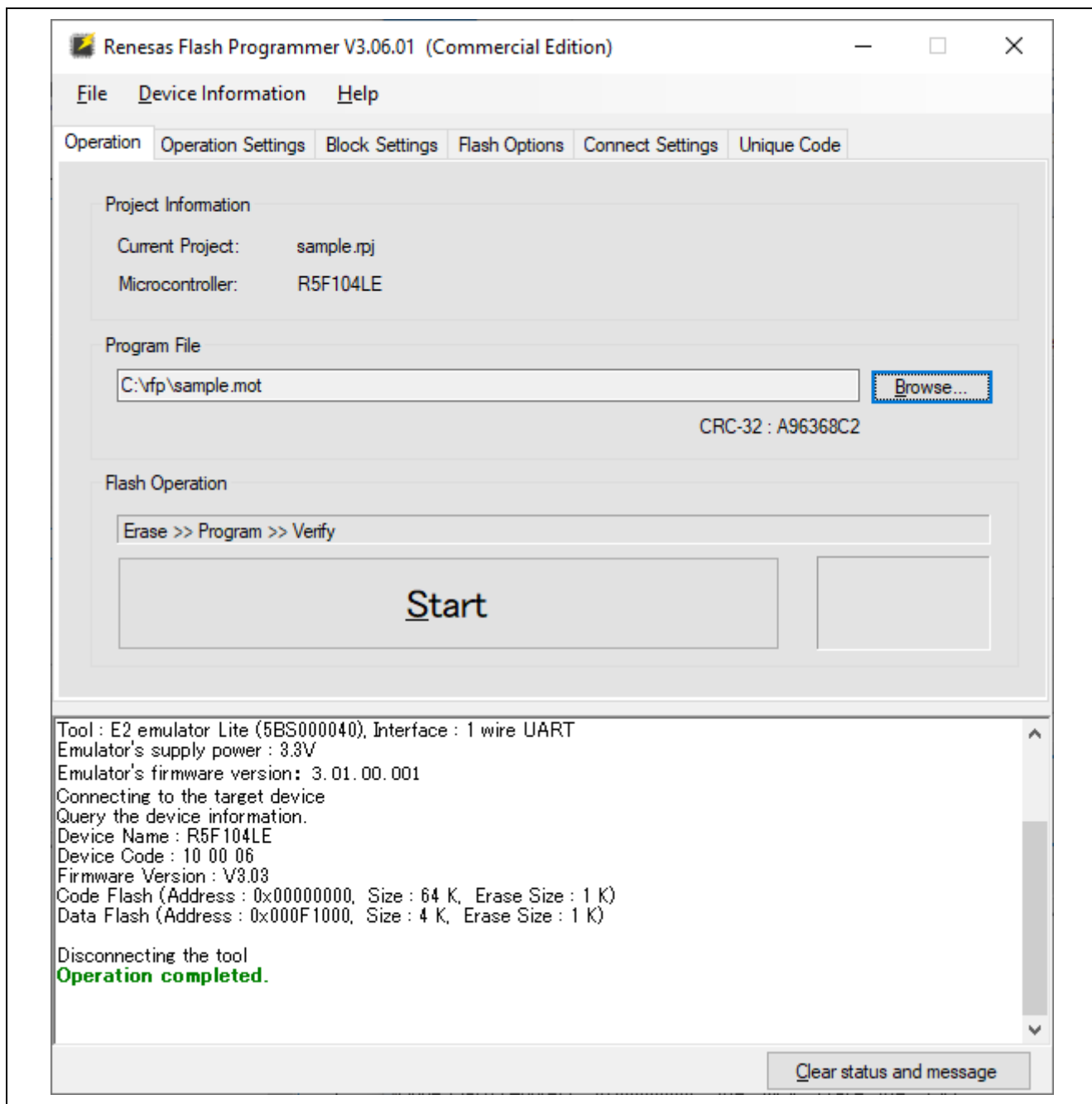


Figure 2.6 [Operation] Tabbed Page

On the [Operation Settings] tabbed page, select the [Erase], [Program], and [Verify] checkboxes in the [Command] category and confirm this.

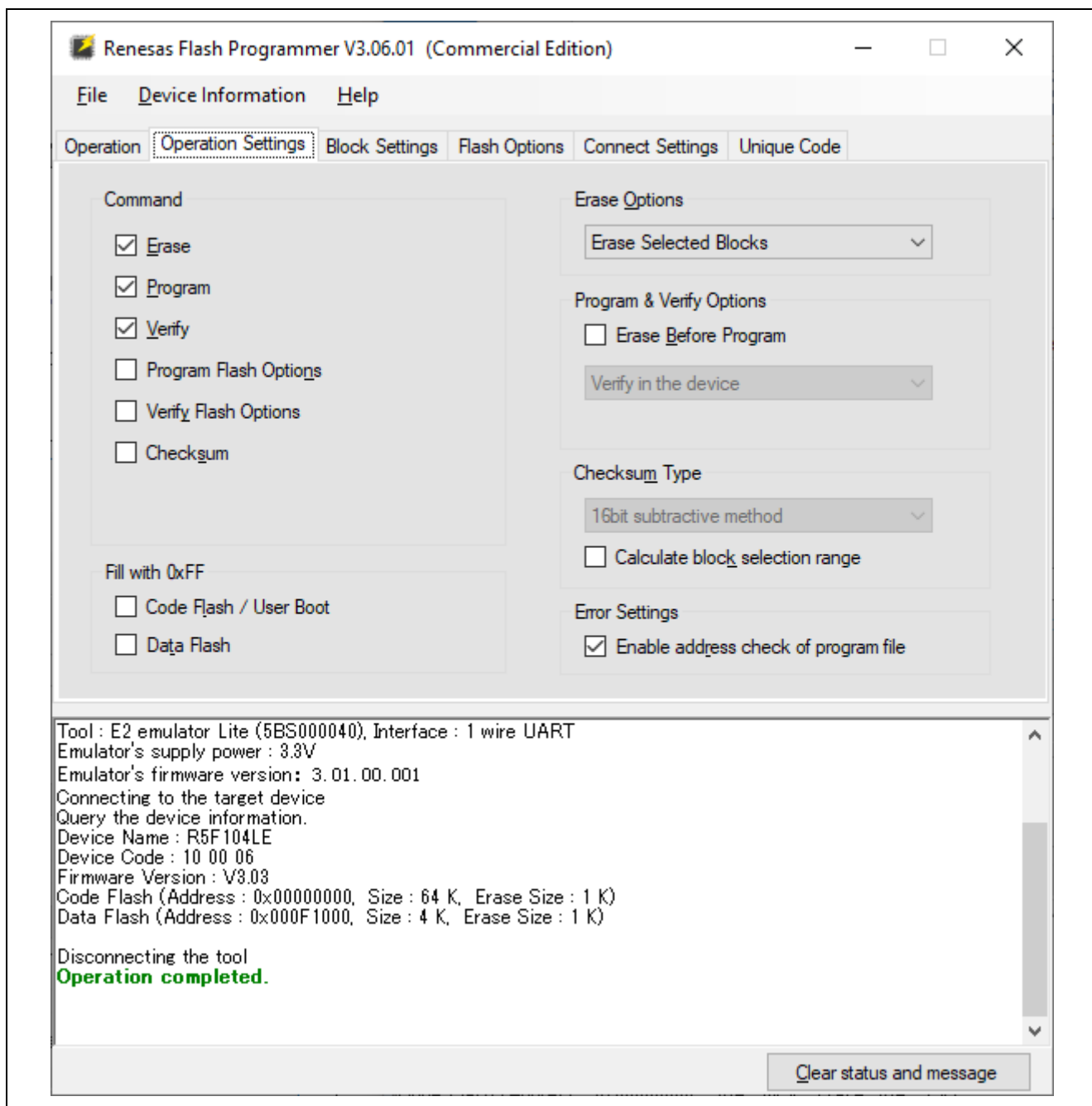


Figure 2.7 [Operation Settings] Tabbed Page

Specify "1,000,000 bps" for [Speed] on the [Connect Settings] tabbed page.

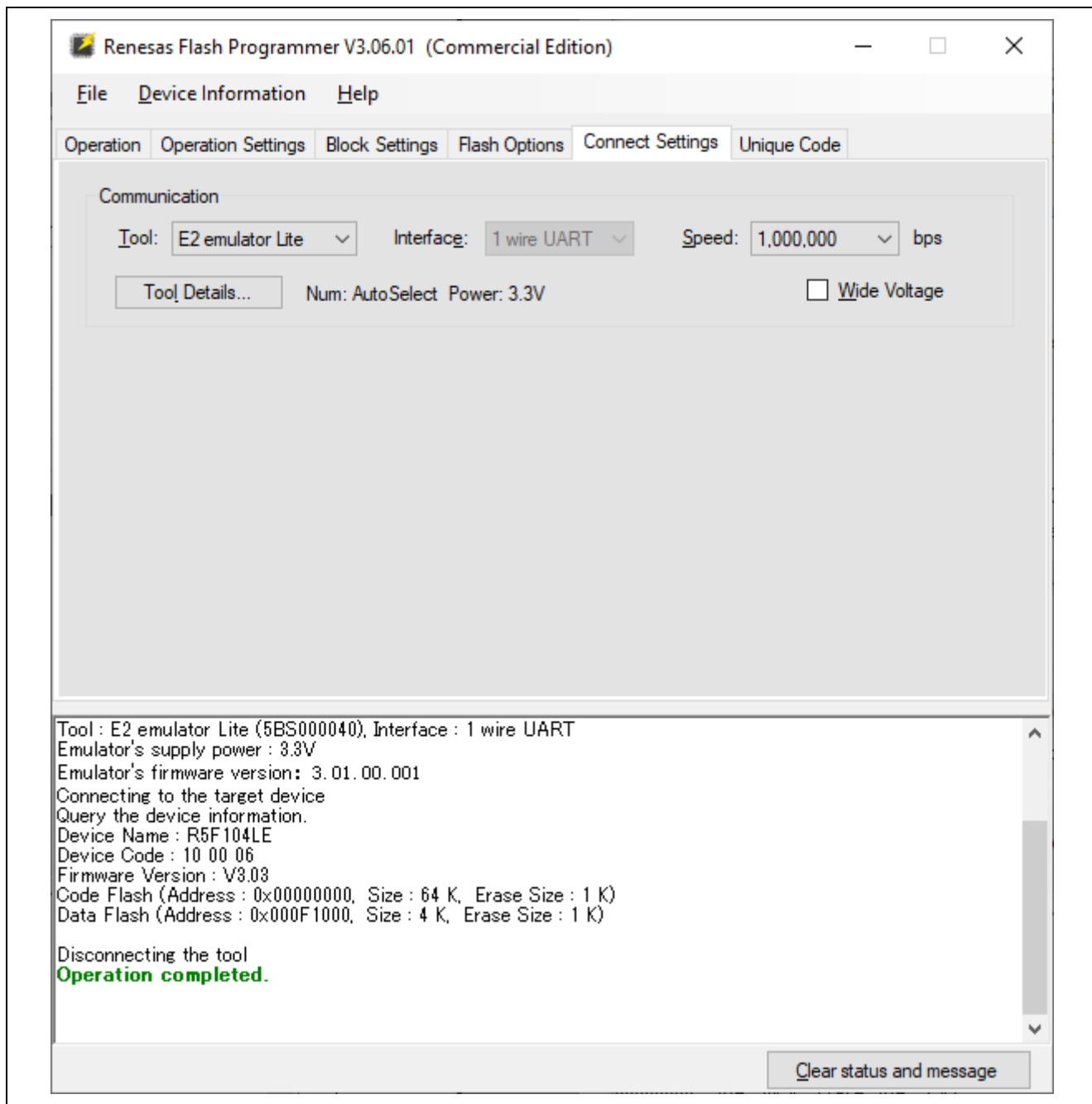


Figure 2.8 [Connect Settings] Tabbed Page

Select [Save Project] from the [File] menu to save the project.

Select [Exit] from the [File] menu to close the RFP window.

2.5 Creating a Batch File

Enter the following in a text editor and save it as "C:\rfp\sample.bat".

```
SET PATH=%PATH%;C:\Program Files (x86)\Renesas Electronics\Programming Tools\Renesas Flash  
Programmer V3.06  
RFPV3.exe /silent "C:\rfp\sample\sample.rpj"  
ECHO Result Code: %ErrorLevel%  
PAUSE
```

Figure 2.9 Creating a Batch File

Using the silent option starts the RFP in a silent mode in which the GUI is not displayed.

After the specified project file (sample.rpj) is opened and processing which is equivalent to execution (in this case, erasure, programming, and verification) in response to pressing the [Start] button once is done, the RFP is closed.

If the processing succeeded, result code 0 is returned. Otherwise, 1 is returned.

Specify the folder in which the RFP has been installed as the folder indicated by "SET PATH".

"PAUSE" is added so that the output against the command prompts can be confirmed after the RFP has been closed.

2.6 Executing the Batch File

Execute the sample.bat batch file.

The following lines are displayed in the command prompt window.

```
C:\rfp>SET PATH=%PATH%;C:\Program Files (x86)\Renesas Electronics\Programming Tools\Renesas  
Flash Programmer V3.06  
  
C:\rfp>RFPV3.exe /silent "C:\rfp\sample\sample.rpj"  
  
C:\rfp>ECHO Result Code: 0  
Result Code: 0  
  
C:\rfp>PAUSE  
Press any key to continue...
```

Figure 2.10 Executing the Batch File

3. Examples of Processing from the Simple Command Line with the Use of Project Files

This chapter describes examples of processing from the simple command line with the use of project files. For details on the simple command line, refer to the user's manual.

<https://www.renesas.com/rfp>

3.1 Programming Multiple Program Files

Using the file option allows the specification of a program file without using one specified by a project. Multiple program files are also specifiable.

The command in the following example is for the programming of "sample1.mot" and "sample2.mot".

```
RFPV3.exe /silent "C:\rfp\sample\sample.rpj" /file "C:\rfp\sample1.mot" /file "C:\rfp\sample2.mot"
```

3.2 Consecutive Programming of Different Specified Projects

When programming is executed several times from the command line, different projects can be specified and consecutive programming is possible.

The following shows an example of commands for the consecutive programming of "sample1.rpj" and "sample2.rpj".

```
RFPV3.exe /silent "C:\rfp\sample\sample1.rpj"
```

```
RFPV3.exe /silent "C:\rfp\sample\sample2.rpj"
```

3.3 Executing the Specified Commands (Erasure, Programming, and Verification)

The command option can be used to specify a command without using the specification of a command (erasure, programming, or verification) in a project. Multiple commands are also specifiable.

The following shows an example of the specification of three commands (e: erasure, p: programming, and v: verification).

```
RFPV3.exe /silent "C:\rfp\sample\sample.rpj" /command epv
```

3.4 Programming Sections of the Option Bytes (OPBTs) of MCUs with RH850G4MH Cores

The write32 option can be used to program specified values to specified addresses without using the program file specified in the project.

The following shows an example of programming of the value 0x01020304 to OPBT0 (address 0xFF320080) and the value 0x0A0B0C0D to OPBT1 (address 0xFF320084) of an RH850/E2M.

```
RFPV3.exe /silent "C:\rfp\sample\sample.rpj" /write32 FF320080 01020304 0A0B0C0D
```

Since this option also involves reading, it cannot be used with devices that do not support reading or those from which reading is not possible due to security settings.

3.5 Programming with a Specified Emulator

Using the tool option can specify the serial number of an emulator.

The following shows an example of programming through an emulator with the serial number represented by "xxxxxxx" of the emulator.

```
RFPV3.exe /silent "C:\rfp\sample\sample.rpj" /tool xxxxxxxx
```

3.6 Simultaneous Programming through Multiple Devices Connected to a PC (Gang Programming)

Multiple RFPs can be started on a PC. It can also be used for programming multiple devices by specifying the serial numbers of different emulators. The start command of the Windows command prompt can also be used to set up a batch file that launches multiple batch files which continue running at the same time.

The following shows an example where two RFPs are started at the same time to program the devices connected to two emulators in the sample.rpj project.

This example is the sample1.bat batch file to handle programming through the first emulator (serial number: xxxxxxxxx).

```
RFPV3.exe /silent "C:\rfp\sample\sample.rpj" /tool xxxxxxxxx
echo off
if errorlevel 1 goto NG
:OK
echo OK Result Code: %ErrorLevel%
goto END
:NG
echo NG Result Code: %ErrorLevel%
:END
PAUSE
exit
```

This example is the sample2.bat batch file to handle programming through the second emulator (serial number: yyyyyyyyy).

```
RFPV3.exe /silent "C:\rfp\sample\sample.rpj" /tool yyyyyyyyy
echo off
if errorlevel 1 goto NG
:OK
echo OK Result Code: %ErrorLevel%
goto END
:NG
echo NG Result Code: %ErrorLevel%
:END
PAUSE
exit
```

This example is the sample.bat batch file, which executes calls of both "sample1.bat" and "sample2.bat".

```
:LOOP
start sample1.bat
start sample2.bat
PAUSE
goto LOOP
```

3.7 Output of Descriptions of the Executed Command Lines to the Windows Command Prompt

The file RFPV3.Console.exe in the folder where the RFP is installed produces descriptions of the executed command lines in the command prompt window.

The following shows an example of the execution of RFPV3.Console.exe for programming from the sample.rpj project.

```
RFPV3.Console.exe "C:\rfp\sample\sample.rpj"
```

The following is output to the command prompt.

```
C:\rfp>RFPV3.Console.exe "C:\rfp\sample\sample.rpj"
Renesas Flash Programmer V3.06.01 [1 Oct 2019] (Commercial Edition)
Load a project (C:\rfp\sample\sample.rpj).
Load a file (C:\rfp\sample.mot). CRC-32 : A96368C2

Connected device: R5F104LE

Connecting the RFP to the tool.
: (Omitted.)
Disconnecting the RFP from the tool.
The operation succeeded.
```

4. Examples of Processing from Command Lines with the Use of rfp-cli

This chapter describes examples of processing from command lines with the use of rfp-cli. When rfp-cli is used from a command line, programming can be controlled from the command line alone without the use of project files. For details on running rfp-cli from the command line you will be using, refer to the user's manual and rfp_cli.md in the DOC folder in the installation folder. Running rfp-cli -h shows the usage of rfp-cli.

<https://www.renesas.com/rfp>

Caution Change the examples to suit the target system you are using.

4.1 Programming a Program File

Specifying the options related to the MCUs or tools allows the programming of a program file. The command in the following example is for the programming of "sample.mot" with the following conditions.

Target MCU: RL78 (-d option)

Tool: E2 emulator Lite (-t option)

Power supply: E2 emulator Lite (3.3 V) (-vo option)

Operations of flash memory: Erasure, programming, and verification (-a option)

```
rfp-cli -d rl78 -t e2l -vo 3.3 -a "C:\rfp\sample.mot"
```

4.2 Programming Multiple Program Files

Multiple program files are programmable.

The command in the following example is for the programming of "sample1.mot" and "sample2.mot".

```
rfp-cli -d rl78 -t e2l -vo 3.3 -a "C:\rfp\sample1.mot" "C:\rfp\sample2.mot"
```

4.3 Executing the Specified Commands (Erasure, Programming, Verification, and Checksum)

A single command (erasure, programming, or verification) or multiple commands are specifiable.

The following shows an example of the specification of four commands (e: erasure, p: programming, v: verification, and c: checksum).

```
rfp-cli -d rl78 -t e2l -vo 3.3 -e -p -v -c "C:\rfp\sample.mot"
```

4.4 Programming Options in Flash Memory

Specifying the -fo option allows the programming of options for flash memory. The command in the following example is for the programming of "sample.mot" and the option for flash memory "programming prohibited".

```
rfp-cli -d rl78 -t e2l -vo 3.3 -a -fo flags p "C:\rfp\sample.mot"
```

4.5 Reading Options for Flash Memory

Specifying the -rfo option allows the reading and display of options for flash memory.

```
rfp-cli -d rl78 -t e2l -vo 3.3 -rfo
```

4.6 Reading or Programming Sections of the Option Bytes (OPBTs) of MCUs with RH850G4MH Cores

In devices with the RH850G4MH core, option bytes are allocated to memory. Using memory read commands allows the simple confirmation of option bytes. In addition, using commands for programming sections allows the programming of sections of option bytes.

The following shows an example of the reading and display of OPBT0 (address 0xFF320080) and OPBT1 (address 0xFF320084) of an RH850/E2M.

```
rfp-cli -d rh850/e2x -t e2 -rv FF320080 8 -view-size 4
```

The following shows an example of programming of the value 0x01020304 to OPBT0 (address 0xFF320080) and the value 0x0A0B0C0D to OPBT1 (address 0xFF320084) of an RH850/E2M.

```
rfp-cli -d rh850/e2x -t e2 -write32 FF320080 01020304,0A0B0C0D
```

Since these options also involve reading, they cannot be used with devices that do not support reading or those from which reading is not possible due to security settings.

4.7 Programming with a Specified Emulator

Using the tool option can specify the serial number of an emulator.

The following shows an example of programming through an emulator with the serial number represented by "xxxxxxxx" of the emulator.

```
rfp-cli -d rl78 -t e2l:xxxxxxxx -vo 3.3 -a "C:\rfp\sample.mot"
```

4.8 Setting Reset Signals with a Serial Connection through a COM Port

For a serial connection through a COM port, the RTS and DTR pins can be used for controlling reset signals and the option settings are made to select the logical sense of the signals.

The following shows an example of output of the high level from the DTR pin when the pin is used as a reset signal for COMx (where x means the COM port number) to reset the device.

```
rfp-cli -d rl78 -port COMx -dtr-inv -a "C:\rfp\sample.mot"
```

4.9 Simultaneous Programming through Multiple Devices Connected to a PC (Gang Programming)

Multiple RFPs can be started on a PC. It can also be used for programming multiple devices by specifying the serial numbers of different emulators. The start command of the Windows command prompt can also be used to set up a batch file that launches multiple batch files which continue running at the same time.

The following shows an example where two RFPs are started at the same time to program the devices connected to two emulators.

This example is the sample1.bat batch file to handle programming through the first emulator (serial number: xxxxxxxx).

```
rfp-cli -d rl78 -t e2l:xxxxxxxx -vo 3.3 -a "C:\rfp\sample.mot"
echo off
if errorlevel 1 goto NG
:OK
echo OK Result Code: %ErrorLevel%
goto END
:NG
```

```
echo NG Result Code: %ErrorLevel%  
:END  
PAUSE  
Exit
```

This example is the sample2.bat batch file to handle programming through the second emulator (serial number: yyyyyyyyy).

```
rfp-cli -d rl78 -t e2l:yyyyyyyyy -vo 3.3 -a "C:\rfp\sample.mot"  
echo off  
if errorlevel 1 goto NG  
:OK  
echo OK Result Code: %ErrorLevel%  
goto END  
:NG  
echo NG Result Code: %ErrorLevel%  
:END  
PAUSE  
Exit
```

This example is the sample.bat batch file, which executes calls of both "sample1.bat" and "sample2.bat".

```
:LOOP  
start sample1.bat  
start sample2.bat  
PAUSE  
goto LOOP
```


General Precautions in the Handling of Microprocessing Unit and Microcontroller Unit Products

The following usage notes are applicable to all Microprocessing unit and Microcontroller unit products from Renesas. For detailed usage notes on the products covered by this document, refer to the relevant sections of the document as well as any technical updates that have been issued for the products.

1. Precaution against Electrostatic Discharge (ESD)

A strong electrical field, when exposed to a CMOS device, can cause destruction of the gate oxide and ultimately degrade the device operation. Steps must be taken to stop the generation of static electricity as much as possible, and quickly dissipate it when it occurs. Environmental control must be adequate. When it is dry, a humidifier should be used. This is recommended to avoid using insulators that can easily build up static electricity.

Semiconductor devices must be stored and transported in an anti-static container, static shielding bag or conductive material. All test and measurement tools including work benches and floors must be grounded. The operator must also be grounded using a wrist strap. Semiconductor devices must not be touched with bare hands. Similar precautions must be taken for printed circuit boards with mounted semiconductor devices.

2. Processing at power-on

The state of the product is undefined at the time when power is supplied. The states of internal circuits in the LSI are indeterminate and the states of register settings and pins are undefined at the time when power is supplied. In a finished product where the reset signal is applied to the external reset pin, the states of pins are not guaranteed from the time when power is supplied until the reset process is completed. In a similar way, the states of pins in a product that is reset by an on-chip power-on reset function are not guaranteed from the time when power is supplied until the power reaches the level at which resetting is specified.

3. Input of signal during power-off state

Do not input signals or an I/O pull-up power supply while the device is powered off. The current injection that results from input of such a signal or I/O pull-up power supply may cause malfunction and the abnormal current that passes in the device at this time may cause degradation of internal elements. Follow the guideline for input signal during power-off state as described in your product documentation.

4. Handling of unused pins

Handle unused pins in accordance with the directions given under handling of unused pins in the manual. The input pins of CMOS products are generally in the high-impedance state. In operation with an unused pin in the open-circuit state, extra electromagnetic noise is induced in the vicinity of the LSI, an associated shoot-through current flows internally, and malfunctions occur due to the false recognition of the pin state as an input signal become possible.

5. Clock signals

After applying a reset, only release the reset line after the operating clock signal becomes stable. When switching the clock signal during program execution, wait until the target clock signal is stabilized. When the clock signal is generated with an external resonator or from an external oscillator during a reset, ensure that the reset line is only released after full stabilization of the clock signal. Additionally, when switching to a clock signal produced with an external resonator or by an external oscillator while program execution is in progress, wait until the target clock signal is stable.

6. Voltage application waveform at input pin

Waveform distortion due to input noise or a reflected wave may cause malfunction. If the input of the CMOS device stays in the area between V_{IL} (Max.) and V_{IH} (Min.) due to noise, for example, the device may malfunction. Take care to prevent chattering noise from entering the device when the input level is fixed, and also in the transition period when the input level passes through the area between V_{IL} (Max.) and V_{IH} (Min.).

7. Prohibition of access to reserved addresses

Access to reserved addresses is prohibited. The reserved addresses are provided for possible future expansion of functions. Do not access these addresses as the correct operation of the LSI is not guaranteed.

8. Differences between products

Before changing from one product to another, for example to a product with a different part number, confirm that the change will not lead to problems. The characteristics of a microprocessing unit or microcontroller unit products in the same group but having a different part number might differ in terms of internal memory capacity, layout pattern, and other factors, which can affect the ranges of electrical characteristics, such as characteristic values, operating margins, immunity to noise, and amount of radiated noise. When changing to a product with a different part number, implement a system-evaluation test for the given product.

Notice

1. Descriptions of circuits, software and other related information in this document are provided only to illustrate the operation of semiconductor products and application examples. You are fully responsible for the incorporation or any other use of the circuits, software, and information in the design of your product or system. Renesas Electronics disclaims any and all liability for any losses and damages incurred by you or third parties arising from the use of these circuits, software, or information.
 2. Renesas Electronics hereby expressly disclaims any warranties against and liability for infringement or any other claims involving patents, copyrights, or other intellectual property rights of third parties, by or arising from the use of Renesas Electronics products or technical information described in this document, including but not limited to, the product data, drawings, charts, programs, algorithms, and application examples.
 3. No license, express, implied or otherwise, is granted hereby under any patents, copyrights or other intellectual property rights of Renesas Electronics or others.
 4. You shall be responsible for determining what licenses are required from any third parties, and obtaining such licenses for the lawful import, export, manufacture, sales, utilization, distribution or other disposal of any products incorporating Renesas Electronics products, if required.
 5. You shall not alter, modify, copy, or reverse engineer any Renesas Electronics product, whether in whole or in part. Renesas Electronics disclaims any and all liability for any losses or damages incurred by you or third parties arising from such alteration, modification, copying or reverse engineering.
 6. Renesas Electronics products are classified according to the following two quality grades: "Standard" and "High Quality". The intended applications for each Renesas Electronics product depends on the product's quality grade, as indicated below.
 - "Standard": Computers; office equipment; communications equipment; test and measurement equipment; audio and visual equipment; home electronic appliances; machine tools; personal electronic equipment; industrial robots; etc.
 - "High Quality": Transportation equipment (automobiles, trains, ships, etc.); traffic control (traffic lights); large-scale communication equipment; key financial terminal systems; safety control equipment; etc.
- Unless expressly designated as a high reliability product or a product for harsh environments in a Renesas Electronics data sheet or other Renesas Electronics document, Renesas Electronics products are not intended or authorized for use in products or systems that may pose a direct threat to human life or bodily injury (artificial life support devices or systems; surgical implantations; etc.), or may cause serious property damage (space system; undersea repeaters; nuclear power control systems; aircraft control systems; key plant systems; military equipment; etc.). Renesas Electronics disclaims any and all liability for any damages or losses incurred by you or any third parties arising from the use of any Renesas Electronics product that is inconsistent with any Renesas Electronics data sheet, user's manual or other Renesas Electronics document.
7. No semiconductor product is absolutely secure. Notwithstanding any security measures or features that may be implemented in Renesas Electronics hardware or software products, Renesas Electronics shall have absolutely no liability arising out of any vulnerability or security breach, including but not limited to any unauthorized access to or use of a Renesas Electronics product or a system that uses a Renesas Electronics product. RENESAS ELECTRONICS DOES NOT WARRANT OR GUARANTEE THAT RENESAS ELECTRONICS PRODUCTS, OR ANY SYSTEMS CREATED USING RENESAS ELECTRONICS PRODUCTS WILL BE INVULNERABLE OR FREE FROM CORRUPTION, ATTACK, VIRUSES, INTERFERENCE, HACKING, DATA LOSS OR THEFT, OR OTHER SECURITY INTRUSION ("Vulnerability Issues"). RENESAS ELECTRONICS DISCLAIMS ANY AND ALL RESPONSIBILITY OR LIABILITY ARISING FROM OR RELATED TO ANY VULNERABILITY ISSUES. FURTHERMORE, TO THE EXTENT PERMITTED BY APPLICABLE LAW, RENESAS ELECTRONICS DISCLAIMS ANY AND ALL WARRANTIES, EXPRESS OR IMPLIED, WITH RESPECT TO THIS DOCUMENT AND ANY RELATED OR ACCOMPANYING SOFTWARE OR HARDWARE, INCLUDING BUT NOT LIMITED TO THE IMPLIED WARRANTIES OF MERCHANTABILITY, OR FITNESS FOR A PARTICULAR PURPOSE.
 8. When using Renesas Electronics products, refer to the latest product information (data sheets, user's manuals, application notes, "General Notes for Handling and Using Semiconductor Devices" in the reliability handbook, etc.), and ensure that usage conditions are within the ranges specified by Renesas Electronics with respect to maximum ratings, operating power supply voltage range, heat dissipation characteristics, installation, etc. Renesas Electronics disclaims any and all liability for any malfunctions, failure or accident arising out of the use of Renesas Electronics products outside of such specified ranges.
 9. Although Renesas Electronics endeavors to improve the quality and reliability of Renesas Electronics products, semiconductor products have specific characteristics, such as the occurrence of failure at a certain rate and malfunctions under certain use conditions. Unless designated as a high reliability product or a product for harsh environments in a Renesas Electronics data sheet or other Renesas Electronics document, Renesas Electronics products are not subject to radiation resistance design. You are responsible for implementing safety measures to guard against the possibility of bodily injury, injury or damage caused by fire, and/or danger to the public in the event of a failure or malfunction of Renesas Electronics products, such as safety design for hardware and software, including but not limited to redundancy, fire control and malfunction prevention, appropriate treatment for aging degradation or any other appropriate measures. Because the evaluation of microcomputer software alone is very difficult and impractical, you are responsible for evaluating the safety of the final products or systems manufactured by you.
 10. Please contact a Renesas Electronics sales office for details as to environmental matters such as the environmental compatibility of each Renesas Electronics product. You are responsible for carefully and sufficiently investigating applicable laws and regulations that regulate the inclusion or use of controlled substances, including without limitation, the EU RoHS Directive, and using Renesas Electronics products in compliance with all these applicable laws and regulations. Renesas Electronics disclaims any and all liability for damages or losses occurring as a result of your noncompliance with applicable laws and regulations.
 11. Renesas Electronics products and technologies shall not be used for or incorporated into any products or systems whose manufacture, use, or sale is prohibited under any applicable domestic or foreign laws or regulations. You shall comply with any applicable export control laws and regulations promulgated and administered by the governments of any countries asserting jurisdiction over the parties or transactions.
 12. It is the responsibility of the buyer or distributor of Renesas Electronics products, or any other party who distributes, disposes of, or otherwise sells or transfers the product to a third party, to notify such third party in advance of the contents and conditions set forth in this document.
 13. This document shall not be reprinted, reproduced or duplicated in any form, in whole or in part, without prior written consent of Renesas Electronics.
 14. Please contact a Renesas Electronics sales office if you have any questions regarding the information contained in this document or Renesas Electronics products.

(Note1) "Renesas Electronics" as used in this document means Renesas Electronics Corporation and also includes its directly or indirectly controlled subsidiaries.

(Note2) "Renesas Electronics product(s)" means any product developed or manufactured by or for Renesas Electronics.

(Rev.5.0-1 October 2020)

Corporate Headquarters

TOYOSU FORESIA, 3-2-24 Toyosu,
Koto-ku, Tokyo 135-0061, Japan
www.renesas.com

Trademarks

Renesas and the Renesas logo are trademarks of Renesas Electronics Corporation. All trademarks and registered trademarks are the property of their respective owners.

Contact information

For further information on a product, technology, the most up-to-date version of a document, or your nearest sales office, please visit:
www.renesas.com/contact/.