

To our customers,

Old Company Name in Catalogs and Other Documents

On April 1st, 2010, NEC Electronics Corporation merged with Renesas Technology Corporation, and Renesas Electronics Corporation took over all the business of both companies. Therefore, although the old company name remains in this document, it is a valid Renesas Electronics document. We appreciate your understanding.

Renesas Electronics website: <http://www.renesas.com>

April 1st, 2010
Renesas Electronics Corporation

Issued by: Renesas Electronics Corporation (<http://www.renesas.com>)

Send any inquiries to <http://www.renesas.com/inquiry>.

Notice

1. All information included in this document is current as of the date this document is issued. Such information, however, is subject to change without any prior notice. Before purchasing or using any Renesas Electronics products listed herein, please confirm the latest product information with a Renesas Electronics sales office. Also, please pay regular and careful attention to additional and different information to be disclosed by Renesas Electronics such as that disclosed through our website.
2. Renesas Electronics does not assume any liability for infringement of patents, copyrights, or other intellectual property rights of third parties by or arising from the use of Renesas Electronics products or technical information described in this document. No license, express, implied or otherwise, is granted hereby under any patents, copyrights or other intellectual property rights of Renesas Electronics or others.
3. You should not alter, modify, copy, or otherwise misappropriate any Renesas Electronics product, whether in whole or in part.
4. Descriptions of circuits, software and other related information in this document are provided only to illustrate the operation of semiconductor products and application examples. You are fully responsible for the incorporation of these circuits, software, and information in the design of your equipment. Renesas Electronics assumes no responsibility for any losses incurred by you or third parties arising from the use of these circuits, software, or information.
5. When exporting the products or technology described in this document, you should comply with the applicable export control laws and regulations and follow the procedures required by such laws and regulations. You should not use Renesas Electronics products or the technology described in this document for any purpose relating to military applications or use by the military, including but not limited to the development of weapons of mass destruction. Renesas Electronics products and technology may not be used for or incorporated into any products or systems whose manufacture, use, or sale is prohibited under any applicable domestic or foreign laws or regulations.
6. Renesas Electronics has used reasonable care in preparing the information included in this document, but Renesas Electronics does not warrant that such information is error free. Renesas Electronics assumes no liability whatsoever for any damages incurred by you resulting from errors in or omissions from the information included herein.
7. Renesas Electronics products are classified according to the following three quality grades: "Standard", "High Quality", and "Specific". The recommended applications for each Renesas Electronics product depends on the product's quality grade, as indicated below. You must check the quality grade of each Renesas Electronics product before using it in a particular application. You may not use any Renesas Electronics product for any application categorized as "Specific" without the prior written consent of Renesas Electronics. Further, you may not use any Renesas Electronics product for any application for which it is not intended without the prior written consent of Renesas Electronics. Renesas Electronics shall not be in any way liable for any damages or losses incurred by you or third parties arising from the use of any Renesas Electronics product for an application categorized as "Specific" or for which the product is not intended where you have failed to obtain the prior written consent of Renesas Electronics. The quality grade of each Renesas Electronics product is "Standard" unless otherwise expressly specified in a Renesas Electronics data sheets or data books, etc.

"Standard": Computers; office equipment; communications equipment; test and measurement equipment; audio and visual equipment; home electronic appliances; machine tools; personal electronic equipment; and industrial robots.

"High Quality": Transportation equipment (automobiles, trains, ships, etc.); traffic control systems; anti-disaster systems; anti-crime systems; safety equipment; and medical equipment not specifically designed for life support.

"Specific": Aircraft; aerospace equipment; submersible repeaters; nuclear reactor control systems; medical equipment or systems for life support (e.g. artificial life support devices or systems), surgical implantations, or healthcare intervention (e.g. excision, etc.), and any other applications or purposes that pose a direct threat to human life.

8. You should use the Renesas Electronics products described in this document within the range specified by Renesas Electronics, especially with respect to the maximum rating, operating supply voltage range, movement power voltage range, heat radiation characteristics, installation and other product characteristics. Renesas Electronics shall have no liability for malfunctions or damages arising out of the use of Renesas Electronics products beyond such specified ranges.
9. Although Renesas Electronics endeavors to improve the quality and reliability of its products, semiconductor products have specific characteristics such as the occurrence of failure at a certain rate and malfunctions under certain use conditions. Further, Renesas Electronics products are not subject to radiation resistance design. Please be sure to implement safety measures to guard them against the possibility of physical injury, and injury or damage caused by fire in the event of the failure of a Renesas Electronics product, such as safety design for hardware and software including but not limited to redundancy, fire control and malfunction prevention, appropriate treatment for aging degradation or any other appropriate measures. Because the evaluation of microcomputer software alone is very difficult, please evaluate the safety of the final products or system manufactured by you.
10. Please contact a Renesas Electronics sales office for details as to environmental matters such as the environmental compatibility of each Renesas Electronics product. Please use Renesas Electronics products in compliance with all applicable laws and regulations that regulate the inclusion or use of controlled substances, including without limitation, the EU RoHS Directive. Renesas Electronics assumes no liability for damages or losses occurring as a result of your noncompliance with applicable laws and regulations.
11. This document may not be reproduced or duplicated, in any form, in whole or in part, without prior written consent of Renesas Electronics.
12. Please contact a Renesas Electronics sales office if you have any questions regarding the information contained in this document or Renesas Electronics products, or if you have any other inquiries.

(Note 1) "Renesas Electronics" as used in this document means Renesas Electronics Corporation and also includes its majority-owned subsidiaries.

(Note 2) "Renesas Electronics product(s)" means any product developed or manufactured by or for Renesas Electronics.

Debugging Extension

User's Manual

HS6400IWIN1SE

Renesas Microcomputer
Development Environment
System

Cautions

Keep safety first in your circuit designs!

1. Renesas Technology Corporation puts the maximum effort into making semiconductor products better and more reliable, but there is always the possibility that trouble may occur with them. Trouble with semiconductors may lead to personal injury, fire or property damage. Remember to give due consideration to safety when making your circuit designs, with appropriate measures such as (i) placement of substitutive, auxiliary circuits, (ii) use of nonflammable material or (iii) prevention against any malfunction or mishap.

Notes regarding these materials

1. These materials are intended as a reference to assist our customers in the selection of the Renesas Technology Corporation product best suited to the customer's application; they do not convey any license under any intellectual property rights, or any other rights, belonging to Renesas Technology Corporation or a third party.
2. Renesas Technology Corporation assumes no responsibility for any damage, or infringement of any third-party's rights, originating in the use of any product data, diagrams, charts, programs, algorithms, or circuit application examples contained in these materials.
3. All information contained in these materials, including product data, diagrams, charts, programs and algorithms represents information on products at the time of publication of these materials, and are subject to change by Renesas Technology Corporation without notice due to product improvements or other reasons. It is therefore recommended that customers contact Renesas Technology Corporation or an authorized Renesas Technology Corporation product distributor for the latest product information before purchasing a product listed herein. The information described here may contain technical inaccuracies or typographical errors. Renesas Technology Corporation assumes no responsibility for any damage, liability, or other loss rising from these inaccuracies or errors. Please also pay attention to information published by Renesas Technology Corporation by various means, including the Renesas Technology Corporation Semiconductor home page (<http://www.renesas.com>).
4. When using any or all of the information contained in these materials, including product data, diagrams, charts, programs, and algorithms, please be sure to evaluate all information as a total system before making a final decision on the applicability of the information and products. Renesas Technology Corporation assumes no responsibility for any damage, liability or other loss resulting from the information contained herein.
5. Renesas Technology Corporation semiconductors are not designed or manufactured for use in a device or system that is used under circumstances in which human life is potentially at stake. Please contact Renesas Technology Corporation or an authorized Renesas Technology Corporation product distributor when considering the use of a product contained herein for any specific purposes, such as apparatus or systems for transportation, vehicular, medical, aerospace, nuclear, or undersea repeater use.
6. The prior written approval of Renesas Technology Corporation is necessary to reprint or reproduce in whole or in part these materials.
7. If these products or technologies are subject to the Japanese export control restrictions, they must be exported under a license from the Japanese government and cannot be imported into a country other than the approved destination. Any diversion or reexport contrary to the export control laws and regulations of Japan and/or the country of destination is prohibited.
8. Please contact Renesas Technology Corporation for further details on these materials or the products contained therein.

The product described in this publication is based on the ITRON specifications and was developed under the guidance of Dr. Ken Sakamura of The University of Tokyo.

1. μ ITRON is an acronym of the “Micro Industrial TRON” and TRON is an acronym of “The Realtime Operating system Nucleus”.
2. Microsoft® Windows® 98 operating system, Microsoft® Windows® Millennium Edition (Windows® ME) operating system, Microsoft® Windows NT® operating system, Microsoft® Windows® 2000 operating system, and Microsoft® Windows® XP operating system are registered trademarks of Microsoft Corporation in the United States and/or other countries.
3. SuperH™ is a trademark of Renesas Technology Corp.
4. All other product names are trademarks or registered trademarks of the respective holders.

Preface

The Debugging Extension (hereafter called the DX) is software for adding the multitasking debugging functions of the Realtime Operating System (hereafter called the RTOS) to the High-performance Embedded Workshop (hereafter called the HEW).

This manual describes how the DX is used.

Please read this manual and the related manuals listed below before use so that you fully understand the DX before using it.

This user's manual contains the following four sections and appendixes:

Section 1	Introduction to the DX
Section 2	How to operate the DX (based on an example)
Section 3	The functions of the DX
Section 4	Precautions and restrictions
Appendix	Troubleshooting

Be sure to read section 4, Precautions and Restrictions, before using the DX.

Please refer to the online help file for details of the DX functions.

The following is a list of the related manuals:

- High-performance Embedded Workshop (HEW) User's Manual
- The user's manual for the RTOS you are using
- The user's manual for the compiler you are using
- The hardware manual and programming manual for the microcomputer you are using

Symbols used in this manual have the following meanings:

[Menu -> Menu Option]: The menu name is on the left of the '->', and the item to be selected from the menu is on the right of the '->'.

(Example: [File -> New...]).

H' and D': The prefix H' is attached for hexadecimal integers. The prefix D' is attached for decimal integers. If no prefix is attached, a decimal integer is assumed.

Contents

Section 1 Overview	1
1.1 Outline	1
1.2 Features	2
1.3 Preparations for Using the DX	2
Section 2 Tutorial	3
2.1 Configuring the Tutorial	3
2.1.1 Configurator	3
2.1.2 Build	3
2.2 Contents of the Sample Program	4
2.3 Executing the Sample Program	5
Section 3 Functions	25
3.1 Referencing the States of Objects	25
3.2 Manipulating the Objects	26
3.3 Displaying Service Call Trace	28
3.4 List of Functions	29
3.4.1 Menu Items	29
3.4.2 Windows and Dialog Boxes	30
Section 4 Precautions and Restrictions	35
4.1 Realtime Operation of the User System and Cyclic Handler	35
4.2 Consistency of Displayed Contents	35
Appendix A Troubleshooting	37
A.1 Displaying [Action Result] Window Results	37

Section 1 Overview

1.1 Outline

The DX is software for debugging applications which are created for the RTOS. It is installed in the HEW and RTOS systems.

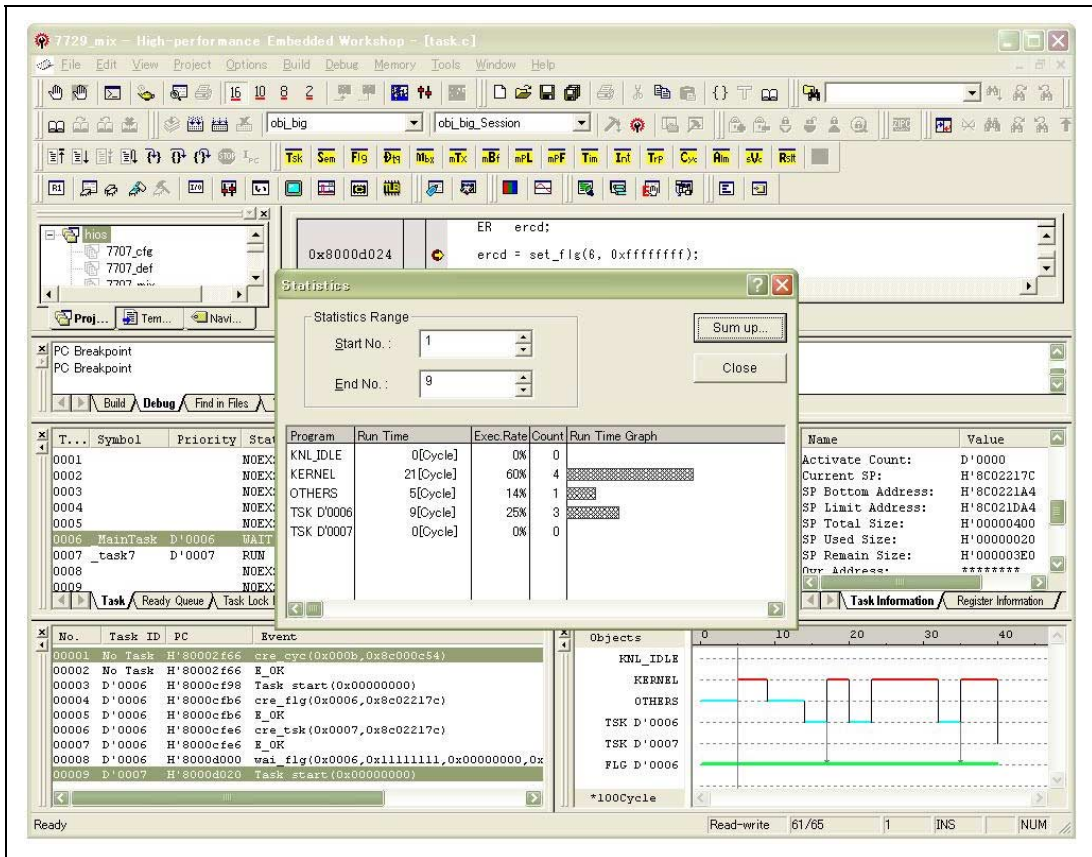


Figure 1.1 DX Overview

1.2 Features

- Graphical user interface
The status of objects such as tasks can be referred to and modified through windows and dialog boxes, and multitasking applications can be debugged in the HEW environment.
- Display of tracing information for service calls
The history of service calls in RTOS systems can be displayed graphically. The user can also select the items to be displayed in this history.

1.3 Preparations for Using the DX

The followings must be done before using the DX for debugging.

Install the DX: Follow the instructions by the installer to install the DX.

Configure the RTOS: Configure the RTOS system you are using to match the DX. For an example of configuration, refer to section 2, Tutorial.

Initiate the HEW: Initiate the HEW so that multitasking debugging is enabled after a program has been built. For examples of the use of the DX, refer to section 2, Tutorial. For the functions of the DX, refer to section 3, Functions, and to the online help file.

Section 2 Tutorial

Examples of the operation of the DX using the HI7000/4 series as the RTOS are explained in this section. For details, refer to the online help file.

The following environment is assumed.

- RTOS: HI7700/4
- Microcomputer: SH7729
- Debugger: SuperH™ RISC engine simulator/debugger

2.1 Configuring the Tutorial

The sample provided by the HI7700/4 is used. For details on the configuration, refer to section 5, Configuration, in the HI7000/4 Series User's Manual.

2.1.1 Configurator

The sample HCF file (hiuser\sh7729\7729.hcf) provided by the HI7700/4 is used to create the configuration file. The following configurator settings must be made.

- Check CFG_ACTION.
- Check CFG_TRACE.
- Set CFG_TRCTYPE to 'emulator trace'. (This setting allows RTOS tracing by the DX even in the simulator.)
- Set CFG_MAXTSKID to seven or more.
- Set CFG_STSTKID to five or less
- Set CFG_MAXTSKPRI to seven or more.
- Set CFG_MAXFLGID to six or more.
- Install the following service calls:
cre_tsk, ext_tsk, cre_flg, wai_flg, and set_flg

2.1.2 Build

The whole linkage method of HI7700/4 is used in this example. Use the HEW to open the sample hios.hws, and select 7729_mix as the project name for the build. Select [Options->SuperH RISC engine Standard Toolchain...] and then [User] from [Gbr relative logic operation] in the [Optimize] category on the [C/C++] page. Select [Build->Build] to start a build.

2.2 Contents of the Sample Program

The sample source program is `hiuser\tutorial\task.c`, which includes two tasks, `MainTask` and `Task7`.

When the system is initiated, `MainTask` is automatically executed because creation and initiation of `MainTask` is specified by the configurator with the following conditions:

- Task ID: 6
- Initial priority: 6
- Start address: `MainTask()`
- Initial state: `READY` (the `TA_ACT` attribute is specified)

`TASK7` is dynamically created by `MainTask` with the following conditions:

- Task ID: 7
- Initial priority level: 7
- Start address: `Task7()`
- Initial state: `READY` (`TA_ACT` attribute is specified)

The priority of `MainTask` is higher.

`MainTask` creates an event flag with ID6 and `Task7`, and uses the service call `wai_flg` to wait for the event flag with ID6. Then, the event flag with ID6 is deleted with the service call `del_flg`, and `MainTask` is exited by the service call `ext_tsk`.

`Task7` uses the service call `set_flg` to set the event flag with ID6, then enters an endless loop with a `while(1);` statement.

Note that this sample program is created for the user to learn the operation of the kernel and the `DX`, and its contents in terms of processing have no meaning.

2.3 Executing the Sample Program

- (1) Start up the simulator/debugger. Select [Options->Debug Settings...] in the HEW to display the [Debug Settings] dialog box. Then select 7729_mix from the list on the left, [SH3-DSP Simulator] from the [Target] list box on the [Target] page, and hiuser\obj_big\7729_mix.abs of HI7000/4 by the [Add...] button, respectively.

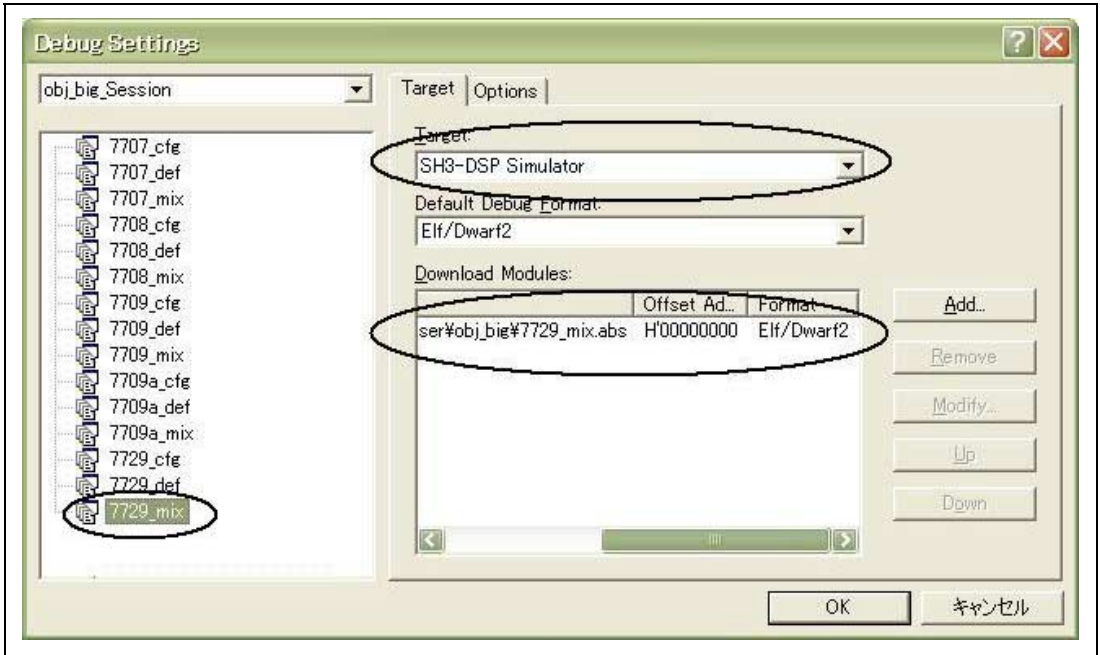


Figure 2.1 [Debug Settings] Dialog Box

(2) Start up the DX. Select [RTOS HI7000/4_4DX ECX] from [Project -> Components...]. Then press [Load] and [OK].

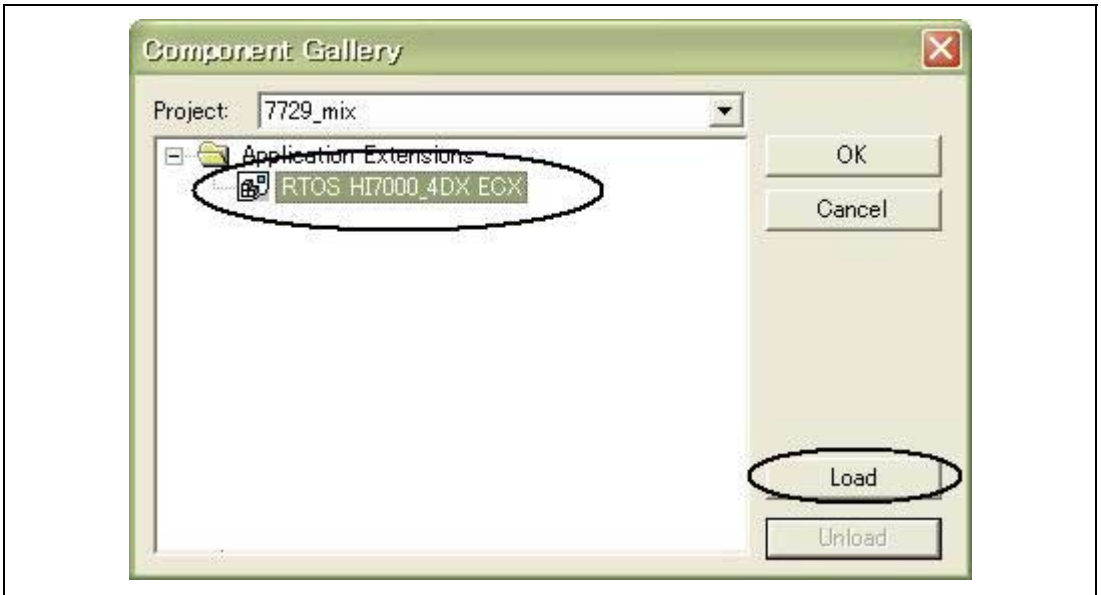


Figure 2.2 [Component Gallery] Dialog Box

- (3) Set up the simulator/debugger. Check [Enable Timer] in the [Simulator System] dialog box displayed by selecting [Options -> Simulator -> System...], and select [Continue] from the [Execution Mode] list box.

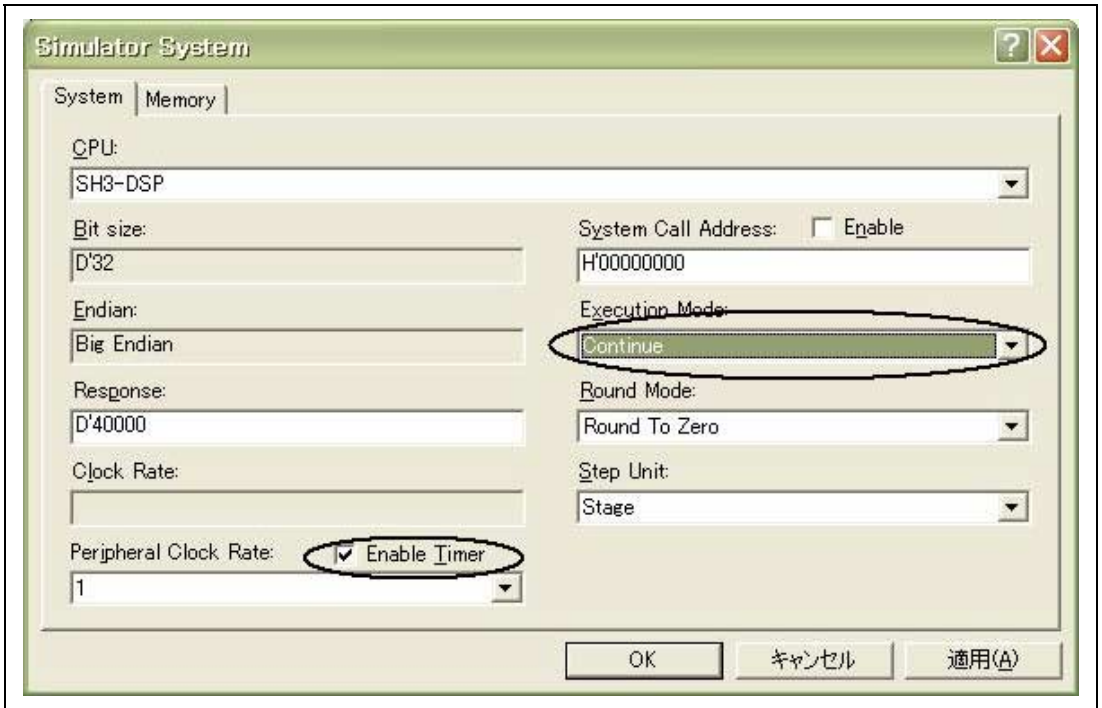


Figure 2.3 [Simulator System] Dialog Box ([System] Page)

(4) The memory resources listed in table 2.1 must be ensured in the [Memory] page of the [Simulator System] dialog box.

Table 2.1 Memory Resources for the Simulator/Debugger

Start Address	End Address	Attribute
H'00000000	H'0000FFFF	Read
H'0C000000	H'0C00FFFF	Read/Write

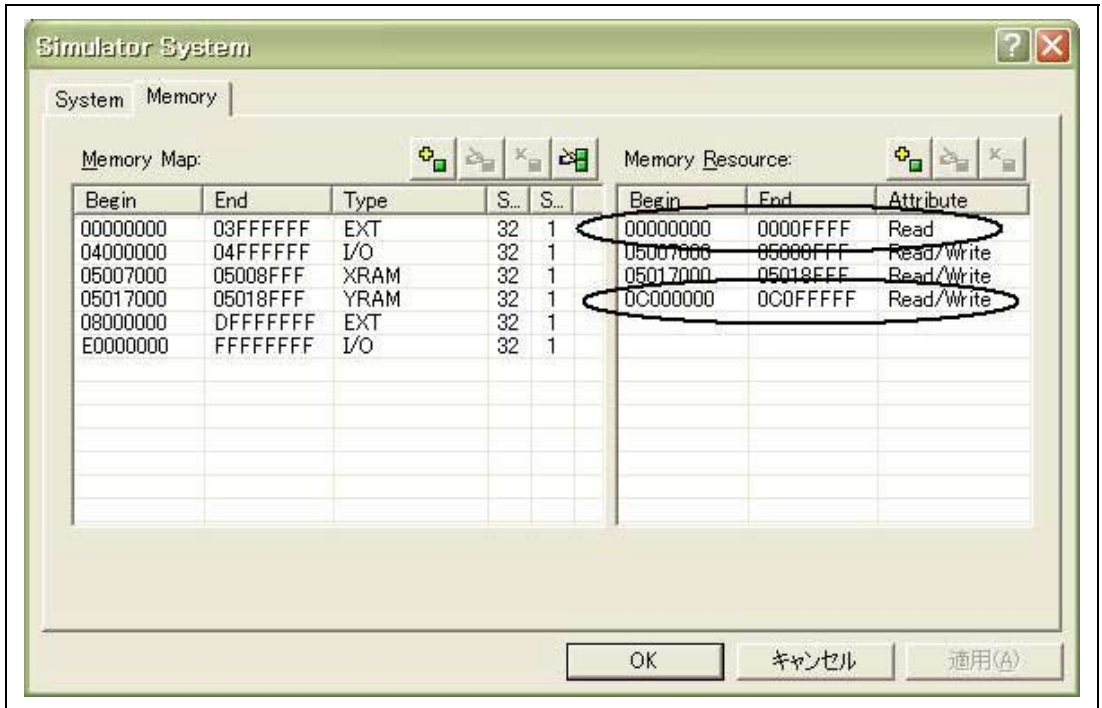


Figure 2.4 [Simulator System] Dialog Box ([Memory] Page)

(5) Download the load module. Select hiuser\obj_big\7729_mix.abs from [Debug->Download Modules].

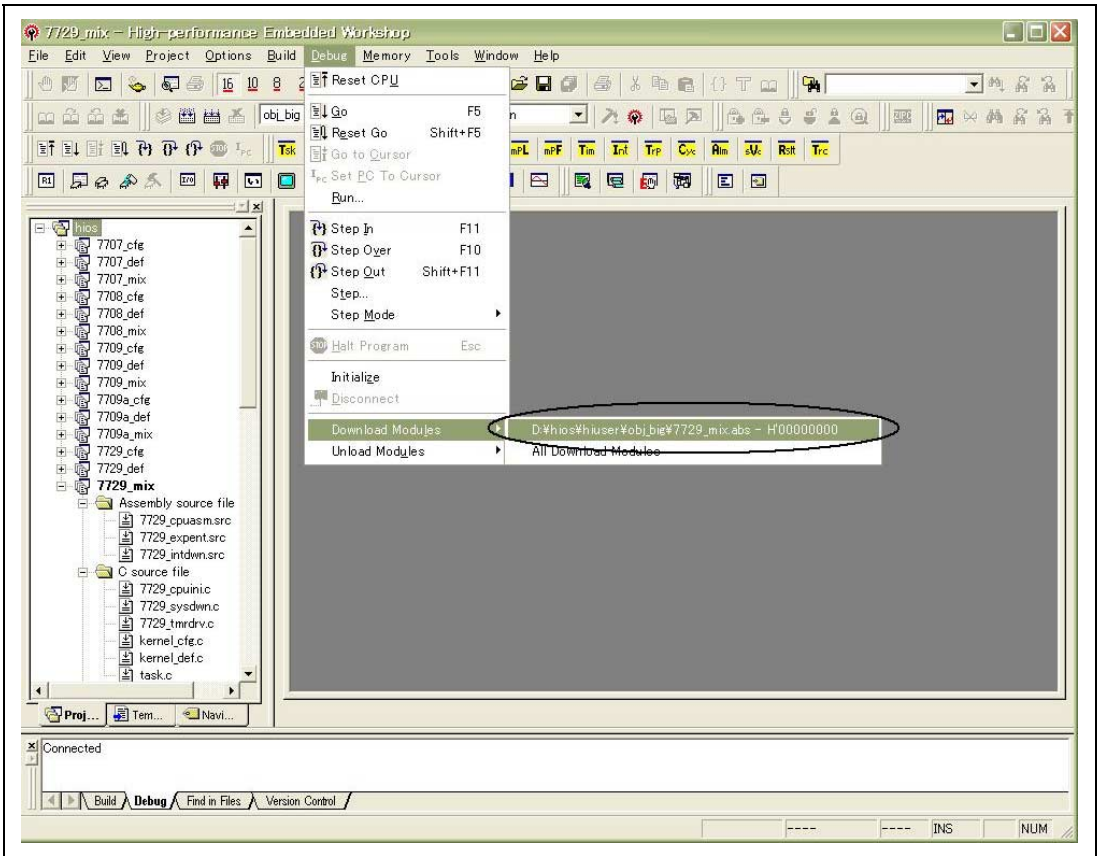


Figure 2.5 Downloading the Load Module

- (6) Make the settings for RTOS tracing. Select [View->RTOS->Trace]. Click the right-hand mouse button on the [RTOS Trace] window and then select [Set Trace Options...] from the popup menu.

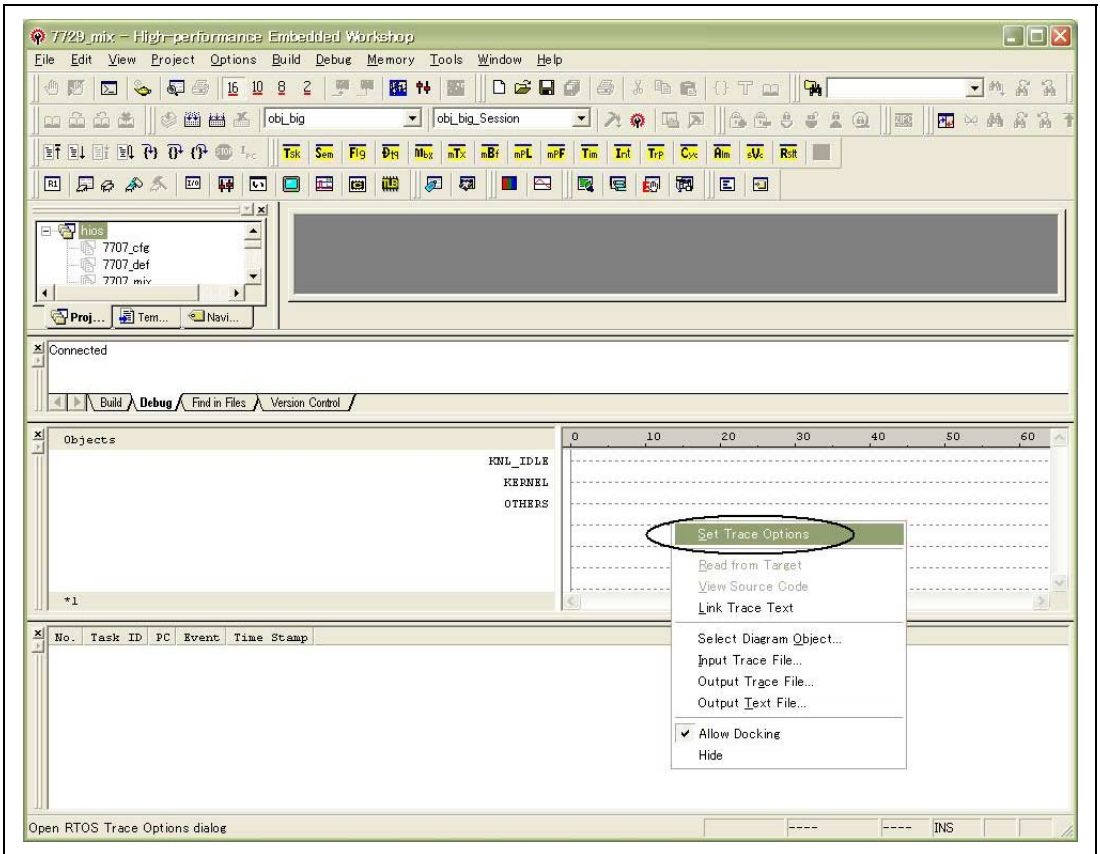


Figure 2.6 Setting RTOS Tracing

(7) Select [Cycle] from [Scale Type] and [*100 Cycle] from [Scale List], respectively.

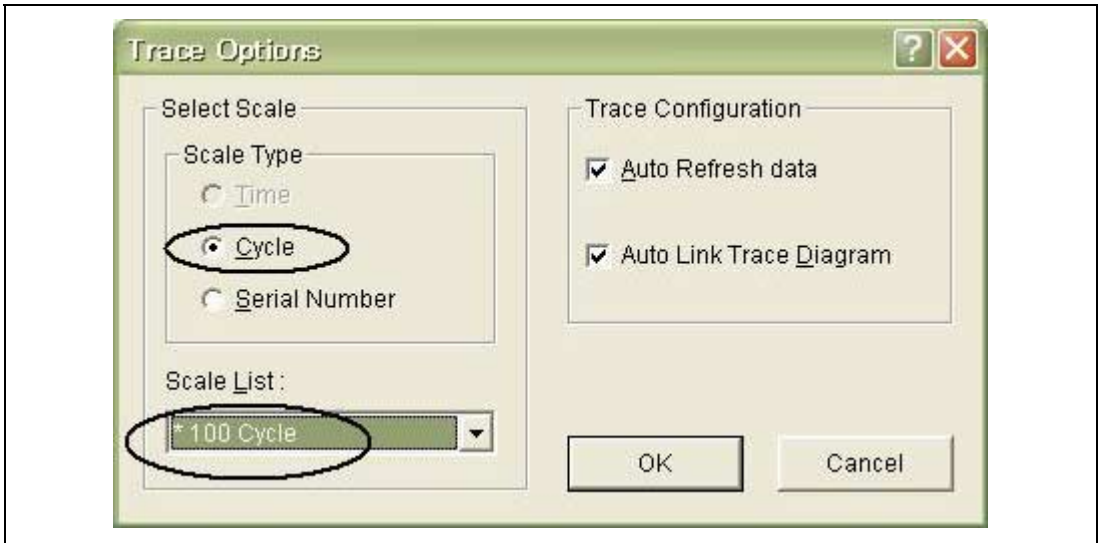


Figure 2.7 [Trace Options] Dialog Box

(8) Select [Debug->Reset Go] to execute the program.

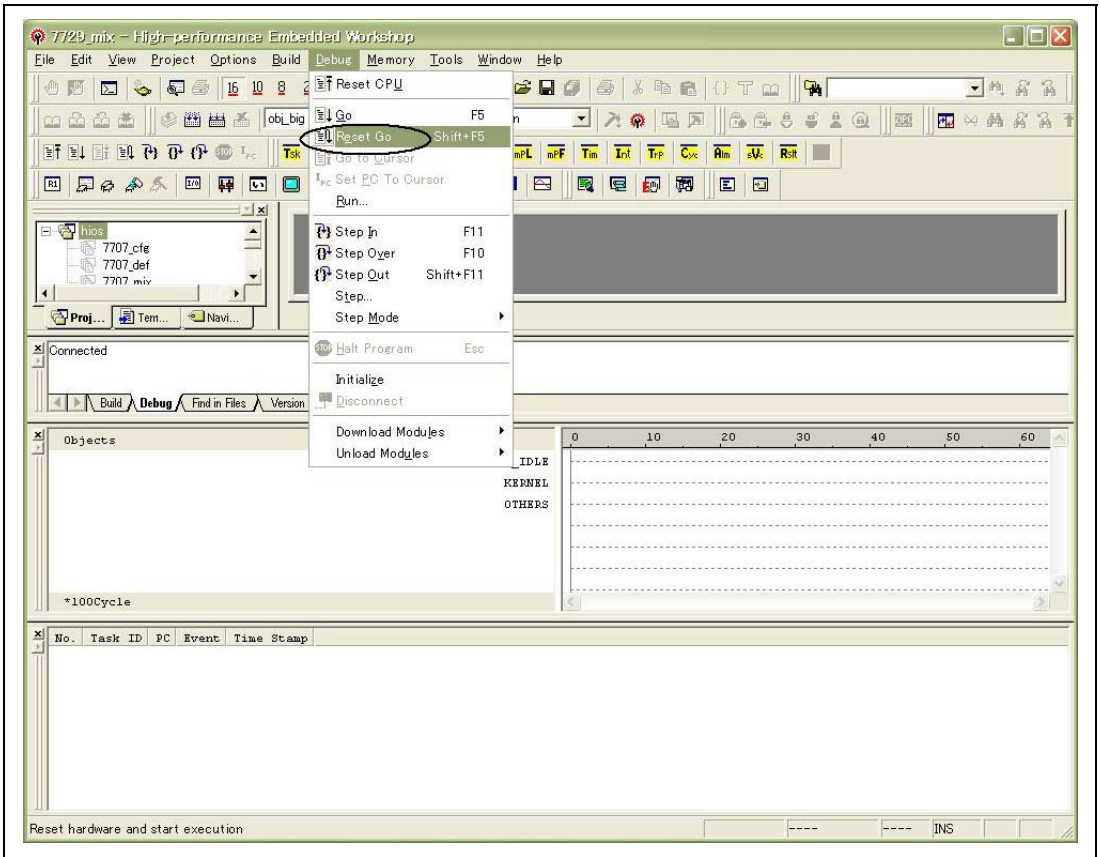


Figure 2.8 Executing the Program

(9) Select [Debug->Halt Program] to stop the program execution.

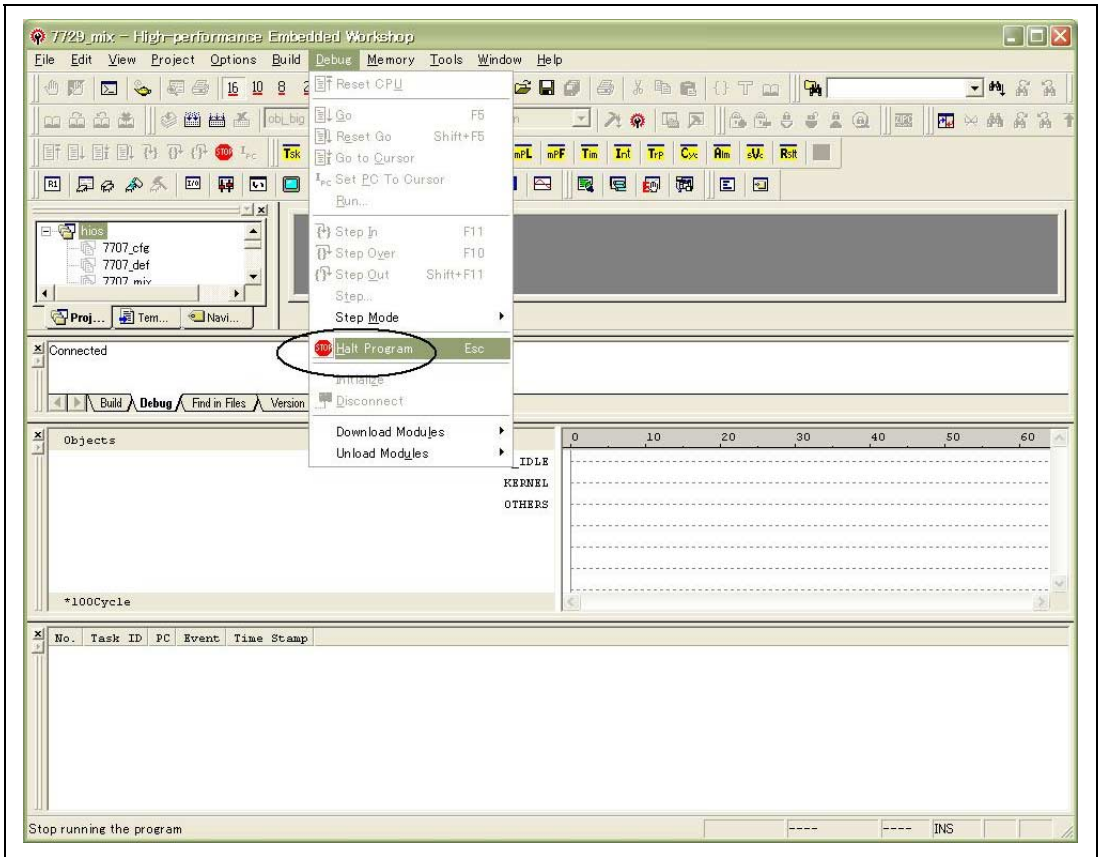


Figure 2.9 Stopping the Program Execution

(10) Execution stops within the while(1); statement of Task7 as shown in figure 2.10.

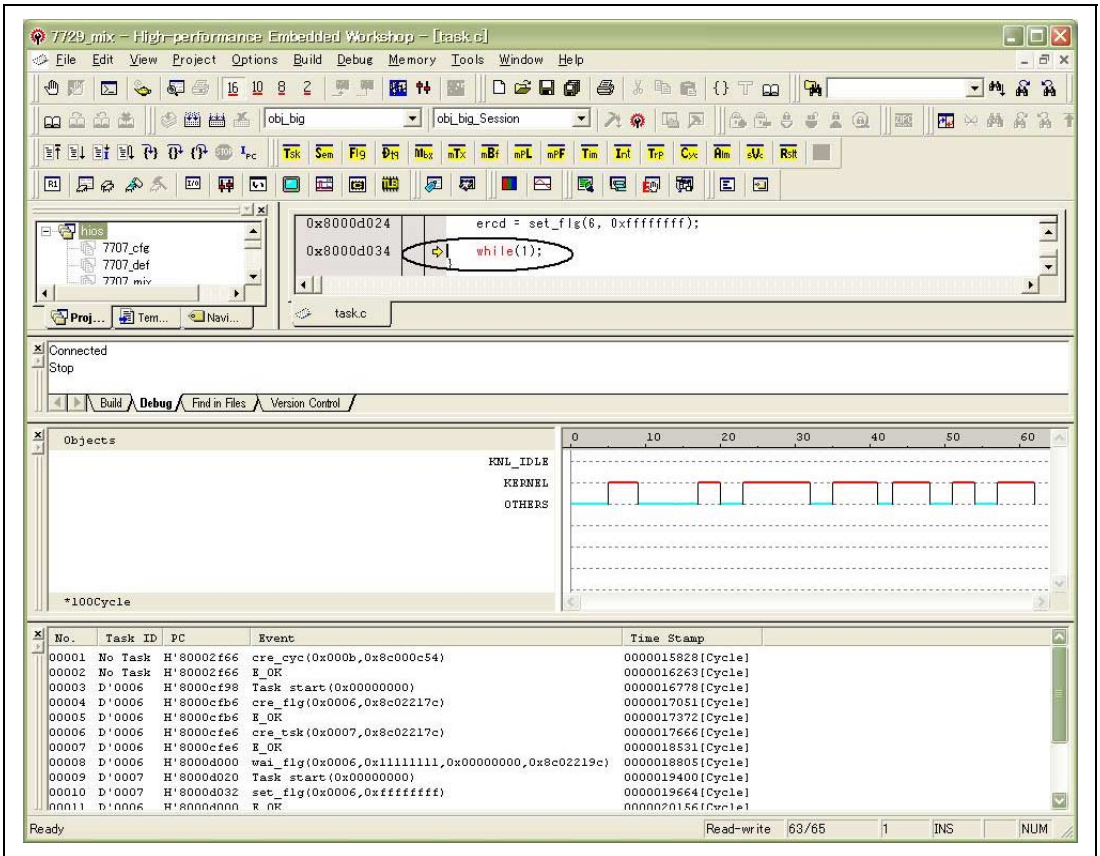


Figure 2.10 Source Window with the Execution Stopped

- (11) You can check how the program was executed by using the service-call trace function. To display MainTask (task ID 6) and Task7 (task ID 7) in such a way that the diagram is easy to see, click the right-hand mouse button on the [RTOS Trace] window and select [Select Diagram Object...] from the pop-up menu. Add task IDs 6 and 7, and close the dialog box.

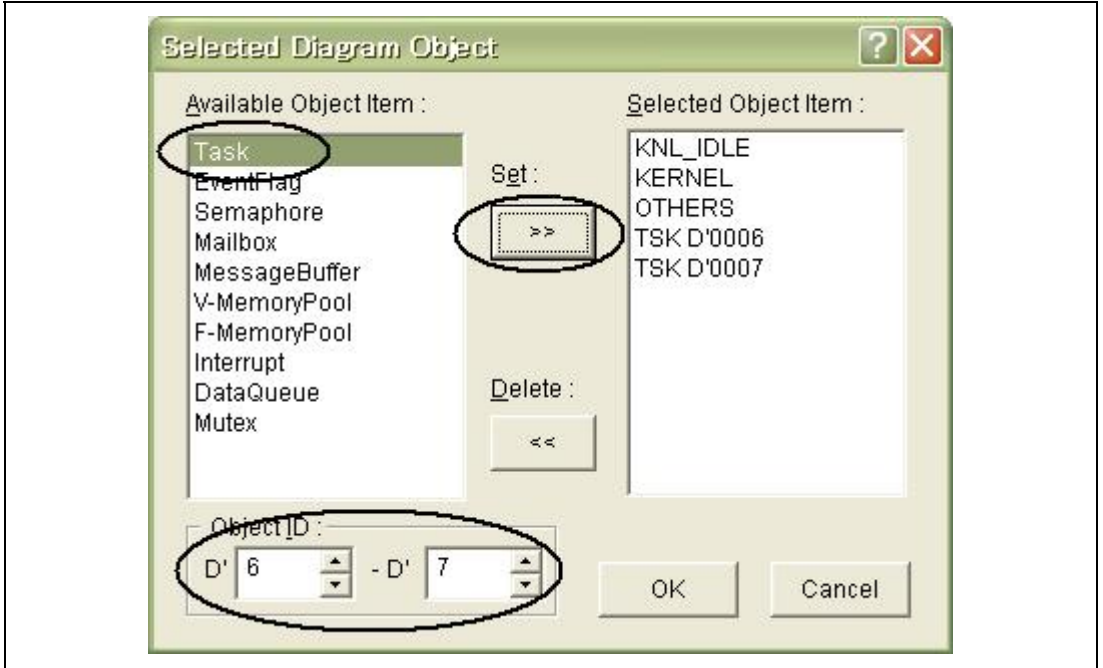


Figure 2.11 [Select Diagram Object] Window

- (12) Task IDs 6 and 7 are displayed in the [RTOS Trace Diagram] window. With a glance at the window, you can see that the execution of Task7 starts after MainTask has issued `wai_flg`. Double-clicking the row where the service call is displayed in the [RTOS Trace Text] window opens the corresponding source window.

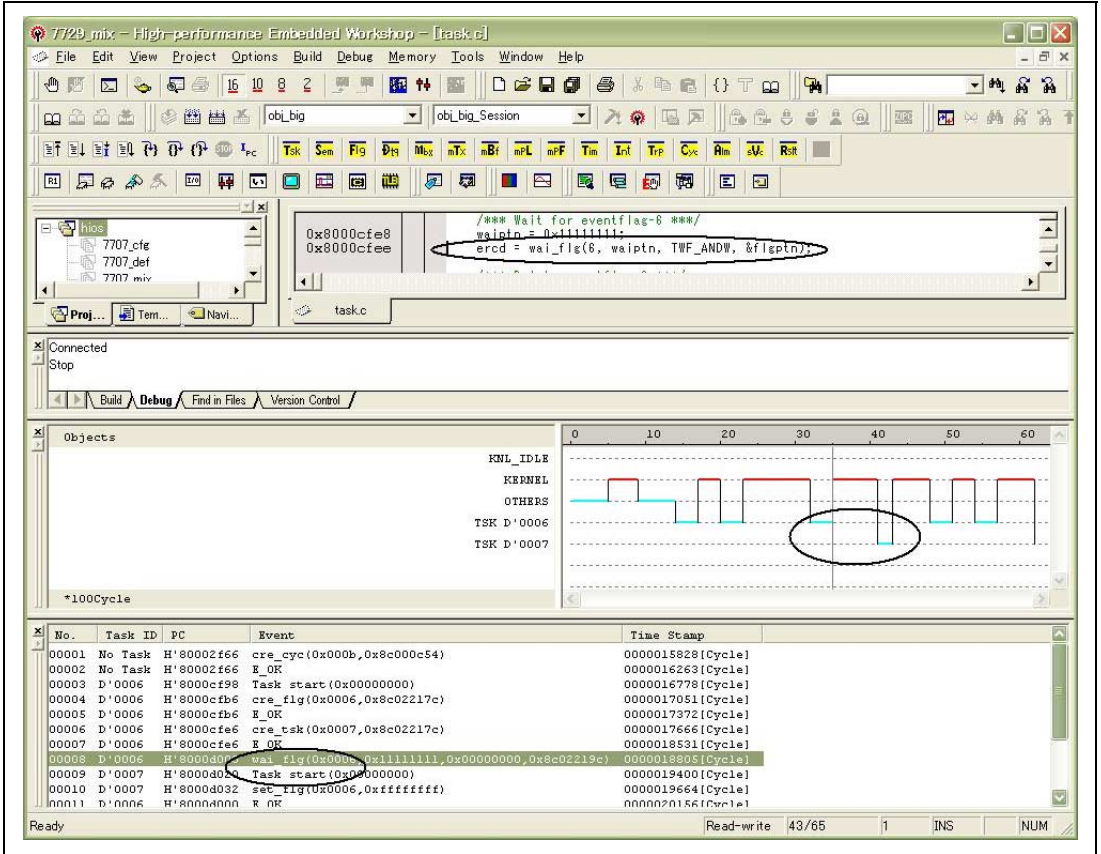


Figure 2.12 [RTOS Trace] Window

- (13) You can check the states of MainTask and Task7 in the [Task] window. Select [View ->RTOS->Task] to open the [Task] window. The MainTask is in the DORMANT state, while Task7 is in the RUN state.

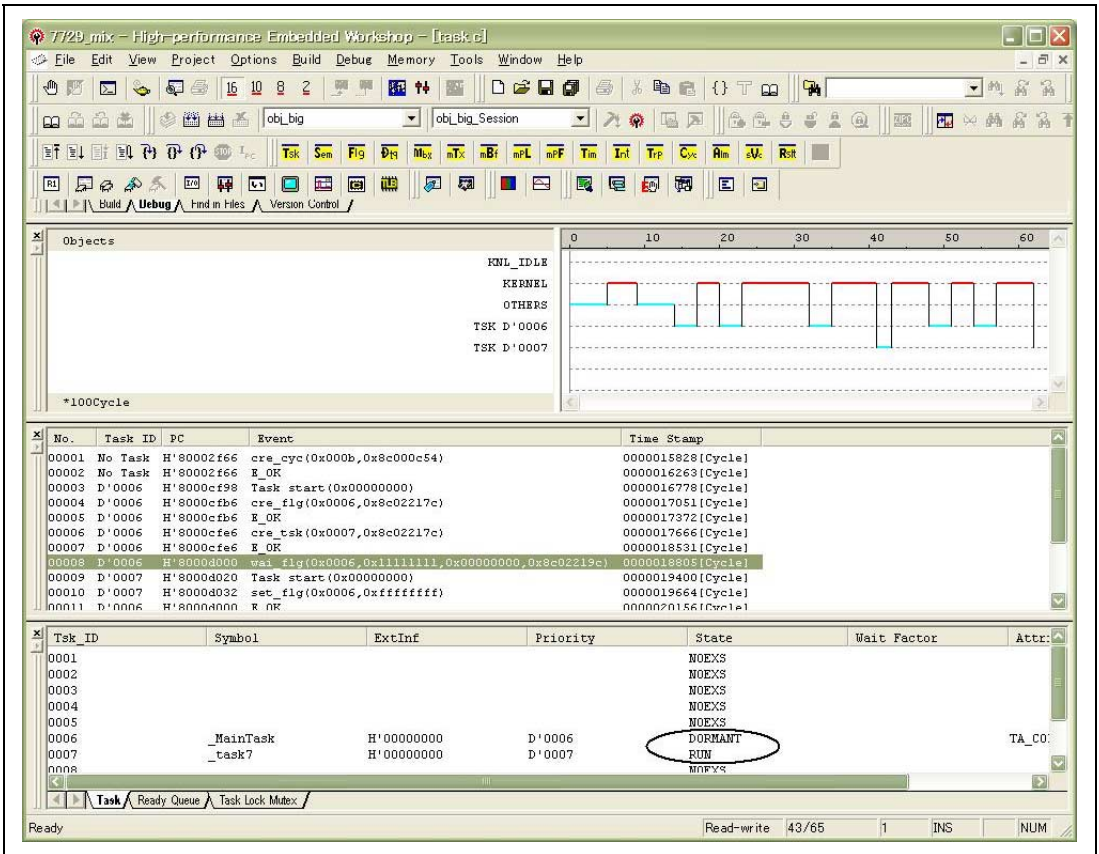


Figure 2.13 [Task] Window

- (14) Next, execute the user program when the priority of MainTask is lower than Task7. First, MainTask and Task7 must be deleted to return them to their initial state. To delete MainTask, select (highlight) MainTask in the [Task] window, click the right-hand mouse button to launch the pop-up menu, then select [Action->Delete Task...] from this pop-up menu.

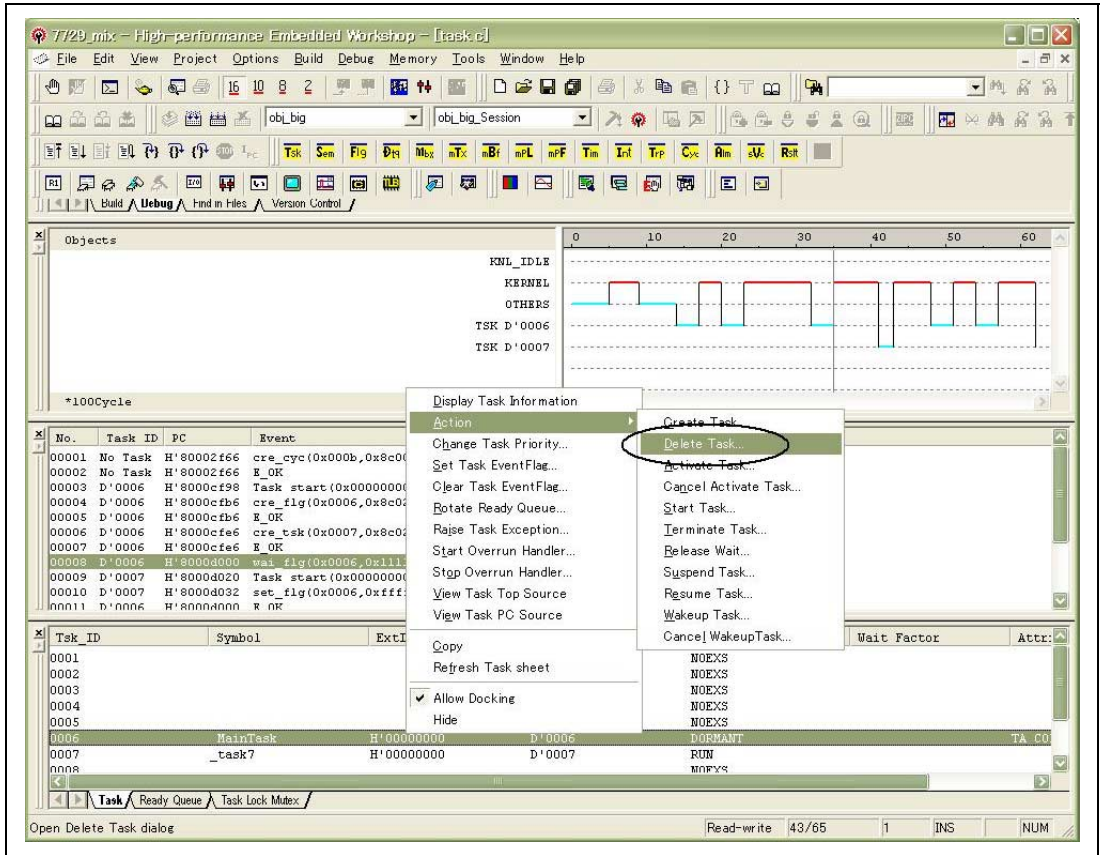


Figure 2.14 [Task] Window Pop-Up Menu

(15) Press the [OK] button in the [Delete Task] dialog box.

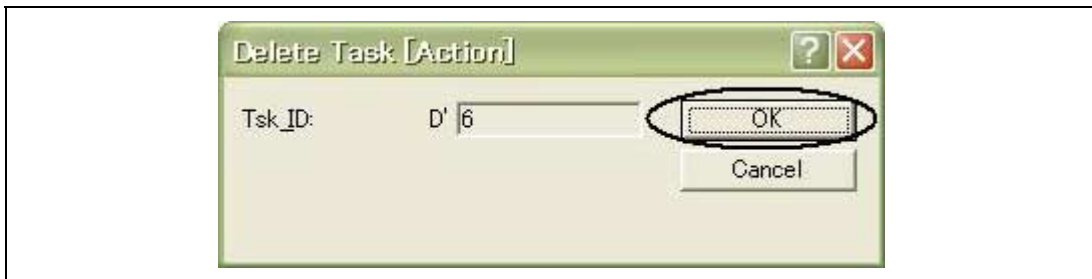


Figure 2.15 [Delete Task] Dialog Box

(16) Since Task7 is still in the RUN state, it must be forcibly terminated before deletion. To terminate Task7, select (highlight) Task7 in the [Task] window, click the right-hand mouse button to launch the pop-up menu, then select [Action->Terminate Task...]. This opens the [Terminate Task] dialog box, so press the [OK] button. Task7 can then be deleted in the same way as MainTask.



Figure 2.16 [Terminate Task] Dialog Box

- (17) You can check the result of the manipulation of kernel objects, such as the termination and deletion of a task, by selecting [View->RTOS->Action Result]. However, even if the [Action Result] window is opened, the results will not be visible here. The DX sends requests for the execution of service calls to the kernel to realize manipulation of kernel objects. Thus a task will be actually deleted after execution by the kernel. To obtain the results in this case, resume the execution of the target by selecting [Debug->Go]. The results will be automatically displayed. Then select [Refresh task sheet] from the pop-up menu of the [Task] window. You will see that MainTask (task ID 6) and Task7 (task ID 7) are both in the NOEXS state.

The screenshot displays the HPEW interface with the following components:

- Event Log:** A table showing system events. The entry for task ID 6 (MainTask) is highlighted in green, showing it is in the NOEXS state.

No.	Task ID	PC	Event	Time Stamp
00001	No Task	H'80002f66	cre_cyc(0x000b,0x8c000c54)	0000015827[Cycle]
00002	No Task	H'80002f66	E_OK	0000016262[Cycle]
00003	D'0006	H'8000cf98	Task_start(0x00000000)	0000016777[Cycle]
00004	D'0006	H'8000cf98	cre_flg(0x0006,0x8c02217c)	0000017050[Cycle]
00005	D'0006	H'8000cf98	E_OK	0000017371[Cycle]
00006	D'0006	H'8000cf98	cre_tsk(0x0007,0x8c02217c)	0000017665[Cycle]
00007	D'0006	H'8000cf98	E_OK	0000018530[Cycle]
00008	D'0006	H'8000d000	wai_flg(0x0006,0x11111111,0x00000000,0x8c02219c)	0000018804[Cycle]
00009	D'0007	H'8000d020	Task_start(0x00000000)	0000019399[Cycle]
00010	D'0007	H'8000d032	set_flg(0x0006,0xffffffff)	0000019663[Cycle]
00011	D'0006	H'8000d000	E_OK	0000020155[Cycle]
- Task List:** A table showing the status of tasks. Tasks 6 and 7 are circled in red, indicating they are in the NOEXS state.

Tsk_ID	Symbol	ExtInf	Priority	State	Wait Factor	Attr:
0001				NOEXS		
0002				NOEXS		
0003				NOEXS		
0004				NOEXS		
0005				NOEXS		
0006				NOEXS		
0007				NOEXS		
0008				NOEXS		
- Task Action Results:** A table showing the results of service calls. The entries for task ID 6 are circled in red.

No.	SVC	Erccd	ReturnParam	Param1	Param2	Param3
00001	DEL_TSK	E_OK		H'00000006		
00002	TER_TSK	E_OK		H'00000007	H'00000000	
00003	DEL_TSK	E_OK		H'00000007		

Figure 2.17 Result of the Manipulation of Objects

- (18) Select [Debug->Halt Program] to stop the program execution. To create and initiate MainTask with a priority of 8 that is lower than Task7, select (highlight) task ID 6 in the [Task] window, and then select [Action->Create Task...] from the pop-up menu. This opens the [Create Task] dialog box. Make the entries as shown in figure 2.18.

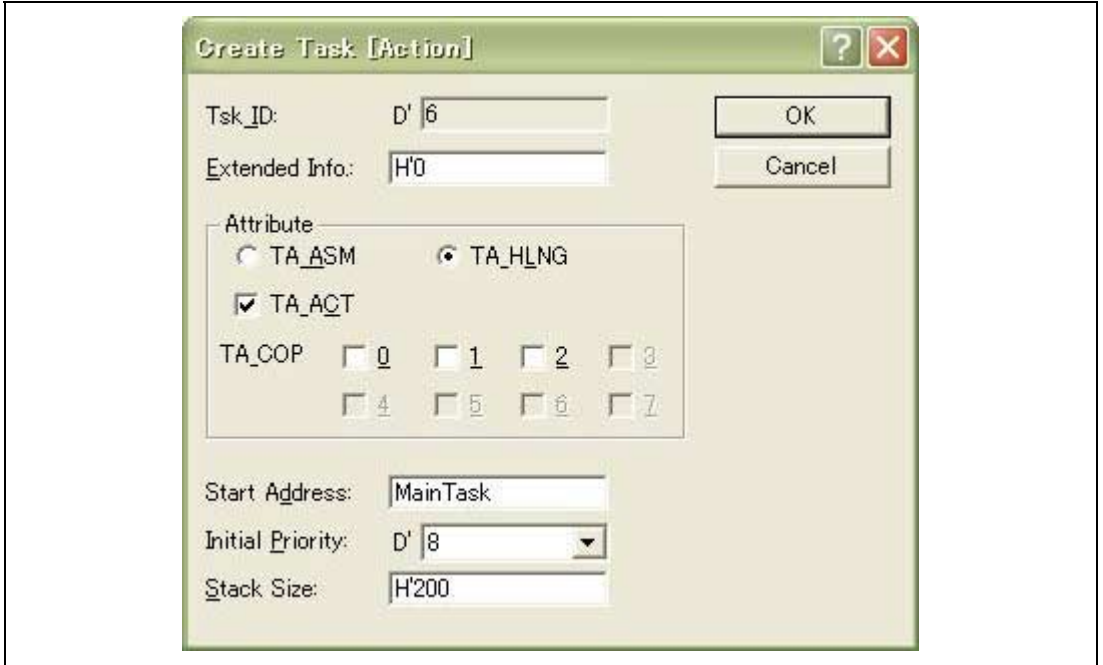


Figure 2.18 [Create Task] Dialog Box

(19) Selecting [Hide] from the pop-up menu of the [Task] window or [Action Result] window will close this window. Before doing so, a breakpoint has to be set so that execution of the program will stop at the while(1); statement of Task7. To set a breakpoint, double-click the part circled in figure 2.19.

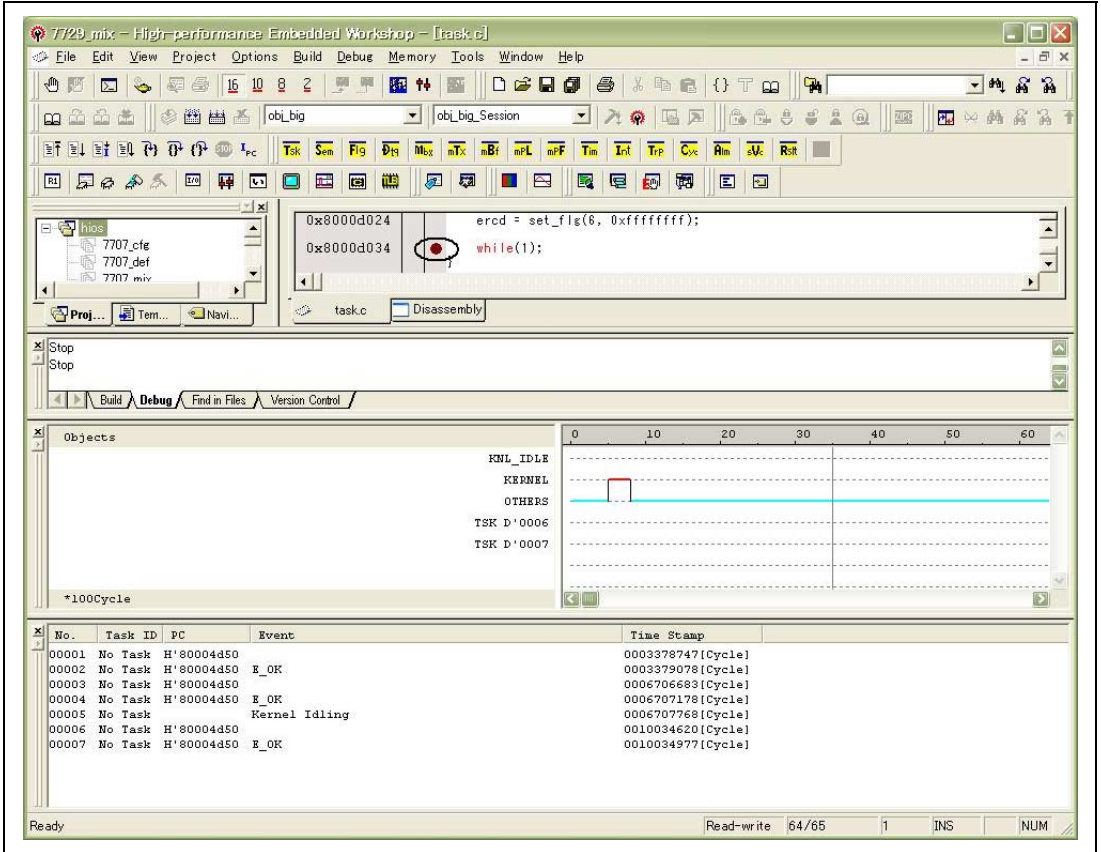


Figure 2.19 Setting a Breakpoint

- (20) When the execution of the target is resumed, MainTask is initiated, and execution stops at the breakpoint which was set at the while(1); statement of Task7. Check the execution by updating the information displayed for the service-call trace. Since the execution is switched to Task7 after the cre_tsk service call by MainTask, MainTask has not yet issued the wai_flg service call.

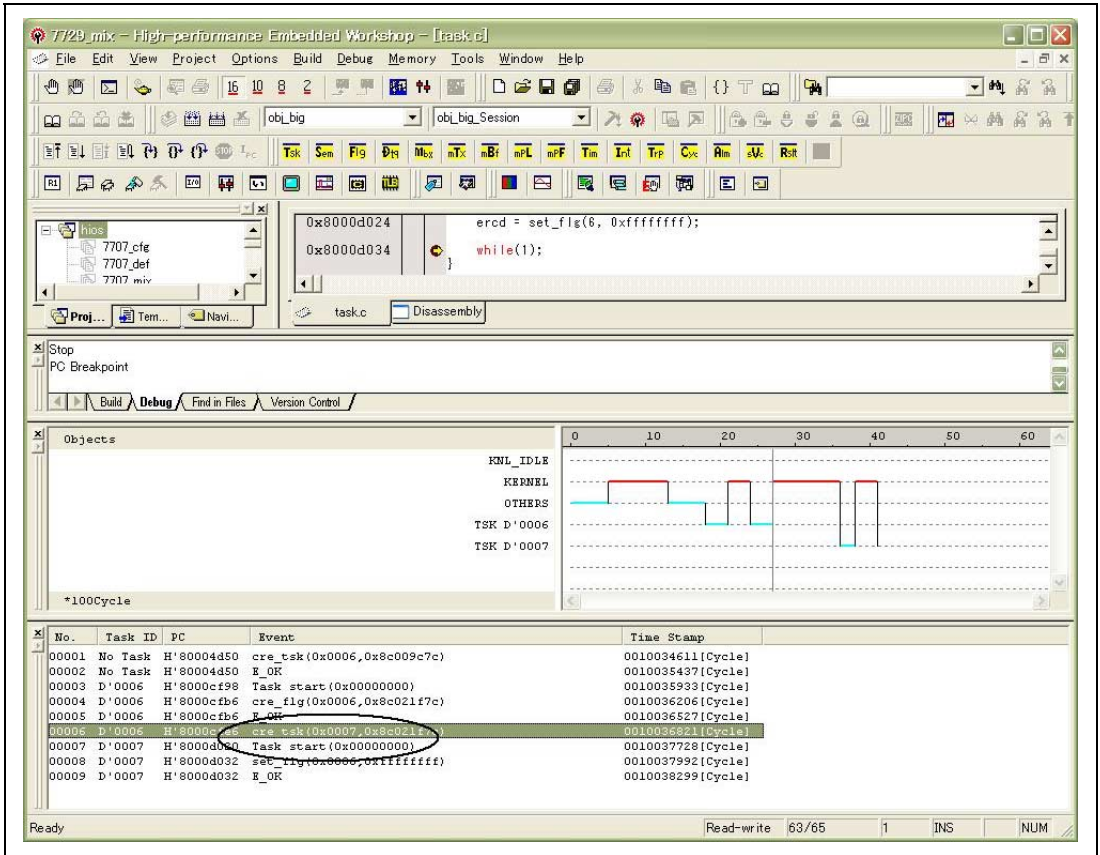


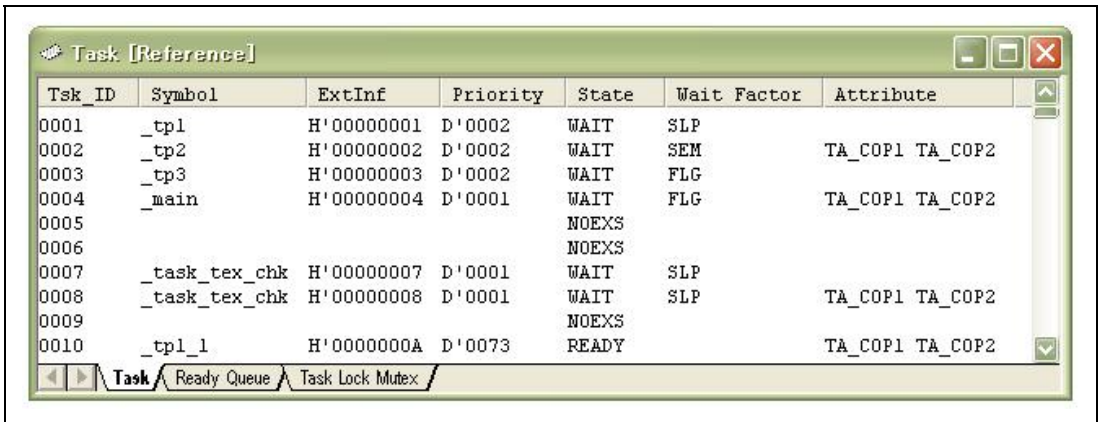
Figure 2.20 [RTOS Trace Diagram] Window and [RTOS Trace Text] Window

Section 3 Functions

This section is an outline of the functions of the DX. For details on these functions, refer to the online help file.

3.1 Referencing the States of Objects

Selecting an object (such as a task) from the [View->RTOS] menu will display a window which shows the state of each object type, as shown in figure 3.1.



Tsk_ID	Symbol	ExtInf	Priority	State	Wait Factor	Attribute
0001	_tp1	H'00000001	D'0002	WAIT	SLP	
0002	_tp2	H'00000002	D'0002	WAIT	SEM	TA_COP1 TA_COP2
0003	_tp3	H'00000003	D'0002	WAIT	FLG	
0004	_main	H'00000004	D'0001	WAIT	FLG	TA_COP1 TA_COP2
0005				NOEXS		
0006				NOEXS		
0007	_task_tex_chk	H'00000007	D'0001	WAIT	SLP	
0008	_task_tex_chk	H'00000008	D'0001	WAIT	SLP	TA_COP1 TA_COP2
0009				NOEXS		
0010	_tp1_1	H'0000000A	D'0073	READY		TA_COP1 TA_COP2

Figure 3.1 Example Display of Task State

3.2 Manipulating the Objects

From the window for each object type, the user can request the manipulation of the object to the kernel. To use this function, the RTOS you are using needs to be configured so as to allow the DX to manipulate the objects.

The manipulation of each object can be requested through the dialog box that can be opened from the pop-up menu of each object window, as shown in figure 3.2.

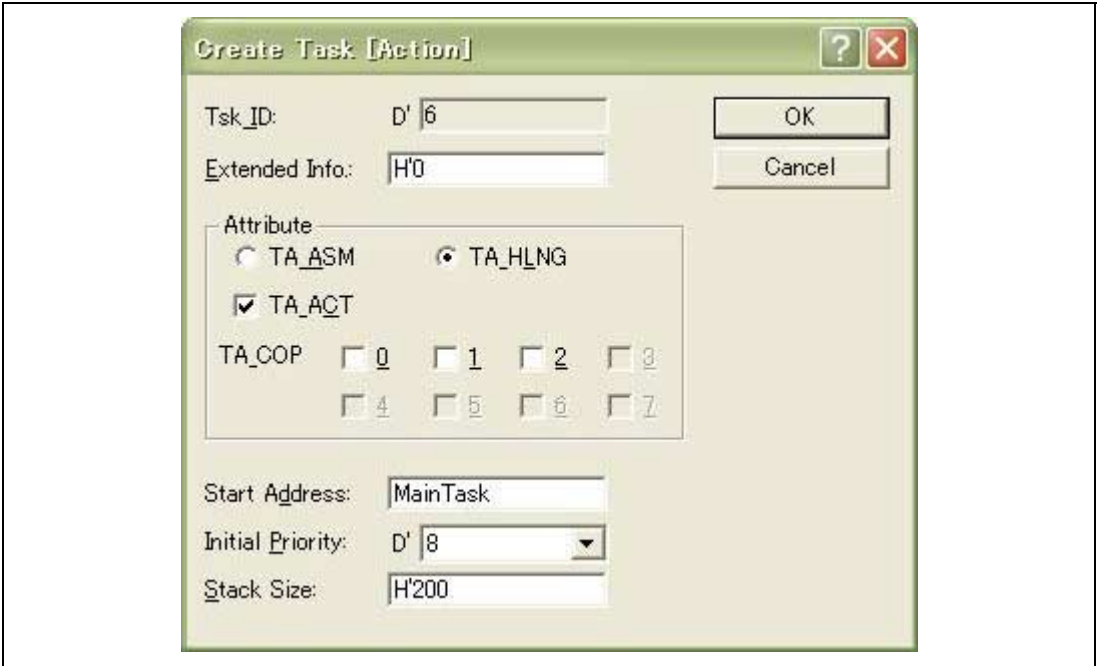


Figure 3.2 Example of a Request for Manipulation of an Object

The request for manipulation of the object is sent to the target, and the corresponding service call is issued. The DX will display the results in the [Action Result] window, as shown in figure 3.3.

No.	SVC	Ercd	ReturnParam	Param1	Param2	Param3	Param4
00001	DEL_TSK	E_OK		H'00000006			
00002	TER_TSK	E_OK		H'00000007	H'00000000		
00003	DEL_TSK	E_OK		H'00000007			
00004	CRE_TSK	E_OK		H'00000006	H'8C009D54		
00005	VSCR_TSK	E_OK		H'00000001	H'8C009C7C		
00006	STA_TSK	E_OK		H'00000001	H'00000000		

Figure 3.3 Result of Manipulation of an Object

The processing of the request for manipulation of an object starts when the target is executed. A request can be made for the manipulation of the object after the target has been stopped, but execution will not start until the next execution of the target.

The request for manipulation of the object is queued in the target memory, and the release of the request from the queue is indicated by the display of the result in the [Action Result] window. Up to four requests can be queued.

If manipulation of an object is requested after the target has been stopped, the result is not displayed in the [Action Result] window until the next execution of the target. Accordingly, up to four requests for manipulation of an object can be made at the same time while the target is stopped.

The display in the [Action Result] window is updated with the following timing:

- During execution of the target (cyclic)
- [Refresh] is selected from the pop-up menu displayed by clicking the right-hand mouse button in the [Action Result] window
- User system break (stopped)

3.3 Displaying Service Call Trace

When [View->RTOS->Trace] is selected, the history of service calls is displayed in diagrammatic and textual forms, as shown in figure 3.4. To use this function, the RTOS you are using needs to be configured so as to enable display of service call tracing by the DX.

The location of the data that forms the history of service call tracing can be selected as the tool (simulator/debugger or emulator) or the target memory. Depending on the configurator in use, 'Emulator' may be displayed instead of 'Tool'. Note that this configurator can also be used with the simulator/debugger.

The acquired information can be saved in a file, and this file can be read and displayed.

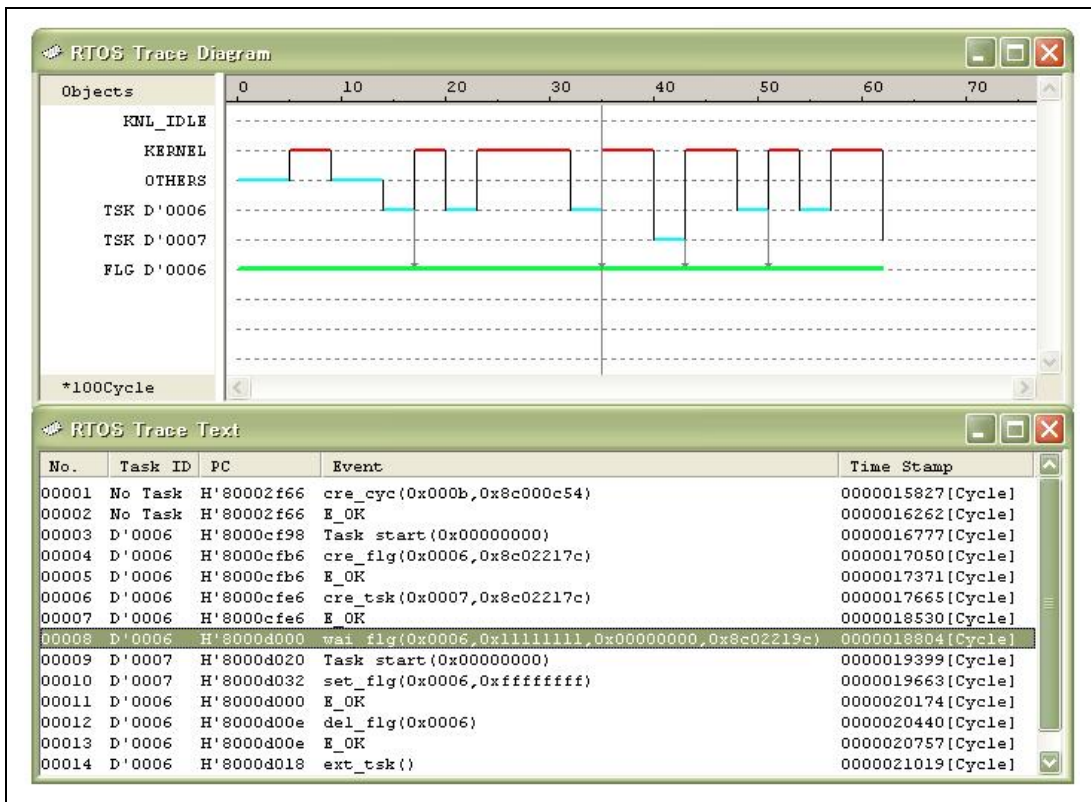


Figure 3.4 [RTOS Trace Diagram] Window and [RTOS Trace Text] Window

3.4 List of Functions

3.4.1 Menu Items

After the DX has been installed, the items listed in table 3.1, which allow accesses to the DX functions, are added to the [View] menu of the HEW.

Table 3.1 Items to be Added to the HEW's [View] Menu

Pull-Down Menu	Submenu	Function
RTOS	Task	Opens the [Task] window
	Semaphore	Opens the [Semaphore] window
	EventFlag	Opens the [EventFlag] window
	DataQueue	Opens the [DataQueue] window
	Mailbox	Opens the [Mailbox] window
	Mutex	Opens the [Mutex] window
	MessageBuffer	Opens the [MessageBuffer] window
	V-MemoryPool	Opens the [V-MemoryPool] window
	F-MemoryPool	Opens the [F-MemoryPool] window
	Timer	Opens the [Timer] window
	Interrupt	Opens the [Interrupt] window
	Trap	Opens the [Trap] window
	Cyclic	Opens the [Cyclic] window
	Alarm	Opens the [Alarm] window
	Extended SVC	Opens the [Extended SVC] window
Action Result	Opens the [Action Result] window	
Trace	Opens the [Trace] window	

Selecting [View->CPU->Status] displays the DX state in the [Status] window common in HEW.

Note that some functions are not supported depending on the RTOS in use.

3.4.2 Windows and Dialog Boxes

Table 3.2 is a list of windows and dialog boxes for the DX. For further details on the windows and dialog boxes, refer to the online help file. The online help file can be launched by selecting [Help ->RTOS Help].

Table 3.2 Windows and Dialog Boxes

Classification	Window Name	Functions
Tasks	[Task] window	<ul style="list-style-type: none">• Displays the states of all tasks• Displays the ready queue• Displays locked mutexes for all tasks
	[Task Detail Information] window	Displays detailed information on tasks
	[Create Task] dialog box*	Creates tasks
	[Delete Task] dialog box*	Deletes tasks
	[Activate Task] dialog box*	Initiates tasks
	[Cancel Activate Task] dialog box*	Cancels request for task initiation
	[Start Task] dialog box*	Initiates task (with initiation code specified)
	[Terminate Task] dialog box*	Forcibly terminates tasks
	[Release Wait] dialog box*	Forces tasks out of the wait state
	[Suspend Task] dialog box*	Moves tasks into SUSPENDED state
	[Resume Task] dialog box*	Resumes the execution of tasks in the SUSPENDED state
	[Wakeup Task] dialog box*	Wakes tasks up
	[Cancel Wakeup Task] dialog box*	Cancels wakeup requests
	[Change Task Priority] dialog box*	Changes task priority levels
	[Set Task EventFlag] dialog box*	Sets task-dependent event flags
	[Clear Task EventFlag] dialog box*	Clears task-dependent event flags
	[Rotate Ready Queue] dialog box*	Rotates the ready queue
	[Raise Task Exception Routine] dialog box*	Requests task exception processing
	[Start Overrun Handler] dialog box*	Starts operation of the overrun handler
	[Stop Overrun Handler] dialog box*	Stops the overrun handler

Note: Cannot be used when the RTOS in use was configured without enabling the manipulation of objects.

Table 3.2 Windows and Dialog Boxes (cont)

Classification	Window Name	Functions
Semaphores	[Semaphore] window	<ul style="list-style-type: none">• Displays states of all semaphores• Displays the wait task queue for each semaphore
	[Increment Semaphore Count] dialog box*	Increments semaphore count
	[Decrement Semaphore Count] dialog box*	Decrements semaphore count
Event flags	[EventFlag] window	<ul style="list-style-type: none">• Displays the states for all event flags• Displays the wait task queue for each event flag
	[Set EventFlag] dialog box*	Sets an event flag
	[Clear EventFlag] dialog box*	Clears an event flag
Data queue	[DataQueue] window	<ul style="list-style-type: none">• Displays the states of all data queues• Displays the receive data acquired in all data queues
	[Send Data to DataQueue] dialog box*	Sends data to data queue
	[DataQueue Wait Task Queue] window	Displays the wait task queue for each data queue
Mailboxes	[Mailbox] window	<ul style="list-style-type: none">• Displays the states of all mailboxes• Displays the wait task queue for each mailbox• Displays the received message queues for all mailboxes
	[Send Message to Mailbox] dialog box*	Sends messages to mailboxes
	[Receive Message from Mailbox] dialog box*	Receive messages from mailboxes
Mutex	[Mutex] window	<ul style="list-style-type: none">• Displays the states of all mutexes• Displays the wait task queue for each mutex

Note: Cannot be used when the RTOS in use was configured without enabling the manipulation of objects.

Table 3.2 Windows and Dialog Boxes (cont)

Classification	Window Name	Functions
Message buffer	[MessageBuffer] window	<ul style="list-style-type: none"> • Displays the states of all message buffers • Displays the wait task queue for each message buffer • Displays the received message queue for each message buffer
	[Send Message to MessageBuffer] dialog box*	Sends messages to message buffers
Variable-size memory pool	[Variable-size MemoryPool] window	<ul style="list-style-type: none"> • Displays the states of all variable-size memory pools • Displays the wait task queue for each variable-size memory pool
	[Get Variable-size MemoryPool] dialog box*	Acquires variable-size memory blocks
	[Release Variable-size MemoryPool] dialog box*	Releases variable-size memory blocks
Fixed-size memory pool	[Fixed-size MemoryPool] window	<ul style="list-style-type: none"> • Displays the states of all fixed-size memory pools • Displays the wait task queue for each fixed-size memory pool
	[Get Fixed-size MemoryPool] dialog box*	Acquires fixed-size memory blocks
	[Release Fixed-size MemoryPool] dialog box*	Releases fixed-size memory blocks
Timer	[Timer] window	<ul style="list-style-type: none"> • Displays the system clock setting • Displays the wait queue for the timer
	[Set Time] dialog box*	Modifies the system clock setting
Interrupt handler, exception processing routine	[Interrupt Handler] window	Displays the states of all interrupt handlers and exception processing routines
Trap exception processing routine	[Trap Routine] window	Displays the states of all trap exception processing routines

Note: Cannot be used when the RTOS in use was configured without enabling the manipulation of objects.

Table 3.2 Windows and Dialog Boxes (cont)

Classification	Window Name	Functions
Cyclic handler	[Cyclic Handler] window	Displays the states of all cyclic handlers
	[Start Cyclic Handler] dialog box*	Starts up cyclic handlers
	[Stop Cyclic Handler] dialog box*	Stops cyclic handlers
Alarm handler	[Alarm Handler] window	Displays the state of all alarm handlers
	[Start Alarm Handler] dialog box*	Starts up alarm handlers
	[Stop Alarm Handler] dialog box*	Stops alarm handlers
Extended SVC routine	[Extended SVC Routine] window	Displays the states of all extended SVC routines
Result	[Action Result] window*	Displays the results of object manipulation
Trace	[RTOS Trace Diagram] window	<ul style="list-style-type: none"> • Displays the object item list • Displays trace information (diagrammatic form)
	[RTOS Trace Text] window	<ul style="list-style-type: none"> • Displays the object item list • Displays trace information (textual form)
	[RTOS Trace Options] dialog box	Makes various settings for trace
	[Select Diagram Object] dialog box	Defines the target object for trace display in the diagrammatic form
	[Select Text Object] dialog box	Defines trace information for the kernel resource
	[Load RTOS Trace Information File] dialog box	Inputs the trace information file
	[RTOS Trace Statistics] dialog box	Displays overall view of program execution
	[RTOS Trace Find] window	Searches for event information
	[Save As] dialog box	Outputs trace information to a file

Note: Cannot be used when the RTOS in use was configured without enabling the manipulation of objects.

Section 4 Precautions and Restrictions

4.1 Realtime Operation of the User System and Cyclic Handler

The DX functions are realized by referencing or updating data in the memory of the user system. If the following functions are used during the execution of the user program, memory access will occur, and operation will not be in realtime.

- Opening or updating a window
- Clicking the [OK] button of a dialog box to manipulate an object

If the RTOS in use was configured with the manipulation of objects enabled, the throughput of the user system falls a little because a cyclic handler for the DX with a certain cycle is automatically installed in the system.

4.2 Consistency of Displayed Contents

Reference to an object's state is by directly reading from data in the memory of the user system. Therefore, if such data is read during the execution of an RTOS kernel routine, the information displayed may not be correct. Also, if an object's state is referred to before the initialization of the kernel has been completed, the information displayed may not be correct.

Appendix A Troubleshooting

A.1 Displaying [Action Result] Window Results

If an object manipulation request is made through a dialog box and the user program is executed but the display is not updated, this could be because the cyclic handler for the DX is not operating correctly.

The following is a list of causes and the measures to be taken, in such cases.

1. No timer interrupt occurs.
 - A. Timer interrupts do not occur.

Correct the timer driver so that timer interrupts will occur.
 - B. Timer interrupts do occur but are not accepted.

In the following cases, timer interrupts are not accepted.

 - a. Too many interrupts occur that have an interrupt level higher than the timer interrupt
 - b. The timer interrupt level has been masked for a long time.

For interrupts that have a level equal to or higher than the timer interrupt level, keep the masking time as short as possible.
2. The system goes down.

When the system goes down, timer interrupts may not be accepted.
Take care so that the system will not go down.

Debugging Extension User's Manual

Publication Date: Rev.1.00, August 5, 2003

Published by: Sales Strategic Planning Div.
Renesas Technology Corp.

Edited by: Technical Documentation & Information Department
Renesas Kodaira Semiconductor Co., Ltd.

Debugging Extension User's Manual



Renesas Electronics Corporation

1753, Shimonumabe, Nakahara-ku, Kawasaki-shi, Kanagawa 211-8668 Japan

REJ10B0029-0100H