

ISL8274MEVAL1Z

User's Manual: Evaluation Board

Industrial Analog and Power

ISL8274MEVAL1Z

Evaluation Board

UG156
Rev.0.00
Jan 9, 2018

1. Overview

The [ISL8274M](#) is a dual-channel, step-down DC/DC power supply module capable of delivering up to 30A per channel. With an integrated digital PWM controller, synchronous power switches, an inductor and passives, only input and output capacitors are needed to finish the design. A set of optional external resistors allows the user to easily configure the device for standard operation. For advanced configurations, a standard PMBus interface addresses tasks such as sequencing and fault management, as well as real-time full telemetry and point-of-load monitoring.

The ISL8274M uses ChargeMode™ control architecture, which responds to a transient load within a single switching cycle. Operating across an input voltage range from 4.5V to 14V, the ISL8274M offers adjustable output voltage from 0.6V to 5V.

The ISL8274MEVAL1Z evaluation board is a 4.0in x 4.5in 8-layer FR4 board with 2oz. copper on top and bottom layer and 1oz. copper in buried layers. This evaluation board comes with a placeholder for pin-strap resistors to adjust output voltage, switching frequency, input Undervoltage Lockout (UVLO) protection threshold, device PMBus address, overcurrent limit, ASCR setting, and soft start setting. More configurations can be easily programmed or changed using a PMBus compliant serial bus interface.

The ZLUSBEVAL3Z (USB to PMBus adapter) is provided with this evaluation board, which connects the evaluation board to a PC to activate the PMBus communication interface. The PMBus command set is accessed by using the [PowerNavigator™](#) evaluation software from a PC running Microsoft Windows. The ISL8274MEVAL1Z can operate in Pin-Strap mode without needing the ZLUSBEVAL3Z adapter or PMBus communication.

1.1 Key Features

- V_{IN} range of 4.5V to 14V, V_{OUT} adjustable from 0.6V to 5V. Up to 95.5% efficiency
- Programmable V_{OUT} , margining, UVP/OVP, OTP/UTP, I_{OUT} limit, soft-start/stop, sequencing, and external synchronization
- Monitor: V_{IN} , V_{OUT} , I_{OUT} , temperature, duty cycle, switching frequency, and faults
- ChargeMode control tunable with PMBus
- Mechanical switch for enable and power-good LED indicator

1.2 Specifications

This board has been configured and optimized for the following operating conditions:

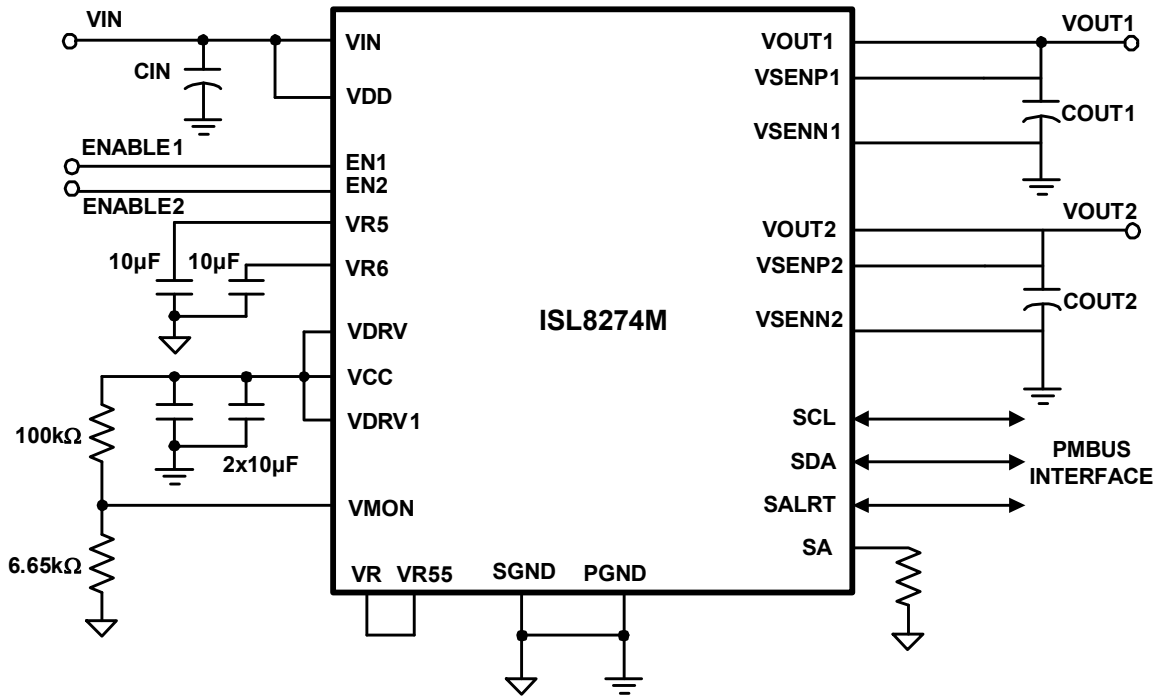
- $V_{IN} = 5V$ to 12V
- $V_{OUT} = 1.5V$
- $I_{MAX} = 30A$ per channel, $I_{OUT_avg_OCP} = 35A$ per channel
- $f_{SW} = 889kHz$
- ASCR gain = 525, ASCR residual = 90
- On/off delay = 5ms (Ch1), 5ms (Ch2), on/off ramp time = 2ms (Ch1), 5ms (Ch2)
- Input UVLO = 4.5V
- PMBus address = 0x28h

1.3 Ordering Information

Part Number	Description
ISL8274MEVAL1Z	ISL8274M evaluation board (ZLUSBEVAL3Z adapter and USB cable included)

1.4 Related Literature

- For a full list of related documents, visit our website
- [ISL8274M](#) product page



Note: This figure represents a typical implementation of the ISL8274M. For PMBus operation, it is recommended to tie the enable pin (EN) to SGND.

Figure 1. ISL8274MEVAL1Z Block Diagram

2. Functional Description

The ISL8274MEVAL1Z provides all circuitry required to evaluate the features of the ISL8274M. A majority of the features of the ISL8274M, such as compensation-free ChargeMode control, soft-start delay and ramp times, supply sequencing, and voltage margining are available on this evaluation board. For sequencing evaluation, the board can be connected to any digital module evaluation board that supports the DDC bus. [Figures 3](#) and [4](#) show the ISL8274MEVAL1Z evaluation board.

2.1 Recommended Equipment

- DC power supply with minimum 15V/40A sourcing capacity
- Electronic load capable of sinking current up to 30A per channel
- Digital Multimeters (DMMs)
- Oscilloscope with higher than 100MHz bandwidth

2.2 Quick Start Guide

2.2.1 Pin-Strap Option

The ISL8274MEVAL1Z can be configured in Pin-Strap mode with standard 1% resistors. The PMBus interface is not required to evaluate ISL8274M in Pin-Strap mode. Output voltages (V_{OUT}), switching frequency (f_{SW}), input Undervoltage Protection (UVLO) threshold, output average overcurrent threshold, tracking mode setting, ASCR setting, output delay/ramp setting and the device PMBus address can be changed by populating the recommended resistors at placeholders provided in the evaluation board.

By default, the evaluation board is programmed to regulate at the following:

- $V_{OUT} = 1.5V$
- $f_{SW} = 889kHz$
- $UVLO = 4.5V$
- $OCP = 35A$
- tracking disabled
- $ASCR_gain = 525$
- $ASCR_residual = 90$
- On/off delay = 5ms (Ch1), 5ms (Ch2)
- On/off ramp time = 2ms (Ch1), 5ms (Ch2)
- PMBus address = 28h.

Follow these steps to evaluate ISL8274M in Pin-Strap mode.

- (1) Set the ENABLE switch to “DISABLE” for both channels (SW1 and SW2).
- (2) Connect a load to the VOUT1/2 banana connectors (VOUT1/GND and VOUT2/GND).
- (3) Connect a power supply to the V_{IN} connectors (VIN/GND). Make sure the power supply is not enabled when making the connection.
- (4) Adjust the $V_{IN} = 12V$ and turn the power supply on.
- (5) Set the ENABLE switch to “ENABLE” for both channels (SW1 and SW2).
- (6) Measure 1.5V V_{OUT} at probe jumpers, VOUT1/GND (J11) and VOUT2/GND (J17).
- (7) Observe switching frequency of 889kHz at probe jumpers, PHASE1/GND (J27) and PHASE2/GND (J28). The two phases should be 180° phase shift.

- (8) To change the V_{OUT} , disconnect the board from the setup and populate with a 1% standard 0603 resistor at the RVSET1/2 placeholder location on bottom layer. Refer to the “Output Voltage Resistor Settings” table in the ISL8274M datasheet for recommended values. By default, VOUT_MAX is set 110% of V_{OUT} set by the pin-strap resistor.
- (9) To change the compensation, disconnect the board from the setup and populate with a 1% standard 0603 resistor at the R14/15 placeholder location on the bottom layer. Refer to the “ASCR Resistor Setting” table in the ISL8274M datasheet for recommended values.
- (10) To change the soft-start/stop and tracking setting, disconnect the board from the set up and populate with a 1% standard 0603 resistor at the R6 placeholder location on the bottom layer. Refer to the “Soft-Start/Stop and Tracking Resistor Settings” table in the ISL8274M datasheet for recommended values.
- (11) To change the switching frequency and the OCP limit, disconnect the board from the set up and populate with a 1% standard 0603 resistor at RFSET placeholder location on the bottom layer. Refer to the “Switching Frequency and OCP Limit Resistor Setting” table in the ISL8274M datasheet for recommended values.
- (12) To change the input UVLO and address, disconnect the board from the set up and populate with a 1% standard 0603 resistor at the R4 placeholder location on the bottom layer. Refer to the “SMBus Address and UVLO Resistor Setting” table in the ISL8274M datasheet for recommended values.

2.2.2 PMBus Option

The ISL8274MEVAL1Z can be evaluated for all features using the provided ZLUSBEVAL3Z dongle and PowerNavigator evaluation software. Follow these steps to evaluate the ISL8274M with the PMBus option.

- (1) Install the PowerNavigator software.
- (2) Set the ENABLE switch to “DISABLE” for both channels (SW1 and SW2).
- (3) Connect a load to the VOUT1/2 banana connectors (VOUT1/GND and VOUT2/GND).
- (4) Connect a power supply to the V_{IN} connectors (VIN/GND). Make sure the power supply is not enabled when making the connection.
- (5) Adjust the $V_{IN} = 12V$ and turn the power supply on.
- (6) Connect the ZLUSBEVAL3Z dongle (USB to PMBus adapter) to ISL8274MEVAL1Z board to the 6-pin male connector labeled as “PMBus DONGLE IN”.
- (7) Connect the supplied USB cable from the computer through USB to the ZLUSBEVAL3Z dongle.
- (8) Launch the PowerNavigator software.
- (9) It is optional to load a predefined setup from a configuration file using the PowerNavigator software. The ISL8274M device on the board operates in Pin-Strap mode from factory default, but the user can modify the operating parameters through the evaluation software or by loading a predefined setup from a configuration file. A sample [“Configuration File” on page 19](#) is provided and can be copied to a text editor to make desired changes. The default pin-strap configurations will be overwritten if a user-defined configuration file is loaded.
- (10) Set the ENABLE switch to “ENABLE” for both channels (SW1 and SW2). Alternatively, the PMBus ON_OFF_CONFIG and OPERATION commands can be used from the PowerNavigator software to allow PMBus Enable.
- (11) Monitor and configure the ISL8274MEVAL1Z board using the PMBus commands in the evaluation software. To store the configuration changes, disable the module and use the command STORE_USER_ALL. To restore factory default settings, disable the module and use the command RESTORE_FACTORY and STORE_USER_ALL.
- (12) PowerNavigator tutorial videos are available on our [website](#).
- (13) For sequencing using a Digital-DC™ (DDC) Bus or to evaluate multiple digital power products using a single ZLUSBEVAL3Z dongle, the ISL8274M can be daisy chained with other digital power evaluation boards. The PMBus address can be changed by placing a 1% standard 0603 resistor at the R4 placeholder location on the bottom layer. Refer to the “SMBus Address and UVLO Resistor Setting” table in the ISL8274M datasheet for recommended values.

3. Evaluation Board Information

If the input voltage is less than 5.3V, tie the V_{CC} test point directly to VIN or to a separate 5V power supply for best efficiency. If an external synchronization is used, connect the SYNC test point to the external clock. Note that the external clock signal should be active before the module is enabled.

3.1 V_{OUT} Transient Response Check

The ISL8274MEVAL1Z board has a built-in transient load test circuit (see the schematic in [Figure 2](#)). A 100A N-Channel MOSFET (Manufacturer PN: BSC010NE2LSI) is connected across V_{OUT} and PGND. A 10m Ω current-sense resistor R54/R68 is used for monitoring the drain-to-source current of the MOSFET. For a transient load test, inject the gate drive pulse signal at J33/J34. The load current can be monitored through J31/J32. Because the MOSFET will operate in the saturation region instead of the linear region when the gate turn-on signal is applied, the pulse width and duty cycle of the gate signal must be limited small enough to avoid MOSFET overheating (recommended duty cycle should be less than 2%). The amplitude of the gate driver pulse voltage can be adjusted to obtain a desired transient load current step size.

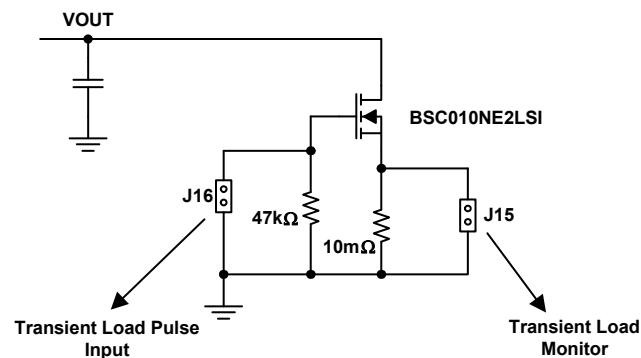


Figure 2. Schematic for Transient Load Measurement

3.2 Thermal Considerations and Current Derating

Board layout is very critical to make the module operate safely and deliver maximum allowable power. To work in the high temperature environments and carry large currents, the board layout needs to be carefully designed to maximize thermal performance. To achieve this, select enough trace width, copper weight, and the proper connectors. The ISL8274MEVAL1Z evaluation board is designed for running 30A per channel at room temperature without additional cooling systems needed. However, if the output voltage is increased or the board is operated at elevated temperatures, then the available current is derated. Refer to the derated current curves in the ISL8274M datasheet to determine the maximum output current the evaluation board can supply. θ_{JA} is measured by inserting a thermocouple inside the module to measure peak junction temperature.

4. PCB Layout Guidelines

To achieve stable operation, low losses, and good thermal performance, some layout considerations are necessary.

- Establish separate SGND plane and PGND planes, then connect SGND to PGND plane on a middle layer and underneath PAD6 with a single point connection. For SGND and PGND pin connections, such as small pins H16, J16, M5, and M17, use multiple vias for each pin to connect to inner SGND or PGND layers.
- Place enough ceramic capacitors between VIN and PGND, VOUT and PGND, and bypass capacitors between VDD, VDRV and the ground plane, as close to the module as possible to minimize high frequency noise. It is very critical to place the output ceramic capacitors close to the VOUT pads and in the direction of the load current path to create a low impedance path for the high frequency inductor ripple current.
- Use large copper areas for power path (VIN, PGND, VOUT) to minimize conduction loss and thermal stress. Also, use multiple vias to connect the power planes in different layers. It is recommended to enlarge PAD11 and 9 to also place more vias on them. The ceramic capacitors CIN can be placed on the bottom layer under these two pads.
- Connect remote sensing traces to the regulation point to achieve a tight output voltage regulation and place the two traces in parallel. Route a trace from VSEN1/2N and VSEN1/2P to the point of load where the tight output voltage is desired. Avoid routing any sensitive signal traces, such as the VSENN, VSENP sensing lines near the SW pins.
- PAD14 and 16 (SW1 and SW2) are noisy pads, but they are beneficial for thermal dissipation. If the noise issue is critical for the applications, it is recommended to use only the top layer for the SW pads. For better thermal performance, use multiple vias on these pads to connect into the SW inner and bottom layers. However, caution must be taken when placing a limited area of SW planes in any layer. The SW planes should avoid the sensing signals and should be surrounded by the PGND layer to avoid the noise coupling.
- For pins SWD1 (L3) and SWD2 (P10), it is recommended to connect to the related SW1 and SW2 pads with short loop traces. The trace width should be more than 20 mils.

4.1 Board Pictures

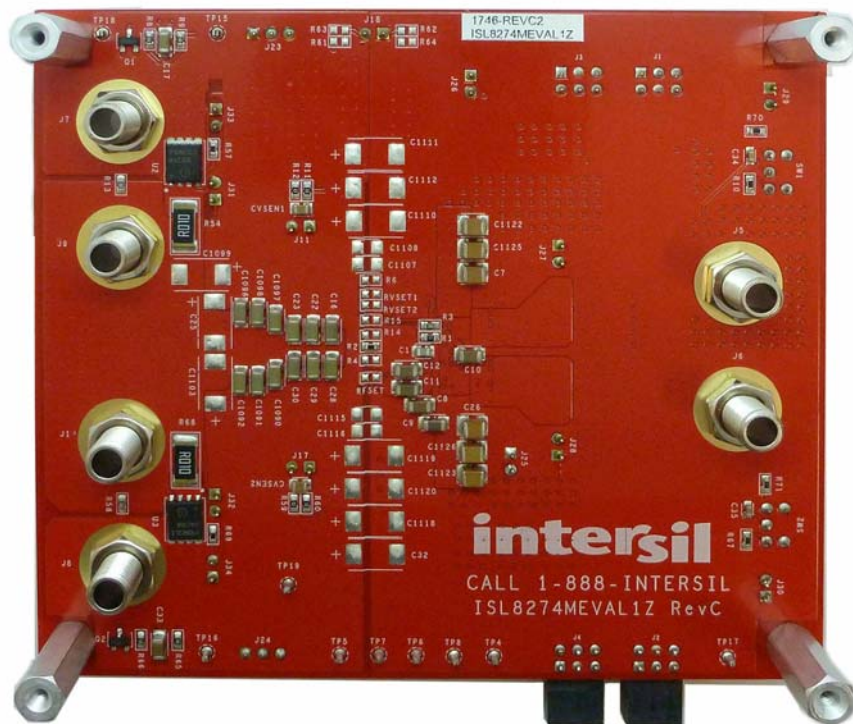


Figure 3. Bottom of Board

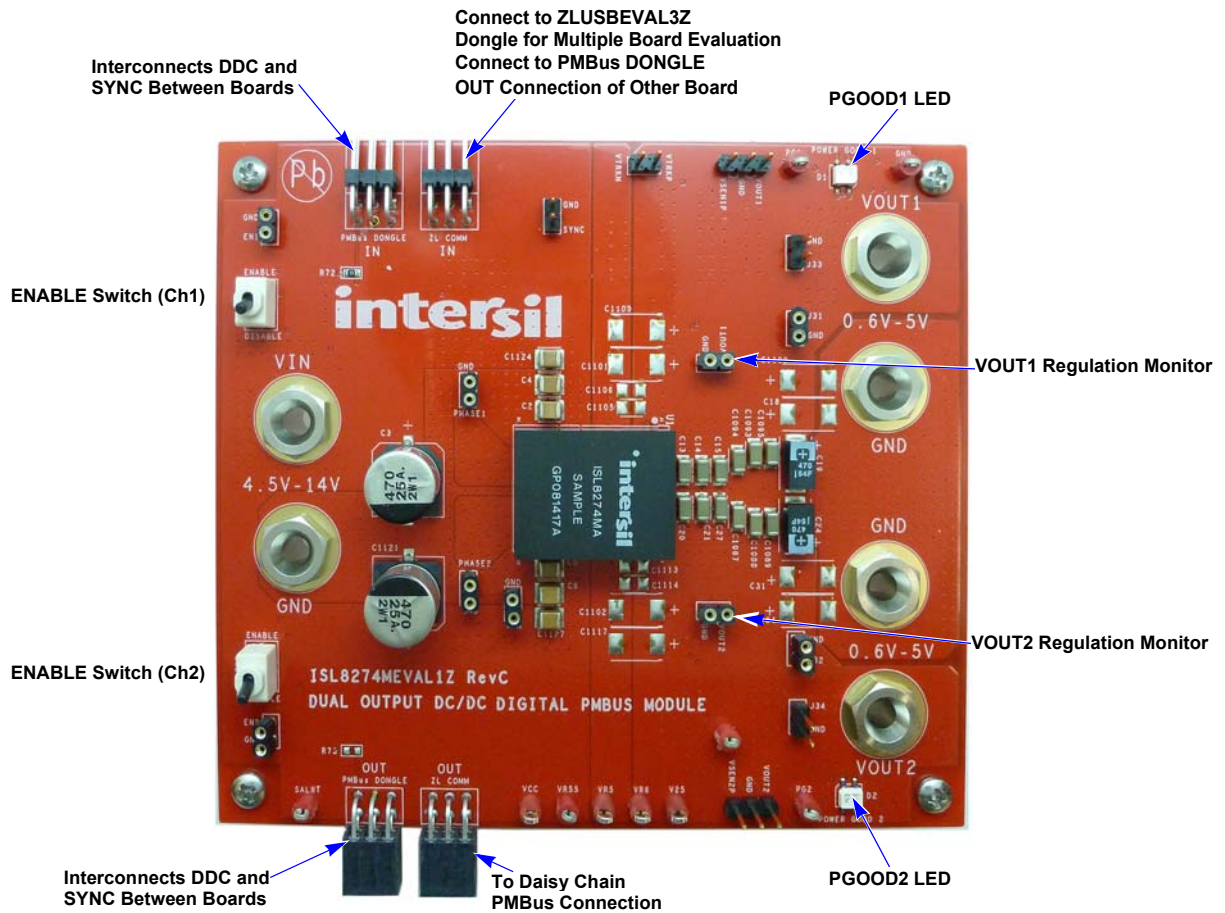


Figure 4. Top of Board

4.2 ISL8274MEVAL1Z Schematic

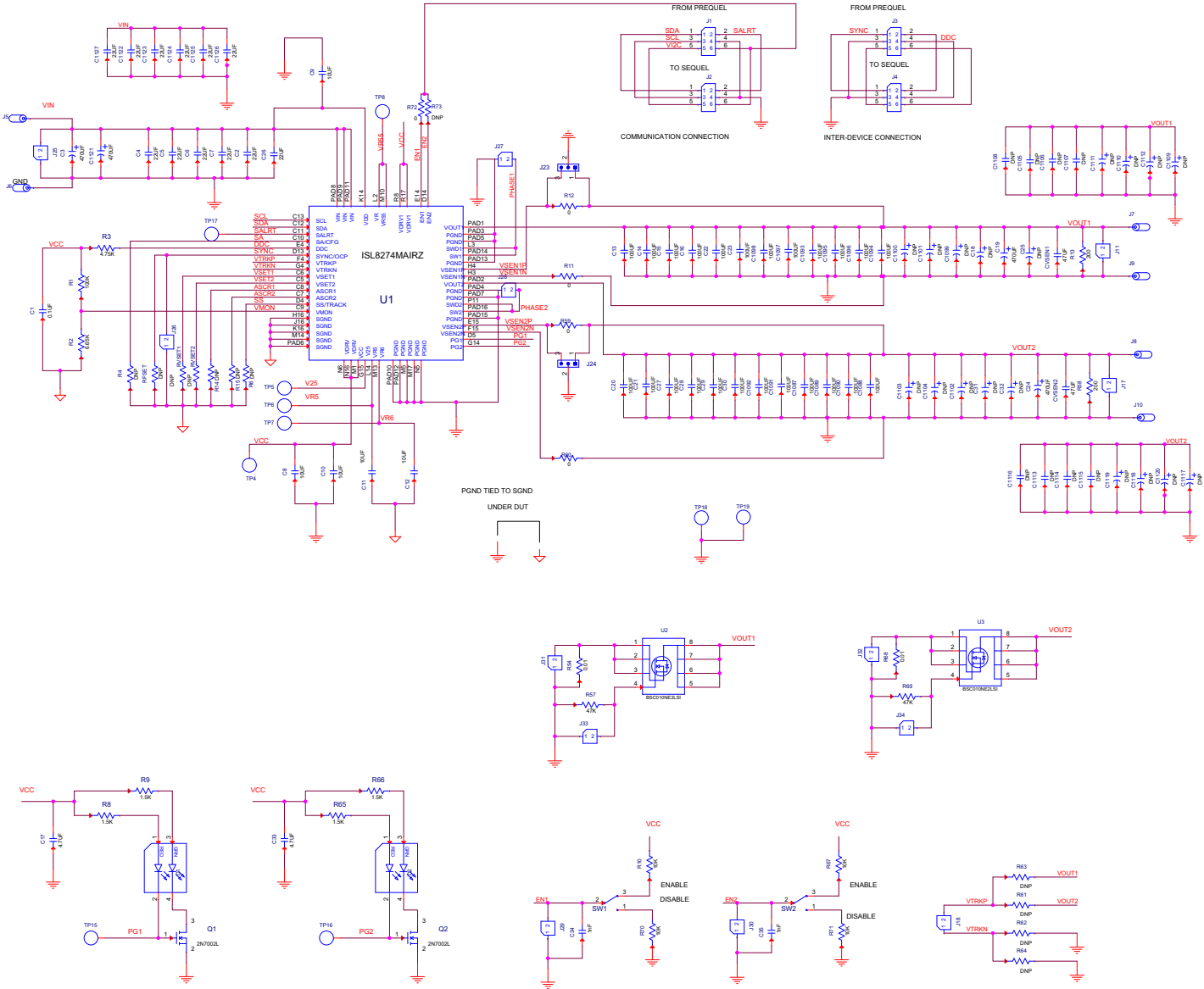


Figure 5. Schematic

4.3 Bill of Materials

Reference Designators	Qty	Manufacturer	Manufacturer Part	Description
CVSEN1, CVSEN2	2	Murata	GRM21BR61A476ME15L	CAP CER 47 μ F 10V X5R 0805, RoHS
C1	1	Murata	GRM21BR71E104KA01L	CAP CER 0.1 μ F 25V X7R 0805, RoHS
C2, C4-C7, C26, C1122-C1127	12	Murata	GRM32ER71E226KE15L	CAP, SMD 22 μ F 25volts X7R 10% 1210, RoHS
C3, C1121	2	Panasonic	EEE1EA471P	Aluminum Electrolytic Capacitors - SMD 470 μ F 25V, RoHS
C8, C10-C12	4	Murata	GRM31CR71A106KA01L	CAP, SMD 10 μ F 10volts X7R 10% 1206, RoHS
C9	1	Murata	GRM31CR71E106KA12L	CAP CER 10 μ F 25V X7R 1206, RoHS
C13-C16, C20-C23, C27-C30, C1087-C1098	24	Murata	GRM31CD80J107ME39L	CAP, SMD 100 μ F 6.3Volts X6T 20% 1206, RoHS
C18, C25, C31, C32, C1099-C1120	DNP			
C17, C33	2	Murata	GRM31CR71A475KA01L	CAP CER 4.7 μ F 10V X7R 1206, RoHS
C19, C24	2	Panasonic	6TPF470MAH	CAP TANT POLY 470 μ F 6.3V 2917, RoHS
C34, C35	2	Murata	GRM188R71H102KA01D	CAP CER 1000PF 50V X7R 0603, RoHS
D1, D2	2	Lumex Opto	SSL-LXA3025IGC	Green, Red LED Indication - Discrete 2.2V Green, 2V Red 4-SMD, RoHS
J1, J3	2	Samtec	TSW-103-08-T-D-RA	6 Positions Header, Unshrouded Connector 0.100" (2.54mm) Through Hole, Right Angle Tin, RoHS
J2, J4	2	Samtec	SSQ-103-02-T-D-RA	6 Position Receptacle Connector 0.100" (2.54mm) Through Hole, Right Angle Tin, RoHS
J5-J10	6	Clinch Connectivity	108-0740-001	Banana Jack Connector Standard Banana Threaded, External (Nut), RoHS
J11, J17, J25, J27-J32	9	Mill-Max	310-93-164-41-001000	2 Positions Receptacle Socket, Unshrouded Connector 0.100" (2.54mm) Through Hole Gold, RoHS
J18, J26, J33, J34	4	Amphenol	77311-118-02LF	2 Positions Header, Unshrouded Connector 0.100" (2.54mm) Through Hole Gold, RoHS
J23, J24	2	Amphenol	68000-103HLF	3 Positions Header, Unshrouded Connector 0.100" (2.54mm) Through Hole Gold, RoHS
Q1, Q2	2	ON Semi	2N7002LT1G	MOSFET N-CH 60V 0.115A SOT-23, RoHS
R1	1	Yageo	RC0603FR-07100KL	RES SMD 100k Ω 1% 1/10W 0603, RoHS
R2	1	Yageo	RC0603FR-076K65L	RES SMD 6.65k Ω 1% 1/10W 0603, RoHS
R3	1	Yageo	RC0603FR-074K75L	RES SMD 4.75k Ω 1% 1/10W 0603, RoHS
R4, R6, R14, R15, R61-R64, R73, RFSET, RVSET1, RVSET2	DNP			
R8, R9, R65, R66	4	Yageo	RC0603FR-071K5L	RES SMD 1.5k Ω 1% 1/10W 0603, RoHS
R10, R67, R70, R71	4	Yageo	RC0603FR-0710KL	RES SMD 10k Ω 1% 1/10W 0603, RoHS

Reference Designators	Qty	Manufacturer	Manufacturer Part	Description
R11, R12, R59, R60, R72	5	Yageo	RC0603JR-070RL	RES SMD 0.0Ω 1/10W 0603, RoHS
R13, R58	2	Yageo	RC0603FR-07200RL	RES SMD 200Ω 1% 1/10W 0603, RoHS
R54, R68	2	Vishay	WSL2512R0100FEA	RES SMD 0.01Ω 1% 1W 2512, RoHS
R57, R69	2	Yageo	RC0603FR-0747KL	RES SMD 47kΩ 1% 1/10W 0603, RoHS
SW1, SW2	2	C&K	GT13MCBE	Switch Toggle SPDT 0.4VA 20V, RoHS
TP4-TP8, TP15-TP19	10	Keystone	5005	Red PC Test Point, Compact Phosphor Bronze, Silver Plating 0.063" (1.60mm) Hole Diameter Mounting Type, RoHS
U1	1	Intersil	ISL8274MAIRZ	Digital 25A/25A dual channel DC/DC step down power supply module, HAD, RoHS
U2, U3	2	Infineon	BSC010NE2LSI	MOSFET N-CH 25V 38A TDSO8-8, RoHS

4.4 Layout

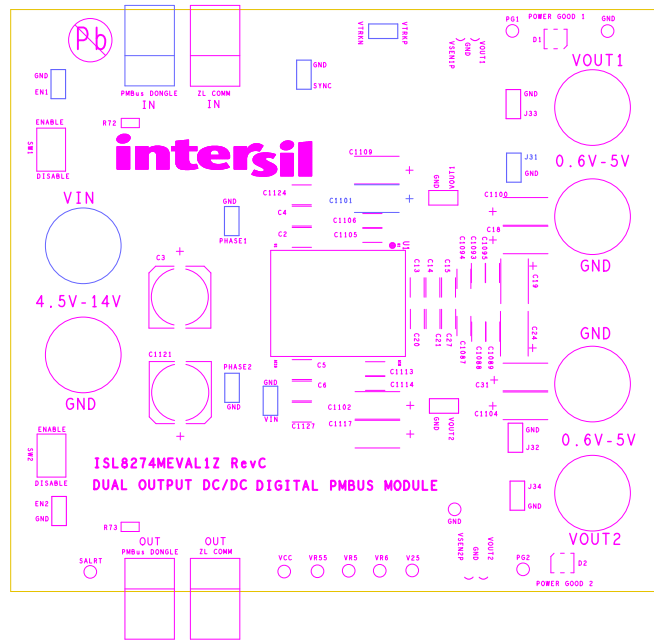


Figure 6. Silkscreen Top

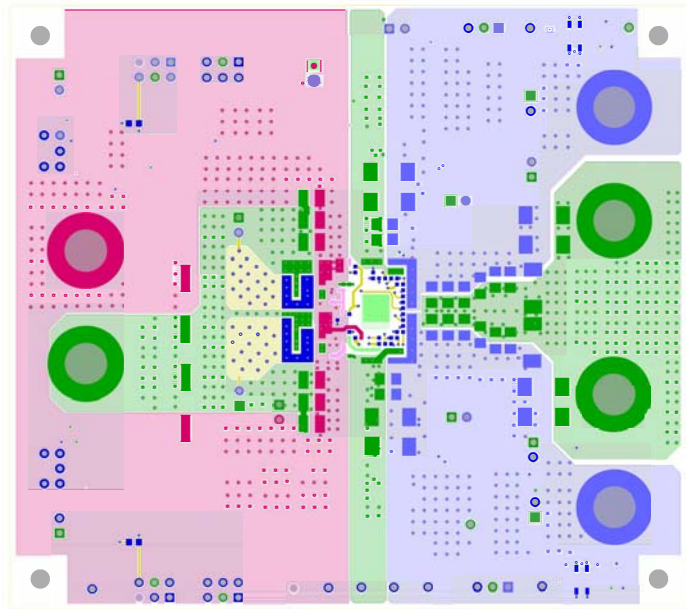


Figure 7. Top Layer

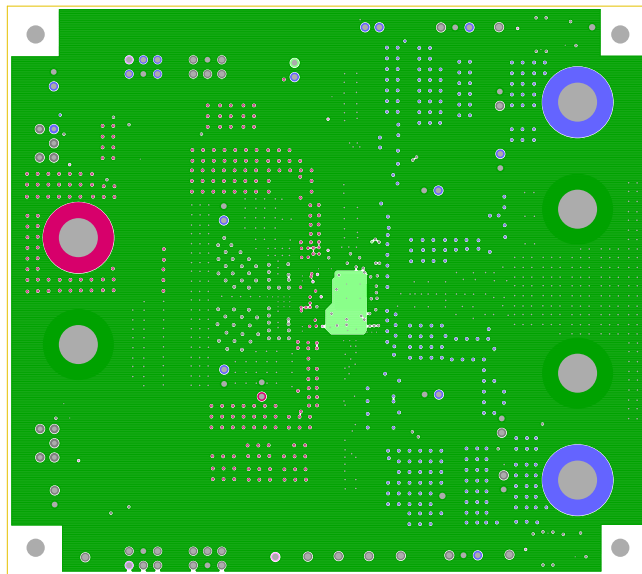


Figure 8. Layer 2

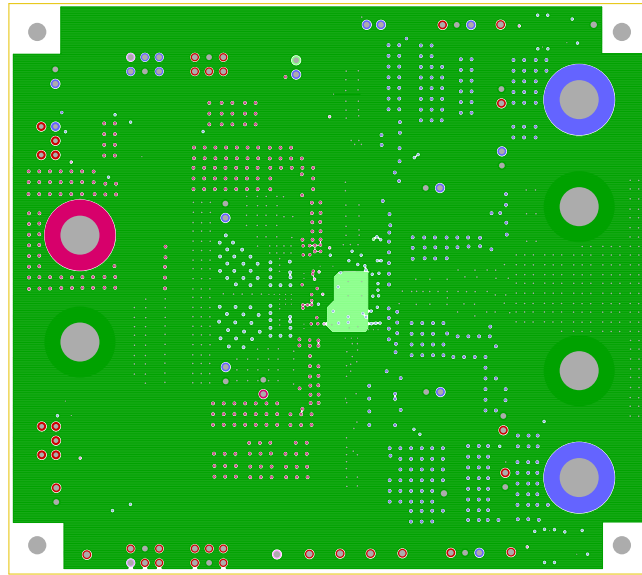


Figure 9. Layer 3

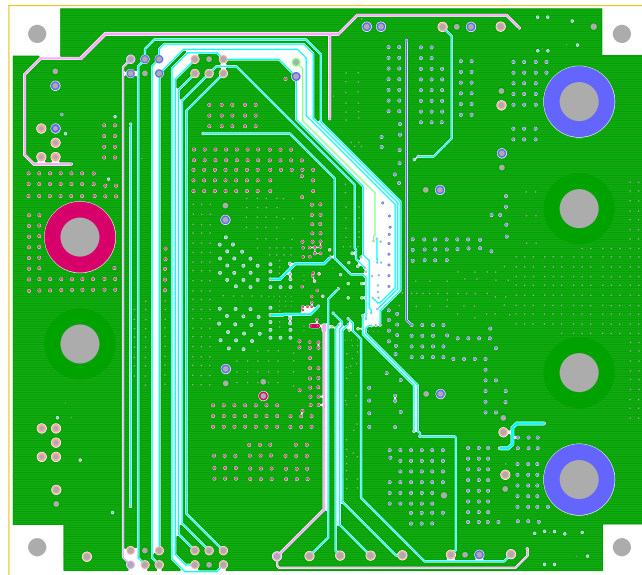


Figure 10. Layer 4

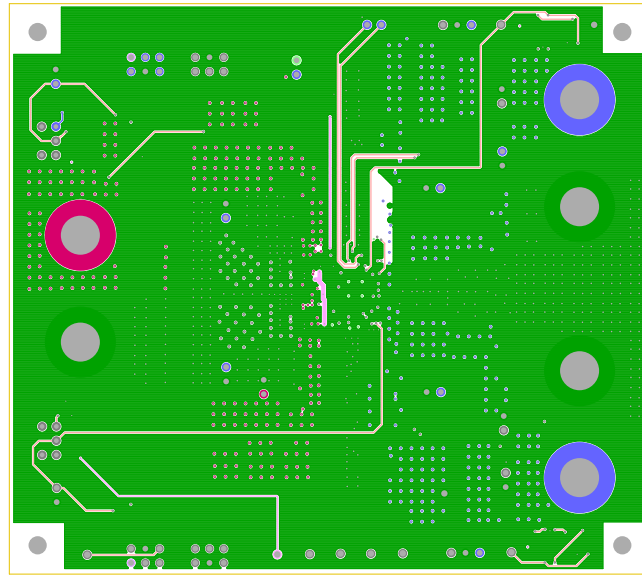


Figure 11. Layer 5

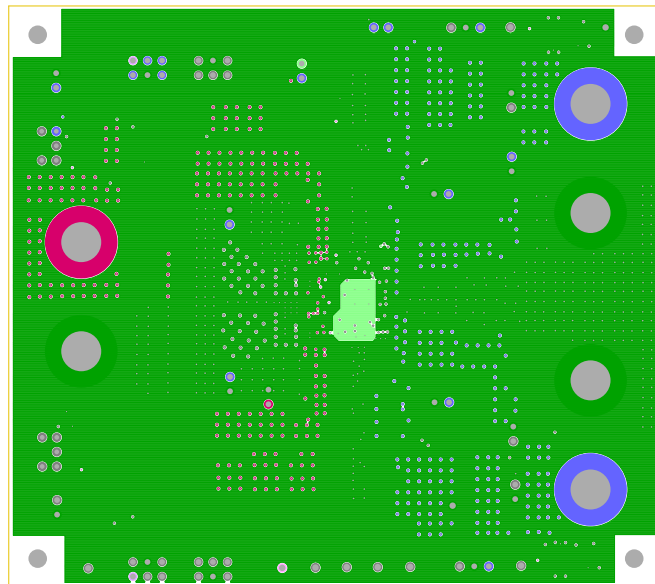


Figure 12. Layer 6

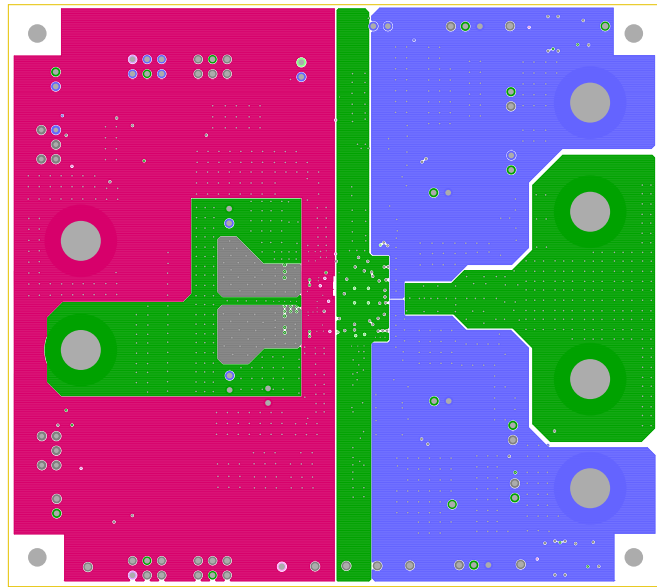


Figure 13. Layer 7

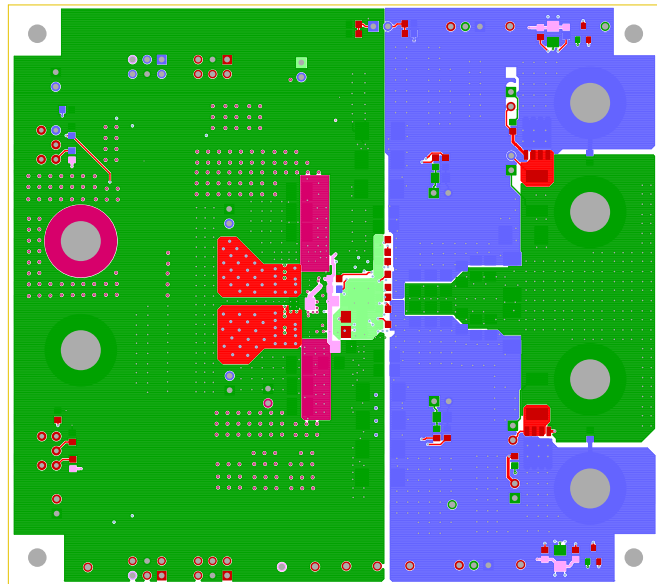


Figure 14. Bottom Layer

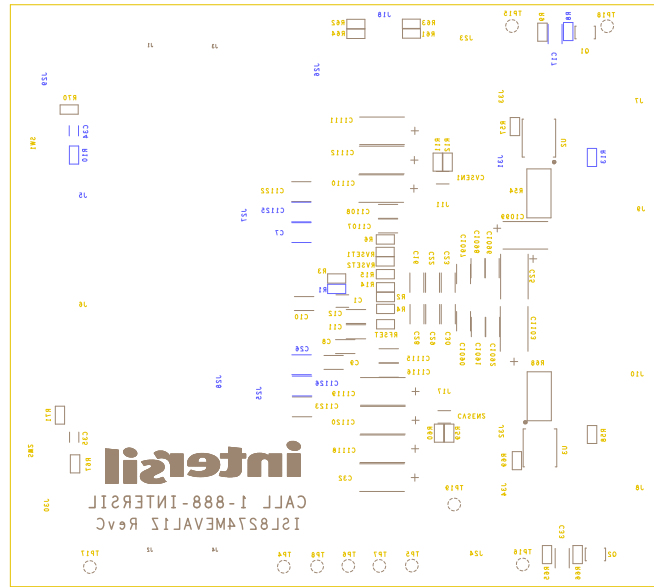


Figure 15. Silkscreen Bottom

5. Typical Performance Data

The following data was acquired using an ISL8274MEVAL1Z evaluation board. For test conditions, refer to the “ISL8274M Design Guide Matrix and Output Voltage Response” table in the ISL8274M datasheet.

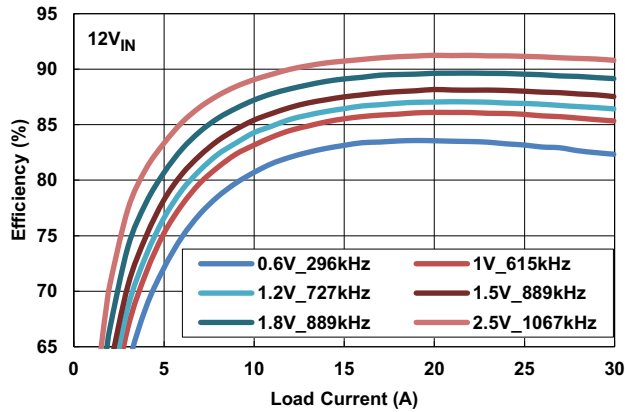


Figure 16. Single Channel Efficiency vs Output Current

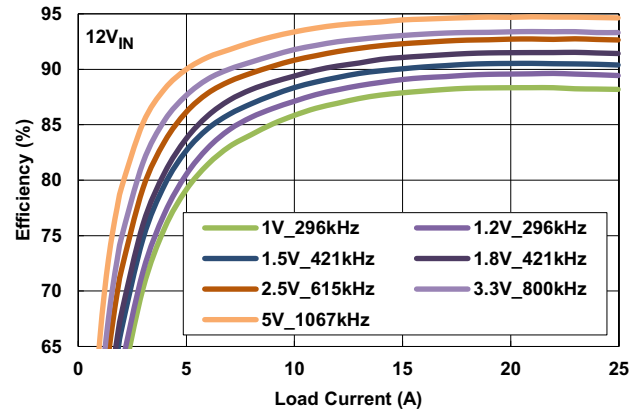


Figure 17. Single Channel Efficiency vs Output Current

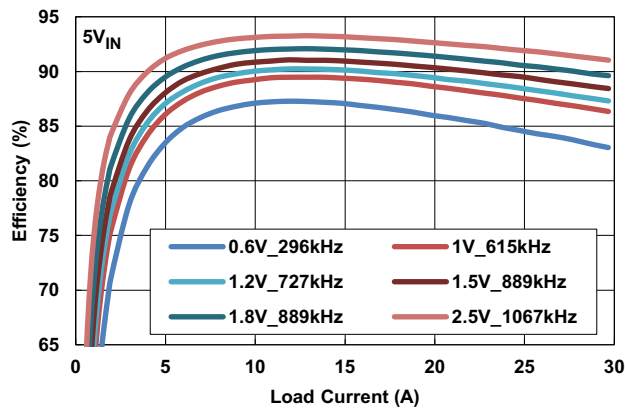


Figure 18. Single Channel Efficiency vs Output Current

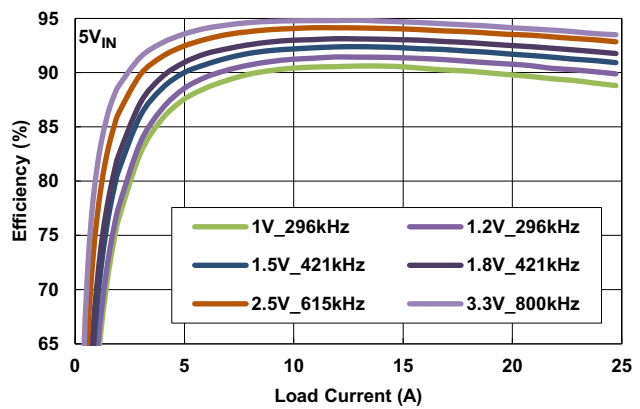


Figure 19. Single Channel Efficiency vs Output Current

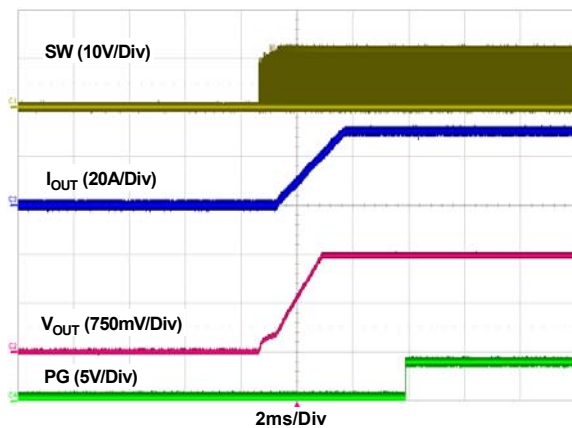


Figure 20. Single Channel Startup 12V_{IN}, 1.5V_{OUT}, 30A

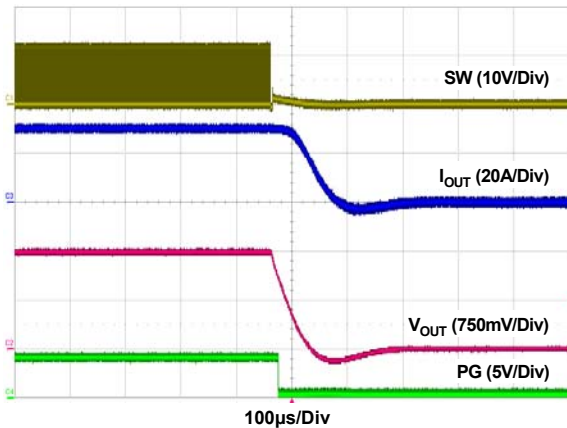


Figure 21. Single Channel Shutdown 12V_{IN}, 1.5V_{OUT}, 30A

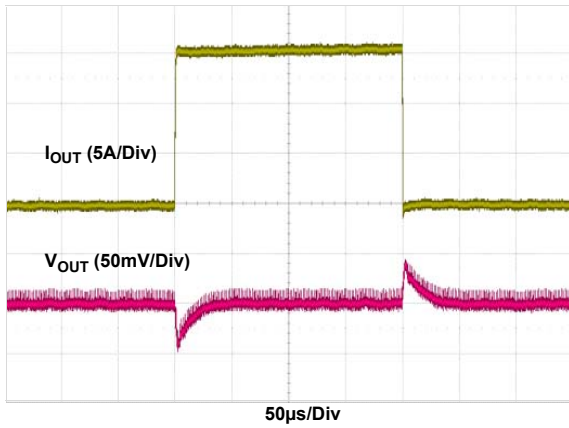


Figure 22. 0A-15A, $>10\text{A}/\mu\text{s}$, 12V_{IN} , 1V_{OUT} , 615kHz

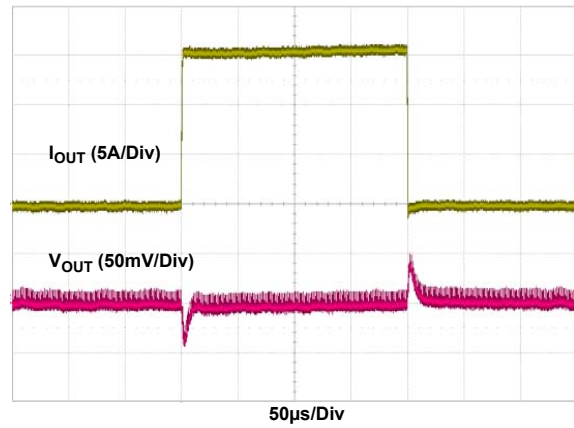


Figure 23. 0A-15A, $>10\text{A}/\mu\text{s}$, 12V_{IN} , 1.5V_{OUT} , 889kHz

6. Configuration File

Sample Configuration File for ISL8274M Module. Copy and paste (from RESTORE_FACTORY TO ### End User Store) to a text editor and save it as Confile_file_name.txt. The # symbol is used for comment lines. The following settings are already loaded to ISL8274M module as factory defaults.

```

RESTORE_FACTORY
STORE_USER_ALL
### Begin User Store
RESTORE_USER_ALL
PAGE                                0x00
FREQUENCY_SWITCH                    0x0379                # 889 kHz
OT_FAULT_LIMIT                      0xEB98                # 115 °C
OT_FAULT_RESPONSE                   0x80
OT_WARN_LIMIT                       0xEB48                # 105 °C
UT_WARN_LIMIT                      0xDC40                # -30 °C
UT_FAULT_LIMIT                      0xE530                # -45 °C
UT_FAULT_RESPONSE                   0x80
VIN_OV_FAULT_LIMIT                  0xD3A0                # 14.5 V
VIN_OV_FAULT_RESPONSE               0x80
VIN_OV_WARN_LIMIT                   0xD353                # 13.297 V
VIN_UV_WARN_LIMIT                   0xCA51                # 4.633 V
VIN_UV_FAULT_LIMIT                  0xCA40                # 4.5 V
VIN_UV_FAULT_RESPONSE               0x80
MFR_ID
MFR_MODEL
MFR_REVISION
MFR_LOCATION
MFR_DATE
MFR_SERIAL
LEGACY_FAULT_GROUP                  0x00000000
USER_DATA_00
SYNC_CONFIG                          0x00
ON_OFF_CONFIG                       0x17
VOUT_COMMAND                        0x3000                # 1.5 V
VOUT_CAL_OFFSET                     0x0000                # 0 V
VOUT_MAX                            0x34CC                # 1.65 V
VOUT_MARGIN_HIGH                    0x3266                # 1.575 V
VOUT_MARGIN_LOW                     0x2D99                # 1.425 V
VOUT_TRANSITION_RATE                0xBA00                # 1 V/ms
VOUT_DROOP                          0x0000                # 0 mV/A
INTERLEAVE                          0x0021
IOUT_CAL_GAIN                       0xB2C3                # 0.69 mV/A
IOUT_CAL_OFFSET                     0xB529                # -0.71 A
VOUT_OV_FAULT_LIMIT                 0x3733                # 1.725 V
VOUT_OV_FAULT_RESPONSE              0x80
VOUT_OV_WARN_LIMIT                  0x34CC                # 1.65 V
VOUT_UV_WARN_LIMIT                  0x2B33                # 1.35 V
VOUT_UV_FAULT_LIMIT                 0x28CC                # 1.275 V
VOUT_UV_FAULT_RESPONSE              0x80
IOUT_OC_FAULT_LIMIT                 0xE320                # 50 A
IOUT_OC_WARN_LIMIT                  0DBF0                # 31.5 A
IOUT_UC_FAULT_LIMIT                 0xE4E0                # -50 A
POWER_GOOD_ON                       0x2B33                # 1.35 V
TON_DELAY                           0xCA80                # 5 ms
TON_RISE                             0xC200                # 2 ms
TOFF_DELAY                          0xCA80                # 5 ms
TOFF_FALL                           0xC200                # 2 ms
ISENSE_CONFIG                       0x06
USER_CONFIG                         0x84
DDC_CONFIG                          0x0800
POWER_GOOD_DELAY                    0xC300                # 3 ms
TEMPCO_CONFIG                       0x27
ASCR_CONFIG                          0x015A020D

```

SEQUENCE	0x0000	
TRACK_CONFIG	0x00	
DDC_GROUP	0x00080808	
MFR_IOUT_OC_FAULT_RESPONSE	0x80	
MFR_IOUT_UC_FAULT_RESPONSE	0x80	
IOUT_AVG_OC_FAULT_LIMIT	0xE230	# 35 A
IOUT_AVG_UC_FAULT_LIMIT	0xDC40	# -30 A
PAGE	0x01	
FREQUENCY_SWITCH	0x0379	# 889 kHz
OT_FAULT_LIMIT	0xEB98	# 115 °C
OT_FAULT_RESPONSE	0x80	
OT_WARN_LIMIT	0xEB48	# 105 °C
UT_WARN_LIMIT	0xDC40	# -30 °C
UT_FAULT_LIMIT	0xE530	# -45 °C
UT_FAULT_RESPONSE	0x80	
VIN_OV_FAULT_LIMIT	0xD3A0	# 14.5 V
VIN_OV_FAULT_RESPONSE	0x80	
VIN_OV_WARN_LIMIT	0xD353	# 13.297 V
VIN_UV_WARN_LIMIT	0xCA51	# 4.633 V
VIN_UV_FAULT_LIMIT	0xCA40	# 4.5 V
VIN_UV_FAULT_RESPONSE	0x80	
MFR_ID		
MFR_MODEL		
MFR_REVISION		
MFR_LOCATION		
MFR_DATE		
MFR_SERIAL		
LEGACY_FAULT_GROUP	0x00000000	
USER_DATA_00		
SYNC_CONFIG	0x00	
ON_OFF_CONFIG	0x17	
VOUT_COMMAND	0x3000	# 1.5 V
VOUT_CAL_OFFSET	0x0000	# 0 V
VOUT_MAX	0x34CC	# 1.65 V
VOUT_MARGIN_HIGH	0x3266	# 1.575 V
VOUT_MARGIN_LOW	0x2D99	# 1.425 V
VOUT_TRANSITION_RATE	0xBA00	# 1 V/ms
VOUT_DROOP	0x0000	# 0 mV/A
INTERLEAVE	0x0022	
IOUT_CAL_GAIN	0xB2D7	# 0.71 mV/A
IOUT_CAL_OFFSET	0xBDDC	# -1.07 A
VOUT_OV_FAULT_LIMIT	0x3733	# 1.725 V
VOUT_OV_FAULT_RESPONSE	0x80	
VOUT_OV_WARN_LIMIT	0x34CC	# 1.65 V
VOUT_UV_WARN_LIMIT	0x2B33	# 1.35 V
VOUT_UV_FAULT_LIMIT	0x28CC	# 1.275 V
VOUT_UV_FAULT_RESPONSE	0x80	
IOUT_OC_FAULT_LIMIT	0xE320	# 50 A
IOUT_OC_WARN_LIMIT	0xDBF0	# 31.5 A
IOUT_UC_FAULT_LIMIT	0xE4E0	# -50 A
POWER_GOOD_ON	0x2B33	# 1.35 V
TON_DELAY	0xCA80	# 5 ms
TON_RISE	0xCA80	# 5 ms
TOFF_DELAY	0xCA80	# 5 ms
TOFF_FALL	0xCA80	# 5 ms
ISENSE_CONFIG	0x06	
USER_CONFIG	0x84	
DDC_CONFIG	0x0900	
POWER_GOOD_DELAY	0xC300	# 3 ms
TEMPCO_CONFIG	0x27	
ASCR_CONFIG	0x015A020D	
SEQUENCE	0x0000	
TRACK_CONFIG	0x00	
DDC_GROUP	0x00080808	

MFR_IOUT_OC_FAULT_RESPONSE	0x80	
MFR_IOUT_UC_FAULT_RESPONSE	0x80	
IOUT_AVG_OC_FAULT_LIMIT	0xE230	# 35 A
IOUT_AVG_UC_FAULT_LIMIT	0xDC40	# -30 A
STORE_USER_ALL		
### End User Store		

7. Revision History

Rev.	Date	Description
0.00	Jan 9, 2018	Initial release

Notice

1. Descriptions of circuits, software and other related information in this document are provided only to illustrate the operation of semiconductor products and application examples. You are fully responsible for the incorporation or any other use of the circuits, software, and information in the design of your product or system. Renesas Electronics disclaims any and all liability for any losses and damages incurred by you or third parties arising from the use of these circuits, software, or information.
2. Renesas Electronics hereby expressly disclaims any warranties against and liability for infringement or any other claims involving patents, copyrights, or other intellectual property rights of third parties, by or arising from the use of Renesas Electronics products or technical information described in this document, including but not limited to, the product data, drawings, charts, programs, algorithms, and application examples.
3. No license, express, implied or otherwise, is granted hereby under any patents, copyrights or other intellectual property rights of Renesas Electronics or others.
4. You shall not alter, modify, copy, or reverse engineer any Renesas Electronics product, whether in whole or in part. Renesas Electronics disclaims any and all liability for any losses or damages incurred by you or third parties arising from such alteration, modification, copying or reverse engineering.
5. Renesas Electronics products are classified according to the following two quality grades: "Standard" and "High Quality". The intended applications for each Renesas Electronics product depends on the product's quality grade, as indicated below.
"Standard": Computers; office equipment; communications equipment; test and measurement equipment; audio and visual equipment; home electronic appliances; machine tools; personal electronic equipment; industrial robots; etc.
"High Quality": Transportation equipment (automobiles, trains, ships, etc.); traffic control (traffic lights); large-scale communication equipment; key financial terminal systems; safety control equipment; etc.
Unless expressly designated as a high reliability product or a product for harsh environments in a Renesas Electronics data sheet or other Renesas Electronics document, Renesas Electronics products are not intended or authorized for use in products or systems that may pose a direct threat to human life or bodily injury (artificial life support devices or systems; surgical implantations; etc.), or may cause serious property damage (space system; undersea repeaters; nuclear power control systems; aircraft control systems; key plant systems; military equipment; etc.). Renesas Electronics disclaims any and all liability for any damages or losses incurred by you or any third parties arising from the use of any Renesas Electronics product that is inconsistent with any Renesas Electronics data sheet, user's manual or other Renesas Electronics document.
6. When using Renesas Electronics products, refer to the latest product information (data sheets, user's manuals, application notes, "General Notes for Handling and Using Semiconductor Devices" in the reliability handbook, etc.), and ensure that usage conditions are within the ranges specified by Renesas Electronics with respect to maximum ratings, operating power supply voltage range, heat dissipation characteristics, installation, etc. Renesas Electronics disclaims any and all liability for any malfunctions, failure or accident arising out of the use of Renesas Electronics products outside of such specified ranges.
7. Although Renesas Electronics endeavors to improve the quality and reliability of Renesas Electronics products, semiconductor products have specific characteristics, such as the occurrence of failure at a certain rate and malfunctions under certain use conditions. Unless designated as a high reliability product or a product for harsh environments in a Renesas Electronics data sheet or other Renesas Electronics document, Renesas Electronics products are not subject to radiation resistance design. You are responsible for implementing safety measures to guard against the possibility of bodily injury, injury or damage caused by fire, and/or danger to the public in the event of a failure or malfunction of Renesas Electronics products, such as safety design for hardware and software, including but not limited to redundancy, fire control and malfunction prevention, appropriate treatment for aging degradation or any other appropriate measures. Because the evaluation of microcomputer software alone is very difficult and impractical, you are responsible for evaluating the safety of the final products or systems manufactured by you.
8. Please contact a Renesas Electronics sales office for details as to environmental matters such as the environmental compatibility of each Renesas Electronics product. You are responsible for carefully and sufficiently investigating applicable laws and regulations that regulate the inclusion or use of controlled substances, including without limitation, the EU RoHS Directive, and using Renesas Electronics products in compliance with all these applicable laws and regulations. Renesas Electronics disclaims any and all liability for damages or losses occurring as a result of your noncompliance with applicable laws and regulations.
9. Renesas Electronics products and technologies shall not be used for or incorporated into any products or systems whose manufacture, use, or sale is prohibited under any applicable domestic or foreign laws or regulations. You shall comply with any applicable export control laws and regulations promulgated and administered by the governments of any countries asserting jurisdiction over the parties or transactions.
10. It is the responsibility of the buyer or distributor of Renesas Electronics products, or any other party who distributes, disposes of, or otherwise sells or transfers the product to a third party, to notify such third party in advance of the contents and conditions set forth in this document.
11. This document shall not be reprinted, reproduced or duplicated in any form, in whole or in part, without prior written consent of Renesas Electronics.
12. Please contact a Renesas Electronics sales office if you have any questions regarding the information contained in this document or Renesas Electronics products.
(Note 1) "Renesas Electronics" as used in this document means Renesas Electronics Corporation and also includes its directly or indirectly controlled subsidiaries.
(Note 2) "Renesas Electronics product(s)" means any product developed or manufactured by or for Renesas Electronics.

(Rev.4.0-1 November 2017)



SALES OFFICES

Renesas Electronics Corporation

<http://www.renesas.com>

Refer to "<http://www.renesas.com/>" for the latest and detailed information.

Renesas Electronics America Inc.
1001 Murphy Ranch Road, Milpitas, CA 95035, U.S.A.
Tel: +1-408-432-8888, Fax: +1-408-434-5351

Renesas Electronics Canada Limited
9251 Yonge Street, Suite 8309 Richmond Hill, Ontario Canada L4C 9T3
Tel: +1-905-237-2004

Renesas Electronics Europe Limited
Dukes Meadow, Millboard Road, Bourne End, Buckinghamshire, SL8 5FH, U.K
Tel: +44-1628-651-700, Fax: +44-1628-651-804

Renesas Electronics Europe GmbH
Arcadiastrasse 10, 40472 Düsseldorf, Germany
Tel: +49-211-6503-0, Fax: +49-211-6503-1327

Renesas Electronics (China) Co., Ltd.
Room 1709 Quantum Plaza, No.27 ZhichunLu, Haidian District, Beijing, 100191 P. R. China
Tel: +86-10-8235-1155, Fax: +86-10-8235-7679

Renesas Electronics (Shanghai) Co., Ltd.
Unit 301, Tower A, Central Towers, 555 Langao Road, Putuo District, Shanghai, 200333 P. R. China
Tel: +86-21-2226-0888, Fax: +86-21-2226-0999

Renesas Electronics Hong Kong Limited
Unit 1601-1611, 16/F., Tower 2, Grand Century Place, 193 Prince Edward Road West, Mongkok, Kowloon, Hong Kong
Tel: +852-2265-6688, Fax: +852-2886-9022

Renesas Electronics Taiwan Co., Ltd.
13F, No. 363, Fu Shing North Road, Taipei 10543, Taiwan
Tel: +886-2-8175-9600, Fax: +886-2-8175-9670

Renesas Electronics Singapore Pte. Ltd.
80 Bendemeer Road, Unit #06-02 Hyflux Innovation Centre, Singapore 339949
Tel: +65-6213-0200, Fax: +65-6213-0300

Renesas Electronics Malaysia Sdn.Bhd.
Unit 1207, Block B, Menara Amcorp, Amcorp Trade Centre, No. 18, Jln Persiaran Barat, 46050 Petaling Jaya, Selangor Darul Ehsan, Malaysia
Tel: +60-3-7955-9390, Fax: +60-3-7955-9510

Renesas Electronics India Pvt. Ltd.
No.777C, 100 Feet Road, HAL 2nd Stage, Indiranagar, Bangalore 560 038, India
Tel: +91-80-67208700, Fax: +91-80-67208777

Renesas Electronics Korea Co., Ltd.
17F, KAMCO Yangjae Tower, 262, Gangnam-daero, Gangnam-gu, Seoul, 06265 Korea
Tel: +82-2-558-3737, Fax: +82-2-558-5338

ISL8274MEVAL1Z

