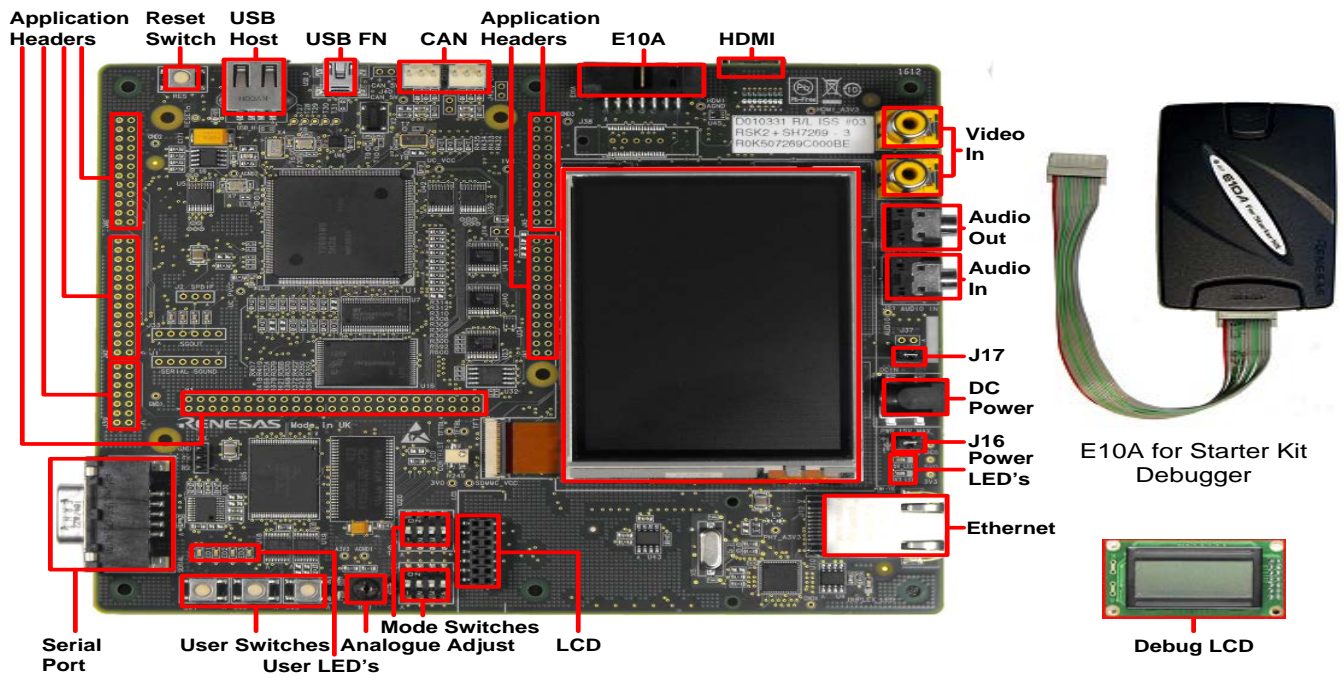


Quick Start

Renesas Starter Kit2+ for SH7269



1. Installation

Do not connect the E10A debugger module until the software support has been installed.

1. Insert the CD into your computer's CD-ROM drive. The CD should automatically run the installation program. If the installer does not start, browse to the CD root folder and double click on 'setup.exe'.
2. Windows Vista users may see "User Account Control" dialog box. If applicable, enter the administrator password and click <OK>.
3. The installer will ask you which language is to be used, please choose the appropriate one and click <OK>.
4. On the first screen of the installer proper, click <Next>.
5. The License Agreement will be shown, read and click <Yes>.
6. The next screen asks you to pick the world region – please select and click <Next>.
7. The destination folders are specified on the next screens. It is recommended to accept the default settings. Click <Next> to continue.
8. Click <Next> on all screens until the Installation process commences.
9. After the completion of successful installation, click <Finish>.

2. Connection

10. Fit the LCD module to the connector marked 'LCD' on the RSK2+. Ensure all the pins of the connector are correctly inserted in the socket.
11. Connect the E10A debugger to the connector marked 'E10A' on the RSK2+ using the ribbon cable.
12. Connect the E10A debugger to a spare USB port on your PC. The green 'ACT' LED on the E10A debugger will illuminate.
13. Ensure that the Power Jumpers (J16 & J17) are fitted.
14. Connect an external 5V power supply to the RSK2+ board at PWR connector, ensuring the polarity is correct (Centre positive).
15. The 'Found New Hardware' Wizard will appear. Please follow the steps below to install the drivers. Note that administrator privileges are required for a Windows™ 2000/XP/Vista machine.

Windows™ 2000/XP

- a. Select option 'No, not this time' in "Found New Hardware" Wizard dialog, and click <Next> button.
- b. Verify the "Recommended" option is selected and click <Next>.
- c. If using Windows XP, go to step 'e'; otherwise, click <Next>.
- d. Click <Next> to install the driver.
- e. Click <Finish> to close the wizard.

Windows Vista

- a. Select "Locate and install driver software (recommended)".
- b. "User Account Control" dialog box will appear. If applicable, enter administrator password and click <OK>.
- c. Driver installation will start. After couple of minutes a "Windows security" dialog box will appear, select "install this driver software anyway".
- d. "Device driver software installed successfully" pop-up will appear in the windows toolbar and installation will complete.

Note: The Windows driver signing dialog may be displayed. Please accept the driver to continue.

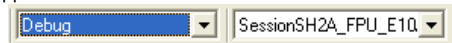
3. HEW Workspace

HEW integrates various tools such as compiler, assembler, debugger and editor into a common graphical user interface. To learn more on how to use HEW, open the HEW manual installed on your computer (Start Menu > All Programs > Renesas > High-performance Embedded Workshop > Manual Navigator)

16. Launch HEW from the Start Menu. (Start Menu > All Programs > Renesas > High-performance Embedded Workshop)
17. In the "Welcome" dialog box: Verify "Create New Workspace" is selected. Click <OK>
18. In the "New Project Workspace" dialog box: Set the "CPU Family" to "SuperH RISC Engine", and verify the "Tool chain" is set to "Renesas SuperH Standard". Select "RSK2+SH7269" from the left hand pane.
19. Enter a name for the workspace. The project name will be automatically completed with the Workspace name. You can change this name to 'Tutorial' if required. Click <OK>.
20. On the "RSK2+SH7269 – Step 1" window: Select "Tutorial" and click <Next>.
21. On the "RSK2+SH7269 – Step 2" window: Click <Finish>.
22. On the Project Generator Information window: Click <OK>.

The project that is created has two configurations. The 'Release' configuration compiles the project without any debugger support and can be used for the final release code version. The 'Debug' configuration can be used to debug the user application.

23. Select the 'Debug' build configuration in the left hand drop down list on the tool bar.

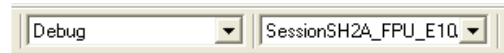


24. Click on the 'Build' icon to compile, assemble and link the project.



4. Programming and Debug

25. Ensure that 'SessionSH2A_FPU_E10A_USB_SYSTEM' session in the right hand drop down list on the tool bar is selected.
26. Please open the 'Command Line' window by choosing 'Command Line' in the 'View' menu, or by pressing ctrl +L.
27. Click the <Connect> button on the 'debug' toolbar.

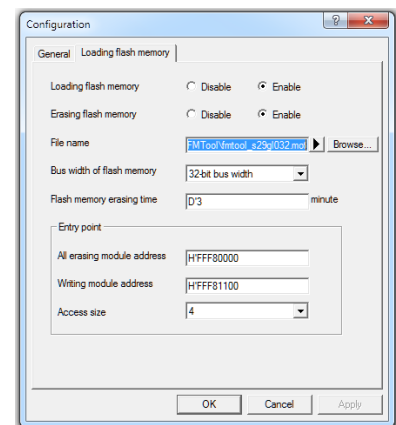
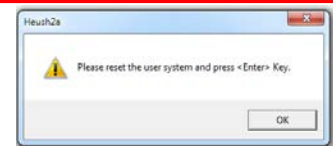
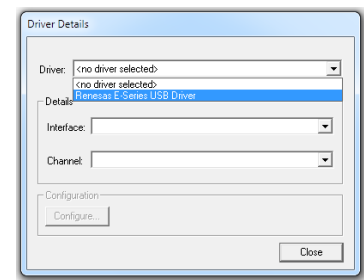



28. Ensure the DIP switch, SW5, on the RSK2+ is set to the following configuration
1: ON 2: ON 3: OFF 4: OFF
29. Ensure the DIP switch, SW4, on the RSK2+ is set to the following configuration
1: ON 2: ON 3: ON 4: OFF
30. In the "Select Emulator Mode" dialog choose "SH72691" and ensure the "E10A-USB Emulator" radio button is selected, click <OK>.
31. If this isn't the first time you have used the E10A module with this RSK2+, please skip to step 32.

First use of the E10A module

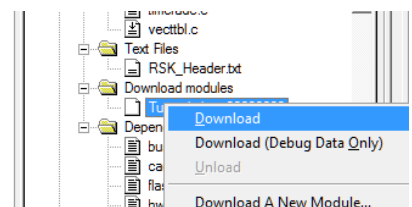
32. The 'Please choose driver' dialog will be shown. Click <OK>
33. The 'Driver Details' dialog will be shown, please select "Renesas E-Series USB Driver" as illustrated. The 'Interface' and 'Channel' items will be automatically populated. Click <Close>.
34. The Firmware setup dialog will be shown warning you not to disconnect the USB cable until the firmware download is complete. Click <OK>.
35. The firmware will be downloaded to the E10A module; this will take a few moments.

Please do not disconnect the E10A from the host during download, doing so is likely to damage the E10A module.




36. A box will appear; "Please reset the user system and press <Enter> key."
37. Press the reset (RST) switch on the board and press <Enter> (or click <OK>).
38. HEW will connect to the target system.
39. Please wait until the 'Connected' message appears in the HEW output window. The RSK board is successfully connected.
40. Click on the 'Emulator System' button in HEW. 
41. The "Configuration" dialog will appear, select the 'Loading Flash memory' tab.
42. Select the 'Enable' radio button for both 'Loading flash memory' and for 'Erasing flash memory' options.
43. Browse and select the 'fmttool_s29gl032.mot' file available in the FMTool folder present in the project directory.
44. Check the settings against the picture to the right.
45. Click <OK> on the "Configuration" dialog.

46. Right click on the <project_name>.abs file listed in the download modules area of the Workspace view and select "Download". This will erase and download code in the flash.
47. The 'Downloading program' window will show the progress of the download, once completed it will disappear.



48. Click the <Reset - Go> button. 

49. The code will run and you will see LED0,1,2 and 3 flash on the board, the LCD will show "Renesas SH7269".

50. Click the <Stop> button. 

51. The code will stop and the source code will be opened at the current program counter.

5. Next Step

After you have completed this quick start procedure, please review the tutorial code and sample code that came with the kit. You can add projects to the current workspace by selecting (Project > Insert Project) from the main menu. The tutorials will help you understand the device and development process using Renesas Development Tools.

The Hardware manual supplied with this RSK2+ is current at the time of publication. Please check for any updates to the device manual from the Renesas website at: www.renesas.com/renesas_starter_kits

6. Renesas SuperH Compiler

The version of the compiler provided with this RSK2+ is fully functional but time limited. You have 60 days to evaluate the full product before the compiler will limit the code linker to 256k bytes. Full licensed SH compiler versions are available from your Renesas supplier.

7. Support

Online technical support and information is available at: www.renesas.com/renesas_starter_kits

Technical Contact Details

America: techsupport.america@renesas.com

Europe: software_support-eu@lm.renesas.com

Japan: csc@renesas.com

Note on Autoupdate: The Autoupdater is configured to automatically add itself to the Startup folder in the Windows Start Menu and use the registry defaults for access to the web. After restarting the machine the Icon will appear in the System Tray next to the clock. To change the settings or access Autoupdate, simply right-click on the icon and use the menu that appears.

© 2012 Renesas Electronics Europe Ltd. All rights reserved

© 2012 Renesas Electronics Corporation. All rights reserved.

© 2012 Renesas Solutions Corporation. All rights reserved.

Website: www.renesas.com