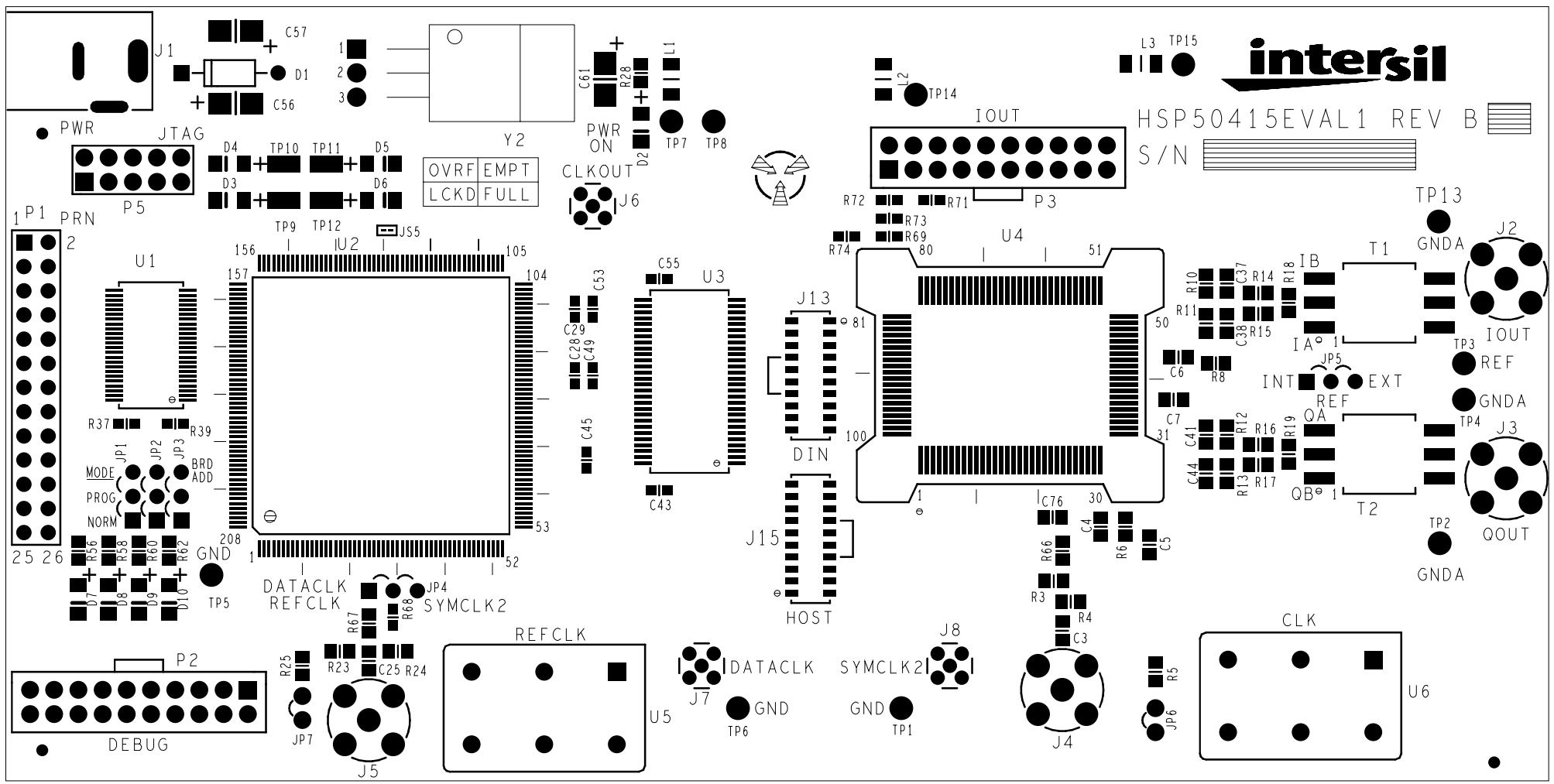




 HSP50415EVAL1 REV B

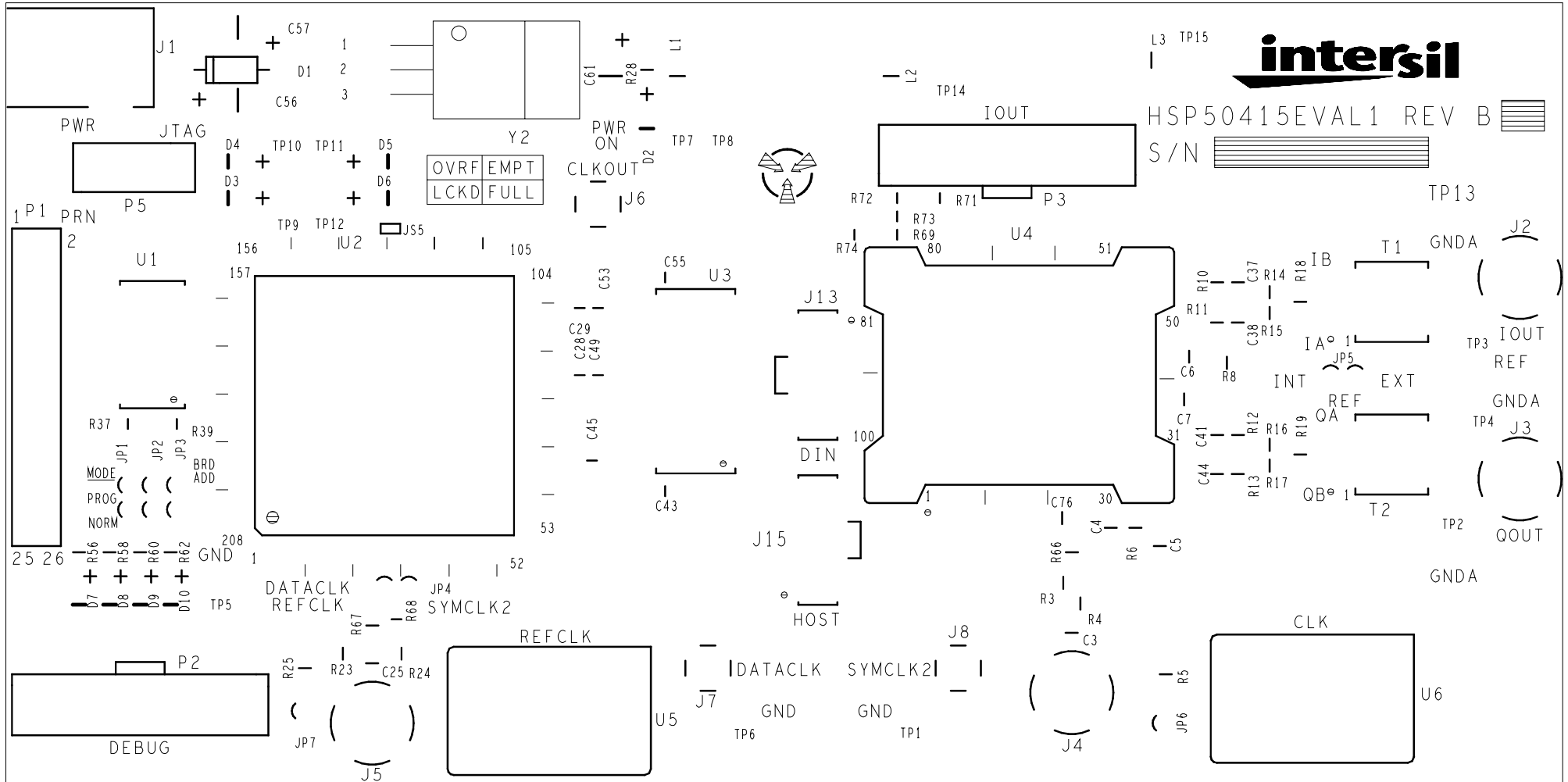
 S/N

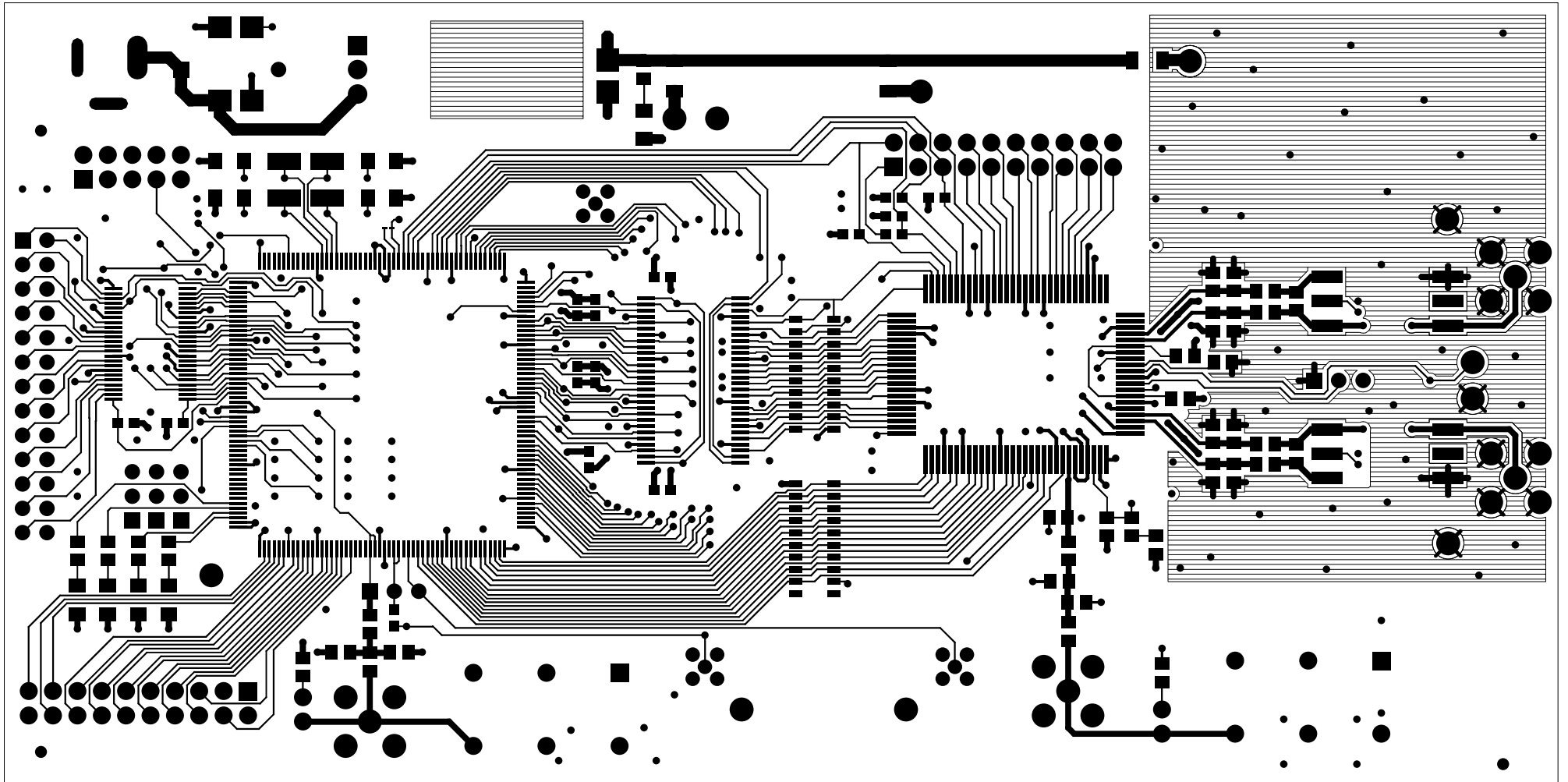


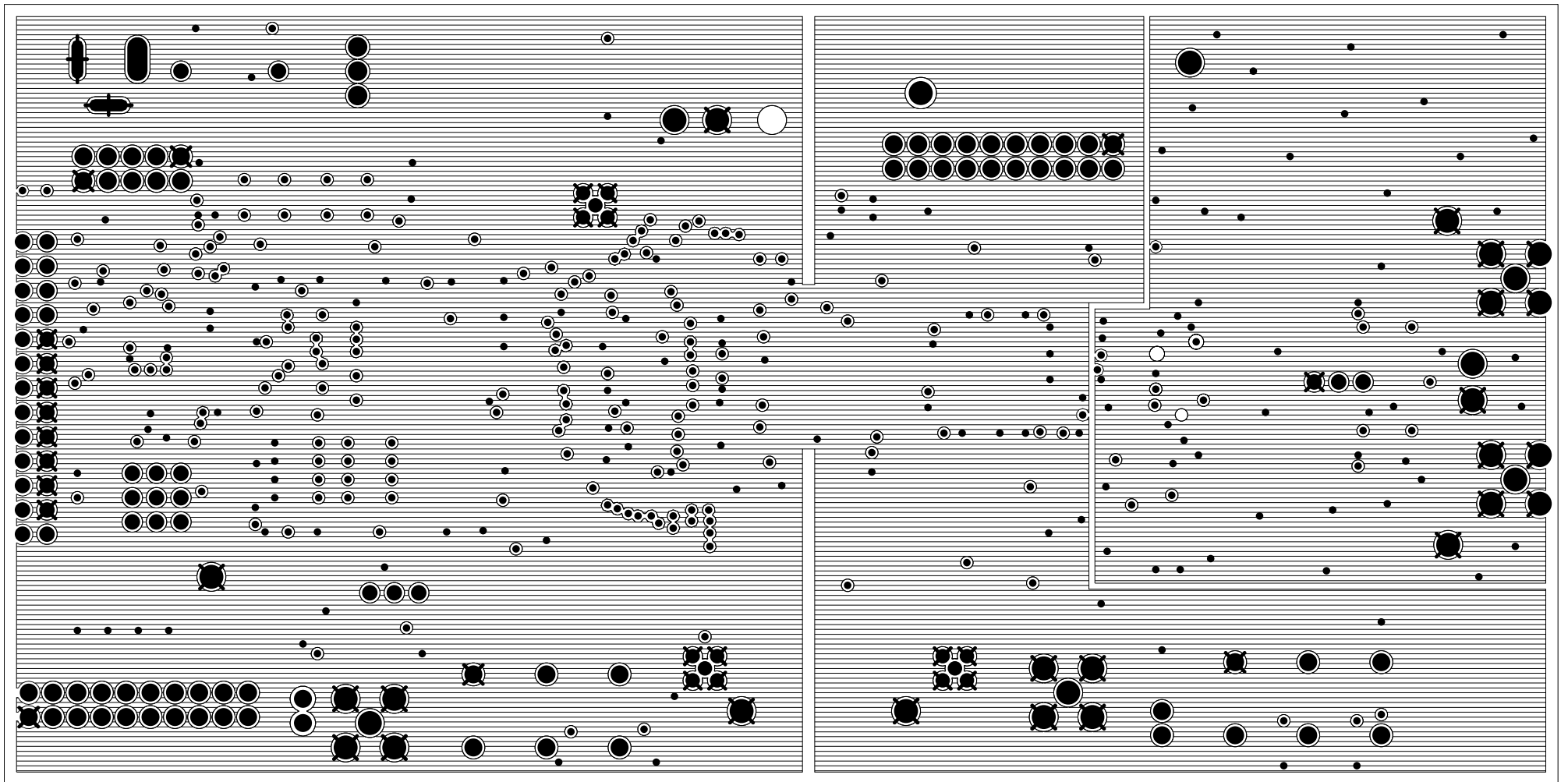


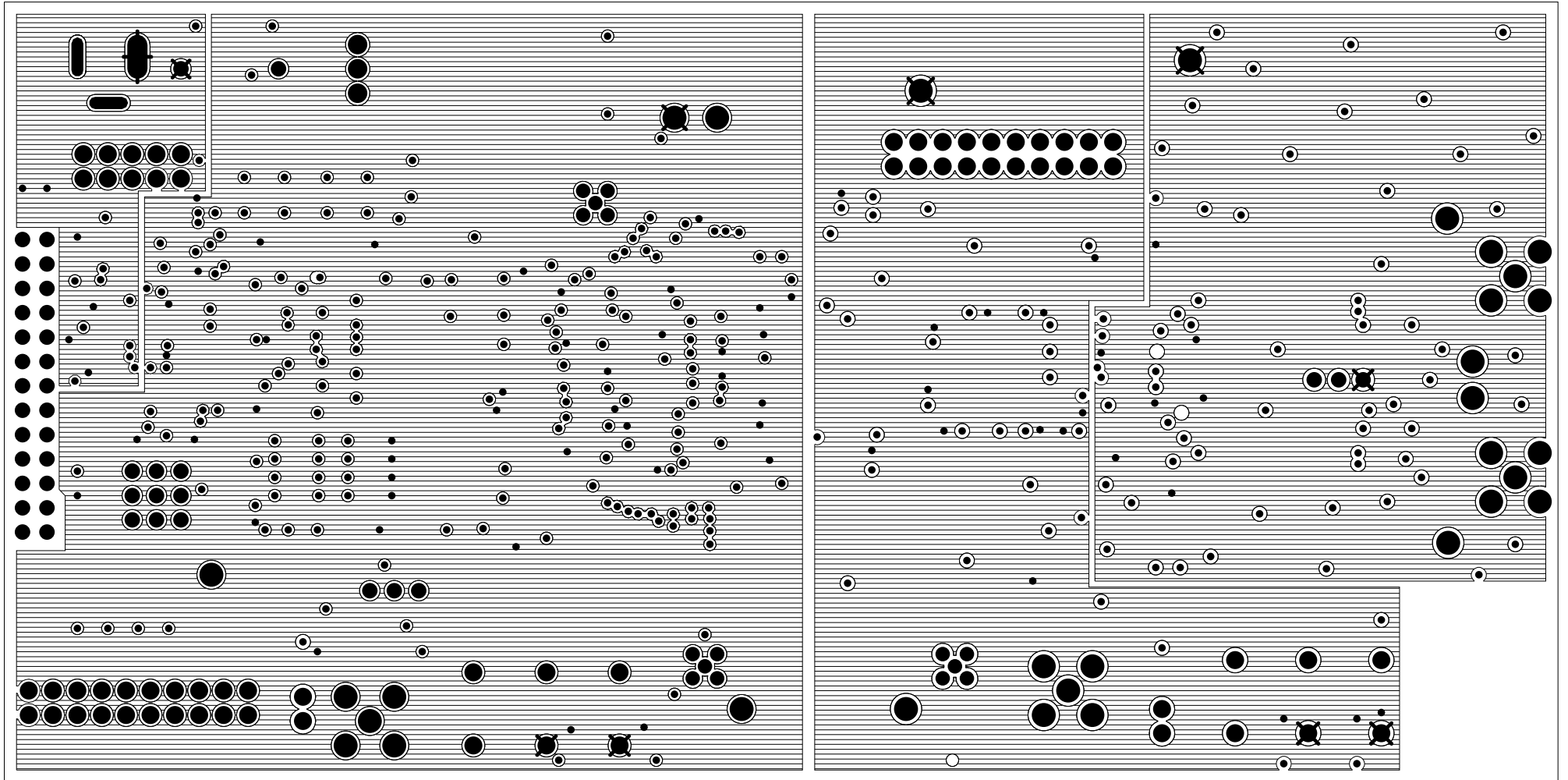
HSP50415EVAL1 REV B

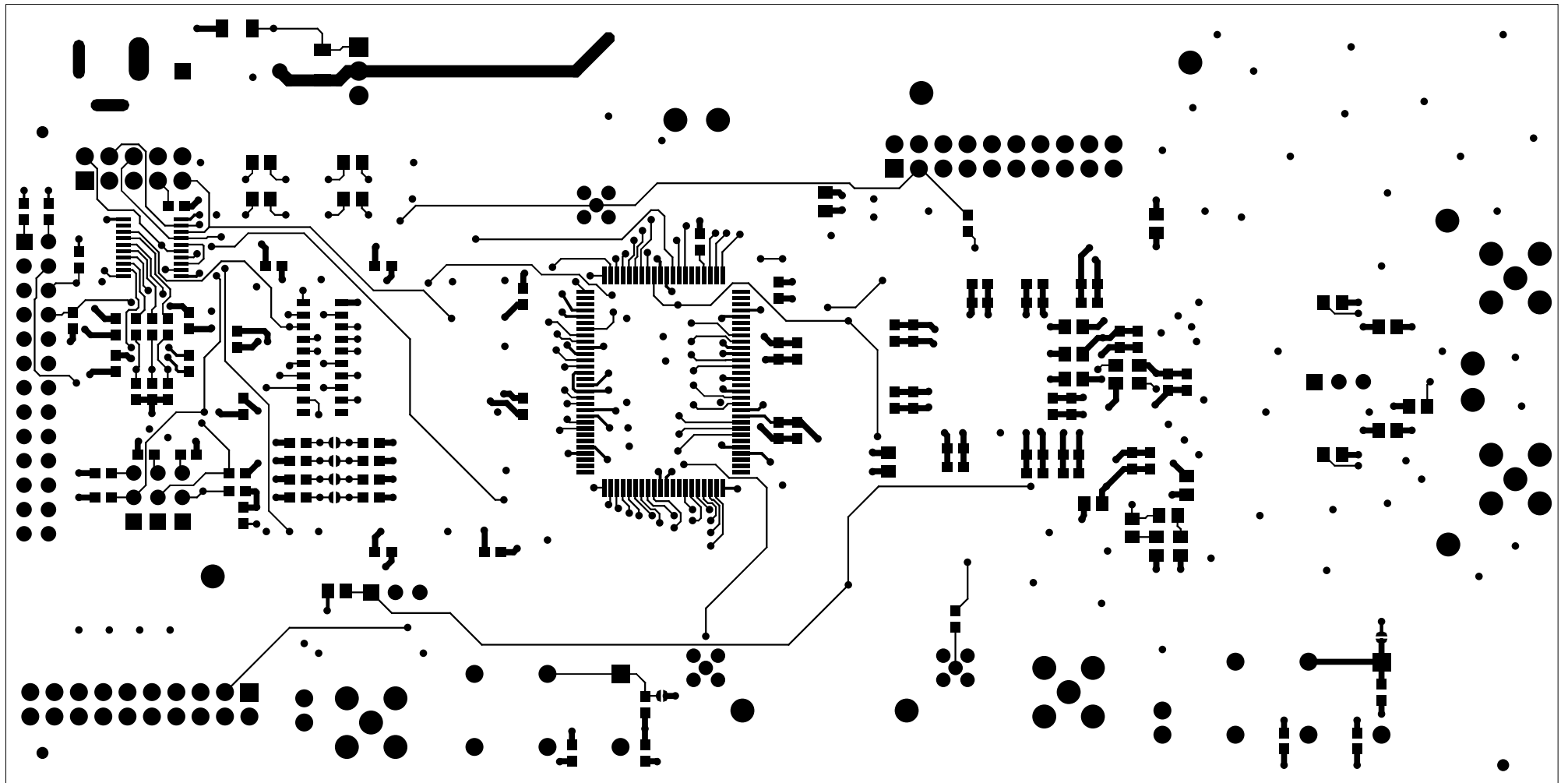
S/N

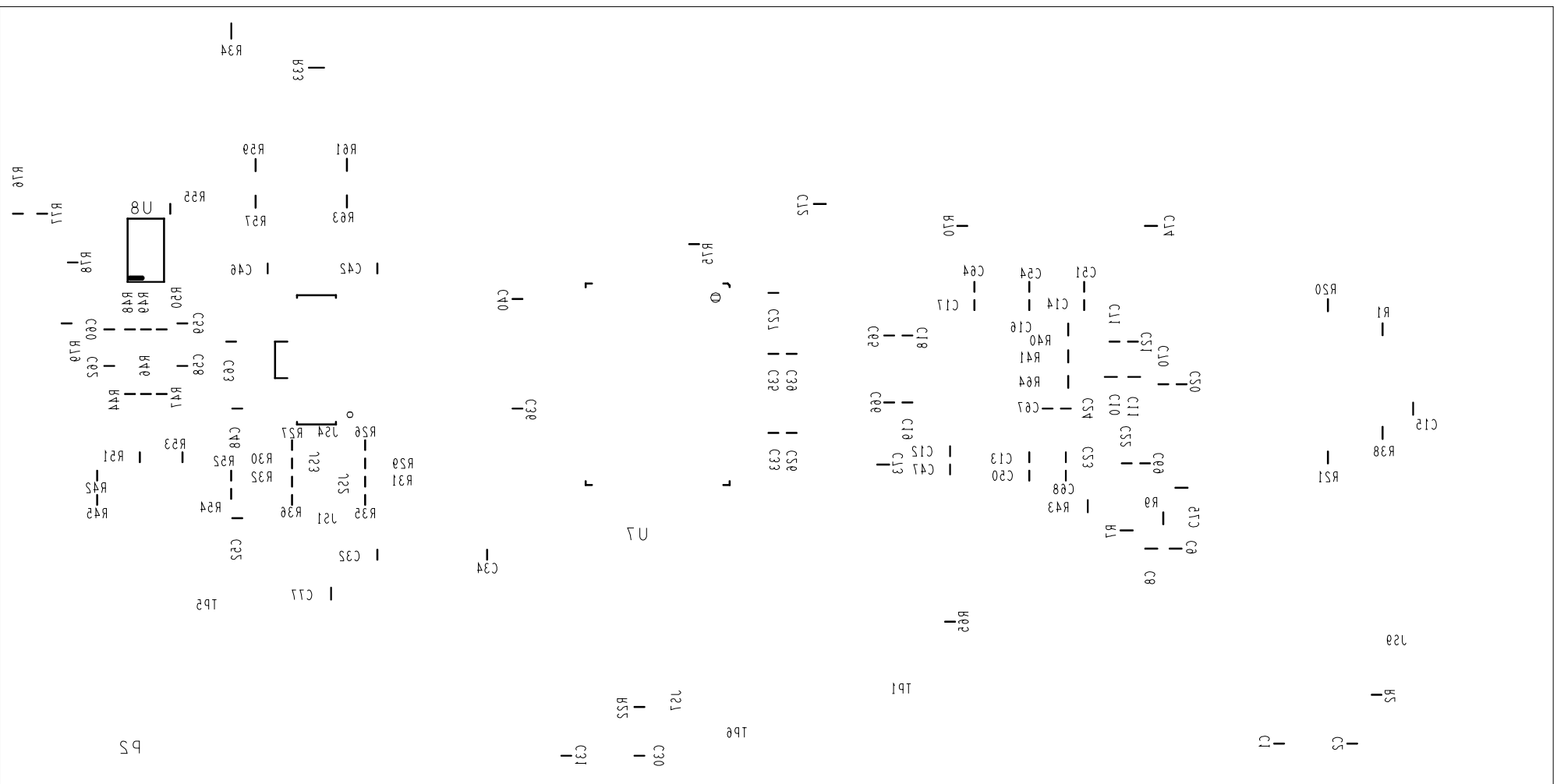


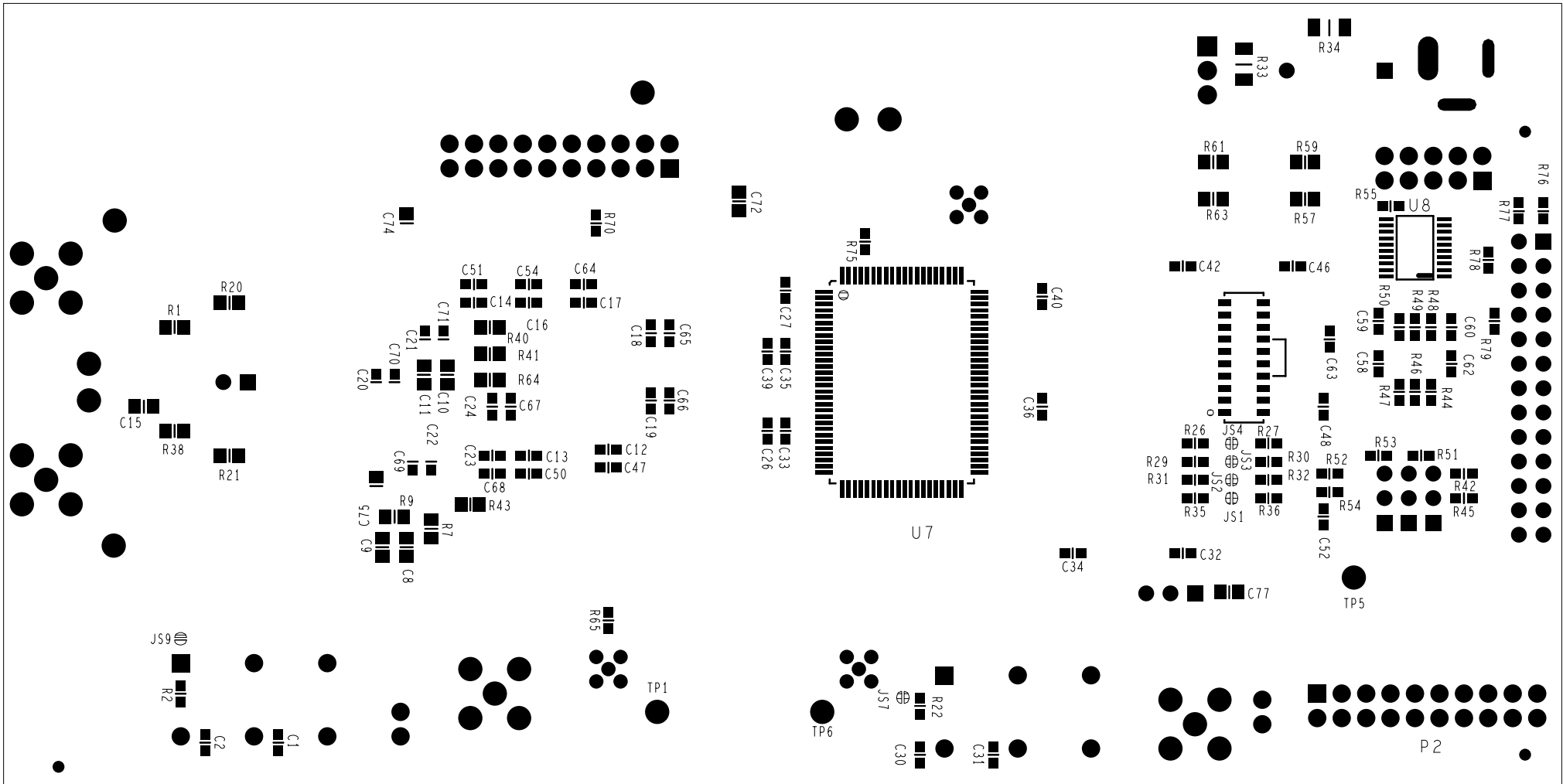








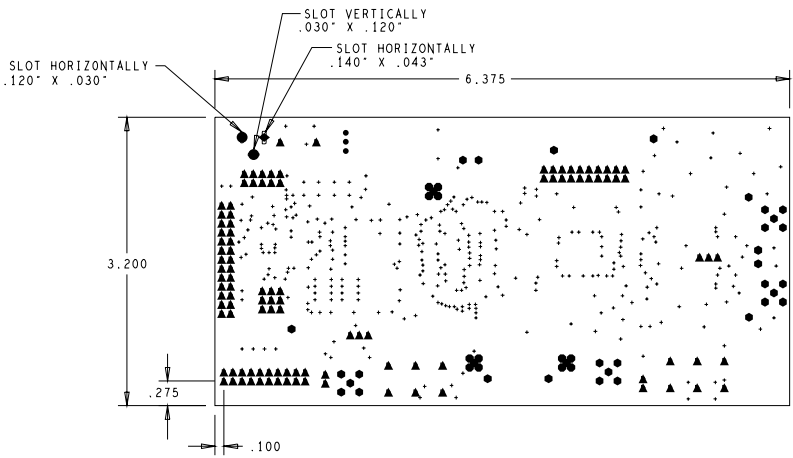




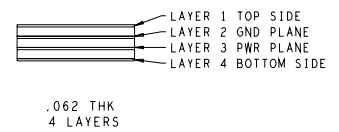
REVISIONS			
NO.	REV.	DESCRIPTION	DATE

NOTES:

1. PRINTED WIRING BOARD DESIGN AND ACCEPTANCE CRITERIA SHALL BE IAW WITH THE REQUIREMENTS OF IPC-2221, -2222 AND IPC-6011, -6012.
2. MATERIAL: LAMINATED PLASTIC SHEET GFN (FR-4) .062 THICK IAW IPC-4101. MUST HAVE UL FLAMMIBILTY RATING OF 94V-0 OR BETTER.
3. FINISH: TIN/LEAD PLATE FUSED OR SOLDER COAT IAW IPC-2221, -2222.
4. ALL PATTERNS ARE VIEWED FROM THE COMPONENT SIDE LOOKING THROUGH THE BOARD.
5. APPLY SOLDER MASK, BOTH SIDES OVER BARE COPPER IAW IPC-SM-840. CLASS 2 TYPE B1 (LPI) USE BLUE MASK
6. UNLESS OTHERWISE SPECIFIED ALL HOLE DIAMETERS ARE AFTER PLATING. TOLERANCE OF +/- .003.
7. DIMENSIONING AND TOLERANCING IAW ANSI Y14.5.
8. REMOVE ALL BURRS AND SHARP EDGES.
9. MINIMUM FINISHED LINE WIDTH SHALL BE .006.
10. APPLY SILKSCREEN TO BOTH SIDES IAW MARKING TEMPLATES, USING WHITE NON-CONDUCTIVE EPOXY INK.
11. PWB MUST BE 100% ELECTRICALLY TESTED FOR SHORTS AND CONTINUITY.
12. MARK DATE CODE AND MANUFACTURERS IDENTIFICATION ON SOLDER SIDE PER IPC-6011, -6012.



DRILL CHART			
FIGURE	SIZE	PLATED	QTY
•	.012	PLATED	358
●	.030	PLATED	2
●	.037	PLATED	15
▲	.041	PLATED	109
◆	.043	PLATED	1
●	.048	PLATED	11
•	.055	PLATED	3
●	.068	PLATED	20



<small>NOTE: IN THE EVENT OF DISCREPANCY BETWEEN THIS DRAWING AND THE PART SPECIFICATION, THE PART SPECIFICATION SHALL PREVAIL.</small> <small>ALL DIMENSIONS ARE IN INCHES UNLESS OTHERWISE SPECIFIED.</small> <small>UNLESS OTHERWISE SPECIFIED, ALL DIMENSIONS SHALL BE TO THE CENTER OF THE HOLE.</small> <small>ALL DIMENSIONS SHALL BE TO THE CENTER OF THE HOLE UNLESS OTHERWISE SPECIFIED.</small> <small>ALL DIMENSIONS SHALL BE TO THE CENTER OF THE HOLE UNLESS OTHERWISE SPECIFIED.</small> <small>ALL DIMENSIONS SHALL BE TO THE CENTER OF THE HOLE UNLESS OTHERWISE SPECIFIED.</small> <small>ALL DIMENSIONS SHALL BE TO THE CENTER OF THE HOLE UNLESS OTHERWISE SPECIFIED.</small>	<small>UNLESS OTHERWISE SPECIFIED, ALL DIMENSIONS SHALL BE TO THE CENTER OF THE HOLE.</small> <small>UNLESS OTHERWISE SPECIFIED, ALL DIMENSIONS SHALL BE TO THE CENTER OF THE HOLE.</small> <small>UNLESS OTHERWISE SPECIFIED, ALL DIMENSIONS SHALL BE TO THE CENTER OF THE HOLE.</small> <small>UNLESS OTHERWISE SPECIFIED, ALL DIMENSIONS SHALL BE TO THE CENTER OF THE HOLE.</small> <small>UNLESS OTHERWISE SPECIFIED, ALL DIMENSIONS SHALL BE TO THE CENTER OF THE HOLE.</small> <small>UNLESS OTHERWISE SPECIFIED, ALL DIMENSIONS SHALL BE TO THE CENTER OF THE HOLE.</small>	<small>DATE:</small> XXXXXXX <small>REV. BY:</small> JS-01-01 <small>REV. NO.:</small> 01 <small>REV. DATE:</small> 01/01/01 <small>REV. BY:</small> JS-01-01 <small>REV. NO.:</small> 01 <small>REV. DATE:</small> 01/01/01	 PRINTED WIRING BOARD- HSP50415EVAL1
		<small>DATE:</small> 01/01/01 <small>REV. BY:</small> JS-01-01 <small>REV. NO.:</small> 01 <small>REV. DATE:</small> 01/01/01	

