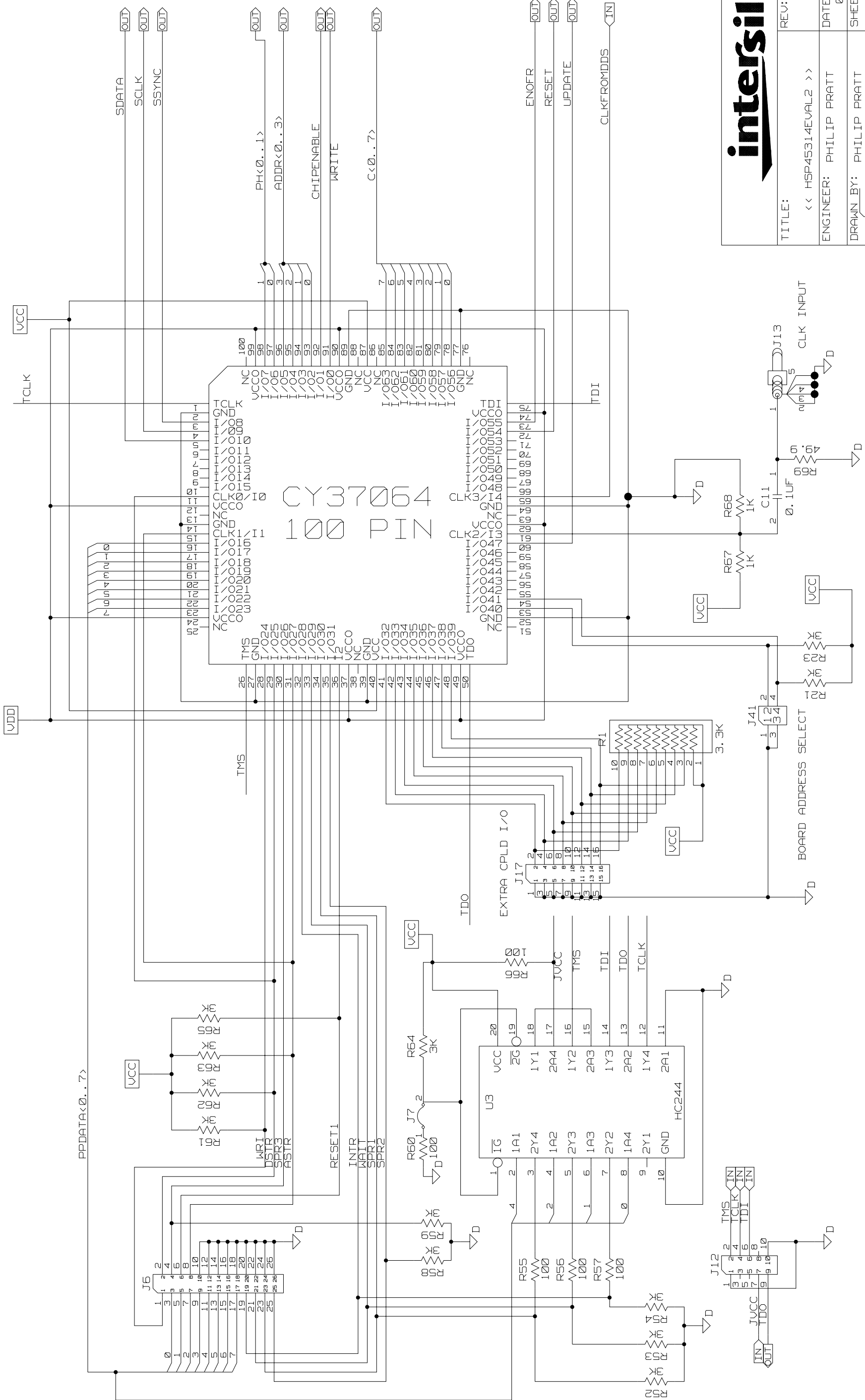


PARALLEL PORT/CPLD FUNCTION

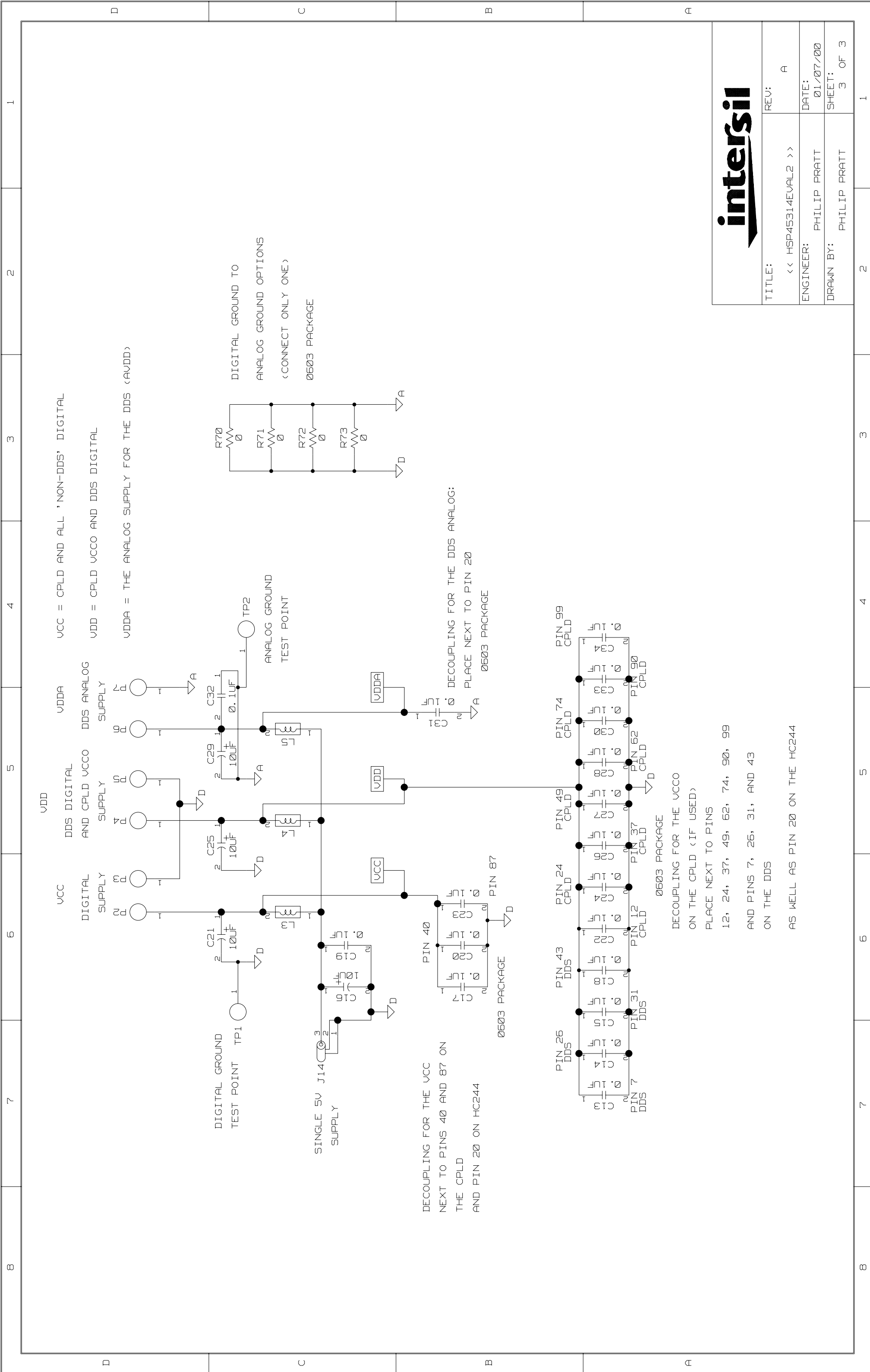


TITLE:	REV: A
<< HSP45314EVAL2 >>	DATE: 01/07/00
ENGINEER: PHILIP PRATT	SHEET: 2 OF 3
DRAWN BY: PHILIP PRATT	

1 2 3 4 5 6 7 8

D C B A

1 3 4 5 6 7 8



intersil	
TITLE:	REV: A
<< HSP45314EVAL2 >>	DATE: 01/07/00
ENGINEER: PHILIP PRATT	SHEET: 3 OF 3
DRAWN BY: PHILIP PRATT	