

### RZ Ecosystem Partner Solution

# MYIR RZ/G2L High-Performance SOM



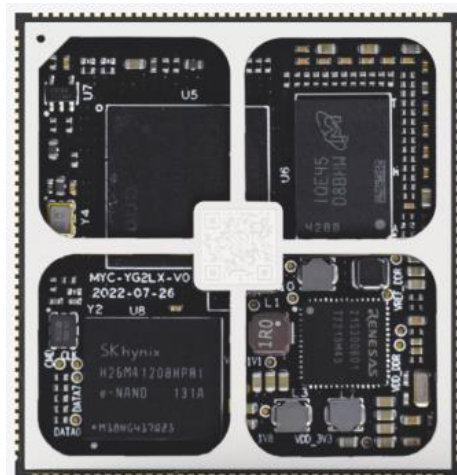
### Solution Summary

The RZ/G2L high-performance system on module (SOM) is equipped with Renesas high-performance and cost-effective [RZ/G2L](#) processor, ideal for a wide range of industrial applications. Single/dual core Cortex-A55@1.2GHz+Cortex-M33@200MHz; Integrated Arm mali-G31 3D GPU, VPU supports H.264 1920\*1080@30FPS video codec; Rich multimedia interface such as MIPI-DSI/RGB/MIPI-CSI/Parallel CSI, supporting 1080P HD display; Supports 2 Gigabit Ethernet interfaces, 2 CAN FD interfaces, 2 USB2.0 interfaces, and 5 UARTs

### Features/Benefits

- CPU: RZ/G2L, dual Cortex-A55@1.2G +Cortex-M33@200M
- RAM: 1GB/2GB DDR4 (supports optional 3GB/4GB DDR4)
- Flash: 8GB eMMC (supports optional 4GB/16GB/32GB eMMC)
- EEPROM: 32KB EEPROM
- OS: Linux 5.10, Ubuntu20.04
- Size: 43mm x 45mm

### Diagrams / Graphics



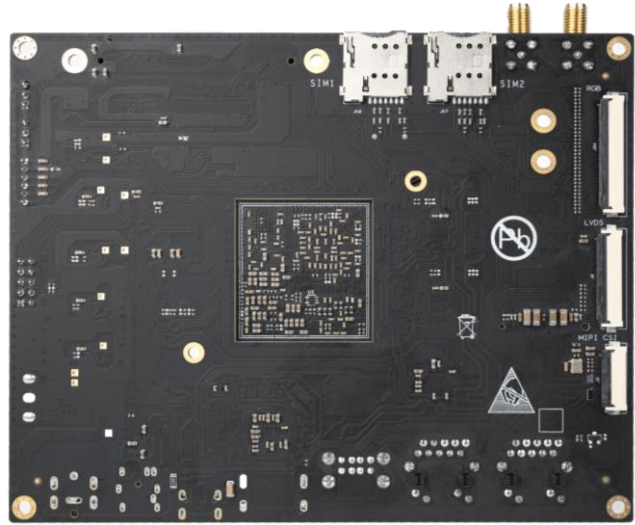
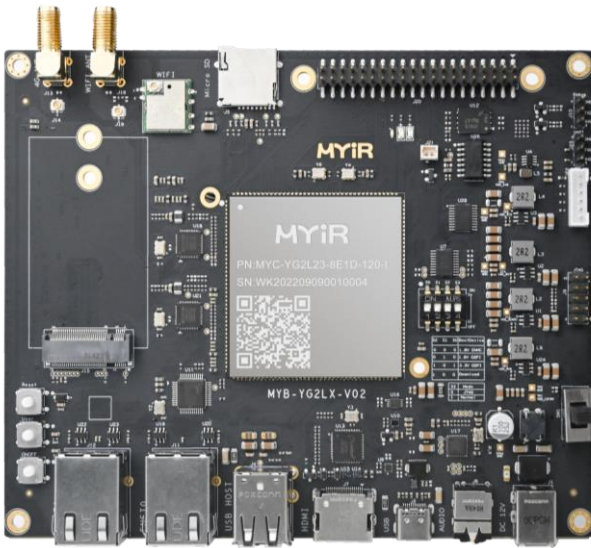
## MYC-YG2LX CPU Module

### Target Markets and Applications

- Construction machinery
- Industrial automation
- Charging pile
- Medical instrument
- Smart city

<https://www.myirtech.com/list.asp?id=718>

## MYD-YG2LX Development Board



### MYD-YG2LX Development Board Resources:

	Function	Description
System	POWER	12V DC
	KEY	1*RESET, 1*USER, 1*ON/OFF
	BOOT SET	1*BOOT Switch
	SD	1*Micro SD
	DEBUG	1*Debug UART, 1*JTAG
	QSPI	1*QSPI
Communication Interface	WIFI/BT	1*WIFI Module
	5G/4G	1*5G/4G Module Interface
	Ethernet	2*10/100/1000M
	USB	2* USB 2.0 HOST 1*USB 2.0 OTG
	UART	4*UART
	CAN	1*CAN
Multimedia Interface	DISPLAY	1*LVDS 1*HDMI 1*RGB
	CAMERA	1*MIPI CSI
	AUDIO	1*Audio
Expansion Interface	RPI Interface	1*40PIN Header, GPIO/I2C/UART/SPI/CAN

Learn more: <https://www.myirtech.com/list.asp?id=718>