

Product Specifications of the Touch Sensing Development Kit

- Touch sensing evaluation kit (part# Y-RX113CAPT01)



Items included in package:

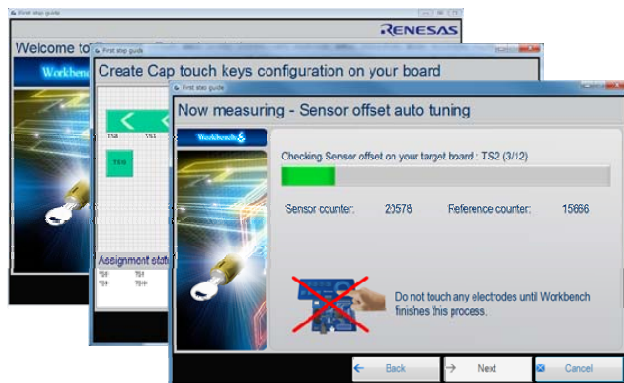
- CPU board (mounted with RX113 Group 100-pin-QFP microcontroller)
- Touch sensing evaluation boards
 - ① Self-capacitance: Evaluation board for keys, sliders, and touch wheels
 - ② Self-capacitance: Evaluation board for proximity sensing
 - ③ Mutual capacitance: Evaluation board for key matrix
 - ④ Mutual capacitance: Evaluation board for trackpads
- Contents of supplied CD
 - Workbench 6
 - Evaluation software
 - Development environment

- Application notes

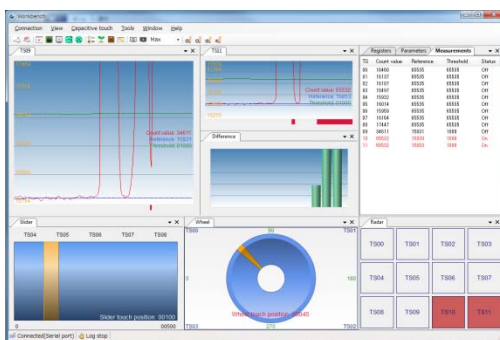
■ Main specifications of Workbench



Initial menu at launch. The various functions are launched from this menu.



Sensitivity parameter automatic tuning screens. Even beginners can optimally tune sensitivity parameters and output source code simply by following along with the GUI style wizard interface.



The tuning window.

Using software generated by the automatic tuning function, you can check the sensitivity of

keys, sliders, and touch wheels in real time. You can also adjust the sensitivity (requiring only a light touch, or requiring a firm touch for the switch to turn on) and update the source code accordingly.

###

(Remarks)

SuperFlash memory technology used in Renesas Electronics' RX113 MCUs is licensed from Silicon Storage Technology Inc. SuperFlash is a registered trademark of Silicon Storage Technology in the U.S., Japan, and other countries. All other registered trademarks or trademarks are the property of their respective owners.

The content in the press release, including, but not limited to, product prices and specifications, is based on the information as of the date indicated on the document, but may be subject to change without prior notice.