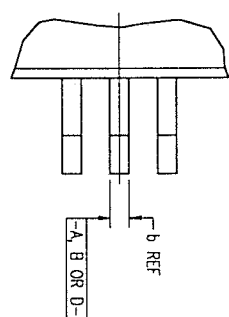
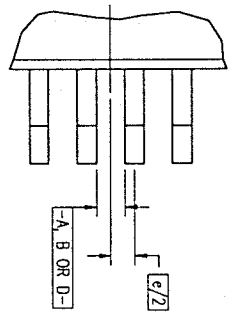


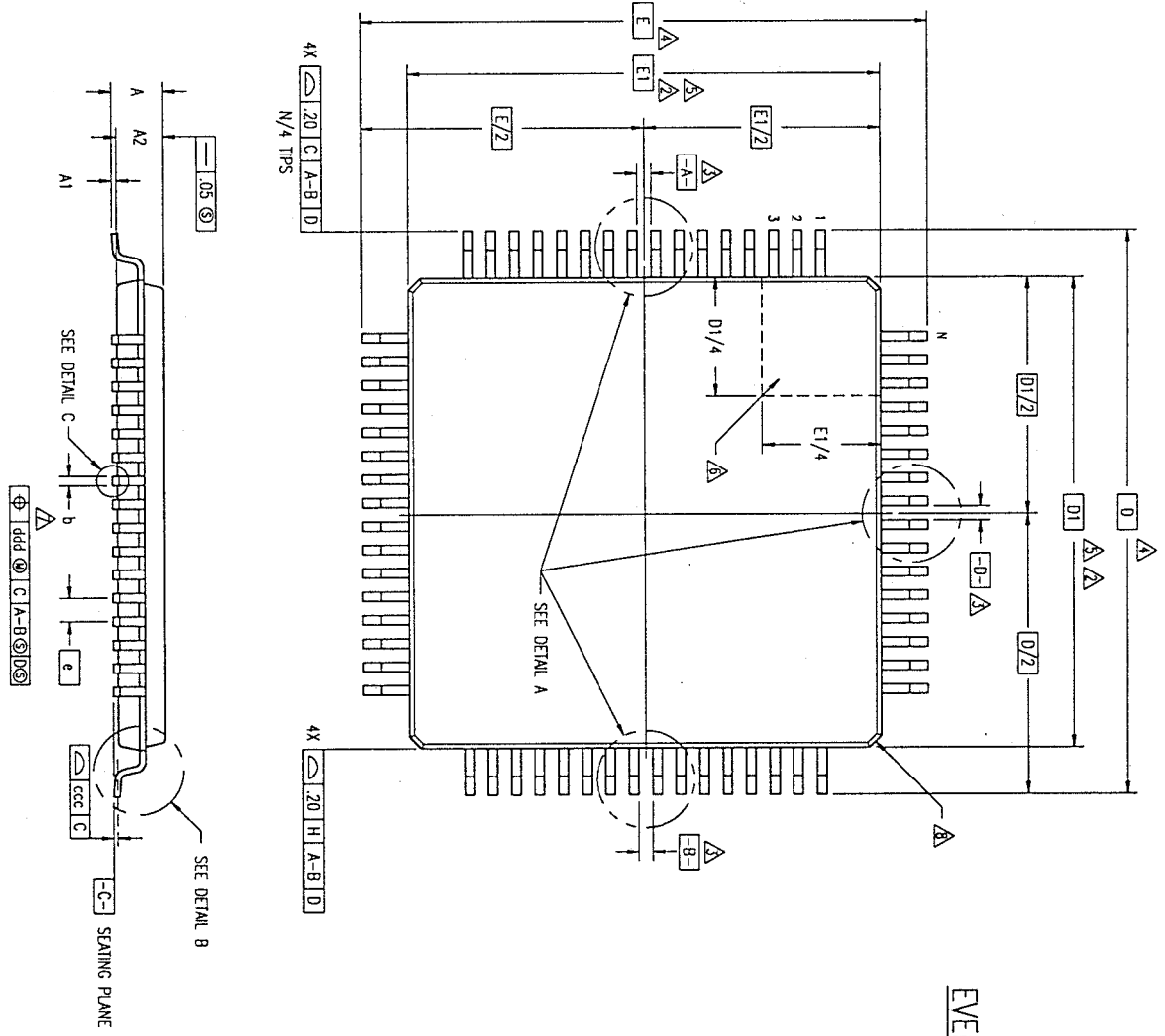
REVISIONS				
DCN	REV	DESCRIPTION	DATE	APPROVED
62249	00	INITIAL RELEASE	07/10/99	<i>[Signature]</i>

EVEN LEAD SIDES

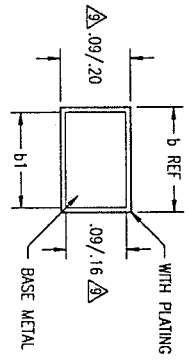
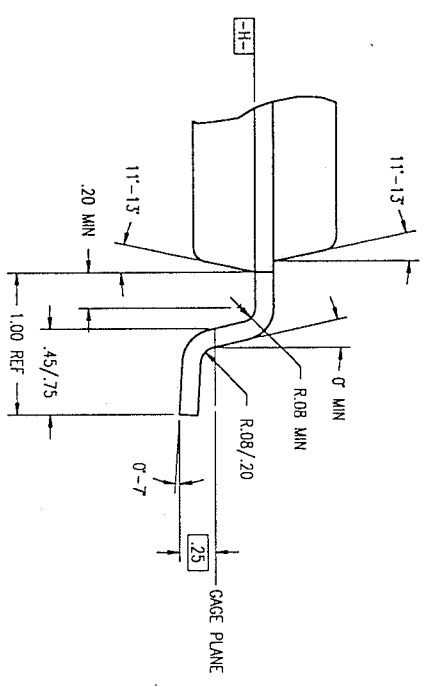
ODD LEAD SIDES



DETAIL A



DETAIL B



DETAIL C

TOLERANCES UNLESS SPECIFIED		 Integrated Device Technology, Inc. 2975 Slender Way, Santa Clara, CA 95054 PHONE: (408) 727-6116 FAX: (408) 492-8674 TWP: 910-338-2070
DECIMAL	ANGULAR	
±	±	
XXXX	XXXX	
APPROVALS	DATE	TITLE
DRW: 279	07/10/98	DE PACKAGE OUTLINE
CHECKED		10.0 X 10.0 X 1.0 mm TOPP
		1.00/.10 FORM
SIZE	DRAWING No.	PSC-4079
C		
DO NOT SCALE DRAWING		
SHEET 1 OF 2		
REV		00

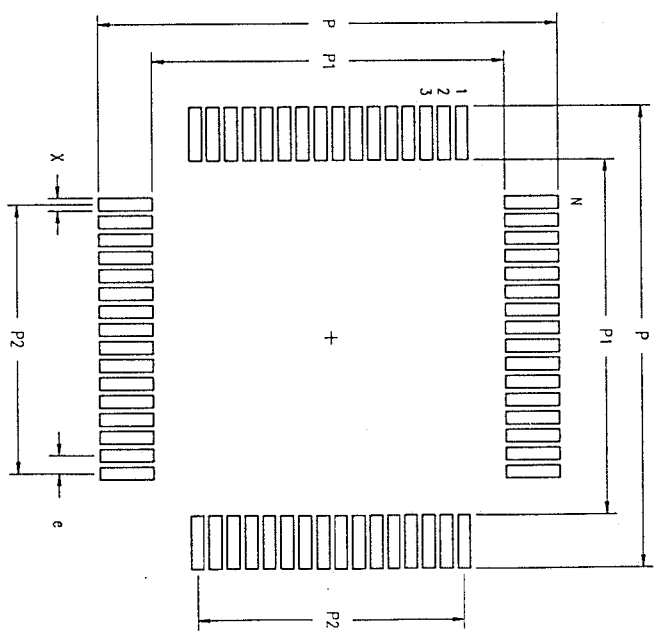
REVISIONS			
DCN	REV	DESCRIPTION	DATE
62249	00	INITIAL RELEASE	07/10/99

LAND PATTERN DIMENSIONS

SYMBOL	JEDEC VARIATION			NOM	E
	MIN	NOM	MAX		
A	-	-	1.20		
A1	.05	.10	.15		
A2	.95	1.00	1.05		
D		12.00 BSC		4	
D1		10.00 BSC		5.2	
E		12.00 BSC		4	
E1		10.00 BSC		5.2	
N		64			
e		.50 BSC			
b	.17	.22	.27		7
b1	.17	.20	.23		
ccc	-	-	.08		
ddd	-	-	.08		

NOTES:

- ALL DIMENSIONING AND TOLERANCING CONFORM TO ANSI Y14.5M-1982
- TOP PACKAGE MAY BE SMALLER THAN BOTTOM PACKAGE BY .15 mm
- DATUMS [A-B] AND [-D-] TO BE DETERMINED AT DATUM PLANE [-H-]
- DIMENSIONS D AND E ARE TO BE DETERMINED AT SEATING PLANE [-C-]
- DIMENSIONS D1 AND E1 DO NOT INCLUDE MOLD PROTRUSION. ALLOWABLE MOLD PROTRUSION IS .25 mm PER SIDE. D1 AND E1 ARE MAXIMUM BODY SIZE DIMENSIONS INCLUDING MOLD MISMATCH
- DETAILS OF PIN 1 IDENTIFIER IS OPTIONAL BUT MUST BE LOCATED WITHIN THE ZONE INDICATED
- DIMENSION b DOES NOT INCLUDE DAMBAR PROTRUSION. ALLOWABLE DAMBAR PROTRUSION IS .08 mm IN EXCESS OF THE b DIMENSION AT MAXIMUM MATERIAL CONDITION. DAMBAR CANNOT BE LOCATED ON THE LOWER RADIUS OR THE FOOT.
- EXACT SHAPE OF EACH CORNER IS OPTIONAL
- THESE DIMENSIONS APPLY TO THE FLAT SECTION OF THE LEAD BETWEEN .10 AND .25 mm FROM THE LEAD TIP
- ALL DIMENSIONS ARE IN MILLIMETERS
- THIS OUTLINE CONFORMS TO JEDEC PUBLICATION 95 REGISTRATION MS-026, VARIATION ACD



	MIN	MAX
P	12.80	13.00
P1	9.80	10.00
P2	7.50 BSC	
X	.30	.40
e	.50 BSC	
N	64	

TOLERANCES UNLESS SPECIFIED			Integrated Device Technology, Inc. 2975 Stender Way, Santa Clara, CA 95054 PHONE: (408) 727-6116 FAX: (408) 492-8674 TWK: 910-358-2070	
DECIMAL	ANGULAR		DATE	TITLE
±	±	07/10/99	DE PACKAGE OUTLINE	
XXXX	XXXX	DRAWN BY	10.0 X 10.0 X 1.0 mm TOPP	
XXXX	XXXX	CHECKED	1.00/.10 FORM	
APPROVALS	DATE	SIZE	DRAWING No.	
370	07/10/99	C	PSC-4079	
DO NOT SCALE DRAWING		REV	00	
		SHEET 2 OF 2		