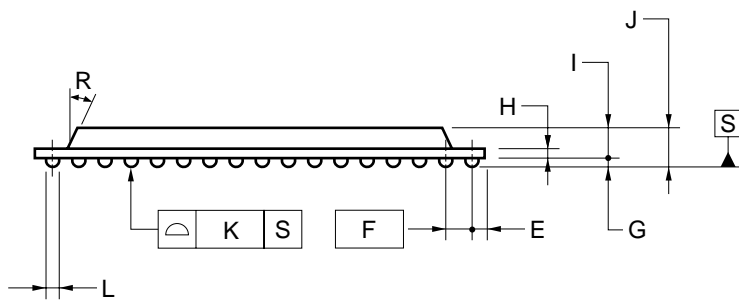
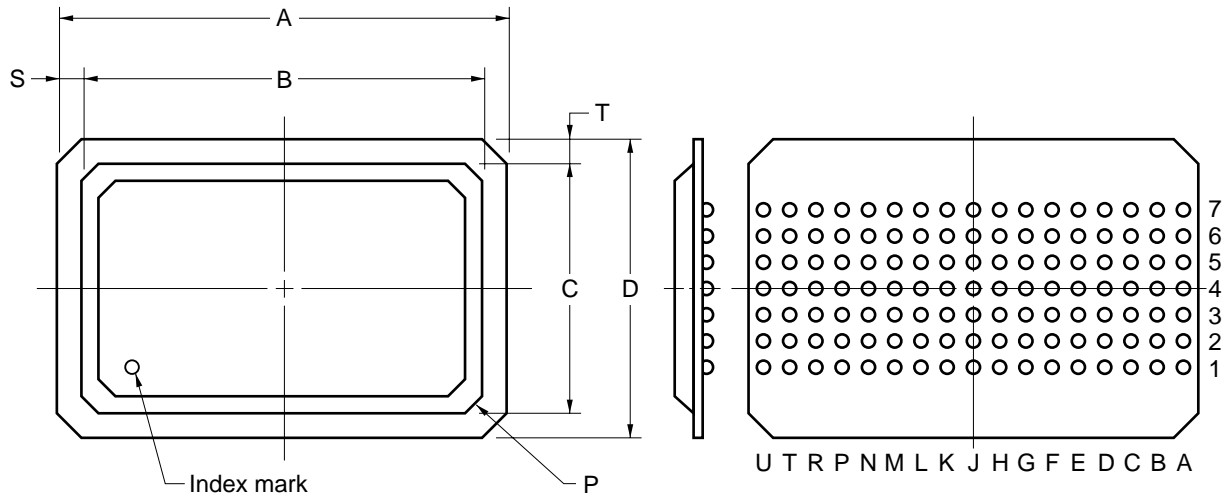


119-PIN PLASTIC BGA



ITEM	MILLIMETERS
A	22.0±0.2
B	19.5
C	12.0
D	14.0±0.2
E	0.84
F	1.27 (T.P.)
G	0.6±0.1
H	0.56
I	1.46±0.1
J	2.30 MAX.
K	0.15
L	∅0.78±0.1
P	C0.7
R	25°
S	1.25
T	1.0

P119S1-127-R4-1