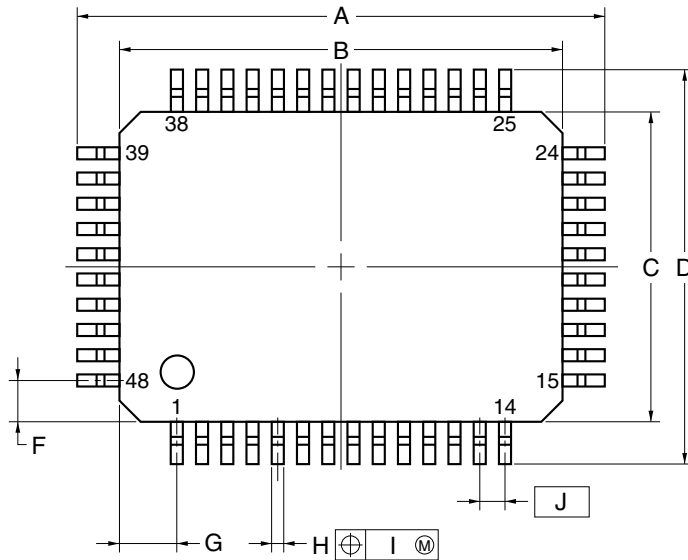
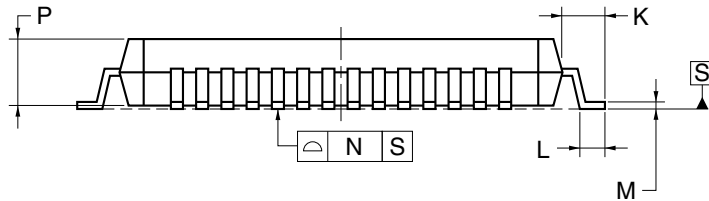
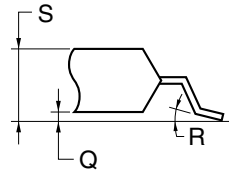


48-PIN PLASTIC QFP (10x14)



detail of lead end



NOTE

Each lead centerline is located within 0.15 mm of its true position (T.P.) at maximum material condition.

ITEM	MILLIMETERS
A	16.8±0.4
B	14.0±0.2
C	10.0±0.2
D	12.8±0.4
F	1.4
G	1.8
H	0.35±0.10
I	0.15
J	0.8 (T.P.)
K	1.4±0.2
L	0.6±0.2
M	0.20 ^{+0.10} _{0.05}
N	0.10
P	2.2±0.1
Q	0.125±0.075
R	5°±5°
S	2.5 MAX.

P48GH-80-2A5-5