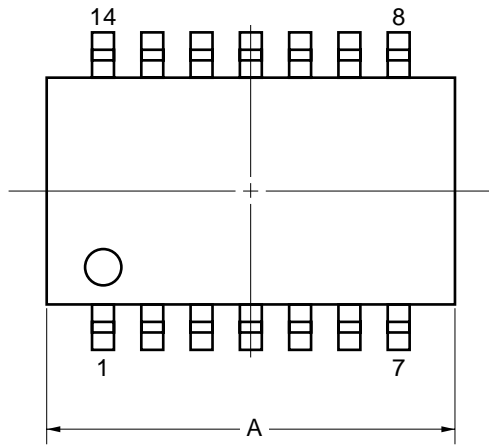
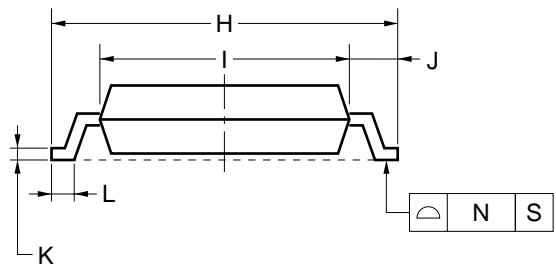
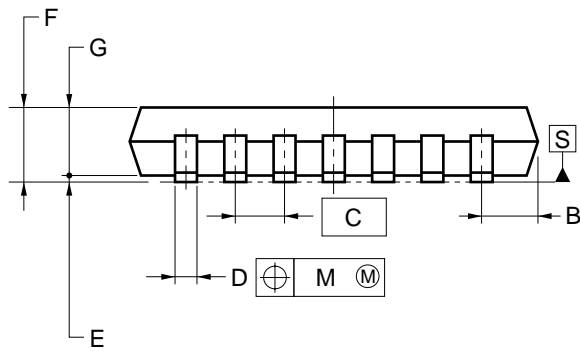
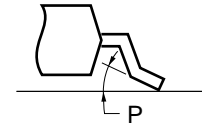


14-PIN PLASTIC SOP (7.62 mm (300))



detail of lead end



NOTE

Each lead centerline is located within 0.12 mm of its true position (T.P.) at maximum material condition.

ITEM	MILLIMETERS
A	10.46 MAX.
B	1.42 MAX.
C	1.27 (T.P.)
D	0.40 ^{+0.10} _{-0.05}
E	0.1±0.1
F	1.8 MAX.
G	1.55
H	7.7±0.3
I	5.6
J	1.1
K	0.20 ^{+0.10} _{-0.05}
L	0.6±0.2
M	0.12
N	0.10
P	3° ^{+7°} _{-3°}