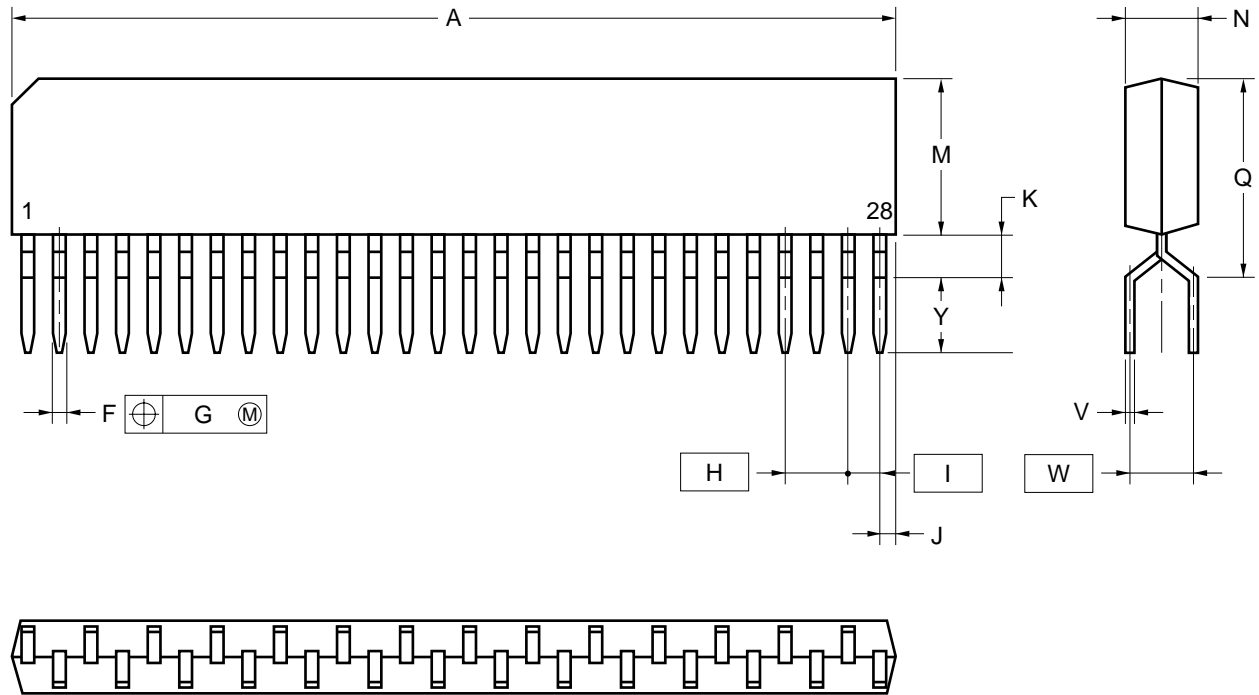


## 28-PIN PLASTIC ZIP (10.16 mm (400))



### NOTE

Each lead centerline is located within 0.25 mm of its true position (T.P.) at maximum material condition.

ITEM	MILLIMETERS
A	36.83 MAX.
F	0.5±0.1
G	φ 0.25
H	2.54
I	1.27
J	1.27 MAX.
K	1.0 MIN.
M	8.9 MAX.
N	2.8±0.2
Q	10.16 MAX.
V	0.25 <sup>+0.10</sup> <sub>-0.05</sub>
W	2.54
Y	3.3±0.5

P28V-254-400A-2