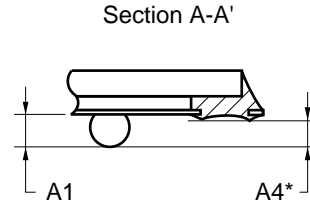
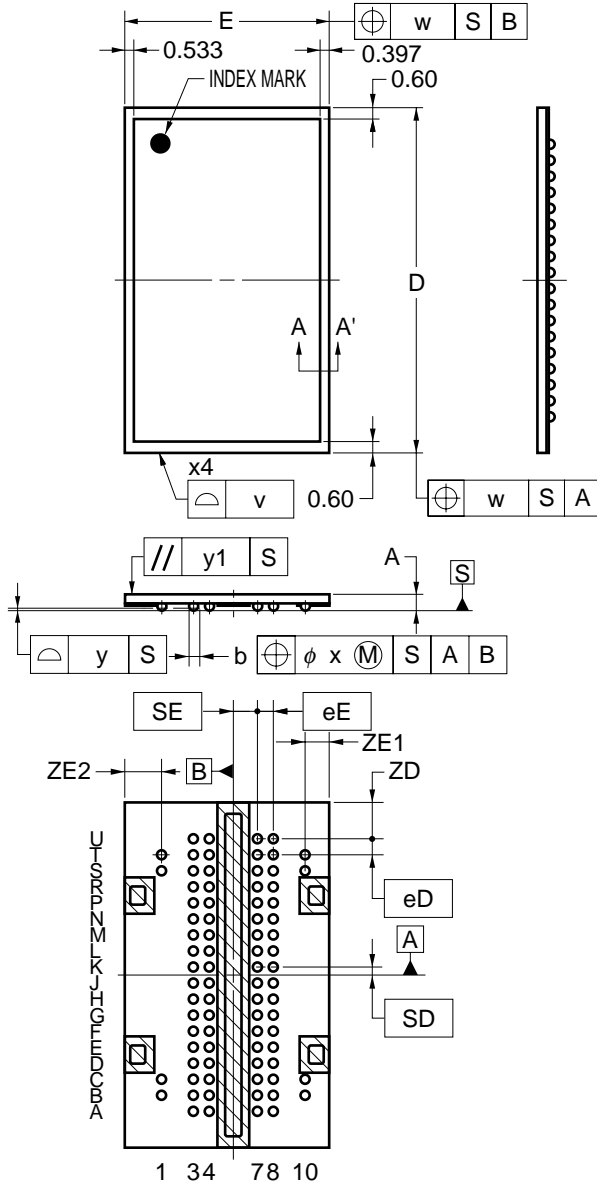


80-PIN TAPE FBGA (10.2x17.16)



| ITEM | MILLIMETERS |
|------|-------------|
| D | 17.16±0.10 |
| E | 10.2±0.1 |
| v | 0.15 |
| w | 0.2 |
| A | 0.96±0.10 |
| A1 | 0.40±0.05 |
| A4 | 0.3 MIN. |
| eD | 0.8 |
| eE | 0.8 |
| b | 0.50±0.05 |
| x | 0.08 |
| y | 0.1 |
| y1 | 0.2 |
| SD | 0.4 |
| SE | 1.2 |
| ZD | 1.78 |
| ZE1 | 1.1 |
| ZE2 | 1.9 |

NOTE
* :It applies to hatching part

P80FF-80-DH1