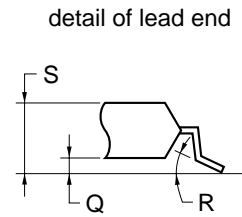
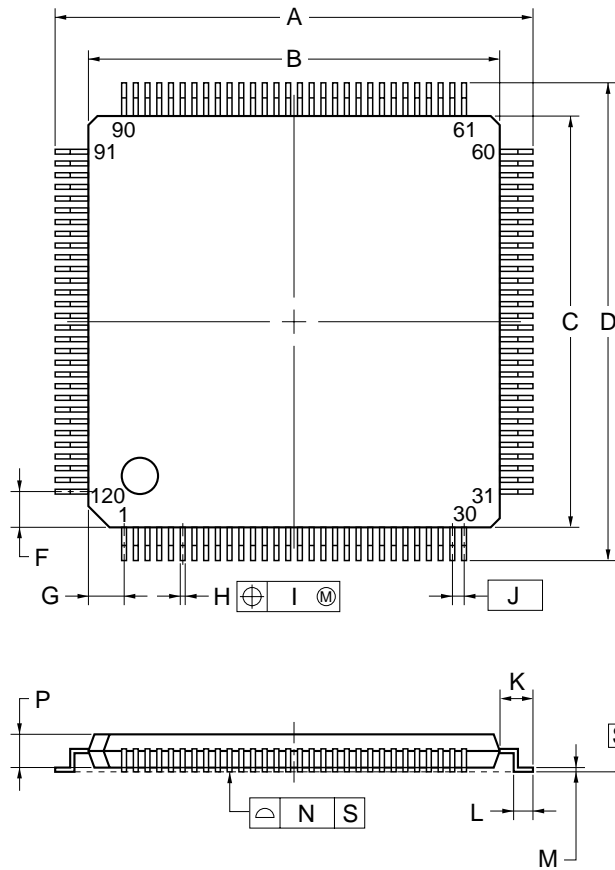


# 120-PIN PLASTIC TQFP (FINE PITCH) (14x14)



## NOTE

Each lead centerline is located within 0.09 mm of its true position (T.P.) at maximum material condition.

ITEM	MILLIMETERS
A	16.0±0.2
B	14.0±0.2
C	14.0±0.2
D	16.0±0.2
F	1.2
G	1.2
H	0.18±0.05
I	0.09
J	0.4 (T.P.)
K	1.0±0.2
L	0.5±0.2
M	0.145±0.05
N	0.08
P	1.0±0.1
Q	0.1±0.05
R	3°+7° -3°
S	1.2 MAX.

S120GC-40-9EV-1