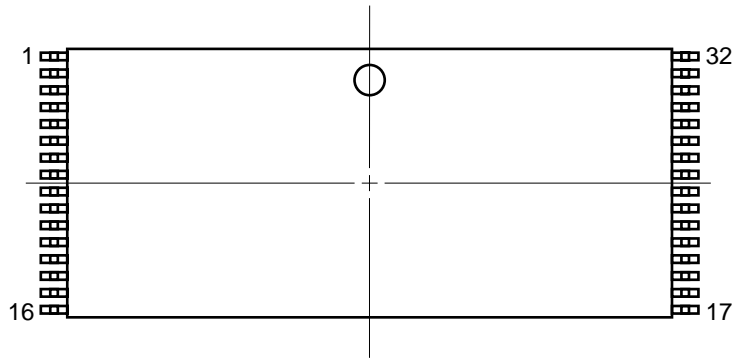
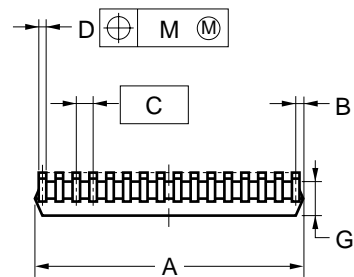
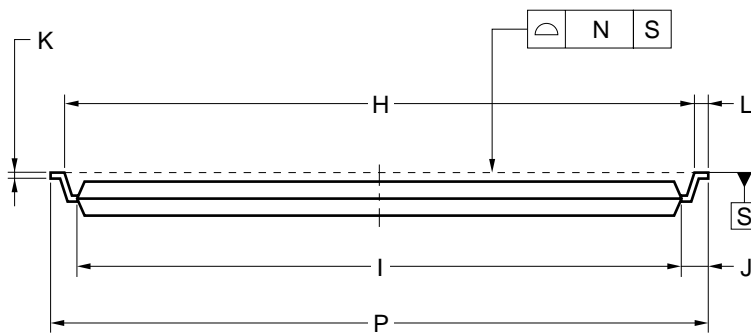
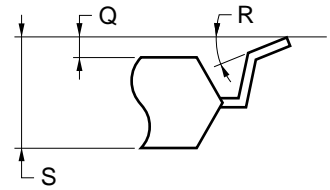


## 32-PIN PLASTIC TSOP (I) (8x20)



detail of lead end



### NOTES

- Each lead centerline is located within 0.08 mm of its true position (T.P.) at maximum material condition.
- "A" excludes mold flash. (Includes mold flash : 8.3 mm MAX.)

ITEM	MILLIMETERS
A	8.0±0.1
B	0.45 MAX.
C	0.5 (T.P.)
D	0.20±0.10
G	1.02 MAX.
H	19.0±0.2
I	18.4±0.2
J	0.8±0.2
K	0.125 <sup>+0.10</sup> <sub>-0.05</sub>
L	0.5±0.1
M	0.08
N	0.10
P	20.0±0.2
Q	0.05±0.05
R	5°±5°
S	1.1 MAX.

S32GZ-50-KKH-4