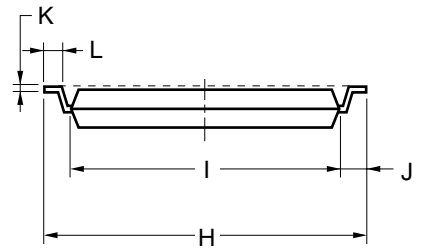
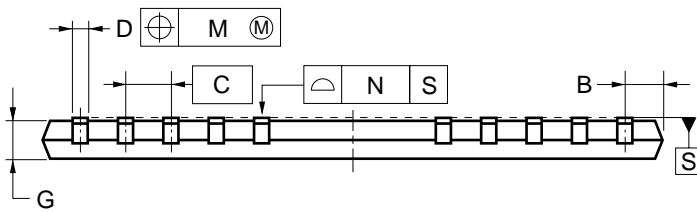
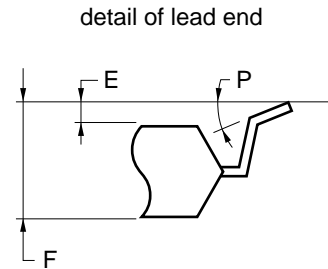
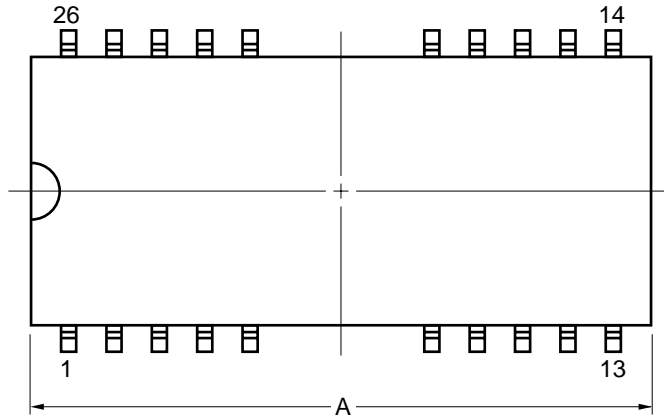


26-PIN PLASTIC TSOP (II) (7.62mm(300))



NOTE

Each lead centerline is located within 0.21 mm of its true position (T.P.) at maximum material condition.

ITEM	MILLIMETERS
A	17.54 MAX.
B	1.18 MAX.
C	1.27 (T.P.)
D	0.40±0.10
E	0.05±0.05
F	1.13 MAX.
G	1.0
H	9.22±0.2
I	7.62±0.1
J	0.8±0.2
K	0.125 ^{+0.10} _{-0.05}
L	0.5±0.1
M	0.21
N	0.10
P	5°±5°

S26GS-50-9KD-3