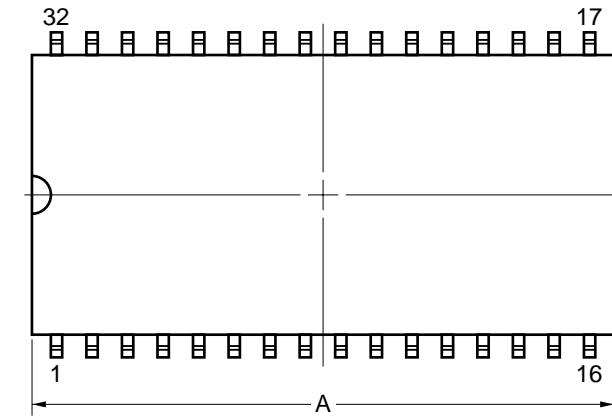
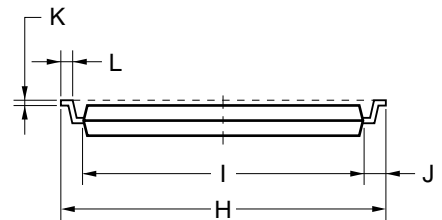
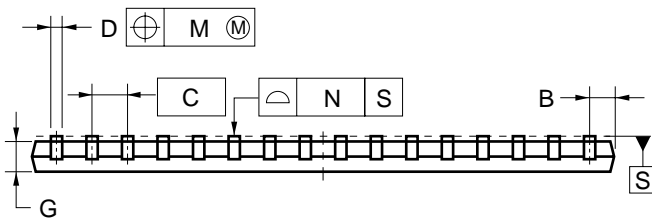
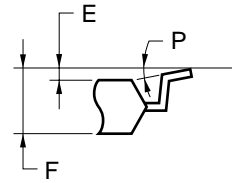


### 32-PIN PLASTIC TSOP (II) (10.16mm(400))



detail of lead end



#### NOTE

Each lead centerline is located within 0.21 mm of its true position (T.P.) at maximum material condition.

ITEM	MILLIMETERS
A	21.17 MAX.
B	1.06 MAX.
C	1.27 (T.P.)
D	0.40±0.10
E	0.05±0.05
F	1.1 MAX.
G	0.97
H	11.76±0.2
I	10.16±0.1
J	0.8±0.2
K	0.125 <sup>+0.10</sup> <sub>-0.05</sub>
L	0.5±0.1
M	0.21
N	0.10
P	3°±3°

S32G5-50-7KD-3