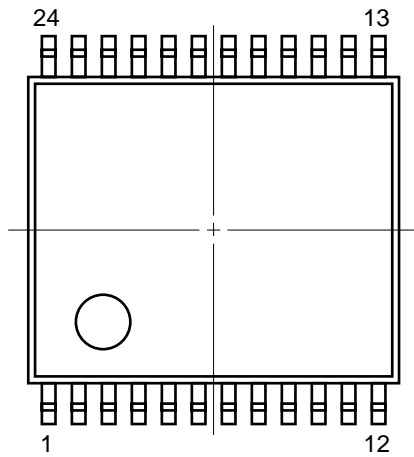
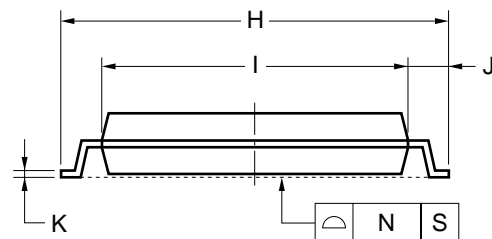
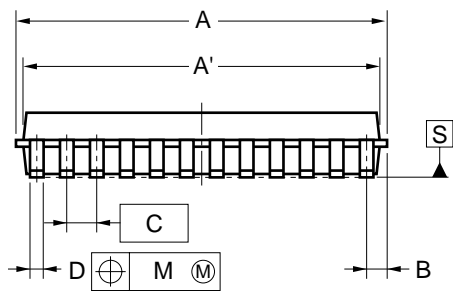
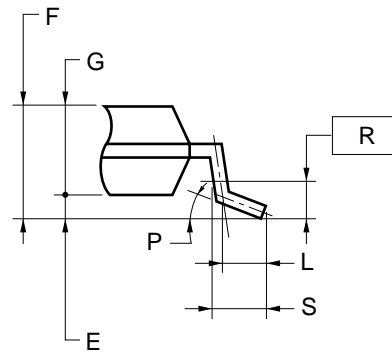


## 24-PIN PLASTIC TSSOP (5.72 mm (225))



detail of lead end



### NOTE

Each lead centerline is located within 0.10 mm of its true position (T.P.) at maximum material condition.

ITEM	MILLIMETERS
A	6.65±0.10
A'	6.5±0.1
B	0.575
C	0.5 (T.P.)
D	0.22±0.05
E	0.1±0.05
F	1.2 MAX.
G	1.0±0.05
H	6.4±0.1
I	4.4±0.1
J	1.0±0.1
K	0.17±0.025
L	0.5
M	0.10
N	0.08
P	3° <sup>+5°</sup> / <sub>-3°</sub>
R	0.25
S	0.6±0.15

**P24MA-50-6A5**