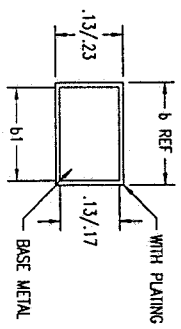
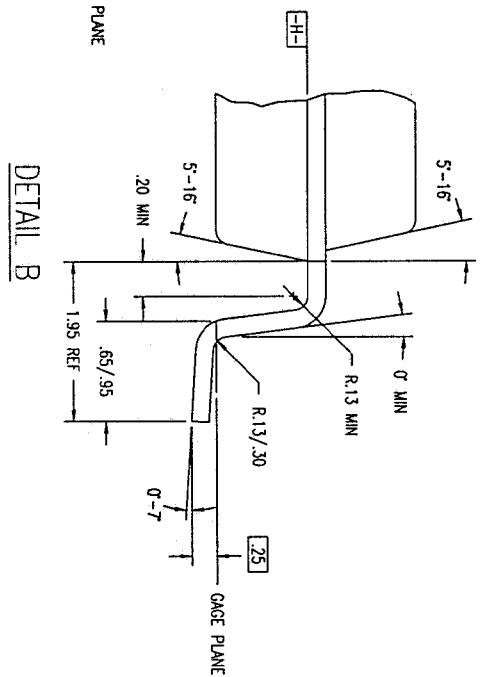
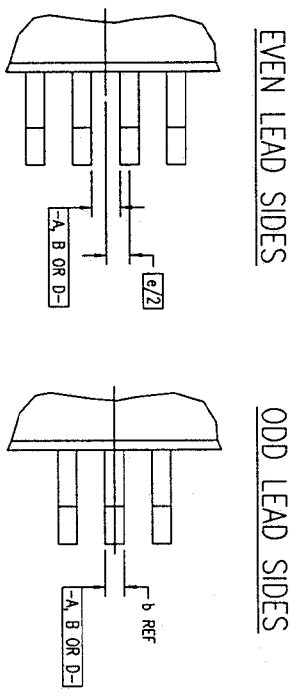
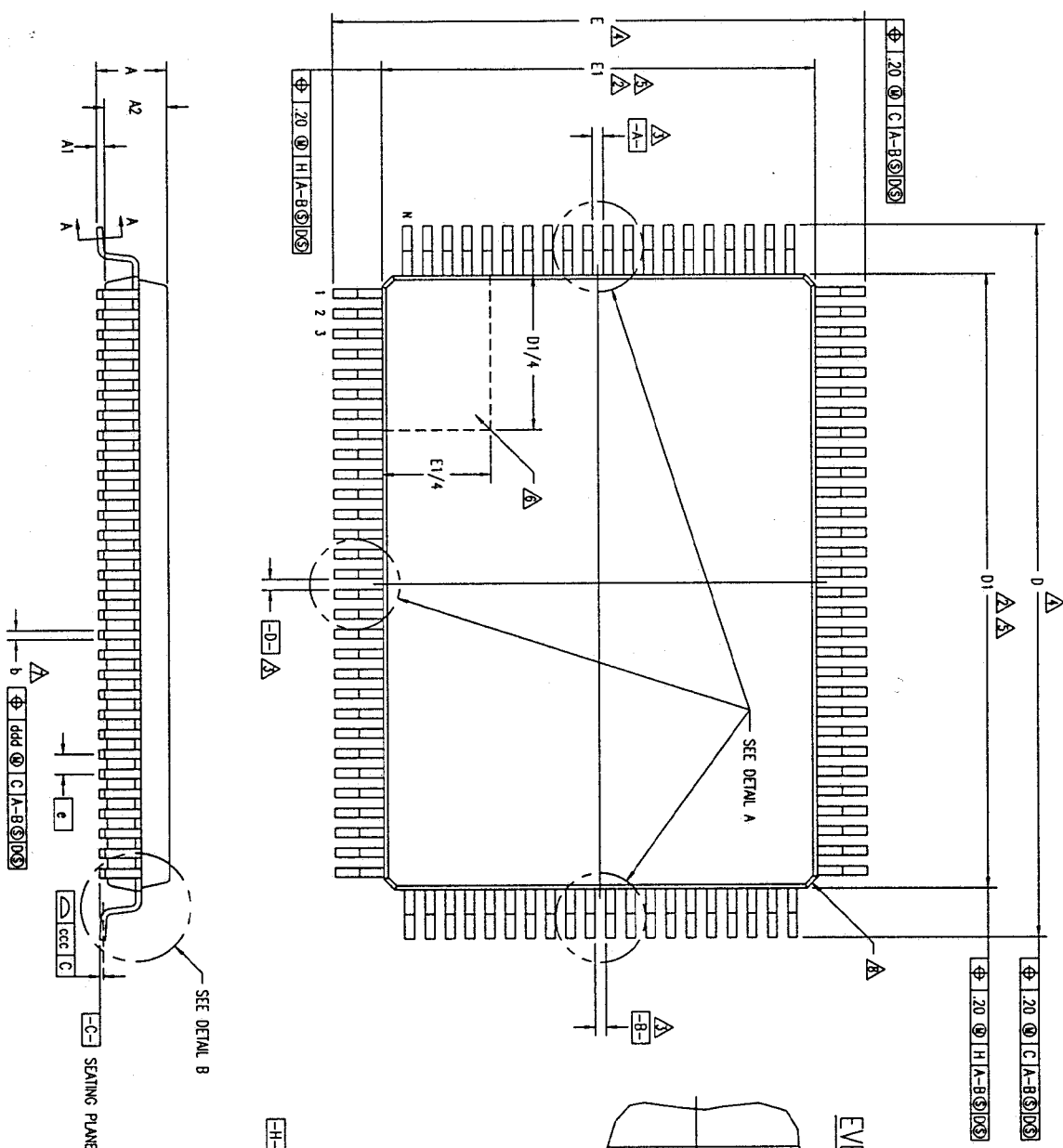


REVISIONS		DESCRIPTION	DATE	APPROVED
DCN	REV			
27848	05	REDRAW TO JEDEC FORMAT	02/15/95	<i>[Signature]</i>

MAY 04 1995



SECTION A-A

TOLERANCES UNLESS SPECIFIED		INTEGRATED DEVICE TECHNOLOGY, INC.	
DECIMAL	ANGULAR	2975 Slender Way, Santa Clara, CA 95054	PHONE: (408) 727-6116
XXXXX	±	FAK: (408) 492-8874	TRK: 910-358-2070
APPROVALS	DATE	TITLE	
DRAWN 44	12/15/88	PM PACKAGE OUTLINE (RECT)	
CHECKED		1.95/.25 MIN FORM	
SIZE	DRAWING No.	PSC-4028	
C		REV 05	
DO NOT SCALE DRAWING		SHEET 1 OF 2	

REVISIONS			DATE	APPROVED
DCN	REV	DESCRIPTION		
27648	05	REDRAW TO JEDEC FORMAT	03/15/95	<i>[Signature]</i>

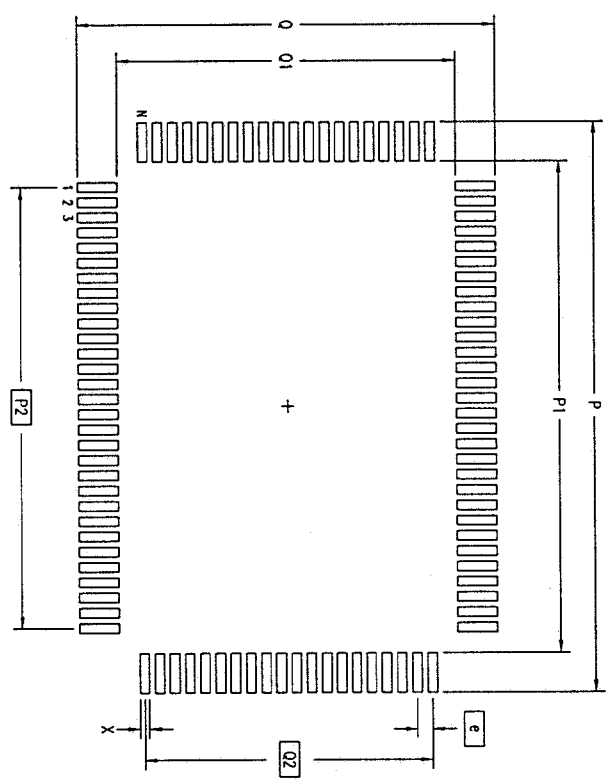
MAY 04 1995

LAND PATTERN DIMENSIONS

SYMBOL	JEDEC VARIATION			N D T E
	CC-1			
	MIN	NOM	MAX	
A	2.80	-	3.40	
A1	.25	-	-	
A2	2.55	2.80	3.05	
D	23.65	23.90	24.15	4
D1	19.90	20.00	20.10	5.2
E	17.65	17.90	18.15	4
E1	13.90	14.00	14.10	5.2
N		100		
ND		30		
NE		20		
e		.65 BSC		
b	.25	-	.38	7
b1	.25	-	.33	
ccc	-	-	.10	
ddd	-	-	.13	

NOTES:

- 1 ALL DIMENSIONING AND TOLERANCING CONFORM TO ANSI Y14.5M-1982
- △ TOP PACKAGE MAY BE SMALLER THAN BOTTOM PACKAGE BY .15 mm
- △ DATUMS [A-B] AND [D-] TO BE DETERMINED AT DATUM PLANE [H-]
- △ DIMENSIONS D AND E ARE TO BE DETERMINED AT SEATING PLANE [C-]
- △ DIMENSIONS D1 AND E1 DO NOT INCLUDE MOLD PROTRUSION. ALLOWABLE MOLD PROTRUSION IS .25 mm PER SIDE. D1 AND E1 ARE BODY SIZE DIMENSIONS INCLUDING MOLD MISMATCH
- △ DETAIL OF PIN 1 IDENTIFIER IS OPTIONAL BUT MUST BE LOCATED WITHIN THE ZONE INDICATED
- △ DIMENSION b DOES NOT INCLUDE DAMBAR PROTRUSION. ALLOWABLE DAMBAR PROTRUSION IS .08 mm IN EXCESS OF THE b DIMENSION AT MAXIMUM MATERIAL CONDITION. DAMBAR CANNOT BE LOCATED ON THE LOWER RADIUS OR THE FOOT.
- △ EXACT SHAPE OF EACH CORNER IS OPTIONAL
- △ THESE DIMENSIONS APPLY TO THE FLAT SECTION OF THE LEAD BETWEEN .10 AND .25 mm FROM THE LEAD TIP
- 10 ALL DIMENSIONS ARE IN MILLIMETERS
- 11 THIS OUTLINE CONFORMS TO JEDEC PUBLICATION 95 REGISTRATION MO-112, VARIATION CC-1



	MIN	MAX
P	24.50	24.70
P1	20.40	20.60
P2	18.85	BSC
Q	18.50	18.70
Q1	14.40	14.60
Q2	12.35	BSC
X	.30	.50
e	.65	BSC
N		100

TOLERANCES UNLESS SPECIFIED			Integrated Device Technology, Inc. 2975 Slender Way, Santa Clara, CA 95054 PHONE: (408) 727-6116 FAX: (408) 492-6674 TWK: 810-338-2070	
DECIMAL	±		APPROVALS	DATE
ANGULAR		DATE	12/15/89	
XXX		TITLE	PM PACKAGE OUTLINE (RECT)	
XXXX		DRAWN	AD	
XXXXX		CHECKED		
SIZE		DRAWING NO.	PSC-4028	
DO NOT SCALE DRAWING		REV	05	
		SHEET	2 OF 2	