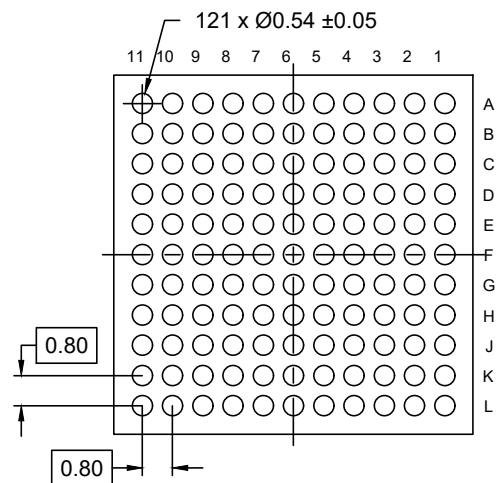
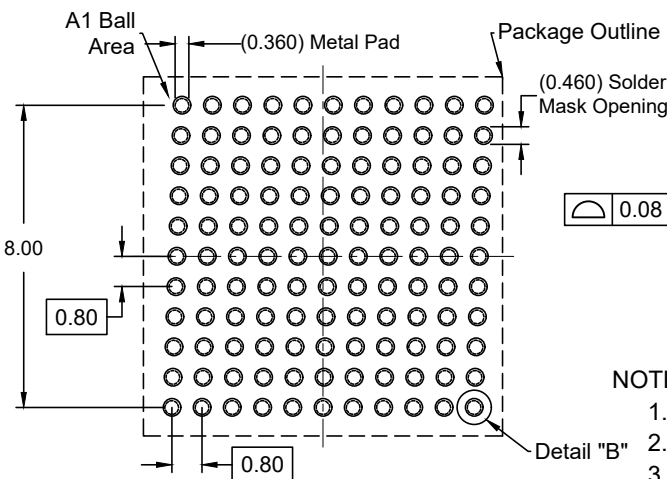


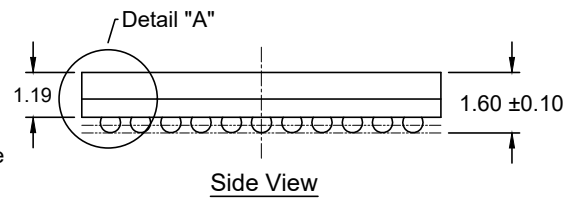
Top View



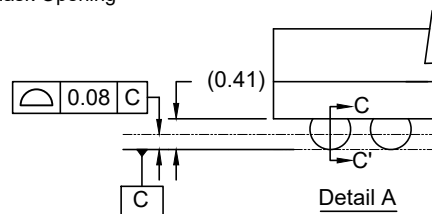
Bottom View



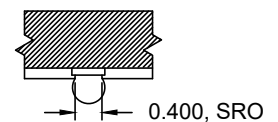
Recommended Land Pattern  
(PCB Top View, NSMD Design)



Side View



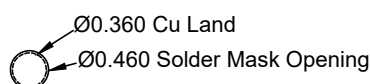
Detail A



Section C-C'

NOTES:

1. JEDEC compatible.
2. All dimensions are in mm and angles are in degrees.
3. Use  $\pm 0.05$  mm for the non-toleranced dimensions.
4. Numbers in ( ) are for references only.
5. Pre-reflow solderball diameter is  $\varnothing 0.5$  mm.



Detail B