


# Quick Start Guide

RL78/G22  
Fast Prototyping Board

## (1) Checking out the video guide

A video is available to help you get started with Fast Prototyping Board for RL78 Family.

The QR code for the video is at right. 

You can also check the board's full specifications on the Renesas Web site.

URL: [https://www.renesas.com/rl78g22\\_fpb](https://www.renesas.com/rl78g22_fpb)



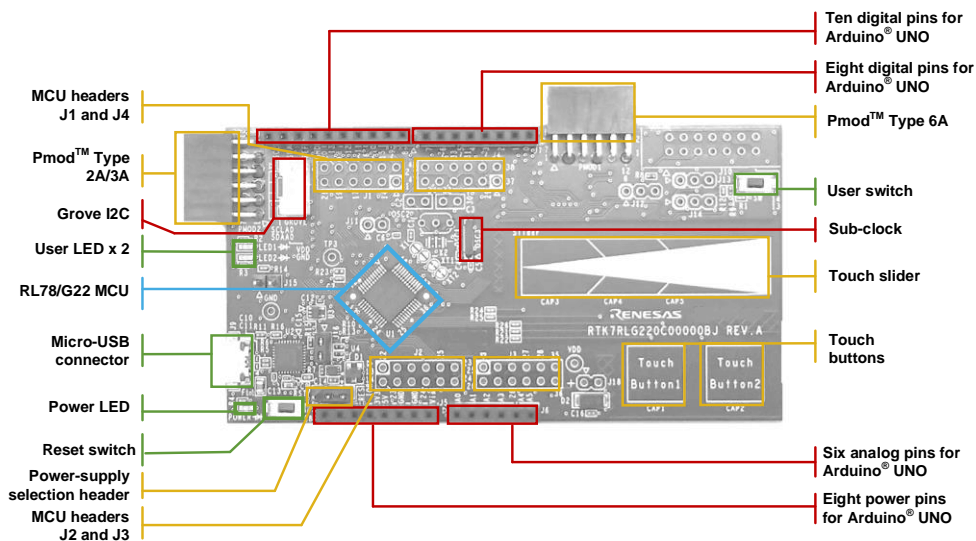
## (2) Package components

RL78/G22 Fast Prototyping Board (RTK7RLG220C00000BJ) and Quick Start Guide (this document)

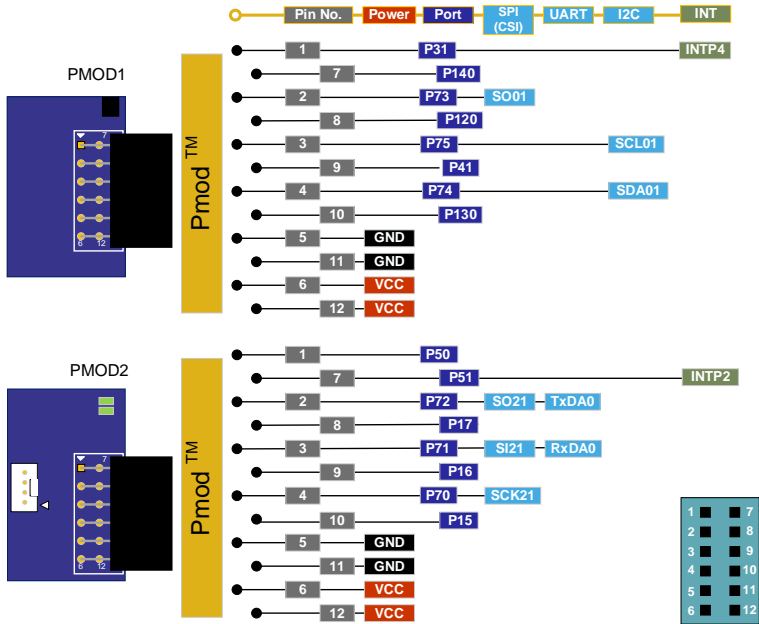
## (3) Table of board specifications

Item	Specification
Evaluation MCU RL78/G22	Part No.: R7F102GGE2DFB; package: 48-pin LQFP On-chip memory: 64-KB ROM, 4-KB RAM, 2-KB data flash memory
Push switches	Reset switch x 1, user switch x 1
LEDs	Power indicator: green x 1, user: green x 2
Capacitive touch	Buttons x 2, slider x 1
Pmod™ connectors	Connectors: Angle type, 12 pins x 2
Arduino® connectors	Connectors: 6 pins x 1, 8 pins x 2, 10 pins x 1 The interfaces are compatible with Arduino® UNO R3.
Grove connector	Interface for Grove modules I2C: x 1

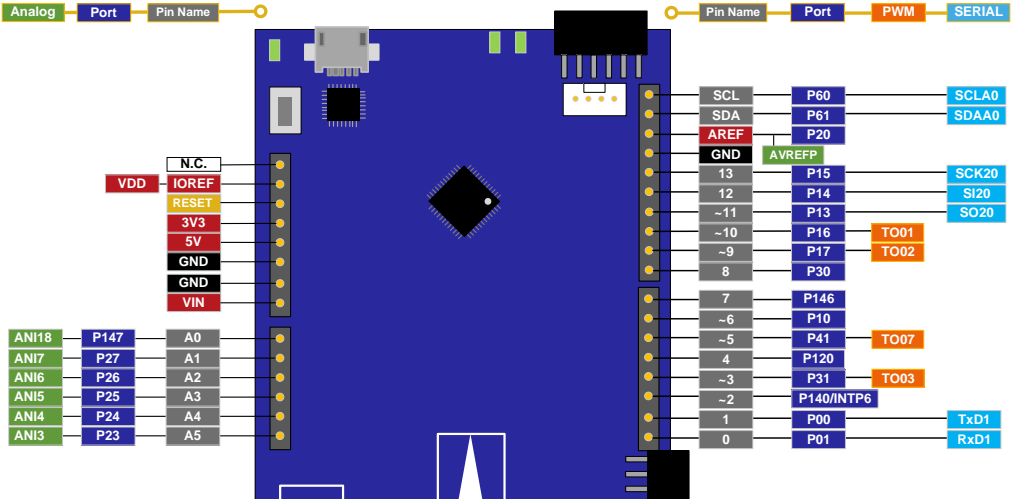
## (4) Parts layout



(5) Pmod™ interface



(6) Arduino™ interface



(7) Grove interface

Pin 1	P60	SCLA0
Pin 2	P61	SDAA0
Pin 3	-	VDD
Pin 4	-	VSS