

RENESAS TECHNICAL UPDATE

Nippon Bldg., 2-6-2, Ohte-machi, Chiyoda-ku, Tokyo 100-0004, Japan
Renesas Technology Corp.

Product Category	User Development Environment		Document No.	TN-CSX-067A/EA	Rev.	1.0
Title	Problem on the Integrated Development Environment (HEW3) (2)		Information Category	Usage Limitation		
Applicable Product	P0700CAS8-MWR	Lot No.	Reference Document	SuperH RISC engine High-performance Embedded Workshop 3 User's Manual Revision 1.0 REJ10B0025-0100H		
		Ver.8.0.00 Ver.8.0.01				

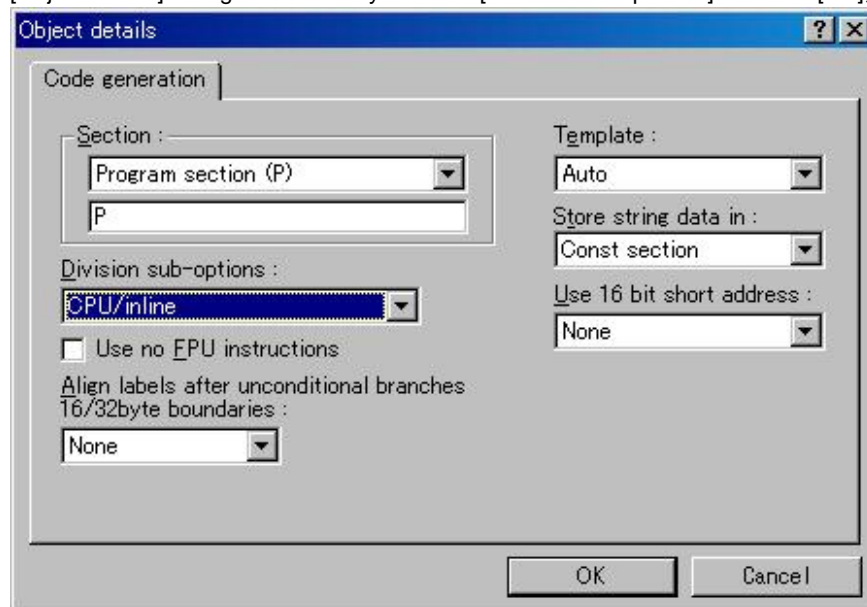
A problem with specification of options occurs while using this product. To specify options, follow the instruction below.

1. Options not Selectable

Selecting [Options] - [SuperH RISC engine Standard Toolchain...] opens the [SuperH RISC engine Standard Toolchain] dialog box. Options selected in this dialog box may be ignored (i.e. generates no character string to specify these options).

1.1 Division sub-options

Select the [C/C++] tab or the [Standard Library] tab. Then select category [Object] and click the [Details...] button to open the [Object details] dialog box. Even If you select [Division sub-options :] and click [OK], this specification may be ignored.



To specify [Division sub-options], select category [Other] in the [SuperH RISC engine Standard Toolchain] dialog box and enter the following character strings in [User defined options :].

Division sub-options	Character string in [User defined options :]
Default	-division=cpu
CPU/inline	-division=cpu=inline
CPU/runtime	-division=cpu=runtime

