

[Notes]

R20TS1067ES0100

Rev.1.00

Sep. 20, 2024

e² studio Smart Configurator Plug-in,
Smart Configurator for RX

Outline

When using the products in the title, note the following points.

1. Notes on using Continuous Scan Mode S12AD component

1. Notes on using Continuous Scan Mode S12AD component

1.1 Applicable Products

- e² studio 2020-04 (Smart Configurator Plug-in V2.5.0) or later
- Smart Configurator for RX V2.5.0 or later

1.2 Applicable Devices

RX family: RX651, RX65N

1.3 Details

Error in reopening the Smart Configurator project under the conditions specified in section 1.4.

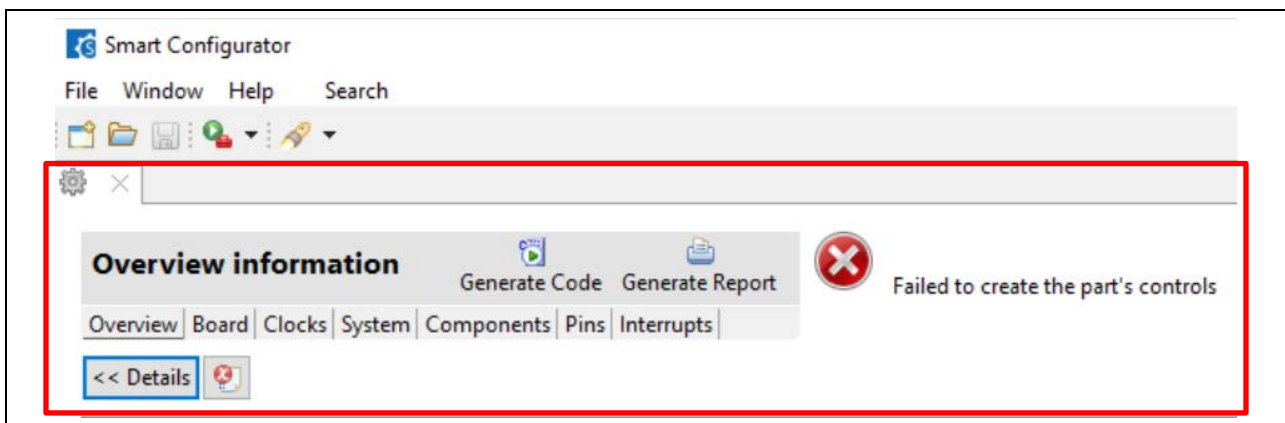


Figure 1. Error when reopening project

1.4 Conditions

The issue occurs when a Smart Configurator project is configured with the following conditions:

- Create an RX651 or RX65N project
- Add Continuous Scan Mode S12AD component with Channel 0
- Enable self-diagnostic setting by setting the Mode
- Save and close Smart Configurator project
- Reopen Smart Configurator project

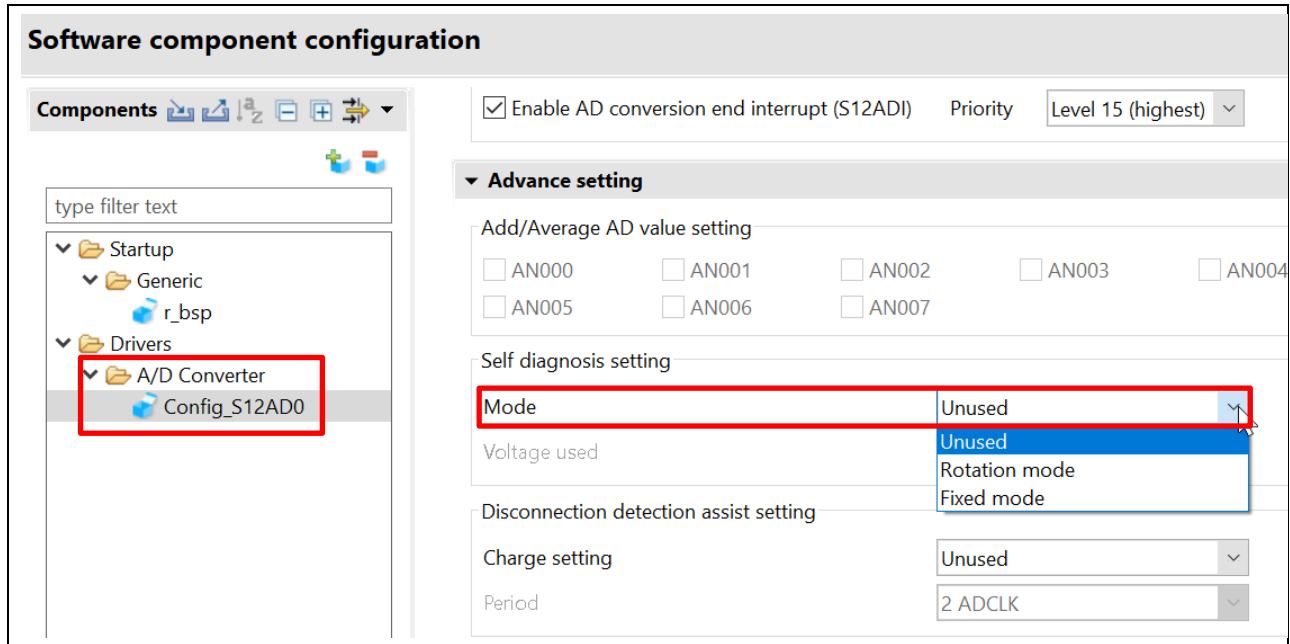


Figure 2. Change Mode setting of S12AD0 configuration

1.5 Workaround

This issue does not occur when using S12AD Channel 1. If you need to enable the self-diagnostic setting by configuring the Mode, it is recommended to use Channel 1 instead of Channel 0.

1.6 Schedule for Fixing the Problem

This problem will be fixed in the following product versions. (Scheduled to be released in Oct. 2024.)

- e² studio 2024-10 (Smart Configurator Plug-in V2.23.0)
- Smart Configurator for RX V2.23.0

Revision History

Rev.	Date	Description	
		Page	Summary
1.00	Sep.20.24	-	First edition issued

Renesas Electronics has used reasonable care in preparing the information included in this document, but Renesas Electronics does not warrant that such information is error free. Renesas Electronics assumes no liability whatsoever for any damages incurred by you resulting from errors in or omissions from the information included herein.

The past news contents have been based on information at the time of publication. Now changed or invalid information may be included.

The URLs in the Tool News also may be subject to change or become invalid without prior notice.

Corporate Headquarters

TOYOSU FORESIA, 3-2-24 Toyosu,
Koto-ku, Tokyo 135-0061, Japan
www.renesas.com

Trademarks

Renesas and the Renesas logo are trademarks of Renesas Electronics Corporation. All trademarks and registered trademarks are the property of their respective owners.

Contact information

For further information on a product, technology, the most up-to-date version of a document, or your nearest sales office, please visit:
www.renesas.com/contact/