

[Upgrade to revision]

R20TS0561EJ0100

Rev.1.00

Apr. 16, 2020

QE for Display[RX]V1.1.0, QE for Display[RZ]V3.1.1:

Development Assistance Tool for Display,

QE for Camera[RZ]V1.1.1: Development Assistance Tool for Camera

Outline

The products in the title have been updated as follows.

- (1) QE for Display[RX]: Development Assistance Tool for Display: V1.0.0 to V1.1.0
- (2) QE for Display[RZ]: Development Assistance Tool for Display: V3.1.0 to V3.1.1
- (3) QE for Camera[RZ]: Development Assistance Tool for Camera: V1.1.0 to V1.1.1

1. Products and Versions to Be Updated

- QE for Display[RX]: Development Assistance Tool for Display V1.0.0
- QE for Display[RZ]: Development Assistance Tool for Display V3.1.0 and earlier versions
- QE for Camera[RZ]: Development Assistance Tool for Camera: V1.1.0 and earlier versions

2. Description of the Update

The main features of the update are described in the following sections. Refer to the following release note for more details.

- QE for Display[RX]: Development Assistance Tool for Display
QE for Display[RX] V1.1.0 Release Note
<https://www.renesas.com/search/keyword-search.html#genre=document&q=r20ut4685>
- QE for Camera[RZ]: Development Assistance Tool for Camera, QE for Display[RZ]: Development Assistance Tool for Display
QE for Camera[RZ] V1.1.1, QE for Display[RZ] V3.1.1 Release Note
<https://www.renesas.com/search/keyword-search.html#genre=document&q=r20ut4799>

2.1 End of Support for Windows 7

QE for Display[RX], QE for Display[RZ], and QE for Camera[RZ] no longer support Windows 7 as support of Windows 7 by Microsoft ended.

For operating environments, refer to the URL below.

<https://www.renesas.com/system-requirements>

2.2 Addition of Supported Devices

Devices supported by QE for Display[RX]: Development Assistance Tool for Display, have been added for the following groups:

- RX66N, RX72M, and RX72N groups

2.3 Feature Improvements

➤ Enhancement of Display Types

QE for Display[RX] now supports display types 1 and 2. You can now select a display type suitable for the specifications of your LCD panel for adjustment.

* Display types 1 and 2 are QE-specific names which represent the control signals used for the LCD panel display. Select a type appropriate for the LCD panel in use.

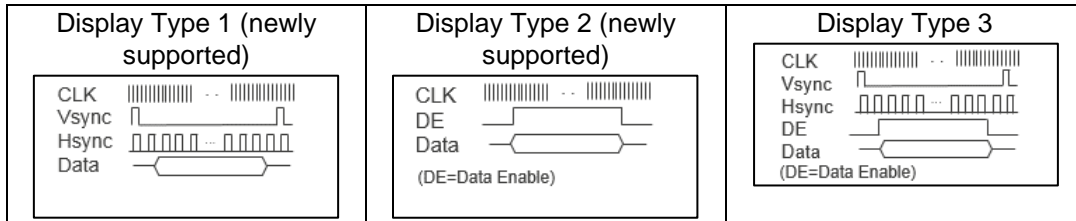


Figure 1 Available Display Types in QE for Display

➤ Improvement of the [Edit Custom Display Data] Dialog Box

The required LCD panel parameter items are now highlighted in the [Edit Custom Display Data] dialog box for better visibility.

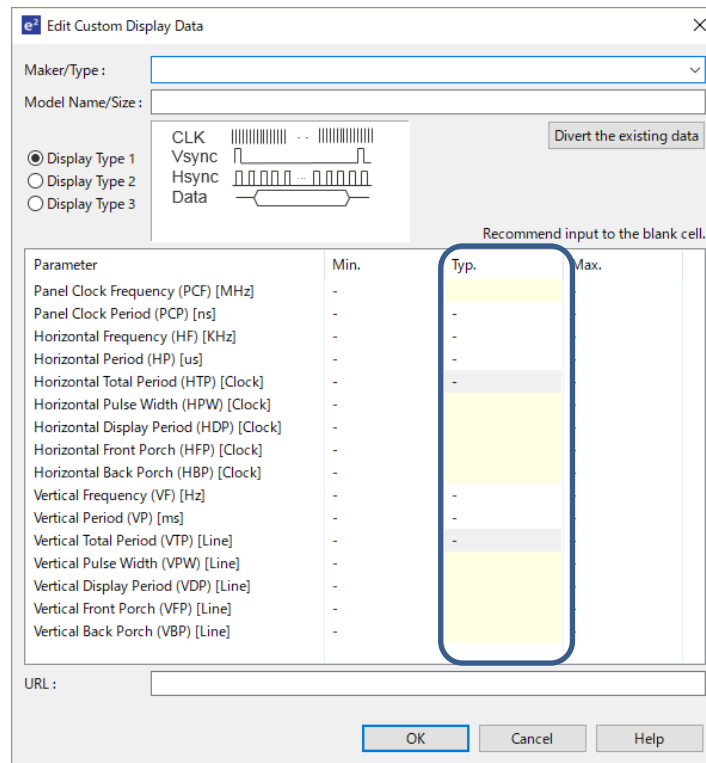


Figure 2 Specification of LCD Panel Parameters in the [Edit Custom Display Data] Dialog Box

3. Updating Your Product

Update your program in either of the following methods.

3.1 Updating from the e² studio Installer

For how to update e² studio, refer to “3. Updating Your Product” in RENESAS TOOL NEWS Document number R20TS0558EJ0100. (Scheduled to be released on April 20.)

<https://www.renesas.com/search/keyword-search.html#genre=document&q=r20ts0558>

In the [Additional Software] pane of the e² studio installation wizard, select QE for Display or QE for Camera.

Note: This step is disabled in situations where an internet connection is not available. In that case, perform an update following the instructions in 3.2.

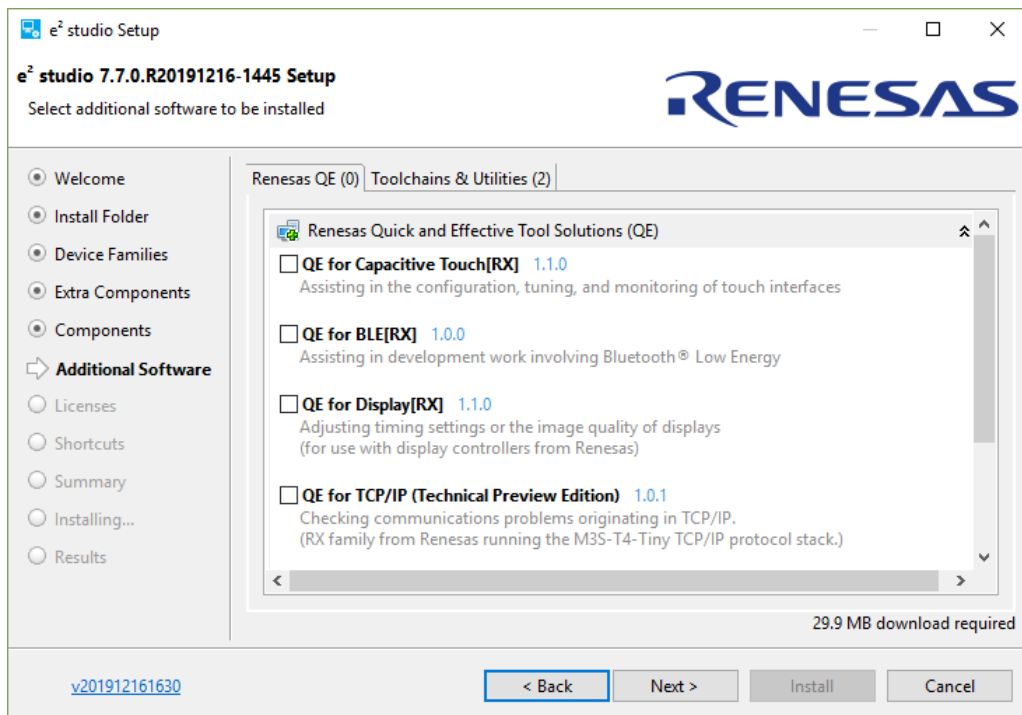


Figure 3 Updating from the e² studio Installer

3.2 Using the QE Installer

Download the installer from the URL below and proceed with installation.

- QE for Display[RX]: Development Assistance Tool for Display

<https://www.renesas.com/qe-display#downloads>

QE for Display Package V1.3.0

This product is a display solution package which includes the following products:

- RX version: QE for Display[RX] V1.1.0
- RZ version: QE for Display[RZ] V3.1.1
 - * QE for Camera[RZ]: Development Assistance Tool for Camera is also installed.

- QE for Camera: Development Assistance Tool for Camera

<https://www.renesas.com/qe-camera#downloads>

QE for Camera Package V1.1.1

This product is a camera solution package which includes the following product:

- RZ version: QE for Camera[RZ] V1.1.1
 - * QE for Display[RZ]: Development Assistance Tool for Display is also installed.

Use the following procedure to install the product.

- (1) Activate e² studio.
- (2) Click [Help], and then click the [Install New Software...] menu to open the [Install] dialog box.
- (3) Click the [Add...] button to open the [Add Repository] dialog box.
- (4) Click the [Archive...] button, select the installation file (zip file) in the opened file selection dialog box, and then click the [Open] button.
- (5) Click the [OK] button in the [Add Repository] dialog box.
- (6) Expand the [Renesas QE] item shown in the [Install] dialog box, select the [Renesas QE for Camera/Display[RZ]] check box, and then click the [Next>] button.
 - * You can check off the [Contact all update sites during install to find required software] check box to shorten the installation time.
- (7) Confirm that the installation target is correct, and then click the [Next>] button.
- (8) After checking the license, select the [I agree to the terms of the license agreements] radio button, and then click the [Finish] button.
- (9) When the dialog box for selecting a trusted certificate appears, check the displayed certificate, and then click the [OK] button to continue installation.
- (10) Restart e² studio according to the instructions on the screen.
- (11) Start this product from the [Renesas Views] - [Renesas QE] menu of e² studio.

For details about how to use this product, refer to the QE items from the [Help] menu of e² studio.

Revision History

Rev.	Date	Description	
		Page	Summary
1.00	Apr.16.20	-	First edition issued

Renesas Electronics has used reasonable care in preparing the information included in this document, but Renesas Electronics does not warrant that such information is error free. Renesas Electronics assumes no liability whatsoever for any damages incurred by you resulting from errors in or omissions from the information included herein.

The past news contents have been based on information at the time of publication. Now changed or invalid information may be included.

The URLs in the Tool News also may be subject to change or become invalid without prior notice.

Corporate Headquarters

TOYOSU FORESIA, 3-2-24 Toyosu,
Koto-ku, Tokyo 135-0061, Japan

www.renesas.com

Contact information

For further information on a product, technology, the most up-to-date version of a document, or your nearest sales office, please visit:

www.renesas.com/contact/

Trademarks

Renesas and the Renesas logo are trademarks of Renesas Electronics Corporation. All trademarks and registered trademarks are the property of their respective owners.