

[Upgrade to version]

R20TS0606EJ0101

QE for Display[RX]V2.0.0:

Rev.1.01

Aug. 01, 2020

Development Assistance Tool for Display

Outline

The product in the title has been upgraded as follows.

- (1) QE for Display[RX]: Development Assistance Tool for Display: V1.1.0 to V2.0.0

1. Products and Versions to Be Updated

- QE for Display[RX]: Development Assistance Tool for Display V1.1.0 or earlier

2. Description of the Version Upgrade

The main features of the upgrade are described in the following sections. Refer to the following release note for details.

- QE for Display[RX]: Development Assistance Tool for Display
QE for Display[RX] V2.0.0 Release Note (Scheduled to be released on August 5.)

<https://www.renesas.com/search/keyword-search.html#genre=document&q=r20t4841>

For the list of supported devices by QE for Display[RX], see the URL below.

<https://www.renesas.com/qe-display>

2.1 Improvements to Functionality

- Enhanced integration with emWin from SEGGER Microcontroller
(1) The workflow view that makes a series of configurations straightforward

You can now include an Segger emWin using QE for Display[RX].

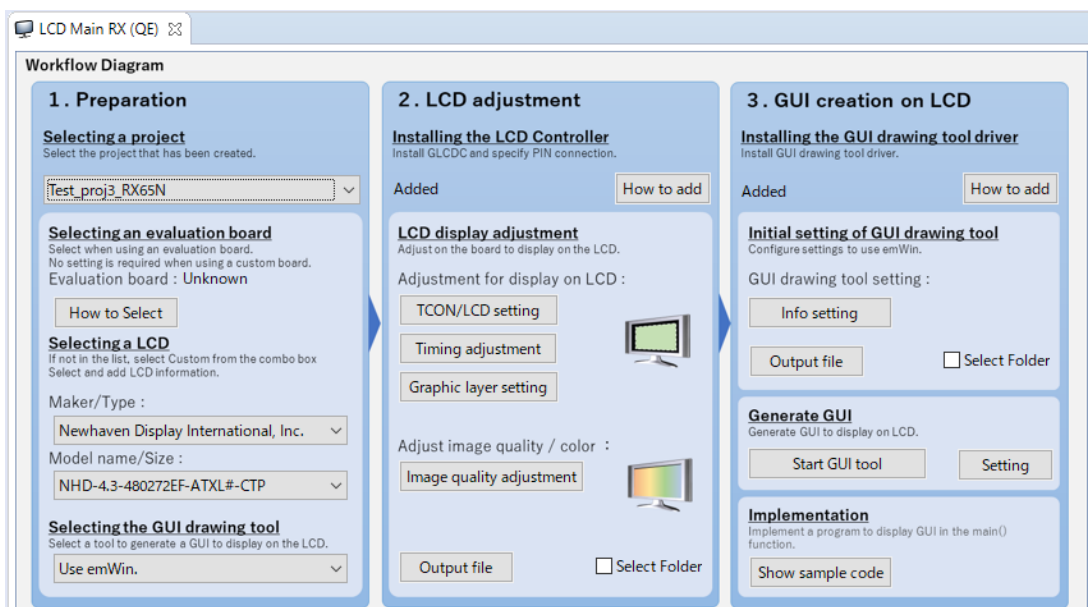


Figure 1. [Workflow Diagram] of QE for Display[RX]

(2) Free GUI library for the RX family

The GUI library is provided as a FIT module, so it can be easily integrated into a user program. For details about Firmware Integration Technology (FIT), refer to the following URL:

<https://www.renesas.com/fit>

- r_emwin_rx v6.10
- 2D graphic engine driver r_drw2d_rx v1.10
- RX family graphic LCD controller module FIT r_gldcd_rx v1.40

(3) Starting Segger emWin from QE for Display

You can now directly start Segger emWin (AppWizard) from QE for Display. You can also configure emWin by using the QE for display GUI.

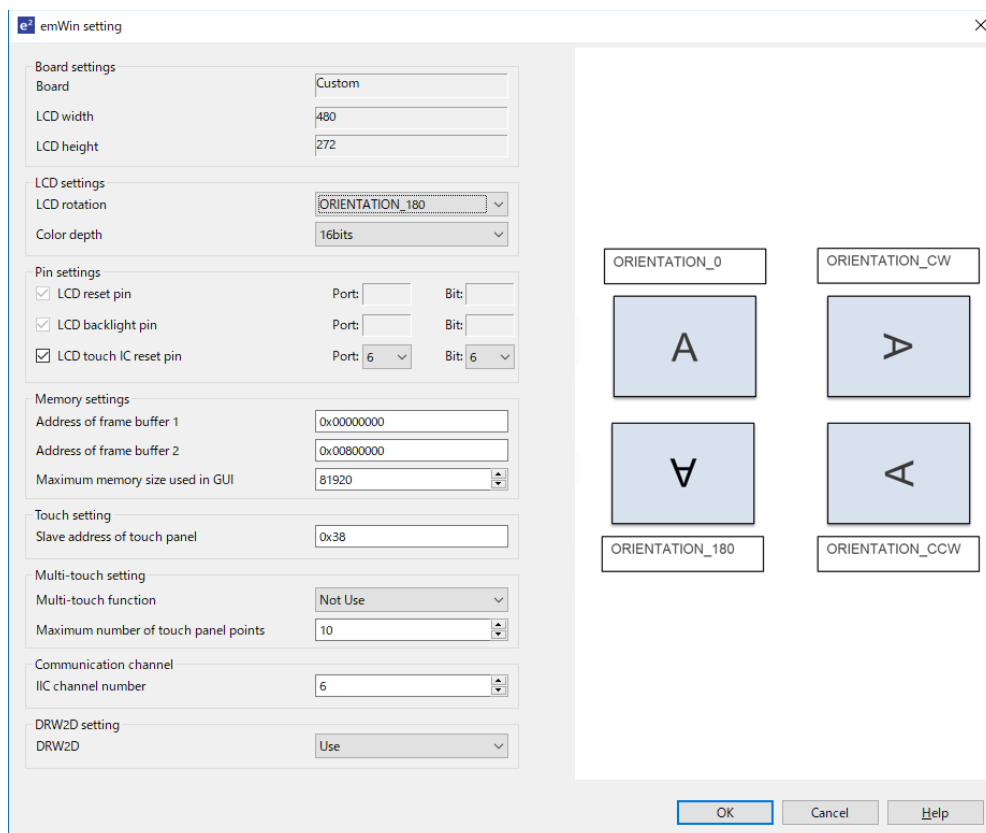


Figure 2. emWin setting dialog

(4) Easier system configuration and integration

The QE for Display adjustment results (for example, timing and image quality) can be reflected to a FIT module added to a user project, reducing the need for merging them to the user project.

The Segger emWin is a GUI platform that can be used to create flexible and sophisticated graphics. It can be used to create an extremely advanced, high quality, and interactive graphical interface efficiently.

For details about and to download the Segger emWin package, refer to the following URL:

<https://www.segger.com/products/user-interface/emwin/add-ons/emwin-support-renesas-rx-mcu/>

➤ Improvement of the display adjustment function

Graphic layers in the Graphic LCD Controller (GLCDC) can now be configured through the GUI.

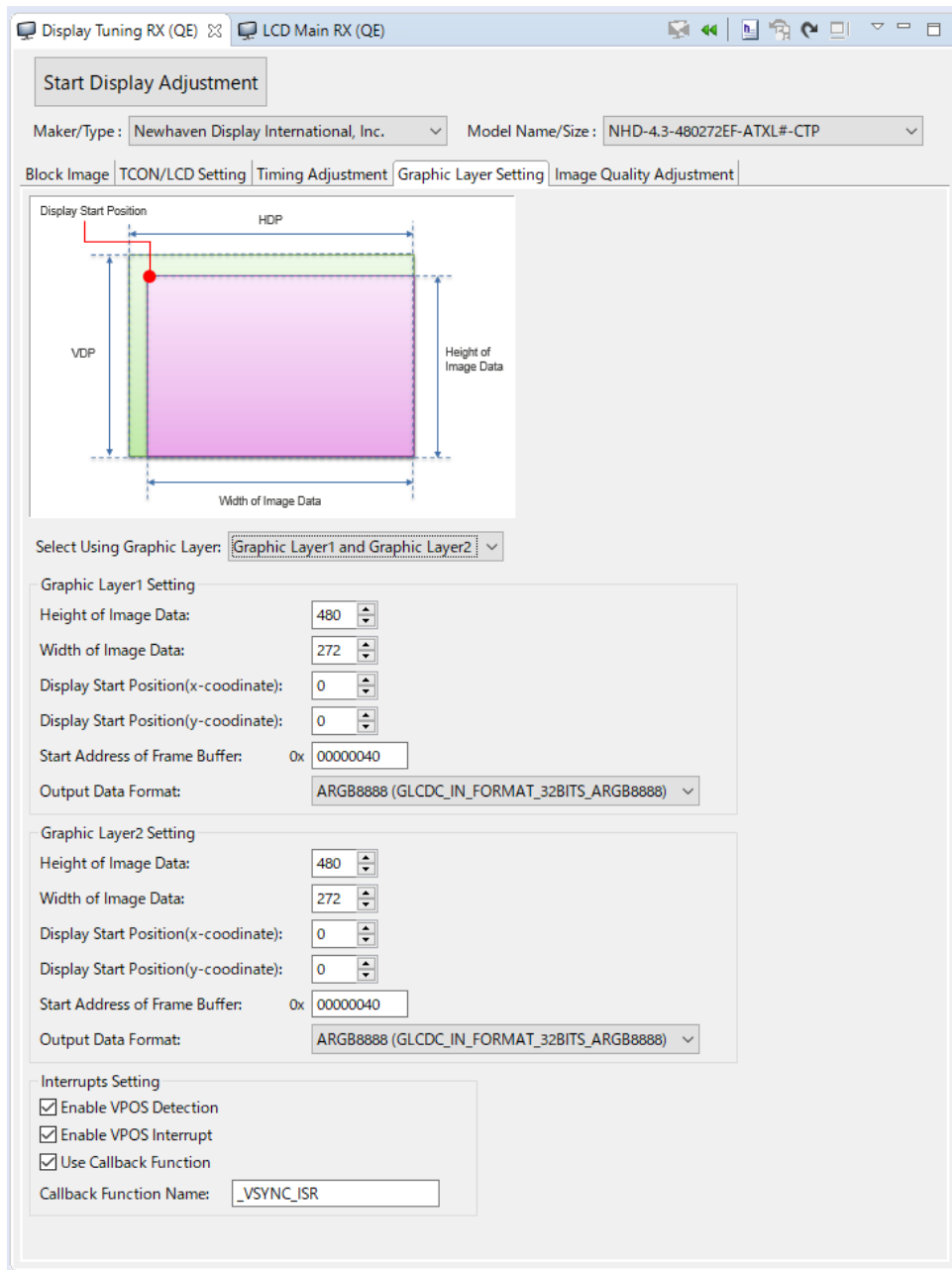


Figure 3. [Display Tuning RX (QE)] view

3. Updating Your Product

Update your program in either of the following methods.

3.1 Updating from the e² studio Installer

For how to update e² studio, refer to “3.Updating Your Product” in RENESAS TOOL NEWS Document number R20TS0592EJ0100.

<https://www.renesas.com/search/keyword-search.html#genre=document&q=r20ts0592>

[Upgraded to version] e² studio 2020-07

In the [Additional Software] pane of the e² studio installation wizard, select QE for Display.

Note 1: This step is disabled in situations where an internet connection is not available. In that case, perform an update following the instructions in 3.2.

Note 2: Use e² studio V7.8 or e² studio 2020-07.

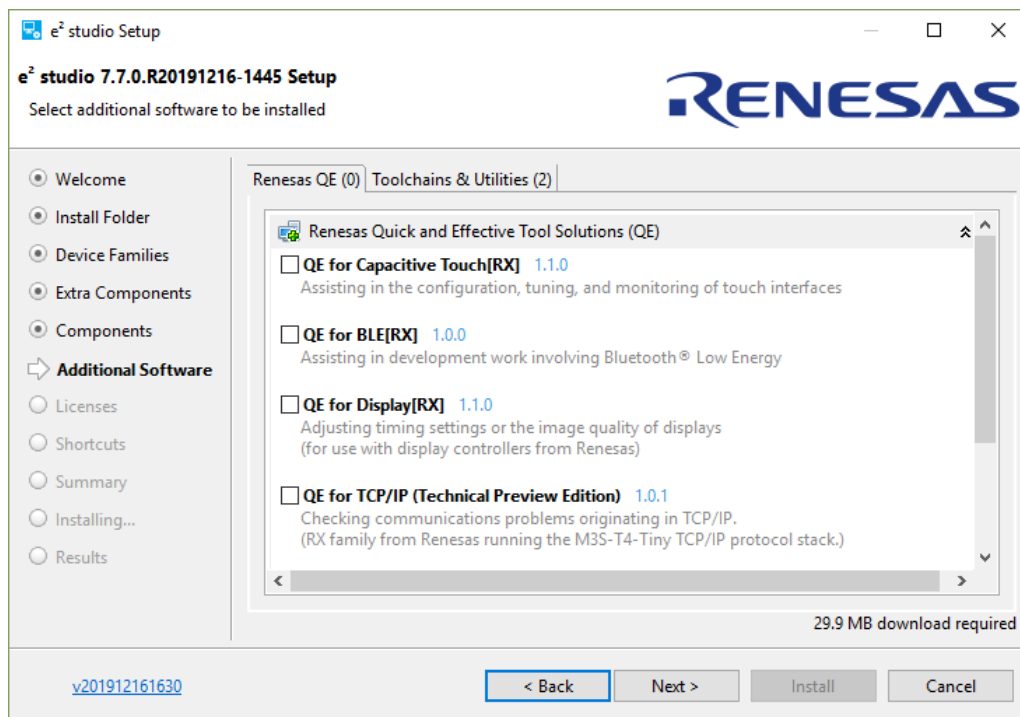


Figure 4 Updating from the e² studio Installer

3.2 Using the QE Installer

Download the installer from the URL below and proceed with the installation.

(Download will be available as of August 5.)

- QE for Display: Development Assistance Tool for Display

<https://www.renesas.com/qe-display#downloads>

QE for Display Package V2.0.0

Use the following procedure to install the product.

- (1) Activate e² studio.
- (2) Click [Help], and then click the [Install New Software...] menu to open the [Install] dialog box.
- (3) Click the [Add...] button to open the [Add Repository] dialog box.
- (4) Click the [Archive...] button, select the installation file (zip file) in the opened file selection dialog box, and then click the [Open] button.
- (5) Click the [OK] button in the [Add Repository] dialog box.
- (6) Expand the [Renesas QE] item shown in the [Install] dialog box, select the [Renesas QE for Display[RX] check box, and then click the [Next>] button.
* You can check off the [Contact all update sites during install to find required software] check box to shorten the installation time.
- (7) Confirm that the installation target is correct, and then click the [Next>] button.
- (8) After checking the license, select the [I agree to the terms of the license agreements] radio button, and then click the [Finish] button.
- (9) When the dialog box for selecting a trusted certificate appears, check the displayed certificate, and then click the [OK] button to continue installation.
- (10) Restart e² studio according to the instructions on the screen.
- (11) Start this product from the [Renesas Views] - [Renesas QE] menu of e² studio.
For details about how to use this product, refer to the QE items from the [Help] menu of e² studio.

Revision History

Rev.	Date	Description	
		Page	Summary
1.00	Aug.01.20	-	First edition issued
1.01	Aug.17.20	1, 2	Description corrected

Renesas Electronics has used reasonable care in preparing the information included in this document, but Renesas Electronics does not warrant that such information is error free. Renesas Electronics assumes no liability whatsoever for any damages incurred by you resulting from errors in or omissions from the information included herein.

The past news contents have been based on information at the time of publication. Now changed or invalid information may be included.

The URL in the Tool News also may be subject to change or become invalid without prior notice.

Corporate Headquarters

TOYOSU FORESIA, 3- 2- 24 Toyosu,
Koto-ku, Tokyo 135- 0061, Japan

www.renesas.com

Contact information

For further information on a product, technology, the most up-to-date version of a document, or your nearest sales office, please visit:

www.renesas.com/contact/

Trademarks

Renesas and the Renesas logo are trademarks of Renesas Electronics Corporation. All trademarks and registered trademarks are the property of their respective owners.