

## Functional Description

This application note is intended to supplement IDT's Evaluation Board User's Guide. The Users guide describes the Evaluation Board System and use of its software. The system includes one IDT821064 evaluation board, one UniSLIC14 evaluation board and control software IDT821064.exe. For discussion purposes, the IDT821064 evaluation board will be referred to as the Mother Board and the UniSLIC14 evaluation board will be referred to as the Daughter Board.

A good understanding of the material in the Users Guide is a prerequisite to this application note. For a detailed engineering analysis of the reference design using the UniSLIC14 and IDT821064, see application note AN9999.

With this system, the user can configure a channel to channel conversation and perform various tests on the system using a Wandel and Golterman (W&G) PCM4.

The IDT821064 Evaluation Board System can be configured in two modes of operation via JP1, JP2 & JP3 on the mother board.

- **Emulation Mode**, Emulation Mode gets its name from the evaluation board's ability to emulate a far end callee (or caller) telephone conversation as a stand alone unit. In this mode the DC performance of the SLIC (logic state, Tip & Ring voltage levels, on hook & off hook detection) and channel to channel conversation is easily evaluated using the on-board clock circuit of the Mother Board.

### Jumper Configuration:

JP1 jumper IN (shorting DX/DR)  
JP2 jumper IN (providing power to the on board oscillator)  
JP3 IN (connecting INTERNAL clock to board)

- **Test Mode**, Test Mode gets its name from the evaluation board's ability to test the performance of the system using a PCM4. In this mode the AC performance of the half channel (D/A, A/D, D/D) can be evaluated

### Jumper Configuration:

JP1 jumper OUT  
JP2 jumper OUT  
JP3 IN (connecting EXTERNAL clock to board)

This application note will first evaluate the DC performance of the system by configuring the Jumpers in the Emulation Mode. Figure 2 shows the required connection between the Evaluation Board, PC, PCM4 tester and Power Supplies. Proper connection should be established before running the software.

If the user prefers to evaluate the AC performance first, then along with the proper connections (Figure 2) and jumpers positioned for the test mode, the user needs to insure the clock of the PCM4 is connected before running the software.

## Verifying Basic Operation

The operation of the Mother & Daughter Boards can be verified by performing the following tests:

1. Normal Loop Feed Verification
  - Tip & Ring Voltage Forward Active State, On Hook
  - Tip & Ring Voltage Forward Active State, Off Hook
  - Tip & Ring Voltage Reverse Active State, On Hook
  - Tip & Ring Voltage Reverse Active State, Off Hook
2. Loop Supervisory Detection
  - On Hook & Off Hook
  - Tip Open State, Ground Key Test
  - 2-wire Loopback
  - Operation of the ISL5571A Latch
3. Ringing Verification and operation of the ISL5571A Access Switch.
4. Programming of Coefficients
5. Emulation of Far End Telephone Conversation
6. Gain Verification
  - Total System Gain (Digital to Digital)
7. Variable Gain/Frequency
  - Receive Gain (Digital to Analog)
  - Transmit Gain (Analog to Digital)
8. Total Distortion
  - Receive Gain (Digital to Analog)
  - Transmit Gain (Analog to Digital)

## UniSLIC14 Daughter Board

The HC5514XEVAL2 evaluation board, due to the common pinout of the UniSLIC14 family, is capable of evaluating the performance of the following parts in the UniSLIC14 family (HC55120, HC55121, HC55130, HC55140, HC55142 and HC55150).

The sample provided with this board (HC55142) will meet or exceed the electrical performance for all members of the family listed above. The evaluation board is optimized to match either a  $600\Omega$  or a  $200\Omega + 680\Omega || 0.1\mu\text{F}$  line impedances, have a minimum loop current of 20mA, a maximum loop current of 30mA, on-hook transmission of  $0.775V_{\text{RMS}}$ , off-hook voice transmission of  $3.2V_{\text{PEAK}}$ , and a maximum loop resistance of  $1777\Omega$ .

For evaluation of the programmability of the HC5514 family, reference the data sheet for calculation of external components. An Excel spread sheet can be downloaded from the web for easy calculation of external components ([www.intersil.com/telecom/unislic14.xls](http://www.intersil.com/telecom/unislic14.xls)).

The daughter board is a dual channel board that enables testing between adjacent channels (CH1 to CH2 and CH3 to CH4). An additional daughter board can be obtained to enable testing between all channels. Reference the application note

AN9999 for calculation of external components and programming coefficients.

Programming of the logic state of the SLIC, loop supervisory detection, time slot allocation, coefficients, tone/ teletax signals are all controlled via software using the GCI screen (Figure 3).

### IDT821064 Mother Board

The IDT821064 Mother Board provides a way to evaluate the operation of IDT's IDT821064 and Intersil's UniSLIC14 family of SLICs. The programming interface illustrated in this application note is the General Communications Interface (GCI). Figure 1 shows the IDT821064 mother board component locations. The location of jumpers JP1, JP2, and JP3 are highlighted with arrows. JP1 is used to short the DX and DR signals from the PCM4 to prevent interference when Emulation Mode testing is performed. JP2 connects power to the on-board clock. This enables setup of the software without having to use the clock from the PCM4. JP3 connects either the on-board clock or the clock from the PCM4. Proper operation of the software requires this clock signal.

### Getting Started

The following steps will configure the Mother Board for testing in either the Emulation Mode or the Test Mode.

1. Connect IDT821064, UniSLIC14 and PCM4 as shown in Figure 2. Note: The Daughter Board gets its power from the Mother Board.
2. Set the General Parameters of the PCM4 as shown in Table 3 (see Test #6).
3. Once power is applied and the appropriate clock is supplied to the Mother Board (i.e internal clock for Emulation Mode, or PCM4 clock for Test Mode), PRESS the reset button. The LED will flash and then remain on. This will synchronize the clock and enable software control from the PC.
4. Initialize the software by clicking on IDT821064.exe and select the desired Operating Mode (GCI), COM Port and SLIC from the Mode and Port selection screen then click OK.
5. The GCI Mode screen will then appear (Figure 3). All programming of the channels and monitoring of SLIC status are performed using this screen.
6. From GCI Software screen, select Channel 1 in the left shaded area.
7. From GCI Software screen, select Global operation in the left shaded area. Accept defaults or set to your preferences and click the Write button.
8. From GCI Software screen, click on the Auto Detect Enable box. This will enable the CODEC to detect the status of the SLIC. Detection will be in the form of the receiver next to the channel indicator, left shaded area, being one of the 4 indicators located at the bottom of the shaded area in the Legend (Active, Ring, In Use, Power Off). The Auto Detect Enable box will also activate the I/O Pin Status of the SLICs SHD pin via SI1 and GKD pin via SI2. A red color signifies a logic one and green color a logic zero.

9. From GCI Software screen, clicking on the Broadcast Mode will enable the user to configure multi-channels at the same time.
10. From GCI Software screen, Select: Active F, Power On and click the Write button. **The SLIC is now ready to be tested.**

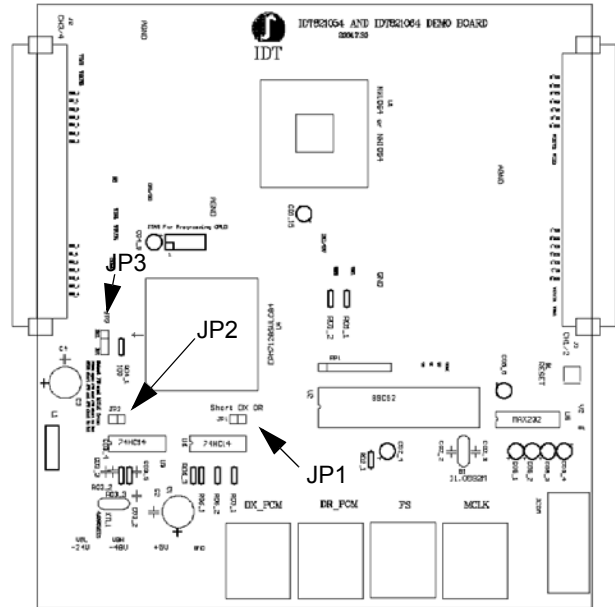


FIGURE 1. IDT821064 MOTHER BOARD COMPONENT LOCATION

### Test # 1 Normal Loop Feed Verification

This test verifies the correct tip and ring voltages in both on-hook and off-hook forward active and reverse active states. Loop current and ground key detect are also verified via the software GCI screen.

### Discussion

The HC55142 is designed to have its most positive 2-wire terminal (tip in the forward active state and ring in the reverse active state) fixed at a set voltage. This set voltage depends upon the required overheads for the application. The most negative 2-wire terminals voltage is dependent upon the load across tip and ring and the programmable current limit.

The tip and ring voltages for various loop resistances are shown in Figure 4. The tip voltage remains relatively constant as the ring voltage moves to limit the loop current for short loops.

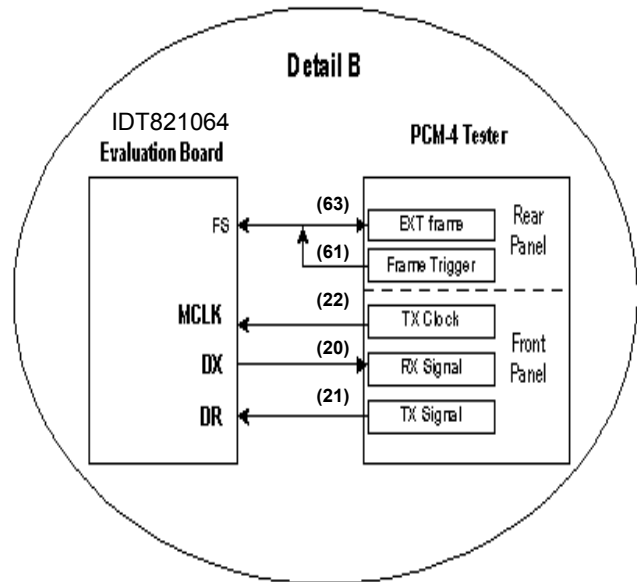
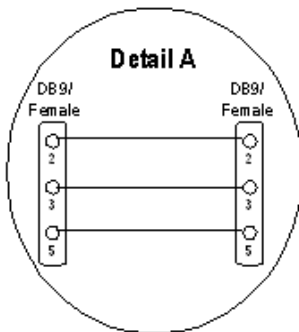
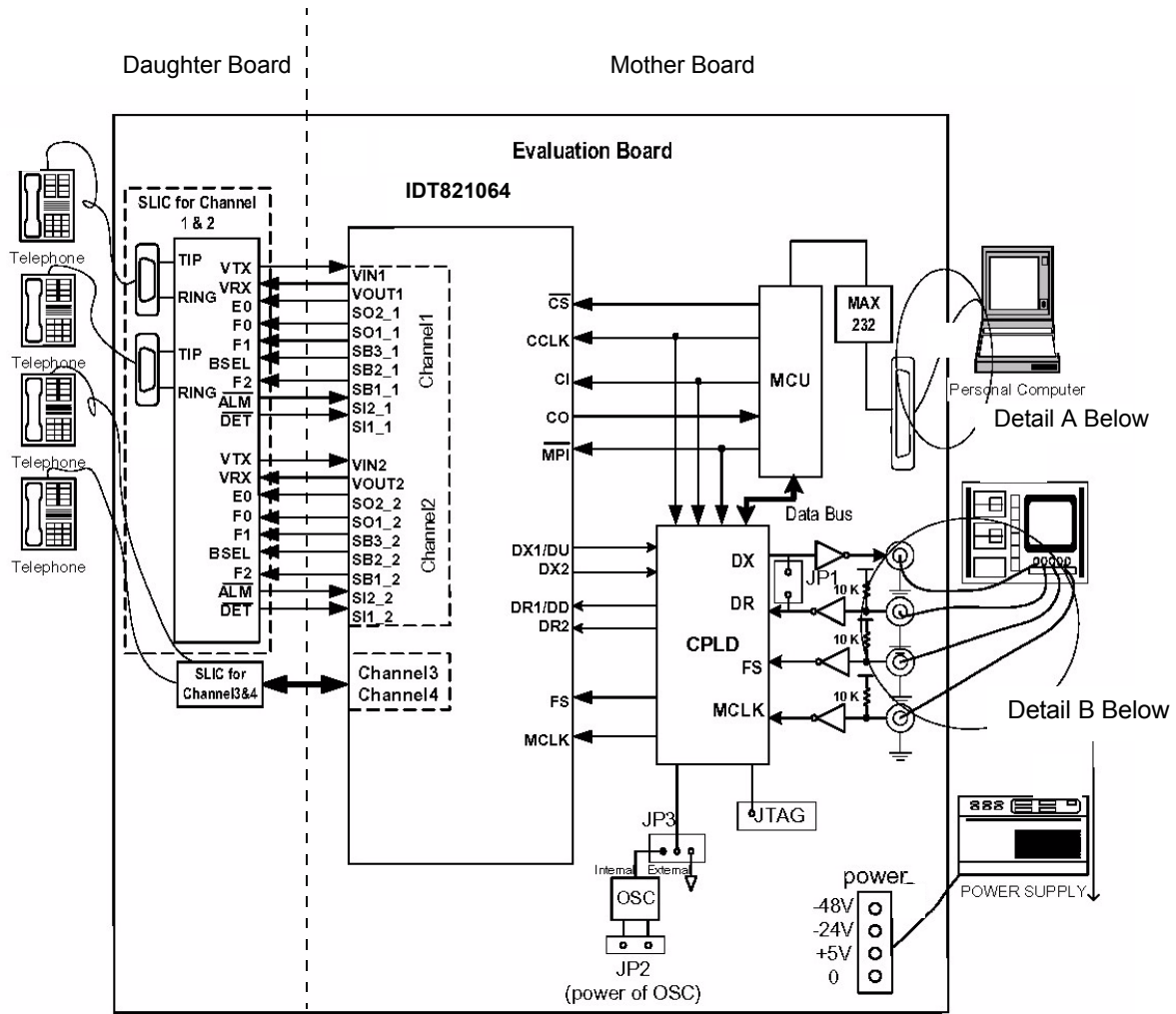


FIGURE 2. IDT821064 MOTHER BOARD CONNECTIONS

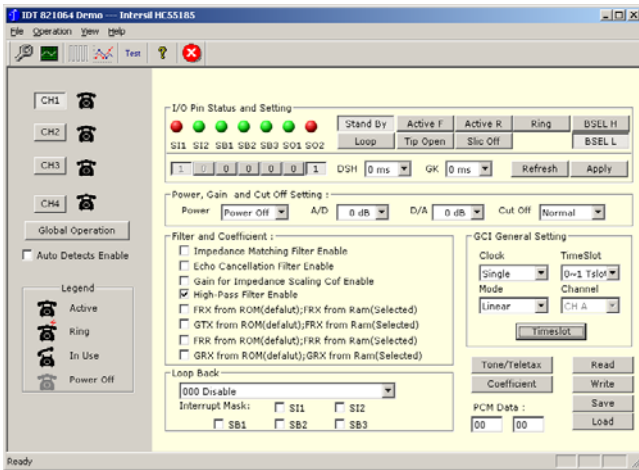


FIGURE 3. GCI OPERATION GENERAL INTERFACE

When power is applied to the SLIC, a loop current will flow from tip to ring through a load placed across tip and ring. Loop current detection occurs when this loop current triggers an internal detector that pulls the output of  $\overline{\text{SHD}}$  low. This is detected by the software and the I/O Pin SI1 turns Green.

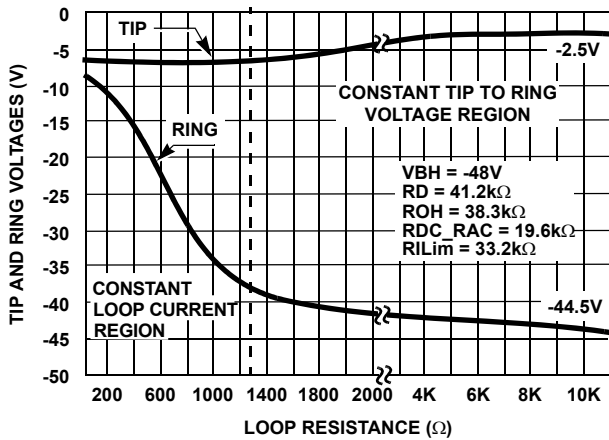


FIGURE 4. TIP AND RING VOLTAGES vs LOOP RESISTANCE

The Ground Key detector ( $\overline{\text{GKD}}$ ) operation is verified by configuring the HC55142 in the tip open state and grounding the ring pin. Grounding the ring pin results in a current that triggers an internal detector that pulls the output of  $\overline{\text{GKD\_LVM}}$  pin low. This is detected by the software and the I/O Pin SI2 and SI1 turn Green.

Most of the SLICs in the UniSLIC14 family feature 2-Wire loopback testing. This loopback function is only activated when the subscriber is **on hook** and the logic command to the SLIC is in the Test Active State. (Note: if the subscriber is **off hook** and in the Test Active State, the function performed is the Line Voltage Measurement. Reference data sheet for information on Line Voltage Measurement. This test platform is not setup to enable testing of the line voltage measurement function).

During the 2-wire loopback test, a  $2k\Omega$  internal resistor (Figure 5) is switched across the tip and ring terminals of the SLIC.

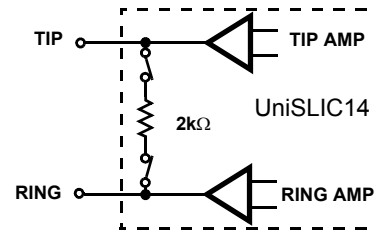


FIGURE 5. 2-WIRE LOOP BACK INTERNAL TERMINATION

When the internal signal path is provided, DC current will flow from Tip to Ring. The DC current will force  $\overline{\text{SHD}}$  low. This is detected by the software and the I/O Pin SI1 turns Green.

### Measuring Tip and Ring Voltages

1. Configure Hardware and Software as described in section titled "Getting Started".
  2. Configure Mother Board for Emulation Mode. Verify:
    - Jumper JP1 is IN,
    - JP2 is IN,
    - JP3 is set to Internal BCLK.
- NOTE: Once the software is initiated (section "Getting Started"), the user can switch between Emulation and Test modes and still maintain software control.
3. From GCI Software screen, Select: Active F, TSD, Power On.
  4. Measure the tip and ring voltages (reference Figure 6) and compare to those in Table 1 (onhook).
  5. Terminate TIP and RING with a  $600\Omega$  load via the RJ11 jack.
  6. Measure tip and ring voltages with respect to ground and compare to those in Table 1 (offhook  $600\Omega$ ).
  7. From GCI Software screen, Select: Active R, TSD, Power On.
  8. Disconnect the  $600\Omega$  load from across tip and ring.
  9. Repeat steps 4, 5, 6 and 8.

TABLE 1. TIP AND RING VOLTAGES

LOGIC STATE	$R_L$ ( $\Omega$ )	TIP VOLTAGE REFERENCED TO GND	RING VOLTAGE REFERENCED TO GND
Forward Active $V_{BH} = -48V$ $V_{BL} = NA$ $V_{CC} = +5V$	Onhook	$\approx -2.5$	$\approx -44.0$
	Offhook $600\Omega$	$\approx -6.0$	$\approx -24.0$
Reverse Active $V_{BH} = -48V$ $V_{BL} = NA$ $V_{CC} = +5V$	Onhook	$\approx -44.0$	$\approx -2.5$
	Offhook $600\Omega$	$\approx -24.0$	$\approx -6.0$

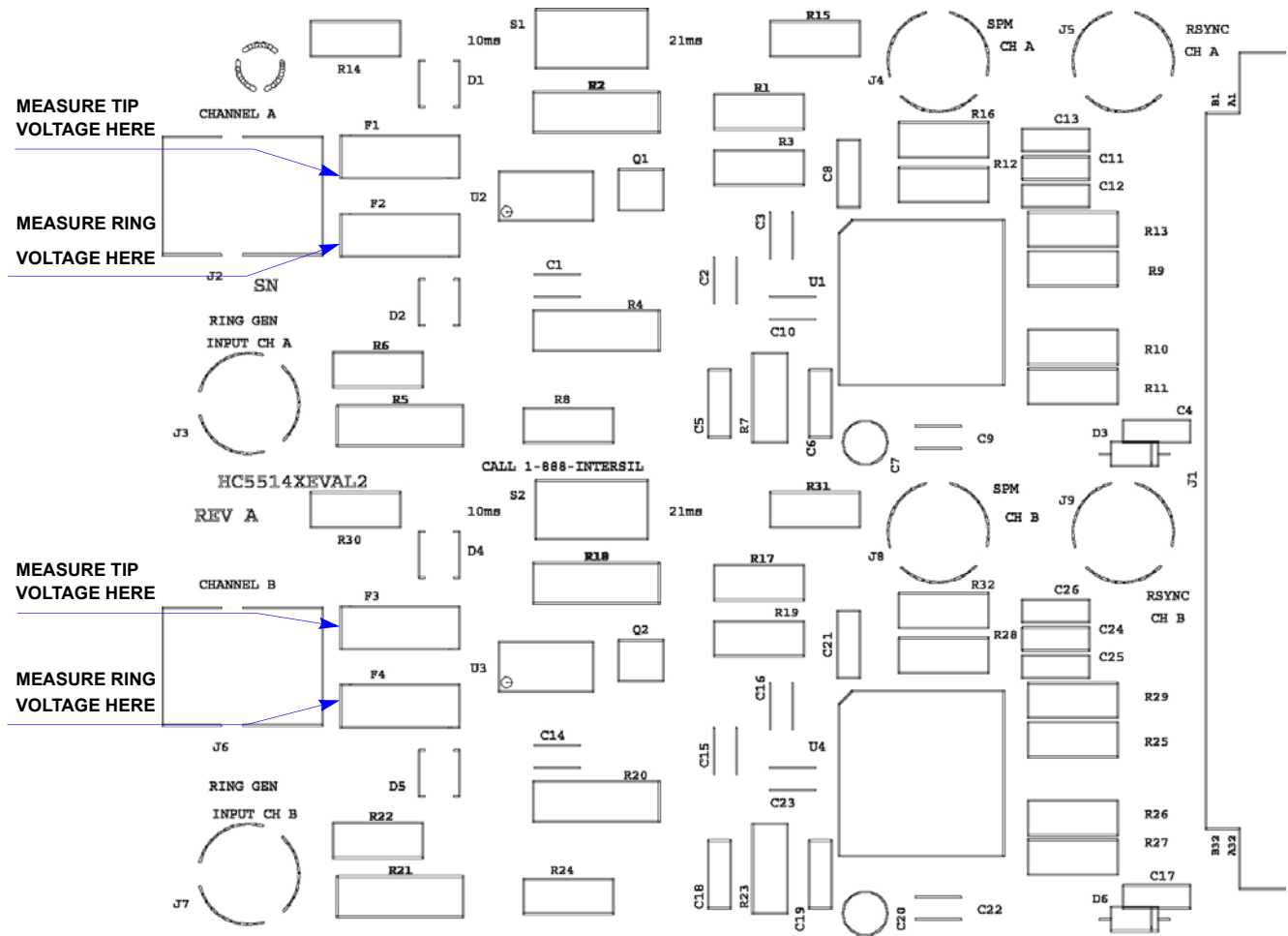


FIGURE 6. DAUGHTER BOARD LAYOUT

## Test # 2 Loop Supervisory Detection

### Verification of Switch Hook Detect

If previous test was Test #1, skip to step 3.

1. Configure Hardware and Software as described in section titled "Getting Started".
2. Configure Mother Board for Emulation Mode. Verify:
  - Jumper JP1 is IN,
  - JP2 is IN,
  - JP3 is set to Internal BCLK.

NOTE: Once the software is initiated (section "Getting Started"), the user can switch between Emulation and Test modes and still maintain software control.
3. From GCI Software screen, Select: Active F, TSD, Power On.
4. With the SLIC in either the forward active state (Active F) or reverse active state (Active R), the phone icon (left shaded area of the GCI screen) indicates In Use and the I/O Pin S11 turns Green when tip and ring are terminated with 600Ω load and Red when tip and ring are an open circuit.
 

NOTE: The I/O pin S11 gives the status of the UniSLIC14  $\overline{\text{SHD}}$  output. Red is logic level high and Green is logic level low.
5. Disconnect the 600Ω load from across tip and ring.

### Verification of Ground Key Detect

1. From GCI Software screen, Select: Tip Open, TSD, Power On.
2. The phone icon (left shaded area of the GCI screen) indicates Active and the I/O Pin SI2 is Red.
3. Momentarily Grounding the ring terminal will verify Ground Key Detect when the phone icon (left shaded area of the GCI screen) indicates In Use and the I/O Pin SI2 and S11 turn Green.
 

NOTE: The I/O pin SI2 gives the status of the UniSLIC14  $\overline{\text{GKD\_LVM}}$  output. Red is logic level high and Green is logic level low.

### Verification of 2-wire Loopback

1. From GCI Software screen, Select: Active F and then Test A F, TSD, Power On.
 

NOTE: The Test Active State requires previous state to be in the Forward Active state to determine the On hook or Off hook status of the line. To activate the 2-wire loop back function from the Test Active state, the line must be in a On hook condition when in the Active F state.
2. Verification of 2-wire Loopback operation is when the phone icon (left shaded area of the GCI screen) indicates In Use and the I/O Pin S11 is Green.

### Operation of the ISL5571A Latch

This test verifies the operation of the ISL5571A Latch.

#### Discussion

With the LATCH pin of the ISL5571A enabled, the logic state of the ISL5571A will remain in the last state programmed. The logic state of the UniSLIC14 will continue to follow the logic command of the IDT821064. Verification of the operation of the ISL5571A latch is accomplished by latching the ISL5571A in the idle/talk state. Now if we change the logic state of the UniSLIC14 to the ringing state, the tip voltage (which under normal conditions would measure about 0 volts for this state) continues to measure about -2.5V. This is because the ISL5571A was latched in the idle/talk state and the UniSLIC14's tip voltage in the ringing state will measure about -2.5V. Further verification of the operation of the ISL5571A's latch state is verified by unlatching the ISL5571A and noticing that the tip voltage now reads about 0 volts. This occurs because the relay has disconnected tip of the UniSLIC14 and connected it to ground through the ring return switch (SW3) Figure 9.

#### Verification of the ISL5571A Latch

1. From GCI Software screen, Select: Active F, TSD, Power On.
2. Verify tip voltage (no load, reference Figure 6) is around -2.5 volts.
3. From GCI Software screen, Select: Active F, TSD, LATCH, Power On.
4. Verify tip voltage measures about -2.5 volts.
5. From GCI Software screen, Select: Ring, TSD, LATCH, Power On. Tip voltage continues to measure around -2.5V.
6. From GCI Software screen, Select: Ring, TSD, Power On. Deselecting LATCH will configure the ISL5571A into the ringing state and tip will measure about 0 volts.

### Test # 3 Ringing Verification and Operation of the ISL5571A

This test will demonstrate the ability of the IDT821064 to control the logic state of the UniSLIC14 and the onboard Line Card Access Switch (ISL5571A) when ringing a phone. A telephone and a battery backed ring generator are required to complete this test.

#### Discussion

The UniSLIC14 family handles all the popular ringing formats with high or low side ring trip detection. The daughter card is configured for battery backed ring injected ringing.

When the subscriber goes off hook during ringing, the UniSLIC14 family automatically controls the ISL5571A to open the ringing path and reconnect the tip and ring to the phone. Ring trip detection will occur when the DR pin goes more positive than DT by approximately 4V. The UniSLIC14 family has the capability to reduce impulse noise by synchronizing the

ISL5571A to apply the ringing signal at zero ringing voltage and opening the ringing signal at zero ringing current.

#### APPLYING THE RING SIGNAL AT ZERO VOLTAGE

Applying the ring signal at zero voltage is accomplished by providing a ring sync pulse to the RSYNC CH A/B BNC on the daughter board (Figure 6). The ring sync pulse is synchronized to go low at the zero voltage crossing of the ring signal.

The RSYNC input is designed to allow the ring sync pulse to be present at all times. There is no need to gate the ring sync pulse on and off. When the RSYNC CH A/B is high the ISL5571A connects the SLIC to the phone. When the RSYNC CH A/B is low the ISL5571A is activated the instant the logic code for ringing is applied.

Operation of the ISL5571A does not require a RSYNC pulse be present. The daughter board is configured so the RSYNC pin is grounded through one of two resistors via S1 or S2, channel A and B respectively (Figure 6).

The RSYNC pin performs two functions. The first is synchronization for zero voltage of the ring signal and the second function is polarity reversal time. The board is configured to provide 10msec or 21msec reversal times via S1 or S2. Reference UniSLIC14 data sheet for more information concerning this topic.

#### REMOVING THE RING SIGNAL AT ZERO CURRENT

The ISL5571A is automatically opened at zero current by the SLIC. The SLIC logic requires zero ringing current in the loop and either a valid switch hook detect (SHD) or a change in the operating mode (cadence of the ringing signal) to control the ISL5571A to open at zero current. If the subscriber goes off hook during ringing, the  $\overline{\text{SHD}}$  output will go low. An internal latch will sense SHD is low and instruct the ISL5571A to stop ringing. This prevents the ring signal from being reapplied to the line. To ring the line again, the SLIC must toggle between logic states. (Note: The previous state can not be the Reverse Active State. In the reverse state, the voltage on the CRT\_REV\_LVM capacitor will activate an internal latch prohibiting the ringing of the line.)

Figure 7 shows the sequence of events from ringing the phone to ring trip. The ISL5571A rings the phone when both the ringing code and ring sync pulse are present (A).  $\overline{\text{SHD}}$  is high at this point. When the subscriber goes off hook the SHD pin goes low and stays low until the ringing control code is removed (B). This prevents the  $\overline{\text{SHD}}$  output from pulsing after ring trip occurs. At the next zero current crossing of the ring signal, ring trip occurs and the ring relay releases the line to allow loop current to flow in the loop (C).

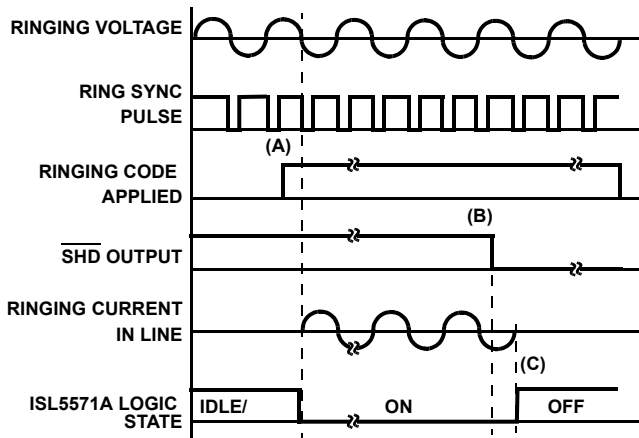


FIGURE 7. COEFFICIENT RAM OPERATION SCREEN

If the RSYNC\_REV pin is low (by either a ring sync pulse or through a polarity reversal resistor), the ring relay driver pin (RRLY) pin goes low after the SLIC is placed in the ringing state. This will automatically configure the ISL5571A in the ringing state as shown in Figure 9. The ISL5571A disconnects tip and ring from the phone and connects the path for the ringing signal. The  $D_T$  and  $D_R$  comparator inputs will sense the flow of DC loop current, enabling the ring trip comparator to sense when the phone is either onhook or offhook. When an offhook condition is detected, the HC55142 will automatically disconnect the ringing signal to the phone reducing impulse noise to the system at the zero current crossing of the ring signal.

### Ringling the Phone

If previous test was either Test #1 or #2, skip to step 3.

1. Configure Hardware and Software as described in section titled "Getting Started".
2. Configure Mother Board for Emulation Mode. Verify:
  - Jumper JP1 is IN,
  - JP2 is IN,
  - JP3 is set to Internal BCLK.

NOTE: Once the software is initiated (section "Getting Started"), the user can switch between Emulation and Test modes and still maintain software control.
3. From GCI Software screen, Select: CH 1, Active F, TSD, Power On.
4. Connect a 20 Hz 90Vrms Battery backed (-48V) ringing signal to the Ring GEN BNC CH A on the daughter board.
5. Connect a phone to Channel 1 using the RJ11 jack on the Daughter Board
6. From GCI Software screen, Select Ring and the phone will start to ring. Cadencing of the ring signal is accomplished by switching between Ring and Active F (or Active R). Note: the command to the SLIC is immediate, you don't have to press Write for the command to be invoked.

### Test # 4 Programming of Coefficients

Using the DSP coefficients provided by IDT, the overall performance of the system will pass ITU-T requirements.

When the COF RAM button is selected from the GCI Operation General Interface screen, the COF RAM Operation screen will appear (Figure 8). From this screen, the user can load the coefficients for the current channel.

For IDT to calculate IDT821064 DSP coefficient, customers should provide the following information about their subscriber line card:

- Accurate SLIC PSPICE model. It can be provided in .lib file or PSPICE schematic file.
- System Impedance
- Gain (Transmit path and Receive path)

IDT will then provide the user with 4 files, one for each channel. An example of a file name is: HC55142\_600\_1. The first portion of the file name is the SLIC being used (HC55142). The second portion of the file name is the line impedance the coefficients are matching (600Ω) and the last portion is the channel (1).

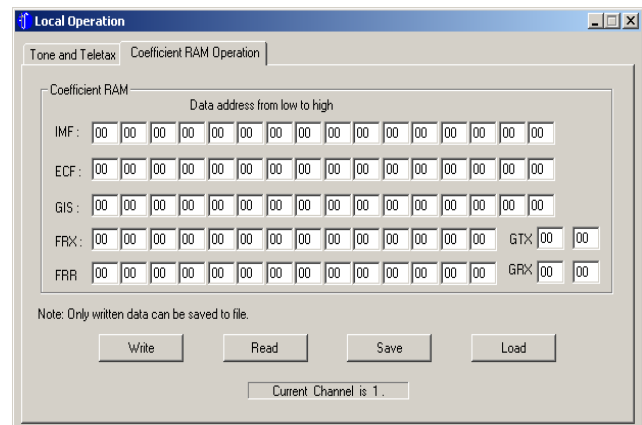


FIGURE 8. COEFFICIENT RAM OPERATION SCREEN

### Loading Coefficients

If previous test was Test #1, #2 or #3, skip to step 3.

1. Configure Hardware and Software as described in section titled "Getting Started".

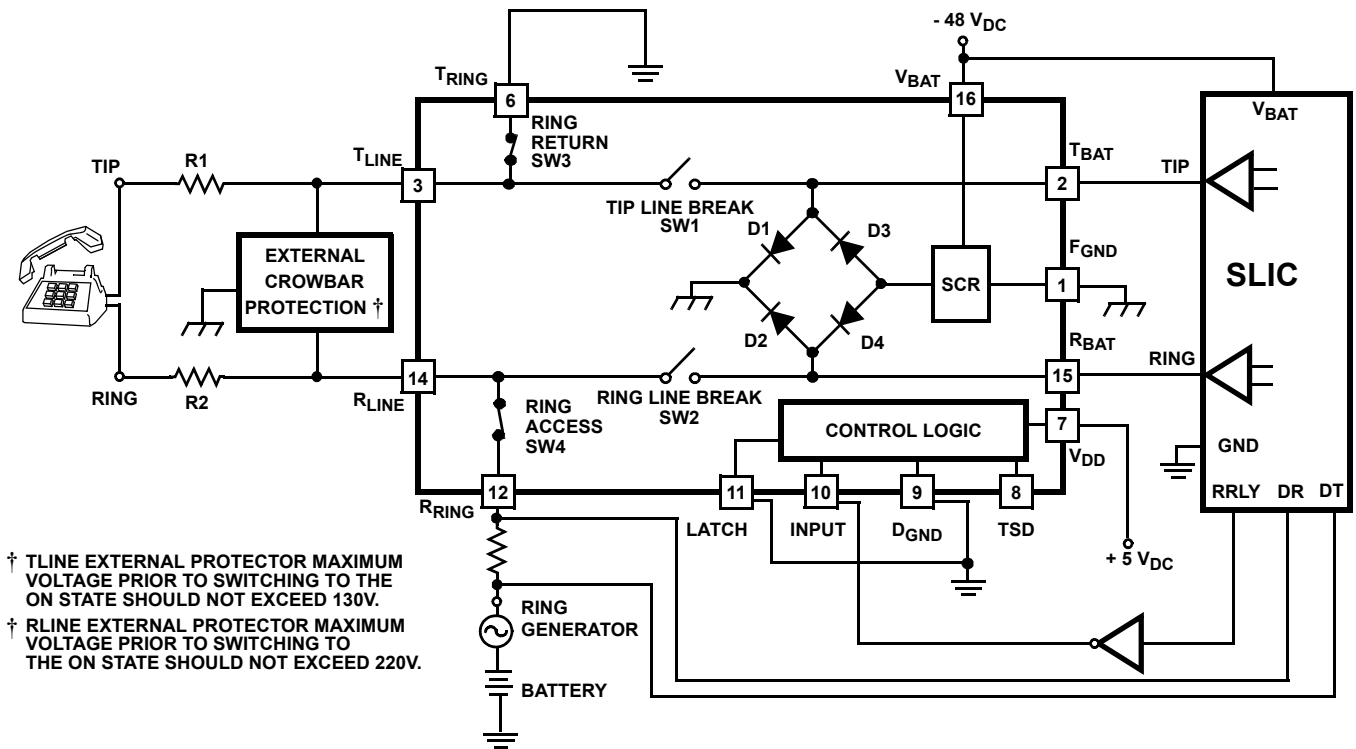


FIGURE 9. APPLICATION CIRCUIT

TABLE 2. TRUTH TABLE - ISL5571A

LOGIC STATE	LOGIC INPUTS			SWITCH CONDITION			
	LATCH	INPUT	T <sub>SD</sub>	TIP LINE BREAK SWITCH	RING LINE BREAK SWITCH	RINGING RETURN SWITCH	RINGACCESS SWITCH
IDLE / TALK	0	0	1 or Floating (Note 11)	ON	ON	OFF	OFF
POWER RINGING	0	1	1 or Floating (Note 11)	OFF	OFF	ON	ON
IDLE / TALK LATCHED (Note 12)	1	0	1 or Floating (Note 11)	ON	ON	OFF	OFF
POWER RINGING LATCHED (Note 12)	1	1	1 or Floating (Note 11)	OFF	OFF	ON	ON
All OFF	X	X	0 (Note 13)	OFF	OFF	OFF	OFF

NOTES:

1. Thermal shutdown mechanism is active with TSD floating or equal to 5V.
2. If the LATCH pin is low, the logic state of the device is controlled by the INPUT pin. When the LATCH pin goes high, the current logic state is latched. As long as the LATCH pin is held high, the device will no longer respond to any changes applied to the INPUT control pin. The state of the device will be permanently latched until the LATCH pin is taken low.
3. Setting TSD to a logic low overrides the LATCH and INPUT logic pins and forces all switches to turn OFF.



2. Configure Mother Board for Emulation Mode. Verify:
  - Jumper JP1 is IN,
  - JP2 is IN,
  - JP3 is set to Internal BCLK.

NOTE: Once the software is initiated (section “Getting Started”), the user can switch between Emulation and Test modes and still maintain software control.
3. From GCI Software screen, Select the desired Channel by clicking on the channel button in the left shaded area
4. From GCI Software screen, Select COF RAM. The Coefficient Ram Operation screen will appear (Figure 8).

**Down loading Coefficients from a File:**

- Click on Load and the desk top window opens. Navigate to where the file is stored and select the coefficients for the channel being programmed. Opening the file will automatically load the coefficients into COF RAM screen. Another window will appear to inform you that the file successfully loaded.
  - Click OK. Exit the screen by clicking the Close button (don’t write files from this screen). This will return you to the GCI Software screen. Click Write from this screen.
5. Repeat steps 3 and 4 to load the coefficients for the other channels.

4. From GCI Software screen, in the GCI General Setting section, select Linear mode. This will enable you to select Time Slot. Click on the Time Slot button. The Time slot and PCM Highway Assignment screen will appear (Figure 10).
5. For communications between Channel 1 and Channel 2, one possible configuration is:  
Set Channel 1 Transmit = 000, DX1  
Set Channel 1 Receive = 001,DR1  
Set Channel 2 Transmit = 001,DX1  
Set Channel 2 Receive = 000, DR1
6. Set the transmit and receive paths as shown in step 5 and click the Write button.
7. Connect Phones to the RJ11 jacks of both Channels 1 and Channel 2. Communication between Channels 1 and 2 is now possible.

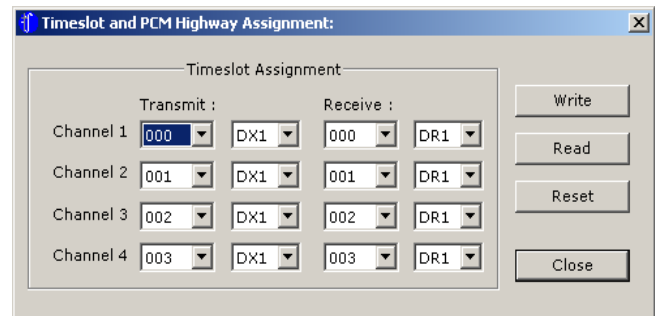


FIGURE 10. TIMESLOT & PCM HIGHWAY ASSIGNMENTS

**Test # 5 Emulation of Phone Conversation**

This test will demonstrate an end to end phone conversation between Channel 1 and Channel 2. Setting up an end to end phone conversation is accomplished with the Timeslot and PCM Highway Assignment screen (Figure 10). The user can select any time slot for Channels transmit and receive. If the time slot assigned to the receive path of Channel X is the same one assigned to the transmit path of Channel Y, and the time slot assigned to the transmit path of Channel X is the same one assigned to the receive path of Channel Y, then Channel X and Channel Y can communicate with each other.

**Assigning Timeslots**

If previous test was Test #1, #2, #3 or #4, skip to step 3.

1. Configure Hardware and Software as described in section titled” Getting Started”
2. Configure Mother Board for Emulation Mode. Verify:
  - Jumper JP1 is IN,
  - JP2 is IN,
  - JP3 is set to Internal BCLK.

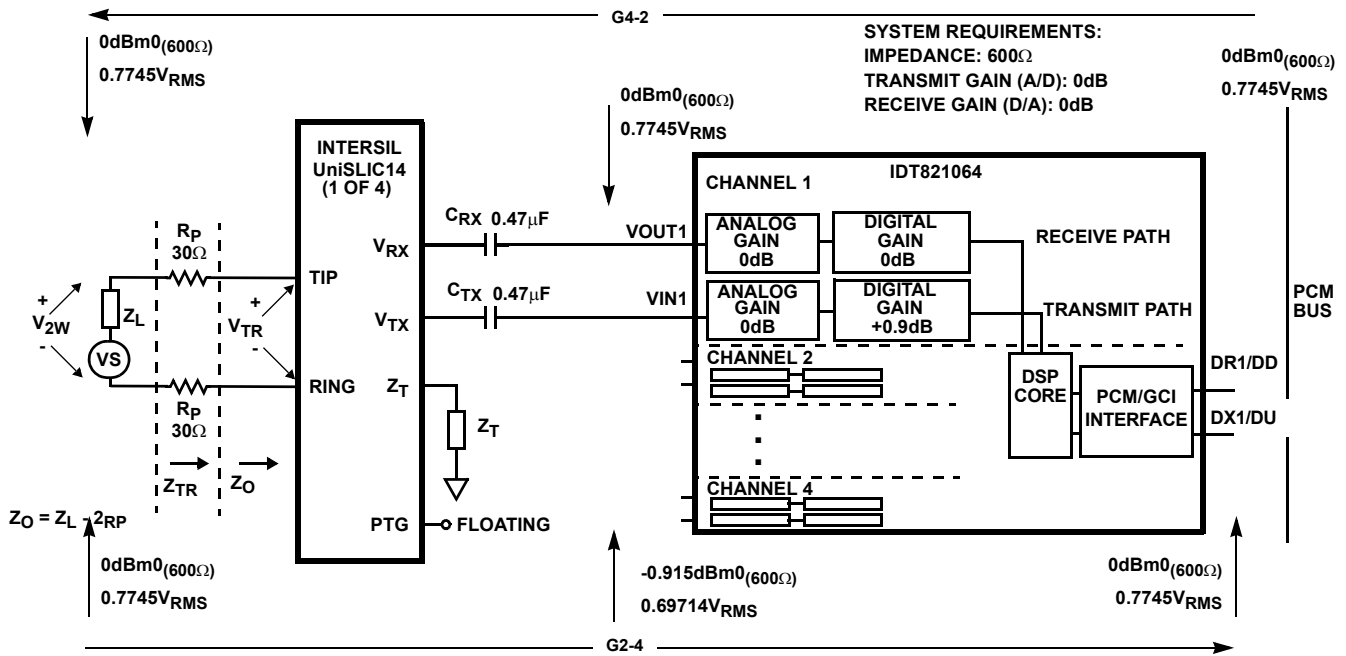
NOTE: Once the software is initiated (section “Getting Started”), the user can switch between Emulation and Test modes and still maintain software control.

3. From GCI Software screen, Select Dual Tone Setting and verify that both the High Tone and Low Tone are Disabled. This will prevent the high or low tone signals from interfering with the Channel to Channel communication.

**Test # 6 Gain Verification**

This test will verify the gains through the IDT821064 and the UniSLIC14 are operating properly. The test will show, with the proper coefficients loaded into the CODEC, the Digital to Analog gain across both the CODEC and the SLIC is equal to -1.0 (0.0dB), and the Analog to Digital gain across both the SLIC and the CODEC is also equal to 1.0 (0dB). Both D/A and A/D gains will be verified by performing a Digital to Digital gain using the PCM4.

Figure 11 shows the reference design of the UniSLIC14 and the IDT821064 with a 600Ω load impedance and transmit and receive gains of 0dB. Reference AN9999 for a detailed engineering analysis of the reference design.



NOTE: Reference Table 1 Application Note AN9999 for coefficients.

FIGURE 11. REFERENCE DESIGN OF THE UniSLIC14 AND THE IDT821064 WITH A 600Ω LOAD IMPEDANCE

### Total System Gain (D/D)

If previous test was Test #1, #2, #3, #4 or #5, skip to step 2.

1. Configure Hardware and Software as described in section titled "Getting Started"
2. Prerequisite for this test is that test #4 "Programming of Coefficients" be completed using the 600Ω coefficients, system gains: (A/D = 0dB, D/A = 0dB) and CODEC analog gains: (A/D = +6dB, D/A = 0dB) Table 1 of application note AN9999.
3. Terminate tip and ring with a 600Ω load via the RJ11 jack.
4. Configure Mother Board for TEST Mode. Verify:
  - Jumper JP1 is OUT,
  - JP2 is OUT,
  - JP3 is set to External BCLK.

Note: Once the software is initiated (section "Getting Started"), the user can switch between Emulation and Test modes and still maintain software control.
5. Set the General Parameters of the PCM4 as shown in Table 3.
6. Set the PCM4 transmit and receive channels to channel 0. This will enable the PCM4 to receive and transmit data to the Channel 1 PCM time slot. To test channel 2 of the Mother Board, set the PCM4 to channel 1. Continue this pattern for remaining channels.
7. From GCI Software screen, set the A/D (Transmit) Gain = 0dB and the D/A (Receive) Gain = 0dB.
8. Configure the PCM4 for the MODE A 11 test. Set PCM4 to D-D, SWP/S (single sweep). Press start to test network.

### Verification

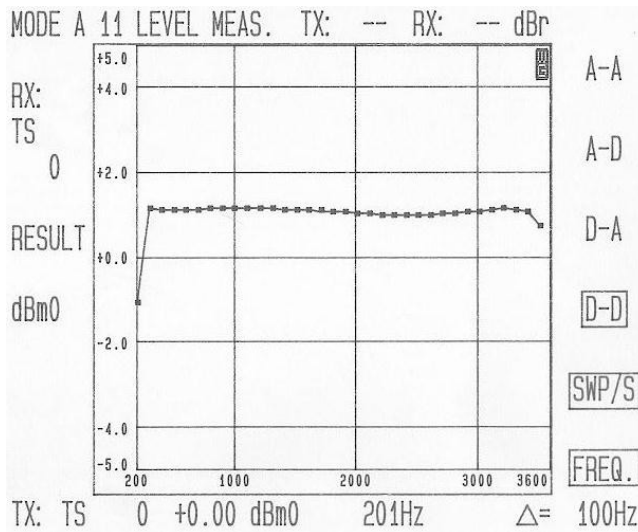
Compare results to the Figure 12

TABLE 3. PCM4 GENERAL PARAMETERS SETTINGS

GENERAL PARAMETER	SETTING	PARAM
<b>(1) Digital Configuration:</b>		
General configuration	TX/RX 2M/2Mbits/s selected	11
Digital Loop (A - A)	OPEN/AUX.SIGN.	23
<b>(2) Frame Selection:</b>		
TX frame type	All 32 TS teleph	14
RX frame type	All 32 TS teleph	24
CRC-4 Multiframe	Off	31
<b>(3) Digital TX Interface:</b>		
Line Code	NRZ	13
Output Impedance	75 ohms unbalanced	22
Clock	Int. 2048 kHz	31
<b>(4) Digital RX Interface:</b>		
Line Code	NRZ	13
Input Impedance	> 3kΩ	22
<b>(5) Digital Words in TX Frame:</b>		
Frame Words	Reset to standard values	11
Send Signal	ALL CHAN.	22
<b>(6) TX Error Insertion</b>	Off	11
<b>(7) PCM Coding:</b>		
TX Encoding Law	Must match switch S7-6 on IDT821064 EVM. Default setting on EVM is A-law	11
RX Encoding Law	Must match encoding law	21

**TABLE 3. PCM4 GENERAL PARAMETERS SETTINGS (Continued)**

GENERAL PARAMETER	SETTING	PARM
<b>(8) Scanner Parameter:</b>		
VF-Input no.	1	11
VF-Output no.	1	21
<b>(9) Special Parameter:</b>		
Level Display	dBm0	11
Two wire Term.	Infinite	13
Digital Channel no.	Time Slot	16
	Mark and cont.	22
Tolerance mask set 2		23
	Mark and cont.	27
Clock display	OFF	33
OFF		35



**FIGURE 12. TOTAL SYSTEM GAIN (D/D)**

### Test # 7 Variation of Gain / Frequency

This test will configure the UniSLIC14 in the loopback mode and evaluate the IDT821064 and the UniSLIC14's AC performance across frequency.

#### Discussion

Most of the SLICs in the UniSLIC14 family feature 2-Wire loopback testing. During the 2-wire loopback test, a 2kΩ internal resistor is switched across the tip and ring terminals of the SLIC. This allows the SHD function and the 4-wire to 4-wire AC transmission, right up to the subscriber loop, to be tested.

#### Variable Gain / Frequency (D/A) Test #7a

If previous test was Test #1, #2, #3, #4, or #5, skip to step 2. If previous test was Test # 6 skip to step 7.

1. Configure Hardware and Software as described in section titled "Getting Started"
2. Prerequisite for this test is that test #4 "Programming of Coefficients" be completed using the 600Ω coefficients,

system gains: (A/D = 0dB, D/A = 0dB) and CODEC analog gains: (A/D = +6dB, D/A = 0dB) Table 1 of application note AN9999.

3. Configure Mother Board for TEST Mode. Verify:

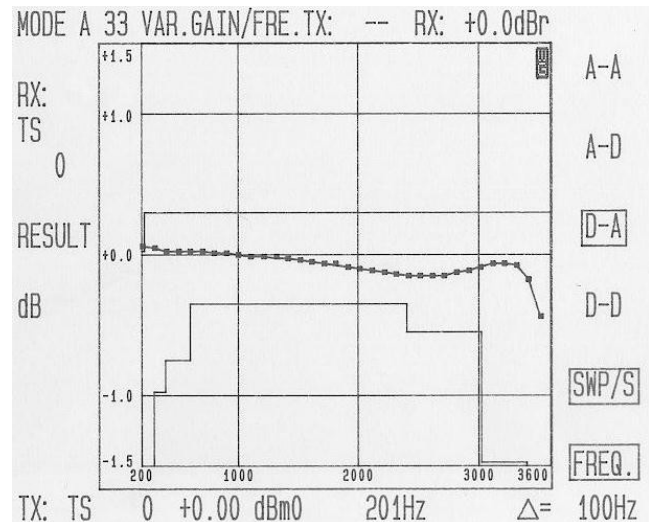
- Jumper JP1 is OUT,
- JP2 is OUT,
- JP3 is set to External BCLK.

NOTE: Once the software is initiated (section "Getting Started"), the user can switch between Emulation and Test modes and still maintain software control.

4. Set the General Parameters of the PCM4 as shown in Table 3.
5. Set the PCM4 transmit and receive channels to channel 0. This will enable the PCM4 to receive and transmit data to the Channel 1 PCM time slot. To test channel 2 of the Mother Board, set the PCM4 to channel 1. Continue this pattern for remaining channels.
6. From GCI Software screen, set the A/D (Transmit) Gain = 0dB and the D/A (Receive Gain) = 0dB.
7. Remove the 600Ω load from across tip and ring.
8. From GCI Software screen, Select: Active F and then Test A F, TSD, Power On.
9. Configure the PCM4 for the MODE A 33 test. Set PCM4 to D-A, SWP/S (single sweep). Press start to test network.

#### Verification

Compare results to the Figure 13.



**FIGURE 13. (D/A) VARIABLE GAIN vs. FREQUENCY**

### Variable Gain / Frequency (A/D) Test #7b

1. Configure the PCM4 for the MODE A 33 test. Set PCM4 to A-D, SWP/S (single sweep). Press start to test network.

#### Verification

Compare results to the Figure 14.

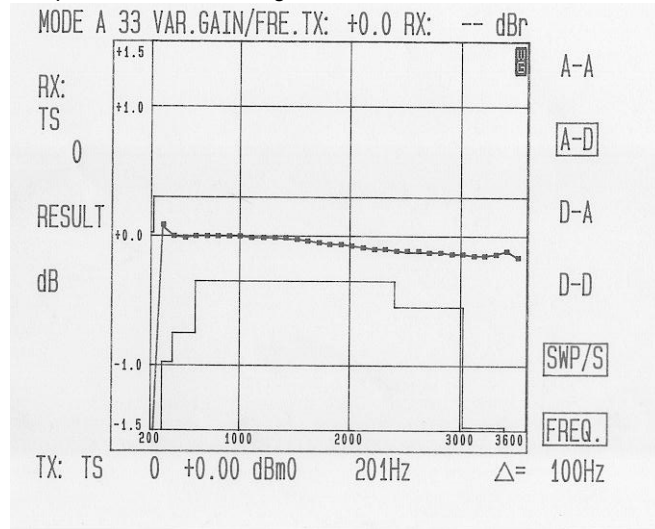


FIGURE 14. (A/D) VARIABLE GAIN vs. FREQUENCY

### Test # 8 Total Distortion

This test will configure the UniSLIC14 in the loopback mode and evaluate the IDT821064 and the UniSLIC14's Total Distortion.

#### Total Distortion (D/A) Test #8a

If previous test was Test # 1, #2, #3, #4, or #5, skip to step 2.  
If previous test was Test # 6 skip to step 7.

If previous test was Test #7a/b skip to step 9.

1. Configure Hardware and Software as described in section titled "Getting Started"
2. Prerequisite for this test is that test #4 "Programming of Coefficients" be completed using the 600Ω coefficients, system gains: (A/D = 0dB, D/A = 0dB) and CODEC analog gains: (A/D = +6dB, D/A = 0dB) Table 1 of application note AN9999.
3. Configure Mother Board for TEST Mode. Verify:
  - Jumper JP1 is OUT,
  - JP2 is OUT,
  - JP3 is set to External BCLK.

NOTE: Once the software is initiated (section "Getting Started"), the user can switch between Emulation and Test modes and still maintain software control.
4. Set the General Parameters of the PCM4 as shown in Table 3.
5. Set the PCM4 transmit and receive channels to channel 0. This will enable the PCM4 to receive and transmit data to the Channel 1 PCM time slot. To test channel 2 of the Mother Board, set the PCM4 to channel 1. Continue this pattern for remaining channels.

6. From GCI Software screen, set the A/D (Transmit) Gain = 0dB and the D/A (Receive Gain) = 0dB.
7. Remove the 600Ω load from across tip and ring.
8. From GCI Software screen, Select: Active F and then Test A F, TSD, Power On.
9. Configure the PCM4 for the MODE A 55 test. Set PCM4 to D-A, SWP/S (single sweep). Press start to test network.

#### Verification

Compare results to the Figure 15.

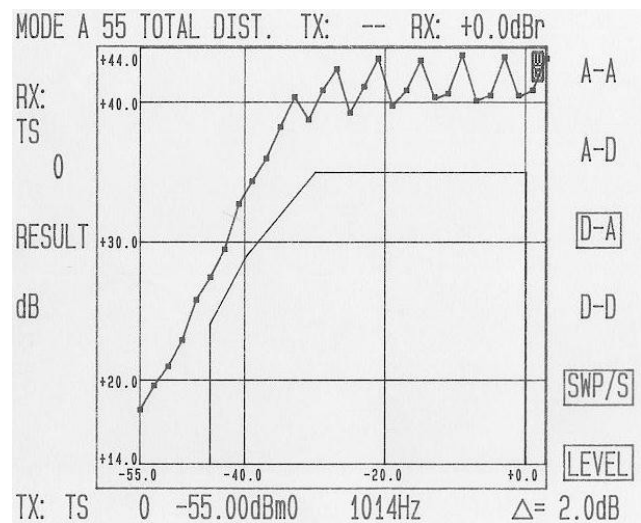


FIGURE 15. (D/A) TOTAL DISTORTION

#### Total Distortion (A/D) Test #8b

1. Configure the PCM4 for the MODE A 55 test. Set PCM4 to A-D, SWP/S (single sweep). Press start to test network.

#### Verification

Compare results to the Figure 16.

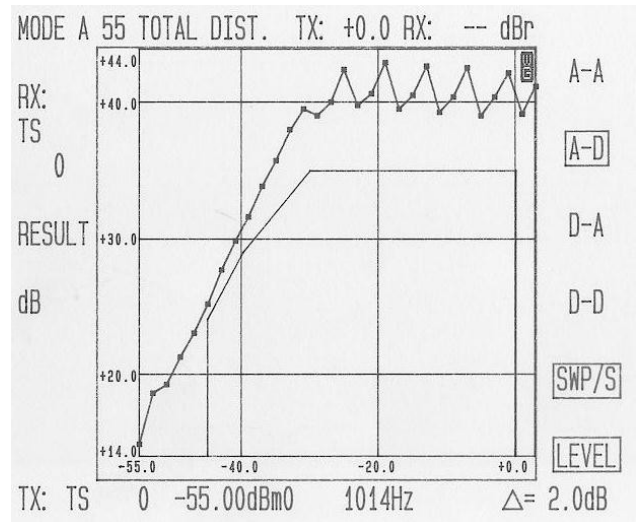


FIGURE 16. (A/D) TOTAL DISTORTION

### Layout Considerations

### ***Systems with Dual Supplies ( $V_{BH}$ and $V_{BL}$ )***

If the  $V_{BL}$  supply is *not* derived from the  $V_{BH}$  supply, it is recommended that an additional diode be placed in series with the  $V_{BH}$  supply (D3 and D6 Figure 17). The orientation of this diode is anode on pin 8 of the device and cathode to the external supply. This external diode will inhibit large currents and potential damage to the SLIC, in the event the  $V_{BH}$  supply is shorted to GND. If  $V_{BL}$  is derived from  $V_{BH}$  then this diode is not required.

### ***Floating the PTG Pin***

The PTG pin is a high impedance pin (500k $\Omega$ ) that is used to program the 2-wire to 4-wire gain to either 0dB or -6dB.

If 0dB is required, it is necessary to float the PTG pin. The PC board interconnect should be as short as possible to minimize stray capacitance on this pin. Stray capacitance on this pin forms a low pass filter and will cause the 2-wire to 4-wire gain to roll off at the higher frequencies.

If a 2-wire to 4-wire gain of -6dB is required, the PTG pin should be grounded as close to the device as possible.

### ***SPM Pin***

For optimum performance, the PC board interconnect to the SPM pin should be as short as possible. If pulses metering is not being used, then this pin should be grounded as close to the device pin as possible.

### ***RLIM Pin***

The current limiting resistor  $R_{LIM}$  needs to be as close to the RLIM pin as possible.

### ***Layout of the 2-Wire Impedance Matching Resistor $Z_T$***

Proper connection to the ZT pin is to have the external  $Z_T$  network as close to the device pin as possible.

The ZT pin is a high impedance pin that is used to set the proper feedback for matching the impedance of the 2-wire side. This will eliminate circuit board capacitance on this pin to maintain the 2-wire return loss across frequency.

### Daughter Board Schematic

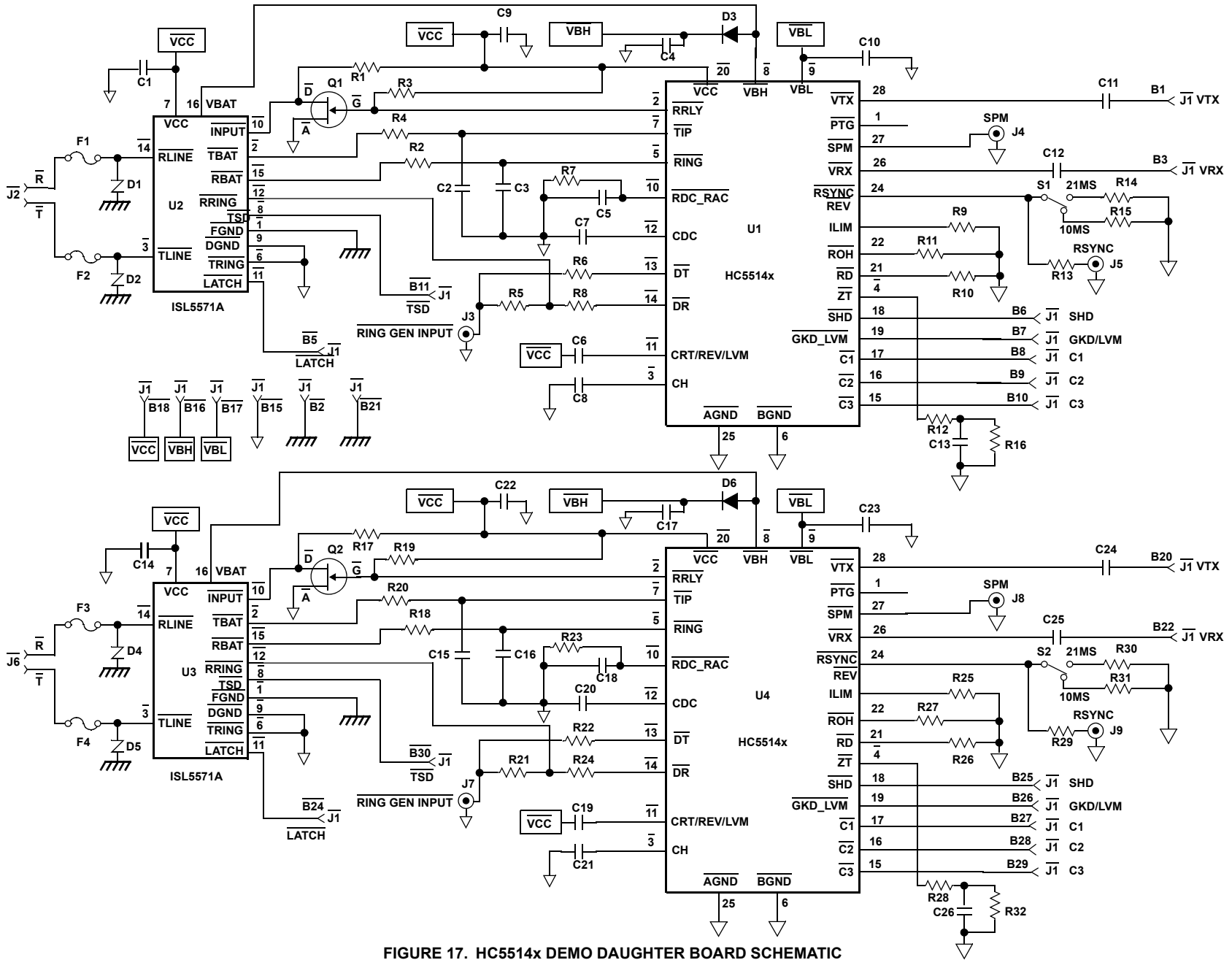


FIGURE 17. HC5514x DEMO DAUGHTER BOARD SCHEMATIC

TABLE 4. DAUGHTER BOARD COMPONENT LIST

COMPONENT	VALUE	TOLERANCE	RATING
U1, U4 - SLIC	UniSLIC14 Family	N/A	N/A
U2, U3 - LCAS	ISL5571A	N/A	N/A
R1, R17	10K	1%	1/16W
R3, R19	1K	1%	1/16W
R2, R4, R18, R20 (Line feed resistors)	30Ω	Matched 1%	2.0W
R7, R23 (RDC_RAC) R = 50*RFEED, RFEED = 381Ω	21.0kΩ	1%	1/16W
R6, R8, R22, R24 (Input current limiting resistors for DT and DR)	3MΩ	1%	1/16W
R10, R26 (RD resistor) R = 500/I <sub>SH</sub> , I <sub>SH</sub> = 9.78mA	41.2kΩ	1%	1/16W
R11, R27 (ROH resistor) R = 500/I <sub>loop(min)</sub> -I <sub>SH</sub> - (I <sub>loop(min)</sub> = 20mA, I <sub>SH</sub> = 6.54mA)	38.3kΩ	1%	1/16W
R9, R25 (R <sub>ILIM</sub> resistor) R = 1000/I <sub>LIM</sub> (I <sub>LIM</sub> = 30mA)	33.2kΩ	1%	1/16W
R15, R31 (RSYNC_REV resistors) R = 3.47k/μs (10ms)	34.8kΩ	1%	1/16W
R12, R28 (RZT, 2-Wire Impedance Matching Resistor) R = 200(ZO-2RF) Z <sub>0</sub> = 600Ω, R <sub>F</sub> = 30Ω	107KΩ	1%	1/4W
R13,R29 (Current limit resistor for Ring Sync Pulse)	49.9kΩ	1%	1/16W
R14, R30 (RSYNC_REV resistor) R = 3.47k/μs (21ms)	69.8kΩ	1%	1/16W
R5, R21 (Sense resistor for DC current during ringing)	400Ω	1%	2W
R16, R32, C13,C26 (For matching a complex 2-Wire impedance)	R16, R32 = 0Ω C13, C26 = Open	-	-
C1, C8, C9, C14, C21, C22	0.1μF	20%	10V
C10, C23	0.1μF	20%	50V
C7, C20	4.7μF	10%	50V or (V <sub>BH</sub> /2)
C5, C6, C11, C12, C18, C19, C24, C25	0.47μF	20%	10V
C4, C17	0.1μF	20%	100V
C2, C3, C15, C16	2200pF	20%	100V
D3,D6 Recommended if the V <sub>BL</sub> supply is not derived from the V <sub>BH</sub> supply.	1N4004	-	-
Q1, Q2	IRFD120		
F1, F2, F3, F4	F1250T		
D1, D4	P2000SC		
D2, D5	P1200SC		

**Design Parameters:** Switch Hook Threshold = 12mA, Loop Current Limit = 30mA, Synthesize Device Impedance = 600-60 = 540Ω, with 30Ω protection resistors, impedance across Tip and Ring terminals = 600Ω. Where applicable, these component values apply to the Basic Application Circuits for the HC55120, HC55121, HC55130, HC55140, HC55142 and HC55150. Pins not shown in the Basic Application Circuit are no connect (NC) pins.

## Notice

1. Descriptions of circuits, software and other related information in this document are provided only to illustrate the operation of semiconductor products and application examples. You are fully responsible for the incorporation or any other use of the circuits, software, and information in the design of your product or system. Renesas Electronics disclaims any and all liability for any losses and damages incurred by you or third parties arising from the use of these circuits, software, or information.
2. Renesas Electronics hereby expressly disclaims any warranties against and liability for infringement or any other claims involving patents, copyrights, or other intellectual property rights of third parties, by or arising from the use of Renesas Electronics products or technical information described in this document, including but not limited to, the product data, drawings, charts, programs, algorithms, and application examples.
3. No license, express, implied or otherwise, is granted hereby under any patents, copyrights or other intellectual property rights of Renesas Electronics or others.
4. You shall not alter, modify, copy, or reverse engineer any Renesas Electronics product, whether in whole or in part. Renesas Electronics disclaims any and all liability for any losses or damages incurred by you or third parties arising from such alteration, modification, copying or reverse engineering.
5. Renesas Electronics products are classified according to the following two quality grades: "Standard" and "High Quality". The intended applications for each Renesas Electronics product depends on the product's quality grade, as indicated below.  
"Standard": Computers; office equipment; communications equipment; test and measurement equipment; audio and visual equipment; home electronic appliances; machine tools; personal electronic equipment; industrial robots; etc.  
"High Quality": Transportation equipment (automobiles, trains, ships, etc.); traffic control (traffic lights); large-scale communication equipment; key financial terminal systems; safety control equipment; etc.  
Unless expressly designated as a high reliability product or a product for harsh environments in a Renesas Electronics data sheet or other Renesas Electronics document, Renesas Electronics products are not intended or authorized for use in products or systems that may pose a direct threat to human life or bodily injury (artificial life support devices or systems; surgical implantations; etc.), or may cause serious property damage (space system; undersea repeaters; nuclear power control systems; aircraft control systems; key plant systems; military equipment; etc.). Renesas Electronics disclaims any and all liability for any damages or losses incurred by you or any third parties arising from the use of any Renesas Electronics product that is inconsistent with any Renesas Electronics data sheet, user's manual or other Renesas Electronics document.
6. When using Renesas Electronics products, refer to the latest product information (data sheets, user's manuals, application notes, "General Notes for Handling and Using Semiconductor Devices" in the reliability handbook, etc.), and ensure that usage conditions are within the ranges specified by Renesas Electronics with respect to maximum ratings, operating power supply voltage range, heat dissipation characteristics, installation, etc. Renesas Electronics disclaims any and all liability for any malfunctions, failure or accident arising out of the use of Renesas Electronics products outside of such specified ranges.
7. Although Renesas Electronics endeavors to improve the quality and reliability of Renesas Electronics products, semiconductor products have specific characteristics, such as the occurrence of failure at a certain rate and malfunctions under certain use conditions. Unless designated as a high reliability product or a product for harsh environments in a Renesas Electronics data sheet or other Renesas Electronics document, Renesas Electronics products are not subject to radiation resistance design. You are responsible for implementing safety measures to guard against the possibility of bodily injury, injury or damage caused by fire, and/or danger to the public in the event of a failure or malfunction of Renesas Electronics products, such as safety design for hardware and software, including but not limited to redundancy, fire control and malfunction prevention, appropriate treatment for aging degradation or any other appropriate measures. Because the evaluation of microcomputer software alone is very difficult and impractical, you are responsible for evaluating the safety of the final products or systems manufactured by you.
8. Please contact a Renesas Electronics sales office for details as to environmental matters such as the environmental compatibility of each Renesas Electronics product. You are responsible for carefully and sufficiently investigating applicable laws and regulations that regulate the inclusion or use of controlled substances, including without limitation, the EU RoHS Directive, and using Renesas Electronics products in compliance with all these applicable laws and regulations. Renesas Electronics disclaims any and all liability for damages or losses occurring as a result of your noncompliance with applicable laws and regulations.
9. Renesas Electronics products and technologies shall not be used for or incorporated into any products or systems whose manufacture, use, or sale is prohibited under any applicable domestic or foreign laws or regulations. You shall comply with any applicable export control laws and regulations promulgated and administered by the governments of any countries asserting jurisdiction over the parties or transactions.
10. It is the responsibility of the buyer or distributor of Renesas Electronics products, or any other party who distributes, disposes of, or otherwise sells or transfers the product to a third party, to notify such third party in advance of the contents and conditions set forth in this document.
11. This document shall not be reprinted, reproduced or duplicated in any form, in whole or in part, without prior written consent of Renesas Electronics.
12. Please contact a Renesas Electronics sales office if you have any questions regarding the information contained in this document or Renesas Electronics products.  
(Note 1) "Renesas Electronics" as used in this document means Renesas Electronics Corporation and also includes its directly or indirectly controlled subsidiaries.  
(Note 2) "Renesas Electronics product(s)" means any product developed or manufactured by or for Renesas Electronics.

(Rev.4.0-1 November 2017)



### SALES OFFICES

Renesas Electronics Corporation

<http://www.renesas.com>

Refer to "<http://www.renesas.com/>" for the latest and detailed information.

**Renesas Electronics America Inc.**  
1001 Murphy Ranch Road, Milpitas, CA 95035, U.S.A.  
Tel: +1-408-432-8888, Fax: +1-408-434-5351

**Renesas Electronics Canada Limited**  
9251 Yonge Street, Suite 8309 Richmond Hill, Ontario Canada L4C 9T3  
Tel: +1-905-237-2004

**Renesas Electronics Europe Limited**  
Dukes Meadow, Millboard Road, Bourne End, Buckinghamshire, SL8 5FH, U.K  
Tel: +44-1628-651-700, Fax: +44-1628-651-804

**Renesas Electronics Europe GmbH**  
Arcadiastrasse 10, 40472 Düsseldorf, Germany  
Tel: +49-211-6503-0, Fax: +49-211-6503-1327

**Renesas Electronics (China) Co., Ltd.**  
Room 1709 Quantum Plaza, No.27 ZhichunLu, Haidian District, Beijing, 100191 P. R. China  
Tel: +86-10-8235-1155, Fax: +86-10-8235-7679

**Renesas Electronics (Shanghai) Co., Ltd.**  
Unit 301, Tower A, Central Towers, 555 Langao Road, Putuo District, Shanghai, 200333 P. R. China  
Tel: +86-21-2226-0888, Fax: +86-21-2226-0999

**Renesas Electronics Hong Kong Limited**  
Unit 1601-1611, 16/F., Tower 2, Grand Century Place, 193 Prince Edward Road West, Mongkok, Kowloon, Hong Kong  
Tel: +852-2265-6688, Fax: +852-2886-9022

**Renesas Electronics Taiwan Co., Ltd.**  
13F, No. 363, Fu Shing North Road, Taipei 10543, Taiwan  
Tel: +886-2-8175-9600, Fax: +886-2-8175-9670

**Renesas Electronics Singapore Pte. Ltd.**  
80 Bendemeer Road, Unit #06-02 Hyflux Innovation Centre, Singapore 339949  
Tel: +65-6213-0200, Fax: +65-6213-0300

**Renesas Electronics Malaysia Sdn.Bhd.**  
Unit 1207, Block B, Menara Amcorp, Amcorp Trade Centre, No. 18, Jln Persiaran Barat, 46050 Petaling Jaya, Selangor Darul Ehsan, Malaysia  
Tel: +60-3-7955-9390, Fax: +60-3-7955-9510

**Renesas Electronics India Pvt. Ltd.**  
No.777C, 100 Feet Road, HAL 2nd Stage, Indiranagar, Bangalore 560 038, India  
Tel: +91-80-67208700, Fax: +91-80-67208777

**Renesas Electronics Korea Co., Ltd.**  
17F, KAMCO Yangjae Tower, 262, Gangnam-daero, Gangnam-gu, Seoul, 06265 Korea  
Tel: +82-2-558-3737, Fax: +82-2-558-5338