

RA8M1 Group

Evaluation Kit for RA8M1 Microcontroller Group
EK-RA8M1
Quick Start Guide

Renesas RA Family
RA8 Series

All information contained in these materials, including products and product specifications, represents information on the product at the time of publication and is subject to change by Renesas Electronics Corp. without notice. Please review the latest information published by Renesas Electronics Corp. through various means, including the Renesas Electronics Corp. website (<https://www.renesas.com>).

Notice

1. Descriptions of circuits, software and other related information in this document are provided only to illustrate the operation of semiconductor products and application examples. You are fully responsible for the incorporation or any other use of the circuits, software, and information in the design of your product or system. Renesas Electronics disclaims any and all liability for any losses and damages incurred by you or third parties arising from the use of these circuits, software, or information.
2. Renesas Electronics hereby expressly disclaims any warranties against and liability for infringement or any other claims involving patents, copyrights, or other intellectual property rights of third parties, by or arising from the use of Renesas Electronics products or technical information described in this document, including but not limited to, the product data, drawings, charts, programs, algorithms, and application examples.
3. No license, express, implied or otherwise, is granted hereby under any patents, copyrights or other intellectual property rights of Renesas Electronics or others.
4. You shall be responsible for determining what licenses are required from any third parties, and obtaining such licenses for the lawful import, export, manufacture, sales, utilization, distribution or other disposal of any products incorporating Renesas Electronics products, if required.
5. You shall not alter, modify, copy, or reverse engineer any Renesas Electronics product, whether in whole or in part. Renesas Electronics disclaims any and all liability for any losses or damages incurred by you or third parties arising from such alteration, modification, copying or reverse engineering.
6. Renesas Electronics products are classified according to the following two quality grades: "Standard" and "High Quality". The intended applications for each Renesas Electronics product depends on the product's quality grade, as indicated below.

"Standard": Computers; office equipment; communications equipment; test and measurement equipment; audio and visual equipment; home electronic appliances; machine tools; personal electronic equipment; industrial robots; etc.

"High Quality": Transportation equipment (automobiles, trains, ships, etc.); traffic control (traffic lights); large-scale communication equipment; key financial terminal systems; safety control equipment; etc.

Unless expressly designated as a high reliability product or a product for harsh environments in a Renesas Electronics data sheet or other Renesas Electronics document, Renesas Electronics products are not intended or authorized for use in products or systems that may pose a direct threat to human life or bodily injury (artificial life support devices or systems; surgical implantations; etc.), or may cause serious property damage (space system; undersea repeaters; nuclear power control systems; aircraft control systems; key plant systems; military equipment; etc.). Renesas Electronics disclaims any and all liability for any damages or losses incurred by you or any third parties arising from the use of any Renesas Electronics product that is inconsistent with any Renesas Electronics data sheet, user's manual or other Renesas Electronics document.
7. No semiconductor product is absolutely secure. Notwithstanding any security measures or features that may be implemented in Renesas Electronics hardware or software products, Renesas Electronics shall have absolutely no liability arising out of any vulnerability or security breach, including but not limited to any unauthorized access to or use of a Renesas Electronics product or a system that uses a Renesas Electronics product. RENESAS ELECTRONICS DOES NOT WARRANT OR GUARANTEE THAT RENESAS ELECTRONICS PRODUCTS, OR ANY SYSTEMS CREATED USING RENESAS ELECTRONICS PRODUCTS WILL BE INVULNERABLE OR FREE FROM CORRUPTION, ATTACK, VIRUSES, INTERFERENCE, HACKING, DATA LOSS OR THEFT, OR OTHER SECURITY INTRUSION ("Vulnerability Issues"). RENESAS ELECTRONICS DISCLAIMS ANY AND ALL RESPONSIBILITY OR LIABILITY ARISING FROM OR RELATED TO ANY VULNERABILITY ISSUES. FURTHERMORE, TO THE EXTENT PERMITTED BY APPLICABLE LAW, RENESAS ELECTRONICS DISCLAIMS ANY AND ALL WARRANTIES, EXPRESS OR IMPLIED, WITH RESPECT TO THIS DOCUMENT AND ANY RELATED OR ACCOMPANYING SOFTWARE OR HARDWARE, INCLUDING BUT NOT LIMITED TO THE IMPLIED WARRANTIES OF MERCHANTABILITY, OR FITNESS FOR A PARTICULAR PURPOSE.
8. When using Renesas Electronics products, refer to the latest product information (data sheets, user's manuals, application notes, "General Notes for Handling and Using Semiconductor Devices" in the reliability handbook, etc.), and ensure that usage conditions are within the ranges specified by Renesas Electronics with respect to maximum ratings, operating power supply voltage range, heat dissipation characteristics, installation, etc. Renesas Electronics disclaims any and all liability for any malfunctions, failure or accident arising out of the use of Renesas Electronics products outside of such specified ranges.
9. Although Renesas Electronics endeavors to improve the quality and reliability of Renesas Electronics products, semiconductor products have specific characteristics, such as the occurrence of failure at a certain rate and malfunctions under certain use conditions. Unless designated as a high reliability product or a product for harsh environments in a Renesas Electronics data sheet or other Renesas Electronics document, Renesas Electronics products are not subject to radiation resistance design. You are responsible for implementing safety measures to guard against the possibility of bodily injury, injury or damage caused by fire, and/or danger to the public in the event of a failure or malfunction of Renesas Electronics products, such as safety design for hardware and software, including but not limited to redundancy, fire control and malfunction prevention, appropriate treatment for aging degradation or any other appropriate measures. Because the evaluation of microcomputer software alone is very difficult and impractical, you are responsible for evaluating the safety of the final products or systems manufactured by you.
10. Please contact a Renesas Electronics sales office for details as to environmental matters such as the environmental compatibility of each Renesas Electronics product. You are responsible for carefully and sufficiently investigating applicable laws and regulations that regulate the inclusion or use of controlled substances, including without limitation, the EU RoHS Directive, and using Renesas Electronics products in compliance with all these applicable laws and regulations. Renesas Electronics disclaims any and all liability for damages or losses occurring as a result of your noncompliance with applicable laws and regulations.
11. Renesas Electronics products and technologies shall not be used for or incorporated into any products or systems whose manufacture, use, or sale is prohibited under any applicable domestic or foreign laws or regulations. You shall comply with any applicable export control laws and regulations promulgated and administered by the governments of any countries asserting jurisdiction over the parties or transactions.
12. It is the responsibility of the buyer or distributor of Renesas Electronics products, or any other party who distributes, disposes of, or otherwise sells or transfers the product to a third party, to notify such third party in advance of the contents and conditions set forth in this document.
13. This document shall not be reprinted, reproduced or duplicated in any form, in whole or in part, without prior written consent of Renesas Electronics.
14. Please contact a Renesas Electronics sales office if you have any questions regarding the information contained in this document or Renesas Electronics products.

(Note1) "Renesas Electronics" as used in this document means Renesas Electronics Corporation and also includes its directly or indirectly controlled subsidiaries.

(Note2) "Renesas Electronics product(s)" means any product developed or manufactured by or for Renesas Electronics.

(Rev.5.0-1 October 2020)

Corporate Headquarters

TOYOSU FORESIA, 3-2-24 Toyosu,
Koto-ku, Tokyo 135-0061, Japan
www.renesas.com

Trademarks

Renesas and the Renesas logo are trademarks of Renesas Electronics Corporation. All trademarks and registered trademarks are the property of their respective owners.

Contact information

For further information on a product, technology, the most up-to-date version of a document, or your nearest sales office, please visit:
www.renesas.com/contact/.

General Precautions in the Handling of Microprocessing Unit and Microcontroller Unit Products

The following usage notes are applicable to all Microprocessing unit and Microcontroller unit products from Renesas. For detailed usage notes on the products covered by this document, refer to the relevant sections of the document as well as any technical updates that have been issued for the products.

1. Precaution against Electrostatic Discharge (ESD)

A strong electrical field, when exposed to a CMOS device, can cause destruction of the gate oxide and ultimately degrade the device operation. Steps must be taken to stop the generation of static electricity as much as possible, and quickly dissipate it when it occurs. Environmental control must be adequate. When it is dry, a humidifier should be used. This is recommended to avoid using insulators that can easily build up static electricity. Semiconductor devices must be stored and transported in an anti-static container, static shielding bag or conductive material. All test and measurement tools including work benches and floors must be grounded. The operator must also be grounded using a wrist strap. Semiconductor devices must not be touched with bare hands. Similar precautions must be taken for printed circuit boards with mounted semiconductor devices.

2. Processing at power-on

The state of the product is undefined at the time when power is supplied. The states of internal circuits in the LSI are indeterminate and the states of register settings and pins are undefined at the time when power is supplied. In a finished product where the reset signal is applied to the external reset pin, the states of pins are not guaranteed from the time when power is supplied until the reset process is completed. In a similar way, the states of pins in a product that is reset by an on-chip power-on reset function are not guaranteed from the time when power is supplied until the power reaches the level at which resetting is specified.

3. Input of signal during power-off state

Do not input signals or an I/O pull-up power supply while the device is powered off. The current injection that results from input of such a signal or I/O pull-up power supply may cause malfunction and the abnormal current that passes in the device at this time may cause degradation of internal elements. Follow the guideline for input signal during power-off state as described in your product documentation.

4. Handling of unused pins

Handle unused pins in accordance with the directions given under handling of unused pins in the manual. The input pins of CMOS products are generally in the high-impedance state. In operation with an unused pin in the open-circuit state, extra electromagnetic noise is induced in the vicinity of the LSI, an associated shoot-through current flows internally, and malfunctions occur due to the false recognition of the pin state as an input signal become possible.

5. Clock signals

After applying a reset, only release the reset line after the operating clock signal becomes stable. When switching the clock signal during program execution, wait until the target clock signal is stabilized. When the clock signal is generated with an external resonator or from an external oscillator during a reset, ensure that the reset line is only released after full stabilization of the clock signal. Additionally, when switching to a clock signal produced with an external resonator or by an external oscillator while program execution is in progress, wait until the target clock signal is stable.

6. Voltage application waveform at input pin

Waveform distortion due to input noise or a reflected wave may cause malfunction. If the input of the CMOS device stays in the area between V_{IL} (Max.) and V_{IH} (Min.) due to noise, for example, the device may malfunction. Take care to prevent chattering noise from entering the device when the input level is fixed, and also in the transition period when the input level passes through the area between V_{IL} (Max.) and V_{IH} (Min.).

7. Prohibition of access to reserved addresses

Access to reserved addresses is prohibited. The reserved addresses are provided for possible future expansion of functions. Do not access these addresses as the correct operation of the LSI is not guaranteed.

8. Differences between products

Before changing from one product to another, for example to a product with a different part number, confirm that the change will not lead to problems. The characteristics of a microprocessing unit or microcontroller unit products in the same group but having a different part number might differ in terms of internal memory capacity, layout pattern, and other factors, which can affect the ranges of electrical characteristics, such as characteristic values, operating margins, immunity to noise, and amount of radiated noise. When changing to a product with a different part number, implement a system-evaluation test for the given product.

Renesas EK-RA8M1 Disclaimer

By using this EK-RA8M1, the User accepts the following terms, which are in addition to, and control in the event of disagreement, with Renesas' General Terms and Conditions available at [renesas.com/legal-notices](https://www.renesas.com/legal-notices).

The EK-RA8M1 is not guaranteed to be error free, and the entire risk as to the results and performance of the EK-RA8M1 is assumed by the User. The EK-RA8M1 is provided by Renesas on an "as is" basis without warranty of any kind whether express or implied, including but not limited to the implied warranties of good workmanship, fitness for a particular purpose, title, merchantability, and non-infringement of intellectual property rights. Renesas expressly disclaims any implied warranty.

Renesas does not consider the EK-RA8M1 to be a finished product and therefore the EK-RA8M1 may not comply with some requirements applicable to finished products, including, but not limited to recycling, restricted substances and electromagnetic compatibility regulations. Refer to Certifications section, for information about certifications and compliance information for the EK-RA8M1. It is the kit User's responsibility to make sure the kit meets any local requirements applicable to their region.

Renesas or its affiliates shall in no event be liable for any loss of profit, loss of data, loss of contract, loss of business, damage to reputation or goodwill, any economic loss, any reprogramming or recall costs (whether the foregoing losses are direct or indirect) nor shall Renesas or its affiliates be liable for any other direct or indirect special, incidental or consequential damages arising out of or in relation to the use of this EK-RA8M1, even if Renesas or its affiliates have been advised of the possibility of such damages.

Renesas has used reasonable care in preparing the information included in this document, but Renesas does not warrant that such information is error free nor does Renesas guarantee an exact match for every application or parameter to part numbers designated by other vendors listed herein. The information provided in this document is intended solely to enable the use of Renesas products. No express or implied license to any intellectual property right is granted by this document or in connection with the sale of Renesas products. Renesas reserves the right to make changes to specifications and product descriptions at any time without notice. Renesas assumes no liability for any damages incurred by you resulting from errors in or omissions from the information included herein. Renesas cannot verify, and assumes no liability for, the accuracy of information available on another company's website.

Precautions

This Evaluation Kit is only intended for use in a laboratory environment under ambient temperature and humidity conditions. A safe separation distance should be used between this and any sensitive equipment. Its use outside the laboratory, classroom, study area, or similar such area invalidates conformity with the protection requirements of the Electromagnetic Compatibility Directive and could lead to prosecution.

The product generates, uses, and can radiate radio frequency energy and may cause harmful interference to radio communications. There is no guarantee that interference will not occur in a particular installation. If this equipment causes harmful interference to radio or television reception, which can be determined by turning the equipment off or on, you are encouraged to try to correct the interference by one or more of the following measures:

- Ensure attached cables do not lie across the equipment.
- Reorient the receiving antenna.
- Increase the distance between the equipment and the receiver.
- Connect the equipment into an outlet on a circuit different from that which the receiver is connected.
- Power down the equipment when not in use.
- Consult the dealer or an experienced radio/TV technician for help.

Note: It is recommended that wherever possible shielded interface cables are used.

The product is potentially susceptible to certain EMC phenomena. To mitigate against them it is recommended that the following measures be undertaken:

- The user is advised that mobile phones should not be used within 10 m of the product when in use.
- The user is advised to take ESD precautions when handling the equipment.

The Evaluation Kit does not represent an ideal reference design for an end product and does not fulfill the regulatory standards for an end product.

Renesas RA Family

EK-RA8M1
Contents

1. Introduction.....	7
1.1 Assumptions and Advisory Notes.....	7
2. Kit Contents	7
3. Overview of the Quick Start Example Project.....	8
3.1 Quick Start Example Project Flow.....	8
4. Running the Quick Start Example Project	9
4.1 Connecting and Powering Up the EK-RA8M1 Board	9
4.2 Running the Quick Start Example Project.....	10
5. Customizing the Quick Start Example Project	20
5.1 Downloading and Installing Software and Development Tools	20
5.2 Downloading and Importing the Quick Start Example Project.....	20
5.3 Modifying, Generating, and Building the Quick Start Example Project	24
5.4 DHCP and Static IP settings	26
5.5 Setting Up Debug Connection between the EK-RA8M1 board and Host PC	27
5.6 Downloading and Running the Modified Quick Start Example Project	28
5.7 Firewall Dialog.....	29
6. Next Steps	30
7. Website and Support.....	30
Revision History	31

Figures

Figure 1. EK-RA8M1 Kit Contents.....	7
Figure 2. Quick Start Example Project Flow.....	8
Figure 3. Connecting the EK-RA8M1 Board to the Host PC via USB Full Speed Port.....	9
Figure 4. USB Serial Device in Windows Device Manager	10
Figure 5. Selecting the Serial Port on Tera Term.....	11
Figure 6. Select 115200 on the Speed Pulldown	11
Figure 7. Welcome and Main Menu.....	12
Figure 8. Kit Information	12
Figure 9. Web Server.....	12
Figure 10. Using DHCP	13

Figure 11. Using Static IP	13
Figure 12. Browser View	14
Figure 13. Network Name Lookup.....	15
Figure 14. Using DHCP	15
Figure 15. Using Static IP.....	16
Figure 16. External Memory Read Write	17
Figure 17. Performance Data	17
Figure 18. Cryptography using USB High Speed FAT32.....	18
Figure 19. Abort Cryptography	18
Figure 20. Cryptography Successful	19
Figure 21. Next Steps	19
Figure 22. Creating a New Workspace.....	20
Figure 23. Launching the Workspace.....	21
Figure 24. Importing the Project	21
Figure 25. Importing Existing Projects into the Workspace.....	22
Figure 26. Clicking Next to Import Existing Projects into the Workspace	22
Figure 27. Selecting the Root Directory.....	23
Figure 28. Finishing Importing the Quick Start Example Project.....	23
Figure 29. Opening the Configurator	24
Figure 30. Open Perspective.....	24
Figure 31. Modifying the Configuration Settings	25
Figure 32. Saving the Configuration Changes	25
Figure 33. Building the Project	26
Figure 34. Successful Build Output	26
Figure 35. DHCP Setting in FreeRTOS + TCP Stack	26
Figure 36. Connecting the EK-RA8M1 Board to the Host PC via USB Debug Port	27
Figure 37. Selecting the Debug Option	28
Figure 38. Selecting the Debug Image	28
Figure 39. Opening the Debug Perspective	29
Figure 40. Executing the Project	29

1. Introduction

This Quick Start Guide (QSG) provides:

- An overview of the Quick Start example project that the EK-RA8M1 board comes pre-programmed with.
- Instructions for running the Quick Start example project.
- Instructions for importing, modifying, and building the Quick Start example project using Flexible Software Package (FSP) and e² studio Integrated Development Environment (IDE).

1.1 Assumptions and Advisory Notes

1. **Tool experience:** It is assumed that the user has prior experience working with IDEs such as e² studio and terminal emulation programs such as Tera Term.
2. **Subject knowledge:** It is assumed that the user has basic knowledge about microcontrollers, embedded systems, and FSP to modify the example project described in this document.
3. **Default jumper settings:** Prior to running the Quick Start example project or programming the EK-RA8M1 board, default jumper settings must be used. Refer to the EK-RA8M1 user's manual for the default jumper configuration.
4. **Screenshots:** The screen shots provided throughout this document are for reference. The actual screen content may differ depending on the version of software and development tools used.

2. Kit Contents

The following components are included in the kit:

1. EK-RA8M1 board
2. Micro USB device cable (type-A male to micro-B male)
3. Micro USB host cable (type-A female to micro-B male)
4. Ethernet patch cable

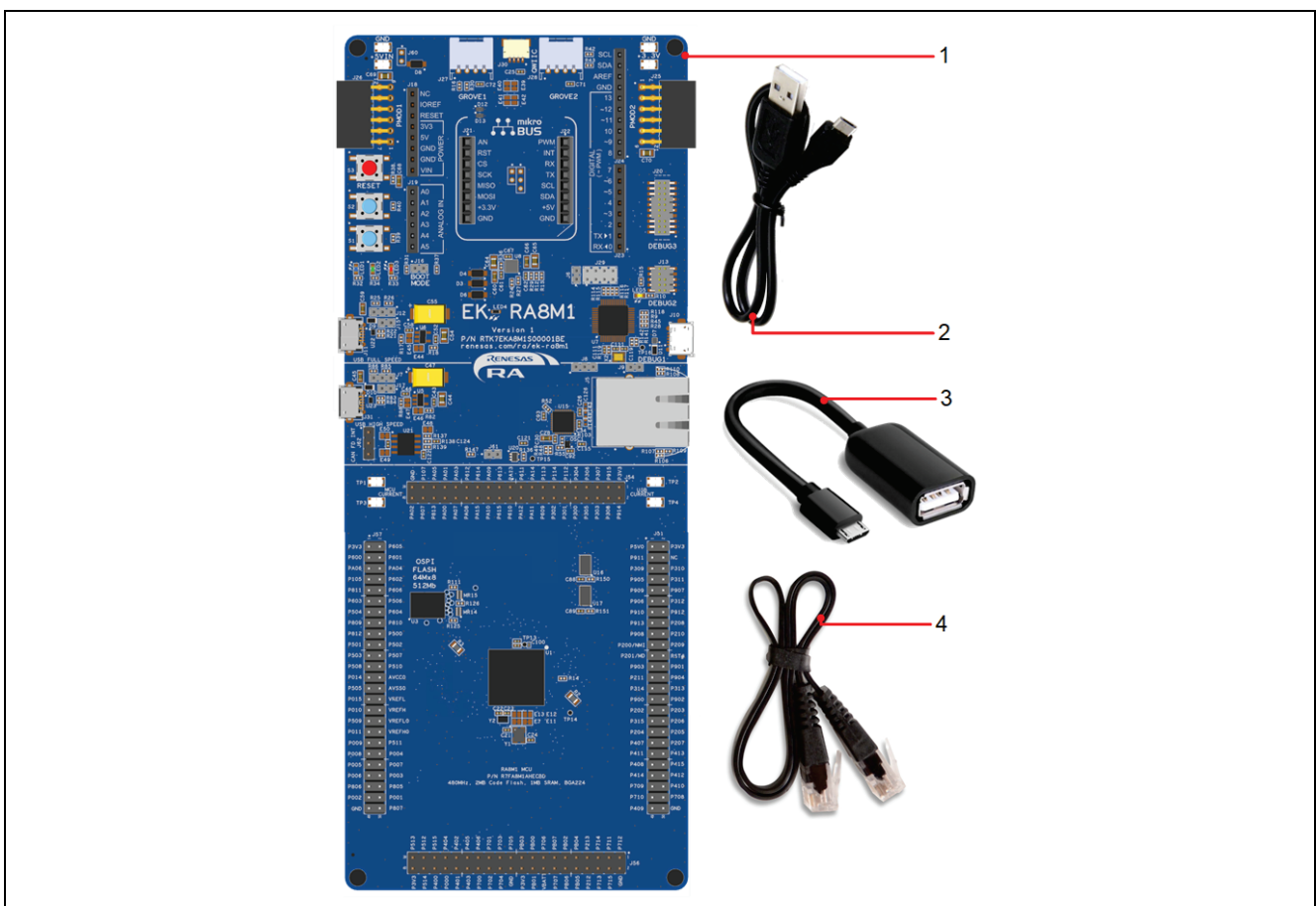


Figure 1. EK-RA8M1 Kit Contents

3. Overview of the Quick Start Example Project

The Quick Start example project allows the user to change the frequency and intensity of the on-board user LED1 (blue) using the user buttons (S1 and S2). The supported frequencies are 1 Hz, 5 Hz, and 10 Hz and the supported intensities are 10%, 50%, and 90%.

When the EK-RA8M1 board running the Quick Start example project is connected to a host PC via USB as a Full Speed CDC Device, the kit information, MCU die temperature, and user LED blinking frequency are displayed on a terminal console.

3.1 Quick Start Example Project Flow

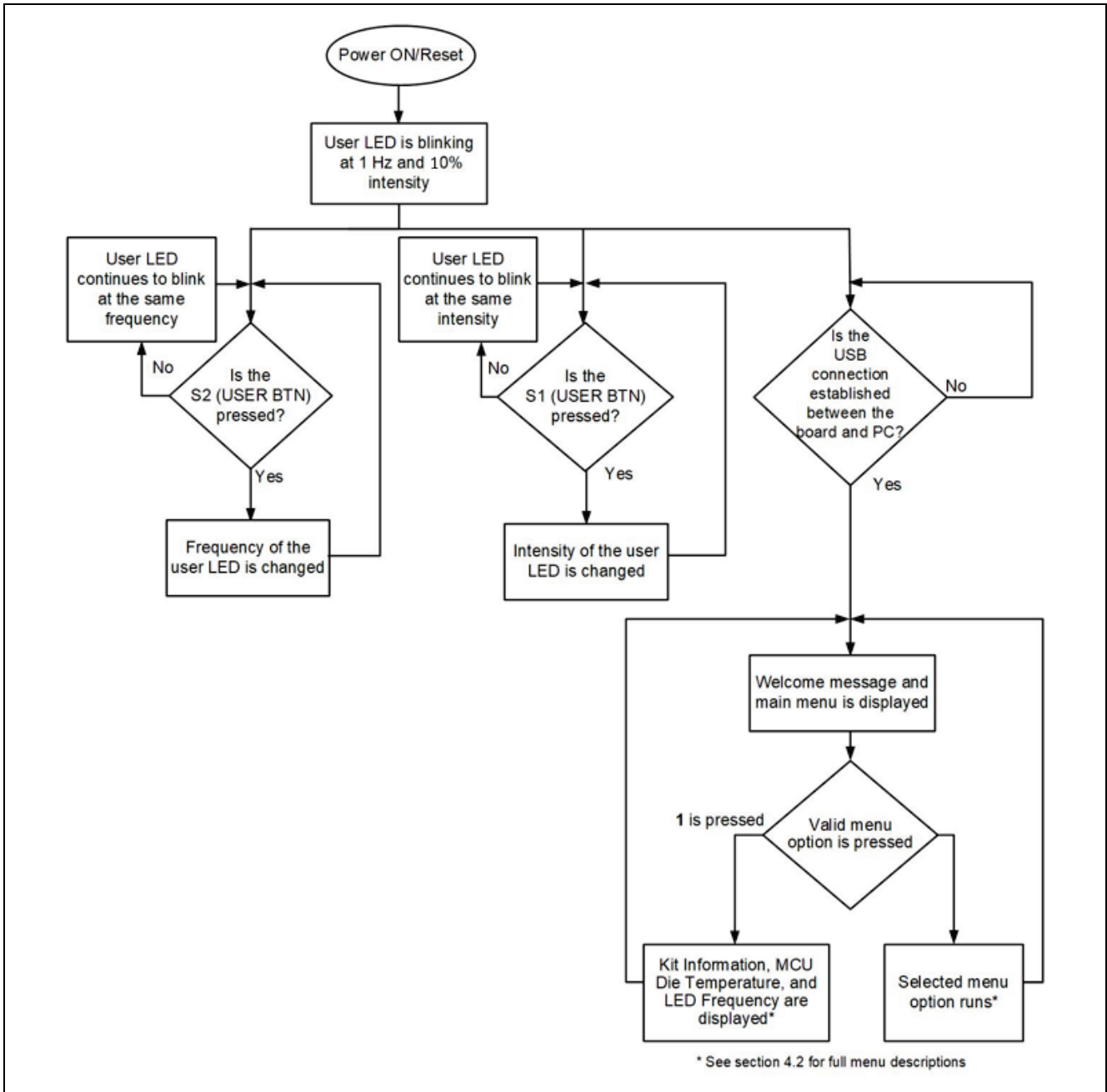


Figure 2. Quick Start Example Project Flow

4. Quick Start Example Project

This section lists the requirements and instructions to power up the EK-RA8M1 board and run the Quick Start example project.

Hardware Requirements

- EK-RA8M1 board
- Micro USB device cable
- Micro USB host cable
- Ethernet cable
- USB flash drive
- A PC with at least 1 USB port
- An Ethernet router allowing 2 or more connections

Software Requirements

- Windows® 10 operating system
- USB Serial Drivers (included in Windows 10)
- Tera Term (or similar) terminal console application

4.1 Connecting and Powering Up the EK-RA8M1 Board

1. Check that J12 is set to link pins 2-3 and that J15 link is closed.
2. Connect the micro USB end of the micro USB device cable to micro-AB USB Full Speed port (J11) of the EK-RA8M1 board.
3. Connect the other end of this cable to the USB port of the host PC. Power LED (LED4) on the EK-RA8M1 board lights up white, indicating that the EK-RA8M1 board is powered on.

Note: If the EK-RA8M1 board is not powered through micro-AB USB Full Speed port (J11) and the host PC, then USB CDC functionality of the Quick Start example project cannot be fully demonstrated because of the absence of a USB Full Speed Device connection with the host PC.

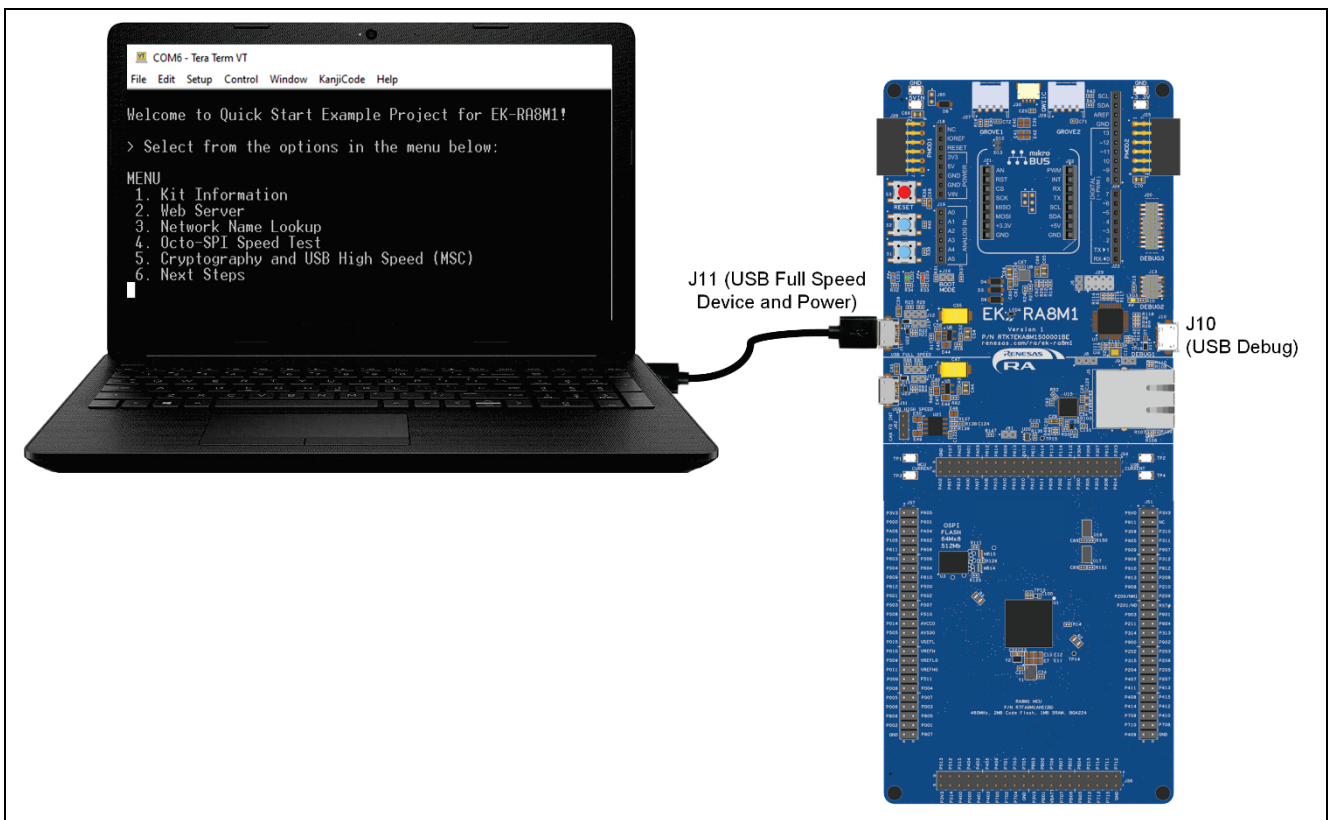


Figure 3. Connecting the EK-RA8M1 Board to the Host PC via USB Full Speed Port

4.2 Running the Quick Start Example Project

To run the Quick Start example project, use the following instructions:

1. On power up or RESET, the three user LEDs will take on the following states:
 - LED1 Blue - Blinking at 1 Hz frequency and at 10% intensity
 - LED2 Green – Steady, full intensity
 - LED3 Red – Off

Note: If the board is powered through micro-AB USB Full Speed DEBUG port (J10) and the host PC, debug LED (LED5) will blink or light up orange; this can be ignored for now.

2. Press the user button (S1) on the EK-RA8M1 board to change the intensity of the user LED1. With every press of the user button (S1), the intensity will switch from 10% to 50% to 90% and cycle back.
3. Press the user button (S2) on the EK-RA8M1 board to change the blinking frequency of the user LED1 (blue). With every press of the first user button (S2), the frequency will switch from 1 Hz to 5 Hz to 10 Hz and cycle back.
4. On the host PC, open Windows Device Manager. Expand **Ports (COM & LPT)**, locate **USB Serial Device (COMxx)** and note down the COM port number for reference in the next step.

Note: USB Serial Device drivers are required to communicate between the EK-RA8M1 board and the terminal application on the host PC.

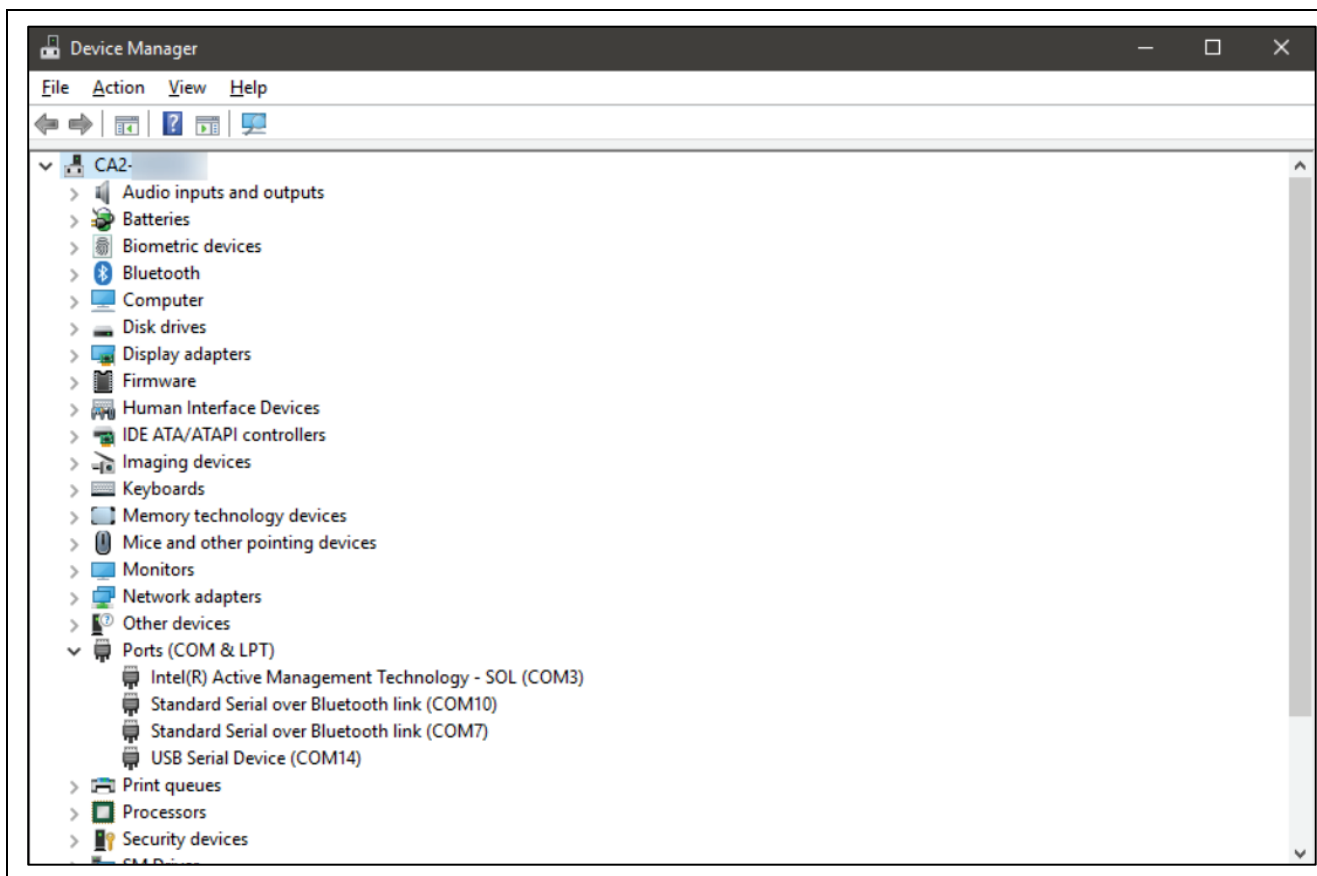


Figure 4. USB Serial Device in Windows Device Manager

- 5. Open Tera Term, select **Serial** and **COMxx: USB Serial Device (COMxx)** and click **OK**.

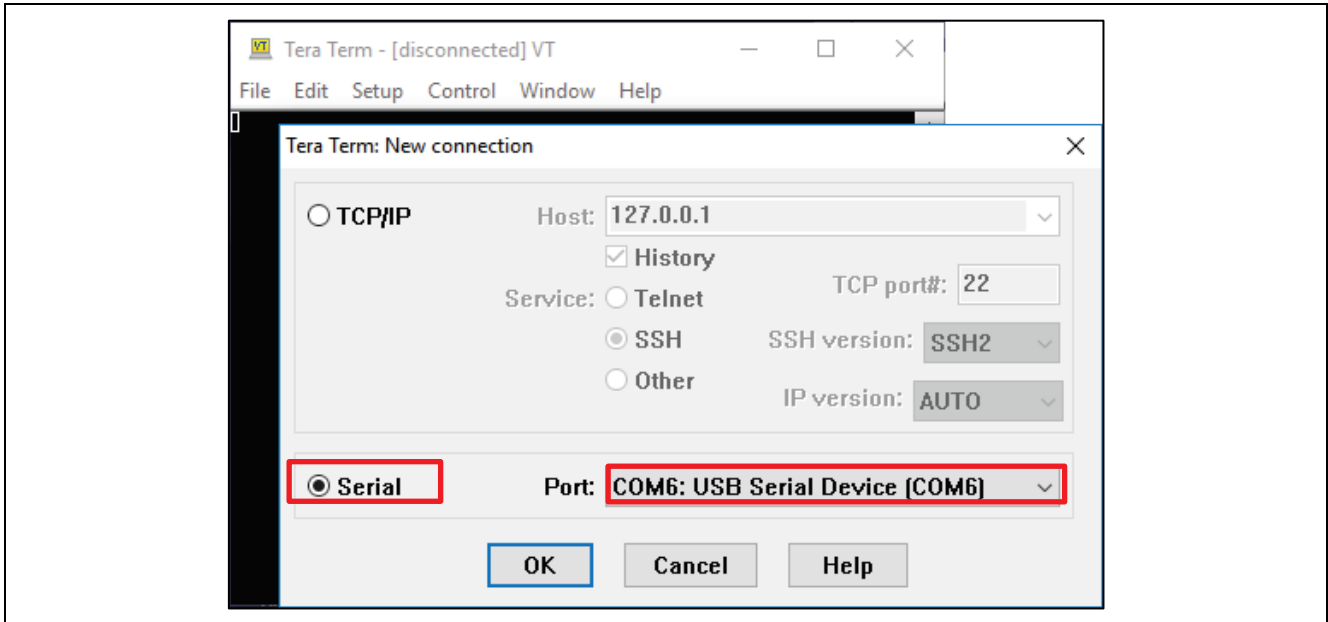


Figure 5. Selecting the Serial Port on Tera Term

- 6. Using the **Setup** menu pull-down, select **Serial port...** and ensure that the speed is set to 115200, as shown below.

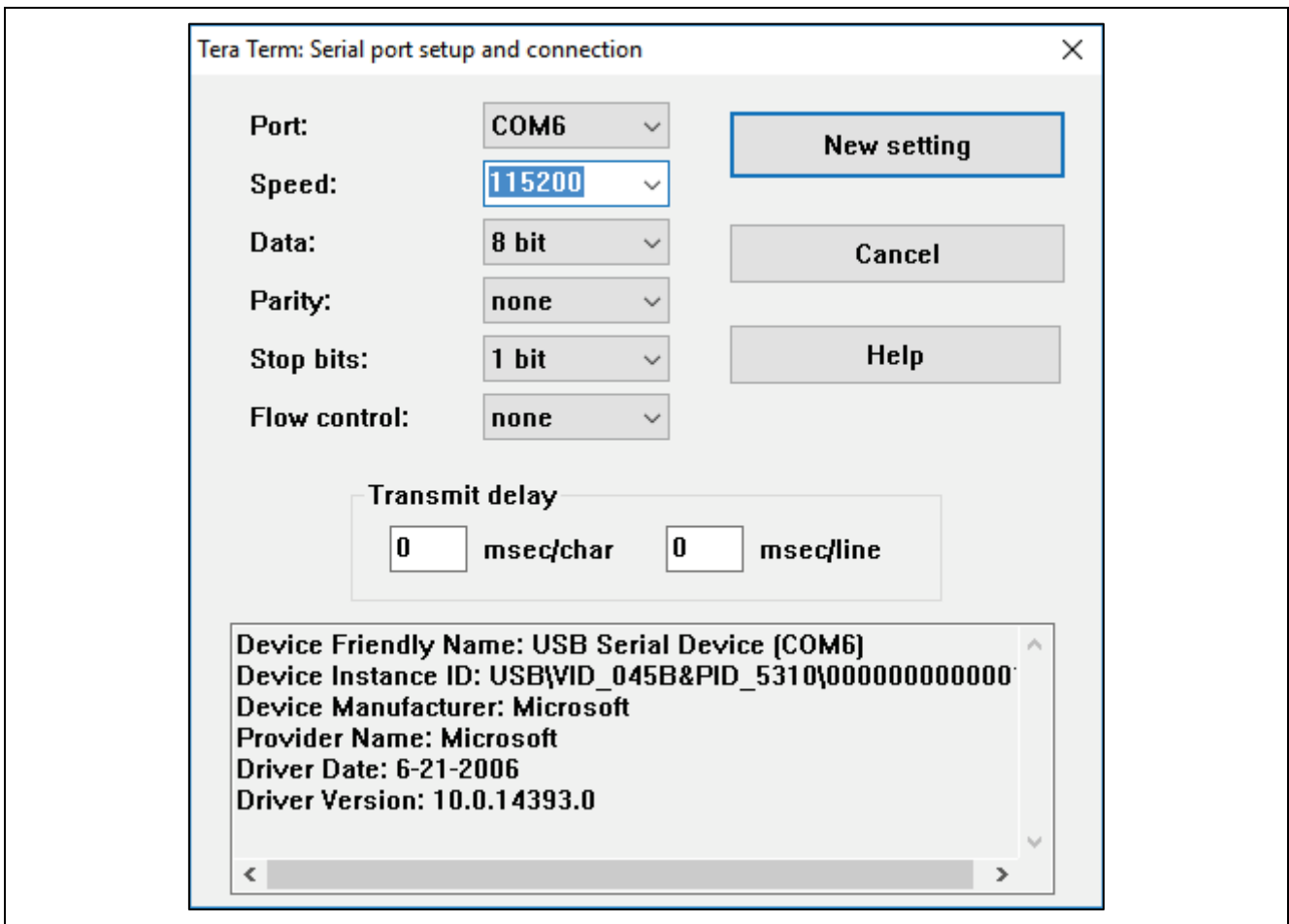
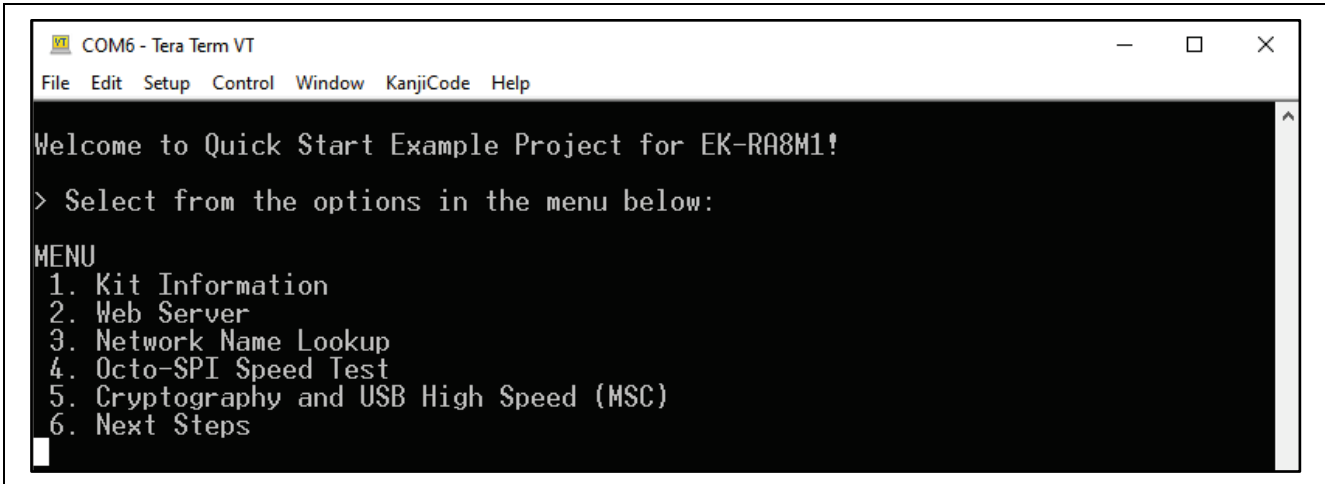


Figure 6. Select 115200 on the Speed Pulldown

7. Complete the connection. The 'welcome and main menu' screen will be displayed.



```

COM6 - Tera Term VT
File Edit Setup Control Window KanjiCode Help

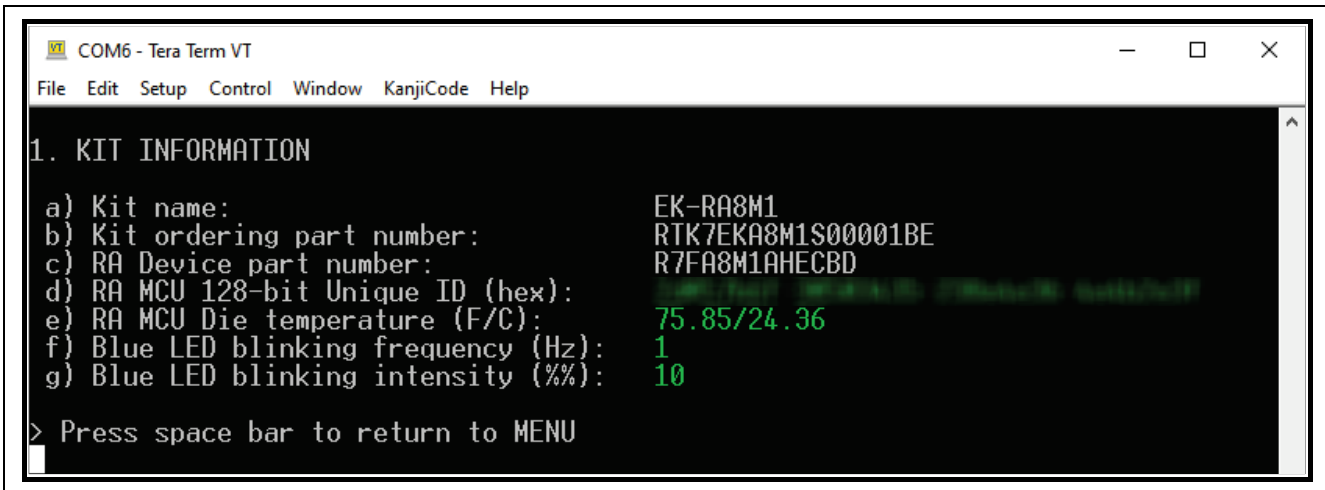
Welcome to Quick Start Example Project for EK-RA8M1!
> Select from the options in the menu below:

MENU
1. Kit Information
2. Web Server
3. Network Name Lookup
4. Octo-SPI Speed Test
5. Cryptography and USB High Speed (MSC)
6. Next Steps

```

Figure 7. Welcome and Main Menu

8. Press **1** to display the **Kit Information** including the kit name, ordering part number, part number, MCU ID, MCU die temperature, and the user LED's current blinking frequency and intensity.



```

COM6 - Tera Term VT
File Edit Setup Control Window KanjiCode Help

1. KIT INFORMATION

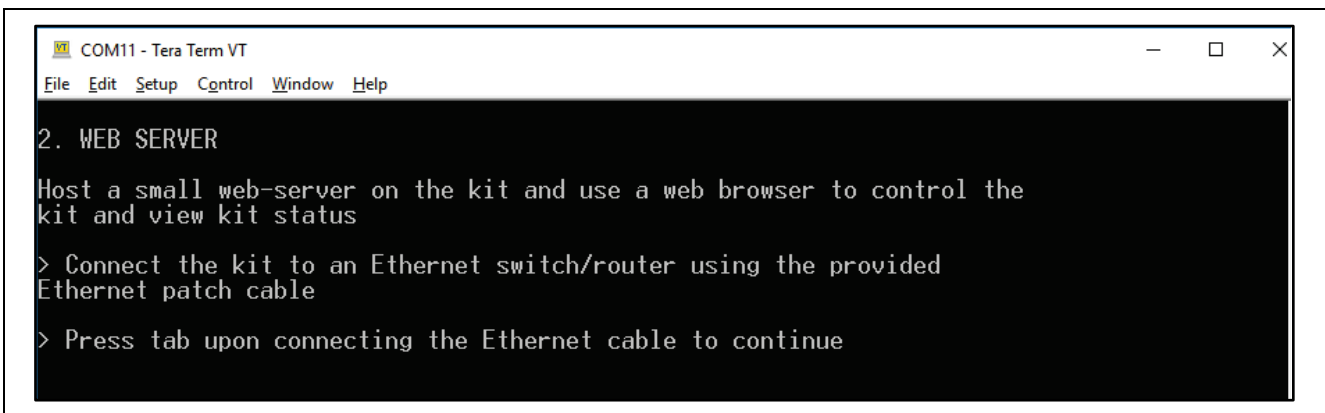
a) Kit name: EK-RA8M1
b) Kit ordering part number: RTK7EKA8M1S00001BE
c) RA Device part number: R7FA8M1AHECBD
d) RA MCU 128-bit Unique ID (hex): 00000000000000000000000000000000
e) RA MCU Die temperature (F/C): 75.85/24.36
f) Blue LED blinking frequency (Hz): 1
g) Blue LED blinking intensity (%): 10

> Press space bar to return to MENU

```

Figure 8. Kit Information

9. Press **space** to return to the 'welcome and main menu' screen.
 10. Press **2** to display the **Web Server**. This application hosts a web server on the EK-RA8M1 kit showing communication with the host PC as a remote client.



```

COM11 - Tera Term VT
File Edit Setup Control Window Help

2. WEB SERVER

Host a small web-server on the kit and use a web browser to control the
kit and view kit status

> Connect the kit to an Ethernet switch/router using the provided
Ethernet patch cable

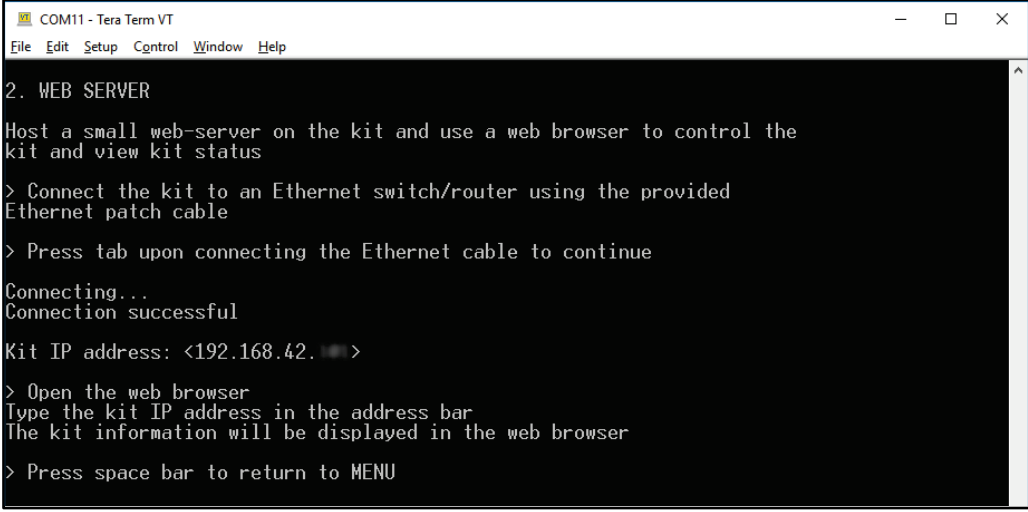
> Press tab upon connecting the Ethernet cable to continue

```

Figure 9. Web Server

11. Connect the Ethernet cable between the ethernet socket (J5) on your board and the router, check J61 is closed and press **tab**.

The EK-RA8M1 as supplied, is configured to use DHCP for IP address resolution. Upon successful connection the following is displayed.



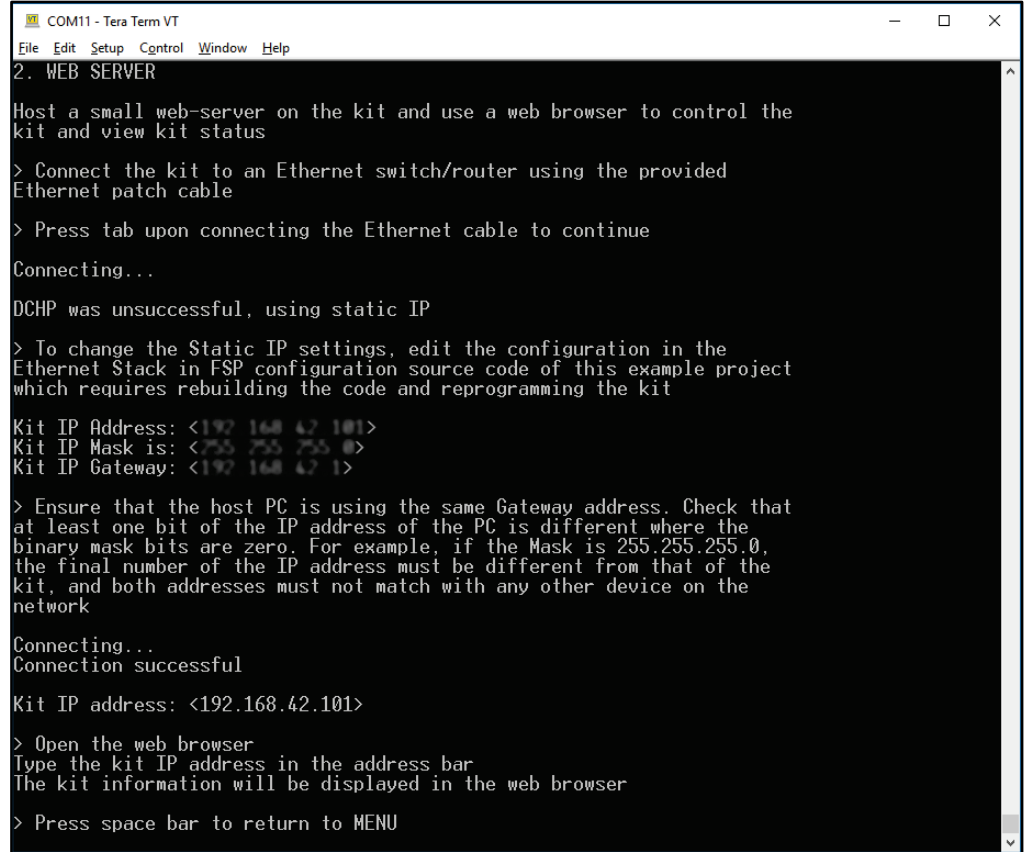
```

COM11 - Tera Term VT
File Edit Setup Control Window Help
2. WEB SERVER
Host a small web-server on the kit and use a web browser to control the
kit and view kit status
> Connect the kit to an Ethernet switch/router using the provided
Ethernet patch cable
> Press tab upon connecting the Ethernet cable to continue
Connecting...
Connection successful
Kit IP address: <192.168.42.101>
> Open the web browser
Type the kit IP address in the address bar
The kit information will be displayed in the web browser
> Press space bar to return to MENU

```

Figure 10. Using DHCP

If the DHCP fails to resolve a route or the DHCP server has been disabled, the application uses the static IP defined in the project. The following should be displayed.



```

COM11 - Tera Term VT
File Edit Setup Control Window Help
2. WEB SERVER
Host a small web-server on the kit and use a web browser to control the
kit and view kit status
> Connect the kit to an Ethernet switch/router using the provided
Ethernet patch cable
> Press tab upon connecting the Ethernet cable to continue
Connecting...
DCHP was unsuccessful, using static IP
> To change the Static IP settings, edit the configuration in the
Ethernet Stack in FSP configuration source code of this example project
which requires rebuilding the code and reprogramming the kit
Kit IP Address: <192.168.42.101>
Kit IP Mask is: <255.255.255.0>
Kit IP Gateway: <192.168.42.1>
> Ensure that the host PC is using the same Gateway address. Check that
at least one bit of the IP address of the PC is different where the
binary mask bits are zero. For example, if the Mask is 255.255.255.0,
the final number of the IP address must be different from that of the
kit, and both addresses must not match with any other device on the
network
Connecting...
Connection successful
Kit IP address: <192.168.42.101>
> Open the web browser
Type the kit IP address in the address bar
The kit information will be displayed in the web browser
> Press space bar to return to MENU

```

Figure 11. Using Static IP

Note: If desired, the user may configure DHCP/static IP and MAC address using the project configuration (see section 5.4). Save the configuration and re-build, download the project to see the effects of the changes.

- Once a successful network connection is established, open the web browser on the host PC. Type the IP address of the EK-RA8M1 kit as shown in the Tera Term window in the address bar of the web browser. The following should be displayed in the web browser.

Note: The white text on blue background below the Renesas logo are hyperlinks to useful kit-related webpages on Renesas.com. The host PC shall be connected the Internet in order to visit them.

RENEASAS

EK-RA8M1 Resources Flexible Software Package (FSP) RA Forum Help & Support

Welcome

EK-RA8M1

Evaluation Kit for RA8M1 MCU Group

Quick Start Example Project

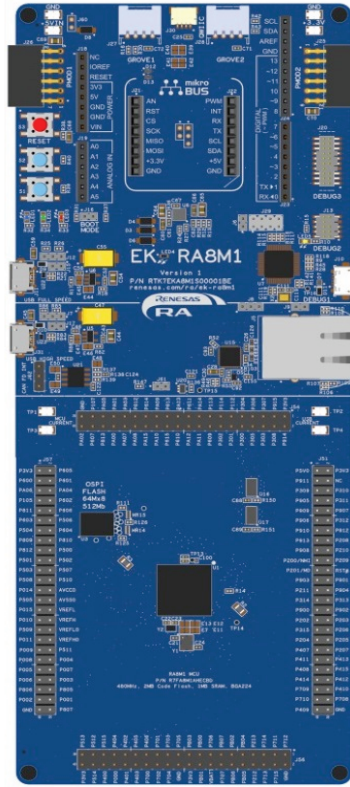
Introduction

This embedded web server is running on the RA8M1 MCU and is implemented by using Renesas Flexible Software Package, FreeRTOS+TCP and open source Webio. This web server demonstrates how users can easily create a professional, user-friendly and platform-independent user interface for products/applications that require remote control and monitoring.

Display Console

Device ID
 2d147270 - 30503436
 3c914e36 - 4e4b2e92

MCU Temperature (F): 77.66
 MCU Temperature (C): 25.36
 Blue LED Attributes
 Frequency (Hz): 1
 Intensity (%): 10



Control Panel

S1 User Switch 1

S2 User Switch 2

Instructions

- Press the physical user buttons S1 and/or S2 on the EK-RA8M1 board. The blue user LED's intensity and/or frequency will change. The intensity and/or frequency will refresh in the Display Console. This demonstrates the communication from the server to the client.
- Press the software user buttons S1 and/or S2 on the web server Control Panel. The blue user LED's intensity and/or frequency will change. The intensity and/or frequency will refresh in the Display Console. This demonstrates the communication from the client to the server.

Please refer to the EK-RA8M1 Quick Start Guide and Quick Start Example Project source code for more details.

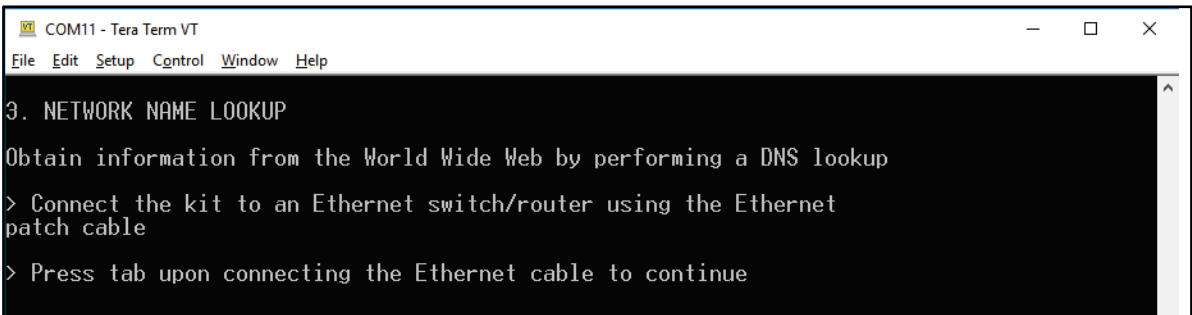
Figure 12. Browser View

13. Pressing the software User Switch S1 on the web page control panel adjusts the flash intensity of the LED1(blue).
14. Pressing the software User Switch S2 on the web page control panel adjusts the flash frequency of the LED1(blue).
15. In Tera Term, press **space** to return to the 'welcome and main menu' screen.

Note: Web site shall remain accessible until the board is reset.

16. Press **3** to display the **Network Name Lookup**. This application performs a DNS look up of renesas.com and pings it.

Note: When a connection to the World Wide Web is not provided the result of the DNS shall be provided by the router.



```
COM11 - Tera Term VT
File Edit Setup Control Window Help
3. NETWORK NAME LOOKUP
Obtain information from the World Wide Web by performing a DNS lookup
> Connect the kit to an Ethernet switch/router using the Ethernet
patch cable
> Press tab upon connecting the Ethernet cable to continue
```

Figure 13. Network Name Lookup

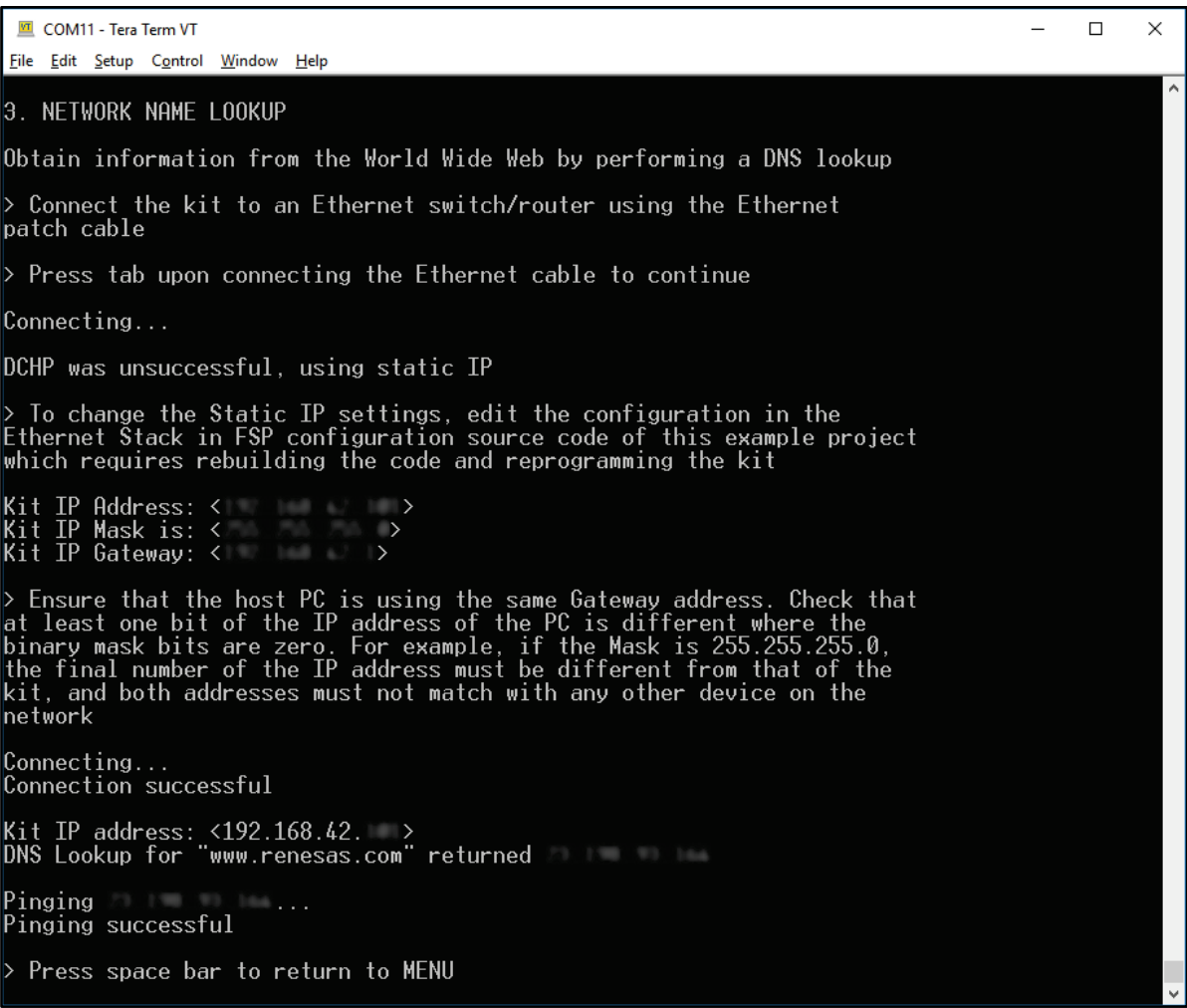
17. Connect the Ethernet cable (if not already connected) and press **tab**.
18. By default, the application is configured to use a DHCP server. Upon successful connection, the following is displayed.



```
COM11 - Tera Term VT
File Edit Setup Control Window Help
3. NETWORK NAME LOOKUP
Obtain information from the World Wide Web by performing a DNS lookup
> Connect the kit to an Ethernet switch/router using the Ethernet
patch cable
> Press tab upon connecting the Ethernet cable to continue
Connecting...
Connection successful
Kit IP address: <192.168.42.100>
DNS Lookup for "www.renesas.com" returned 73.198.75.100
Pinging 73.198.75.100...
Pinging successful
> Press space bar to return to MENU
```

Figure 14. Using DHCP

If the DHCP fails to resolve a route or the DHCP server has been disabled, the application uses the static IP defined in the project. The following should be displayed.

A screenshot of a terminal window titled "COM11 - Tera Term VT". The window has a menu bar with "File", "Edit", "Setup", "Control", "Window", and "Help". The terminal content shows a menu option "3. NETWORK NAME LOOKUP". The user selects this option, and the terminal displays instructions: "Obtain information from the World Wide Web by performing a DNS lookup", "> Connect the kit to an Ethernet switch/router using the Ethernet patch cable", and "> Press tab upon connecting the Ethernet cable to continue". The terminal then shows "Connecting...", "DHCP was unsuccessful, using static IP", and instructions to edit static IP settings in the FSP configuration source code. It prompts for "Kit IP Address", "Kit IP Mask is", and "Kit IP Gateway", with the user entering "192.168.42.100", "255.255.255.0", and "192.168.42.1" respectively. Further instructions include checking the host PC's gateway and performing a DNS lookup for "www.renesas.com". The terminal shows "Connecting...", "Connection successful", "Kit IP address: <192.168.42.100>", "DNS Lookup for 'www.renesas.com' returned 75.196.93.104", "Pinging 75.196.93.104...", and "Pinging successful". The final instruction is "> Press space bar to return to MENU".

```
COM11 - Tera Term VT
File Edit Setup Control Window Help

3. NETWORK NAME LOOKUP

Obtain information from the World Wide Web by performing a DNS lookup

> Connect the kit to an Ethernet switch/router using the Ethernet
patch cable

> Press tab upon connecting the Ethernet cable to continue

Connecting...

DHCP was unsuccessful, using static IP

> To change the Static IP settings, edit the configuration in the
Ethernet Stack in FSP configuration source code of this example project
which requires rebuilding the code and reprogramming the kit

Kit IP Address: < 192.168.42.100 >
Kit IP Mask is: < 255.255.255.0 >
Kit IP Gateway: < 192.168.42.1 >

> Ensure that the host PC is using the same Gateway address. Check that
at least one bit of the IP address of the PC is different where the
binary mask bits are zero. For example, if the Mask is 255.255.255.0,
the final number of the IP address must be different from that of the
kit, and both addresses must not match with any other device on the
network

Connecting...
Connection successful

Kit IP address: <192.168.42.100>
DNS Lookup for "www.renesas.com" returned 75.196.93.104

Pinging 75.196.93.104...
Pinging successful

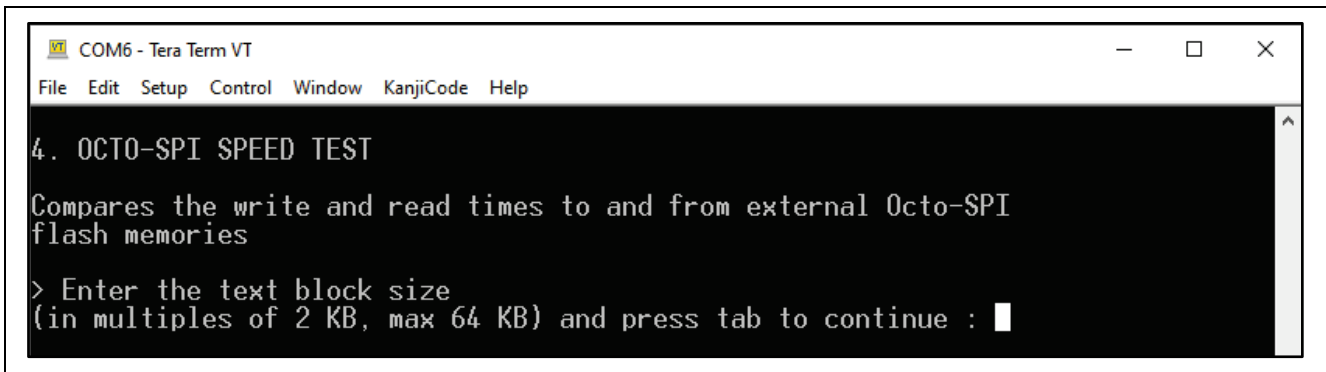
> Press space bar to return to MENU
```

Figure 15. Using Static IP

Note: If desired, the user may configure DHCP/static IP and MAC address using the project configuration (see section 5.4). Save the configuration and re-build, download the project to see the effects of the changes.

19. Press space to return to the 'welcome and main menu' screen.

20. Press **4** to display **Octo-SPI Speed Test**. This application demonstrates the read and write performance to and from the Octo-SPI flash memory.



```

COM6 - Tera Term VT
File Edit Setup Control Window KanjiCode Help

4. OCTO-SPI SPEED TEST

Compares the write and read times to and from external Octo-SPI
flash memories

> Enter the text block size
(in multiples of 2 KB, max 64 KB) and press tab to continue : █

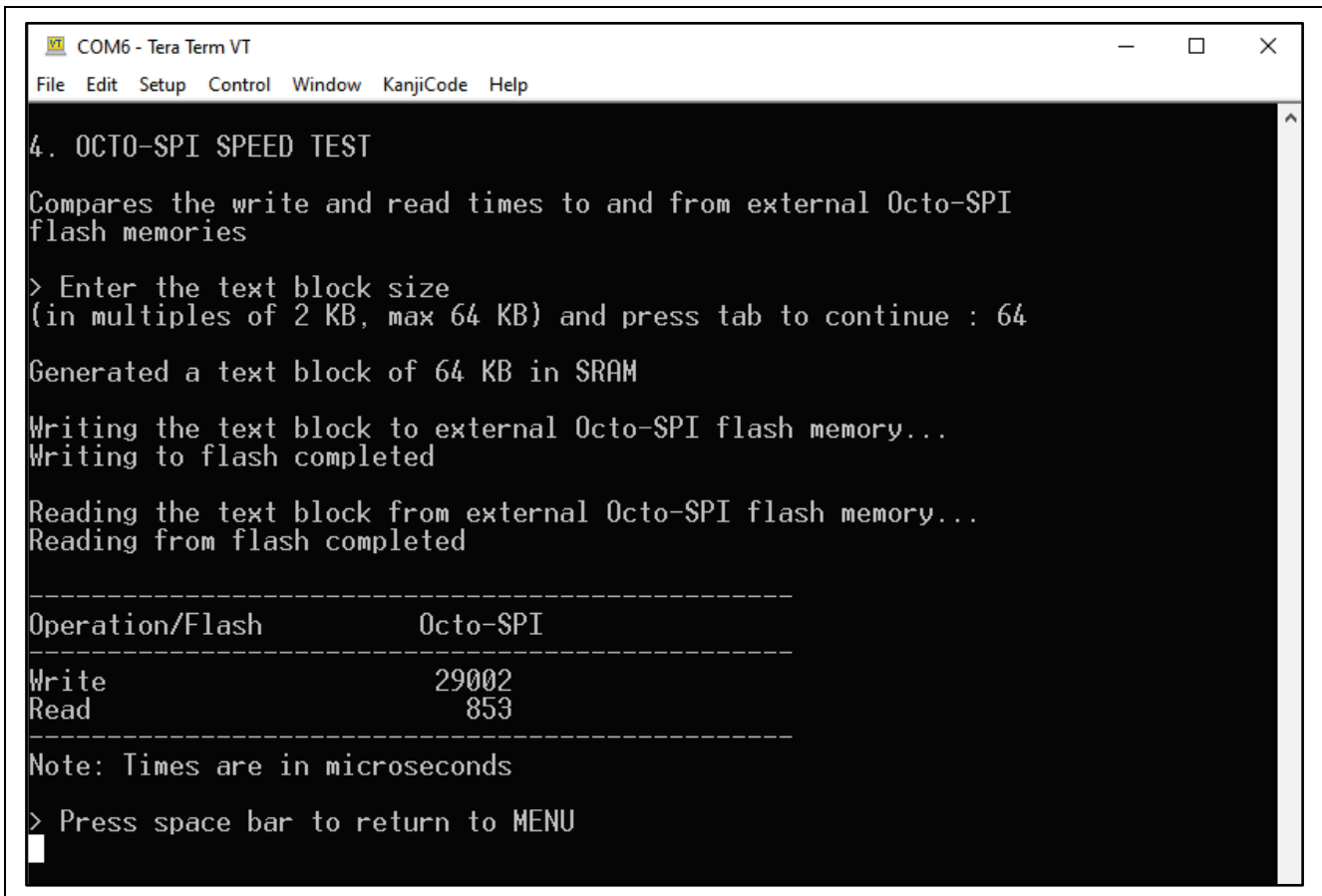
```

Figure 16. External Memory Read Write

21. Enter the block size in the range of 2 KB to 64 KB and press **tab**.

Note: If invalid input characters (that is, keys other than 0 to 9, **tab**, and **space**) or out of range values are entered, the error messages will appear. Re-enter the correct inputs and press **tab**. Pressing **space** will bring the 'welcome and main menu' screen. **Return** is an invalid character.

22. Once the block size is specified, the performance test is executed and the following is displayed.



```

COM6 - Tera Term VT
File Edit Setup Control Window KanjiCode Help

4. OCTO-SPI SPEED TEST

Compares the write and read times to and from external Octo-SPI
flash memories

> Enter the text block size
(in multiples of 2 KB, max 64 KB) and press tab to continue : 64

Generated a text block of 64 KB in SRAM

Writing the text block to external Octo-SPI flash memory...
Writing to flash completed

Reading the text block from external Octo-SPI flash memory...
Reading from flash completed

-----
Operation/Flash          Octo-SPI
-----
Write                    29002
Read                     853
-----

Note: Times are in microseconds

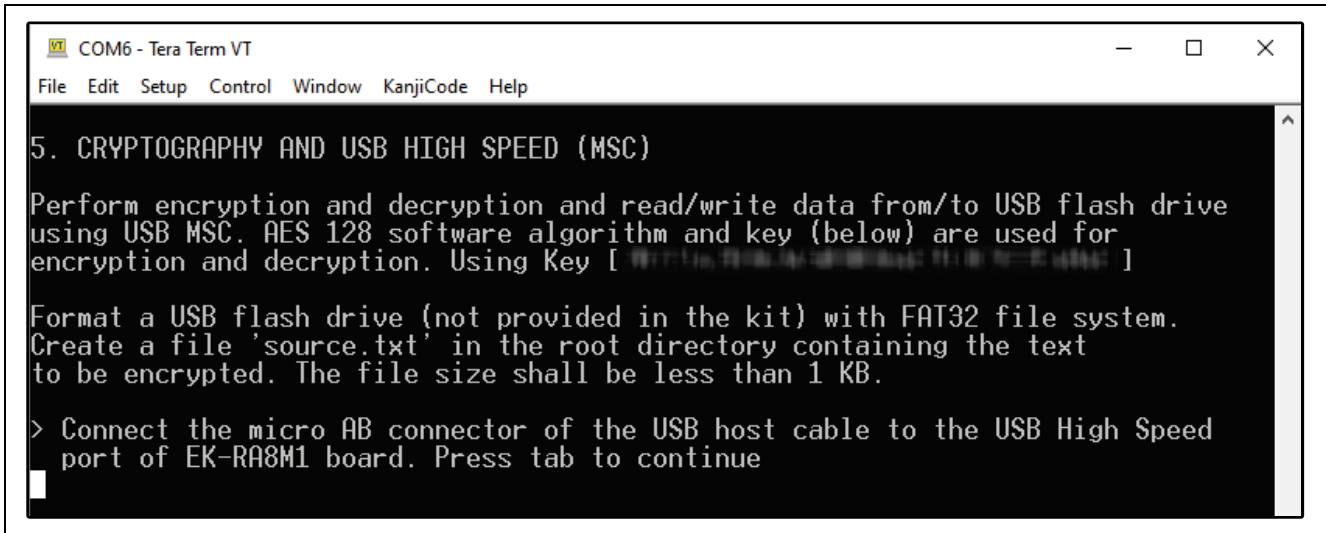
> Press space bar to return to MENU
█

```

Figure 17. Performance Data

23. Press **space** to return to the 'welcome and main menu' screen.

24. Press **5** to display **Cryptography and USB High Speed (MSC)**.
25. Connect the USB flash drive through USB Host Cable to EK-RA8M1 USB High speed port.
26. Set J7 to link pins 1-2 and leave J17 link open.



```
COM6 - Tera Term VT
File Edit Setup Control Window KanjiCode Help

5. CRYPTOGRAPHY AND USB HIGH SPEED (MSC)

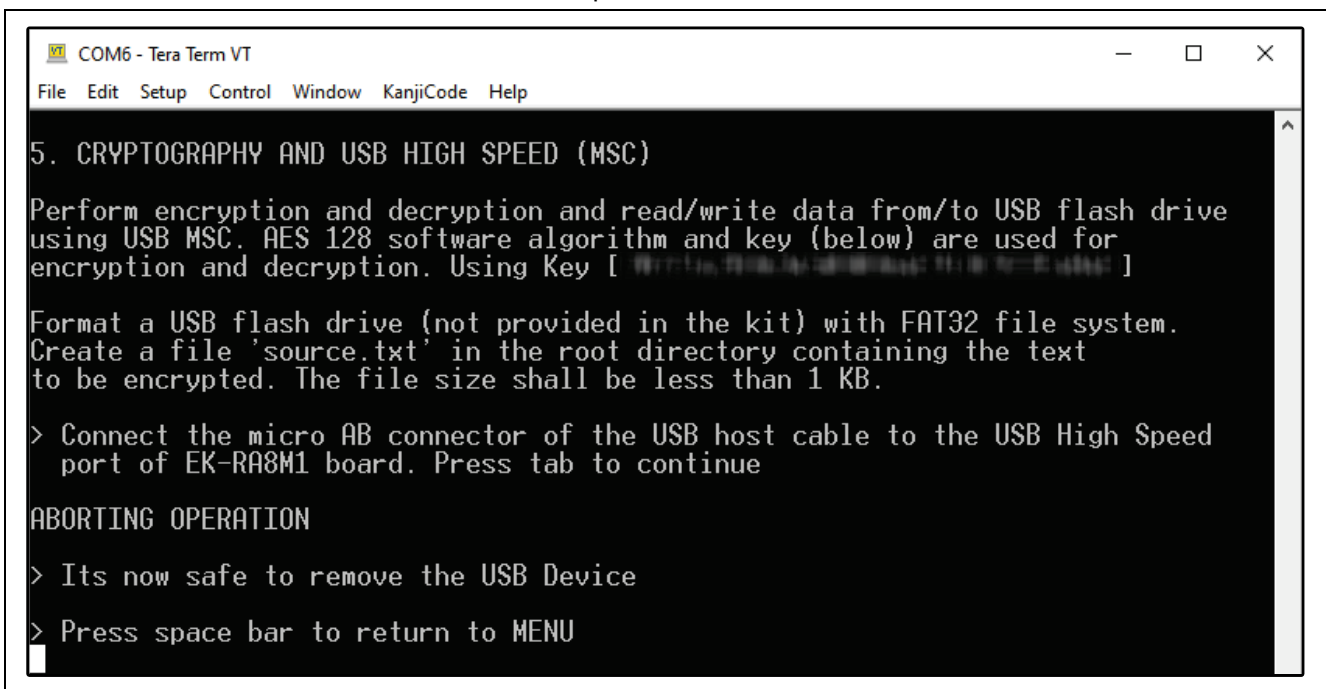
Perform encryption and decryption and read/write data from/to USB flash drive
using USB MSC. AES 128 software algorithm and key (below) are used for
encryption and decryption. Using Key [ 00000000000000000000000000000000 ]

Format a USB flash drive (not provided in the kit) with FAT32 file system.
Create a file 'source.txt' in the root directory containing the text
to be encrypted. The file size shall be less than 1 KB.

> Connect the micro AB connector of the USB host cable to the USB High Speed
port of EK-RA8M1 board. Press tab to continue
```

Figure 18. Cryptography using USB High Speed FAT32

27. Optionally, press **space** to abort the demonstration.
Note: You cannot abort once tab has been pressed.



```
COM6 - Tera Term VT
File Edit Setup Control Window KanjiCode Help

5. CRYPTOGRAPHY AND USB HIGH SPEED (MSC)

Perform encryption and decryption and read/write data from/to USB flash drive
using USB MSC. AES 128 software algorithm and key (below) are used for
encryption and decryption. Using Key [ 00000000000000000000000000000000 ]

Format a USB flash drive (not provided in the kit) with FAT32 file system.
Create a file 'source.txt' in the root directory containing the text
to be encrypted. The file size shall be less than 1 KB.

> Connect the micro AB connector of the USB host cable to the USB High Speed
port of EK-RA8M1 board. Press tab to continue

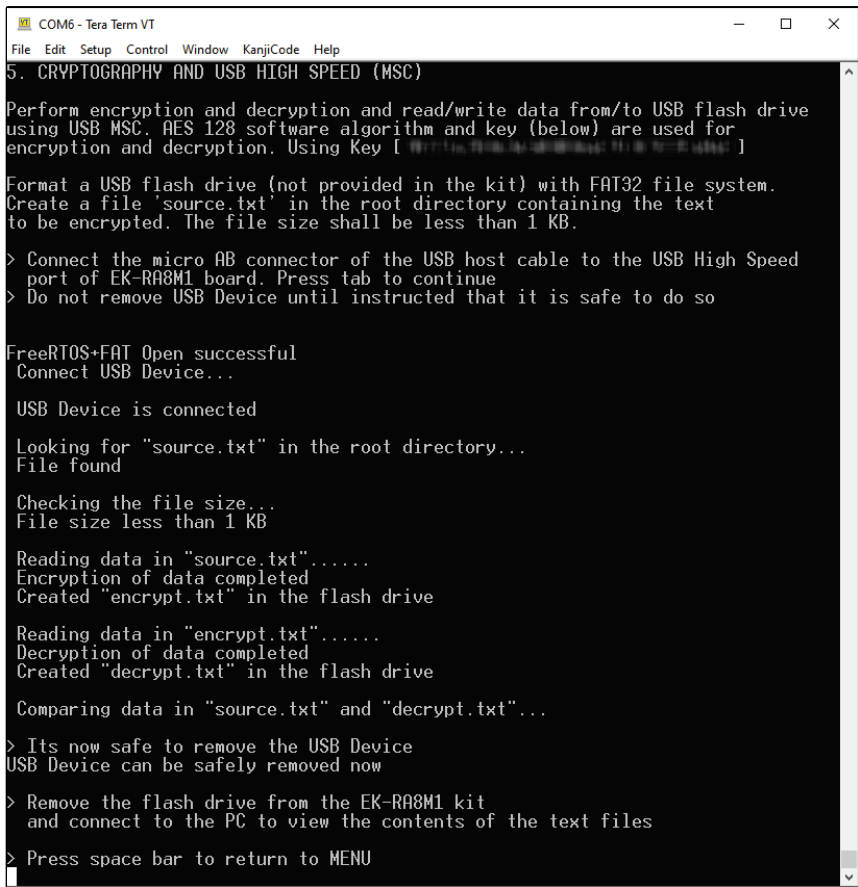
ABORTING OPERATION

> Its now safe to remove the USB Device

> Press space bar to return to MENU
```

Figure 19. Abort Cryptography

28. Connect a FAT32 formatted USB Flash drive and press **tab** key to start.
 USB Flash drive must contain a text file under 1KB in size called `source.txt`.
 File must be at least 1 byte to encrypt.



```

COM6 - Tera Term VT
File Edit Setup Control Window KanjiCode Help
5. CRYPTOGRAPHY AND USB HIGH SPEED (MSC)

Perform encryption and decryption and read/write data from/to USB flash drive
using USB MSC. AES 128 software algorithm and key (below) are used for
encryption and decryption. Using Key [ 0x1234567890ABCDEF ]

Format a USB flash drive (not provided in the kit) with FAT32 file system.
Create a file 'source.txt' in the root directory containing the text
to be encrypted. The file size shall be less than 1 KB.

> Connect the micro AB connector of the USB cable to the USB High Speed
port of EK-RA8M1 board. Press tab to continue
> Do not remove USB Device until instructed that it is safe to do so

FreeRTOS+FAT Open successful
Connect USB Device...

USB Device is connected

Looking for "source.txt" in the root directory...
File found

Checking the file size...
File size less than 1 KB

Reading data in "source.txt".....
Encryption of data completed
Created "encrypt.txt" in the flash drive

Reading data in "encrypt.txt".....
Decryption of data completed
Created "decrypt.txt" in the flash drive

Comparing data in "source.txt" and "decrypt.txt"...

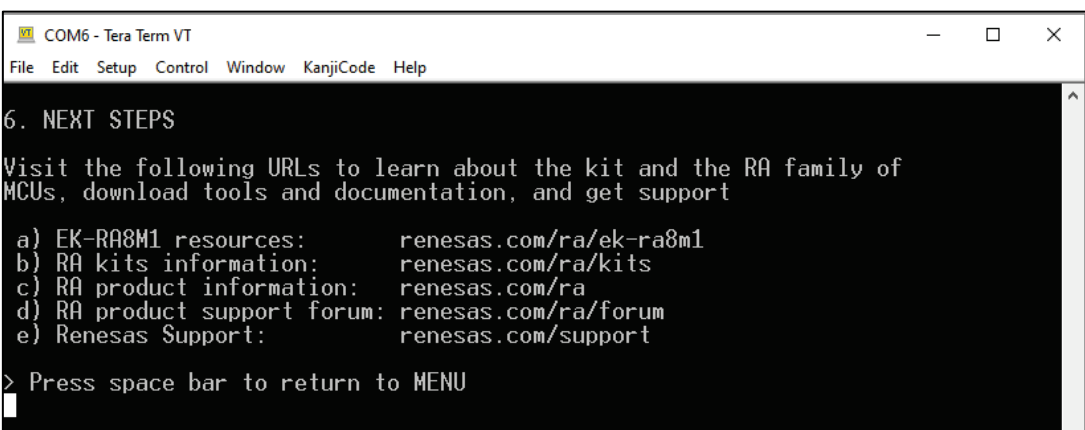
> Its now safe to remove the USB Device
USB Device can be safely removed now

> Remove the flash drive from the EK-RA8M1 kit
and connect to the PC to view the contents of the text files

> Press space bar to return to MENU
  
```

Figure 20. Cryptography Successful

29. Once you have been told it is safe to do so, remove the USB Flash drive and compare the new file
 “decrypt.txt” against the original file `source.txt` and they will match.
30. An additional file `encrypt.txt` shows the encrypted data.
31. Press **space** to return to the ‘welcome and main menu’ screen.
32. Press **6** to display **Next Steps**.



```

COM6 - Tera Term VT
File Edit Setup Control Window KanjiCode Help
6. NEXT STEPS

Visit the following URLs to learn about the kit and the RA family of
MCUs, download tools and documentation, and get support

a) EK-RA8M1 resources:      renesas.com/ra/ek-ra8m1
b) RA kits information:    renesas.com/ra/kits
c) RA product information: renesas.com/ra
d) RA product support forum: renesas.com/ra/forum
e) Renesas Support:       renesas.com/support

> Press space bar to return to MENU
  
```

Figure 21. Next Steps

33. Press **space** to return to the ‘welcome and main menu’ screen.

5. Customizing the Quick Start Example Project

This section lists the requirements and instructions for customizing the Quick Start example project.

Hardware Requirements

- EK-RA8M1 board
- Micro USB device cable
- A PC with at least 1 USB port

Software Requirements

- Windows® 10 operating system
- e² studio IDE 2023-10 (or later)
- SEGGER J-Link® USB drivers
- FSP v5.0.0 (or later)
- Quick Start example project

5.1 Downloading and Installing Software and Development Tools

Before the Quick Start example project can be modified, it is necessary to download and install software and development tools on the host PC.

The FSP, J-Link USB drivers, and e² studio are bundled in a downloadable platform installer available on the FSP webpage at renesas.com/ra/fsp. New users are recommended to use the **Quick Install** option provided in the installation wizard, to minimize the amount of manual configuration needed.

There is no need to download and install software, development tools, and drivers separately.

5.2 Downloading and Importing the Quick Start Example Project

1. Download and extract the Quick Start example project to a local directory on the host PC.
 - The Quick Start example project (source code and project files) is available in the EK-RA8M1 Example Projects Bundle that is available in the **Downloads** tab of EK-RA8M1 webpage at renesas.com/ra/ek-ra8m1
 - Download and extract the example projects bundle (xxxxxxxxxxxxxxxx-ek-ra8m1-exampleprojects.zip) to a local directory on the host PC.
 - Browse to the Quick Start example project at xxxxxxxxxxxxxxxxxxx-ek-ra8m1-exampleprojects\ek_ra8m1_quickstart\quickstart_ek_ra8m1_ep
2. Launch e² studio.
3. Browse to the Workspace where the project file is to be imported. Enter the name in the Workspace dialog box to create a new workspace.

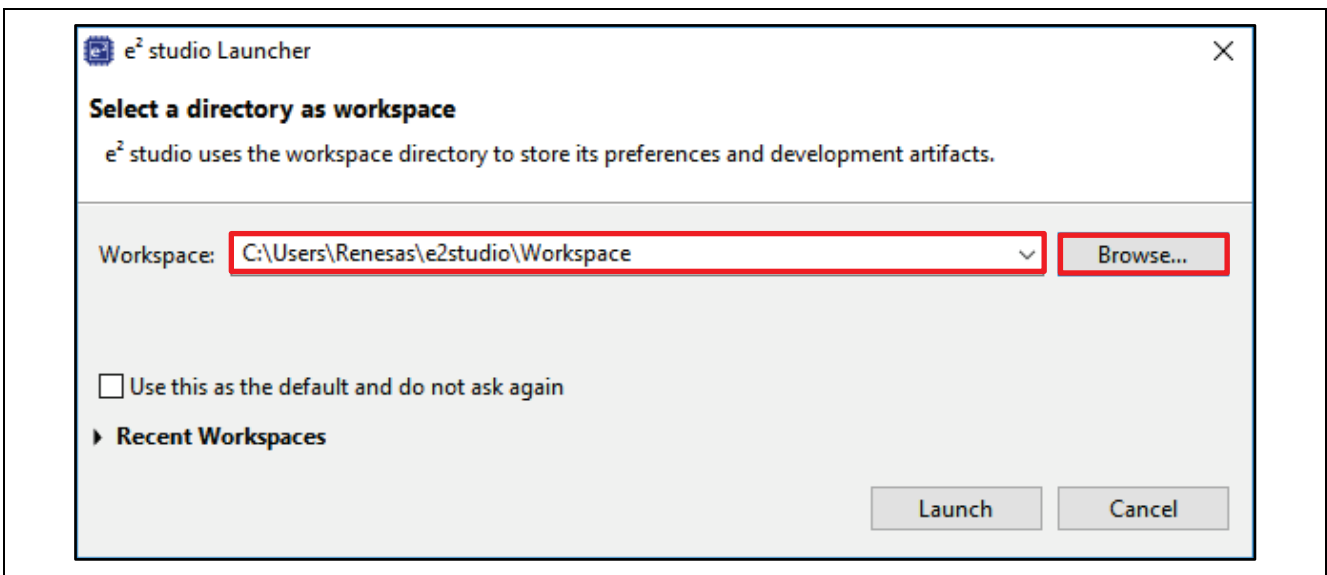


Figure 22. Creating a New Workspace

4. Click **Launch**.

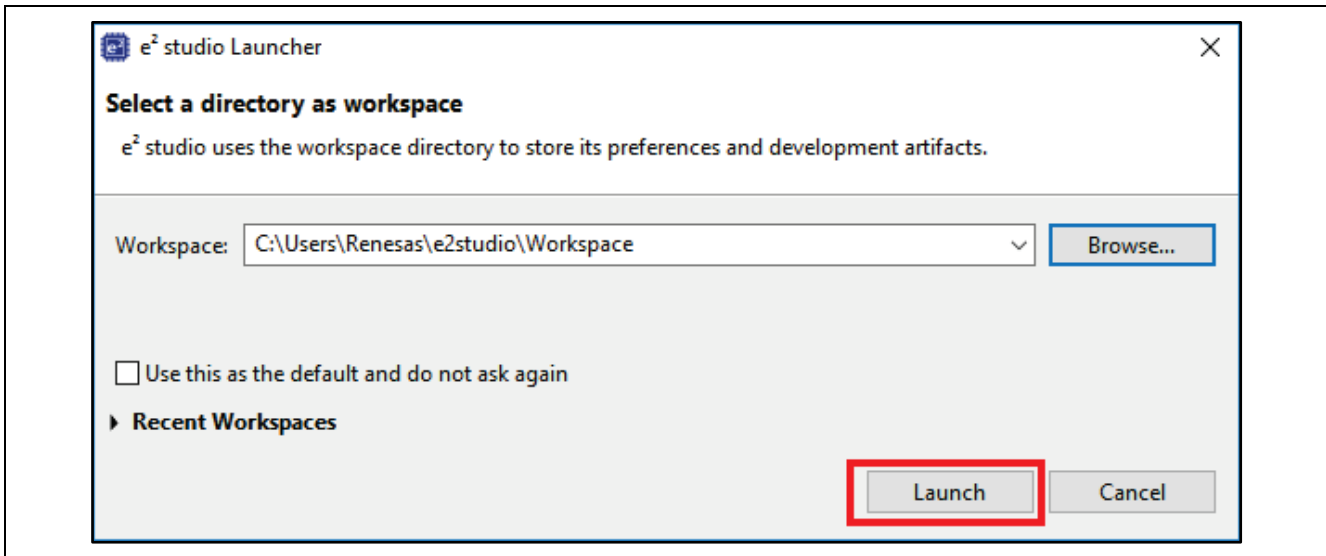


Figure 23. Launching the Workspace

5. Click **Import** from the **File** drop-down menu.

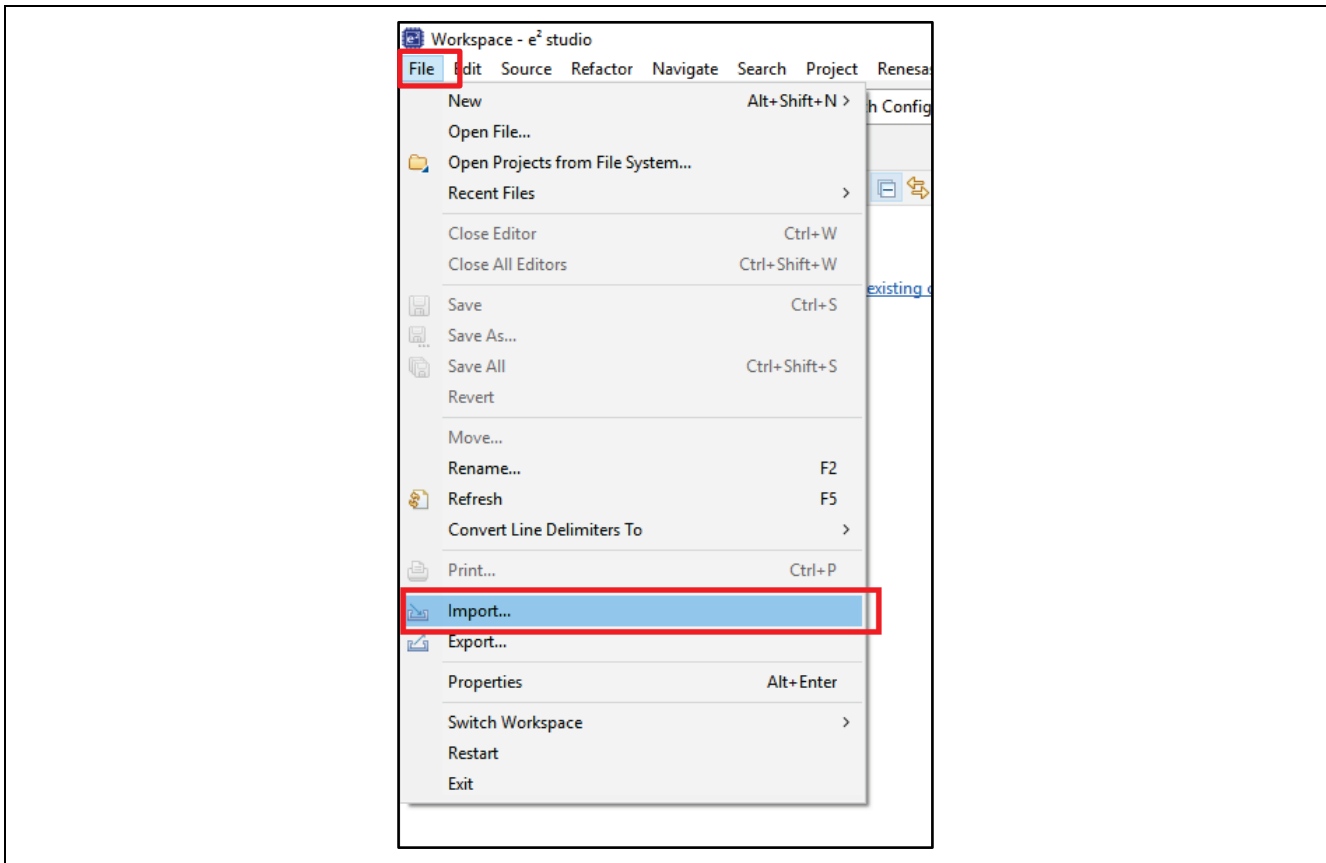


Figure 24. Importing the Project

6. In the **Import** dialog box, select **General**, and then select **Existing Projects into Workspace**.

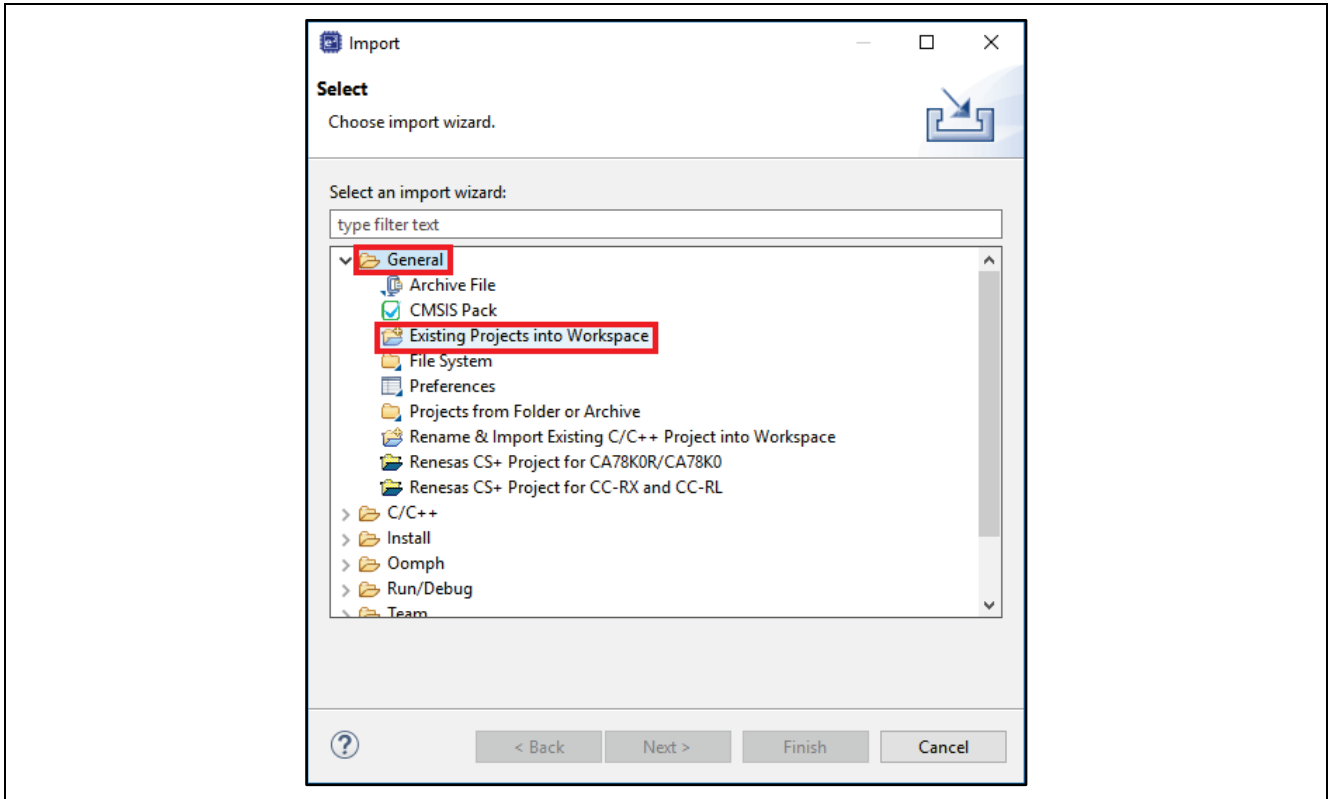


Figure 25. Importing Existing Projects into the Workspace

7. Click **Next**.

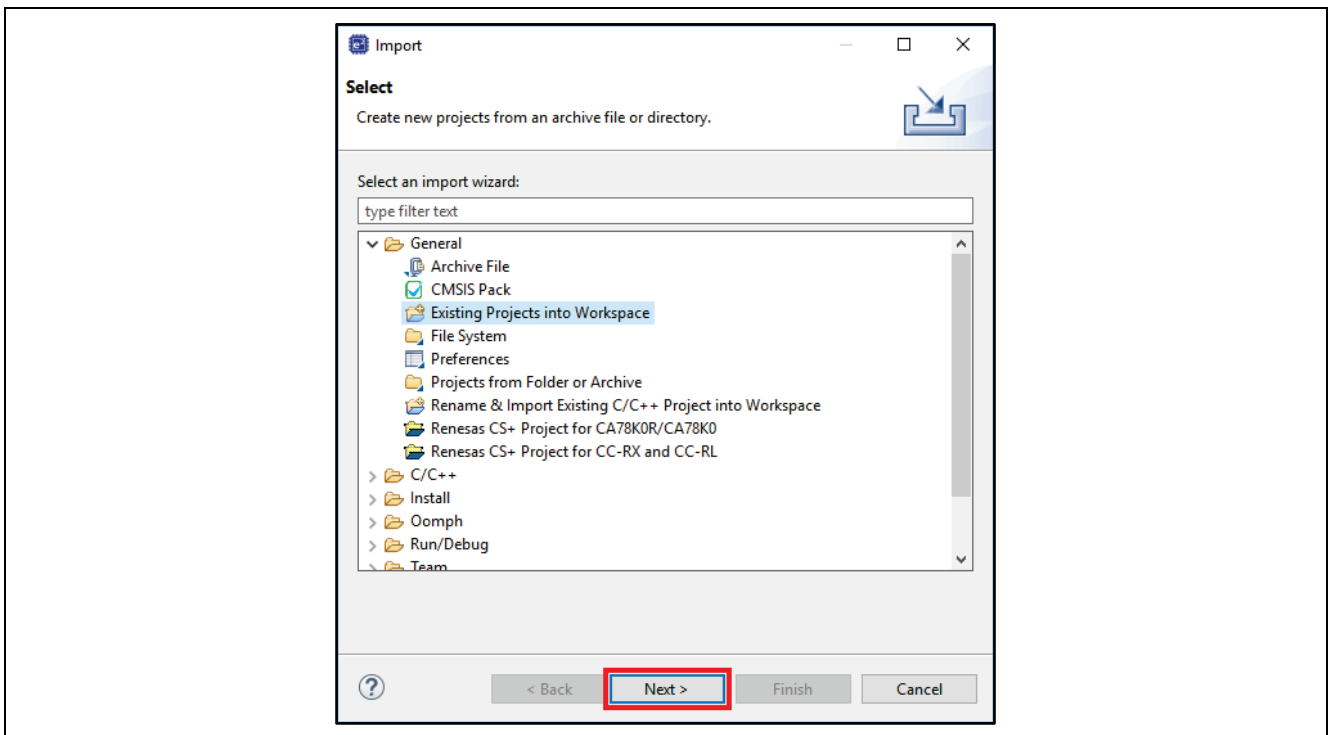


Figure 26. Clicking Next to Import Existing Projects into the Workspace

- Click **Select root directory** and click **Browse** to go to the location of the Quick Start example project folder.

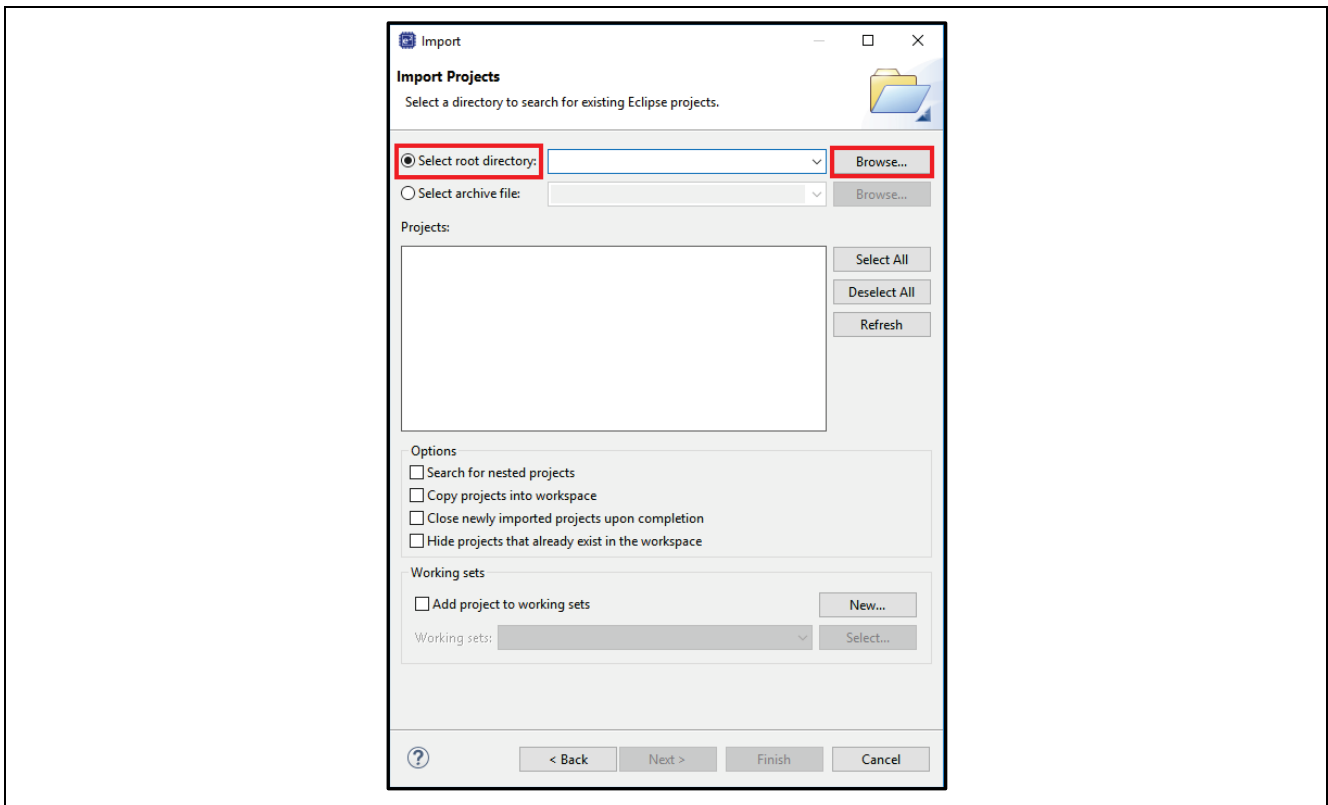


Figure 27. Selecting the Root Directory

- Select the Quick Start example project and click **Finish**.

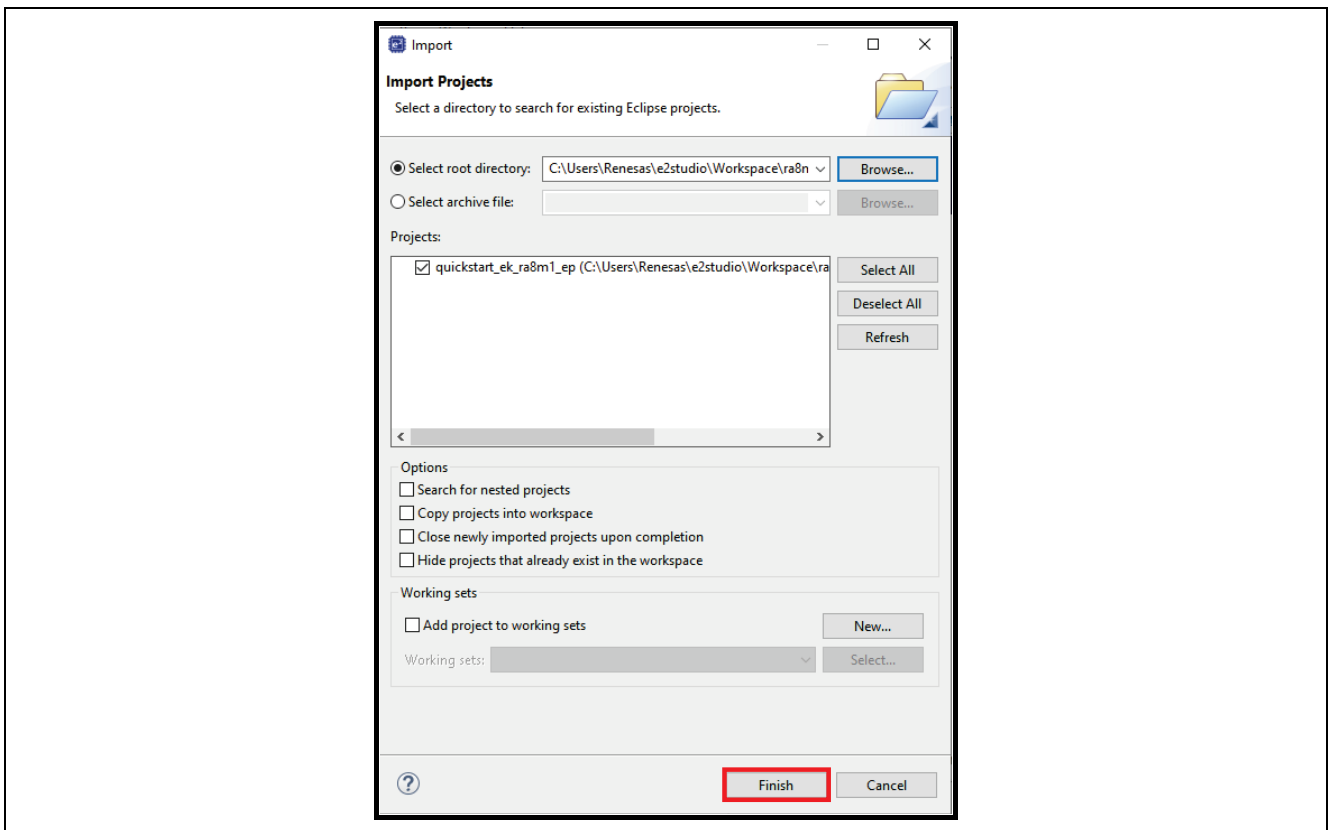


Figure 28. Finishing Importing the Quick Start Example Project

5.3 Modifying, Generating, and Building the Quick Start Example Project

This section provides instructions to modify the Quick Start example project. The Quick Start example project can be modified by editing the source code and reconfiguring the properties of the MCU peripherals, pins, clocks, interrupts, and so forth.

Note: The specific modifications that can be performed to the Quick Start example project are not prescribed in this QSG. User discretion is advised while modifying the Quick Start example project.

1. Once the Quick Start example project is imported, click the **configuration.xml** file to open the configurator. The configurator provides an easy-to-use interface to configure the properties of the MCU peripherals.

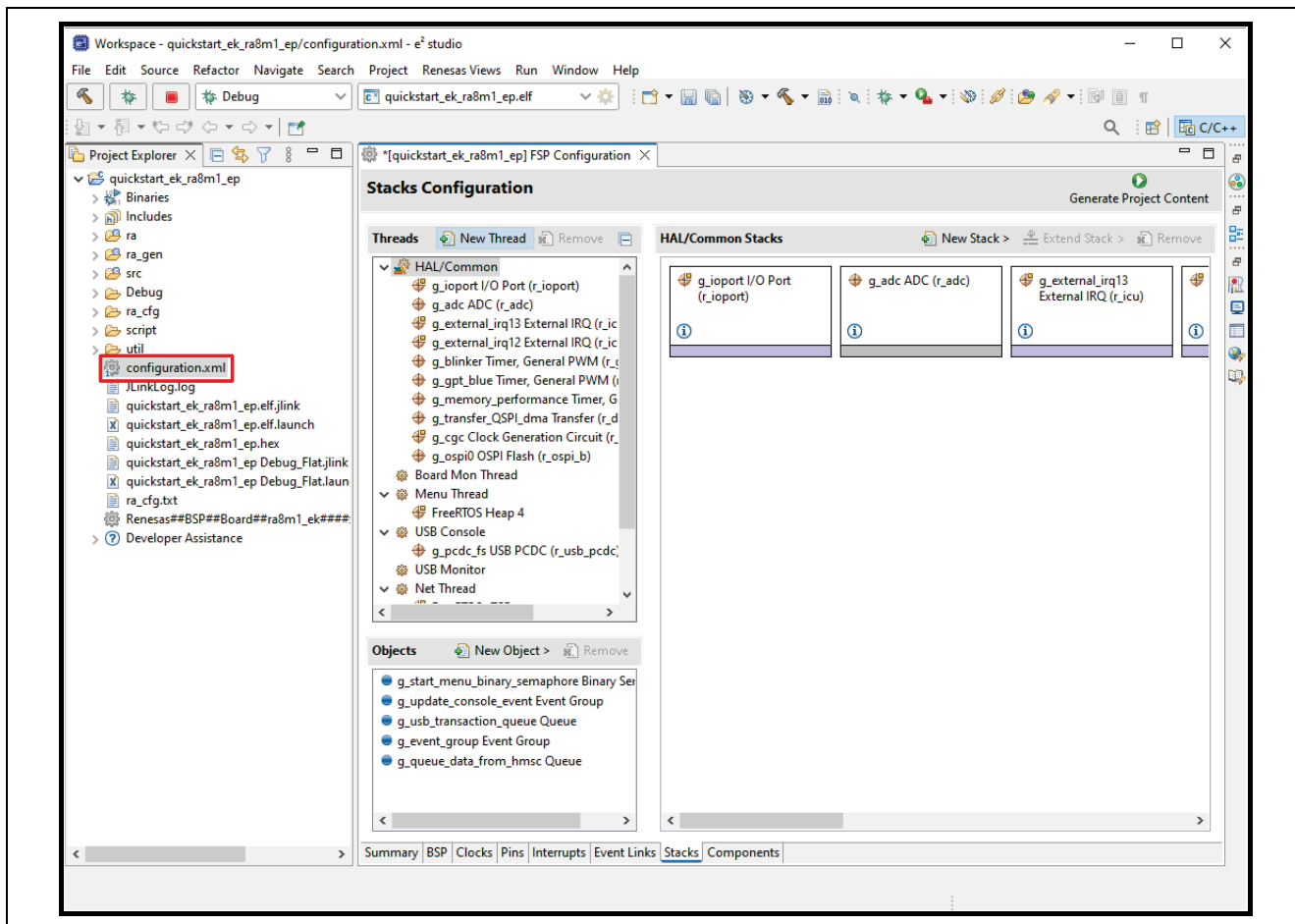


Figure 29. Opening the Configurator

2. For example, in the **Stacks** tab of the configurator, the user can click to select modules to modify the configuration settings, as required, in the **Properties** tab. Figure 31 illustrates modifying the **ADC** driver configuration.

Note: To access the stack component properties, the **view** must be set to **FSP Configuration**. Use the **Open Perspective** button, if necessary.

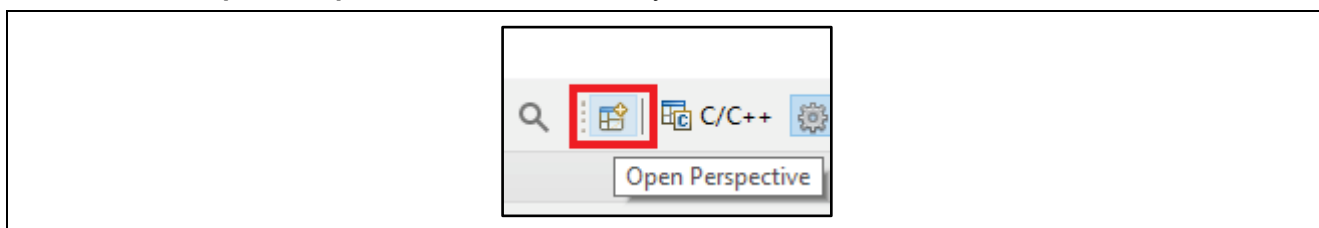


Figure 30. Open Perspective

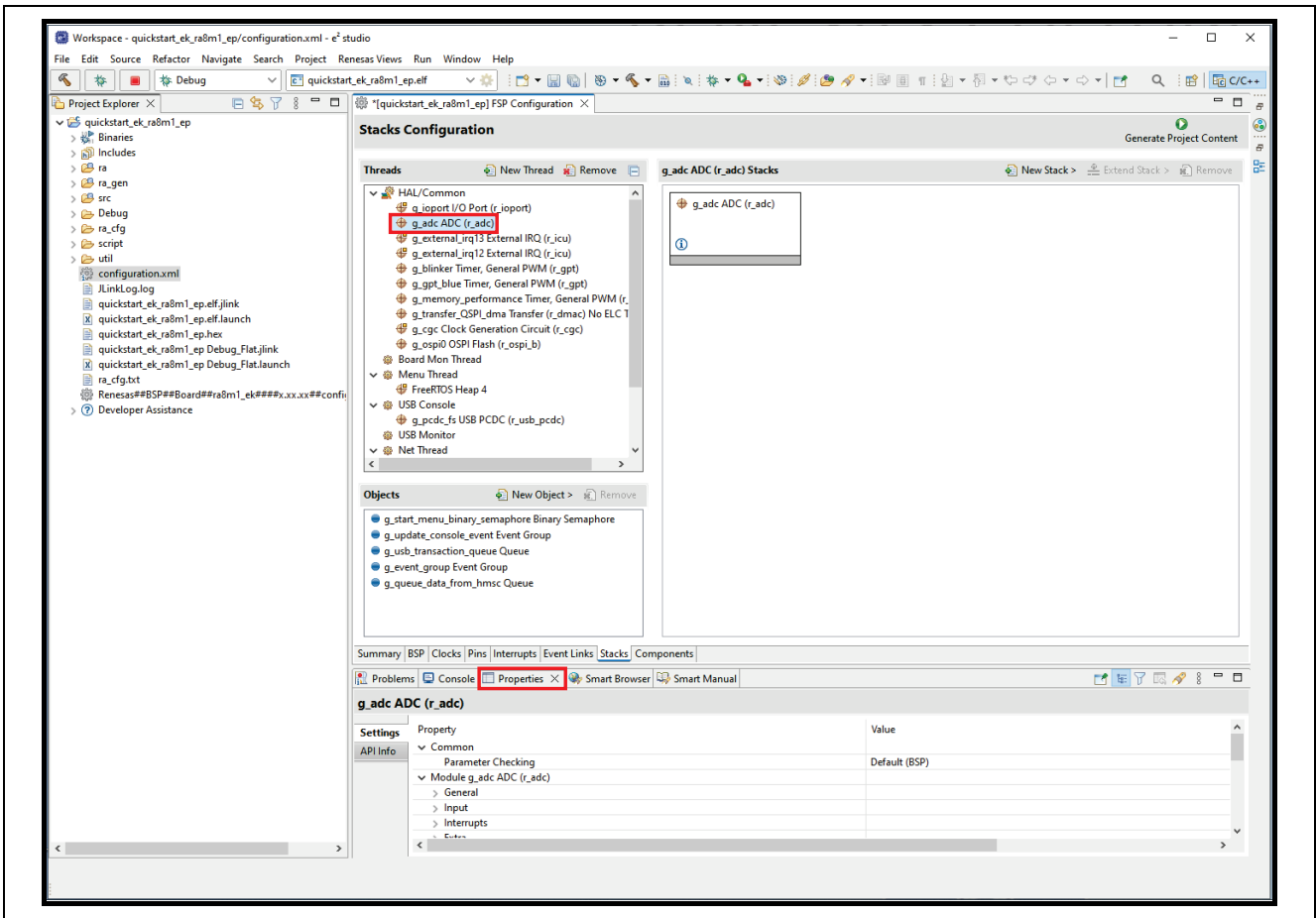


Figure 31. Modifying the Configuration Settings

- After the desired modifications are made, click **Generate Project Content**. A dialog box may appear with an option of saving the configuration changes. Click **Proceed**.

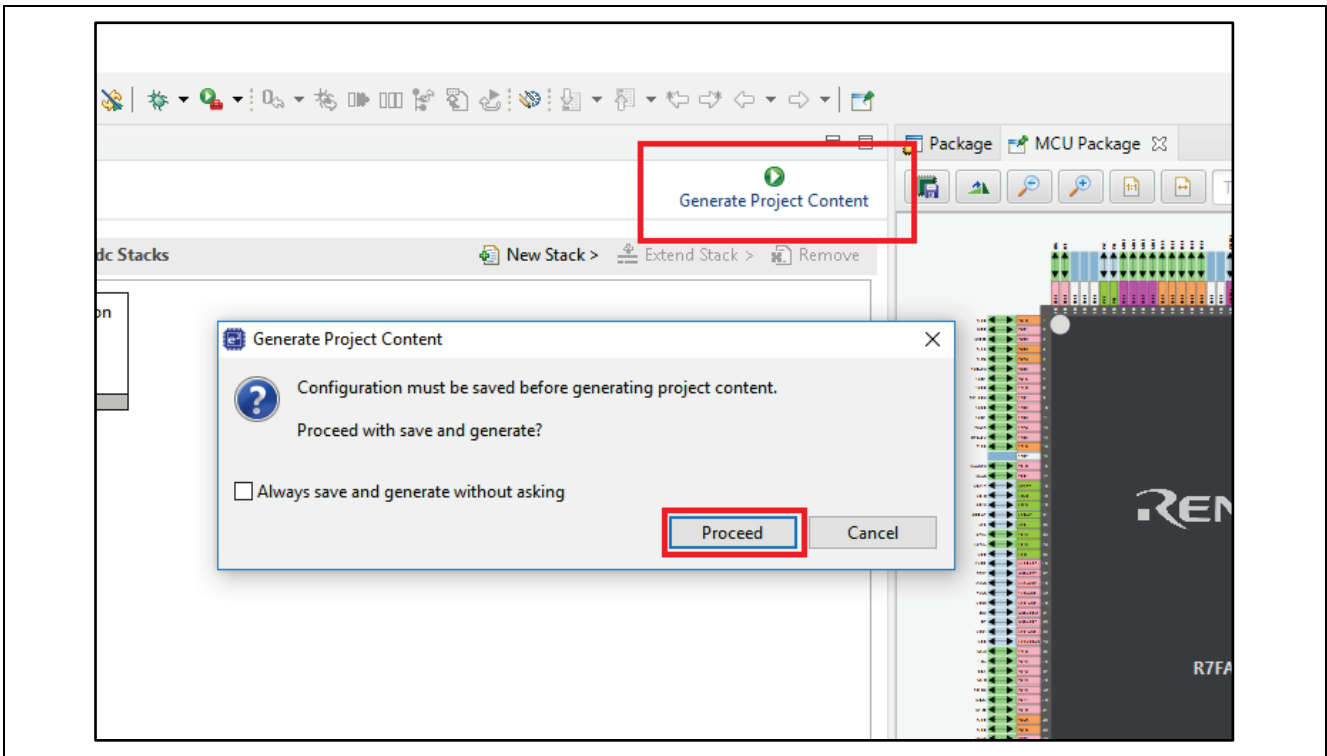


Figure 32. Saving the Configuration Changes

4. Modify the source files in the /src folder as needed and save the changes.
5. Build the project by clicking the build icon.

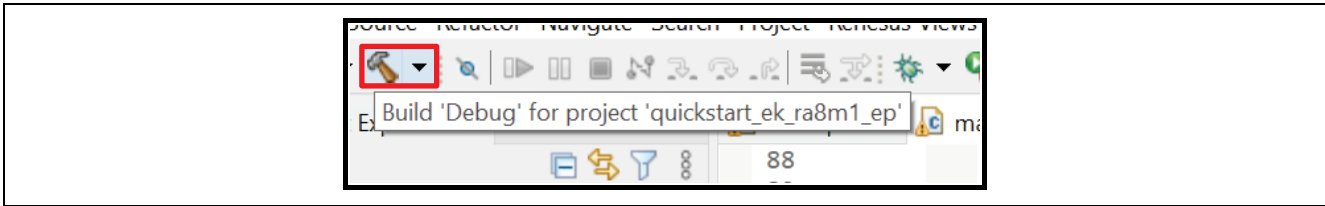


Figure 33. Building the Project

6. A successful build produces an output as follows.
 Note: Warnings are acceptable for a successful build whereas errors are not.

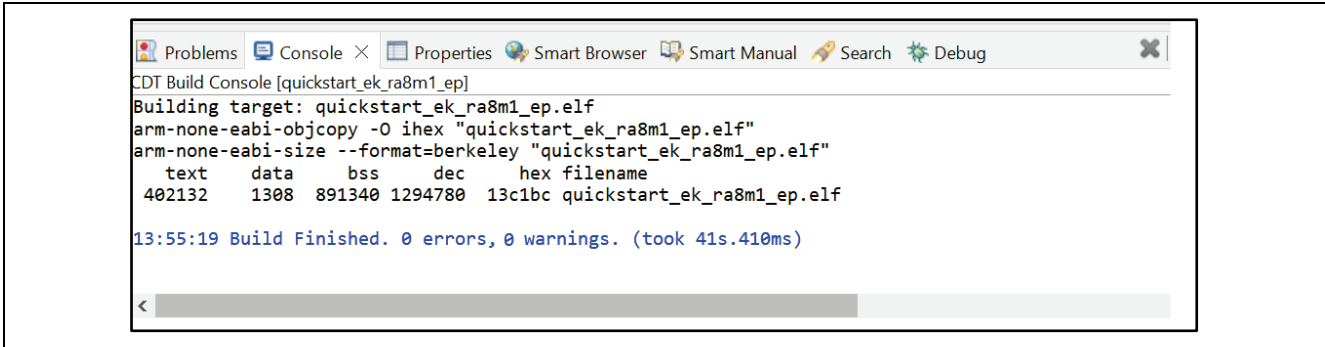


Figure 34. Successful Build Output

5.4 DHCP and Static IP settings

To modify the Ethernet based sample to enable/disable DHCP use the **FreeRTOS+TCP** setting in the stack. The **FSP Configuration** view must be active to access the stack items properties.

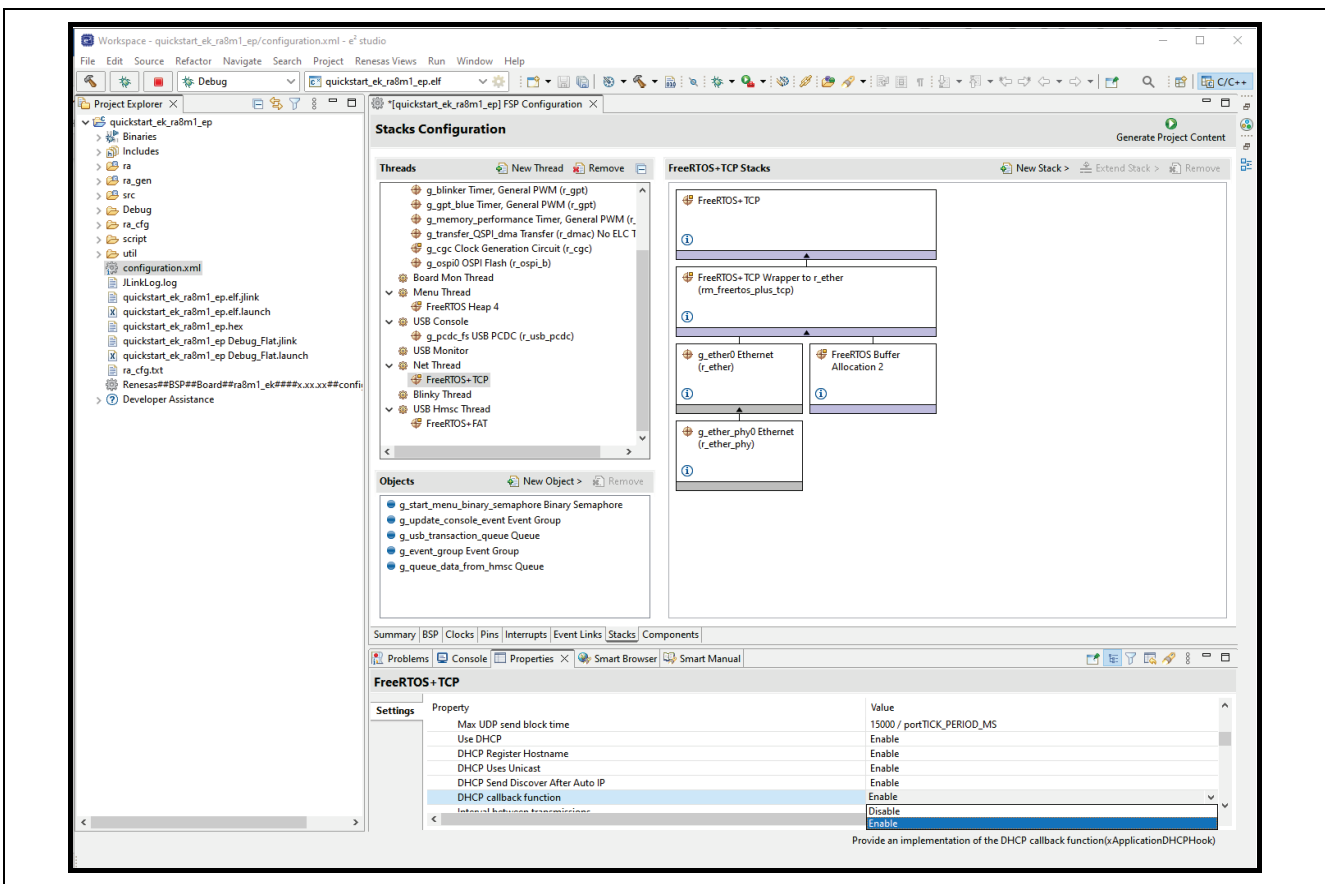


Figure 35. DHCP Setting in FreeRTOS + TCP Stack

If DHCP is disabled, set the static IP address, net-mask and gateway address, to suit your local network.

In File: src\net_thread_entry.c

```

/* Static IP configuration, when DHCP mode is not used for the Example Project.
 * Must be populated by the user according to the Network Settings of your LAN.
 * "HOST-PC" and TARGET must be in the same "SUBNET" to access the web browser.
 * This sample address taken from the LAN where it is tested.
 */
#define STATIC_IP_MAC_ADDRESS      {0x00, 0x11, 0x22, 0x33, 0x44, 0x55}
#define STATIC_IP_ADDRESS         {192, 168,  0, 10}
#define STATIC_IP_NET_MASK        {255, 255, 255,  0}
#define STATIC_IP_GATEWAY_ADDRESS {192, 168,  0,  1}
#define STATIC_IP_DNS_SERVER_ADDRESS {194, 168,  0,  1}

```

5.5 Setting Up Debug Connection between the EK-RA8M1 board and Host PC

To program the modified Quick Start example project on to the EK-RA8M1 board, a debug connection is necessary between the EK-RA8M1 board and host PC.

1. Disconnect the USB cable from micro-AB USB Full Speed port (J11) and connect it to micro-B USB debug port (J10) of the EK-RA8M1 board.

Note: The EK-RA8M1 board supports 3 debugging modes. In this section and the following sections, default debugging mode, Debug On-Board, is used. More information on debugging modes is available in EK-RA8M1 user's manual.

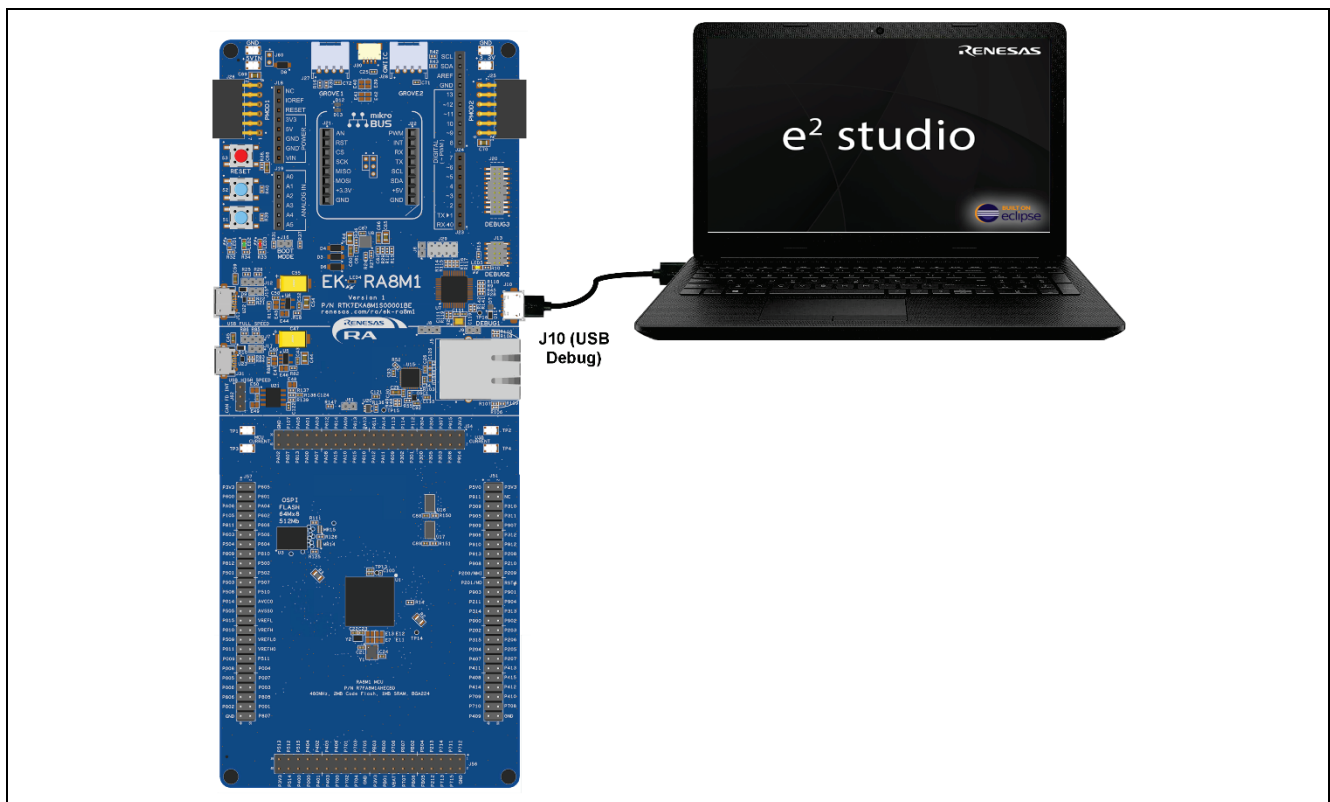


Figure 36. Connecting the EK-RA8M1 Board to the Host PC via USB Debug Port

2. Verify that the debug LED (LED5) stops blinking and lights up orange indicating that the J-Link drivers are detected by the EK-RA8M1 board.

Note: The debug LED (LED5) continues to blink when J-Link drivers are not detected by the EK-RA8M1 board. In that case, make sure that the EK-RA8M1 board is connected to the host PC through the micro-B USB debug port (J10) and that J-Link drivers are installed on the host PC by checking in the Windows Device Manager (expand **Universal Serial Bus controller**, and locate **J-Link driver**).

5.6 Downloading and Running the Modified Quick Start Example Project

1. In e² studio, click the drop-down menu for the debug icon, select **Debug Configurations** option.

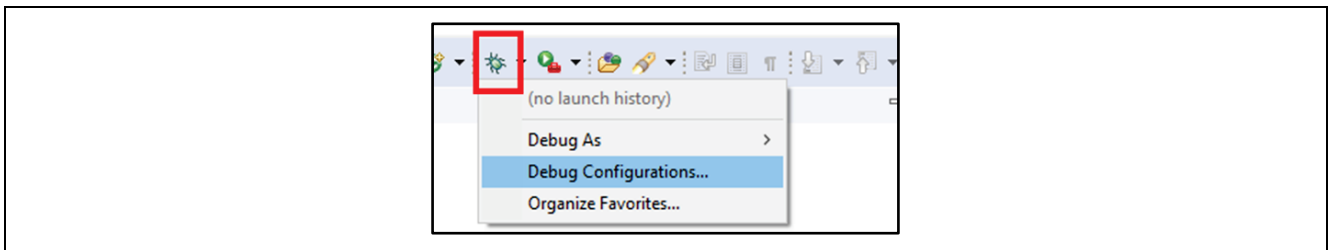


Figure 37. Selecting the Debug Option

2. In the dialog on the left-hand pane, expand the **Renesas GDB Hardware Debugging** and select the built image to debug. In this case, the **quickstart_ek_ra8m1_ep Debug_Flat**.

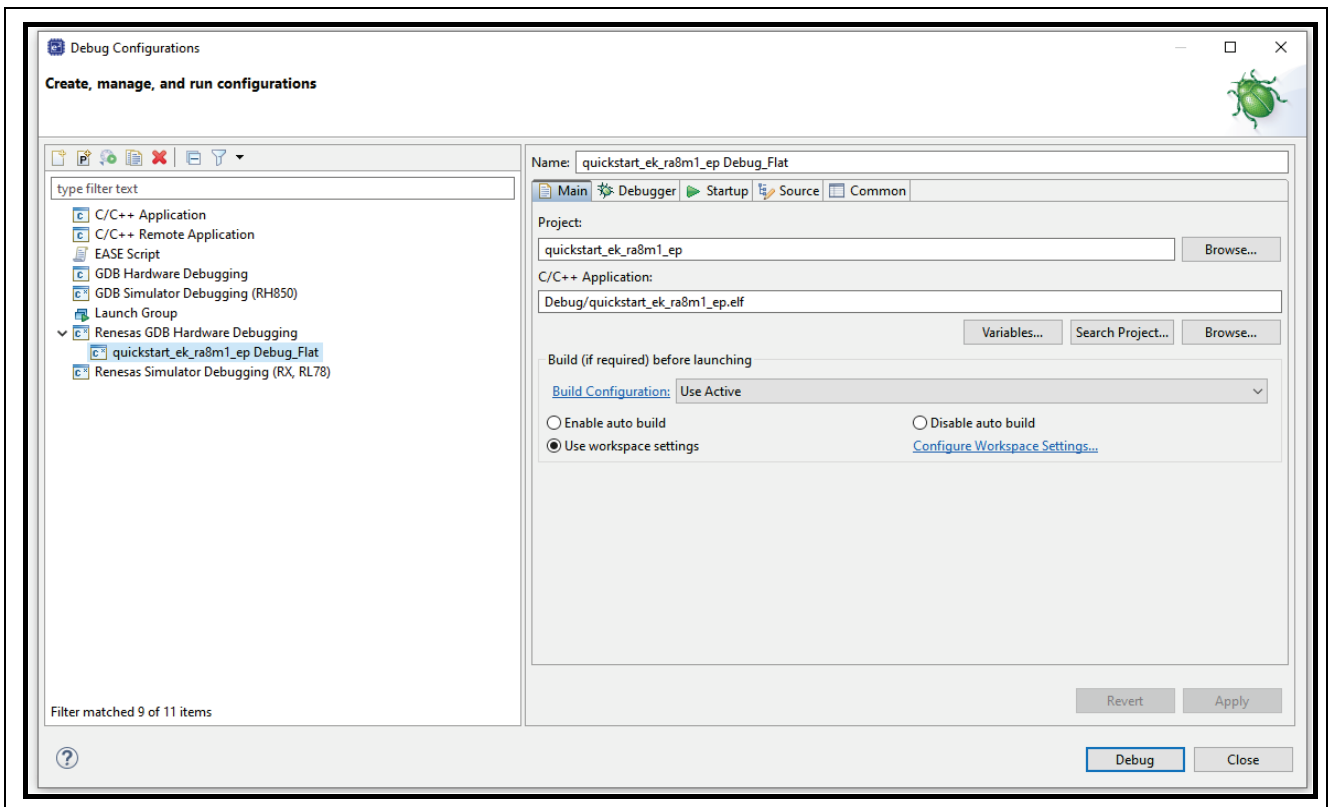


Figure 38. Selecting the Debug Image

3. Click **Debug**.

5.7 Firewall Dialog

1. A firewall warning may be displayed for '**e2- server-gdb.exe**'. Check the '**Private networks, such as my home or work network**' box and click '**Allow access**'.
2. A user account control dialog may be displayed. Enter the administrator password and click **Yes**.
3. A dialog box may appear. Click **Switch**.

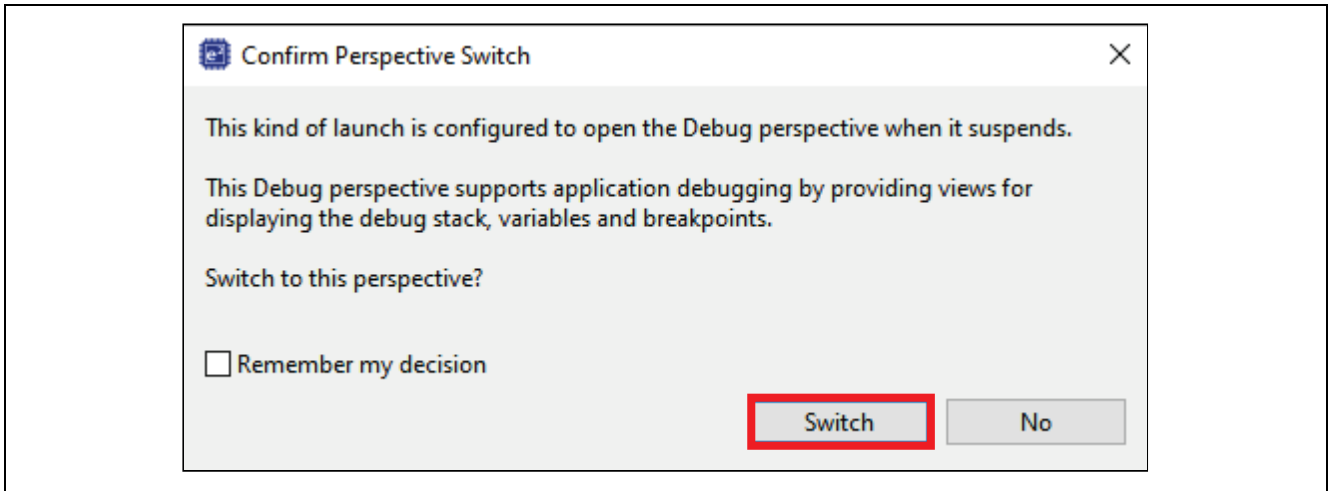


Figure 39. Opening the Debug Perspective

4. Press **F8** or click **Resume** icon to begin executing the project.

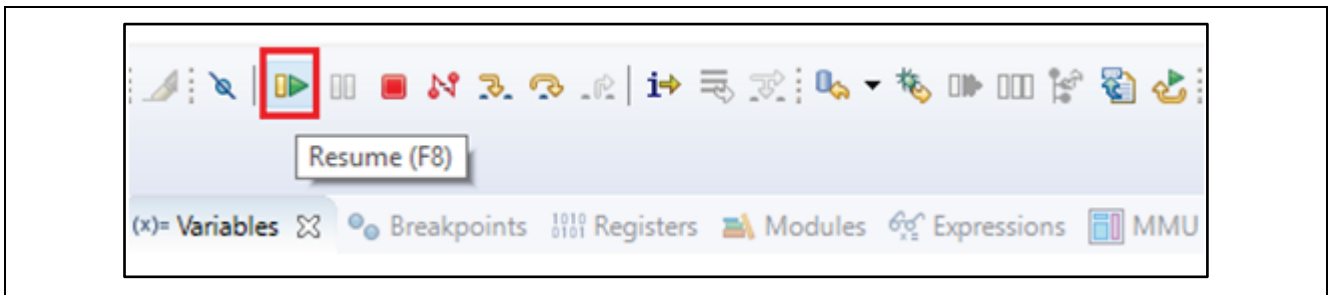


Figure 40. Executing the Project

5. The modified Quick Start example project is programmed into the EK-RA8M1 board and is running. The project can be paused, stopped, or resumed using the debug controls.

6. Next Steps

1. To learn more about the EK-RA8M1 kit, refer to the EK-RA8M1 user's manual and design package available in the Documents and Download tabs respectively of the EK-RA8M1 webpage at renesas.com/ra/ek-ra8m1
2. Renesas provides several example projects that demonstrate different capabilities of the RA MCUs. These example projects can serve as a good starting point for users to develop custom applications. Example projects (source code and project files) for EK-RA8M1 kit are available in the EK-RA8M1 Example Projects Bundle. The example projects bundle is available in the Downloads tab of EK-RA8M1 webpage.
 - Download and extract the example projects bundle (xxxxxxxxxxxxxxxx-ek-ra8m1-exampleprojects.zip) to a local directory on the host PC.
 - Refer to the list of all example projects (xxxxxxxxxxxxxxxx-ek-ra8m1-exampleprojects.pdf) available inside the example projects bundle.
 - Browse to the desired example project (for example: adc_ek_ra8m1_ep) in the example projects bundle (xxxxxxxxxxxxxxxx-ek-ra8m1-exampleprojects\ek_ra8m1\adc\adc_ek_ra8m1_ep)
 - For help on using example projects, refer to Example Project Usage Guide.pdf in the RA Example Repository on GitHub at: github.com/renesas/ra-fsp-examples/tree/master/example_projects
 - The archived versions of the source code of the example projects are available in the example project repository.

7. Website and Support

Visit the following URLs to learn about the kit and the RA family of microcontrollers, download tools and documentation, and get support.

EK-RA8M1 Resources	renesas.com/ra/ek-ra8m1
RA Kits Information	renesas.com/ra/kits
RA Product Information	renesas.com/ra
RA Product Support Forum	renesas.com/ra/forum
RA Videos	renesas.com/ra/videos
RA Kit Feedback and Feature Request	renesas.com/ra/kitfeedback
Renesas Support	renesas.com/support

Revision History

Rev.	Date	Description	
		Page	Summary
1.00	Oct.03.23	—	Initial release
1.01	Dec.05.23	20	Updated section 5

EK-RA8M1 – Quick Start Guide

Publication Date: Dec.05.23

Published by: Renesas Electronics Corporation

EK-RA8M1 – Quick Start Guide