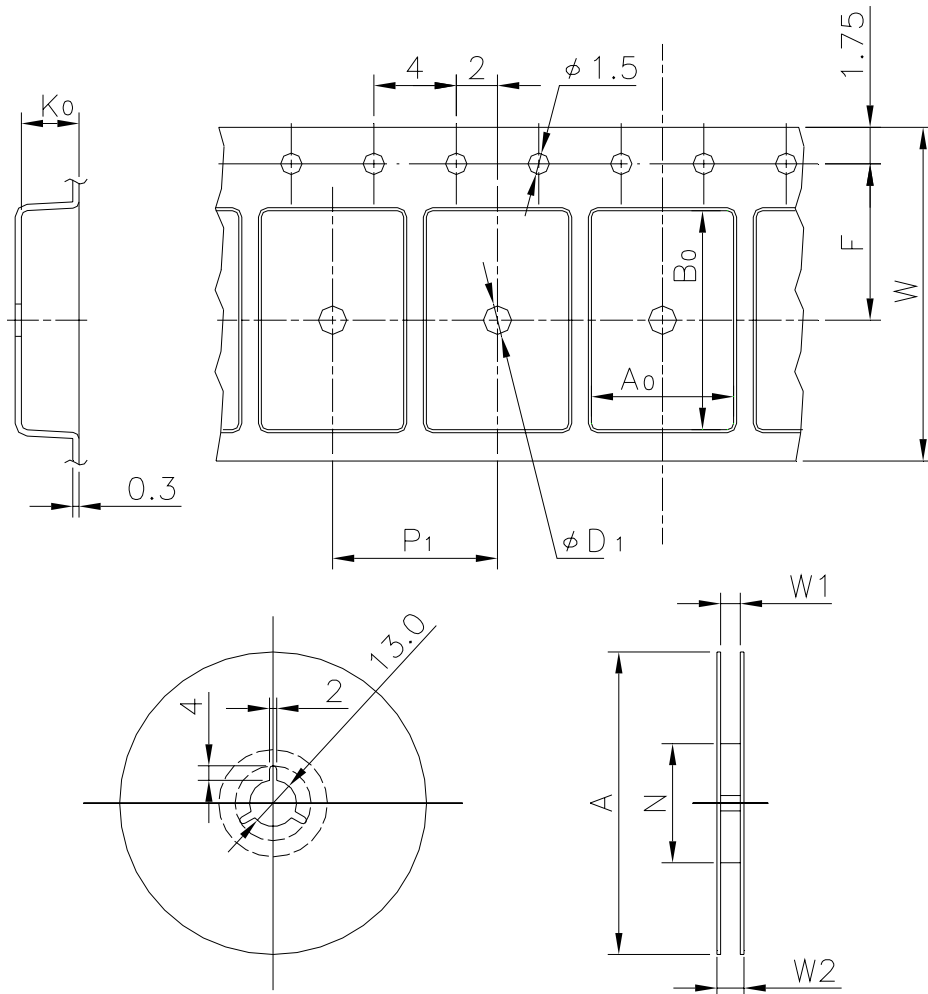


# EMBOSSED TAPE

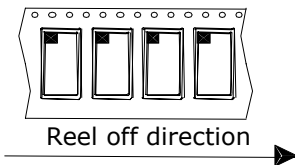
Taping Code	RENESAS Code	Previous Code
MTE2416H-56P6S-A	PRQP0044GA-A	44P6N-A
	PRQP0056JA-A	56P6S-A



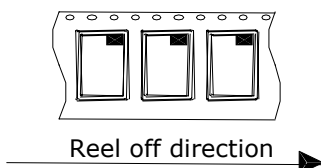
Unit:mm

## Standard Orientation of Package

The pin 1 is located in the hatching portion.



The pin 1 may also be located in the following portion for reverse bent packages and some QFPs.



Tape Dimensions (mm)	W	24
	$P_1$	16
	$A_0$	13.7
	$B_0$	13.7
	$K_0$	3.4
	F	11.5
	$D_1$	2.05
Reel Dimensions (mm)	A	330
	N	100
	W1	25.4
	W2	29.4
Maximum storage No. IC/Reel		1000
Material		Carbon PS
Surface resistance		Less than $1 \times 10^{11} \Omega / \square$
Packing form		Dry pack