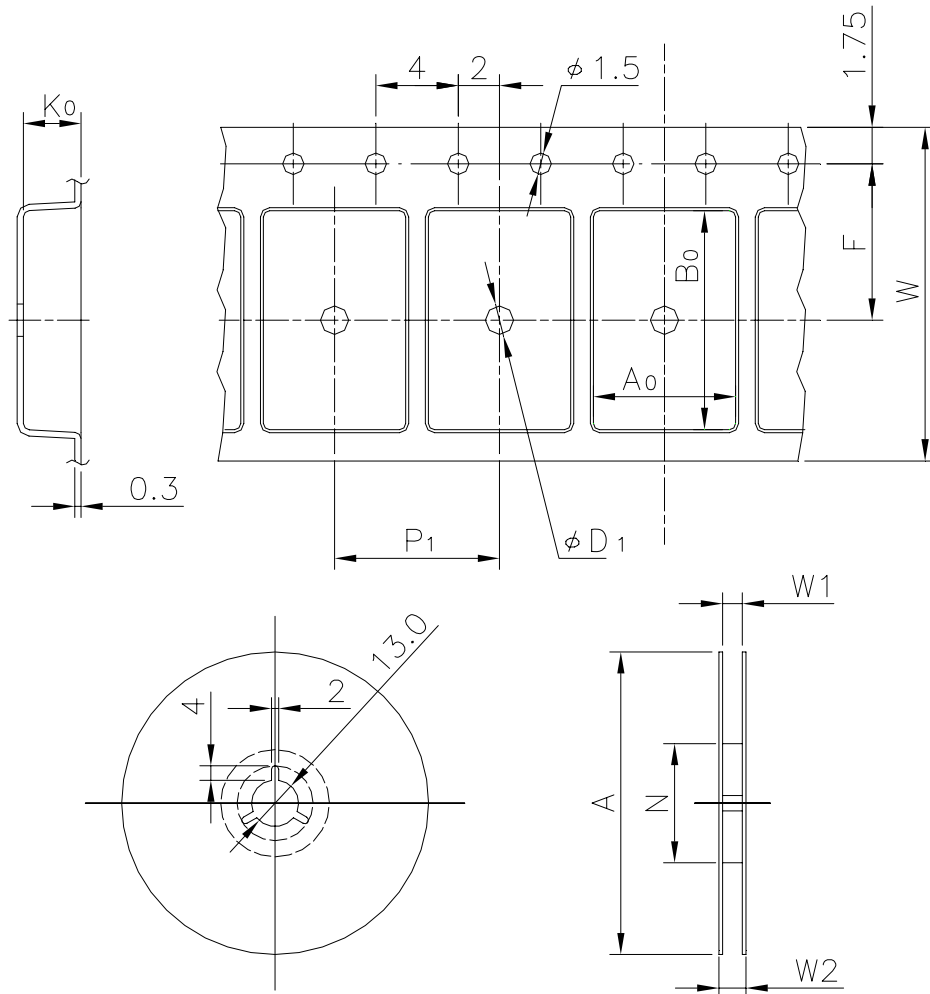


EMBOSSED TAPE

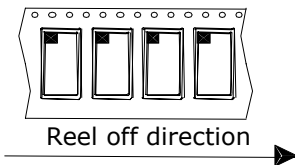
Taping Code	RENESAS Code	Previous Code
MTE2412H-20P2N	PRSP0020DA-A	20P2N-A



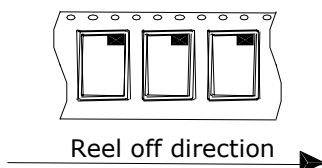
Unit:mm

Standard Orientation of Package

The pin 1 is located in the hatching portion.



The pin 1 may also be located in the following portion for reverse bent packages and some QFPs.



Tape Dimensions (mm)	W	24
	P_1	12
	A_0	8.2
	B_0	13.2
	K_0	2.1
	F	11.5
	D_1	2.05
Reel Dimensions (mm)	A	330
	N	100
	W1	25.4
	W2	29.4
Maximum storage No. IC/Reel		2000
Material		Carbon PS
Surface resistance		Less than $1 \times 10^{11} \Omega / \square$
Packing form		Dry pack