

ISL71710SLHM

Radiation Hardened Active-Input High Speed Digital Isolator

The **ISL71710SLHM** is an active input digital signal isolator with CMOS output, using Giant Magnetoresistive (GMR) technology for small size, high speed, and low power. The ISL71710SLHM is the fastest isolator of its type, with a 150Mbps typical data rate. The symmetric magnetic coupling barrier provides a typical propagation delay of only 10ns and a pulse-width distortion as low as 0.3ns, achieving the best specifications of any isolator.

The ISL71710SLHM has unsurpassed common-mode transient immunity of 50kV/μs. It is ideal for isolating applications such as PROFIBUS, RS-485, and RS-422.

The ISL71710SLHM is offered in an 8 Ld 5mmx4mm SOIC package and is fully specified across the military ambient temperature range of -55°C to +125°C.

Applications

- RS-485 and RS-422
- CAN bus/device net
- Multiplexed data transmission
- Data interfaces
- Ground loop elimination
- Peripheral interfaces
- Serial communication
- Logic level shifting
- Isolated power

Features

- Electrically screened to VID [V62/23615](#)
- Barrier Voltage Endurance
 - 2.5kV_{RMS} for 1 minute, 600V_{RMS} continuous (VDE V 0884-10 certified: file 5022321-4880-0001)
 - 1.5kV_{DC} continuous
 - 500V_{DC} at 60MeV•cm²/mg SEDR
- Production testing and qualification follow the AS6294/1 standard (see [Radiation Hardened Plastic Production and QCI Flow](#))
- UL 1577 recognized: file reference E483309
- 5V/3.3V CMOS/TTL compatible
- High speed: 150Mbps typical
- 10ns typical propagation delay
- 300ps typical pulse-width distortion
- 4ns typical propagation delay skew
- 50kV/μs typical common-mode transient immunity
- Low EMI/RFI emissions
- Excellent magnetic immunity
- Passes NASA low outgassing specifications
- NiPdAu-Ag leadframes (Pb-free, Sn-free)
- Full military temperature range operation
 - T_A = -55°C to +125°C
- TID Rad Hard Assurance (RHA) testing
 - Low Dose Rate (LDR) (0.01rad(Si)/s): 75krad(Si)
- SEE characterization
 - No DSEE with V_{DD} = 6.5V at LET 86MeV•cm²/mg

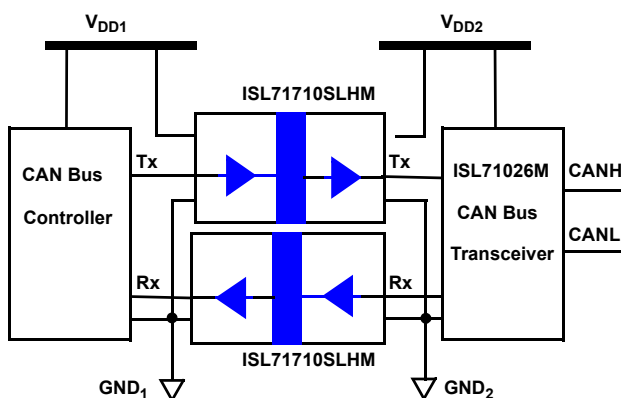


Figure 1. Typical CAN Bus Application

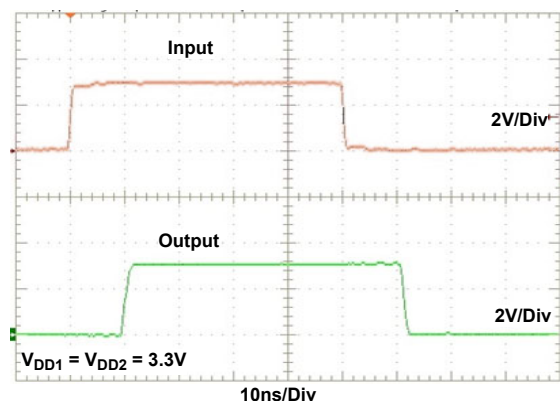


Figure 2. 10MHz Input and Output Waveforms

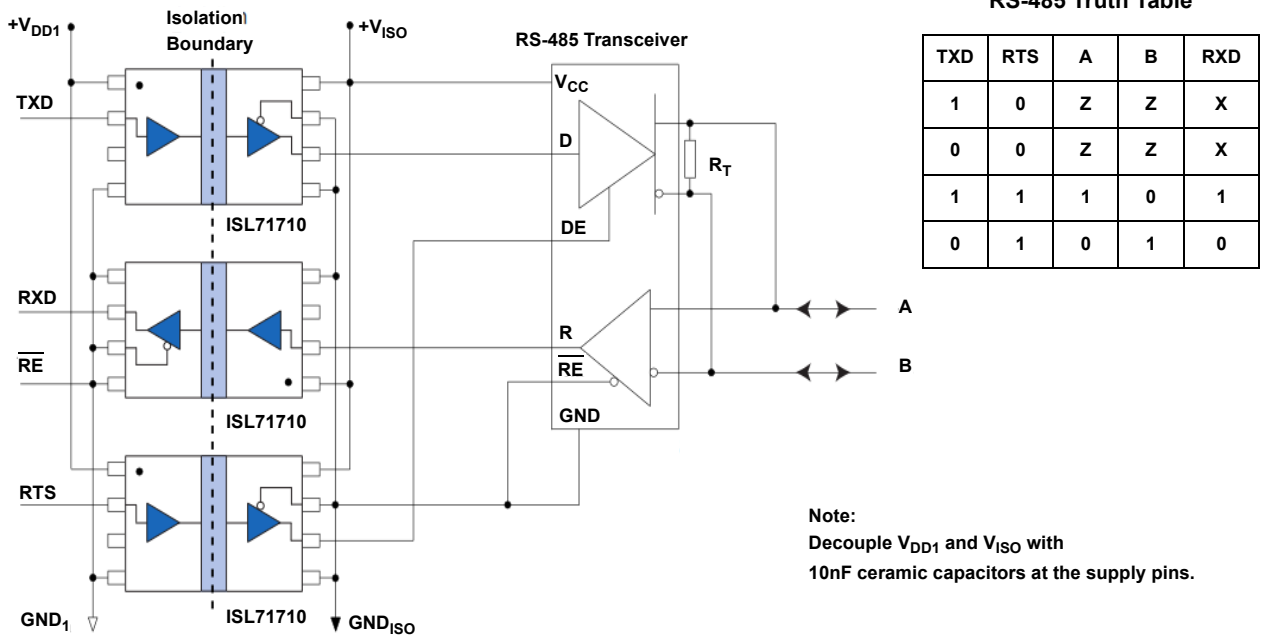


Figure 3. RS-485 Multi-Chip Isolated Transceiver Application Schematic

Contents

| | |
|--|-----------|
| 1. Overview | 4 |
| 1.1 Functional Block Diagram | 4 |
| 2. Pin Information | 4 |
| 2.1 Pin Assignments | 4 |
| 2.2 Pin Descriptions | 4 |
| 3. Specifications | 5 |
| 3.1 Absolute Maximum Ratings | 5 |
| 3.2 Outgas Testing | 5 |
| 3.3 Thermal Information | 5 |
| 3.4 Recommended Operating Conditions | 6 |
| 3.5 Insulation Specifications | 6 |
| 3.6 Safety and Approvals | 6 |
| 3.7 Electrical Specifications | 7 |
| 3.8 Timing Diagram | 9 |
| 4. Typical Performance Curves | 10 |
| 5. Device Information | 13 |
| 5.1 Electrostatic Discharge Sensitivity | 13 |
| 5.2 Electromagnetic Compatibility | 13 |
| 5.3 Dynamic Power Consumption | 13 |
| 5.4 Power Supply Decoupling | 14 |
| 5.5 Signal Status on Start-Up and Shutdown | 14 |
| 5.6 Data Transmission Rates | 14 |
| 6. Package Outline Drawing | 15 |
| 7. Ordering Information | 16 |
| 8. Revision History | 16 |

1. Overview

1.1 Functional Block Diagram

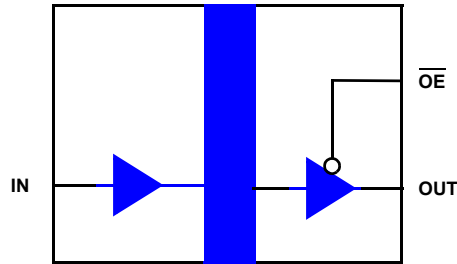
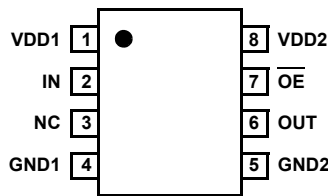


Figure 4. ISL71710SLHM Block Diagram

2. Pin Information

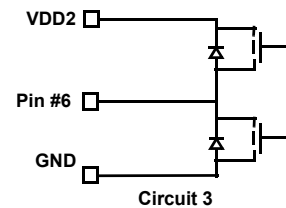
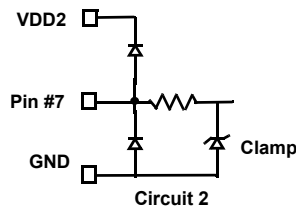
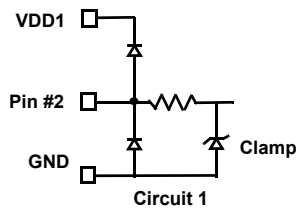
2.1 Pin Assignments



Top View

2.2 Pin Descriptions

| Pin Number | Pin Name | ESD Circuit | Description |
|------------|-----------------|-------------|--|
| 1 | VDD1 | N/A | Supply voltage |
| 2 | IN | 1 | Data in |
| 3 | NC | N/A | No internal connection. Leave this pin floating or connect it to VDD1 or GND1. |
| 4 | GND1 | N/A | Ground return for VDD1 |
| 5 | GND2 | N/A | Ground return for VDD2 |
| 6 | OUT | 3 | Data output |
| 7 | \overline{OE} | 2 | Output enable, active low. Internally pulled low with 100kΩ to enable the output when this pin is not connected. |
| 8 | VDD2 | N/A | Supply voltage |



3. Specifications

3.1 Absolute Maximum Ratings

CAUTION: Do not operate at or near the maximum ratings listed for extended periods of time. Exposure to such conditions can adversely impact product reliability and result in failures not covered by warranty.

| Parameter | Minimum | Maximum | Unit |
|--|---------|-----------------|------|
| Maximum Supply Voltage, VDD1 to GND1 | -0.5 | +7 | V |
| Maximum Supply Voltage, VDD2 to GND2 | -0.5 | +7 | V |
| In-Beam Maximum Supply Voltage VDD1 to GND1 | -0.5 | +7 | V |
| In-Beam Maximum Supply Voltage VDD2 to GND2 | -0.5 | +7 | V |
| IN Voltage | -0.5 | $V_{DD1} + 0.5$ | V |
| \overline{OE} Voltage | -0.5 | $V_{DD2} + 0.5$ | V |
| OUT Voltage | -0.5 | $V_{DD2} + 0.5$ | V |
| Output Current Drive | - | 10 | mA |
| Human Body Model (Tested per AEC-Q100-002) | - | 1.2 | kV |
| Charge Device Model (Tested per AEC-Q100-011) | - | 1.5 | kV |
| Latch-up (Tested per JESD-78E; Class 2, Level A) at +125°C | - | 100 | mA |

3.2 Outgas Testing

| Specification (Tested per ASTM E 595, 1.5) | Value | Unit |
|--|-------|------|
| Total Mass Lost ^[1] | 0.06 | % |
| Collected Volatile Condensable Material ^[1] | <0.01 | % |
| Water Vapor Recovered | 0.03 | % |

1. Outgassing results meet NASA low requirements of total mass loss of <1% and collected volatile condensable material of <0.1%.

3.3 Thermal Information

| Thermal Resistance (Typical) | θ_{JA} (°C/W) ^[1] | θ_{JC} (°C/W) (Top) | θ_{JC} (°C/W) (Bottom) | Ψ_{JT} (°C/W) ^[2] |
|------------------------------|-------------------------------------|-------------------------------|----------------------------------|-----------------------------------|
| 8 Ld NSOIC Package | 60 | 61 | 37 | 10 |

1. θ_{JA} is measured with the component soldered to double-sided board; free air.

2. For Ψ_{JT} characterization parameter, the package top temperature is measured at the top center of the mounted package. See [TB379](#).

| Parameter | Minimum | Maximum | Unit |
|------------------------------|---------------------------|---------|------|
| Power Dissipation, P_D | - | 675 | mW |
| Maximum Junction Temperature | - | +150 | °C |
| Storage Temperature Range | -65 | +150 | °C |
| Pb-Free Reflow Profile | See TB493 | | |

3.4 Recommended Operating Conditions

| Parameter | Minimum | Maximum | Unit |
|--------------------------------------|---------|-----------|---------|
| Ambient Operating Temperature | -55 | +125 | °C |
| Supply Voltage V_{DD1} , V_{DD2} | 3.0 | 5.5 | V |
| IN Logic High Voltage | 2.4 | V_{DD1} | V |
| IN Logic Low Voltage | 0 | 0.8 | V |
| \overline{OE} Logic High Voltage | 2.4 | V_{DD2} | V |
| \overline{OE} Logic Low Voltage | 0 | 0.8 | V |
| Input Signal Rise and Fall Time | - | 1 | μ s |

3.5 Insulation Specifications

| Parameter | Symbol | Test Conditions | Min | Typ | Max | Unit |
|------------------------------------|------------|--|------|-------------------|-----|------------------|
| Creepage Distance (external) | - | - | 4.03 | - | - | mm |
| Total Barrier Thickness (internal) | - | - | 12 | 13 | - | μ m |
| Leakage Current ^[1] | - | 240V _{RMS} , 60Hz | - | 200 | - | nA |
| Barrier Resistance ^[1] | R_{IO} | 500V _{DC} | - | >10 ¹⁴ | - | Ω |
| Barrier Capacitance ^[1] | C_{IO} | 1MHz | - | 1.1 | - | pF |
| Comparative Tracking Index | CTI | Per IEC:60112 | ≥175 | - | - | V |
| Working Voltage | V_{IORM} | Per VDE V 0884-10, V084-11 pending | 600 | - | - | V _{RMS} |
| Barrier Life | - | 100°C, 1000V _{RMS} , 60% Confidence Level activation energy | - | 44000 | - | Years |

1. Device is considered a two terminal device: Pins 1-4 shorted and Pins 5-8 shorted.

3.6 Safety and Approvals

- VDE V 0884-10 (VDE V 0884-11 pending) (Basic Isolation; VDE File Number 5022321-4880-0001)
 - Working voltage (V_{IORM}): 600V_{RMS} (848V_{PK}); basic insulation; pollution degree 2
 - Isolation voltage (V_{ISO}): 2500V_{RMS}
 - Transient overvoltage (V_{IOTM}): 4000V_{PK}
 - Surge rating: 4000V
 - Each part tested at 1590V_{PK} for 1s, 5pC partial discharge limit
 - Samples tested at 4000V_{PK} for 60s; then 1358V_{PK} for 10s with 5pC partial discharge limit

| Safety-Limiting Values | Symbol | Value | Unit |
|--|--------|-------|------|
| Safety Rating Ambient Temperature | T_S | +180 | °C |
| Safety Rating Power | P_S | 270 | mW |
| Supply Current Safety Rating (Total of Supplies) | I_S | 54 | mA |

- UL 1577 (Component Recognition Program File Number E483309)
 - Each part tested at 3000V_{RMS} (4240V_{PK}) for 1s; each lot sample tested at 2500V_{RMS} (3530V_{PK}) for 1min

3.7 Electrical Specifications

Unless otherwise noted, V_{DD1} $V_{DD2} = 3V - 5.5V$; OUT and \overline{OE} are open, V_{DD1} and V_{DD2} are bypassed to GND with a 47nF X7R capacitor; $T_A = T_J = +25^\circ C$. Limits apply across the operating temperature range, $-55^\circ C$ to $+125^\circ C$ unless otherwise stated.

| Parameter | Symbol | Test Conditions | Min ^[1] | Typ | Max ^[1] | Unit |
|---|------------------|---|---------------------|---------------------|--------------------|--------------|
| 3.3V Electrical Specifications | | | | | | |
| Input Quiescent Supply Current Figure 12 | I_{DD1} | - | - | 4 | 40 | μA |
| | | Post Radiation 75krad(Si) | - | 2.6 | 2.8 | mA |
| Output Quiescent Supply Current Figure 13 | I_{DD2} | - | - | 1.2 | 1.75 | mA |
| Logic Input Current | I_I | - | -10 | - | 10 | μA |
| Logic High Output Voltage Figure 20 | V_{OH} | $I_O = -20\mu A, V_I = V_{IH}$ | $V_{DD} - 0.1$ | V_{DD} | - | V |
| | | $I_O = -4mA, V_I = V_{IH}$ | $0.8 \times V_{DD}$ | $0.9 \times V_{DD}$ | - | V |
| Logic Low Output Voltage Figure 21 | V_{OL} | $I_O = 20\mu A, V_I = V_{IL}$ | - | 0 | 0.1 | V |
| | | $I_O = 4mA, V_I = V_{IL}$ | - | 0.5 | 0.8 | V |
| Switching Specifications ($V_{DD} = 3.3V$) | | | | | | |
| Maximum Data Rate | | $C_L = 15pF$ | 130 | 140 | - | Mbps |
| Pulse Width ^[2] | PW | 50% Points, V_O | 10 | 7.5 | - | ns |
| Propagation Delay Input to Output (High-to-Low) Figure 14 | t_{PHL} | $C_L = 15pF$ | - | 12 | 18 | ns |
| Propagation Delay Input to Output (Low-to-High) Figure 15 | t_{PLH} | $C_L = 15pF$ | - | 12 | 18 | ns |
| Propagation Delay Enable to Output (High-to-High Impedance) Figure 22 | t_{PHZ} | $C_L = 15pF$ | - | 3 | 7 | ns |
| Propagation Delay Enable to Output (Low-to-High Impedance) Figure 23 | t_{PLZ} | $C_L = 15pF$ | - | 3 | 7 | ns |
| Propagation Delay Enable to Output (High Impedance-to-High) Figure 24 | t_{PZH} | $C_L = 15pF$ | - | 3 | 7 | ns |
| Propagation Delay Enable to Output (High Impedance-to-Low) Figure 25 | t_{PZL} | $C_L = 15pF$ | - | 3 | 7 | ns |
| Pulse-Width Distortion ^[3] Figure 18 | PWD | $C_L = 15pF$ | - | 1 | 4 | ns |
| Pulse Jitter ^[4] | t_j | $C_L = 15pF$ | - | 100 | | ps |
| Propagation Delay Skew ^[5] | t_{PSK} | $C_L = 15pF$ | - | 4 | 6 | ns |
| Output Rise Time (10% to 90%) Figure 16 | t_R | $C_L = 15pF$ | - | 2 | 5 | ns |
| Output Fall Time (10% to 90%) Figure 17 | t_F | $C_L = 15pF$ | - | 2 | 5 | ns |
| Common-Mode Transient Immunity (Output Logic High or Logic Low) ^[6] | $ CM_H , CM_L $ | $V_{CM} = 1500V_{DC}$, $t_{TRANSIENT} = 25ns$ | 30 | 50 | - | kV/ μs |
| Dynamic Power Consumption ^[7] , Figure 19 | | - | - | 140 | 240 | $\mu A/Mbps$ |
| | | Post Radiation 75krad(Si) | - | 400 | 450 | $\mu A/Mbps$ |
| Magnetic Field Immunity^[8] ($V_{DD2} = 3V, 3V < V_{DD1} < 5.5V$) | | | | | | |
| Power Frequency Magnetic Immunity | H_{PF} | 50Hz/60Hz | 1000 | 1500 | - | A/m |
| Pulse Magnetic Field Immunity | H_{PM} | $t_p = 8\mu s$ | 1800 | 2000 | - | A/m |

Unless otherwise noted, V_{DD1} $V_{DD2} = 3V - 5.5V$; OUT and \overline{OE} are open, V_{DD1} and V_{DD2} are bypassed to GND with a 47nF X7R capacitor; $T_A = T_J = +25^\circ C$. Limits apply across the operating temperature range, $-55^\circ C$ to $+125^\circ C$ unless otherwise stated. **(Cont.)**

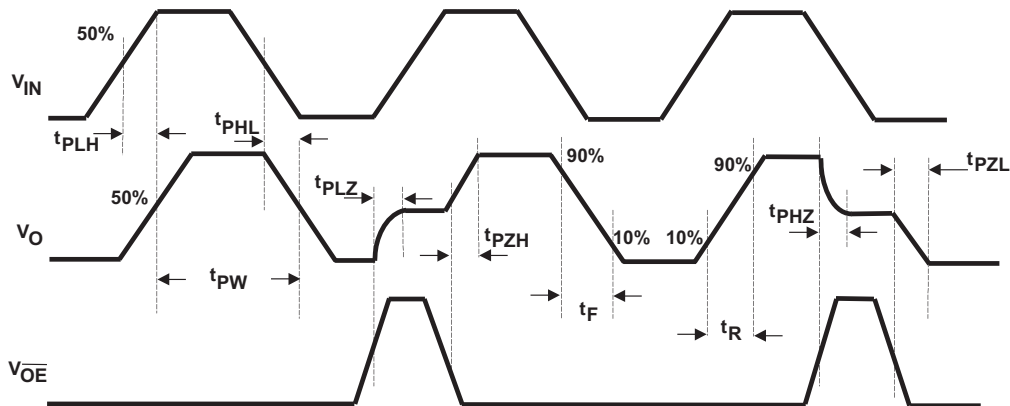
| Parameter | Symbol | Test Conditions | Min ^[1] | Typ | Max ^[1] | Unit |
|---|------------------|---|---------------------|---------------------|--------------------|--------------|
| Damped Oscillatory Magnetic Field | H_{OSC} | 0.1Hz - 1MHz | 1800 | 2000 | - | A/m |
| Cross-Axis Immunity Multiplier ^[9] | K_X | - | - | 2.5 | - | - |
| 5V Electrical Specifications | | | | | | |
| Input Quiescent Supply Current Figure 12 | I_{DD1} | - | - | 6 | 75 | μA |
| | | Post Radiation 75krad(Si) | - | 3 | 3.4 | mA |
| Output Quiescent Supply Current Figure 13 | I_{DD2} | - | - | 1.8 | 2.5 | mA |
| Logic Input Current | I_I | - | -10 | - | 10 | μA |
| Logic High Output Voltage Figure 20 | V_{OH} | $I_O = -20\mu A, V_I = V_{IH}$ | $V_{DD} - 0.1$ | V_{DD} | - | V |
| | | $I_O = -4mA, V_I = V_{IH}$ | $0.8 \times V_{DD}$ | $0.9 \times V_{DD}$ | - | V |
| Logic Low Output Voltage Figure 21 | V_{OL} | $I_O = 20\mu A, V_I = V_{IL}$ | - | 0 | 0.1 | V |
| | | $I_O = 4mA, V_I = V_{IL}$ | - | 0.5 | 0.8 | V |
| Switching Specifications ($V_{DD} = 5V$) | | | | | | |
| Maximum Data Rate | - | $C_L = 15pF$ | 130 | 150 | - | Mbps |
| Pulse Width ^[2] | PW | 50% Points, V_O | 10 | 7.5 | - | ns |
| Propagation Delay Input to Output (High-to-Low) Figure 14 | t_{PHL} | $C_L = 15pF$ | - | 10 | 16 | ns |
| Propagation Delay Input to Output (Low-to-High) Figure 15 | t_{PLH} | $C_L = 15pF$ | - | 10 | 16 | ns |
| Propagation Delay Enable to Output (High-to-High Impedance) Figure 22 | t_{PHZ} | $C_L = 15pF$ | - | 3 | 7 | ns |
| Propagation Delay Enable to Output (Low-to-High Impedance) Figure 23 | t_{PLZ} | $C_L = 15pF$ | - | 3 | 7 | ns |
| Propagation Delay Enable to Output (High Impedance-to-High) Figure 24 | t_{PZH} | $C_L = 15pF$ | - | 3 | 7 | ns |
| Propagation Delay Enable to Output (High Impedance-to-Low) Figure 25 | t_{PZL} | $C_L = 15pF$ | - | 3 | 7 | ns |
| Pulse-Width Distortion ^[3] , Figure 18 | PWD | $C_L = 15pF$ | - | 0.3 | 4 | ns |
| Propagation Delay Skew ^[5] | t_{PSK} | $C_L = 15pF$ | - | 4 | 6 | ns |
| Output Rise Time (10% to 90%) Figure 16 | t_R | $C_L = 15pF$ | - | 1 | 4 | ns |
| Output Fall Time (10% to 90%) Figure 17 | t_F | $C_L = 15pF$ | - | 1 | 4 | ns |
| Common Mode Transient Immunity (Output Logic High or Logic Low) ^[6] | $ CM_H , CM_L $ | $V_{CM} = 1500V_{DC}$, $t_{TRANSIENT} = 25ns$ | 30 | 50 | - | kV/ μs |
| Dynamic Power Consumption ^[7] , Figure 19 | - | - | - | 200 | 340 | $\mu A/Mbps$ |
| | | Post Radiation 75krad(Si) | - | 480 | 530 | $\mu A/Mbps$ |

Unless otherwise noted, V_{DD1} $V_{DD2} = 3V - 5.5V$; OUT and \overline{OE} are open, V_{DD1} and V_{DD2} are bypassed to GND with a 47nF X7R capacitor; $T_A = T_J = +25^\circ C$. Limits apply across the operating temperature range, $-55^\circ C$ to $+125^\circ C$ unless otherwise stated. **(Cont.)**

| Parameter | Symbol | Test Conditions | Min ^[1] | Typ | Max ^[1] | Unit |
|---|-----------|-----------------|--------------------|------|--------------------|------|
| Magnetic Field Immunity^[8] ($V_{DD2} = 5V, 3V < V_{DD1} < 5.5V$) | | | | | | |
| Power Frequency Magnetic Immunity | H_{PF} | 50Hz/60Hz | 2800 | 3500 | - | A/m |
| Pulse Magnetic Field Immunity | H_{PM} | $t_p = 8\mu s$ | 4000 | 4500 | - | A/m |
| Damped Oscillatory Magnetic Field | H_{OSC} | 0.1Hz - 1MHz | 4000 | 4500 | - | A/m |
| Cross-axis Immunity Multiplier ^[9] | K_X | - | - | 2.5 | - | - |

1. Compliance to datasheet limits is assured by one or more methods: production test, characterization, and/or design.
2. Minimum pulse width is the minimum value at which specified PWD is ensured.
3. PWD is defined as $|t_{PHL} - t_{PLH}|$. %PWD is equal to PWD divided by pulse width.
4. 66535-bit pseudo-random binary signal (PRBS) NRZ bit pattern with no more than five consecutive 1s or 0s; 800ps transition time.
5. t_{PSK} is the magnitude of the worst-case difference in t_{PHL} and/or t_{PLH} between devices at $+25^\circ C$.
6. CM_H is the maximum common-mode voltage slew rate that can be sustained while maintaining $V_O > 0.8 V_{DD2}$. CML is the maximum common-mode input voltage that can be sustained while maintaining $V_O < 0.8V$. The common-mode voltage slew rate apply to both rising and falling common-mode voltage edges.
7. Dynamic power consumption is calculated per channel and is supplied by the input side power supply of the channel.
8. The relevant test and measurement methods are given in [Electromagnetic Compatibility](#).
9. External magnetic field immunity is improved by this factor if the field direction is end-to-end rather than pin-to-pin (see [Figure 26](#)).

3.8 Timing Diagram



Legend

| | |
|-----------|---|
| t_{PLH} | Propagation Delay, Low-to-High |
| t_{PHL} | Propagation Delay, High-to-Low |
| t_{PW} | Minimum Pulse Width |
| t_{PLZ} | Propagation Delay, Low-to-High Impedance |
| t_{PZH} | Propagation Delay, High Impedance-to-High |
| t_{PHZ} | Propagation Delay, High-to-High Impedance |
| t_{PZL} | Propagation Delay, High Impedance-to-Low |
| t_R | Rise Time |
| t_F | Fall Time |

Figure 5. Timing Diagram

4. Typical Performance Curves

$T_A = +25^\circ\text{C}$, unless otherwise specified.

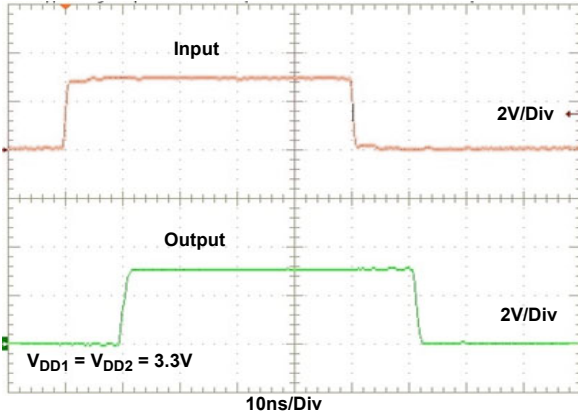


Figure 6. 10MHz Input and Output Waveforms

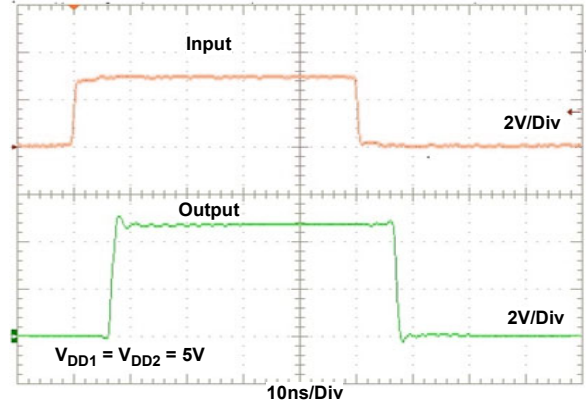


Figure 7. 10MHz Input and Output Waveforms

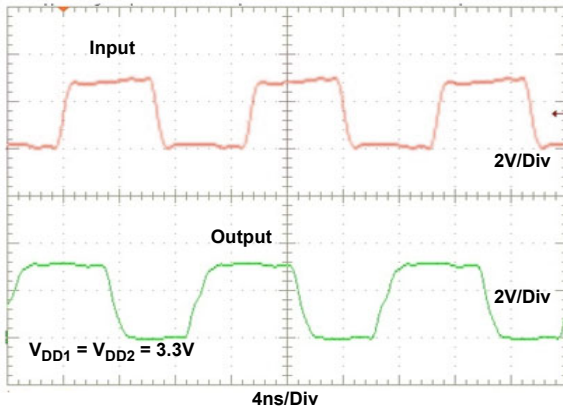


Figure 8. 75MHz Input and Output Waveforms

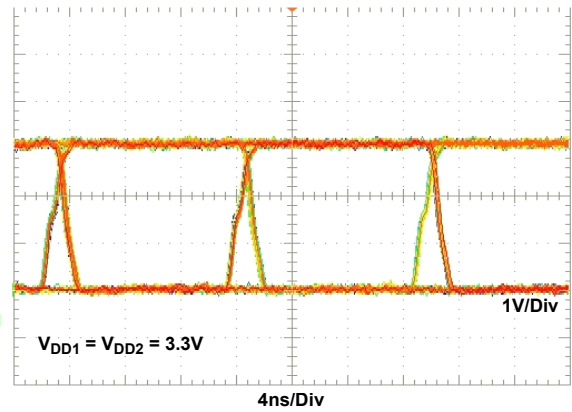


Figure 9. 75Mbps Eye Diagram

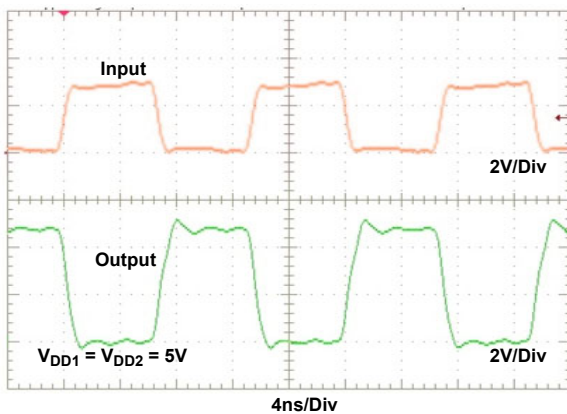


Figure 10. 75MHz Input and Output Waveforms

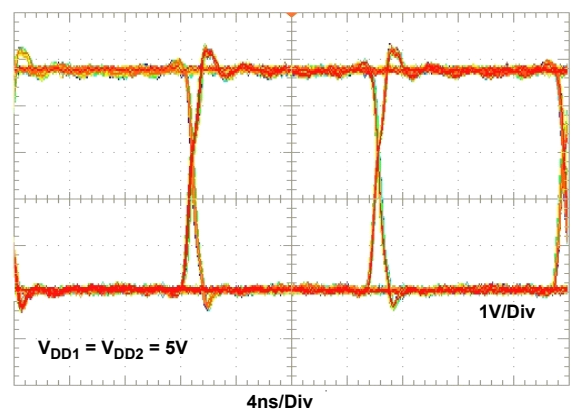


Figure 11. 75Mbps Eye Diagram

T_A = +25°C, unless otherwise specified. (Cont.)

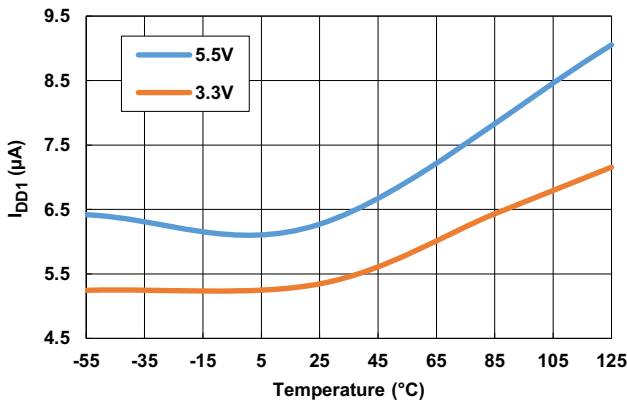


Figure 12. Input Quiescent Supply Current vs Temperature vs V_{DD1} Voltage

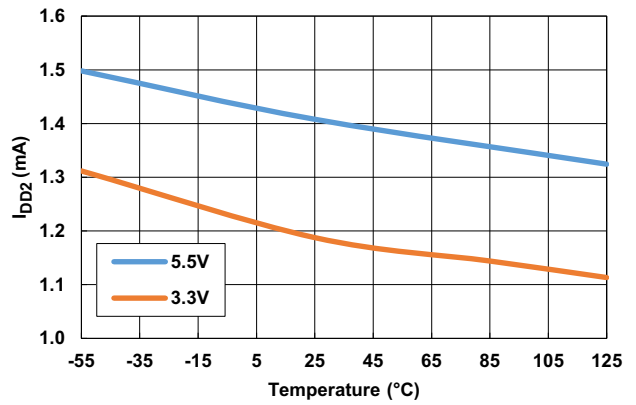


Figure 13. Output Quiescent Supply Current vs Temperature vs V_{DD2} Voltage

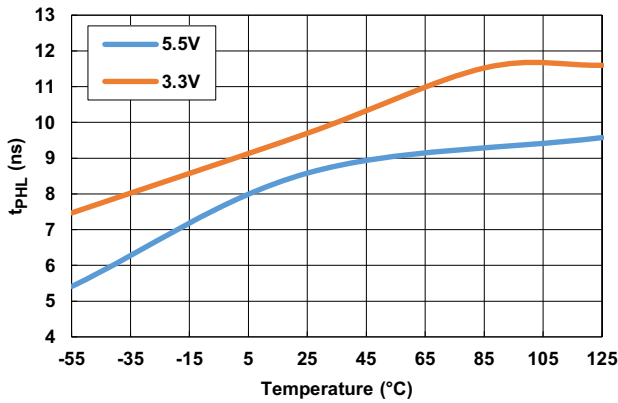


Figure 14. Propagation Delay (High-to-Low) vs Temperature vs V_{DD} Voltage

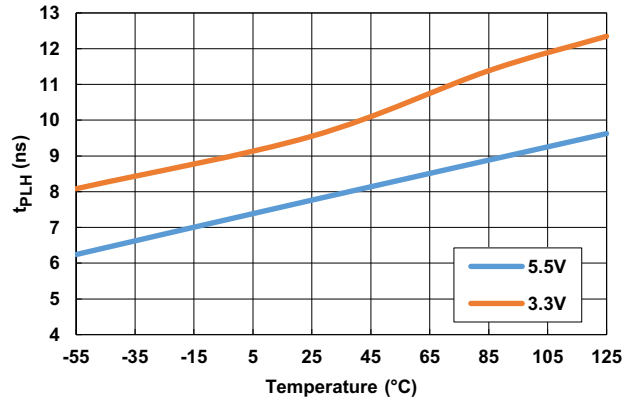


Figure 15. Propagation Delay (Low-to-High) vs Temperature vs V_{DD} Voltage

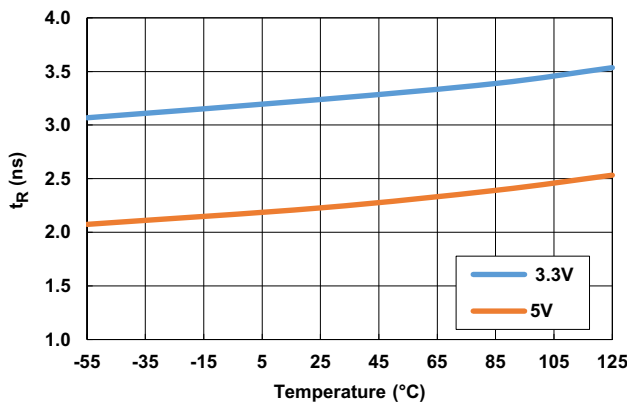


Figure 16. Output Rise Time vs Temperature vs V_{DD} Voltage

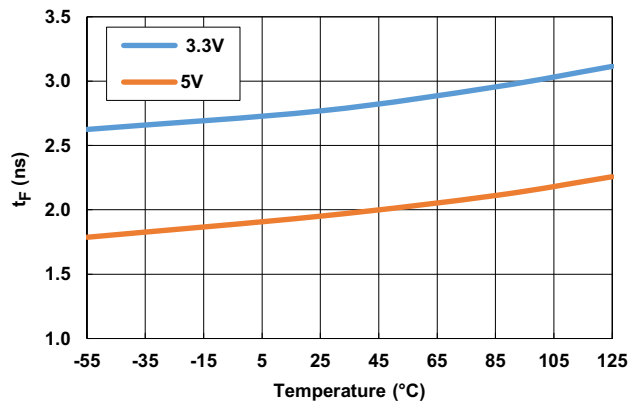


Figure 17. Output Fall Time vs Temperature vs V_{DD} Voltage

T_A = +25°C, unless otherwise specified. (Cont.)

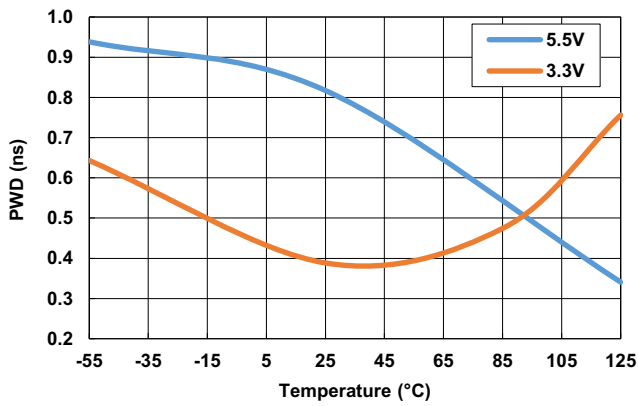


Figure 18. 5.5V Pulse-Width Distortion vs Temperature vs V_{DD} Voltage

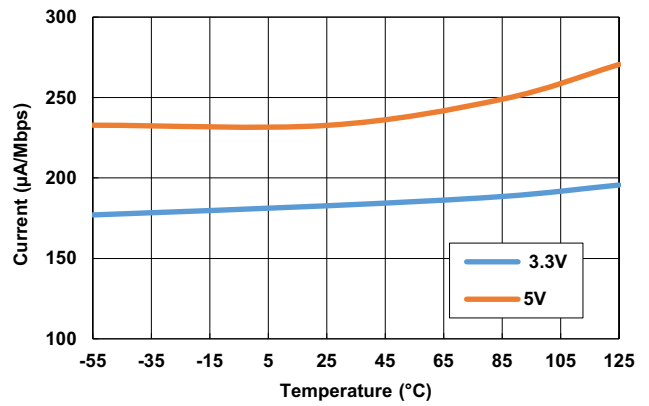


Figure 19. Dynamic Power Consumption vs Temperature

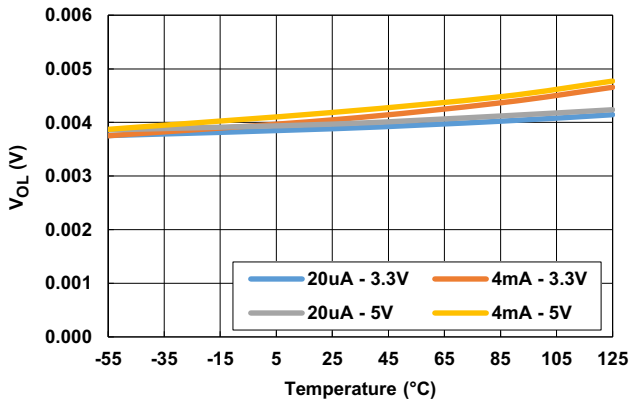


Figure 20. Logic Low Output Voltage vs Temperature

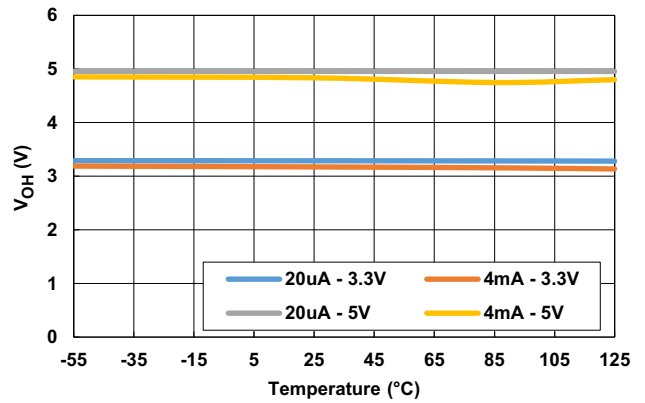


Figure 21. Logic High Output Voltage vs Temperature

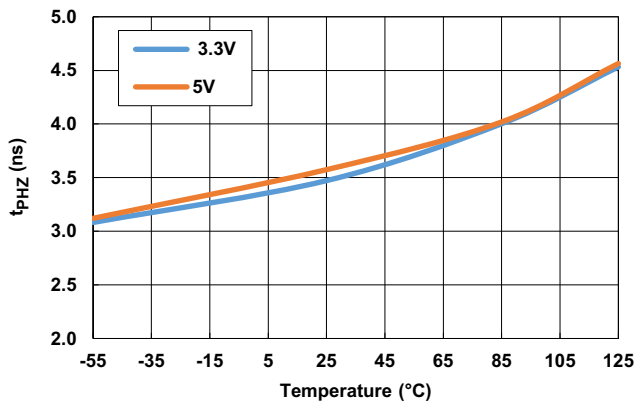


Figure 22. Propagation Delay Enable to Output (High-to-High Impedance) vs Temperature

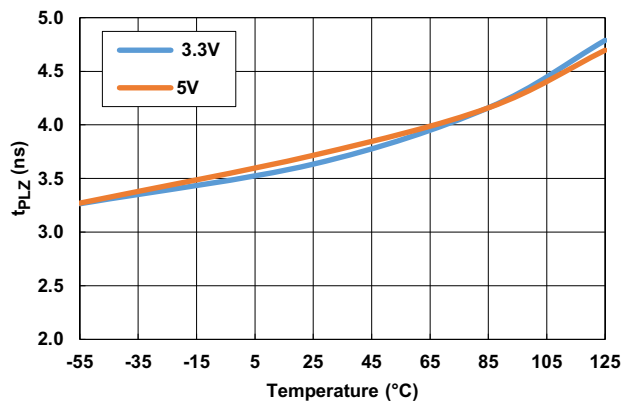


Figure 23. Propagation Delay Enable to Output (Low-to-High Impedance) vs Temperature

T_A = +25°C, unless otherwise specified. (Cont.)

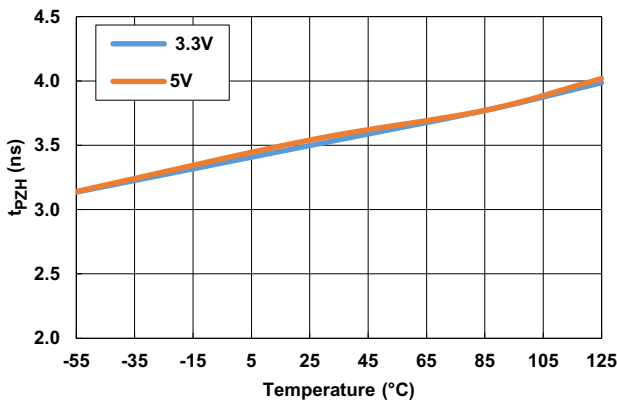


Figure 24. Propagation Delay Enable to Output (High Impedance-to-High) vs Temperature

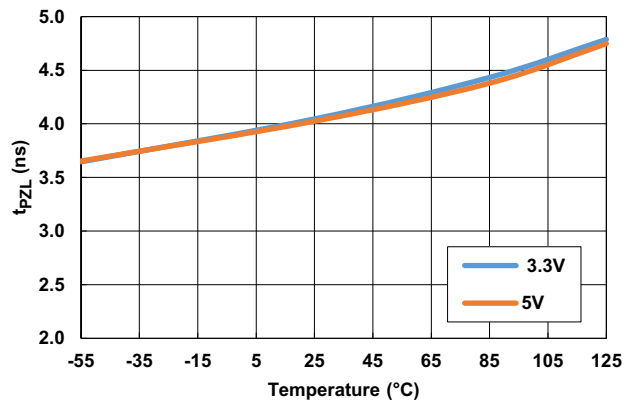


Figure 25. Propagation Delay Enable to Output (High Impedance-to-Low) vs Temperature

5. Device Information

5.1 Electrostatic Discharge Sensitivity

This product has been tested for electrostatic sensitivity to the limits stated in [Absolute Maximum Ratings](#). However, Renesas recommends that all integrated circuits are handled with appropriate care to avoid damage. Damage caused by inappropriate handling or storage could range from performance degradation to complete failure.

5.2 Electromagnetic Compatibility

The ISL71710SLHM has the lowest EMC footprint of any isolation technology. Its Wheatstone bridge configuration and differential magnetic field signaling ensure excellent EMC performance against all relevant standards.

Immunity to external magnetic fields is even higher if the field direction is end-to-end rather than pin-to-pin as shown in [Figure 26](#):

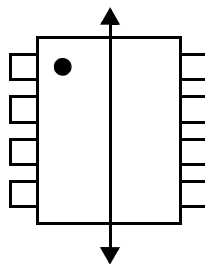


Figure 26. Cross-Axis Field Direction

5.3 Dynamic Power Consumption

The ISL71710SLHM achieves its low power consumption from the way it transmits data across the isolation barrier. By detecting the edge transitions of the input logic signal and converting these to narrow current pulses, a magnetic field is created around the GMR Wheatstone bridge. Depending on the direction of the magnetic field, the bridge causes the output comparator to switch following the input logic signal. The power consumption is independent of mark-to-space ratio and solely dependent on frequency, because the current pulses are narrow, about 2.5ns. This has obvious advantages over optocouplers, which have power consumption heavily dependent on mark-to-space ratio.

5.4 Power Supply Decoupling

Decouple both power supplies to this device with low ESR 47nF ceramic capacitors. Ground planes for both GND1 and GND2 are highly recommended for data rates above 10Mbps. Capacitors must be located as close as possible to the VDD pins.

5.5 Signal Status on Start-Up and Shutdown

To minimize power dissipation, input signals are differentiated and then latched on the output side of the isolation barrier to reconstruct the signal. This could result in an indeterminate output state depending on power up, shutdown, and power loss sequencing. Therefore, consider including an initialization signal in the start-up circuit. Initialization consists of toggling the input either high then low, or low then high.

Complete the following supply sequencing steps to ensure the output starts in a known output state:

1. Start with the VDD1, VDD2, IN, and \overline{OE} pins all at 0V.
2. Ramp the VDD1 power supply ON.
3. Turn the IN signal source ON.
4. Toggle the IN input from high to low to put the part in the Low state or toggle it from low to high to put the part in the High state.
5. Ramp the VDD2 power supply ON. It starts in the state set in Step 4.

5.6 Data Transmission Rates

The reliability of a transmission system is directly related to the accuracy and quality of the transmitted digital information. For a digital system, parameters that determine the limits of the data transmission are pulse-width distortion and propagation delay skew.

Propagation delay is the time taken for the signal to travel through the device. This is usually different when sending a low-to-high signal than when sending a high-to-low signal. This difference, or error, is called Pulse-Width Distortion (PWD) and is usually in nanoseconds. It may also be expressed as a percentage:

$$\text{PWD}\% = [\text{Maximum Pulse-Width Distortion (ns)}/\text{Signal Pulse Width (ns)}] \times 100\%$$

For example, with data rates of 12.5Mbps:

$$\text{PWD}\% = [3\text{ns}/80\text{ns}] \times 100\% = 3.75\%$$

This figure is almost three times better than any available optocoupler with the same temperature range, and two times better than any optocoupler regardless of published temperature range. The ISL71710SLHM exceeds the 10% maximum PWD recommended by PROFIBUS, and runs to nearly 35Mbps within the 10% limit.

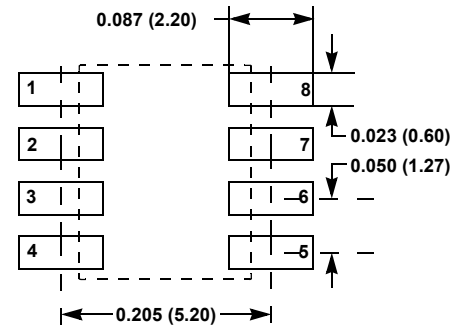
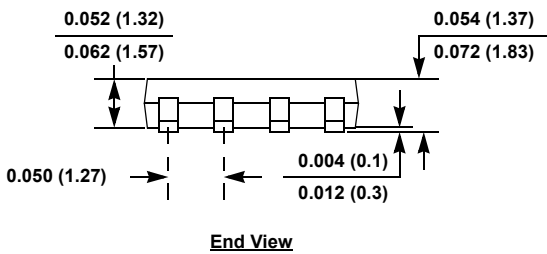
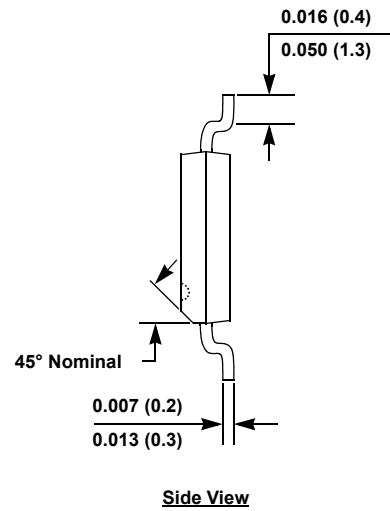
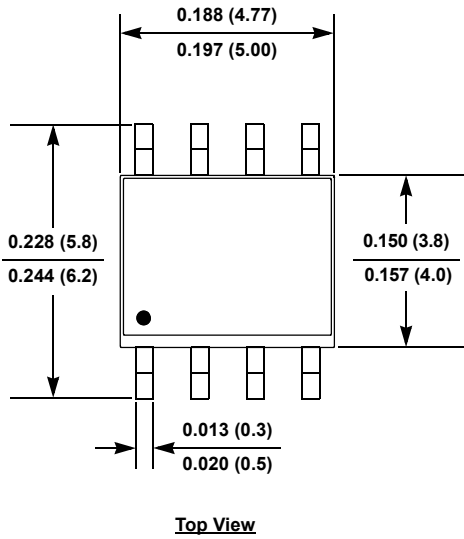
Propagation delay skew is the signal propagation difference between two or more channels. This becomes significant in clocked systems because it is undesirable for the clock pulse to arrive before the data has settled. Short propagation delay skew is therefore especially critical in high data rate parallel systems for establishing and maintaining accuracy and repeatability. Worst-case channel-to-channel skew in an ISL71710SLHM isolator is only 4ns, which is ten times better than any optocoupler. ISL71710SLHM isolators have a maximum propagation delay skew of 6ns, which is five times better than any optocoupler.

6. Package Outline Drawing

For the most recent package outline drawing, see [M8.15G](#).

M8.15G

8 Lead Narrow Body Small Outline Plastic Package
Rev 2, 10/18



Typical Recommended Land Pattern

Notes:

1. Dimensions in inches (mm); scale = approximately 5X.
2. Pin spacing is a BASIC dimension; tolerances do not accumulate.

7. Ordering Information

| Part Number ^{[1][2]} | Part Marking | Radiation Tolerance (Total Ionizing Dose) | Package Description (RoHS Compliant) | Pkg. Dwg # | Carrier Type | Temp. Range |
|-------------------------------|------------------|--|---|---------------|-----------------|---------------|
| ISL71710SLHMBZ | 71710MBZ | LDR to 75krad(Si) | 8 Ld NSOIC | M8.15G | Tray | -55 to +125°C |
| ISL71610-710EV1Z | Evaluation Board | | | | | |

1. These Pb-free plastic packaged products employ special Pb-free material sets; molding compounds/die attach materials and NiPdAu-Ag plate-e4 termination finish, which is RoHS compliant and compatible with both SnPb and Pb-free soldering operations. Pb-free products are MSL classified at Pb-free peak reflow temperatures that meet or exceed the Pb-free requirements of IPC/JEDEC J-STD-020.
2. For Moisture Sensitivity Level (MSL), see the Product Options on the [ISL71710SLHM](#) product page (click the packaging icon). For more information about MSL, see [TB363](#).

8. Revision History

| Revision | Date | Description |
|----------|--------------|---------------------------|
| 1.01 | Dec 1, 2023 | Updated Features section. |
| 1.00 | Jul 26, 2021 | Initial release |

IMPORTANT NOTICE AND DISCLAIMER

RENESAS ELECTRONICS CORPORATION AND ITS SUBSIDIARIES (“RENESAS”) PROVIDES TECHNICAL SPECIFICATIONS AND RELIABILITY DATA (INCLUDING DATASHEETS), DESIGN RESOURCES (INCLUDING REFERENCE DESIGNS), APPLICATION OR OTHER DESIGN ADVICE, WEB TOOLS, SAFETY INFORMATION, AND OTHER RESOURCES “AS IS” AND WITH ALL FAULTS, AND DISCLAIMS ALL WARRANTIES, EXPRESS OR IMPLIED, INCLUDING, WITHOUT LIMITATION, ANY IMPLIED WARRANTIES OF MERCHANTABILITY, FITNESS FOR A PARTICULAR PURPOSE, OR NON-INFRINGEMENT OF THIRD PARTY INTELLECTUAL PROPERTY RIGHTS.

These resources are intended for developers skilled in the art designing with Renesas products. You are solely responsible for (1) selecting the appropriate products for your application, (2) designing, validating, and testing your application, and (3) ensuring your application meets applicable standards, and any other safety, security, or other requirements. These resources are subject to change without notice. Renesas grants you permission to use these resources only for development of an application that uses Renesas products. Other reproduction or use of these resources is strictly prohibited. No license is granted to any other Renesas intellectual property or to any third party intellectual property. Renesas disclaims responsibility for, and you will fully indemnify Renesas and its representatives against, any claims, damages, costs, losses, or liabilities arising out of your use of these resources. Renesas' products are provided only subject to Renesas' Terms and Conditions of Sale or other applicable terms agreed to in writing. No use of any Renesas resources expands or otherwise alters any applicable warranties or warranty disclaimers for these products.

(Disclaimer Rev.1.0 Mar 2020)

Corporate Headquarters

TOYOSU FORESIA, 3-2-24 Toyosu,
Koto-ku, Tokyo 135-0061, Japan
www.renesas.com

Contact Information

For further information on a product, technology, the most up-to-date version of a document, or your nearest sales office, please visit:
www.renesas.com/contact/

Trademarks

Renesas and the Renesas logo are trademarks of Renesas Electronics Corporation. All trademarks and registered trademarks are the property of their respective owners.