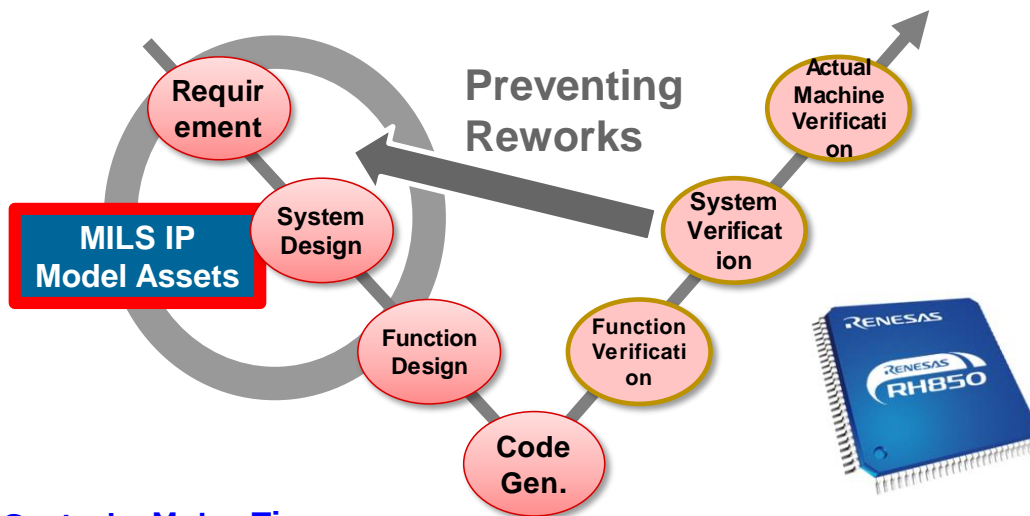


HEV/EV Motor Control IP MILS Models

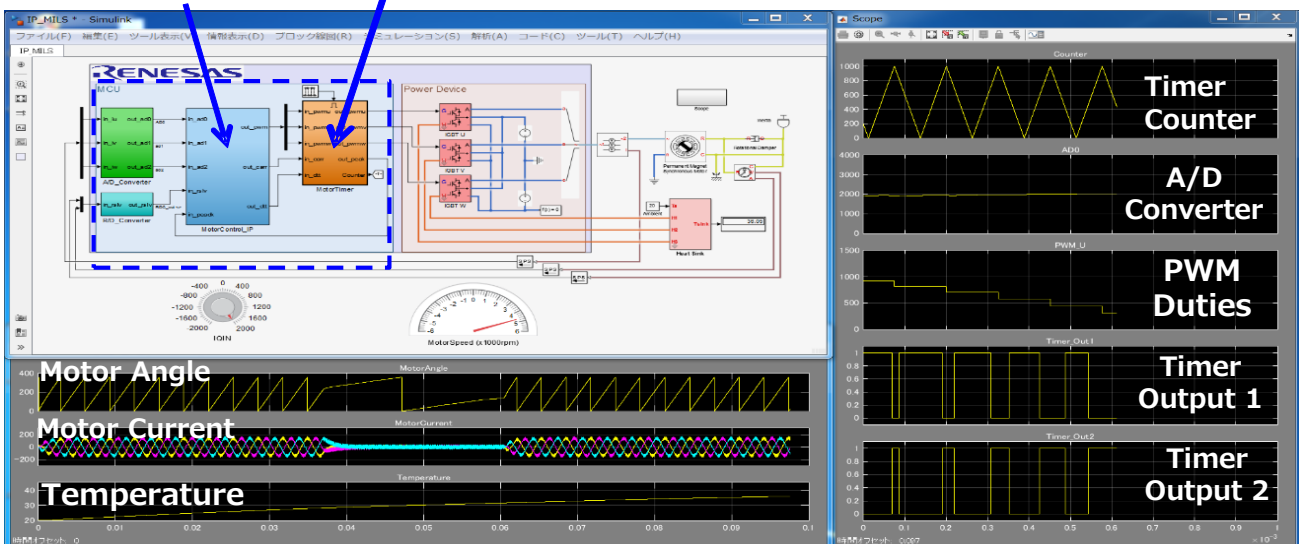
Contribute to reduce prototype verification bug in MBD
And to drastically reduce development period

Features

- Model-based development environment utilizing semiconductor characteristics
- Realize Simulink® model of MCU IP that behave similar to actual devices



Motor Control IP Model Motor Timer IP Model



Contact Address:
Solution Planning Department, Shared R&D Division1,
Renesas Electronics Corporation
E-mail: mbd-solution@lm.renesas.com

RH850/C1M-A MCU IP Model

Available

IP : Intellectual Property Core
MILS : Model-In-the-Loop Simulation

Simulink® is trade mark of MathWorks

Renesas Electronics Corporation
www.renesas.com