

RF Products Evaluation System (EVS) Digital Control Software

Renesas offers a wide range of high-performance RF products, many of which can be controlled with serial and/or parallel interfaces.

To aid its customers with testing these devices, Renesas has developed a Product Evaluation Solution (EVS). The Renesas EVS kit consists of the following:

- A standard Product Evaluation Kit, EVKIT (the product mounted on an evaluation board)
- The RF Digital Control Board
- All necessary cabling
- The RF Digital Control Software downloaded from Renesas' website

The purpose of this document is to assist customers with properly setting up the EVS hardware and software to control the product on an evaluation board or EVKIT.

Note: IDT is referenced throughout this document. IDT is now a part Renesas Electronics.

Contents

1. Requirements	3
2. RF Digital Control Software Overview	3
3. Customer Tools and Resources	4
4. Software Installation Procedure	4
5. RF Digital Control Board	8
5.1 RF Digital Control Board Information.....	8
6. Cable Connection	9
6.1 RF Digital Control Board.....	9
6.2 F1950EVB	10
6.2.1. Serial Control Mode	10
6.2.2. Parallel Control Mode.....	11
6.3 F1951EVB	12
6.3.1. Serial Control Mode	12
6.4 F1953EVB	13
6.4.1. Serial Control Mode	13
6.4.2. Parallel Control Mode.....	14
6.5 F1956EVB	15
6.5.1. Serial Control Mode	15
6.5.2. Parallel Control Mode.....	16
6.6 F1912EVB	17
6.6.1. Serial Control Mode	17
6.6.2. Parallel Control Mode.....	18
6.7 F1975EVB	19
6.7.1. Serial Mode	19
6.7.2. Parallel Mode	20

6.8	F1977EVB	21
6.8.1.	Serial Mode	21
6.8.2.	Parallel Control Mode.....	22
6.9	F1200EVB	23
6.9.1.	Serial Mode	23
6.9.2.	Parallel Mode	24
6.10	F1240EVB	25
6.10.1.	Serial Mode	25
6.10.2.	Parallel Mode	26
6.11	F1241EVB	27
6.11.1.	Parallel Mode	27
6.12	F0480EVB	29
6.12.1.	Serial Mode	29
6.13	Device Configuration	30
7.	Software Application	31
7.1	Software Installation	31
7.2	Software Interface.....	31
7.2.1.	Pin Configuration.....	31
7.2.2.	Device	31
7.2.3.	Device Mode	31
7.2.4.	Attenuation Setting.....	32
7.2.5.	Status	32
7.2.6.	Stop	32
7.2.7.	Address	32
7.2.8.	Channel B.....	32
7.3	Parallel Control Option	32
7.4	EEPROM	33
8.	Test Environment	35
9.	Supported Devices	35
10.	Revision History	35

1. Requirements

Table 1. Requirements

Customer-supplied hardware	<p>Computer or laptop:</p> <ul style="list-style-type: none"> ▪ Must run the Microsoft Windows™ Operating Systems ▪ Customer must use powered USB port on the computer or laptop to the RF Digital Control Board <p>Power supply:</p> <ul style="list-style-type: none"> ▪ Customer must provide a separate regulated 3 to 5 V input to the Product EV_{KIT} V_{dd} connection
Renesas-supplied hardware	<ul style="list-style-type: none"> ▪ RF Digital Control Board (USB-based) ▪ USB Type A to USB-C cable ▪ Ribbon Cable (connects RF Digital Control Board to Product EV_{KIT}) ▪ Renesas' Product EV_{KIT}
Renesas supplied software	<ul style="list-style-type: none"> ▪ RF Digital Control Software downloaded from www.renesas.com

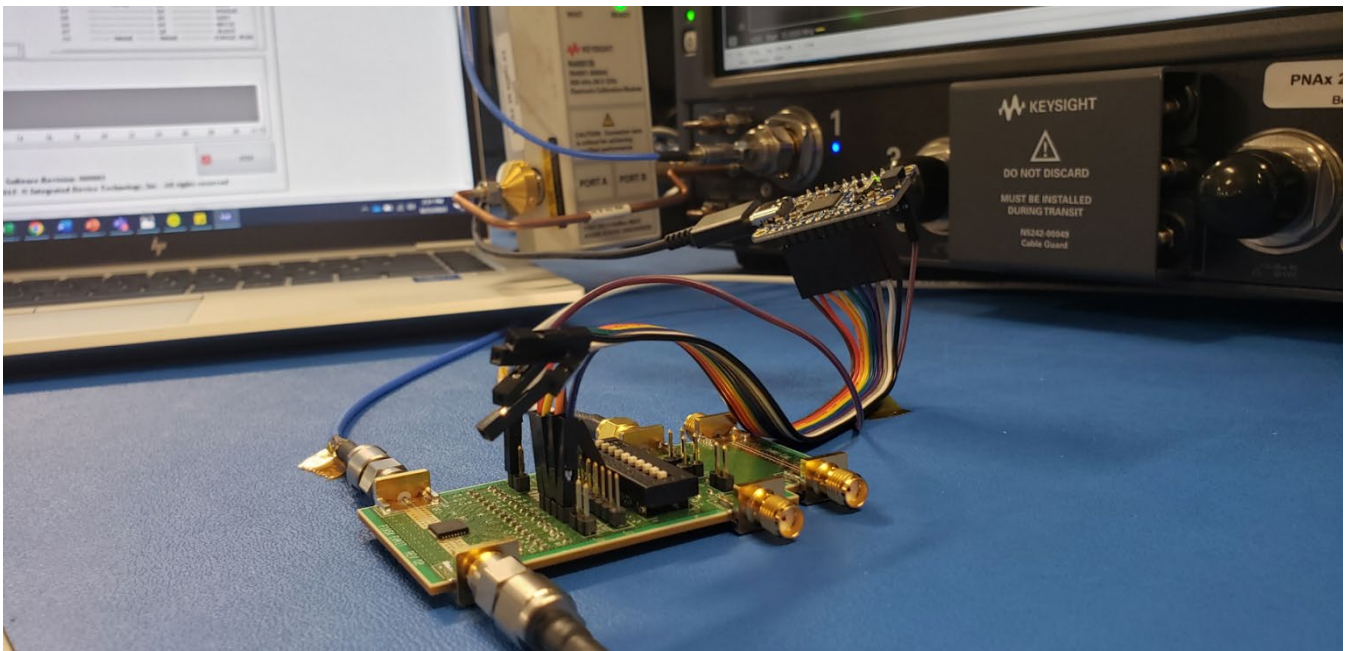


Figure 1. EVS Hardware Configuration

2. RF Digital Control Software Overview

The RF Digital Control Software is a compiled LabVIEW application that controls Renesas' Product EV_{KIT} using the RF Digital Control Board. The RF Digital Control Board utilizes FTDI's USB to serial/parallel converter chip, which has been assembled by AdaFruit. The RF Digital Control Software does not require users to have LabVIEW software installed. The installation application, will install all the drivers and runtime engines needed.

3. Customer Tools and Resources

Renesas provides customers with the following tools and support as part of the EVS solution:

- This Application Note
- EVS Configuration and Installation Video available at www.renesas.com.
- RF Digital Control Software available at www.renesas.com.
- RF Device Datasheets provide detailed information on the EV_{KIT}. Available at www.renesas.com.

4. Software Installation Procedure

After downloading the RF Digital Control Software from www.renesas.com the file, must be uncompressed. Windows should do this automatically. From this folder right-click on the file **Setup** (Figure 2), then select **Run as administrator**. The installation wizard will install the LabVIEW runtime engine, the drivers for the RF Digital Control Board, and the user interface to control the products.

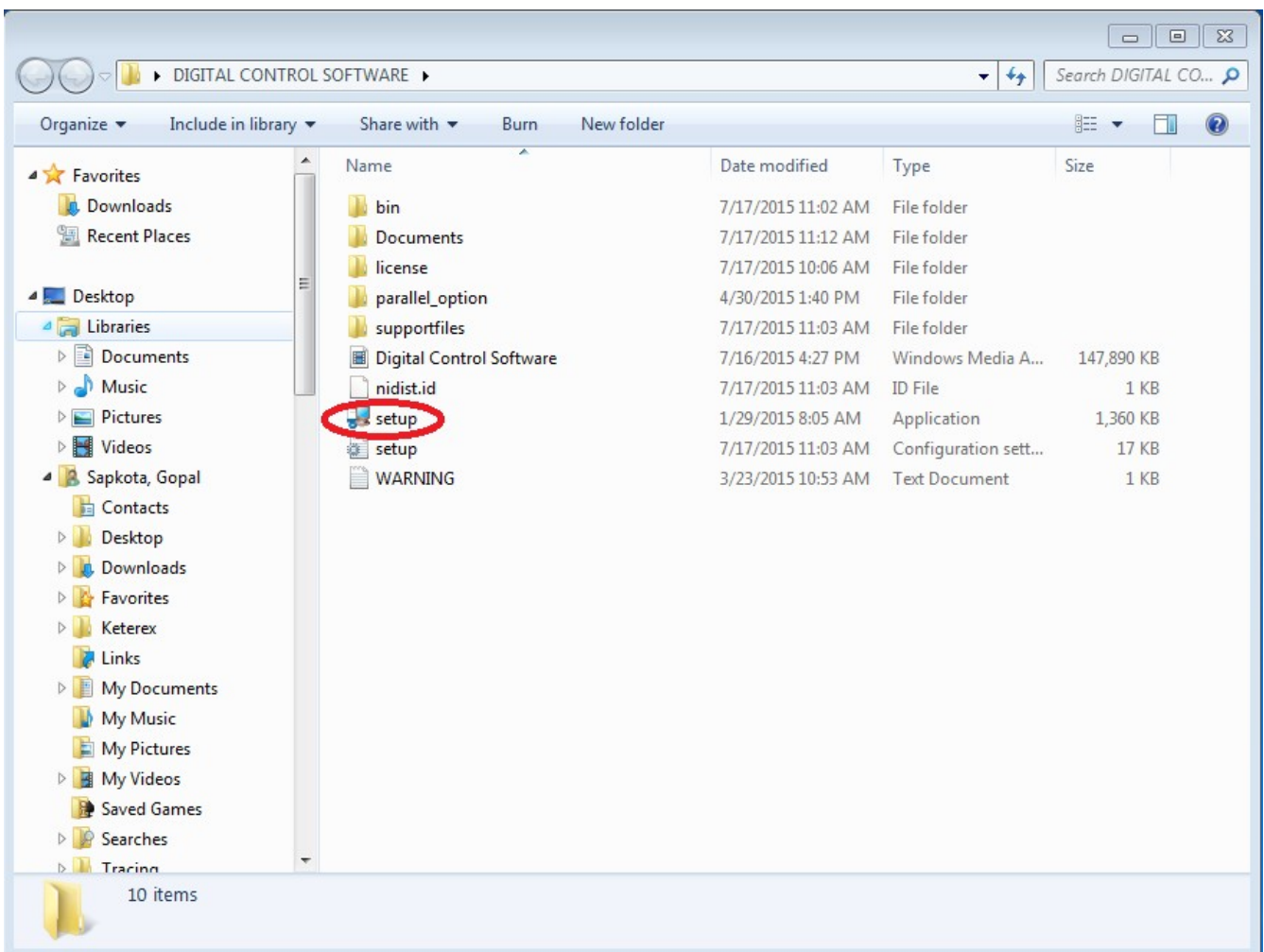


Figure 2. Software Installer Zip Folder

Once the installation wizard starts, you can choose the destination directory (folder) to place the application file. Click **Next** once you have chosen the destination directory.

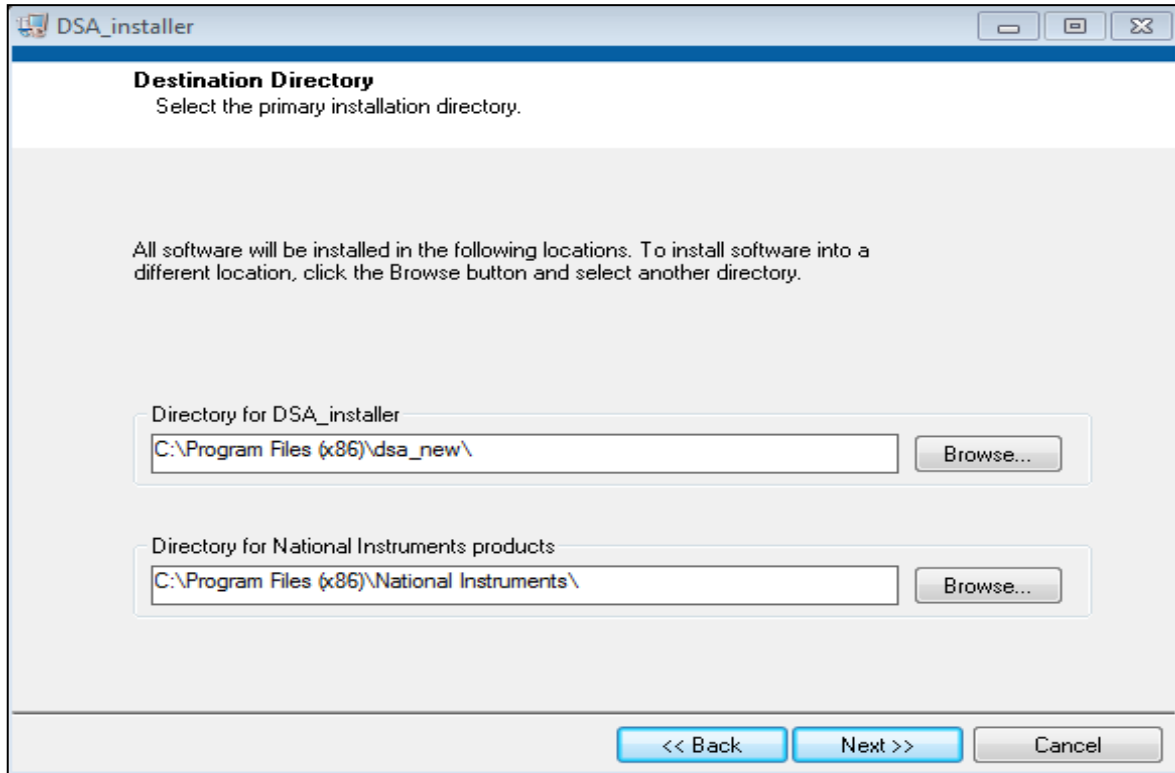


Figure 3. Directory Locations for Software Installer File Folder

The next step is to accept the software license agreement. Please read the license terms and conditions carefully and accept the license agreement. *The software will not be installed without accepting the software license agreement.*

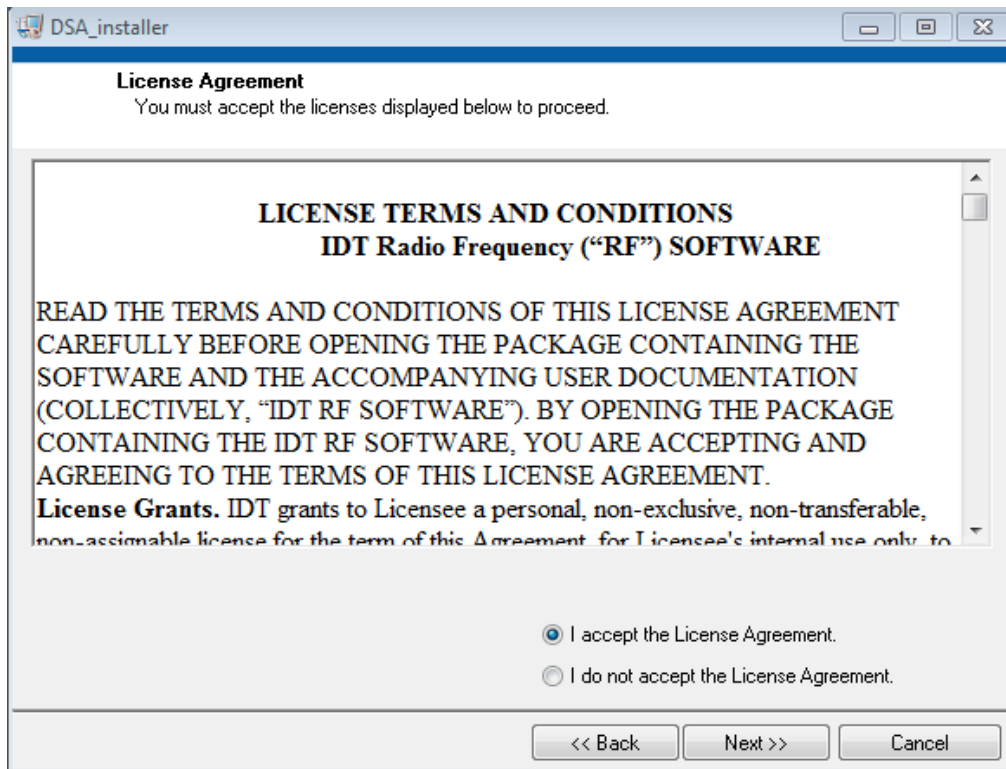


Figure 4. License Terms and Conditions

Once the installation is complete, a shortcut for the application is automatically stored on the user's desktop.

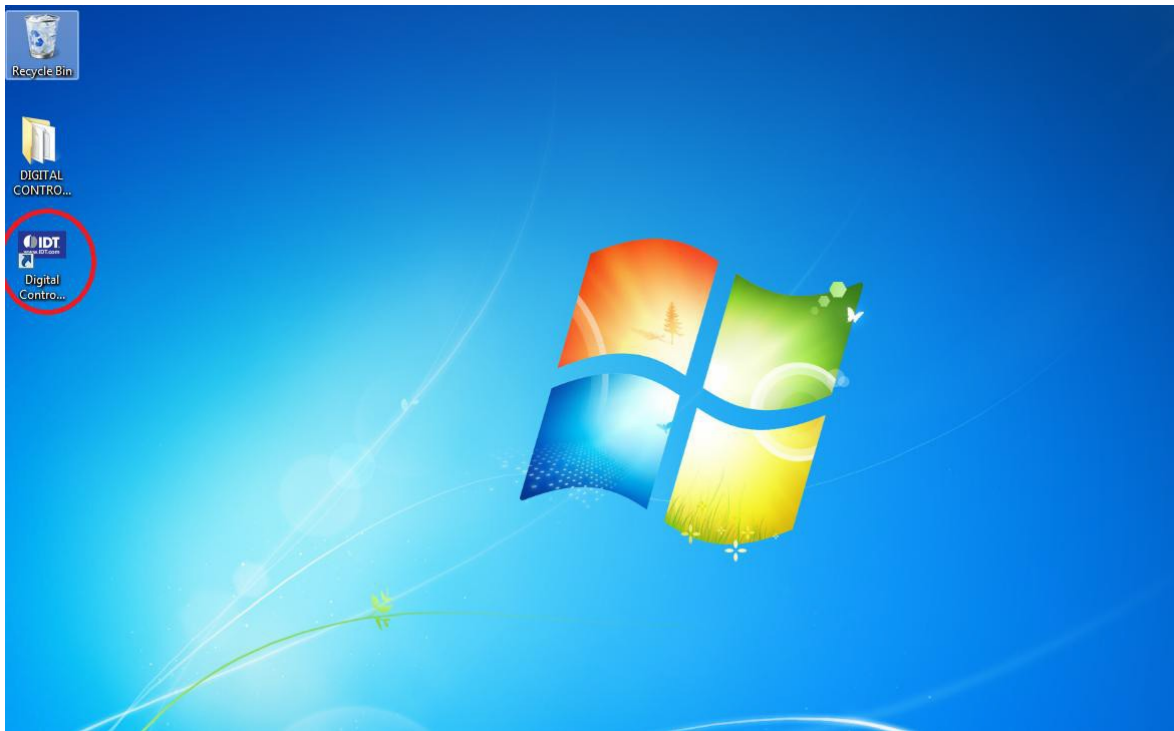


Figure 5. RF Digital Control Software stored on User's Desktop

After the Digital Software Control application installation is complete, the software will load the necessary drivers for the RF Digital Control Board which use the FTDI chip. The device driver installation wizard will automatically start running. Click the **Extract** button to continue the installation of FTDI's device driver.

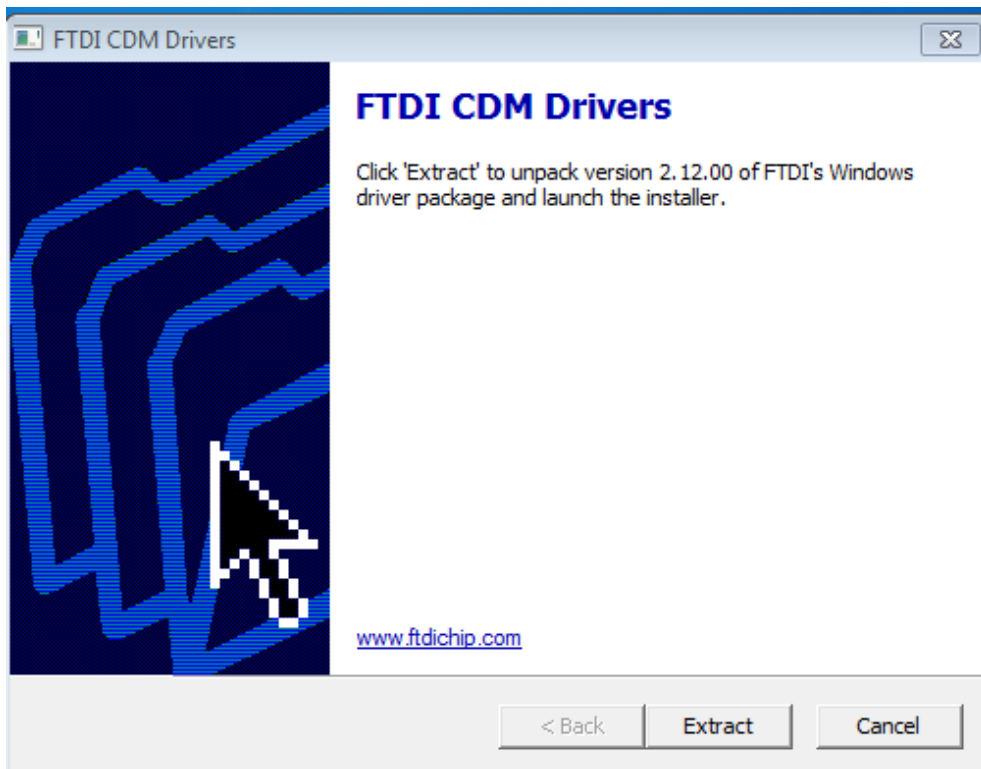


Figure 6. FTDI's Device Driver Installation

Please accept the license agreement and click **Next** to finish the installation of FTDI's device driver. Once the installation is complete, users can run the RF Digital Control Software Application.

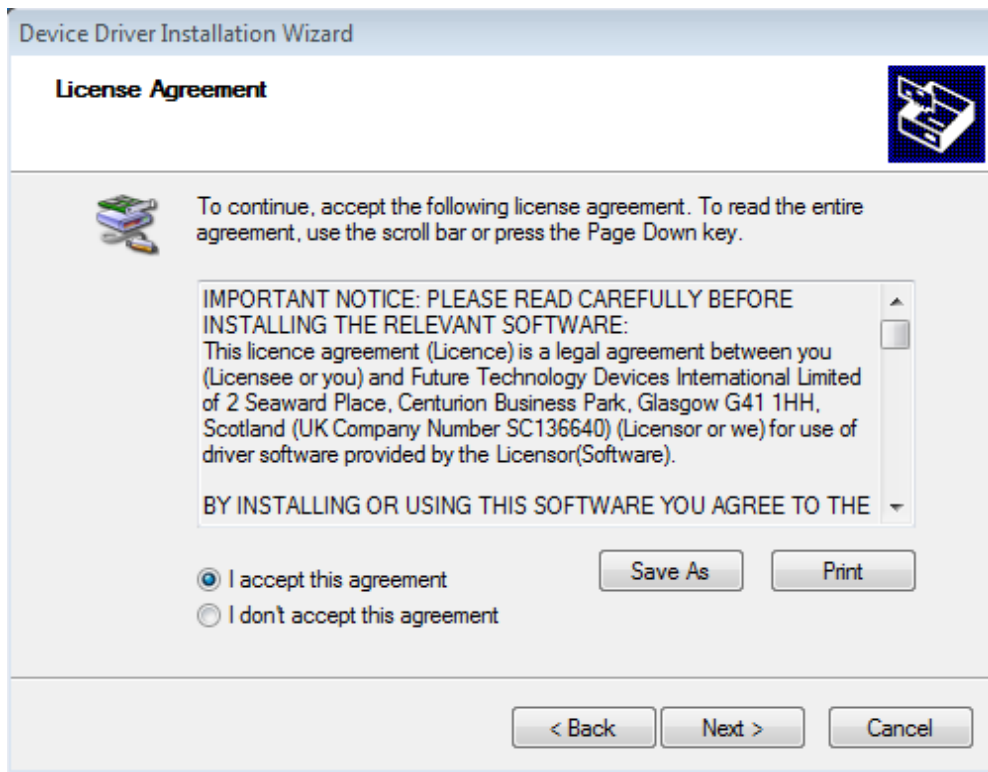


Figure 7. FTDI's Device Driver License Agreement

5. RF Digital Control Board

5.1 RF Digital Control Board Information

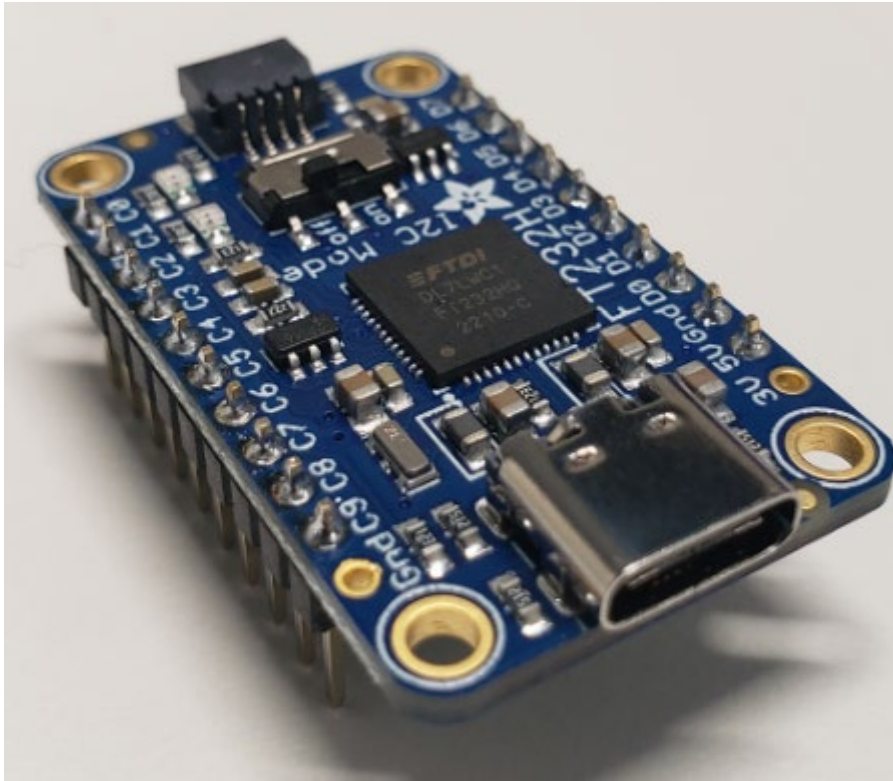


Figure 8. RF Digital Control Board

The RF Digital Control Board was developed by AdaFruit, which uses FTDI's FT232H chip. There are two headers with 10-pins used for making digital connection. The header uses standard 100 mil spacing between the pins.

Datasheets for Renesas' Product EVKIT and the RF Digital Control Board datasheet can be found at the following links:

- RF Digital Control Board – http://www.ftdichip.com/Support/Documents/DataSheets/ICs/DS_FT232H.pdf
- DSA – <https://www.renesas.com/us/en/products/rf-products>

6. Cable Connection

Cables are provided to make the connection between the RF Digital Control Board and the Product EV_{KIT}. Please refer to each figure and table below for correct pin connections using the cable.

Note: The Product EVKIT may get damaged if proper procedures are not used.

6.1 RF Digital Control Board

The USB Type A to USB-C cable is connected from the computer to the RF Digital Control Board. Please refer to the pin configuration tables for each product below for correct connection from the RF Digital Control Board to the Product EV_{KIT}.

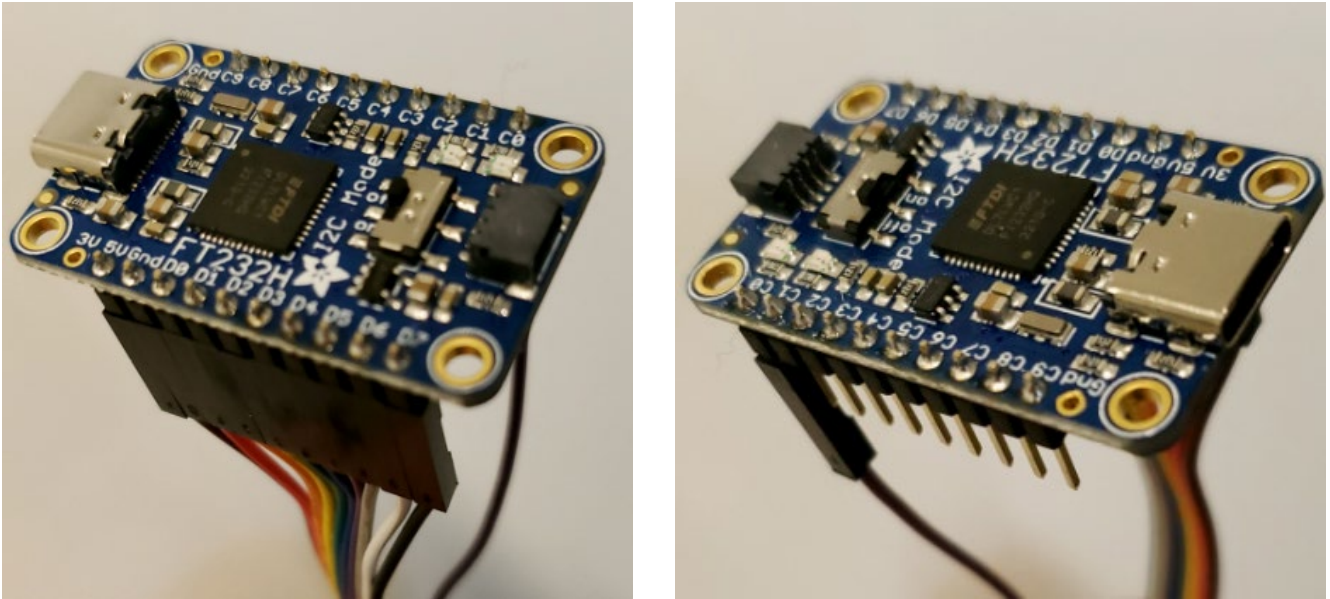


Figure 9. Top and Side Views of Cable Connections of RF Digital Control Board

Figure 9 shows the pin connection on the RF Digital Control Board. The ribbon cable is connector to the right-side header (when looking into the USB connector). Make the brown cable align with the 5V pin and the black cable with pin D7. A single wire is used to make a connection from the C0 pin of the RF Digital Control Board to the VMODE pin of the Product EV_{KIT}.

6.2 F1950EVB

6.2.1. Serial Control Mode

Users should connect a supply voltage between 3V to 5V to VDD of the F1950EVB (Product EVKIT). For the correct serial pin connection between the RF Digital Control Board and the F1950EVB, see the following figure and table.

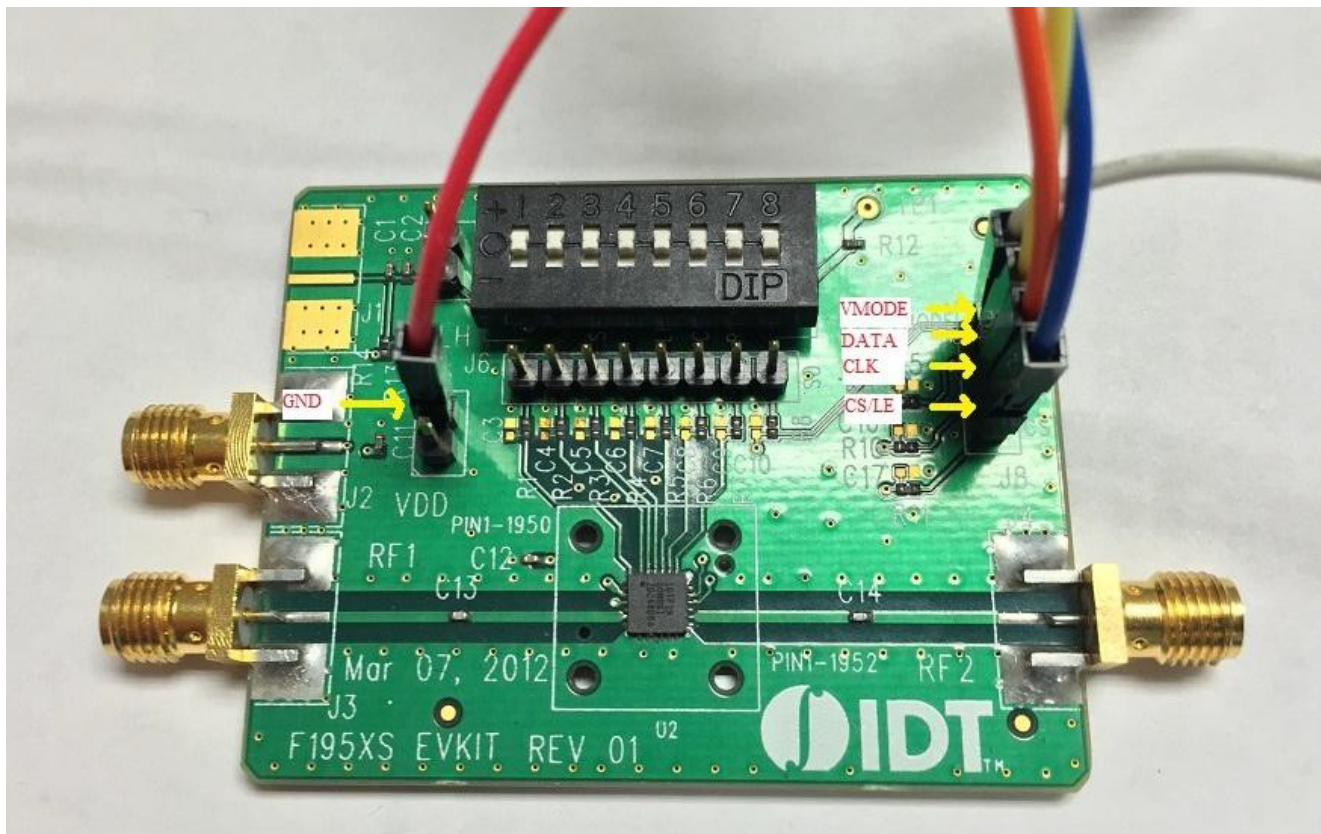


Figure 10. Serial Mode Pin Connection for F1950EVB

Table 2. Serial Mode Pin Connection for F1950 EVB

RF Digital Control Board	Wire Color	F1950EVB Board Pin	RF Digital Control Board	Wire Color	F1950EV Board Pin
C9			5V	BROWN	
C8			GND	RED	GND
C7			D0	ORANGE	CK
C6			D1	YELLOW	DATA
C5			D2	GREEN	
C4			D3	BLUE	CS/LE
C3			D4	PURPLE	
C2			D5	GREY	
C1			D6	WHITE	
C0	Single Wire	VMODE	D7	BLACK	

6.2.2. Parallel Control Mode

For parallel control mode, users need to run the “EPROG” application to program the CBUS pin of the RF Digital Control Board. The supply voltage for the VDD should be between 3V to 5V. For the correct direct/latched parallel pin connection between the RF Digital Control Board and the F1950EVB, see the following figure and table.

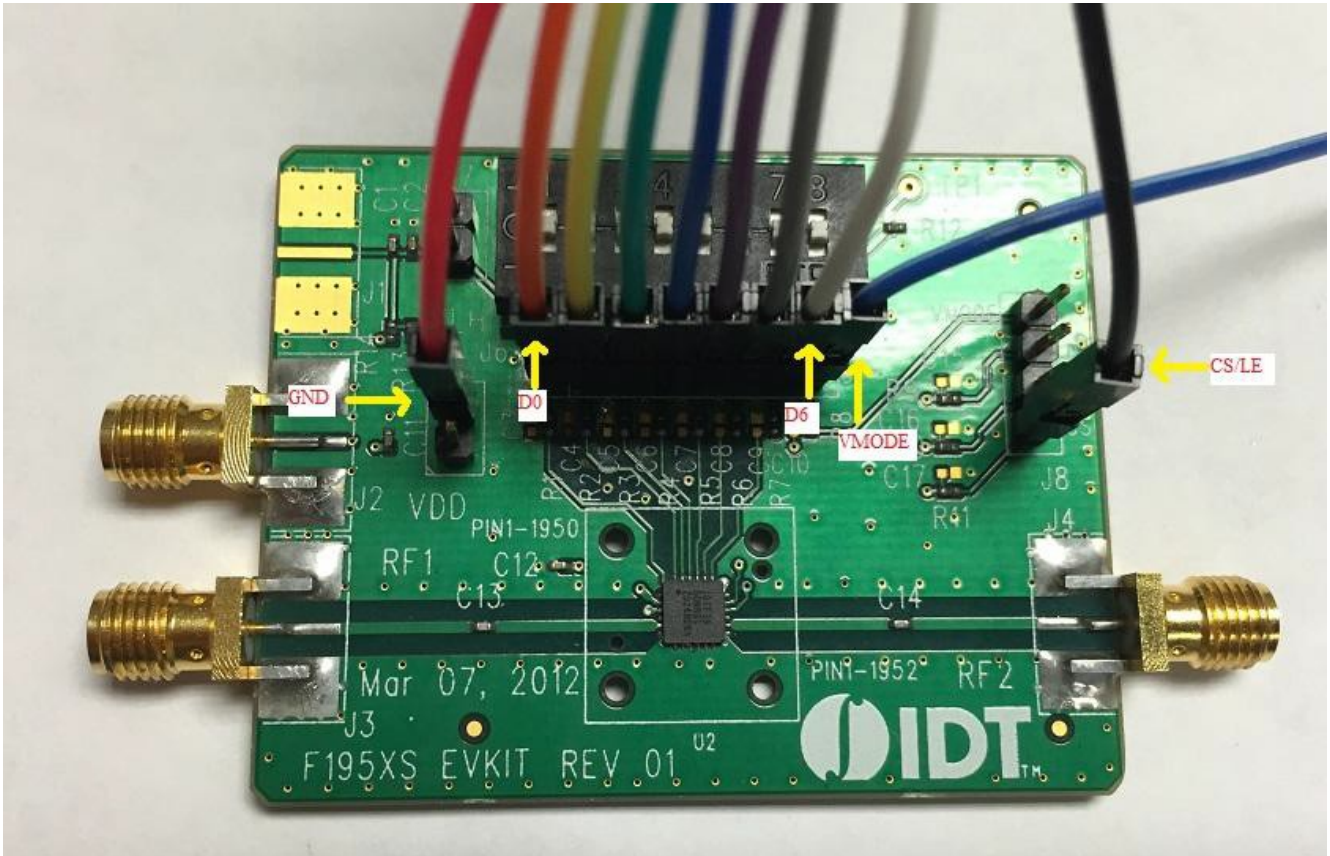


Figure 11. Parallel Mode Pin Connection for F1950EVB

Table 3. Parallel Mode Pin Connection for F1950EVB

RF Digital Control Board	Wire Color	F1950EVB Board Pin	RF Digital Control Board	Wire Color	F1950EVB Board Pin
C9			5V	BROWN	
C8			GND	RED	GND
C7			D0	ORANGE	D0
C6			D1	YELLOW	D1
C5			D2	GREEN	D2
C4			D3	BLUE	D3
C3			D4	PURPLE	D4
C2			D5	GREY	D5
C1			D6	WHITE	D6
C0	Single Wire	VMODE	D7	BLACK	CS/LE

6.3 F1951EVB

6.3.1. Serial Control Mode

Users should connect a supply voltage between 3V to 5V to VDD of the F1951EVB. For the correct serial pin connection between the RF Digital Control Board and the F1951EVB, see the following figure and table.

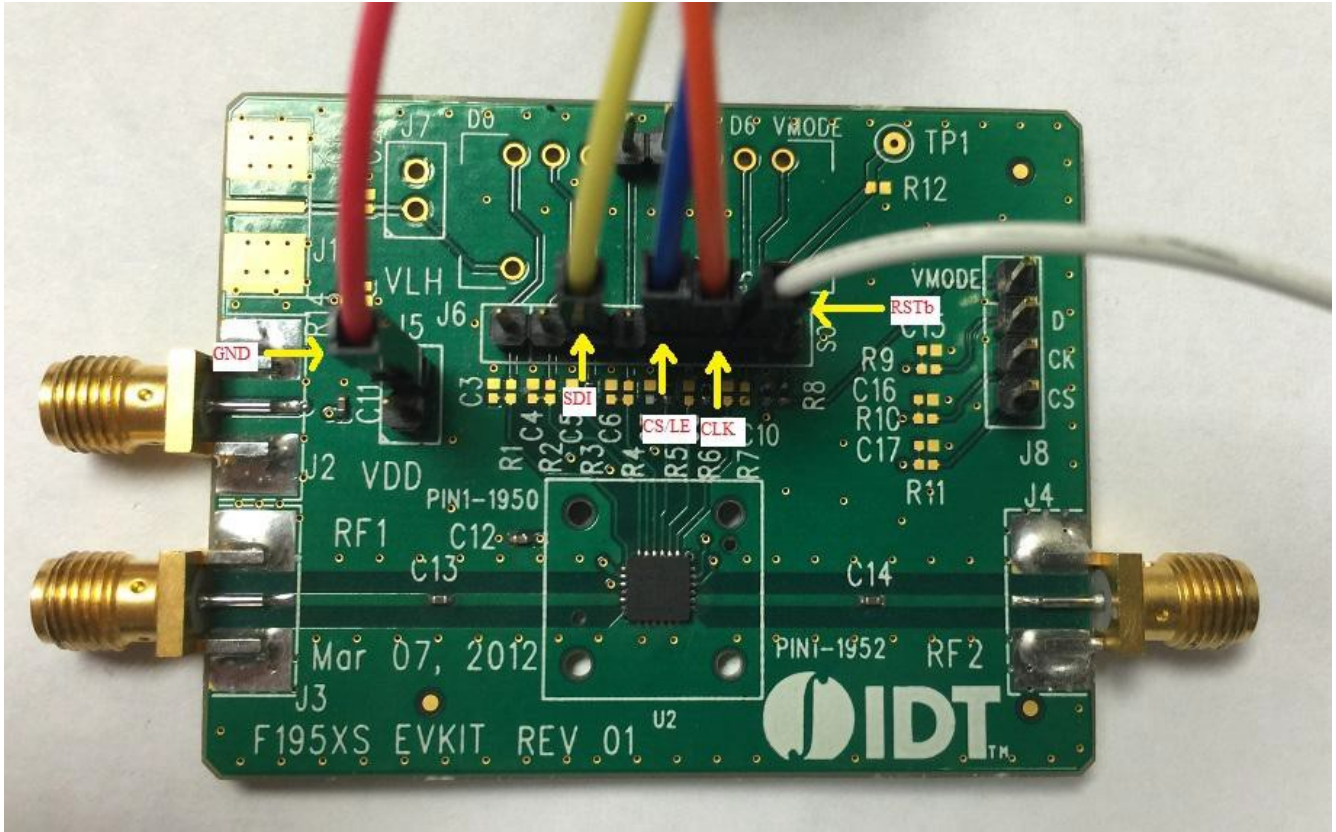


Figure 12. Serial Mode Pin Connection for F1951EVB

Table 4. Serial Mode Pin Connection for F1951EVB

RF Digital Control Board	Wire Color	F1951EVB Board Pin	RF Digital Control Board	Wire Color	F1951EVB Board Pin
C9			5V	BROWN	
C8			GND	RED	GND
C7			D0	ORANGE	CLK
C6			D1	YELLOW	SDI
C5			D2	GREEN	
C4			D3	BLUE	CS/LE
C3			D4	PURPLE	
C2			D5	GREY	
C1			D6	WHITE	
C0	Single Wire	RSTb	D7	BLACK	

6.4 F1953EVB

6.4.1. Serial Control Mode

Users should connect a supply the voltage between 2.7V to 3.3V to VDD of the F1953EVB. For correct serial pin connection between the RF Digital Control Board and the F1953EVB, see the following figure and table.

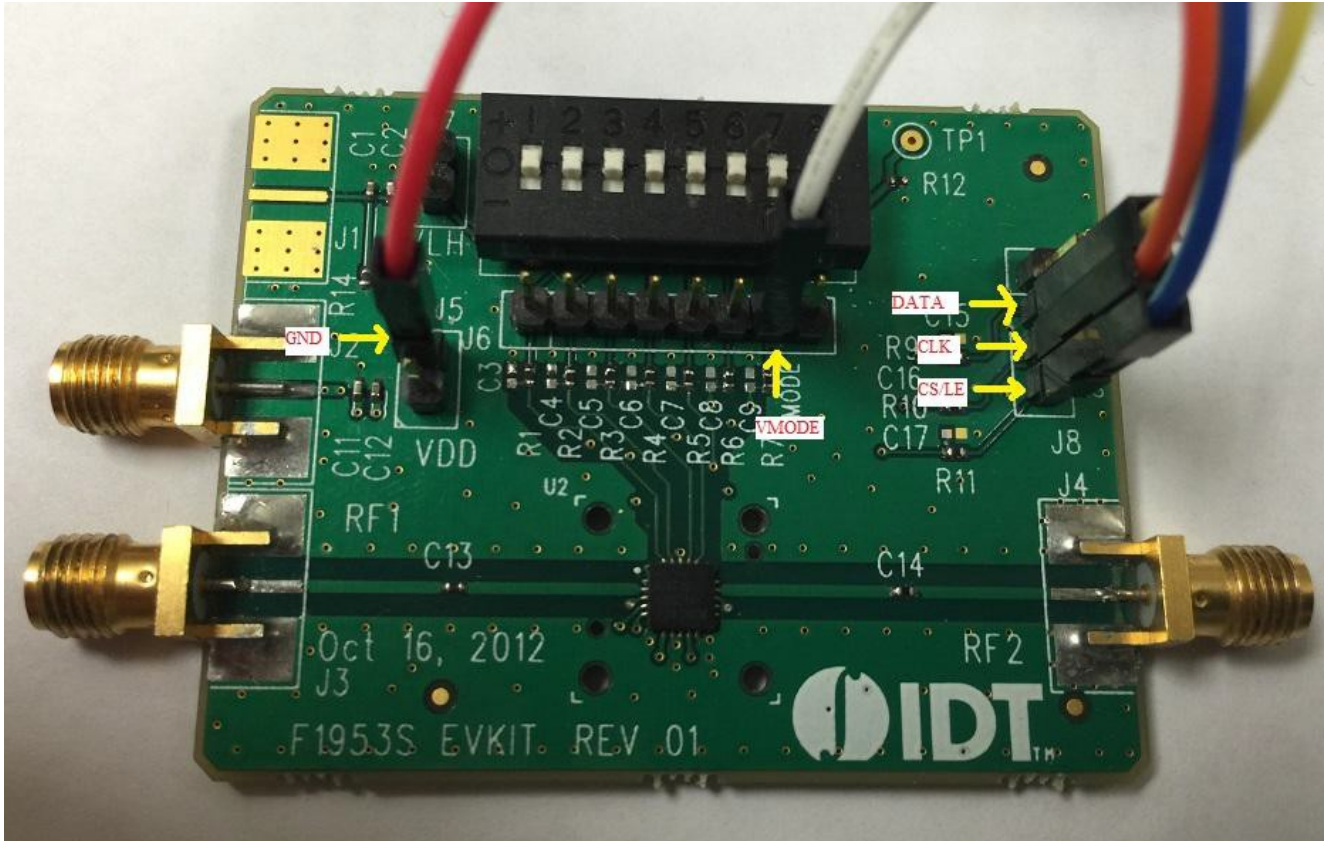


Figure 13. Serial Mode Pin Connection for F1953EVB

Table 5. Serial Mode Pin Connection for F1953EVB

RF Digital Control Board	Wire Color	F1953EVB Board Pin	RF Digital Control Board	Wire Color	F1953EVB Board Pin
C9			5V	BROWN	
C8			GND	RED	GND
C7			D0	ORANGE	CLK
C6			D1	YELLOW	DATA
C5			D2	GREEN	
C4			D3	BLUE	CS/LE
C3			D4	PURPLE	
C2			D5	GREY	
C1			D6	WHITE	
C0	Single Wire	VMODE	D7	BLACK	

6.4.2. Parallel Control Mode

For parallel control mode users need to run the “EPROG” application to program the CBUS pin of the RF Digital Control Board. The supply voltage for the VDD should be between 2.7V to 3.3V. For the correct direct/latched parallel pin connection between the RF Digital Control Board and the F1953EVB, see the following figure and table.

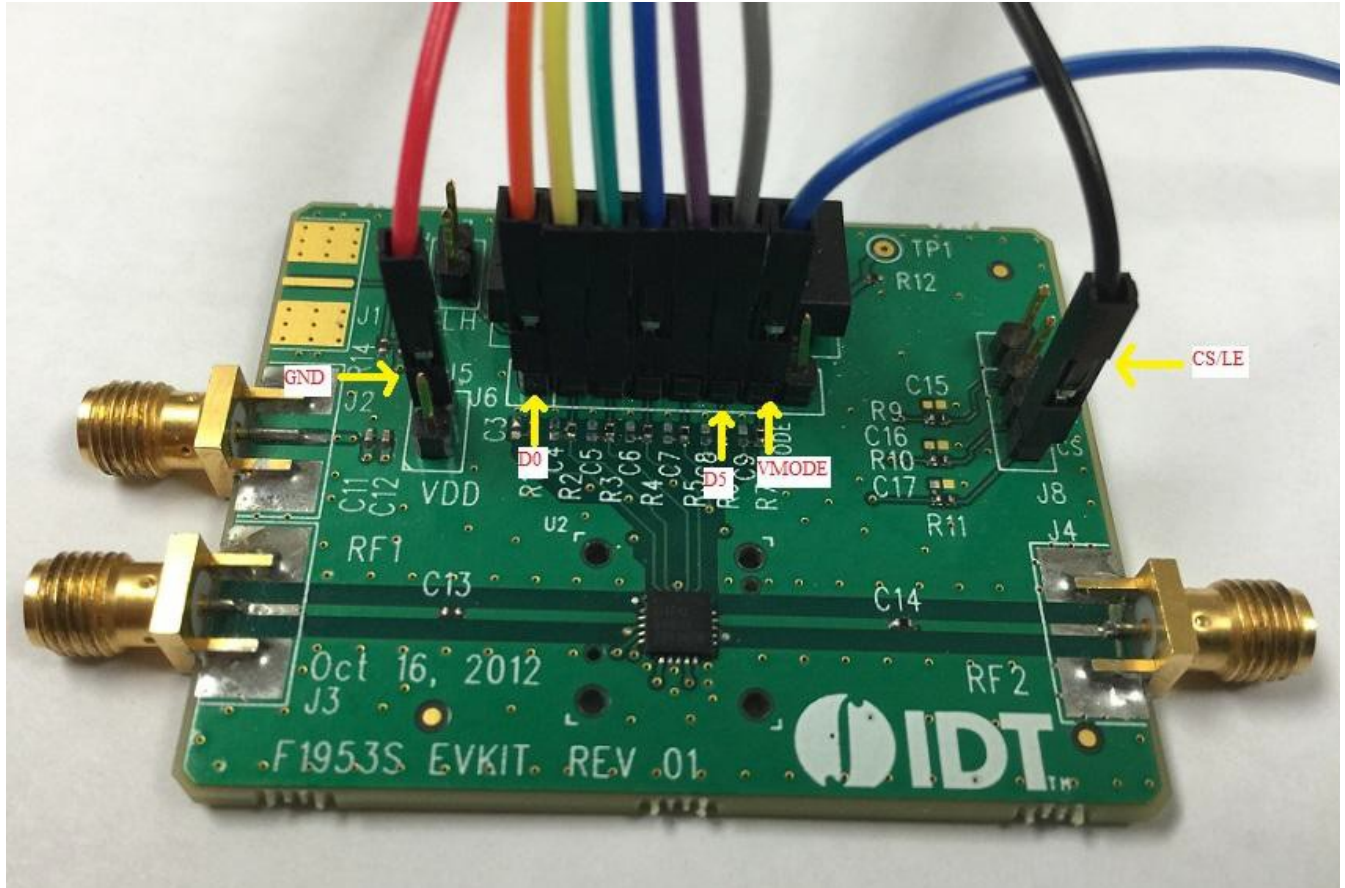


Figure 14. Parallel Mode Pin connection for F1953EVB

Table 6. Parallel Mode Pin Connection for F1953EVB

RF Digital Control Board	Wire Color	F1953EVB Board Pin	RF Digital Control Board	Wire Color	F1953EVB Board Pin
C9			5V	BROWN	
C8			GND	RED	GND
C7			D0	ORANGE	D0
C6			D1	YELLOW	D1
C5			D2	GREEN	D2
C4			D3	BLUE	D3
C3			D4	PURPLE	D4
C2			D5	GREY	D5
C1			D6	WHITE	
C0	Single Wire	VMODE	D7	BLACK	CS/LE

6.5 F1956EVB

6.5.1. Serial Control Mode

Users should connect a supply the voltage between 3.0V to 5.0V to VDD of the F1956EVB. Also supply 5V to VDD (J10 on the F1956EVB) to provide voltage to 10 pin DIP Switches for serial address word control. For correct serial pin connection between the RF Digital Control Board and the F1956EVB, see the following figure and table.

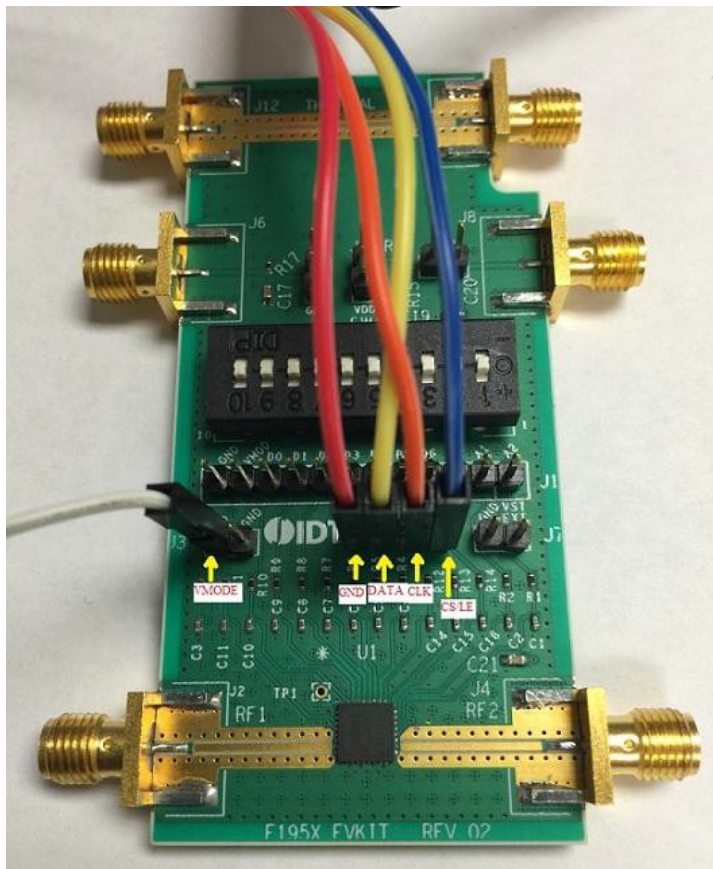


Figure 15. Serial Mode Pin Connection for F1956EVB

Table 7. Serial Mode Pin Connection for F1956EVB

RF Digital Control Board	Wire Color	F1956EVB Board Pin	RF Digital Control Board	Wire Color	F1956EVB Board Pin
C9			5V	BROWN	
C8			GND	RED	GND
C7			D0	ORANGE	CLK
C6			D1	YELLOW	DATA
C5			D2	GREEN	
C4			D3	BLUE	CS/LE
C3			D4	PURPLE	
C2			D5	GREY	
C1			D6	WHITE	
C0	Single Wire	VMODE	D7	BLACK	

6.5.2. Parallel Control Mode

For parallel control mode users need to run the “EPROG” application to program the CBUS pin of the RF Digital Control Board. The supply for the VDD should be between 3.0V to 5.0V. For correct direct/latched parallel pin connection between the RF Digital Control Board and the F1956EVB, see the following figure and table.

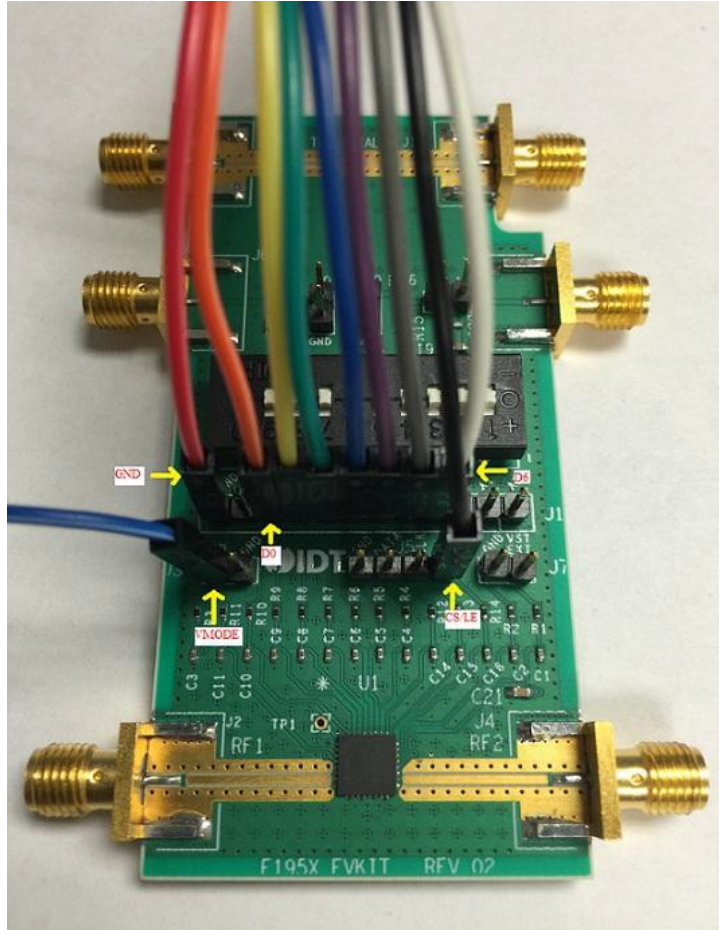


Figure 16. Parallel Mode Pin Connection for F1956EVB

Table 8. Parallel Mode Pin Connection for F1956EVB

RF Digital Control Board	Wire Color	F1956EVB Board Pin	RF Digital Control Board	Wire Color	F1956EVB Board Pin
C9			5V	BROWN	
C8			GND	RED	GND
C7			D0	ORANGE	D0
C6			D1	YELLOW	D1
C5			D2	GREEN	D2
C4			D3	BLUE	D3
C3			D4	PURPLE	D4
C2			D5	GREY	D5
C1			D6	WHITE	D6
C0	Single Wire	VMODE	D7	BLACK	CS/LE

6.6 F1912EVB

6.6.1. Serial Control Mode

Users should connect a supply voltage between 3.0 V to 5.25 V to VDD of the F1912EVB. For correct serial pin connection between the RF Digital Control Board and the F1912EVB, see the following figure and table.

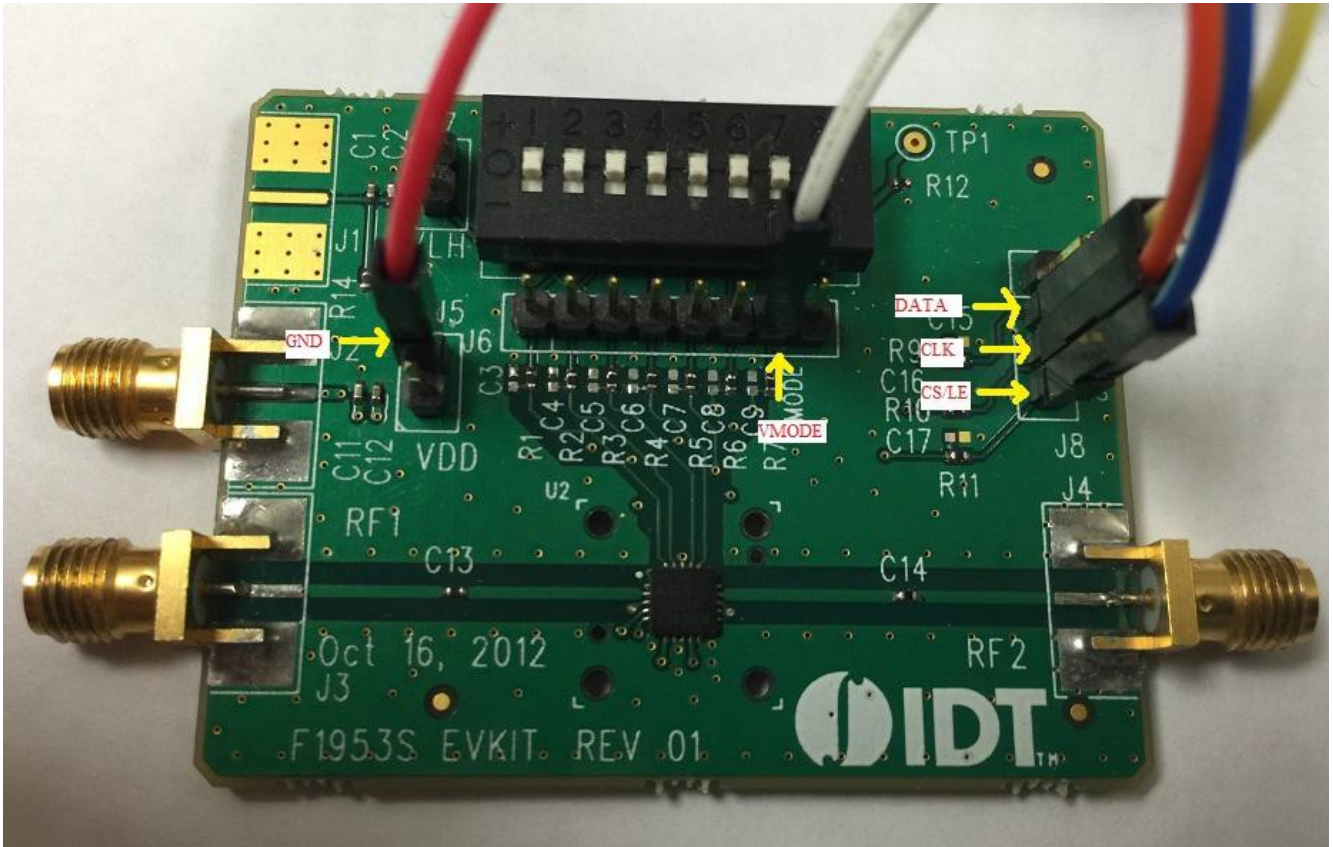


Figure 17. Serial mode pin connection for F1912EVB

Table 9. Serial Mode Pin Connection for F1912EVB

RF Digital Control Board	Wire Color	F1912EVB Board Pin	RF Digital Control Board	Wire Color	F1912EVB Board Pin
C9			5V	BROWN	
C8			GND	RED	GND
C7			D0	ORANGE	CLK
C6			D1	YELLOW	DATA
C5			D2	GREEN	
C4			D3	BLUE	CS/LE
C3			D4	PURPLE	
C2			D5	GREY	
C1			D6	WHITE	
C0	Single Wire	VMODE	D7	BLACK	

6.6.2. Parallel Control Mode

For parallel control mode users need to run the “EPROG” application to program the CBUS pin of the RF Digital Control Board. The supply voltage for the VDD should be between 3.0V to 5.25V. For correct direct/latched parallel pin connection between the RF Digital Control Board and the F1912EVB, see the following figure and table.

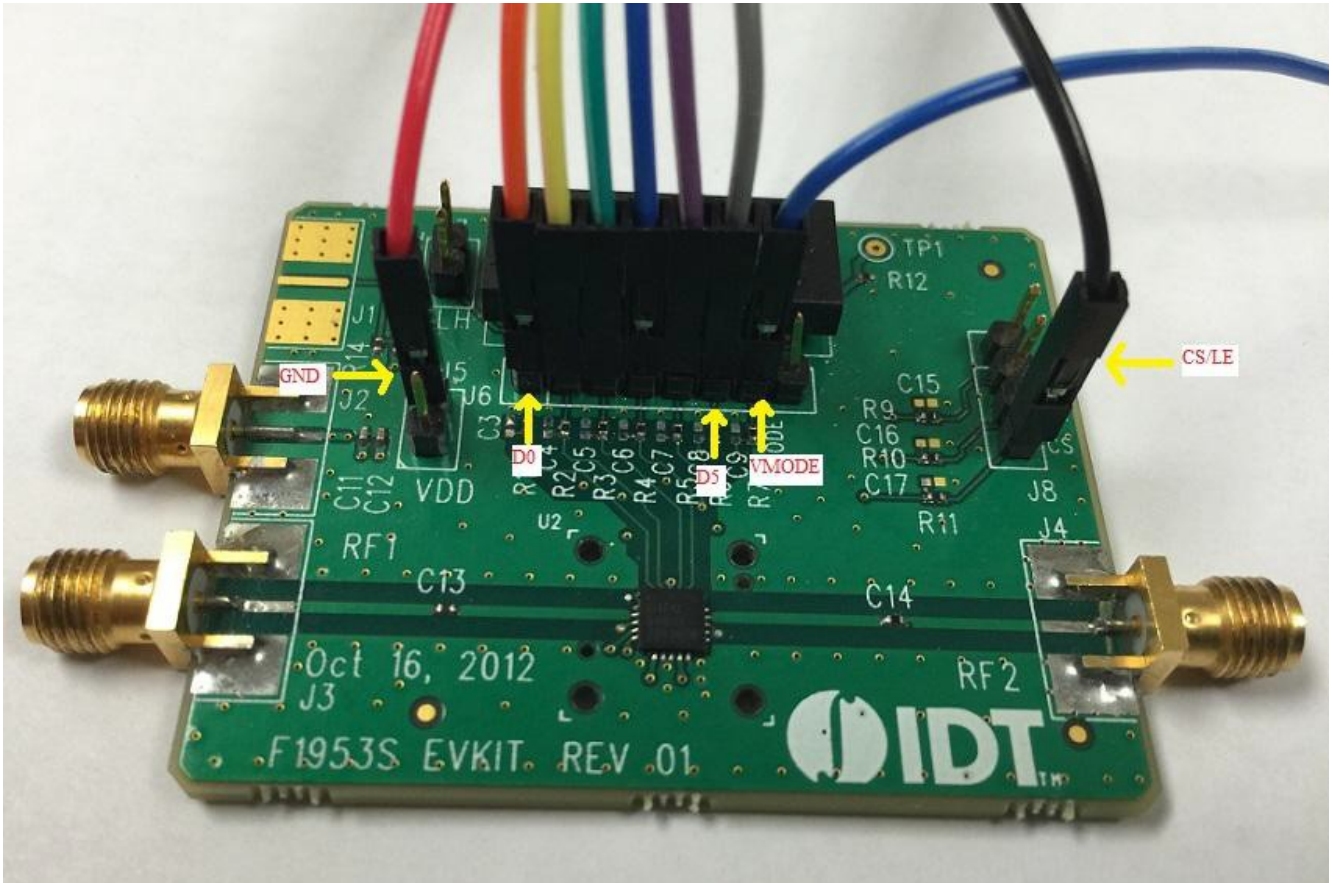


Figure 18. Parallel Mode Pin Connection for F1912EVB

Table 10. Parallel Mode Pin Connection for F1912EVB

RF Digital Control Board	Wire Color	F1912EVB Board Pin	RF Digital Control Board	Wire Color	F1912EVB Board Pin
C9			5V	BROWN	
C8			GND	RED	GND
C7			D0	ORANGE	D0
C6			D1	YELLOW	D1
C5			D2	GREEN	D2
C4			D3	BLUE	D3
C3			D4	PURPLE	D4
C2			D5	GREY	D5
C1			D6	WHITE	
C0	Single Wire	VMODE	D7	BLACK	CS/LE

6.7 F1975EVB

6.7.1. Serial Mode

Users should connect a supply the voltage between 3.0V to 5.25V to VDD of the F1975EVB. For correct serial pin connection between the RF Digital Control Board and the F1975EVB, see the following figure and table.

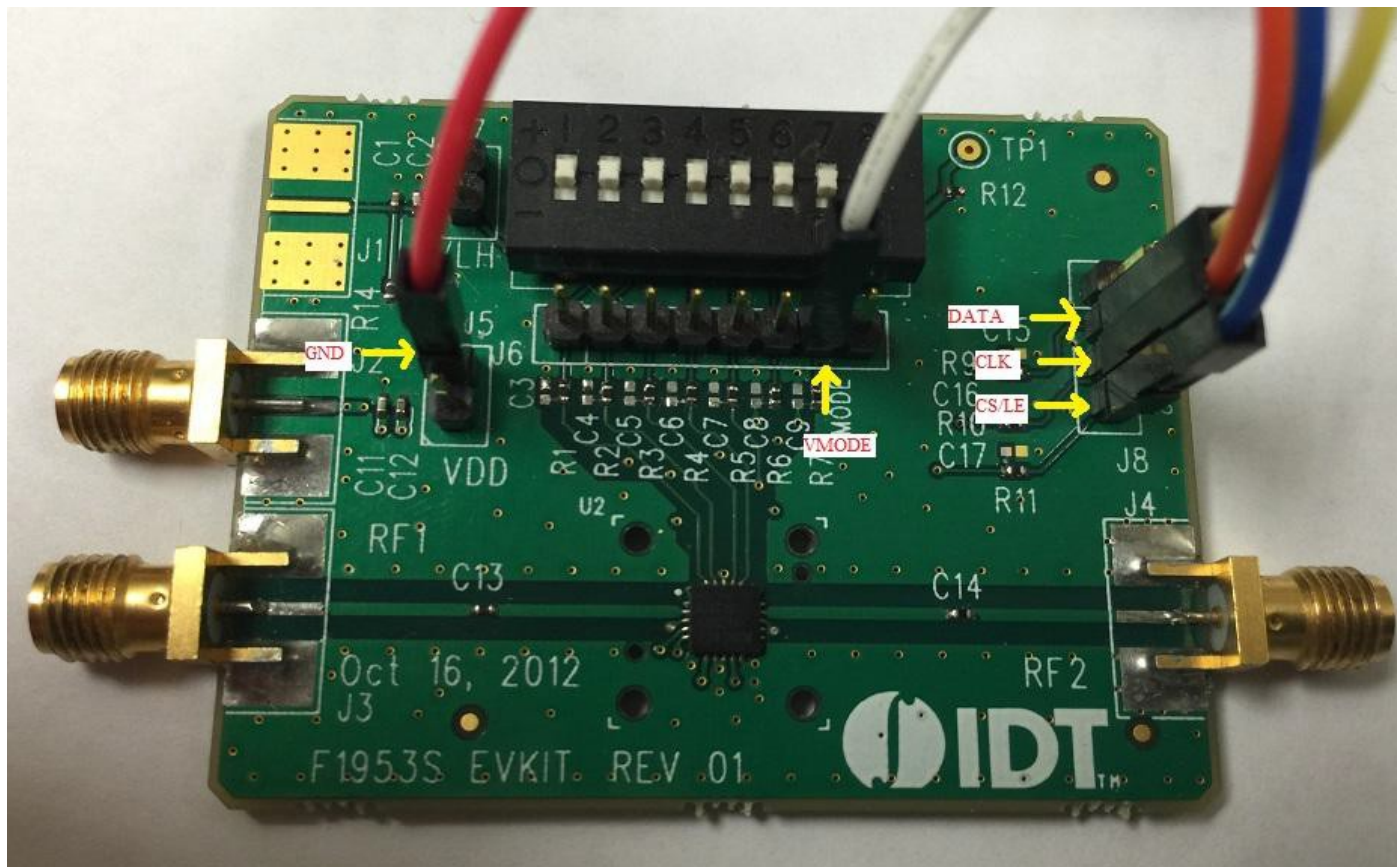


Figure 19. Serial Mode Pin Connection for F1975EVB

Table 11. Serial Mode Pin Connection for F1975EVB

RF Digital Control Board	Wire Color	F1975EVB Board Pin	RF Digital Control Board	Wire Color	F1975EVB Board Pin
C9			5V	BROWN	
C8			GND	RED	GND
C7			D0	ORANGE	CLK
C6			D1	YELLOW	DATA
C5			D2	GREEN	
C4			D3	BLUE	CS/LE
C3			D4	PURPLE	
C2			D5	GREY	
C1			D6	WHITE	
C0	Single Wire	VMODE	D7	BLACK	

6.7.2. Parallel Mode

For parallel control mode users need to run the “EPROG” application to program the CBUS pin of the RF Digital Control Board. The supply voltage for the VDD should be between 3.0V to 5.25V. For correct direct/latched parallel pin connection between the RF Digital Control Board and the F1975EVB, see the following figure and table.

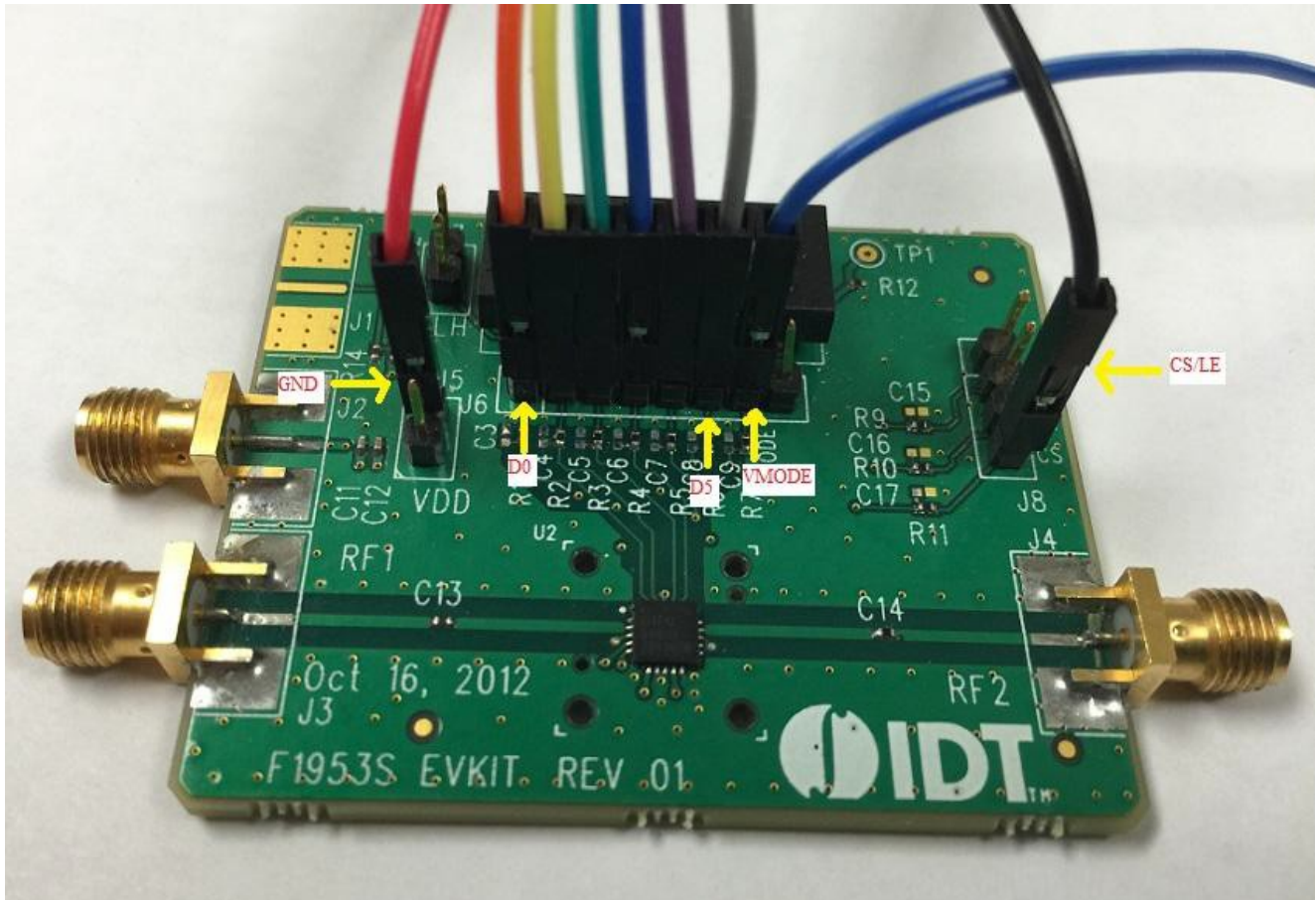


Figure 20. Parallel Mode pin connection for F1975EVB

Table 12. Parallel Mode pin connection for F1975EVB

RF Digital Control Board	Wire Color	F1975EVB Board Pin	RF Digital Control Board	Wire Color	F1975EVB Board Pin
C9			5V	BROWN	
C8			GND	RED	GND
C7			D0	ORANGE	D0
C6			D1	YELLOW	D1
C5			D2	GREEN	D2
C4			D3	BLUE	D3
C3			D4	PURPLE	D4
C2			D5	GREY	D5
C1			D6	WHITE	
C0	Single Wire	VMODE	D7	BLACK	CS/LE

6.8 F1977EVB

6.8.1. Serial Mode

Users should connect a supply the voltage between 3V to 5V to VDD of the F1977EVB. Also supply 5V to VDD (J10 on F1977EVB) to provide the voltage to 10 pin DIP Switches for serial address word control. For correct serial pin connection between the RF Digital Control Board and the F1977EVB, see the following figure and table.

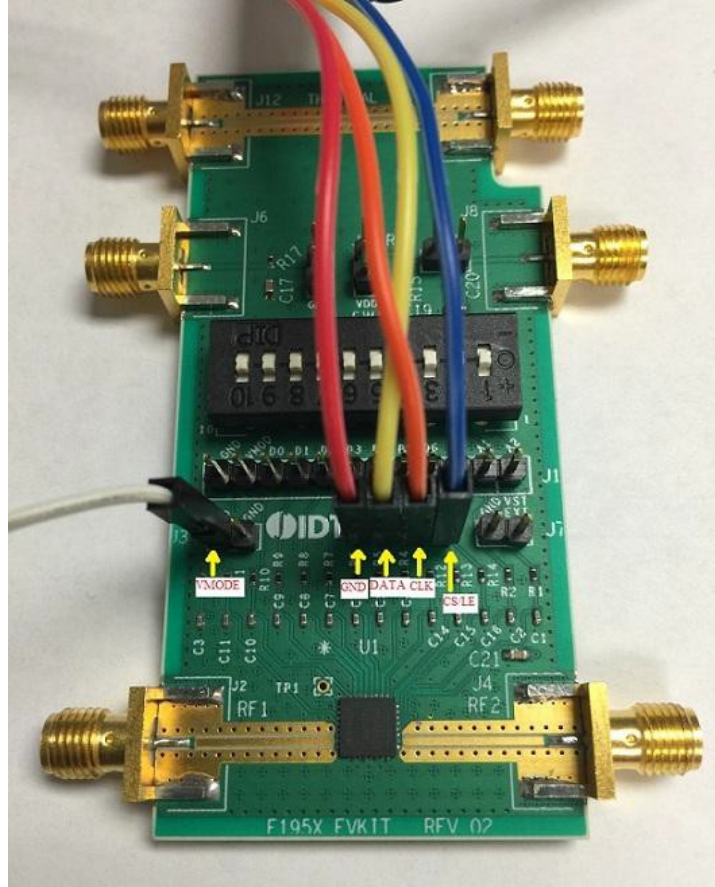


Figure 21. Serial Mode Pin Connection for F1977EVB

Table 13. Serial Mode Pin Connection for F1977EVB

RF Digital Control Board	Wire Color	F1977EVB Board Pin	RF Digital Control Board	Wire Color	F1977EVB Board Pin
C9			5V	BROWN	
C8			GND	RED	GND
C7			D0	ORANGE	CLK
C6			D1	YELLOW	DATA
C5			D2	GREEN	
C4			D3	BLUE	CS/LE
C3			D4	PURPLE	
C2			D5	GREY	
C1			D6	WHITE	
C0	Single Wire	VMODE	D7	BLACK	

6.8.2. Parallel Control Mode

For parallel control mode users need to run the “EPROG” application to program the CBUS pin of the RF Digital Control Board. The supply voltage for the VDD should be between 3.0V to 5.0 V. For correct direct/latched parallel pin connection between the RF Digital Control Board and the F1977EVB, see the following figure and table.

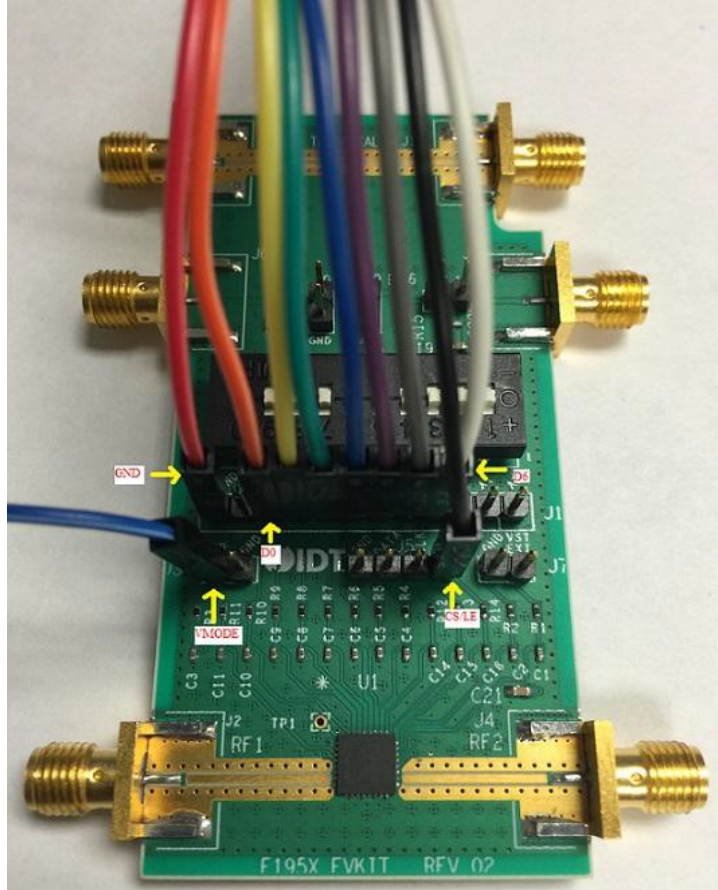


Figure 22. Parallel Mode Pin Connection for F1977EVB

Table 14. Parallel Mode Pin Connection for F1977EVB

RF Digital Control Board	Wire Color	F1977EVB Board Pin	RF Digital Control Board	Wire Color	F1977EVB Board Pin
C9			5V	BROWN	
C8			GND	RED	GND
C7			D0	ORANGE	D0
C6			D1	YELLOW	D1
C5			D2	GREEN	D2
C4			D3	BLUE	D3
C3			D4	PURPLE	D4
C2			D5	GREY	D5
C1			D6	WHITE	D6
C0	Single Wire	VMODE	D7	BLACK	CS/LE

6.9 F1200EVB

6.9.1. Serial Mode

Users should connect a supply voltage between 4.75V to 5.25V to VDD of the F1200EVB. For correct serial pin connection between the RF Digital Control Board and the F1200EVB, see the following figure and table. Make sure VMODE pin is left open for serial mode.

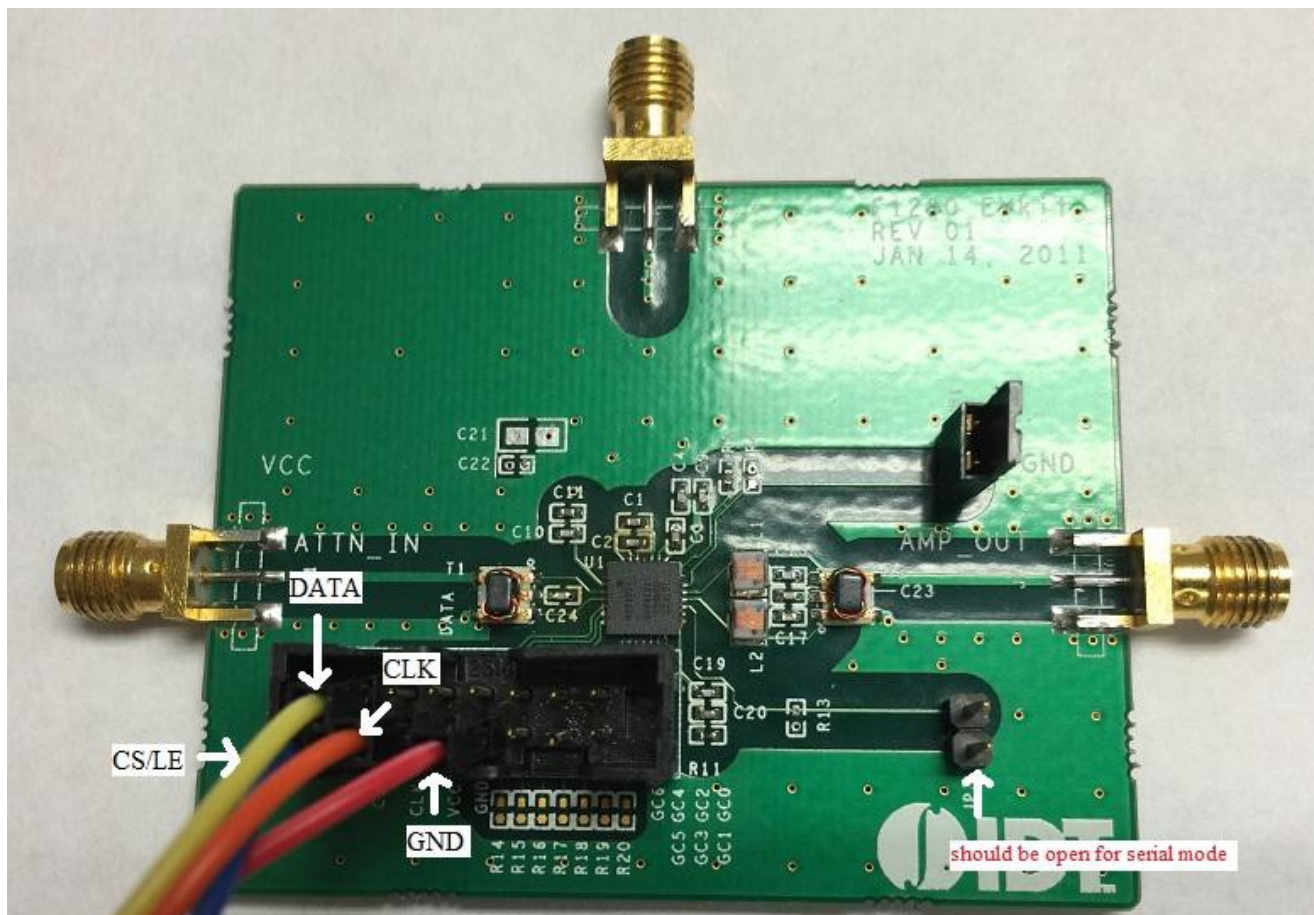


Figure 23. Serial Mode Pin Connection for F1200EVB

Table 15. Serial Mode Pin Connection for F1200EVB

RF Digital Control Board	Wire Color	F1200EVB Board Pin	RF Digital Control Board	Wire Color	F1200EVB Board Pin
C9			5V	BROWN	
C8			GND	RED	GND
C7			D0	ORANGE	CLK
C6			D1	YELLOW	DATA
C5			D2	GREEN	
C4			D3	BLUE	CS/LE
C3			D4	PURPLE	
C2			D5	GREY	
C1			D6	WHITE	
C0			D7	BLACK	

6.9.2. Parallel Mode

Users should connect a supply voltage between 4.75V to 5.25V to VDD of the F1200EVB. For correct parallel pin connection between the RF Digital Control Board and the F1200EVB, see the following figure and table. VMODE pin should be closed for parallel mode.

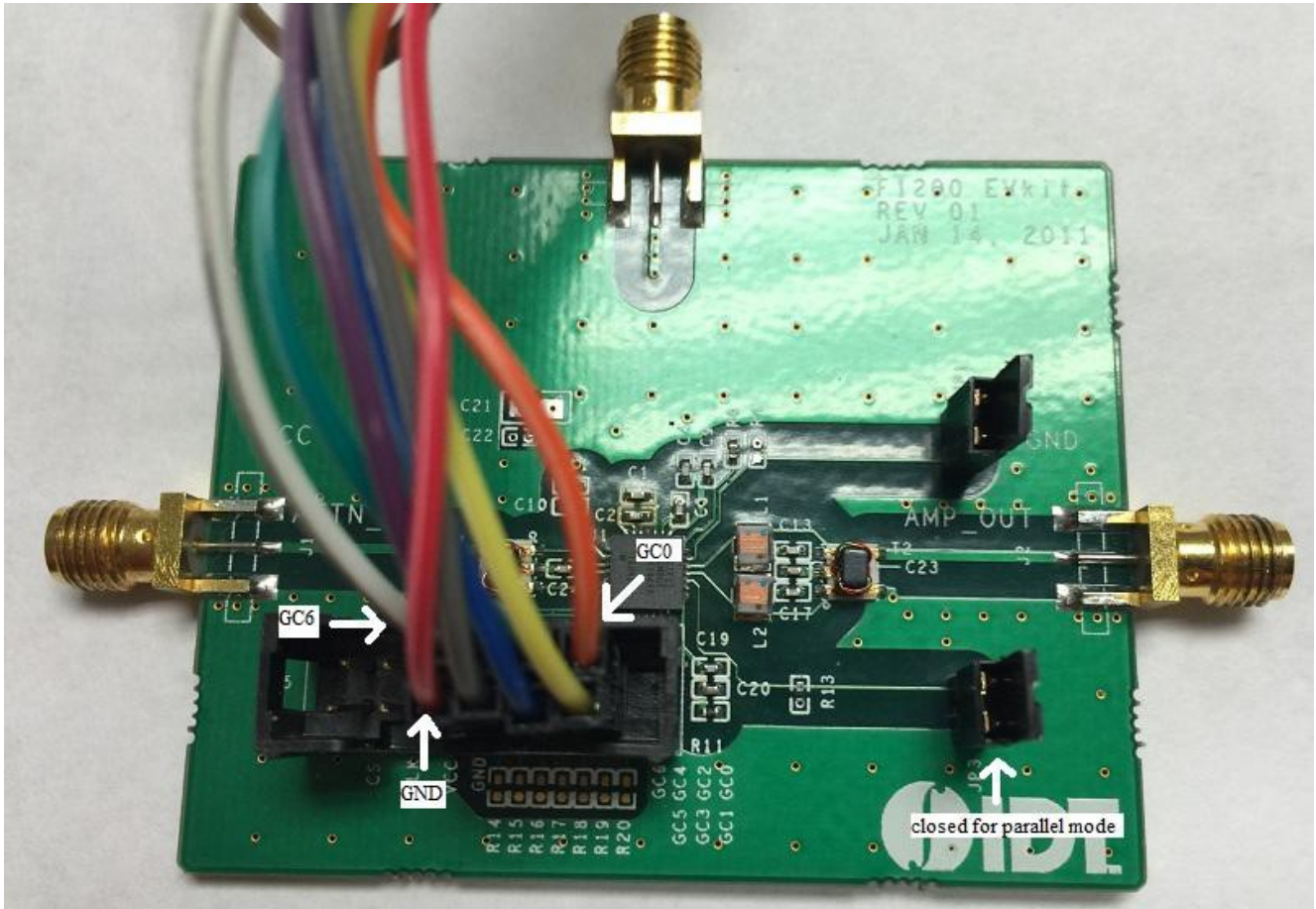


Figure 24. Parallel Mode Pin Connection for F1200EVB

Table 16. Parallel Mode Pin Connection for F1200EVB

RF Digital Control Board	Wire Color	F1200EVB Board Pin	RF Digital Control Board	Wire Color	F1200EVB Board Pin
C9			5V	BROWN	
C8			GND	RED	GND
C7			D0	ORANGE	GC0
C6			D1	YELLOW	GC1
C5			D2	GREEN	GC2
C4			D3	BLUE	GC3
C3			D4	PURPLE	GC4
C2			D5	GREY	GC5
C1			D6	WHITE	GC6
C0			D7	BLACK	

6.10 F1240EVB

6.10.1. Serial Mode

Users should connect a supply voltage between 4.75V to 5.25V to VDD of the F1240EVB. For correct serial pin connection between the RF Digital Control Board and the F1240EVB, see the following figure and table. Connect VMODE to ground for serial mode.

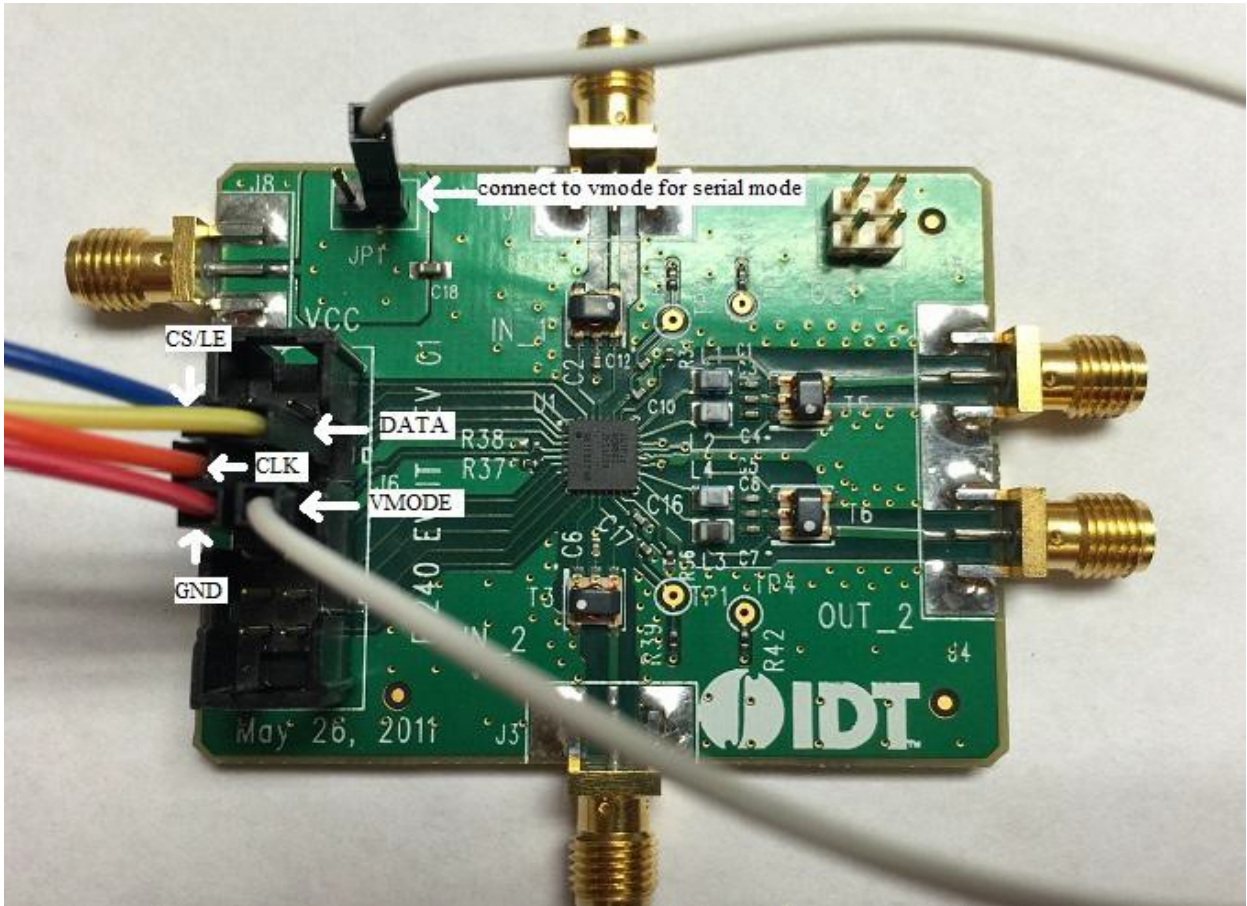


Figure 25. Serial Mode Pin Connection for F1240EVB

Table 17. Serial Mode Pin Connection for F1240EVB

RF Digital Control Board	Wire Color	F1240EVB Board Pin	RF Digital Control Board	Wire Color	F1240EVB Board Pin
C9			5V	BROWN	
C8			GND	RED	GND
C7			D0	ORANGE	CLK
C6			D1	YELLOW	DATA
C5			D2	GREEN	
C4			D3	BLUE	CS/LE
C3			D4	PURPLE	
C2			D5	GREY	
C1			D6	WHITE	
C0			D7	BLACK	

6.10.2. Parallel Mode

Users should connect a supply voltage between 4.75V to 5.25V to VDD of the F1240EVB. For correct parallel pin connection between the RF Digital Control Board and the F1240EVB, see the following figure and table.

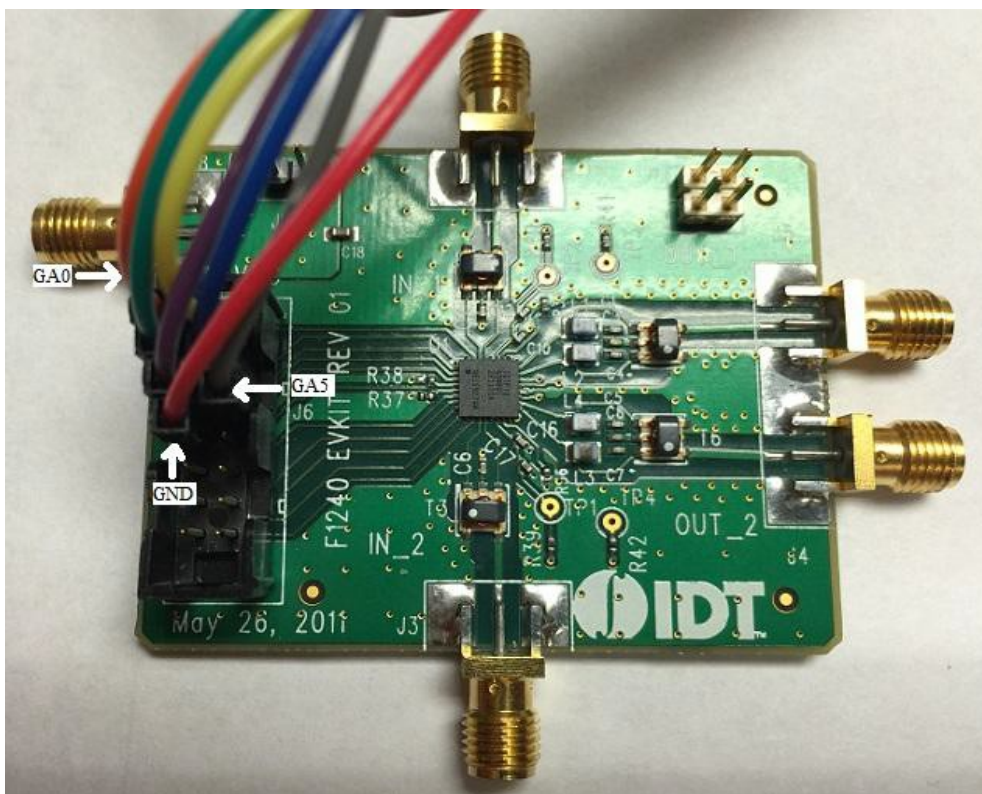


Figure 26. Parallel Mode Channel A Pin Connection for F1240EVB

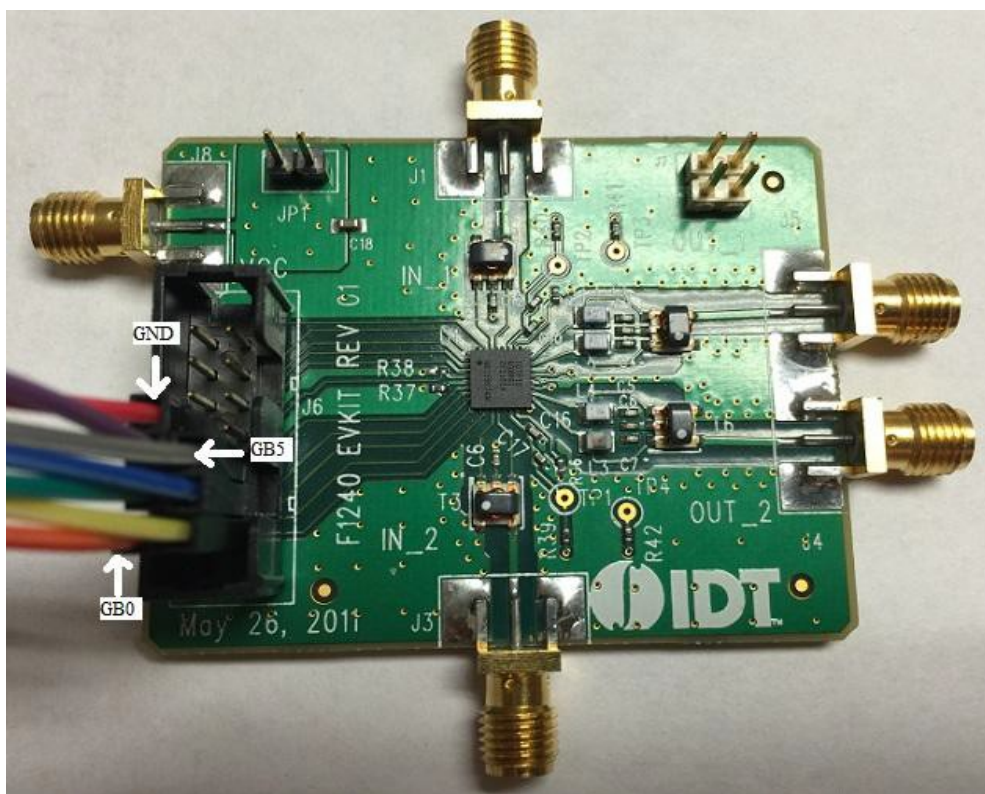


Figure 27. Parallel Mode Channel B Pin Connection for F1240EVB

Table 18. Parallel Mode Pin Connection for F1240EVB

RF Digital Control Board	Wire Color	F1240EVB Board Pin	RF Digital Control Board	Wire Color	F1240EVB Board Pin
C9			5V	BROWN	
C8			GND	RED	GND
C7			D0	ORANGE	GA0/GB0
C6			D1	YELLOW	GA1/GB1
C5			D2	GREEN	GA2/GB2
C4			D3	BLUE	GA3/GB3
C3			D4	PURPLE	GA4/GB4
C2			D5	GREY	GA5/GB5
C1			D6	WHITE	
C0			D7	BLACK	

6.11 F1241EVB

6.11.1. Parallel Mode

Users should connect a supply voltage between 4.75V to 5.25V to VDD of the F1241EVB. For correct parallel pin connection between the RF Digital Control Board and the F1241EVB, see the following figure and table.

Figure 28. Parallel Mode Channel A Pin Connection for F1241EVB



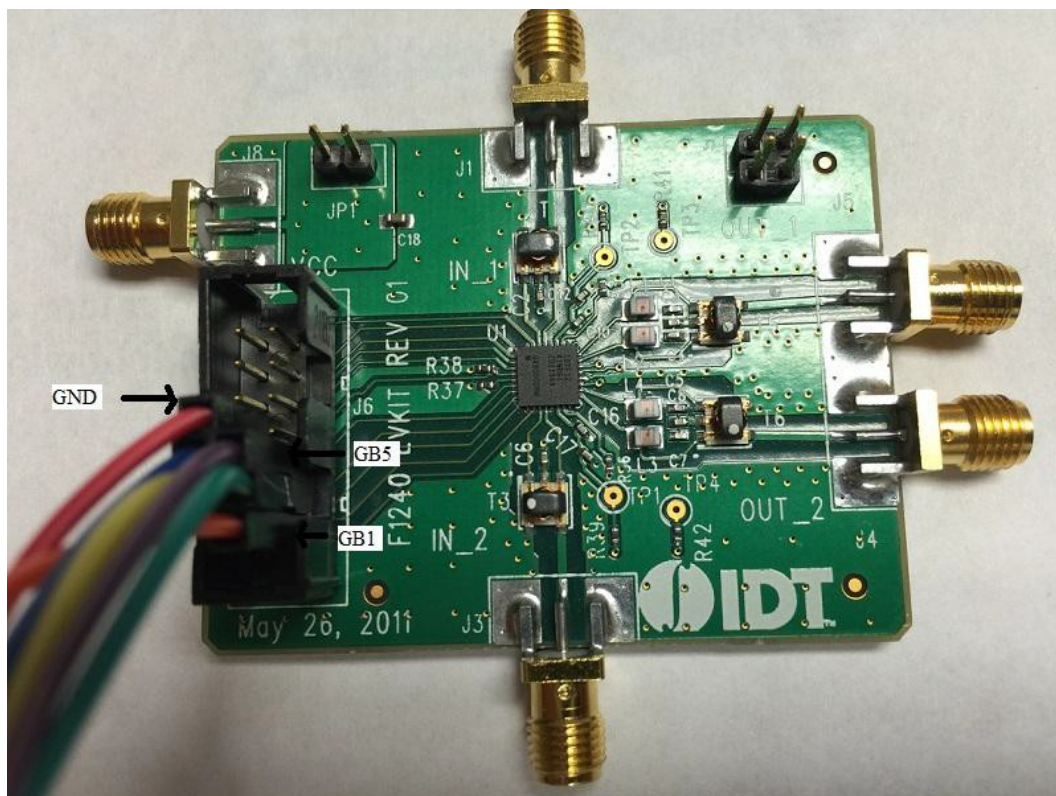


Figure 29. Parallel Mode Channel B Pin Connection for F1241EVB

Table 19. Parallel Mode Pin Connection for F1241EVB

RF Digital Control Board	Wire Color	F1241EVB Board Pin	RF Digital Control Board	Wire Color	F1241EVB Board Pin
C9			5V	BROWN	
C8			GND	RED	GND
C7			D0	ORANGE	GA1/GB1
C6			D1	YELLOW	GA2/GB2
C5			D2	GREEN	GA3/GB3
C4			D3	BLUE	GA4/GB4
C3			D4	PURPLE	GA5/GB5
C2			D5	GREY	
C1			D6	WHITE	
C0			D7	BLACK	

6.12 F0480EVB

6.12.1. Serial Mode

Users should connect a supply voltage between 4.75V to 5.25V to VDD of the F0480EVB. For correct serial pin connection between the RF Digital Control Board and the F0480EVB, see the following figure and table.

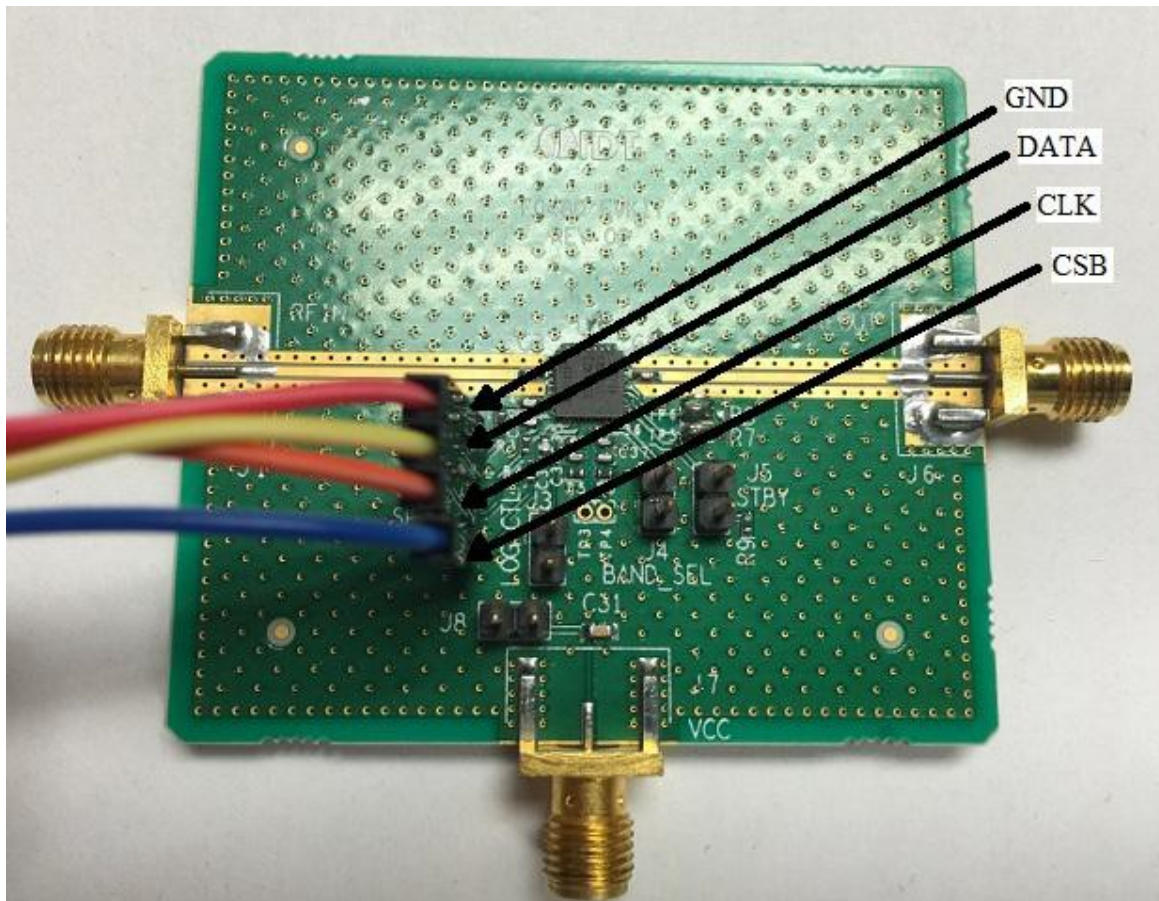


Figure 30. Serial Mode Pin Connection for F0480EVB

Table 20. Serial Mode Pin Connection for F0480EVB

RF Digital Control Board	Wire Color	F0480EVB Board Pin	RF Digital Control Board	Wire Color	F0480EVB Board Pin
C9			5V	BROWN	
C8			GND	RED	GND
C7			D0	ORANGE	CLK
C6			D1	YELLOW	DATA
C5			D2	GREEN	
C4			D3	BLUE	CSb
C3			D4	PURPLE	
C2			D5	GREY	
C1			D6	WHITE	
C0			D7	BLACK	

6.13 Device Configuration

Once the installation is complete and the cable connection is made, plug your Adafruit's RF Digital Control Board to your computer via the USB cable. Open **Device Manager**, via the Control Panel to check that the USB serial port is correctly installed. The following figure shows the Device Manager window.

Note: If the RF Digital Control Board is not connected and the user tries to run the RF Digital Control Software, a pop-up box will be displayed asking to find the library for the device driver.

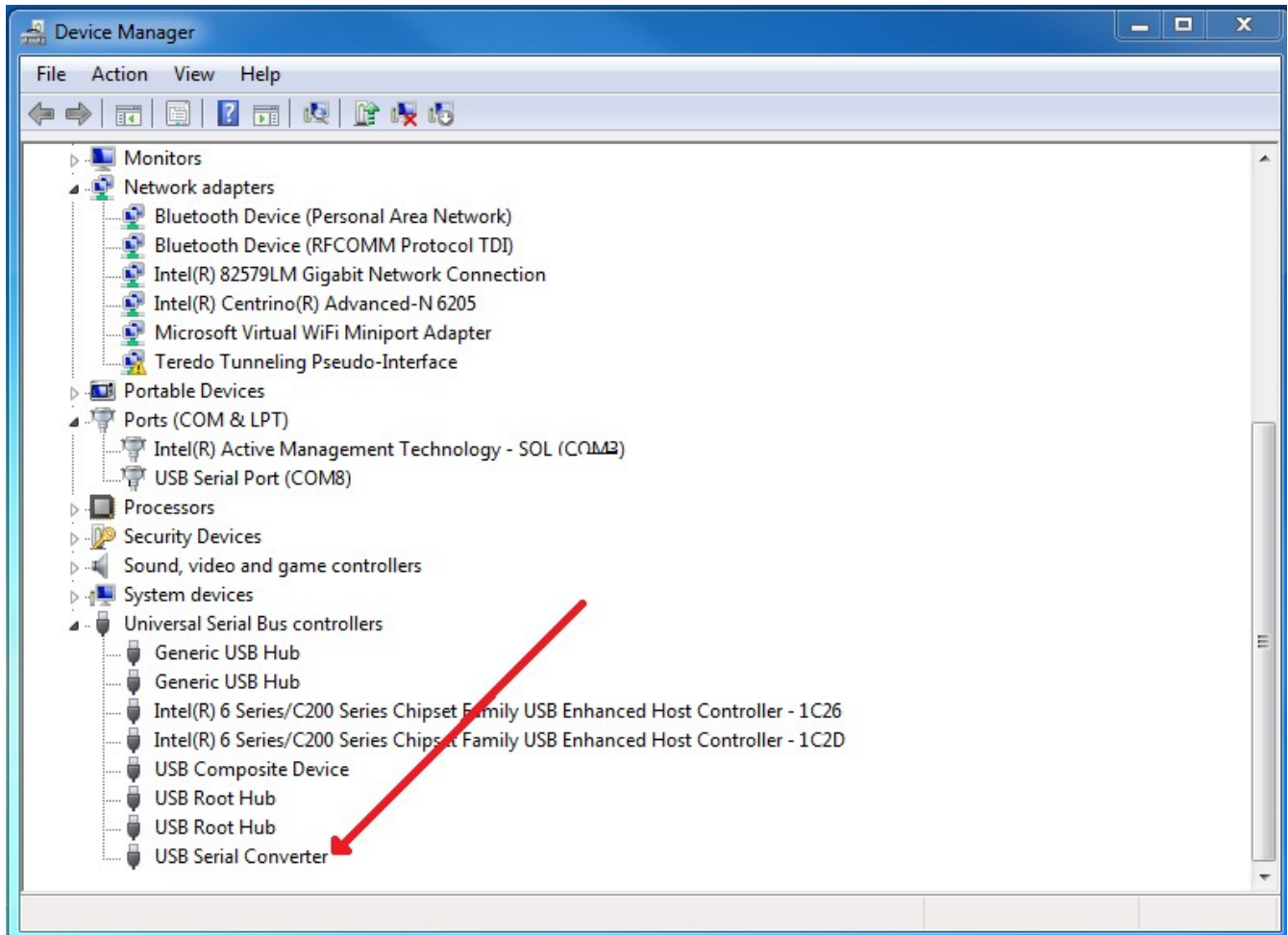


Figure 31. USB Serial Device Correctly Installed

7. Software Application

7.1 Software Installation

Once the installation is complete, the Software application shortcut will be placed on the user's desktop.

7.2 Software Interface

The RF Digital Control Software controls the Product EV_{KIT} in both serial, direct parallel, and parallel latched mode.

Note: The pop-up box appears notifying that “RF Digital Control Board not found” if user tries to run the RF Digital Control Software without connecting the RF Digital Control Board.

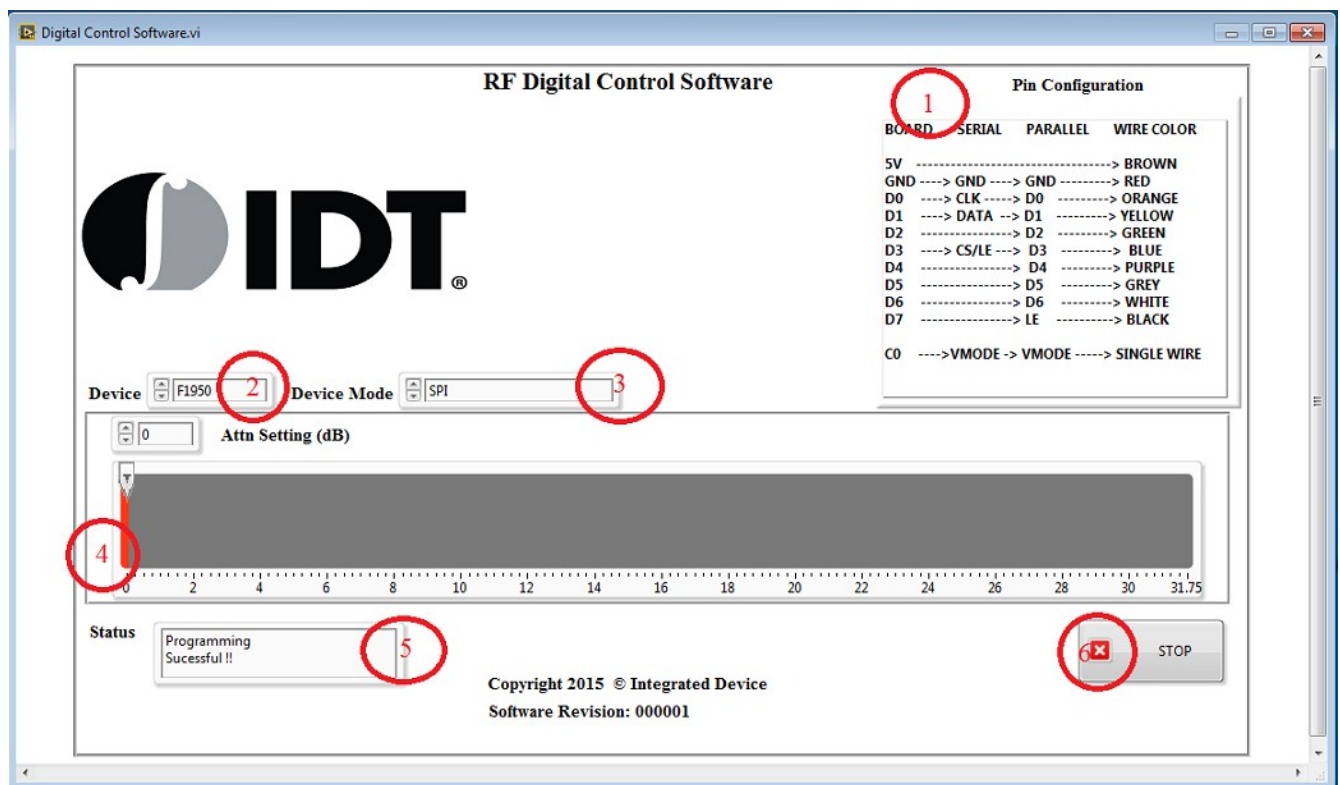


Figure 32. Software Application

7.2.1. Pin Configuration

This application works for both serial and parallel interfaces. Please refer to the pin configuration in Figure 32, Number 1, for the correct connection from the RF Digital Control Board to Renesas' Product EV_{KIT}. Latch Enable pins are different for different modes of communication.

7.2.2. Device

Choose the device you would like to test using the RF Digital Control Software Application.

7.2.3. Device Mode

The user can choose one of the three modes of communication for the device (Figure 32, Number 3). Please refer to the device datasheet for supported modes of communication. Modes of operation that are not supported by Digital Control Application/device are automatically disabled.

7.2.4. Attenuation Setting

The user can set the desired attenuation using this control. The attenuation step and maximum attenuation are different for each device

7.2.5. Status

Any status or error messages are displayed in this box (Figure 32, Number 5).

7.2.6. Stop

The user can stop the application using the STOP button (Figure 32, Number 6).

7.2.7. Address

The Address control button is not present in Figure 32. It is only visible when the F1956EVB and F1977EVB are selected.

7.2.8. Channel B

The Channel B control is not present in Figure 32. It is only visible when the F1240EVB is selected. The light on this indicator indicates that channel B is selected.

7.3 Parallel Control Option

Please note that the RF Digital Control Software application will not support parallel mode without running executable "EPROG" which is located in the folder named "parallel_option".

7.4 EEPROG

The executable application “EEPORG” programs the CBUS pin of the RF Digital Control Board chip for direct/latched parallel mode. Please note that the user must run this application only one time. Once the application programs the RF Digital Control Board chip, product EVB or EV_{KIT} can be controlled using direct parallel and parallel latched mode. The steps for opening the EEPORG application are provided below.

Right click on the “parallel_option” folder then click open. The following figure shows the location of the “parallel_option” folder.

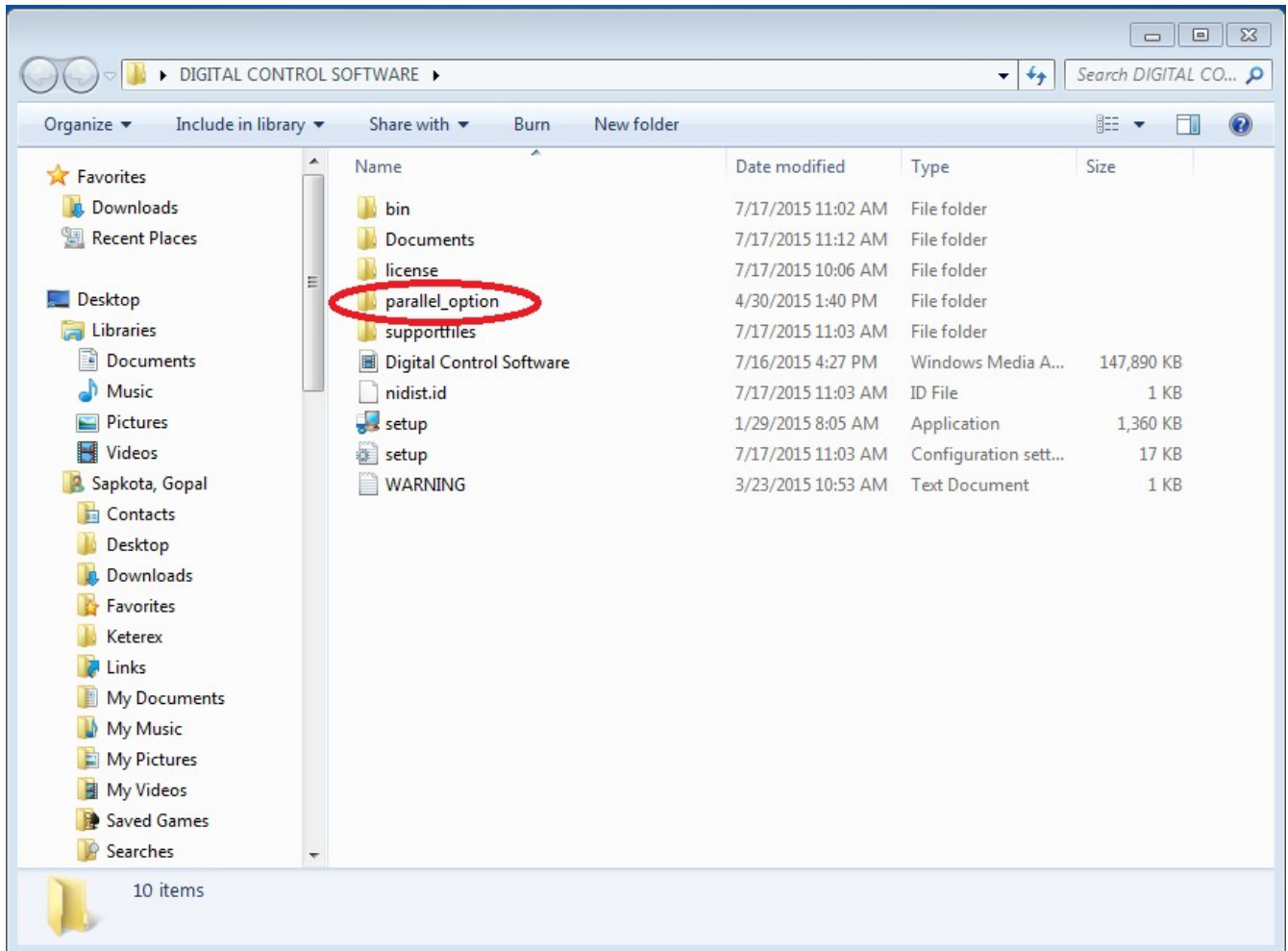


Figure 33. Location of the “parallel_option” Folder

Right-click on the “EPROG.exe” file then click open. Figure 34 shows the location of the “EPROG.exe” file.

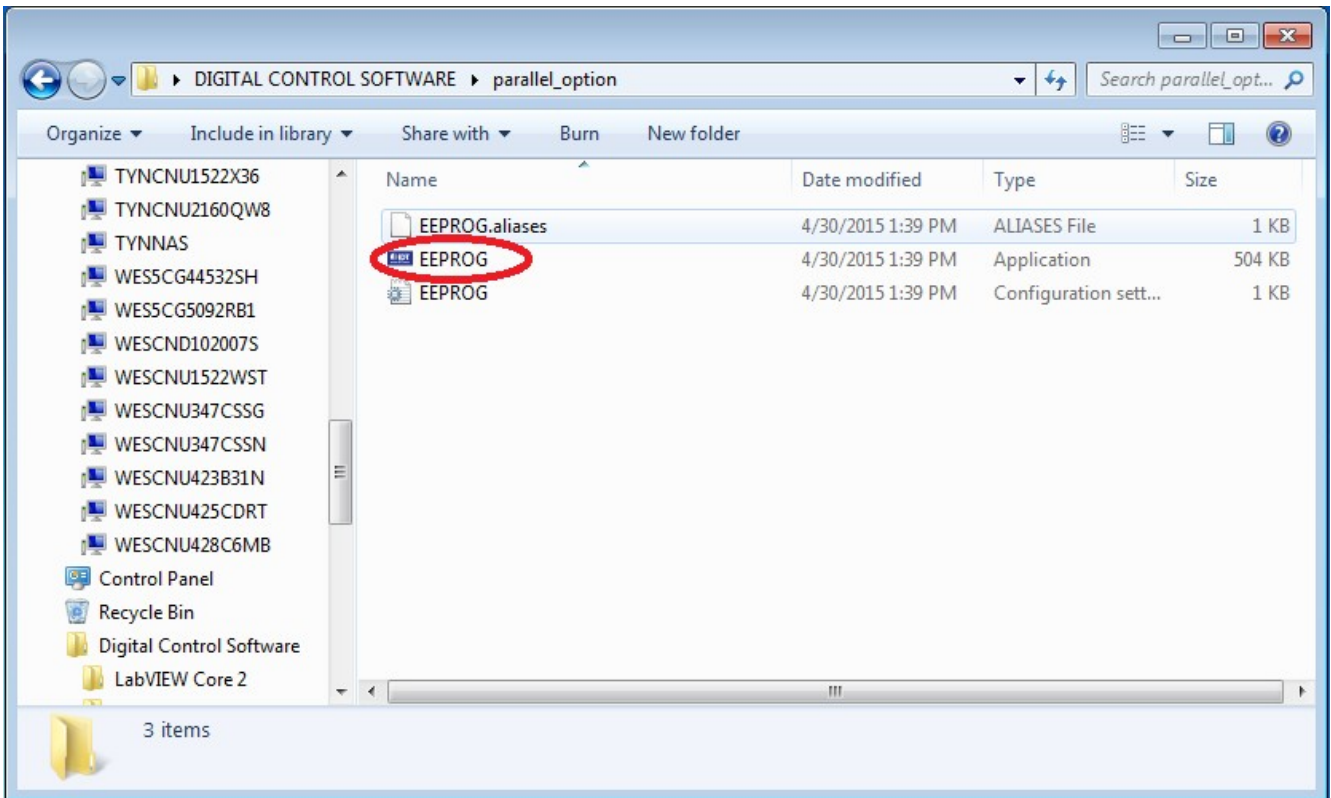


Figure 34. EPROG Application Location

Figure 35 shows the EPROG application interface that needs to be run so that parallel mode can be used.

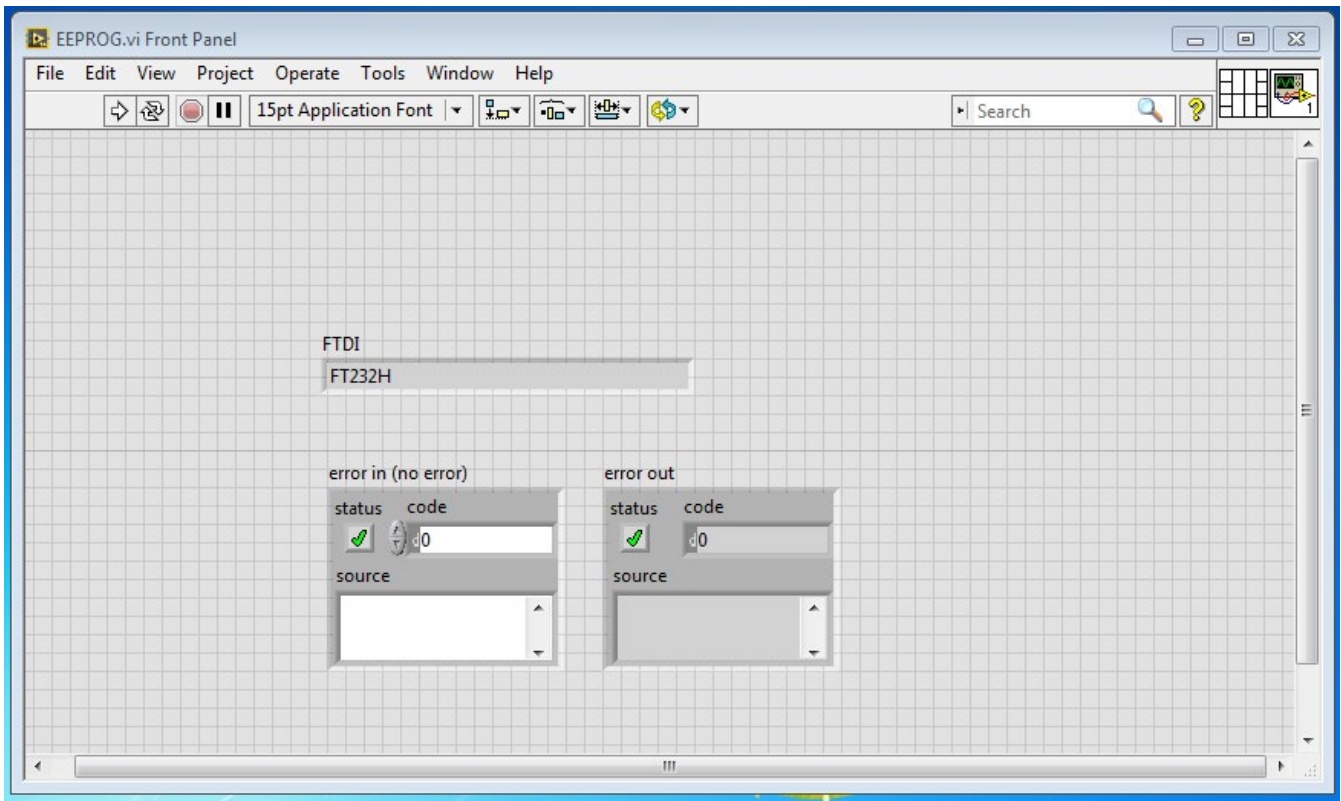


Figure 35. EPROG Application for Direct/Latched Parallel Mode

8. Test Environment

The application has been known to work on a "HP EliteBook 2560p" running "Windows 7 Professional".

9. Supported Devices

Table 21. Supported Devices

Product	Product Family	Comment	Support Date
F1950EVB	Digital Step Attenuator	Requires cable for connection	August 2015
F1951EVB	Digital Step Attenuator	Requires cable for connection	August 2015
F1953EVB	Digital Step Attenuator	Requires cable for connection	August 2015
F1956EVB	Digital Step Attenuator	Requires cable for connection	August 2015
F1912EVB	Digital Step Attenuator	Requires cable for connection	August 2015
F1975EVB	Digital Step Attenuator	Requires cable for connection	August 2015
F1977EVB	Digital Step Attenuator	Requires cable for connection	August 2015
F1200EVB	Variable Gain Amplifier	Requires cable for connection	August 2015
F1240EVB	Variable Gain Amplifier	Requires cable for connection	August 2015
F1241EVB	Variable Gain Amplifier	Requires cable for connection	August 2015
F0480EVB	Variable Gain Amplifier	Requires cable for connection	August 2015

10. Revision History

Revision	Date	Description
1.00	Sep 15, 2023	<ul style="list-style-type: none"> ▪ Updated numerous pictures of the RF Digital Board used to control the Evaluation Software. ▪ Completed minor changes throughout
-	Aug 31, 2015	Initial release.

IMPORTANT NOTICE AND DISCLAIMER

RENESAS ELECTRONICS CORPORATION AND ITS SUBSIDIARIES (“RENESAS”) PROVIDES TECHNICAL SPECIFICATIONS AND RELIABILITY DATA (INCLUDING DATASHEETS), DESIGN RESOURCES (INCLUDING REFERENCE DESIGNS), APPLICATION OR OTHER DESIGN ADVICE, WEB TOOLS, SAFETY INFORMATION, AND OTHER RESOURCES “AS IS” AND WITH ALL FAULTS, AND DISCLAIMS ALL WARRANTIES, EXPRESS OR IMPLIED, INCLUDING, WITHOUT LIMITATION, ANY IMPLIED WARRANTIES OF MERCHANTABILITY, FITNESS FOR A PARTICULAR PURPOSE, OR NON-INFRINGEMENT OF THIRD-PARTY INTELLECTUAL PROPERTY RIGHTS.

These resources are intended for developers who are designing with Renesas products. You are solely responsible for (1) selecting the appropriate products for your application, (2) designing, validating, and testing your application, and (3) ensuring your application meets applicable standards, and any other safety, security, or other requirements. These resources are subject to change without notice. Renesas grants you permission to use these resources only to develop an application that uses Renesas products. Other reproduction or use of these resources is strictly prohibited. No license is granted to any other Renesas intellectual property or to any third-party intellectual property. Renesas disclaims responsibility for, and you will fully indemnify Renesas and its representatives against, any claims, damages, costs, losses, or liabilities arising from your use of these resources. Renesas' products are provided only subject to Renesas' Terms and Conditions of Sale or other applicable terms agreed to in writing. No use of any Renesas resources expands or otherwise alters any applicable warranties or warranty disclaimers for these products.

(Disclaimer Rev.1.01)

Corporate Headquarters

TOYOSU FORESIA, 3-2-24 Toyosu,
Koto-ku, Tokyo 135-0061, Japan
www.renesas.com

Trademarks

Renesas and the Renesas logo are trademarks of Renesas Electronics Corporation. All trademarks and registered trademarks are the property of their respective owners.

Contact Information

For further information on a product, technology, the most up-to-date version of a document, or your nearest sales office, please visit www.renesas.com/contact-us/.