

# Floating License Server V2.04.00

User's Manual

Target Device

RL78 Family

RX Family

RH850 Family

All information contained in these materials, including products and product specifications, represents information on the product at the time of publication and is subject to change by Renesas Electronics Corp. without notice. Please review the latest information published by Renesas Electronics Corp. through various means, including the Renesas Electronics Corp. website (<http://www.renesas.com>).

## Notice

1. Descriptions of circuits, software and other related information in this document are provided only to illustrate the operation of semiconductor products and application examples. You are fully responsible for the incorporation or any other use of the circuits, software, and information in the design of your product or system. Renesas Electronics disclaims any and all liability for any losses and damages incurred by you or third parties arising from the use of these circuits, software, or information.
  2. Renesas Electronics hereby expressly disclaims any warranties against and liability for infringement or any other claims involving patents, copyrights, or other intellectual property rights of third parties, by or arising from the use of Renesas Electronics products or technical information described in this document, including but not limited to, the product data, drawings, charts, programs, algorithms, and application examples.
  3. No license, express, implied or otherwise, is granted hereby under any patents, copyrights or other intellectual property rights of Renesas Electronics or others.
  4. You shall not alter, modify, copy, or reverse engineer any Renesas Electronics product, whether in whole or in part. Renesas Electronics disclaims any and all liability for any losses or damages incurred by you or third parties arising from such alteration, modification, copying or reverse engineering.
  5. Renesas Electronics products are classified according to the following two quality grades: "Standard" and "High Quality". The intended applications for each Renesas Electronics product depends on the product's quality grade, as indicated below.
    - "Standard": Computers; office equipment; communications equipment; test and measurement equipment; audio and visual equipment; home electronic appliances; machine tools; personal electronic equipment; industrial robots; etc.
    - "High Quality": Transportation equipment (automobiles, trains, ships, etc.); traffic control (traffic lights); large-scale communication equipment; key financial terminal systems; safety control equipment; etc.
- Unless expressly designated as a high reliability product or a product for harsh environments in a Renesas Electronics data sheet or other Renesas Electronics document, Renesas Electronics products are not intended or authorized for use in products or systems that may pose a direct threat to human life or bodily injury (artificial life support devices or systems; surgical implantations; etc.), or may cause serious property damage (space system; undersea repeaters; nuclear power control systems; aircraft control systems; key plant systems; military equipment; etc.). Renesas Electronics disclaims any and all liability for any damages or losses incurred by you or any third parties arising from the use of any Renesas Electronics product that is inconsistent with any Renesas Electronics data sheet, user's manual or other Renesas Electronics document.
6. When using Renesas Electronics products, refer to the latest product information (data sheets, user's manuals, application notes, "General Notes for Handling and Using Semiconductor Devices" in the reliability handbook, etc.), and ensure that usage conditions are within the ranges specified by Renesas Electronics with respect to maximum ratings, operating power supply voltage range, heat dissipation characteristics, installation, etc. Renesas Electronics disclaims any and all liability for any malfunctions, failure or accident arising out of the use of Renesas Electronics products outside of such specified ranges.
  7. Although Renesas Electronics endeavors to improve the quality and reliability of Renesas Electronics products, semiconductor products have specific characteristics, such as the occurrence of failure at a certain rate and malfunctions under certain use conditions. Unless designated as a high reliability product or a product for harsh environments in a Renesas Electronics data sheet or other Renesas Electronics document, Renesas Electronics products are not subject to radiation resistance design. You are responsible for implementing safety measures to guard against the possibility of bodily injury, injury or damage caused by fire, and/or danger to the public in the event of a failure or malfunction of Renesas Electronics products, such as safety design for hardware and software, including but not limited to redundancy, fire control and malfunction prevention, appropriate treatment for aging degradation or any other appropriate measures. Because the evaluation of microcomputer software alone is very difficult and impractical, you are responsible for evaluating the safety of the final products or systems manufactured by you.
  8. Please contact a Renesas Electronics sales office for details as to environmental matters such as the environmental compatibility of each Renesas Electronics product. You are responsible for carefully and sufficiently investigating applicable laws and regulations that regulate the inclusion or use of controlled substances, including without limitation, the EU RoHS Directive, and using Renesas Electronics products in compliance with all these applicable laws and regulations. Renesas Electronics disclaims any and all liability for damages or losses occurring as a result of your noncompliance with applicable laws and regulations.
  9. Renesas Electronics products and technologies shall not be used for or incorporated into any products or systems whose manufacture, use, or sale is prohibited under any applicable domestic or foreign laws or regulations. You shall comply with any applicable export control laws and regulations promulgated and administered by the governments of any countries asserting jurisdiction over the parties or transactions.
  10. It is the responsibility of the buyer or distributor of Renesas Electronics products, or any other party who distributes, disposes of, or otherwise sells or transfers the product to a third party, to notify such third party in advance of the contents and conditions set forth in this document.
  11. This document shall not be reprinted, reproduced or duplicated in any form, in whole or in part, without prior written consent of Renesas Electronics.
  12. Please contact a Renesas Electronics sales office if you have any questions regarding the information contained in this document or Renesas Electronics products.

(Note1) "Renesas Electronics" as used in this document means Renesas Electronics Corporation and also includes its directly or indirectly controlled subsidiaries.

(Note2) "Renesas Electronics product(s)" means any product developed or manufactured by or for Renesas Electronics.

(Rev.4.0-1 November 2017)

## Corporate Headquarters

TOYOSU FORESIA, 3-2-24 Toyosu,  
Koto-ku, Tokyo 135-0061, Japan  
[www.renesas.com](http://www.renesas.com)

## Contact Information

For further information on a product, technology, the most up-to-date version of a document, or your nearest sales office, please visit:  
[www.renesas.com/contact/](http://www.renesas.com/contact/)

## Trademarks

Renesas and the Renesas logo are trademarks of Renesas Electronics Corporation. All trademarks and registered trademarks are the property of their respective owners.

# How to Use This Manual

This manual describes the role of the floating license for developing applications and systems for RH850 family, RX family, and RL78 family, and provides an outline of its features.

**Readers** This manual is intended for users who wish to using the IDE (CS+ or e<sup>2</sup> studio) and design software and hardware application systems.

**Purpose** This manual is intended to give users an understanding of the floating license to use for reference in developing the hardware or software of systems using these devices.

**Organization** This manual can be broadly divided into the following units.

- 1.GENERAL
- 2.FUNCTIONS
- 3.MESSAGE

**How to Read This Manual** It is assumed that the readers of this manual have general knowledge of electricity, logic circuits, and microcontrollers.

**Conventions**

Data significance:	<u>Higher</u> digits on the left and lower digits on the right
Active low representation:	XXX (overscore over pin or signal name)
Note:	Footnote for item marked with Note in the text
Caution:	Information requiring particular attention
Remarks:	Supplementary information
Numeric representation:	Decimal ... XXXX
	Hexadecimal ... 0xXXXX

# TABLE OF CONTENTS

<b>1.</b>	<b>GENERAL</b>	<b>5</b>
1.1	Introduction	5
1.2	Operating Environment	7
<b>2.</b>	<b>FUNCTIONS.</b>	<b>9</b>
2.1	Installing Floating License Server	9
2.2	Uninstalling Floating License Server	11
2.3	Using a Floating License	12
2.3.1	Setting up the server.	12
2.3.2	Setting up the firewall	16
2.3.3	Adding a license	23
2.3.4	Assigning a floating license to the client.	27
2.3.5	Confirming the license usage status.	27
2.3.6	Deleting a license	31
2.3.7	Forcibly leaving offline mode	33
2.3.8	Saving the states of floating license usage.	35
2.3.9	Change options.	38
2.4	Resetting When the Server Is Changed	39
<b>3.</b>	<b>MESSAGE</b>	<b>40</b>
3.1	Message Types	40
3.2	Internal Errors	41
3.3	Fatal Errors	41
3.4	Information	45
3.5	Choices	47
3.6	Warning	48
	Revision Record	C - 1

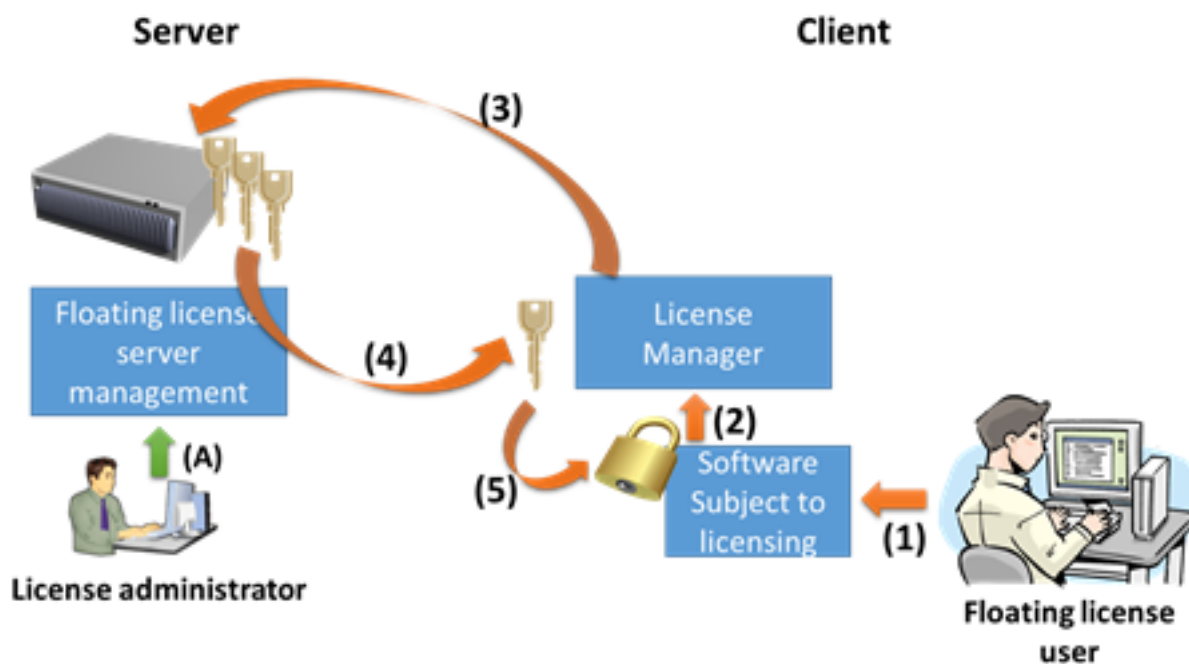
# 1. GENERAL

This chapter describes the outline of the license in the form of a floating license for managing the license of development environment for developing applications and systems for the microcontrollers (RH850, RX and RL78).

## 1.1 Introduction

A floating license is a form of license where a limited number of licenses for software are managed through a server and any computer connected to the server can use the software within a set number of licenses.

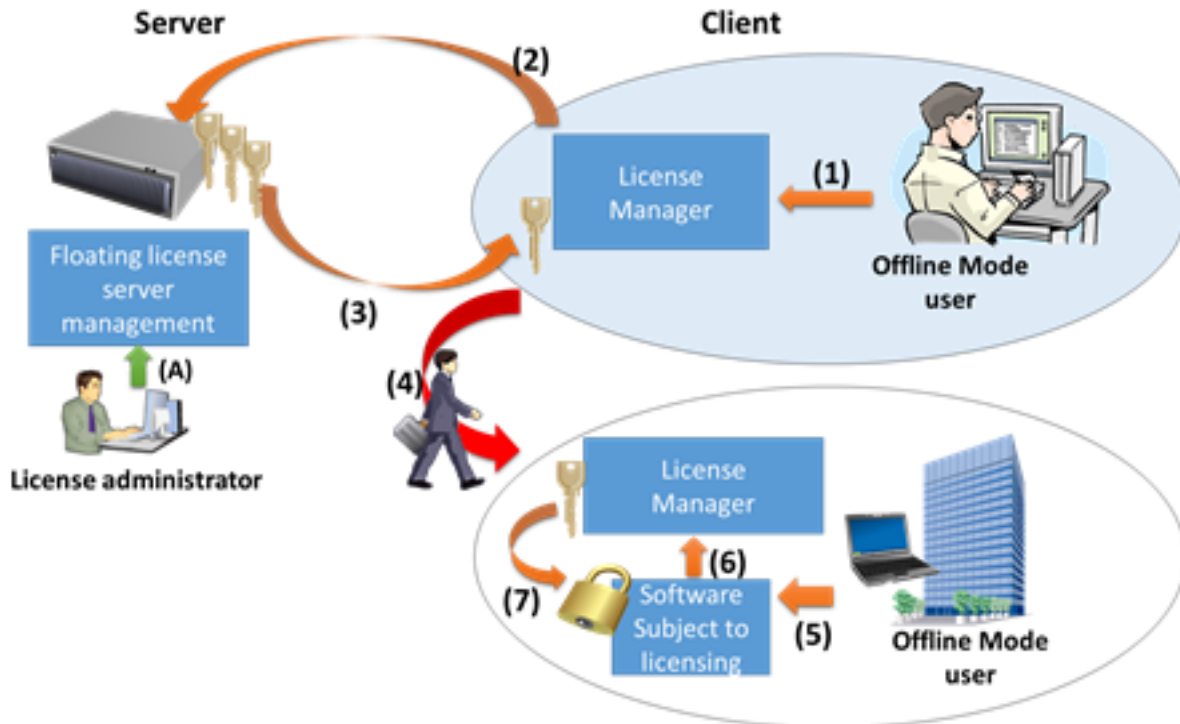
Figure 1.1 System Structure of Floating License



- (1)Launch
- (2)Request for license
- (3)Request for floating license
- (4)Floating license is granted
- (5)License is confirmed
- (A)License key is added

A floating license cannot be used unless the computer is connected to the server. Offline mode is a mechanism that occupies the license for a certain period in order to use the license in a state disconnected from the network environment.

Figure 1.2 System Structure of Floating License (Offline Mode)



- (1)Request for floating license (offline mode)
- (2)Request for floating license (offline mode)
- (3)Floating license (offline mode) is granted
- (4)Take out
- (5)Launch
- (6)Request for license
- (7)License is confirmed
- (A)License key is added

For both node locked and floating licenses, some licenses have no limit on the period of validity, while for others, the period is one year. Once the period of a time-limited license has expired, the development tool covered by the license cannot be used. To distinguish between the periods of validity, we denote the licenses with and without time limits as annual and permanent, respectively.

- Floating License (permanent)
- Floating License (annual)

## 1.2 Operating Environment

A floating license operates in the following environment.

- Hardware
  - Processor of 1 GHz or higher
  - Main memory: Min. 1 Gbyte (Min. 2 Gbytes for 64-bit Windows), at least 2 Gbytes are recommended
  - Display: Resolution of 1024 x 768 or higher, at least 65536 colors
- OS
  - Windows 8.1 (32 bits and 64 bits)
  - Windows 10 (32 bits and 64 bits)
  - Windows Server 2012: Standard (Server Core environment is unsupported)
  - Windows Server 2012 R2: Standard (Server Core environment is unsupported)
  - Windows Server 2016: Standard (Server Core environment is unsupported)
  - Windows Server 2019: Standard (Server Core environment is unsupported)
- Runtime library
  - .NET Framework 4.5.2
- License
  - Compiler V1 for RL78 (CC-RL) or later
    - Standard edition Floating License (permanent)
    - Standard edition Floating License (annual)
    - Professional edition Floating License (permanent)
    - Professional edition Floating License (annual)
  - Compiler V2 for RX (CC-RX) or later
    - Standard edition Floating License (permanent)
    - Standard edition Floating License (annual)
    - Professional edition Floating License (permanent)
    - Professional edition Floating License (annual)
  - Compiler V1 for RH850 (CC-RH)
    - Standard edition Floating License (permanent)
    - Standard edition Floating License (annual)
    - Professional edition Floating License (permanent)
    - Professional edition Floating License (annual)
  - Compiler V1 for RH850 (CC-RH) or later
    - Standard edition Floating License (permanent)
    - Standard edition Floating License (annual)
    - Professional edition Floating License (permanent)
    - Professional edition Floating License (annual)
    - Upgrade (version) Standard edition Floating License (permanent)
    - Upgrade (version) Professional edition Floating License (permanent)

Registering an Upgrade (version) Floating License (permanent) and a Floating License (permanent) as the source of the upgrade with the floating license server allows you to use the functions enabled by a Floating License (permanent) at the destination of the upgrade.

Upgrade (version) Floating License (permanent)	Floating License (permanent) that is the source of the upgrade	Floating License (permanent) that is the destination of the upgrade
Compiler Upgrade (version) Standard V2 for RH850 (CC-RH)	Compiler Standard V1 for RH850 (CC-RH)	Compiler Standard V2 for RH850 (CC-RH)
	Compiler Professional V1 for RH850 (CC-RH)	

Upgrade (version) Floating License (permanent)	Floating License (permanent) that is the source of the upgrade	Floating License (permanent) that is the destination of the upgrade
Compiler Upgrade (version) Professional V2 for RH850 (CC-RH)	Compiler Professional V1 for RH850 (CC-RH)	Compiler Professional V1 for RH850 (CC-RH)

**Example** When “Compiler Upgrade (version) Standard V2 for RH850 (CC-RH)” and “Compiler Professional V1 for RH850 (CC-RH)” are registered with the floating license server, the state is the same as that after the following licenses have been registered.

- Compiler Professional V1 for RH850 (CC-RH)
- Compiler Standard V2 for RH850 (CC-RH)

**Caution** An Upgrade (version) Floating License (permanent) cannot be used in combination with a Floating License (annual).



## 2. FUNCTIONS

This chapter describes functions of a floating license server.

### 2.1 Installing Floating License Server

Insert the CD in the drive of floating license server's PC. The preparing to Install page appears automatically. If the page does not appear automatically, double-click "Setup.exe" in the route directory of the CD.

Click the [Begin Server Setup] button, the floating license server setup begins.

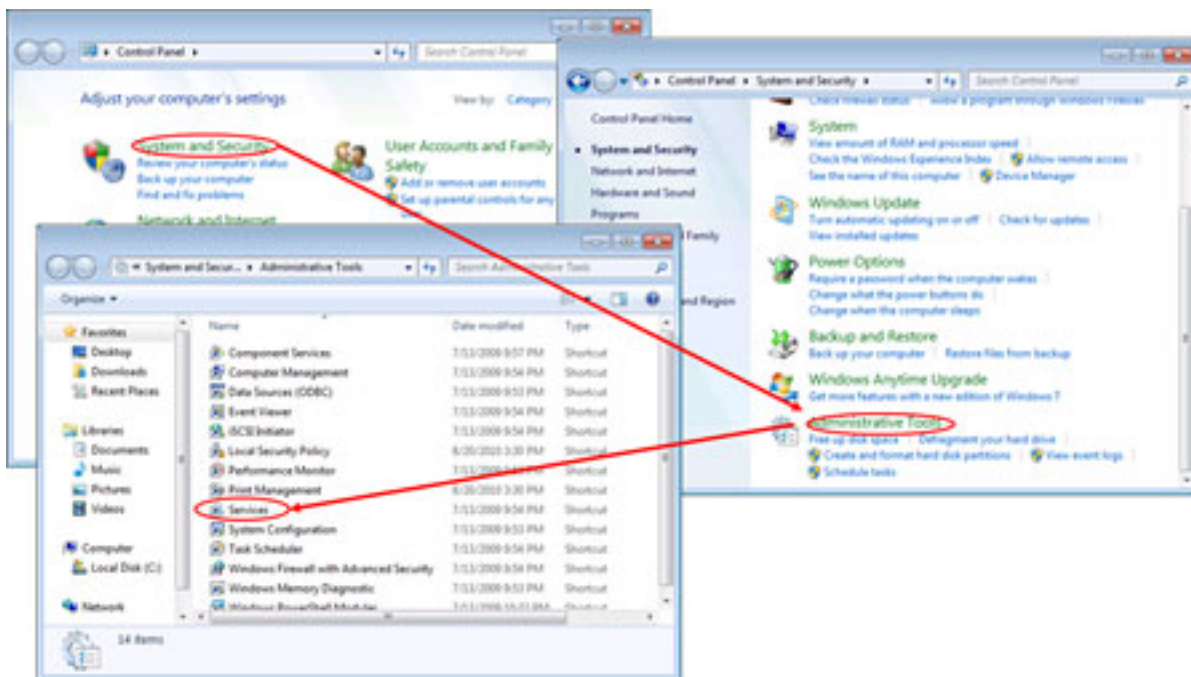
**Caution** The floating license server setup must be conducted with administrator privileges.

The floating license service is registered to the Windows services and it will be automatically started when the PC is booted up. After the service has been enabled with an option, the server continues to operate even after logging off or before logging on.

You can confirm the status of the Windows services by the following process.

- (1) Open the Services snap-in  
 Select Control Panel >> [System and Security] >> [Administrative Tools], and double-click [Services].

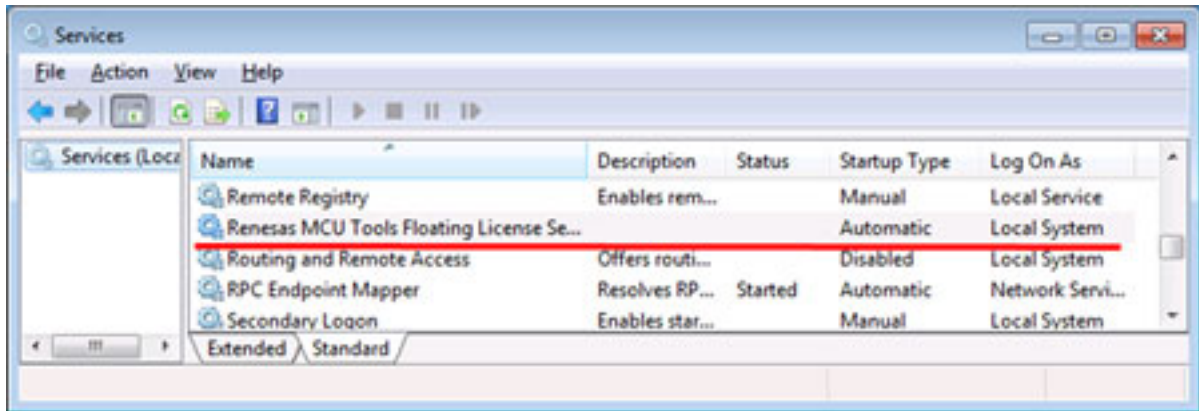
Figure 2.1 Open Services Snap-in



The Services snap-in will open.

- (2) Confirming the Windows services  
 "Renesas MCU Tools Floating License Service" is displayed in the Windows services list.

Figure 2.2 Services Snap-in



## 2.2 Uninstalling Floating License Server

You can uninstall the floating license using [Programs and Features] in the control panel. Select “Renesas MCU Tools Floating License Server” and click the [Uninstall] button.

**Caution** Uninstalling the floating license client must be conducted with administrator privileges.

## 2.3 Using a Floating License

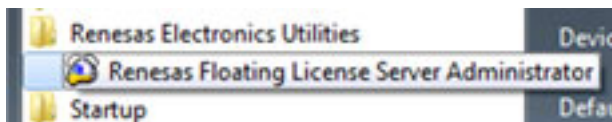
This section describes how to use a floating license.

### 2.3.1 Setting up the server

Start up the server administrator from the start menu and make initial settings.

- (1) Launch the server administrator GUI  
Select the Windows [Start] menu >> [All Programs] >> [Renesas Electronics Utilities] >> [Renesas Floating License Server Administrator].

Figure 2.3 Launch the Server Administrator GUI



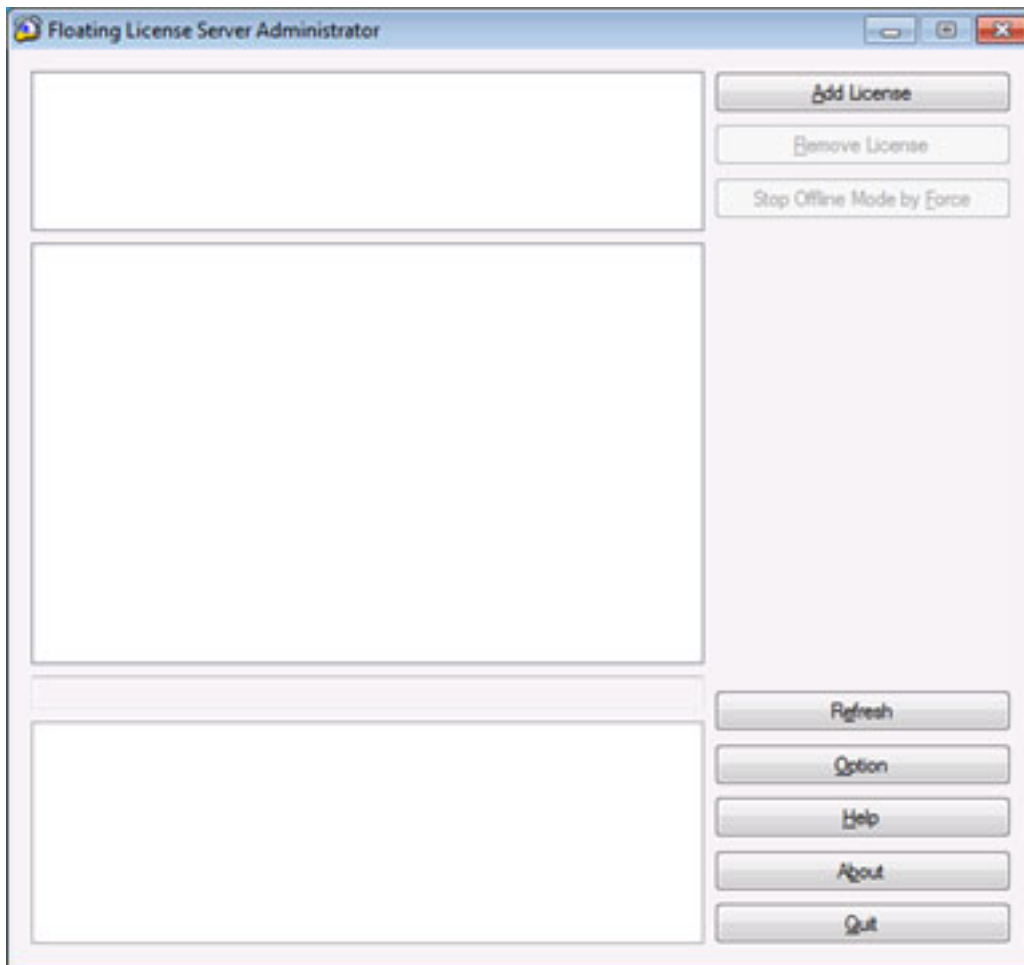
**Caution** Launching the server administrator GUI must be conducted with administrator privileges.

**Remark** In Windows 8.1, select [Renesas Floating License] on the start screen.  
In Windows 10, select Windows [Start] menu >> [All apps] >> [Renesas Electronics Utilities] >> [Renesas Floating License Server Administrator].

The Floating License Server Administrator window will open.

- (2) Open the server option dialog box  
Click the [Option] button.

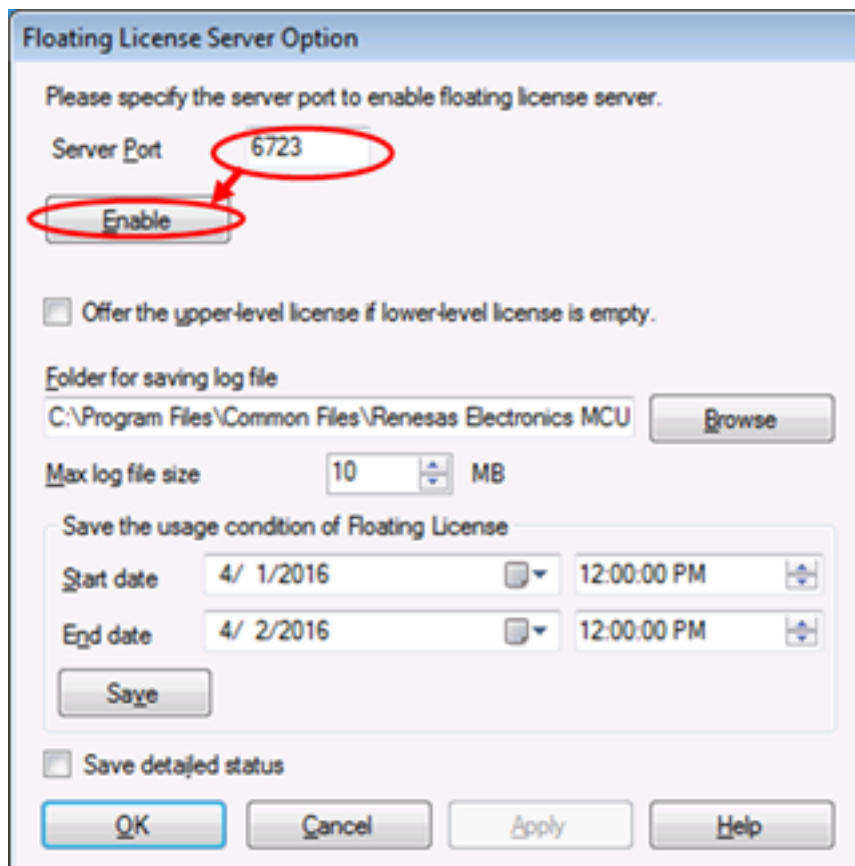
Figure 2.4 Open the Floating License Server Option Dialog Box



The Floating License Server Option dialog box will open.

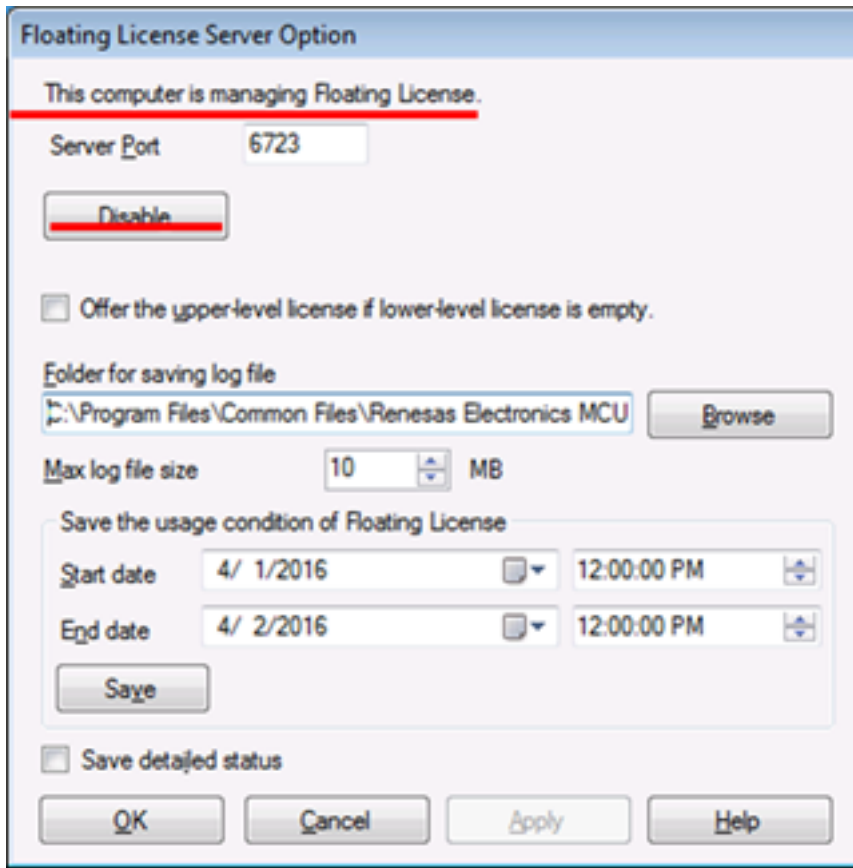
Specify the port number to be used by the license server in [Server Port]. If there is a problem in the initial value (6723), change the port number.  
 Clicking the [Enable] button starts the floating license server.

Figure 2.5 Floating License Server Option Dialog Box (Disabled)



When the server has started, the display changes to that shown on the below.

Figure 2.6 Floating License Server Option Dialog Box (Enabled)



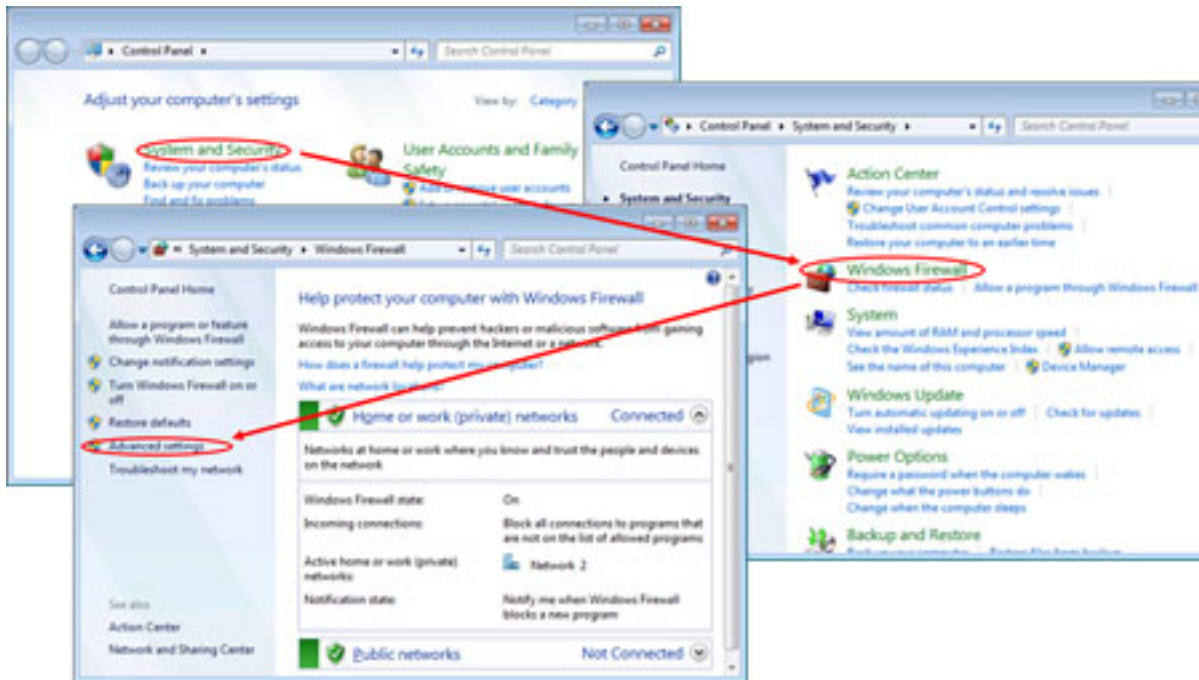
Click the [OK] button to close the dialog box.

### 2.3.2 Setting up the firewall

A firewall needs to be set up in order to receive license requests from clients.  
 Enable reception by the port number set in [Server Port] through the firewall setting.  
 If the Windows firewall is used, set up as follows.

- (1) Open the Windows firewall option  
 Select Control Panel >> [System and Security] >> [Windows firewall] >> [Advanced settings].

Figure 2.7 Open the Windows Firewall Window



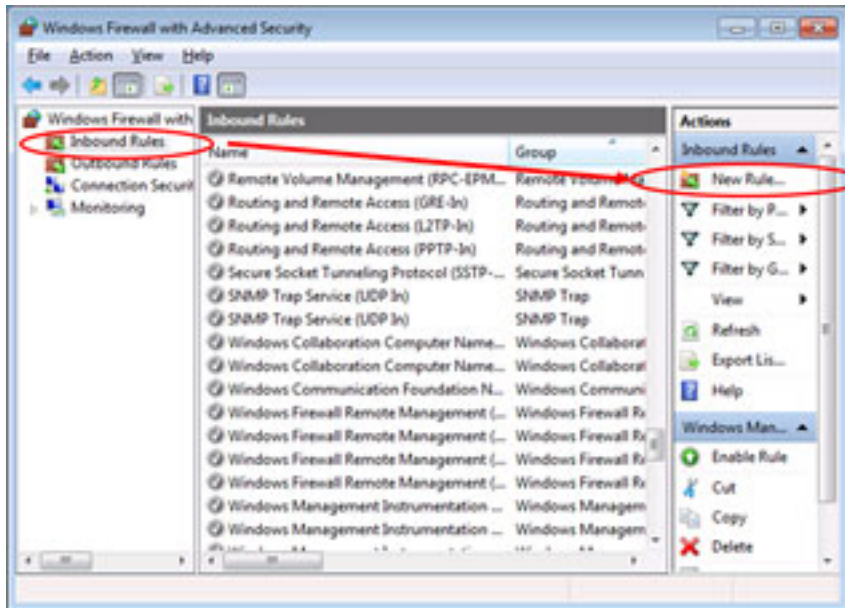
The Windows firewall window will open.

**Caution** Setting up a windows firewall must be conducted with administrator privileges.



- (2) Add a firewall rule  
 Select the [Inbound rules]>>[New Rule].

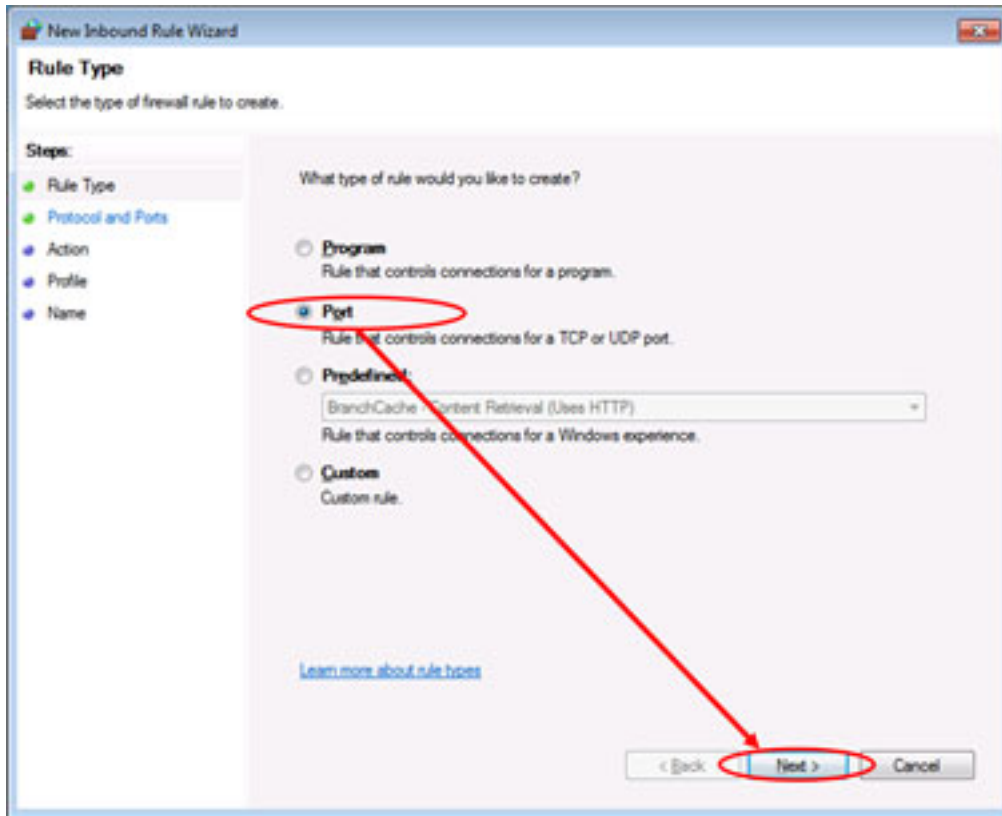
Figure 2.8 Add a Firewall Rule



The New Inbound Rule Wizard dialog box will open.

- (3) Set up a firewall rule
  - (a) Specify the rule type  
Select [Port] and click the [Next] button.

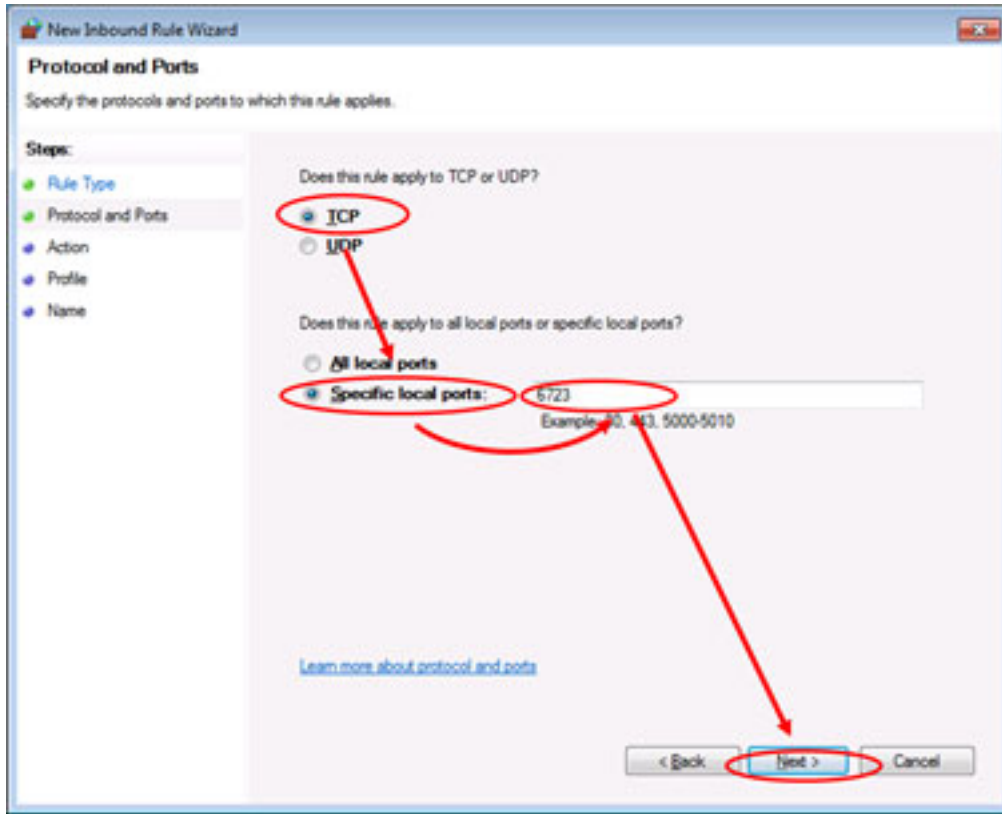
Figure 2.9 New Inbound Rule Wizard (Rule Type)



[Protocol and Ports] will open.

- (b) Specify the protocol and ports  
 Select [TCP] and [Specific local ports], and specify the port number specified in “2.3.1 Setting up the server” (initial value of 6723).  
 Click the [Next] button.

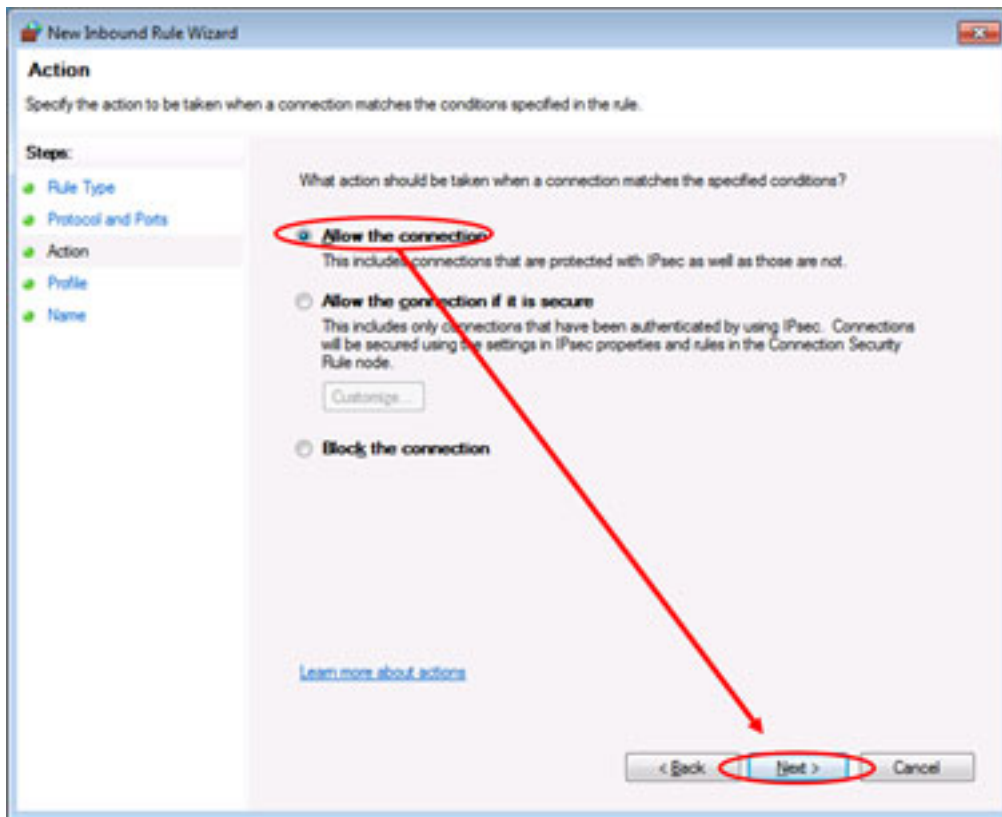
Figure 2.10 New Inbound Rule Wizard (Protocol and Ports)



[Action] will open.

- (c) Specify the action  
 Select [Allow the connection] and click the [Next] button.

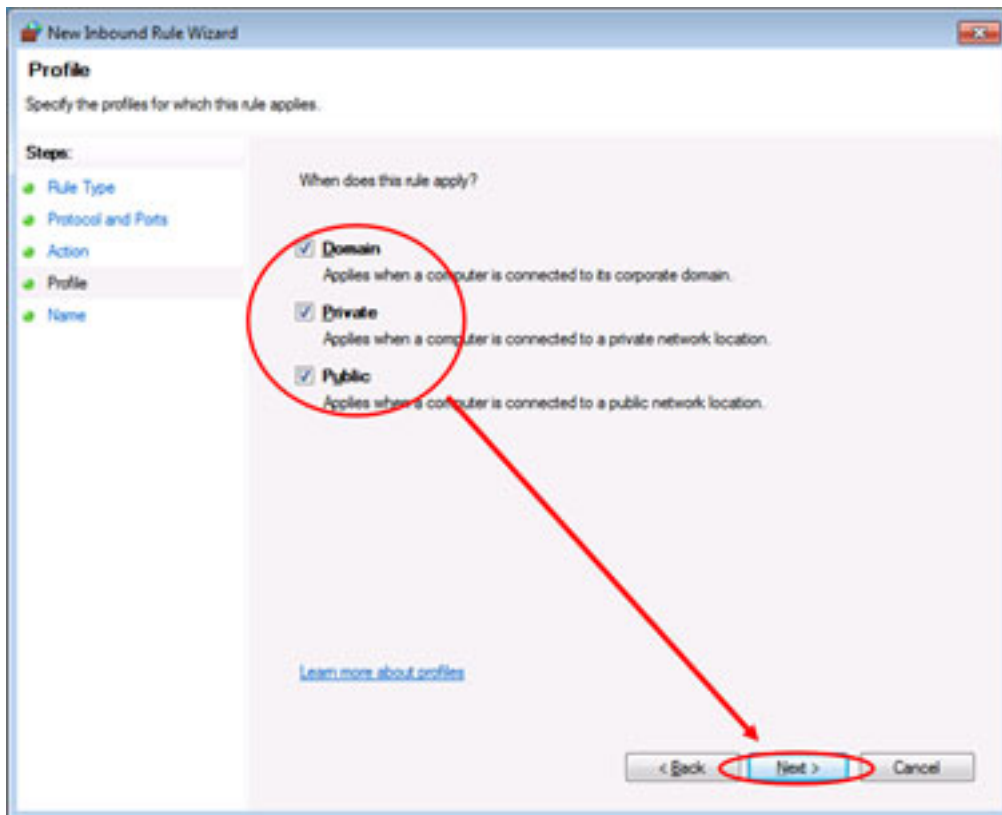
Figure 2.11 New Inbound Rule Wizard (Action)



[Profile] will open.

- (d) Specify the profile  
 Hold the initial state (all check boxes are selected) or uncheck unnecessary boxes according to the network environment, and click the [Next] button.

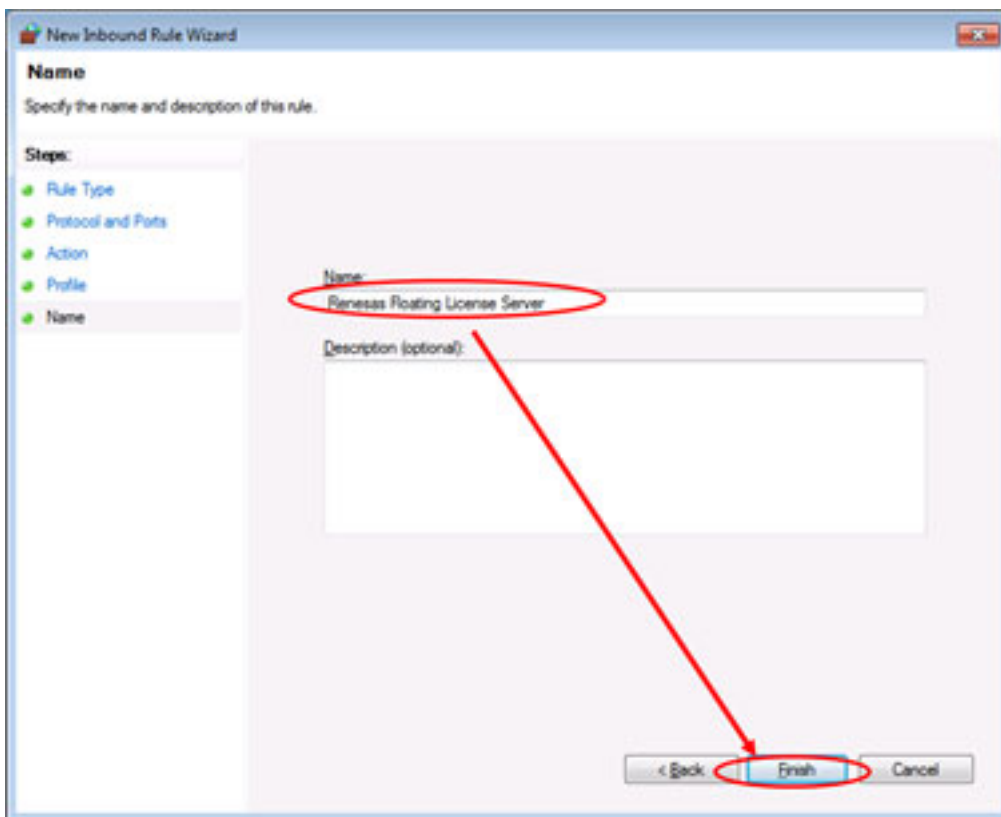
Figure 2.12 New Inbound Rule Wizard (Profile)



[Name] will open.

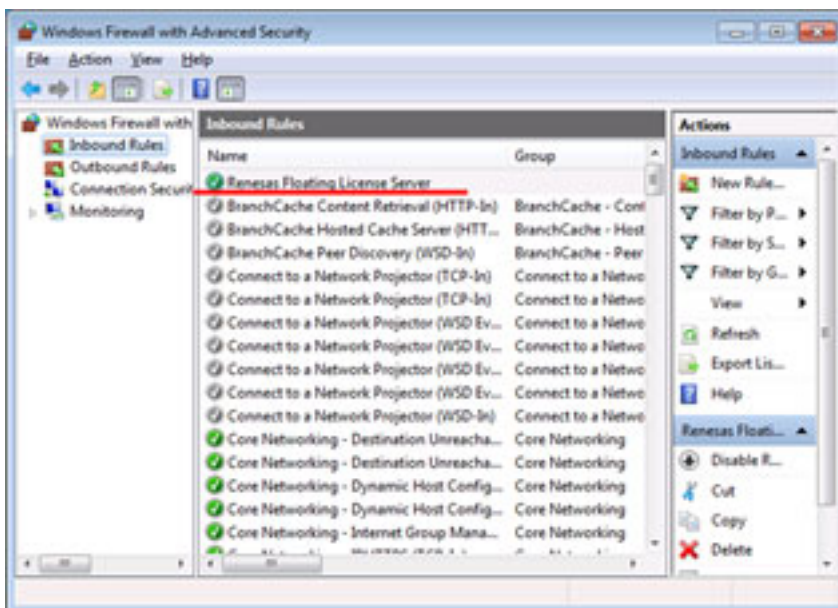
- (e) Specify the name  
Specify a name that is recognizable when to be changed later (example: Renesas Floating License Server), and click the [Finish] button.

Figure 2.13 New Inbound Rule Wizard (Name)



The New Inbound Rule Wizard dialog box will close, and the set rule is added to the list of [Inbound Rules].

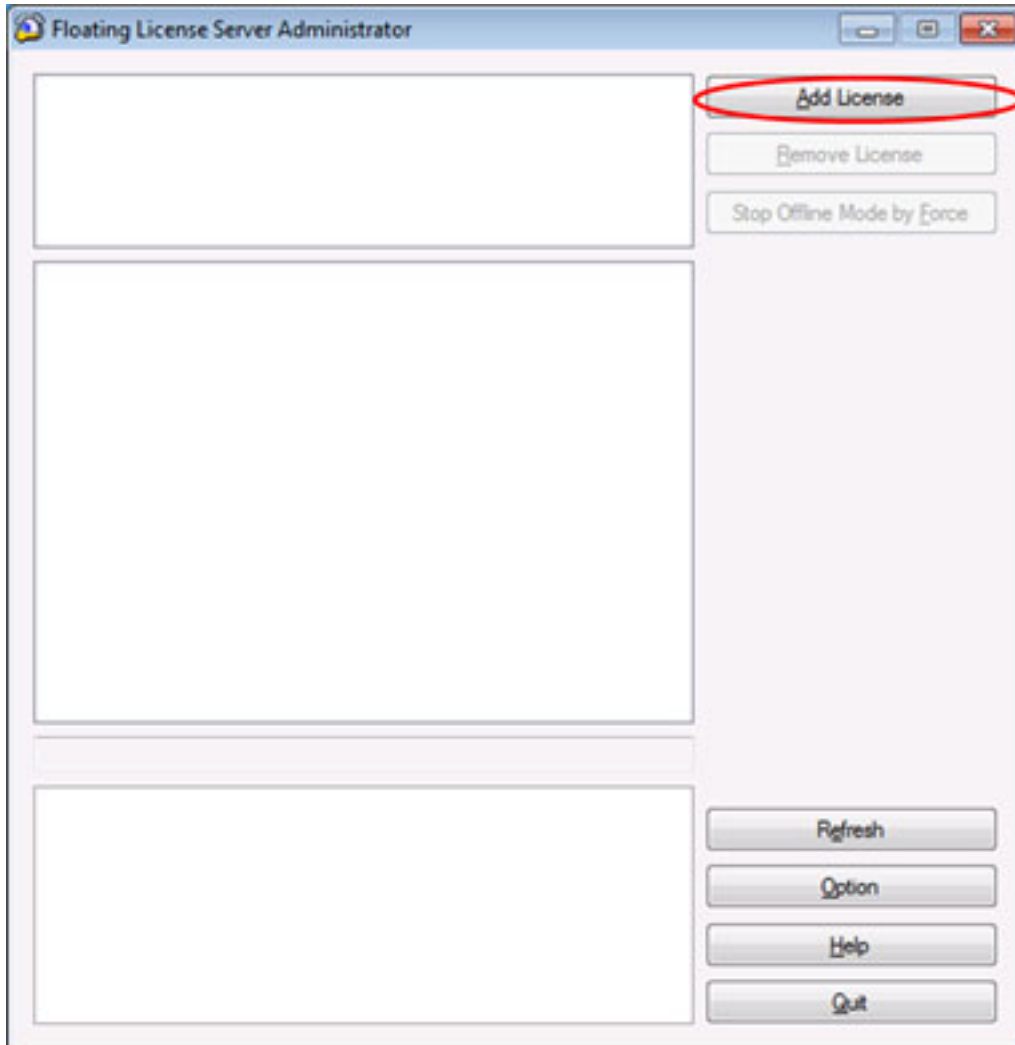
Figure 2.14 Windows Firewall window (Inbound Rules)



### 2.3.3 Adding a license

- (1) Open the Add License dialog box  
Click the [Add License] button of the Floating License Server Administrator window.

Figure 2.15 Open the Add License Dialog Box



The Add License dialog box will open.

- (2) Enter the license key  
Enter the license key in [Add following License keys] text box of the Add License dialog box, and click the [Add] button.  
More than one license can be entered in the text box at a time.

Figure 2.16 Add License Dialog Box

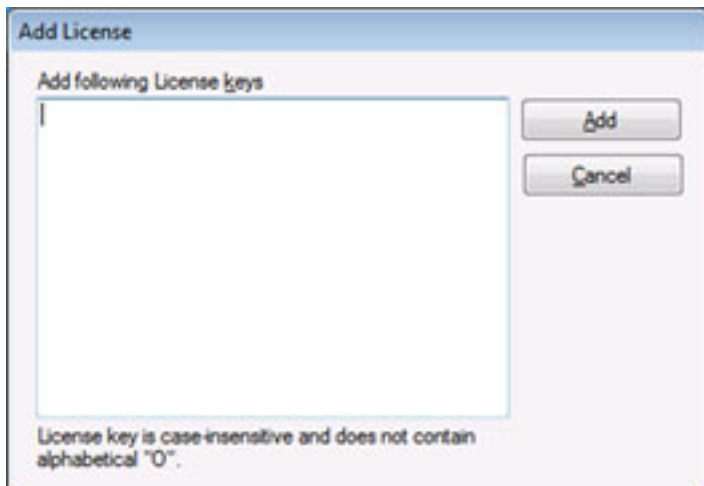
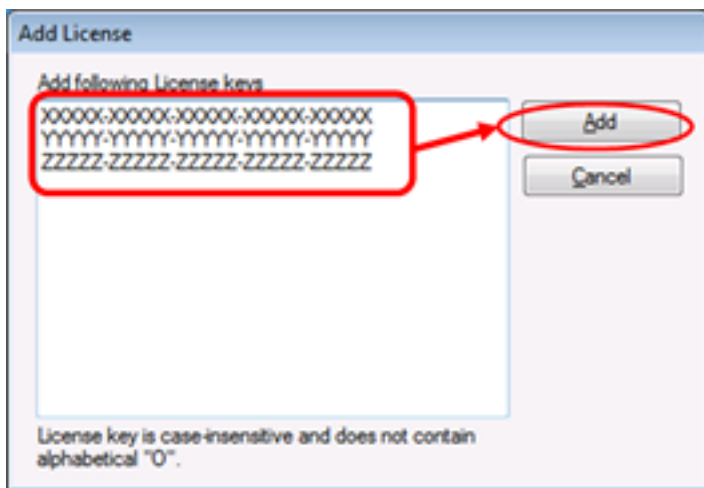


Figure 2.17 Enter the License Keys

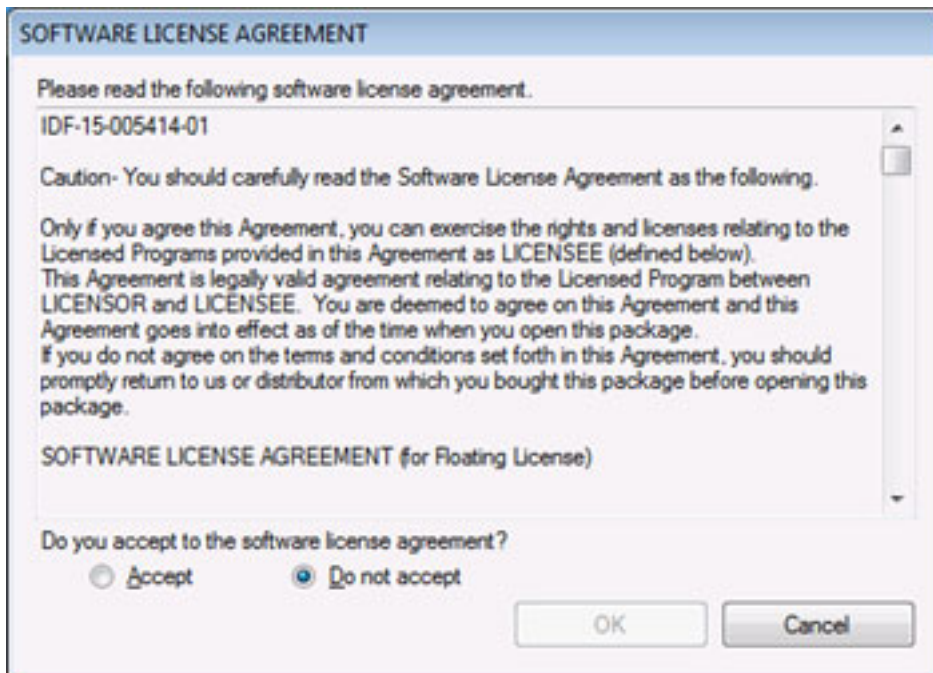


- Caution 1.** Enter the license key compliant with the floating license. The Add License dialog box show the invalid key error if the non-compliant license key is entered.
- Caution 2.** To register an Upgrade (version) Floating License (permanent), a Floating License (permanent) must have been registered as the source of the upgrade. Start by adding the Floating License (permanent) to the floating license server or add the Upgrade (version) License and Floating License (permanent) at the same time.



The SOFTWARE LICENSE AGREEMENT dialog box appears if you have not yet accepted the license agreement for addition of a node locked license.

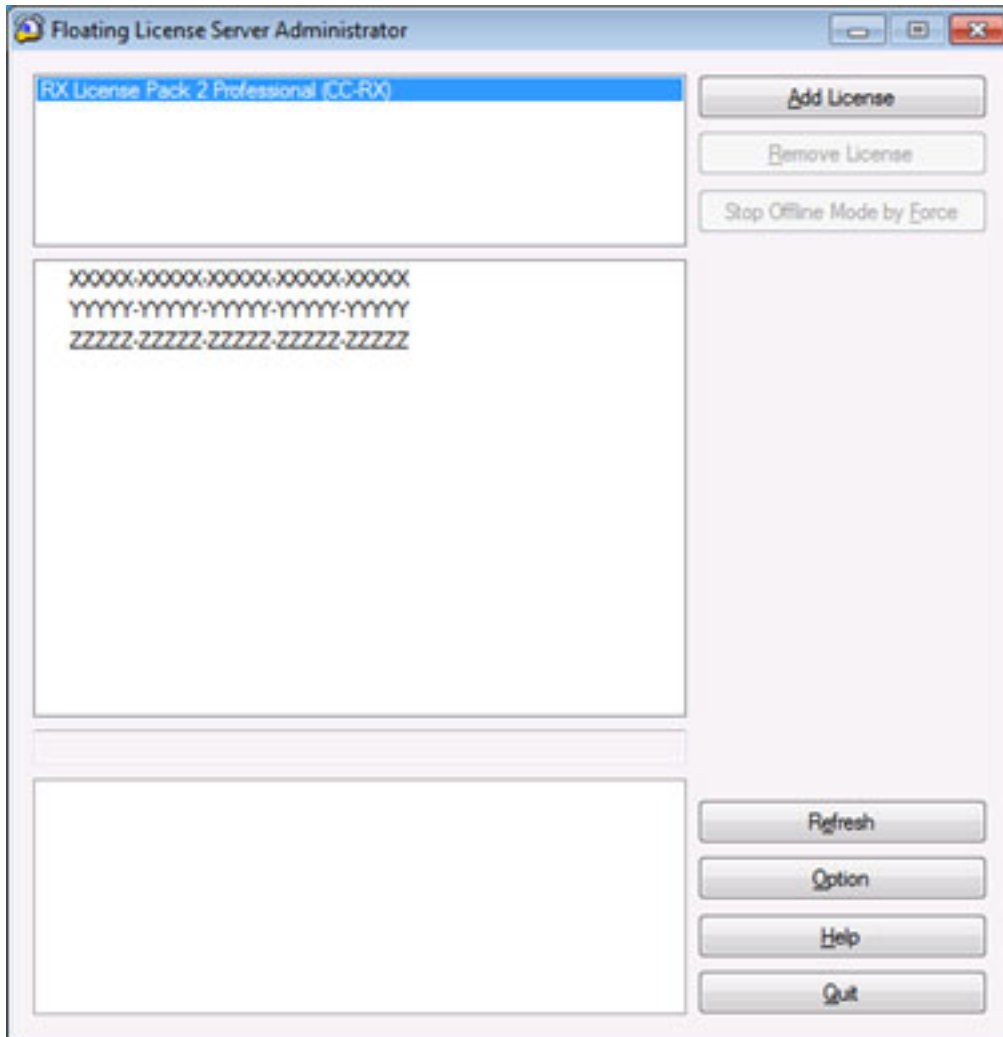
Figure 2.18 SOFTWARE LICENSE AGREEMENT Dialog Box



Select [Accept] and click on the [OK] button. The node locked license you have added is now available.

The Add License dialog box will close, and the entered license key is added to the list in the Floating License Server Administrator window.

Figure 2.19 Floating License Server Administrator Window After Adding the License Keys



### 2.3.4 Assigning a floating license to the client

When the floating license server receive a license request from a client, the server assigns an unused license to the client.

The term of validity of a floating license is 30 minutes from the time that the license is acquired. The term of validity of a floating license (offline mode) is the days designated by the client (max. 99 days).

### 2.3.5 Confirming the license usage status

If a license name is selected, license keys are indicated in below.

A license in use is displayed in boldface, and the license status is indicated by an icon.





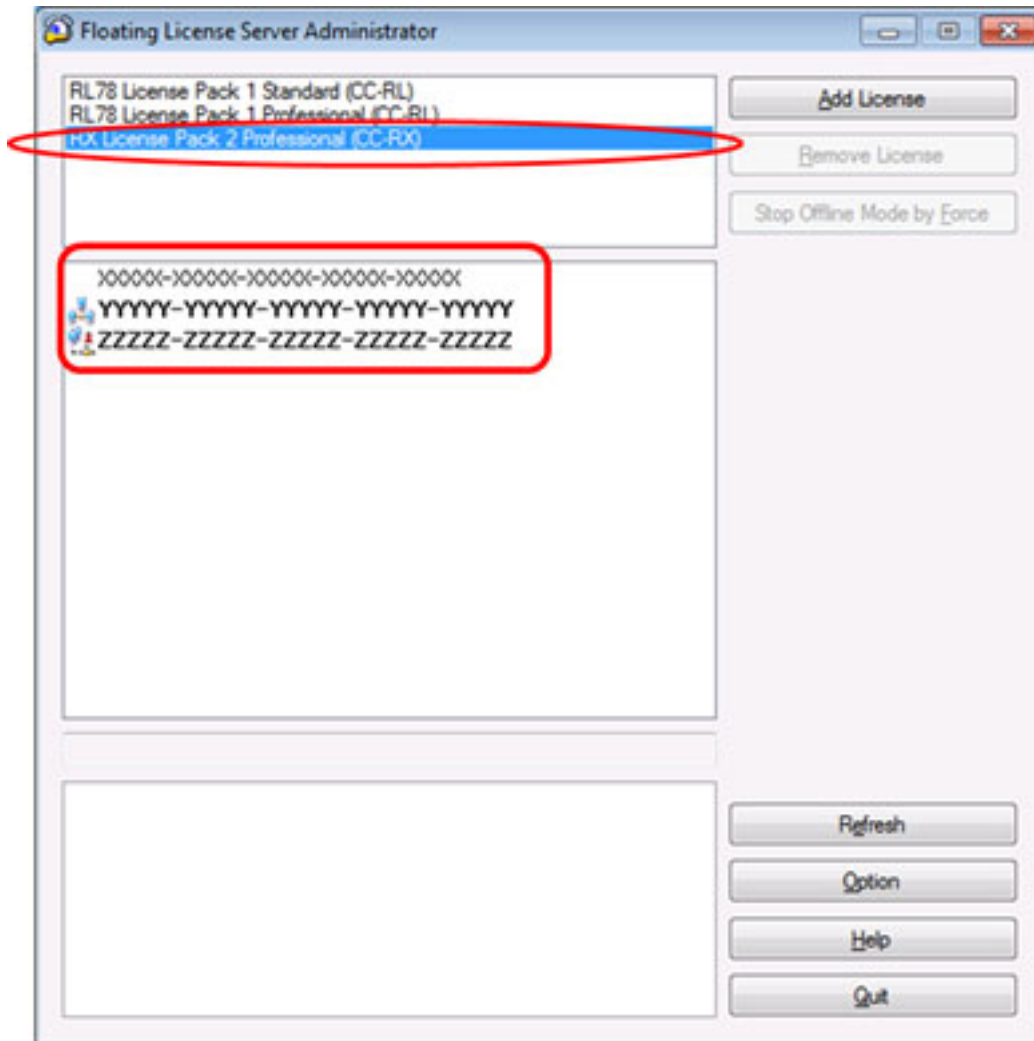
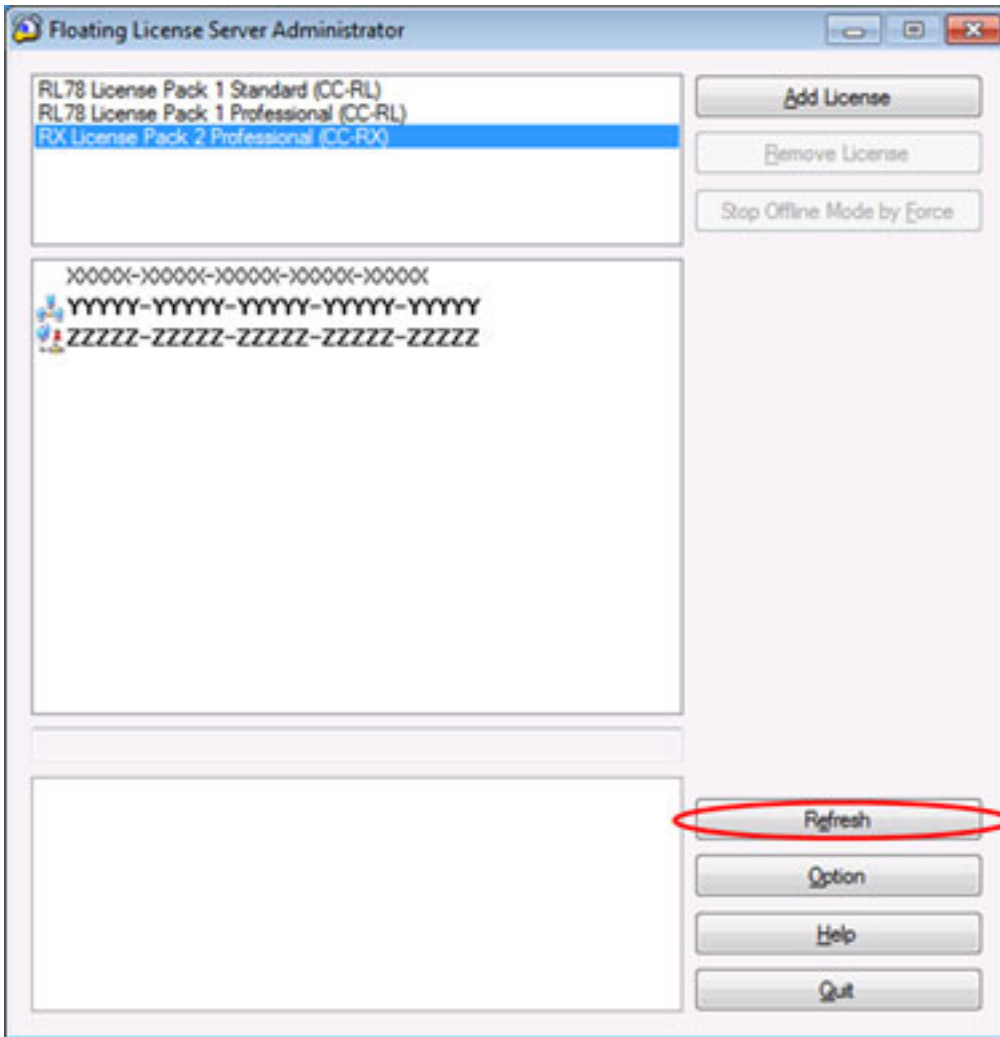
	Using as the floating license.
	Using as the offline license.
	The expiration date of an annual floating license is approaching.
	This annual floating license is no longer available because it is out of date.

Figure 2.20 License Usage Status



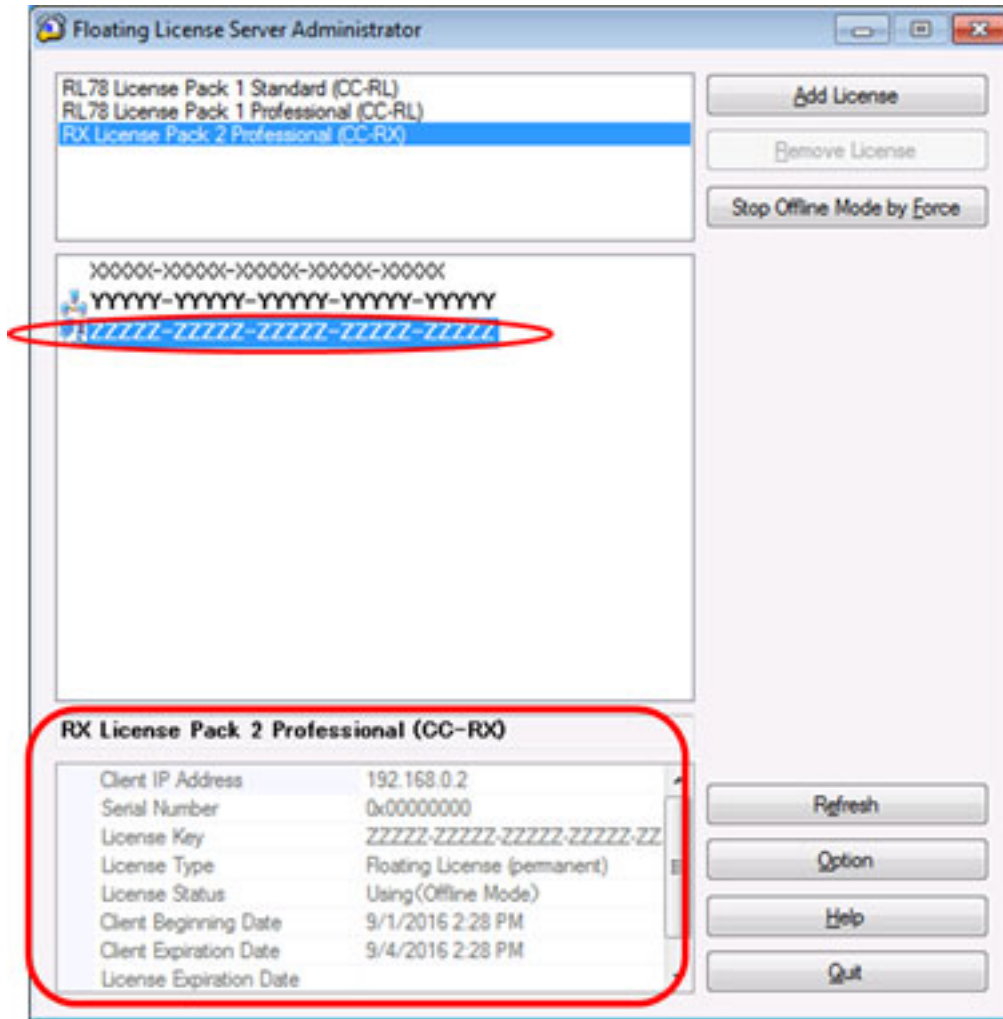
If the displayed contents of the GUI are old, click the [Refresh] button to update the displayed information.

Figure 2.21 Refresh the Displayed Information



And click the license key. The license status is displayed in the bottom part of the window.

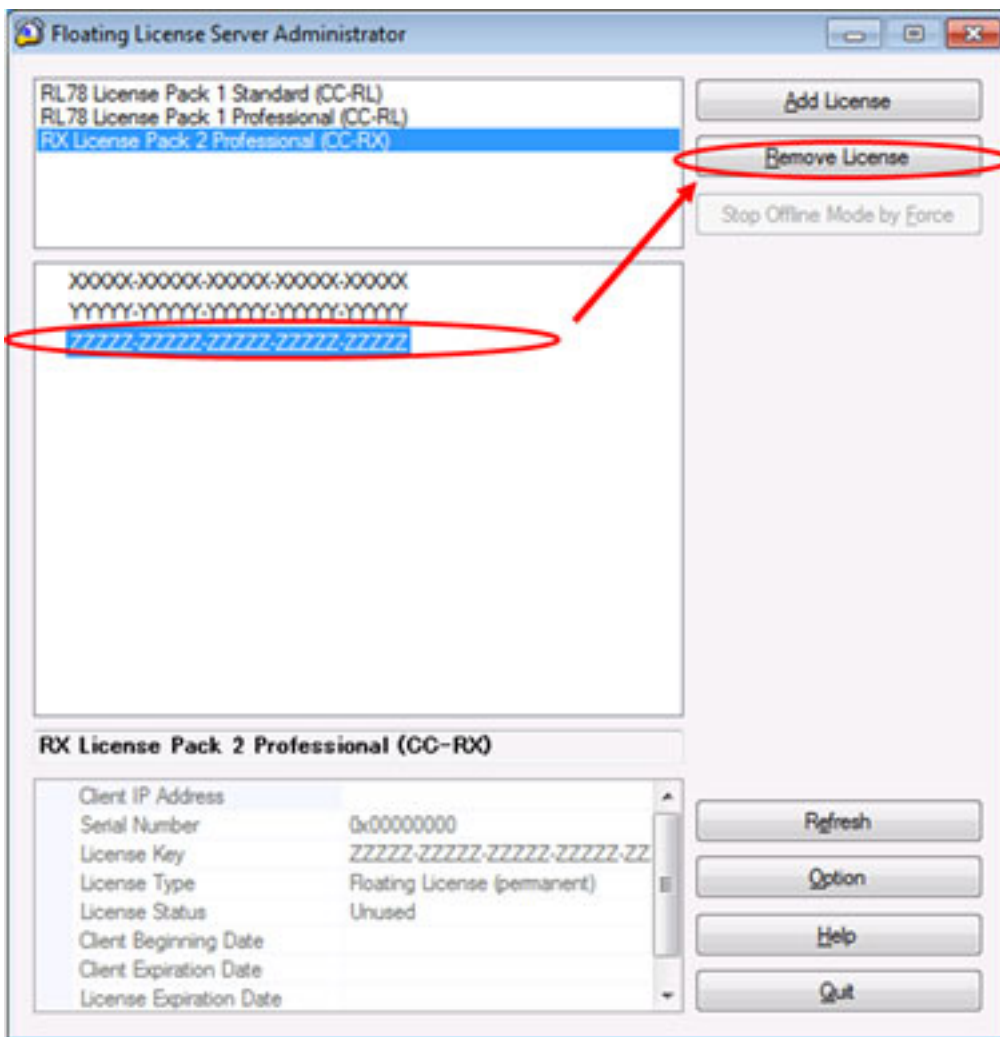
Figure 2.22 Detailed Information for the License Status



### 2.3.6 Deleting a license

Select a license key on the Floating License Server Administrator window, and click the [Remove License] button.

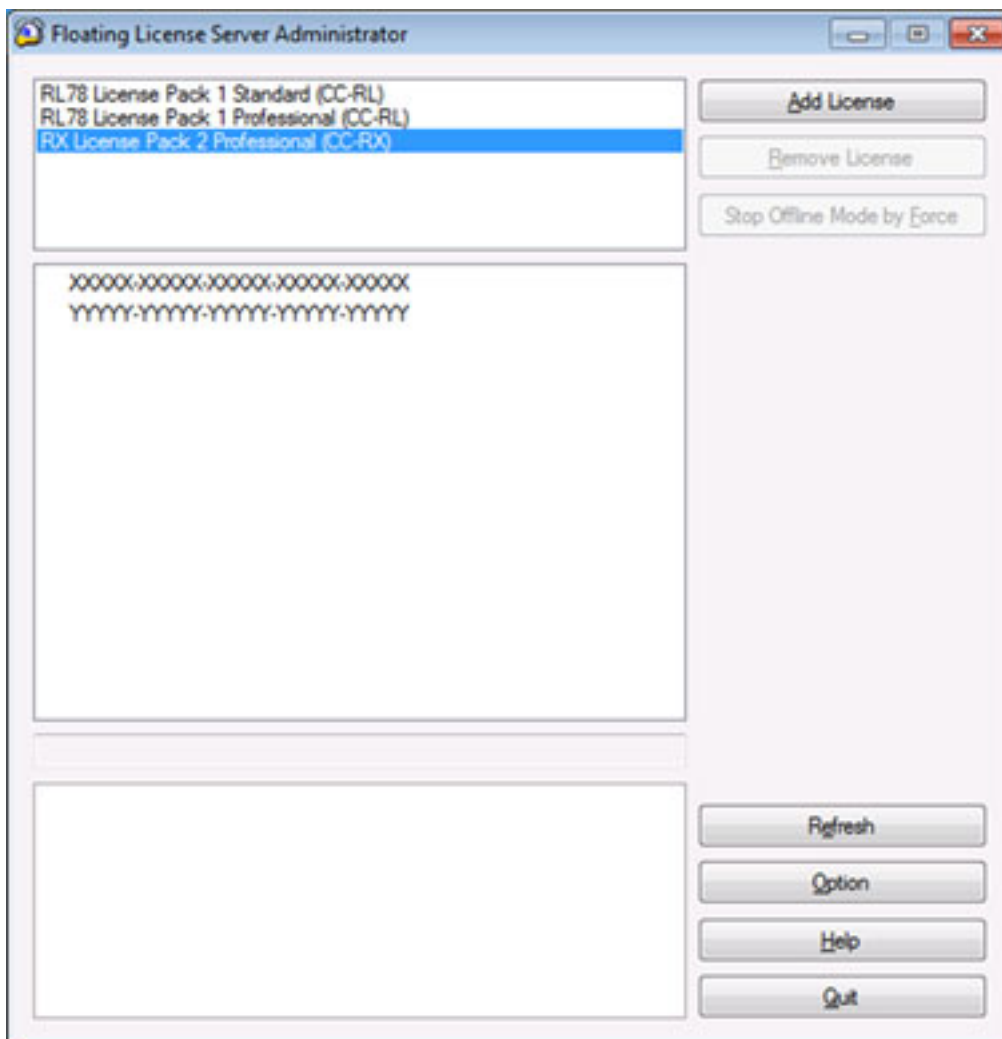
Figure 2.23 Floating License Server Administrator Window Before Deleting a License



**Caution** While an Upgrade (version) Floating License (permanent) is registered, the Floating License (permanent) that is the source of the upgrade cannot be deleted. Start by deleting the Upgrade (version) Floating License (permanent).

The selected license key will be removed in the Floating License Server Administrator window, and the license is no longer subject to management by the license service.

Figure 2.24 Floating License Server Administrator Window After Deleting a License



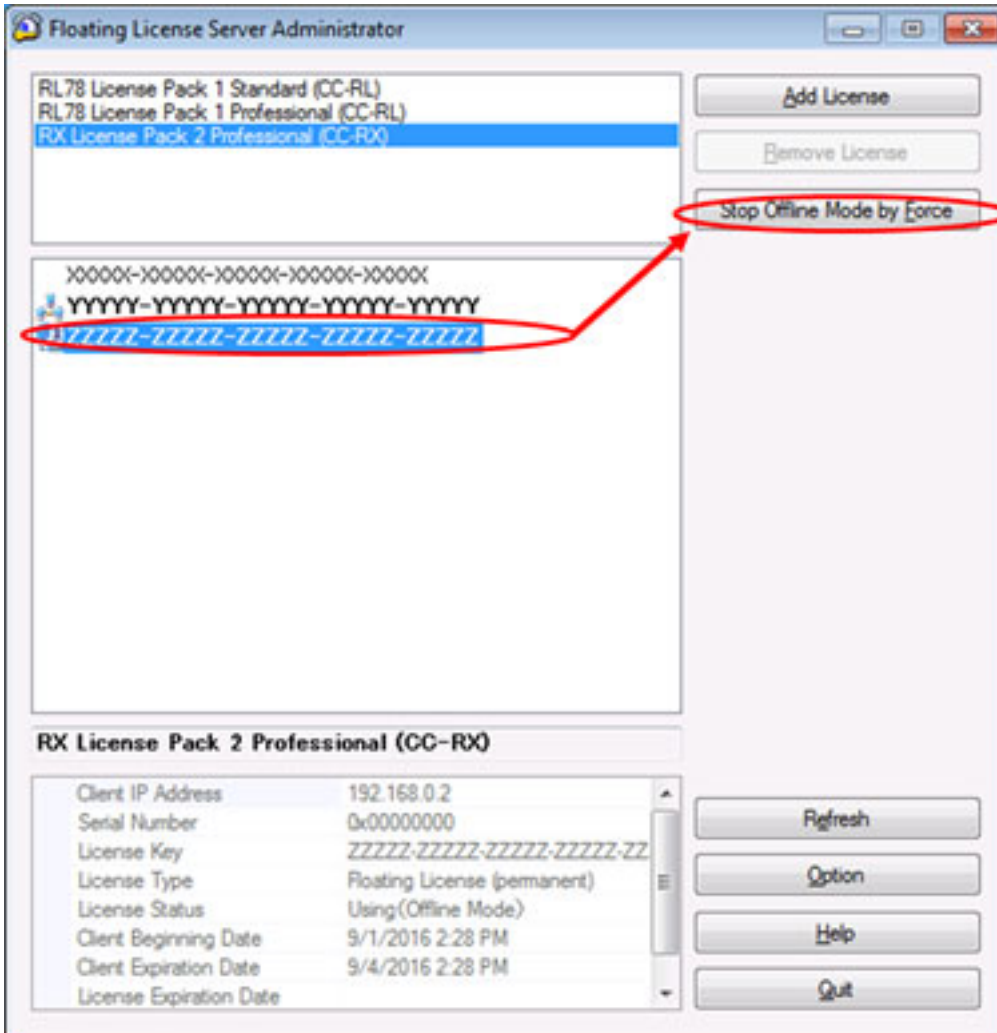


### 2.3.7 Forcibly leaving offline mode

Select a license key of the license in use as a floating license (offline mode) on the Floating License Server Administrator window, and click the [Stop Offline Mode by Force] button.

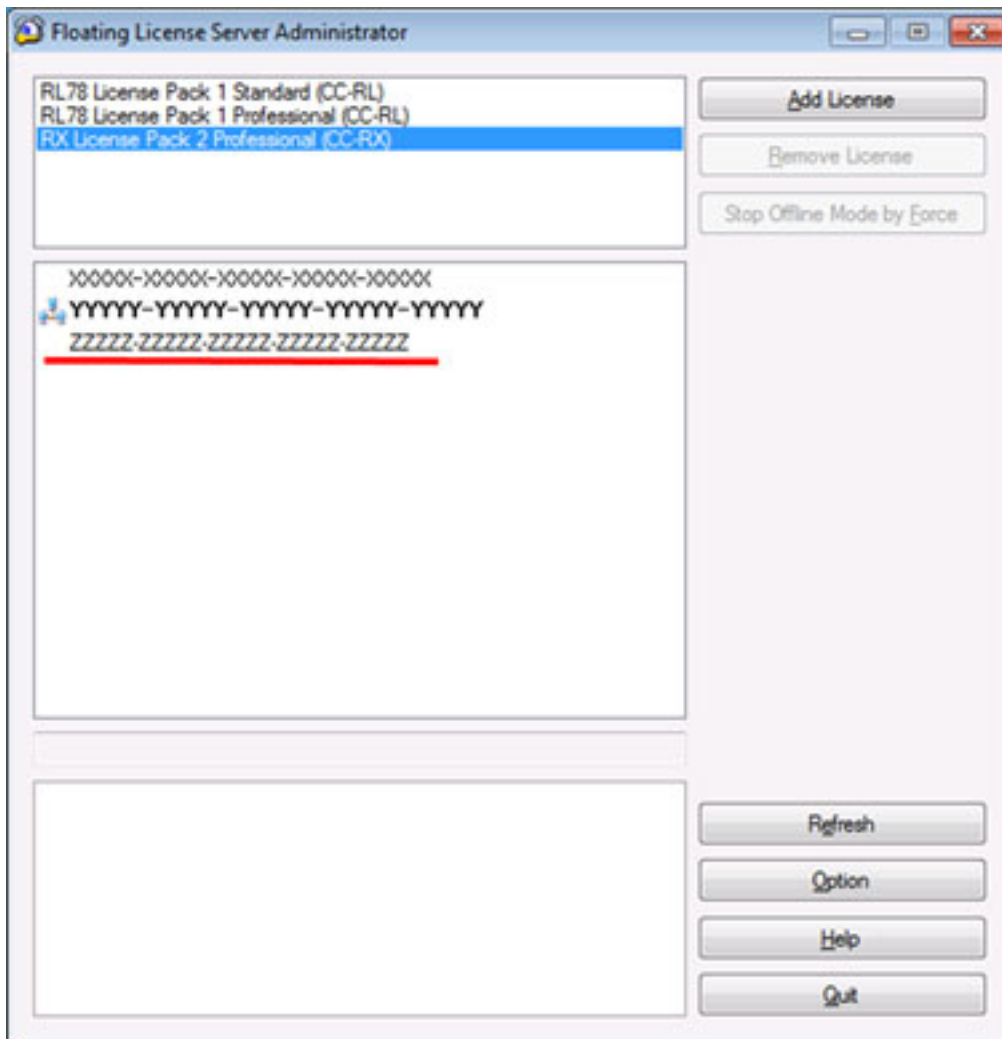
A license in use as a floating license can not be released.

Figure 2.25 Floating License Server Administrator Window Before Forcibly Leaving a License



The selected license key will be unused.

Figure 2.26 Floating License Server Administrator windows After Forcibly Reaving a License



**Caution** This function should be used when a client cannot release a license because there was trouble in the client's PC. Normally, a license should be released from the client.

### 2.3.8 Saving the states of floating license usage

Log files which have been saved are read and transitions in the states of usage of floating licenses are extracted and output to the CSV files. Using a spreadsheet program such as Microsoft Excel to display the contents of the CSV files as graphs enables checking of transitions in the states of usage under each of the licenses.

Enter the dates and times to start and end logging in [Start date] and [End date] and click on the [Save] button in the Floating License Server Option dialog box.

Figure 2.27 Floating License Server Option Dialog Box

Floating License Server Option

This computer is managing Floating License.

Server Port 6723

Disable

Offer the upper-level license if lower-level license is empty.

Folder for saving log file

C:\Program Files\Common Files\Renesas Electronics MCU Browse

Max log file size 10 MB

Save the usage condition of Floating License

Start date 4/ 1/2016 12:00:00 PM

End date 4/ 2/2016 12:00:00 PM

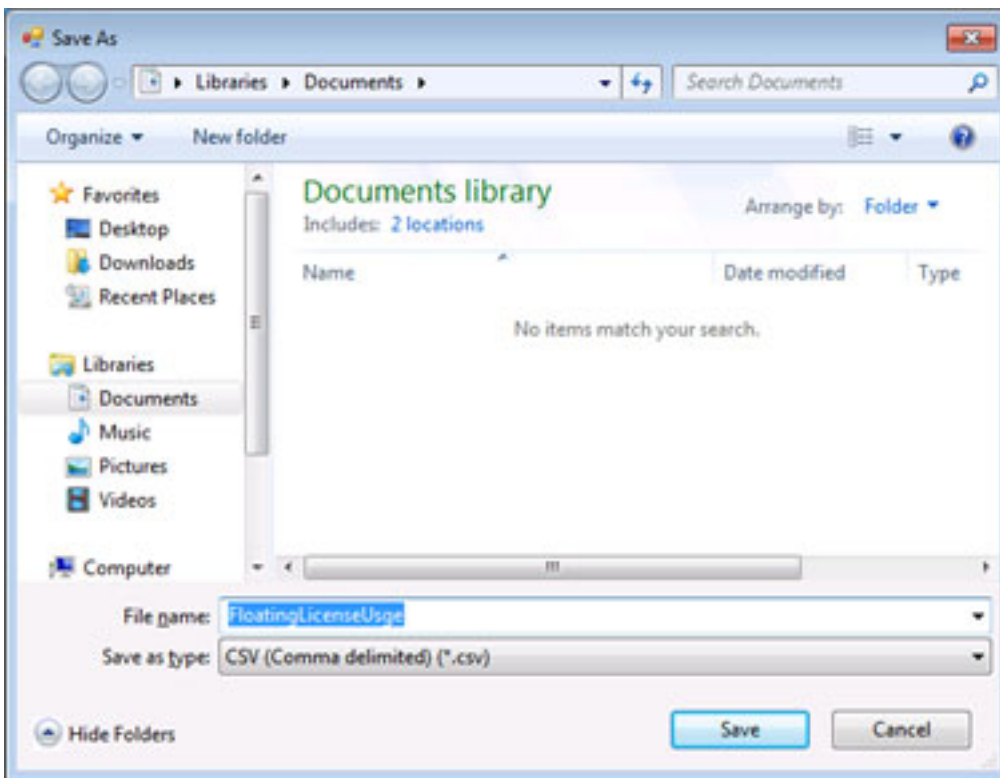
Save

Save detailed status

OK Cancel Apply Help

Specify the name of the CSV file and the directory for saving the file in the Save As dialog box and click on the [Save] button. Transitions in the number of licenses in use are then saved in the CSV file over the specified period.

Figure 2.28 Save As Dialog Box



The format of the CSV file is as follows.

```

, name of license 1, name of license 2, ...
date and time specified in [Start date],the number of machines holding licenses under license 1 at the start of logging,
the number of machines holding licenses under license 2 at the start of logging, ...
...
date and time when the number of licenses held changed, the number of machines holding licenses under license 1
before the change, the number of machines holding licenses under license 2 before the change, ...
date and time when the number of licenses held changed, the number of machines holding licenses under license 1
after the change, the number of machines holding licenses under license 2 after the change, ...
...
date and time specified in [End date],the number of machines holding licenses under license 1 at the end of logging,
the number of machines holding licenses under license 2 at the end of logging,...
    
```

Two lines indicating date and time are output when the number of instances of usage of a license changes; the first line indicates the numbers of licenses in use before the change, and the second line indicates the numbers after the change.

Example of output

,RX License Pack 2 Professional,RL78 License Pack 1 Standard	2016/9/12 11:33:09,4,1
2016/9/12 10:50:00,0,0	2016/9/12 11:33:09,5,1
2016/9/12 10:55:11,0,0	2016/9/12 11:41:24,5,1
2016/9/12 10:55:11,1,0	2016/9/12 11:41:24,4,1
2016/9/12 10:57:23,1,0	2016/9/12 11:41:51,4,1
2016/9/12 10:57:23,2,0	2016/9/12 11:41:51,3,1
2016/9/12 11:00:34,2,0	2016/9/12 11:44:02,3,1
2016/9/12 11:00:34,2,1	2016/9/12 11:44:02,4,1
2016/9/12 11:01:13,2,1	2016/9/12 11:52:29,4,1
2016/9/12 11:01:13,3,1	2016/9/12 11:52:29,5,1
2016/9/12 11:11:23,3,1	2016/9/12 11:55:53,5,1
2016/9/12 11:11:23,4,1	2016/9/12 11:55:53,4,1
2016/9/12 11:11:50,4,1	2016/9/12 12:01:00,4,1
2016/9/12 11:11:50,5,1	2016/9/12 12:01:00,3,1
2016/9/12 11:25:12,5,1	2016/9/12 12:03:09,3,1
2016/9/12 11:25:12,4,1	2016/9/12 12:03:09,2,1
2016/9/12 11:25:53,4,1	2016/9/12 12:14:02,2,1
2016/9/12 11:25:53,5,1	2016/9/12 12:14:02,1,1
2016/9/12 11:27:25,5,1	2016/9/12 12:22:29,1,1
2016/9/12 11:27:25,4,1	2016/9/12 12:22:29,0,1
2016/9/12 11:31:00,4,1	2016/9/12 12:30:00,0,1
2016/9/12 11:31:00,5,1	
2016/9/12 11:31:13,5,1	
2016/9/12 11:31:13,4,1	

By using a spreadsheet program to convert this CSV file into a scatter diagram, a graph of usage can be created as shown below.

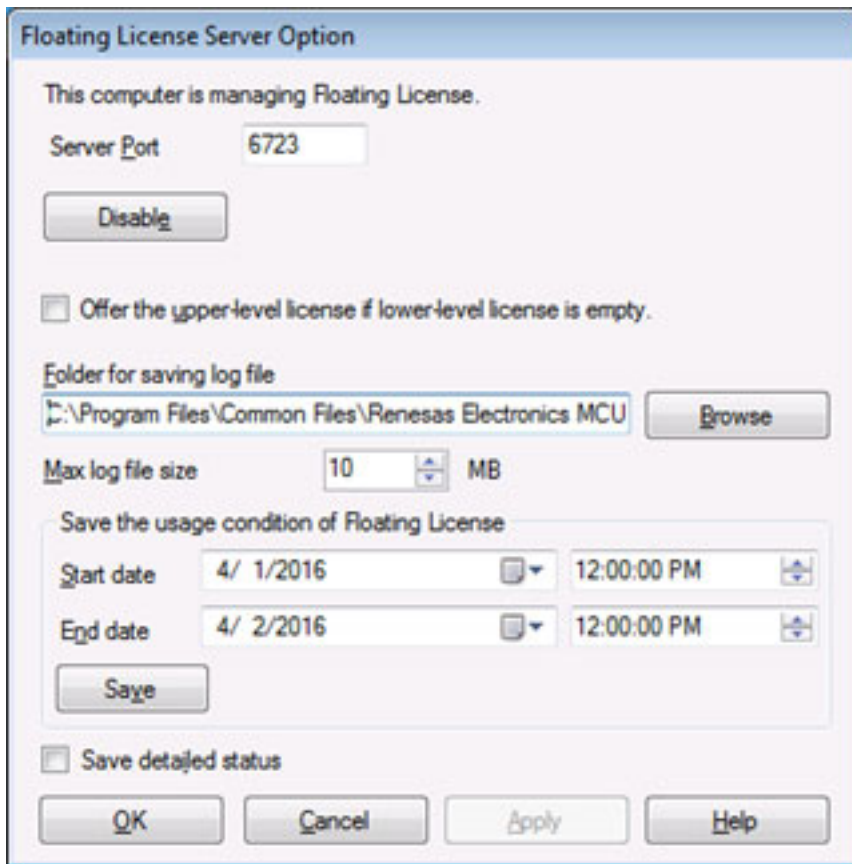
Figure 2.29 Scatter with Straight Lines Created by Microsoft Excel



### 2.3.9 Change options

Below is the description of other options of the floating license server.  
In the Floating License Server Administrator window, click the [Option] button.  
The Floating License Server Option dialog box will open.

Figure 2.30 Floating License Option Dialog Box



In this dialog box, the following options can be changed.

- [Offer the upper-level license if lower-level license is empty.] checkbox  
Specifies that the server allows the client to use an upper-level license (ex. Professional) when the client requests a lower-level license (ex. Standard) and the server has no available lower-level license, but has an available upper-level license.

If this is checked, the server responds to the client to request an upper-level license.

If this is unchecked, the server responds to the client by an error.

**Caution** This option must be selected in cases where only a higher-level license (e.g. Professional) is registered on the server but the client is requesting a lower-level license (e.g. Standard). This applies in cases such as where some compiler options which require the Professional edition license are not enabled. This option is de-selected by default in V1.00.00 to V2.01.00 of the floating license server but is selected by default in V2.02.00 and later versions.

- [Folder for saving log file] text box  
Specifies the path for the folder in which the log files are to be saved. If the [Browse] button is clicked, the folder can be specified in the Browse for folder dialog box.  
Logs are recorded with the numerical part of the file name changed for every 3 Mbytes with a file name of "FloatingLicense.xxx.log" (xxx is a 3-digit numerical value).
- [Max log file size] spin box  
Specifies the maximum size of log files. When recording a log immediately after the maximum size has been reached, the oldest log file is deleted to keep the file size within the size of this setting.
- [Save detailed status] checkbox  
If this is checked, the internal operations of programs are also recorded. If this is unchecked, only acquiring and releasing of licenses and their results are recorded.

## 2.4 Resetting When the Server Is Changed

When the server is to be changed due to a failure or replacement, follow the procedure shown in this document again to start up the server and register license keys.

All of the licenses acquired in the old server become invalid the moment the client connects to the new server.

## 3. MESSAGE

This chapter describes internal error messages, fatal error messages, abort error messages, information messages, choice messages and warning messages that Floating License outputs.

The message is output to the Message dialog box or log file, etc...

### 3.1 Message Types

The message types (1 alphabetic character) when Floating License is operated are as follows.

Table 3.1 Message Type

Message Type		Description
C	Internal error	Processing terminated (suspended) due to internal error.
E	Fatal error	Processing terminated (suspended) due to fatal error.
M	Information	Informational message. Check the message and continue the process.
Q	Choice	This type of message is displayed when a choice is necessary in order to carry on with the next operation. It performs the selected action.
W	Warning	Warning message. Check the message and continue the process.



### 3.2 Internal Errors

Table 3.2 Internal Errors

C0171000	[Message]	An internal error occurred. Failed to get a license. XXX
C0171001	[Message]	An internal error occurred. Failed to send license request. XXX
C0171002	[Message]	An internal error occurred. Failed to send license request.
C0171003	[Message]	An internal error occurred. Failed to respond to a license request. XXX
C0190000	[Message]	Specified device is invalid.
C0190001	[Message]	XXX is empty.
C0190002	[Message]	XXX is too large.
C0190003	[Message]	XXX is too small.

### 3.3 Fatal Errors

Table 3.3 Fatal Errors

E0172000	[Message]	Getting a license is timed out.
E0172001	[Message]	Command-line option is invalid.
E0172002	[Message]	Failed to load license file.
E0172003	[Message]	Failed to load option file. XXX
E0172004	[Message]	Failed to load option file. XXX
E0172005	[Message]	Failed to save option file. XXX
E0172006	[Message]	Failed to save option file. XXX
E0172007	[Message]	Failed to load license information. XXX
E0172008	[Message]	Server address or port settings is invalid. XXX
E0172009	[Message]	Failed to save license information. XXX
E0172010	[Message]	Server address or port settings is invalid. XXX
	[Action by User]	Check [Server Address] and [Port] in the option dialog box.

E0172011	[Message]	Failed to receive response from license server. XXX
	[Action by User]	Check [Server Address] and [Port] in the option dialog box.
E0172012	[Message]	Failed to save CSV file. XXX
E0172013	[Message]	No log file in log folder.
E0172020	[Message]	Response from license server is invalid.
	[Action by User]	Check [Server Address] and [Port] in the option dialog box.
E0172021	[Message]	Response from license server is invalid.
	[Action by User]	Check [Server Address] and [Port] in the option dialog box.
E0172022	[Message]	No available license in license server.
E0172023	[Message]	No available license in license server. But upper level license is available.
E0172024	[Message]	License server respond invalid server.
	[Action by User]	Disable the floating license in the option dialog box and enable it again.
E0172025	[Message]	License server respond invalid client.
	[Action by User]	Disable the floating license in the option dialog box and enable it again.
E0172026	[Message]	Clock gap between server and client is too large.
	[Action by User]	Check the client PC's clock. If the clock is correct, ask the floating license server administrator to check the server PC's clock.
E0172027	[Message]	License server respond unknown license.
	[Action by User]	The licence server version may be old. Ask the floating license server administrator to check the version of the floating license.
E0172028	[Message]	License is out of date.
E0172040	[Message]	Failed to connect license server. License server respond XXX.
	[Action by User]	Check [Server Address] and [Port] in the option dialog box.
E0172041	[Message]	A connection with the server has timed out.
	[Action by User]	<ul style="list-style-type: none"> <li>- Check [Server Address] and [Port] in the option dialog box. Ask the floating license server administrator to check that the service is running.</li> <li>- A request may be blocked by the server PC's firewall. Ask the floating license server administrator to check that the client request is allowed.</li> <li>- A request may be blocked by the client PC's personal firewall or other security software. Allow to conduct http and https communication.</li> </ul>

E0172042	[Message]	A connection with the server could not be established. Cannot find server or DNS error.
	[Action by User]	Check [Server Address] in the option dialog box. If this does not resolve the problem, please specify [Server Address] by the IP address.
E0172043	[Message]	Failed to connect license server.
	[Action by User]	Check [Server Address] and [Port] in the option dialog box. If this does not resolve the problem, ask the floating license server administrator to check that the service is running.
E0172044	[Message]	A connection with the server was denied.
	[Action by User]	Check [Server Address] and [Port] in the option dialog box.
E0172045	[Message]	The server returned an error (XXX).
	[Action by User]	Check [Server Address] and [Port] in the option dialog box.
E0172046	[Message]	A connection with the proxy server could not be established. Cannot find server or DNS error.
	[Action by User]	Check [Internet Option] in the control panel to bypass a proxy server. Ask your network administrator about proxy settings.
E0172047	[Message]	A connection with the proxy server could not be established.
	[Action by User]	Check [Internet Option] in the control panel to bypass a proxy server. Ask your network administrator about proxy settings.
E0174010	[Message]	Failed to load option file. XXX
E0174011	[Message]	Failed to save option file. XXX
E0174012	[Message]	Failed to load license information. XXX
E0174013	[Message]	Failed to save license information. XXX
E0174014	[Message]	Failed to start license service. XXX
E0174015	[Message]	Failed to receive request from client. XXX
E0174016	[Message]	Client request is invalid.
E0174017	[Message]	No available license.
E0174018	[Message]	No available license. But upper level license is available.
E0174019	[Message]	A request is send to invalid server.
E0174020	[Message]	A request is send from unknown client.
E0174021	[Message]	Clock gap between server and client is too large.
E0174022	[Message]	A request is required unknown license.
E0174023	[Message]	License is out of date.

E0174100	[Message]	This license key is invalid. XXX
E0174101	[Message]	This license key is already registered. XXX
E0174102	[Message]	Can not delete the license in use. XXX
E0180000	[Message]	This license key is invalid.
E0180001	[Message]	XXX This license key is already registered.
E0180010	[Message]	Failed to add the following license. To add an Upgrade (version) License, the license that is the source of the upgrade must be registered. XXX
E0180011	[Message]	Failed to delete the license. The license that is the source of the upgrade cannot be deleted before the Upgrade (version) License is deleted.
E0182000	[Message]	Could not write the license information to XXX.
E0190000	[Message]	Failed to start License Manager.
E0190001	[Message]	Failed to start License Manager. Can not find the folder to store the license information.
E0190002	[Message]	Managing the floating license server requires administrator privileges.

### 3.4 Information

Table 3.4 Information

M0190000	[Message]	Failed to read license information. The file is broken. Please re-enter license keys.
M0190010	[Message]	The version of the license manager you are using is older than that assumed by the floating license server. Update the license manager.
M0190011	[Message]	The version of the floating license server you are using is older than that assumed by the license manager. Update the floating license server.
M0191000	[Message]	Critical Error : XXX
M0191100	[Message]	Critical Error : XXX
M0191200	[Message]	Error : XXX
M0191300	[Message]	Error : XXX
M0191400	[Message]	Warning : XXX
M0191500	[Message]	Warning : XXX
M0191600	[Message]	Required license : XXX
M0191601	[Message]	Local license found.
M0191602	[Message]	Needs renewal.
M0191603	[Message]	Expired.
M0191604	[Message]	Invalid.
M0191605	[Message]	Released.
M0191606	[Message]	Upper level licesne : XXX
M0191607	[Message]	Get new licesne : XXX
M0191608	[Message]	Supported : XXX licenses
M0191700	[Message]	Request : XXX
M0191701	[Message]	Add client : XXX
M0191702	[Message]	Delete client : XXX
M0191703	[Message]	Client unknown.
M0191704	[Message]	Server id is invalid.
M0191705	[Message]	Target license is empty.
M0191706	[Message]	Upper level license is available
M0191707	[Message]	Assigned license (XXX/XXX) : XXX
M0191708	[Message]	Expired license : (XXX/XXX) : XXX
M0191709	[Message]	Released license : (XXX/XXX) : XXX
M0191800	[Message]	Command : XXX
M0191801	[Message]	Getting license : XXX
M0191802	[Message]	Connecting : XXX

M0191803	[Message]	Getting upper level license : XXX
M0191804	[Message]	Getting supported licenses : XXX
M0191805	[Message]	Getting license as offline mode : XXX
M0191806	[Message]	Releasing license : XXX
M0191900	[Message]	Starting service.
M0191901	[Message]	Starting HTTP listener.
M0191902	[Message]	Received HTTP request.
M0191903	[Message]	Received next request.
M0191904	[Message]	Getting license list.
M0191950	[Message]	Stop service.
M0191951	[Message]	Stop HTTP listener.
M0191952	[Message]	Bad HTTP request.
M0191953	[Message]	Unknown request.
M0191954	[Message]	Unkown client.
M0191955	[Message]	Invalid server ID.
M0191956	[Message]	Invalid : XXX
M0191957	[Message]	Released : XXX

### 3.5 Choices

Table 3.5 Choices

Q0174110	[Message]	This function should be used when a client cannot release a license because there was trouble in the client's PC. Normally, a license should be released from the client. Do you still want to continue?
----------	-----------	--

### 3.6 Warning

Table 3.6 Warning

W0190002	[Message]	Failed to read license information from XXX. The file is broken.
W0190003	[Message]	Failure in reading license information. The file is corrupted.



## Revision Record

Rev.	Date	Description	
		Page	Summary
1.00	Nov 01, 2020	-	First Edition issued

---

Floating License Server V2.04.00 User's Manual

Publication Date: Rev.1.00 Nov 01, 2020  
Published by: Renesas Electronics Corporation

---

# Floating License Server V2.04.00