

## ISL75051ASEHEV1Z

[ISL75051ASEH](#) is a high-performance, adjustable, low-voltage, high-current, low-dropout linear regulator specified at 3A rated output current for input voltages from 2.2V to 6V. The LDO outputs can be adjusted from 0.8V to 5V using two preset resistors.

The ISL75051ASEHEV1Z evaluation board provides a simple platform to evaluate the performance of the ISL75051ASEH. The same board can be used to evaluate the [ISL73051ASEH](#) which is the same die offered with different radiation assurance screening. The device output voltage is adjustable, and jumpers are provided to easily set popular output voltages. The device output voltage is adjustable, and jumpers are provided to easily set popular output voltages.

### What's Inside

The evaluation kit contains the following:

- ISL75051ASEHEV1Z evaluation board
- ISL75051ASEH datasheet
- This user manual

### Key Features

- TID, ELDRS, and SEE Rated
- Very fast load transient response
- $\pm 2.0\%$  guaranteed  $V_{OUT}$  accuracy over line, load, and temperature
- Typical dropout of 287mV at 3A
- EN, PG, and OCP features
- Short-circuit and over-temperature protection

### Specifications

- $V_{IN} = 2.2V$  to  $6.0V$
- Temperature range:  $-55^{\circ}C$  to  $125^{\circ}C$

### Related Literature

For a full list of related documents, visit our website

- [ISL75051ASEH](#) and [ISL73051ASEH](#) product pages

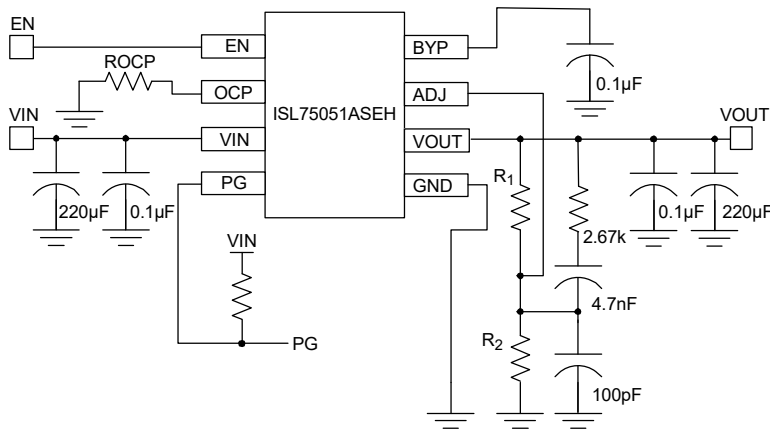


Figure 1. ISL75051ASEHEV1Z Simplified Schematic

## Contents

<b>1. Functional Description</b>	<b>3</b>
1.1 Operating Range	3
1.2 Quick Start Guide	3
1.3 Test Steps	3
1.4 Input and Output Capacitor Selection	4
1.5 Pole Capacitor ( $C_p$ )	4
<b>2. Board Design</b>	<b>5</b>
2.1 PCB Layout Guidelines	6
2.2 Thermal Guidelines	6
2.3 ISL75051ASEHEV1Z Schematic	7
2.4 Bill of Materials	8
2.5 Board Layout	10
<b>3. Typical Performance Curves</b>	<b>14</b>
<b>4. Ordering Information</b>	<b>16</b>
<b>5. Revision History</b>	<b>16</b>

# 1. Functional Description

Use the following information to optimize the performance of the ISL75051ASEH.

## 1.1 Operating Range

- $V_{IN}$  = 2.2V to 6.0V

## 1.2 Quick Start Guide

1. Configure the EN pin. Shorting JP11 disables the part, while leaving it open enables the LDO.
2. Set the OCP level.
  - a. Use the 2 resistor locations provided on the board to configure the OCP trip point.  $R_3$  and  $R_{14}$ , which are connected to JP8 and JP9, respectively.
  - b. JP9 is set to provide an OCP trip point of 6.7A, JP8 is set for a trip point of 1.2A.
3. Ensure that JP10 is shorted.
  - a.  $R_4$  (100 $\Omega$ ) is connected across the terminals of JP10. This is used for measuring the loop stability. Apply the AC signal across  $R_4$  using JP10 and use TP7 (VOUT) and TP12 (VOUT') for the measurement.
4. Short pins 2 and 3 of JP1.
5. Set the VOUT level by shorting JP2 – JP7.
  - JP2 – 0.8V
  - JP3 – 1.5V
  - JP4 – 1.8V
  - JP5 – 2.5V
  - JP6 – 4.0V
  - JP7 – Adjustable, use  $R_{13}$  (potentiometer) to set your required voltage.
6. Apply 5.0V between VIN and GND (J1 – J2)
7. Monitor VOUT using J3 – J4.
8. SP1 is a scope probe jack on VOUT for evaluating load step transients on VOUT.

## 1.3 Test Steps

9. Select the required output voltage by shorting one of the jumpers from J2 through J6. The option of JP7 provides for continuous adjustment of  $V_{OUT}$  using potentiometer  $R_{13}$ .
10. Set the OCP limit by using jumpers JP8 and JP9. JP9 = 0.8A min and JP8 = 4A min.
11. Close JP10. Also closing jumper JP1 (2 and 3) selects  $R_2$  = 5.49k as pull-up for PGOOD.
12. Ensure that the output capacitor and  $C_P$  are set according to recommended values shown in [Table 1](#).
13. Connect the input supply to VIN/GND and the load to VOUT/GND. Select the VIN to VOUT ratio to keep dissipation within the thermal limits of the device.
14. Use JP11 to enable/disable the IC; Open = Enable, and Close = Disable.  
*Note:* For REVB boards, Close = Enable and Open = Disable.

## 1.4 Input and Output Capacitor Selection

RH operation requires a combination of tantalum and ceramic capacitors to achieve a good volume-to-capacitance ratio. The recommended combination is a 220 $\mu$ F, 25m $\Omega$ , 10V DSSC 04051-032 rated tantalum capacitor in parallel with a 0.1 $\mu$ F MIL-PRF-49470 CDR04 ceramic capacitor. This is to be connected between  $V_{IN}$  to GND pins and  $V_{OUT}$  to GND pins of the LDO, with PCB traces no longer than 0.5cm. The stability of the device depends on the capacitance and ESR of the output capacitor. The usable ESR range for the device is 6m $\Omega$  to 100m $\Omega$ . At the lower limit of ESR = 6m $\Omega$ , the phase margin is about 51 $^\circ$ C. On the high side, an ESR of 100m $\Omega$  is found to limit the gain margin at around 10dB. The typical GM/PM seen on the ISL75051ASEHEV1Z evaluation board for  $V_{IN} = 3.3V$ ,  $V_{OUT} = 1.8V$ , and  $I_{OUT} = 3A$ , with a 220 $\mu$ F, 10V, 25m $\Omega$  capacitor, is GM = 16.3dB and PM = 69.16 $^\circ$ C.

## 1.5 Pole Capacitor ( $C_P$ )

A small capacitor ( $C_P$ ) can be placed on the ADJ pin of the ISL75051ASEH, as shown in [Figure 2](#), across the bottom resistor in the feedback resistor divider. This is effectively a pole. The value of the capacitor can be calculated using [Equation 1](#):

$$(EQ. 1) \quad F_P = 1/(2 \cdot \pi \cdot R_{BOTTOM} \cdot C_P)$$

The pole should be set to have the break frequency at 1MHz.

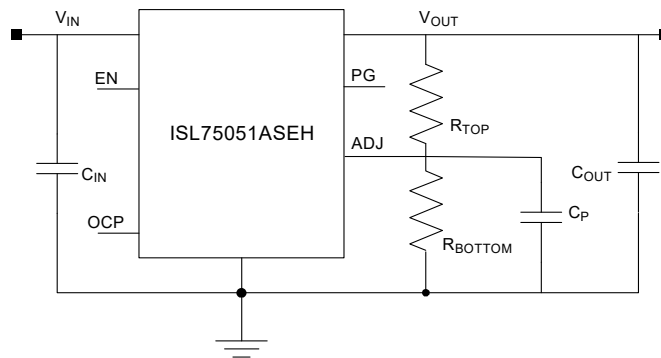


Figure 2. ISL75051ASEH Typical Application

[Table 1](#) gives the recommended values for output capacitors (MLCC X5R/X7R) and  $C_P$  for different voltage rails. Correct selection of the output capacitor and  $C_P$  also helps increase PSRR at high frequencies. The board, however, uses a 100pF capacitor as a typical value most suited for the application range.

Table 1. Recommended Output Capacitor Values

$V_{OUT}$ (V)	$R_{TOP}$ (k $\Omega$ )	$R_{BOTTOM}$ ( $\Omega$ )	$C_P$ (pF)	$C_{OUT}$ ( $\mu$ F)
5.0	4.32	499	120	220
4.0	4.32	634	120	220
2.5	4.32	1.13k	120	220
1.8	4.32	1.74k	100	220
1.5 <sup>[1]</sup>	4.32	2.26k	100	47
1.5	4.32	2.26k	100	220
0.8	4.32	7.87k	68	220

1. Either option can be used depending on cost/performance requirements.

## 2. Board Design

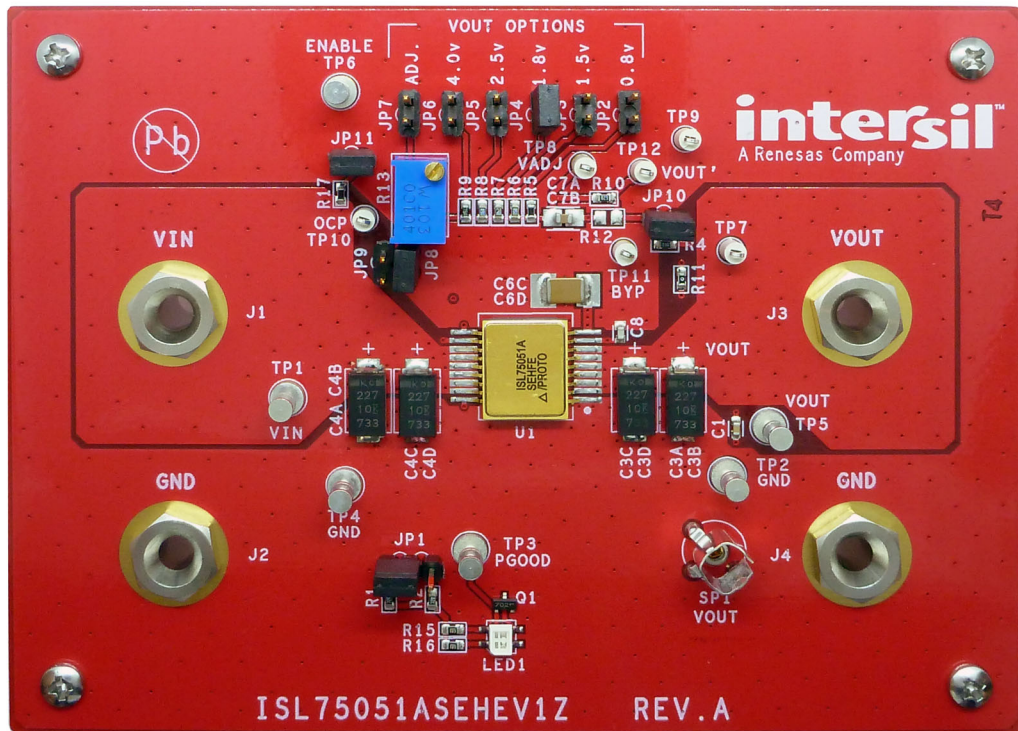


Figure 3. ISL75051ASEHEV1Z Evaluation Board, Top



Figure 4. ISL75051ASEHEV1Z Evaluation Board, Bottom

## 2.1 PCB Layout Guidelines

Good PCB layout is important for achieving expected performance. When placing components and routing traces, minimize ground impedance and keep parasitic inductance low. Give the input and output capacitors a good ground connection, and place them as close to the IC as possible. Route the traces connecting the ADJ pin away from noisy planes and traces, and keep the board capacitance of the ADJ net to GND as low as possible.

## 2.2 Thermal Guidelines

If the die temperature exceeds +175°C typical, then the LDO output shuts down to zero until the die temperature cools to +155°C typical. The level of power combined with the thermal impedance of the package ( $R\theta_{JC}$  of 4°C/W for the 18 Ld CDFP package) determines whether the junction temperature exceeds the thermal shutdown temperature specified in the “Electrical Specifications” table of the *ISL75051ASEH Datasheet*. Mount the device on a high-effective thermal conductivity PCB with thermal vias, per JESD51-7 and JESD51-5. Place a silpad between the package base and PCB copper plane. Select the  $V_{IN}$  and  $V_{OUT}$  ratios to ensure that dissipation for the selected  $V_{IN}$  range keeps  $T_J$  within the recommended operating level of 150°C for normal operation.



## 2.4 Bill of Materials

Qty	Reference Designator	Description	Manufacturer	Manufacturer Part
1		PWB-PCB, ISL75051ASEHEV1Z, REVA, ROHS	IMAGINEERING INC	ISL75051ASEHEV1ZREVAPC B
1	C7B	CAP-MILQUAL, SMD, 0805, 4700pF, 50V, 10%, BX, ROHS	VISHAY/VITRAMON	CDR01BX472AKMR
4	C1B, C5B, C6B, C6D	CAP-MILQUAL, SMD, 1812, 0.1µF, 50V, 10%, BX, ROHS	AVX	CDR04BX104AKMR
1	C8	CAP, SMD, 0603, 100pF, 50V, 10%, X7R, ROHS	KEMET	C0603C101K5RACTU
1	C1	CAP, SMD, 0603, 0.1µF, 16V, 10%, X7R, ROHS	MURATA	GRM39X7R104K016AD
0	C1A, C5A, C6A, C6C	CAP, SMD, 0603, DNP-PLACE HOLDER, ROHS		
0	C7A	CAP, SMD, 0805, DNP-PLACE HOLDER, ROHS		
4	C3B, C3D, C4B, C4D	CAP-TANT, SMD, 7.3x4.3, 220µF, 10V, 20%, 25mΩ, DF:10, ROHS	KEMET	T525D227M010ATE025
4	J1-J4	CONN-JACK, BANANA-SS-SDRLESS, VERTICAL, 0.53 Length, ROHS	JOHNSON COMPONENTS	108-0740-001
1	SP1	CONN-SCOPE PROBE TEST PT, COMPACT, PCB MNT, ROHS	TEKTRONIX	131-4353-00
6	TP1-TP6	CONN-TURRET, TERMINAL POST, TH, ROHS	KEYSTONE	1514-2
6	TP7-TP12	CONN-MINI TEST POINT, VERTICAL, WHITE, ROHS	KEYSTONE	5002
10	JP2-JP11	CONN-HEADER, 1x2, BRKAWY 1x36, 2.54mm, ROHS	BERG/FCI	68000-236HLF
1	JP1	CONN-HEADER, 1x3, BREAKAWY 1x36, 2.54mm, ROHS	BERG/FCI	68000-236HLF
11	JP1-Pins 1-2, JP2-JP11	CONN-JUMPER, SHORTING, 2PIN, BLACK, GOLD, ROHS	SULLINS	SPC02SYAN
1	LED1	LED, SMD, 3x2.5mm, 4P, RED/GREEN, 12/20MCD, 2V	LUMEX	SSL-LXA3025IGC-TR
1	U1	IC-RADHARD, CMOS 3A LDO REGULATOR, 18P, CFP, ROHS	INTERSIL	ISL75051ASEHFE/PROTO
1	Q1	TRANSISTOR-MOS, N-CHANNEL, SMD, SOT23, 60V, 115mA, ROHS	ON SEMICONDUCTOR	2N7002LT1G
1	R13	POT-TRIM, TH, 3P, 10k, 1/2W, 10%, 3/8SQ, 25TURN, TOPADJ, ROHS	BOURNS	3299W-1-103LF



## ISL75051ASEHEV1Z Evaluation Board Manual

Qty	Reference Designator	Description	Manufacturer	Manufacturer Part
0	R12	RESISTOR, SMD, 0805, DNP, DNP, DNP, TF		
1	R11	RES, SMD, 0603, 0Ω, 1/10W, TF, ROHS	VENKEL	CR0603-10W-000T
1	R4	RES, SMD, 0603, 100Ω, 1/10W, 1%, TF, ROHS	VENKEL	CR0603-10W-1000FT
1	R17	RES, SMD, 0603, 10k, 1/10W, 1%, TF, ROHS	VENKEL	CR0603-10W-1002FT
1	R8	RES, SMD, 0603, 1.13k, 1/10W, 1%, TF, ROHS	YAGEO	RC0603FR-071K13L
1	R7	RES, SMD, 0603, 1.74k, 1/10W, 1%, TF, ROHS	PANASONIC	ERJ-3EKF1741V
1	R6	RES, SMD, 0603, 2.26k, 1/10W, 1%, TF, ROHS	YAGEO	RC0603FR-072K26L
1	R10	RES, SMD, 0603, 4.32k, 1/10W, 1%, TF, ROHS		
1	R14	RES, SMD, 0603, 4.99k, 1/10W, 1%, TF, ROHS	PANASONIC	ERJ-3EKF4991V
1	R3	RES, SMD, 0603, 511Ω, 1/10W, 1%, TF, ROHS	VENKEL	CR0603-10W-5110FT
1	R1	RES, SMD, 0603, 549Ω, 1/10W, 1%, TF, ROHS	VENKEL	CR0603-10W-5490FT
1	R2	RES, SMD, 0603, 5.49k, 1/10W, 1%, TF, ROHS	VENKEL	CR0603-10W-5491FT
1	R9	RES, SMD, 0603, 634Ω, 1/10W, 1%, TF, ROHS	YAGEO	RC0603FR-07634RL
2	R15, R16	RES, SMD, 0603, 680Ω, 1/10W, 1%, TF, ROHS	ROHM	MCR03EZPFX6800
1	R5	RES, SMD, 0603, 7.87k, 1/10W, 1%, TF, ROHS	YAGEO	RC0603FR-077K87L
4	Four corners	SCREW, 4-40X1/4in, PHILLIPS, PANHEAD, STAINLESS, ROHS	BUILDING FASTENERS	PMSSS 440 0025 PH
4	Four corners	STANDOFF, 4-40X3/4in, F/F, HEX, ALUMINUM, 0.25 OD, ROHS	KEYSTONE	2204
1	Place assy in bag	BAG, STATIC, 6X8, ZIPLOC, ROHS	ULINE	S-2262
1	AFFIX TO BACK OF PCB	LABEL-DATE CODE_LINE 1: YRWK/REV#, LINE 2: BOM NAME	INTERSIL	LABEL-DATE CODE

## 2.5 Board Layout

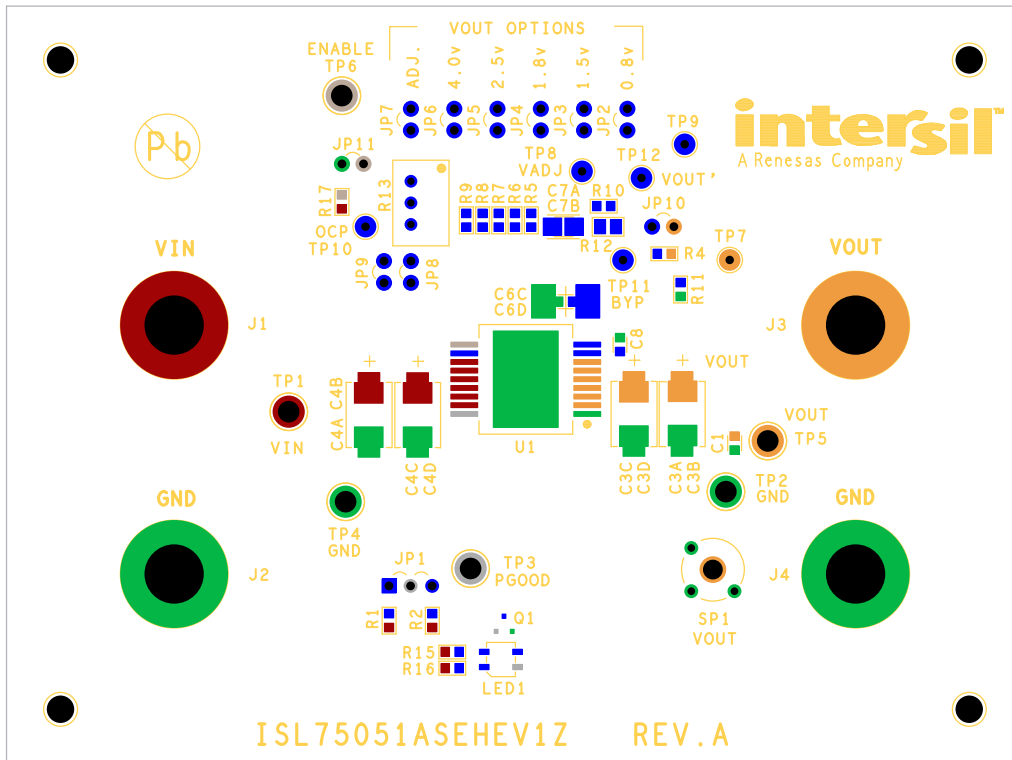


Figure 6. Silk Screen Top

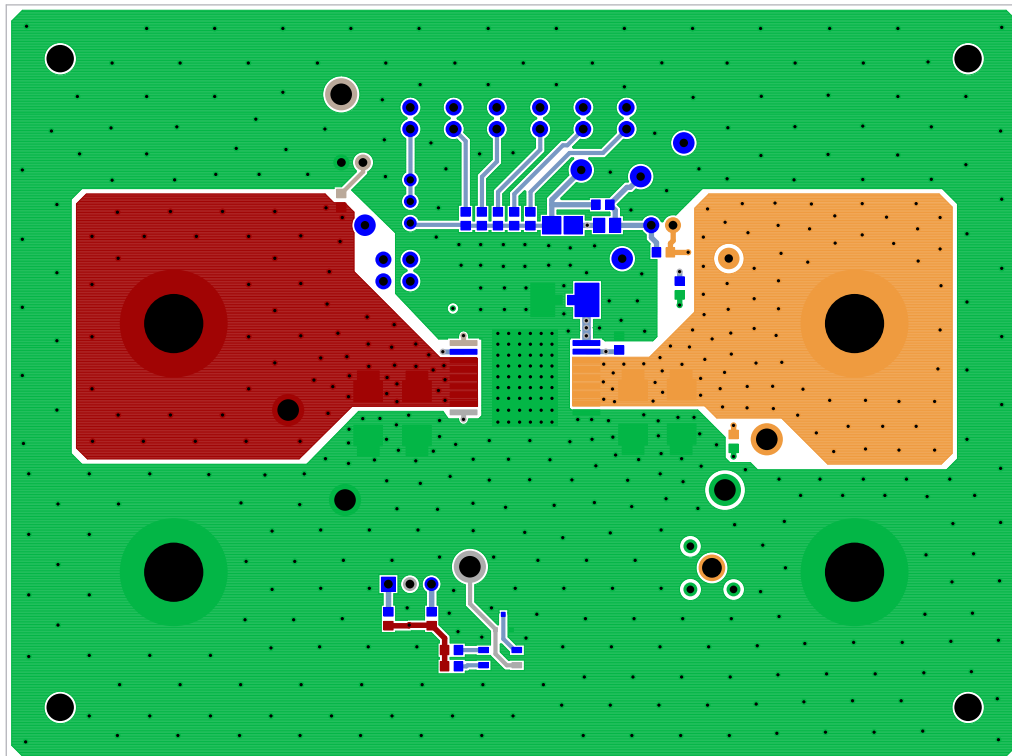


Figure 7. Top Layer Component Side

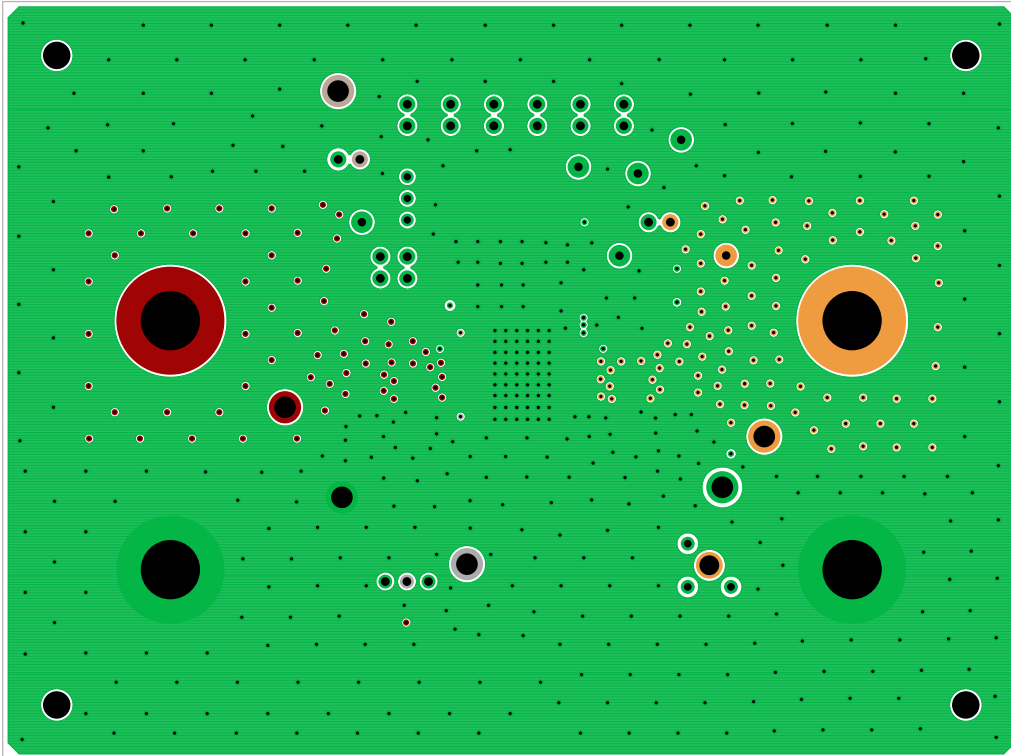


Figure 8. Layer 2

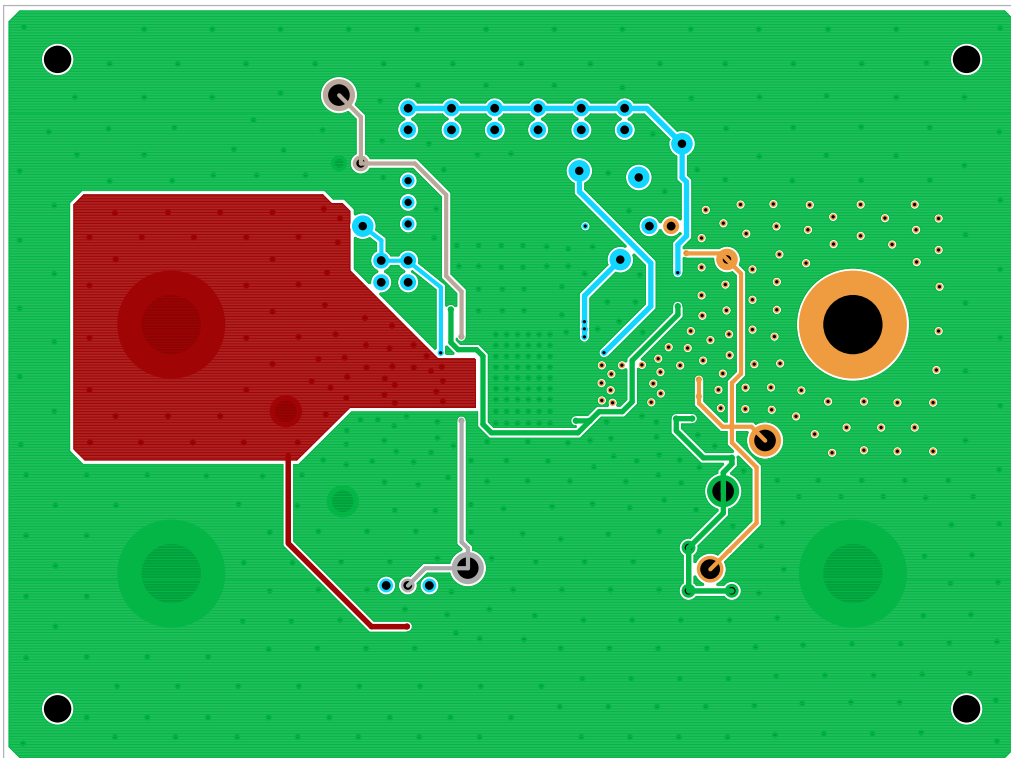


Figure 9. Layer 3

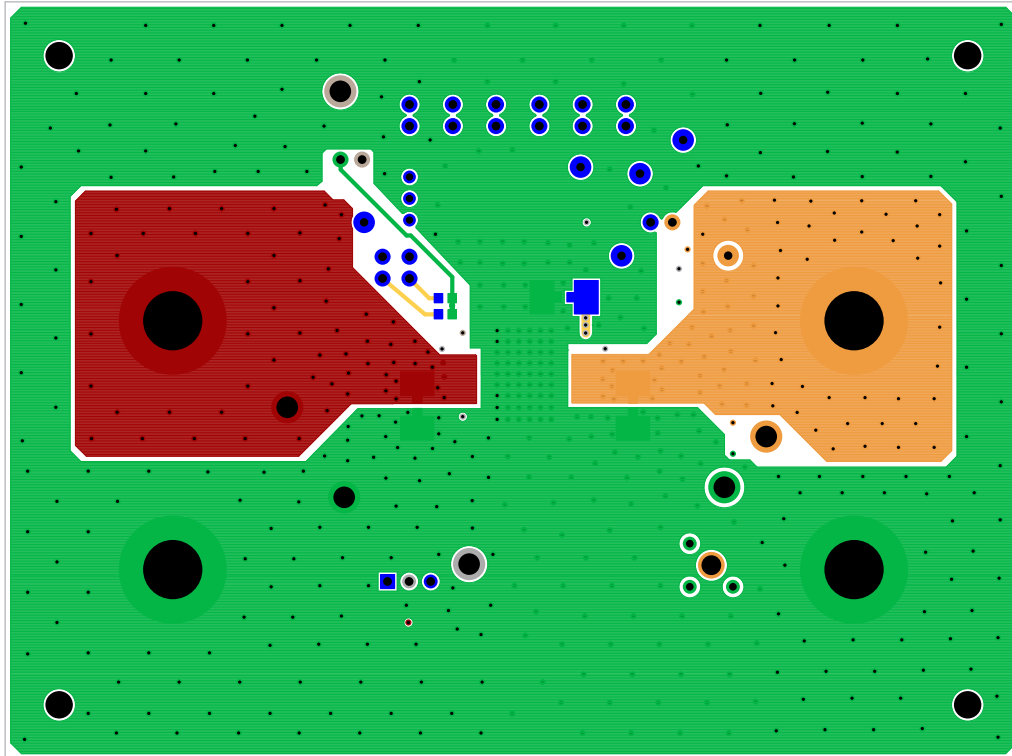


Figure 10. Bottom Layer Solder Side

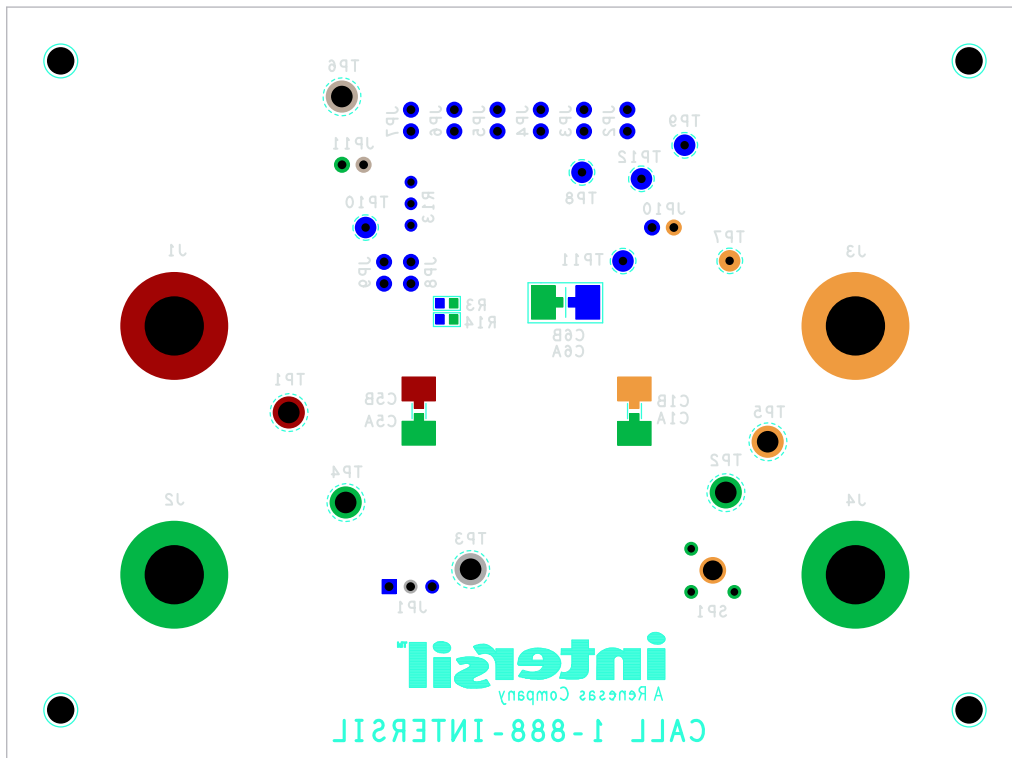


Figure 11. Silk Screen Bottom

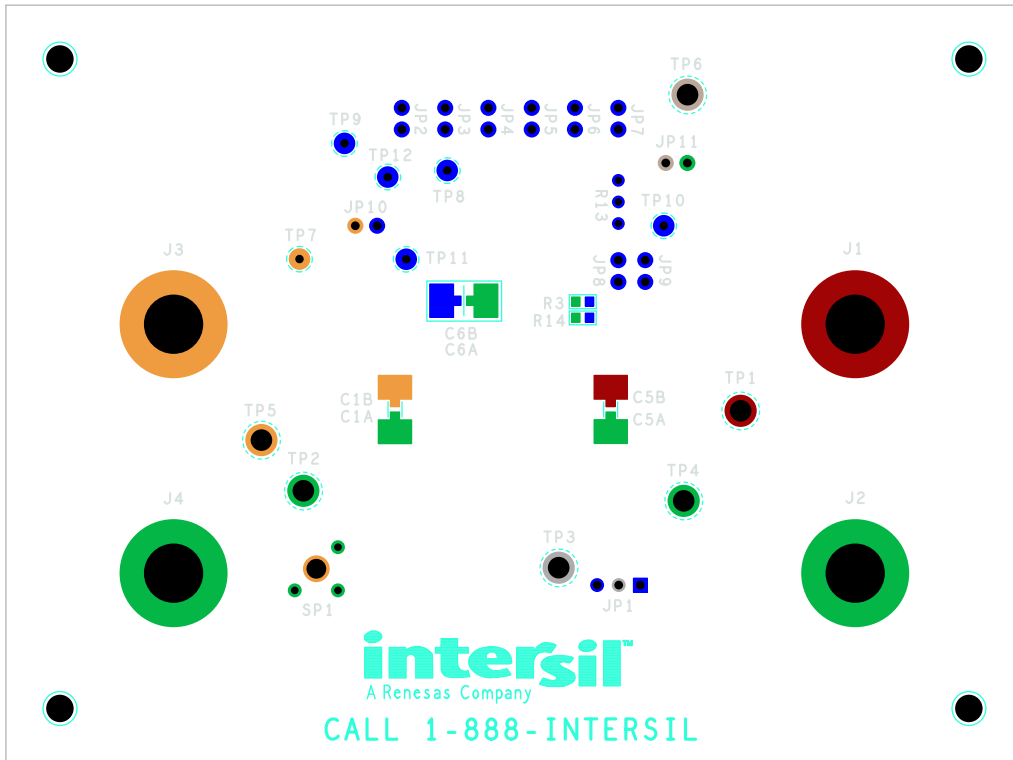


Figure 12. Silk Screen Bottom Mirror

### 3. Typical Performance Curves

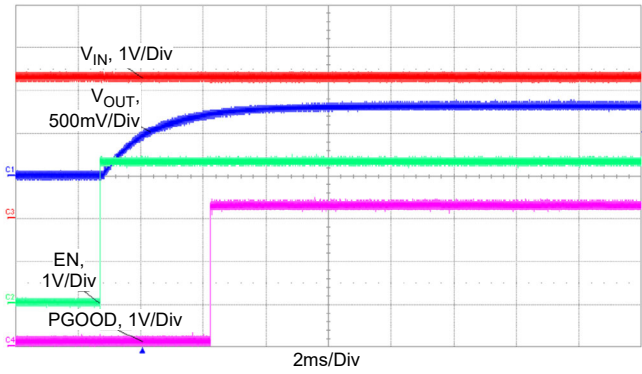


Figure 13. Start-Up Waveforms:  $V_{IN} = 6.0V$ ,  $V_{OUT} = 0.8V$ , EN Low to High

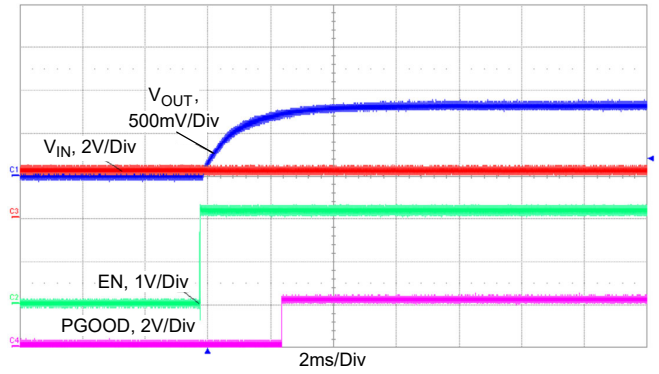


Figure 14. Start-Up Waveforms:  $V_{IN} = 2.2V$ ,  $V_{OUT} = 0.8V$ , EN Low to High

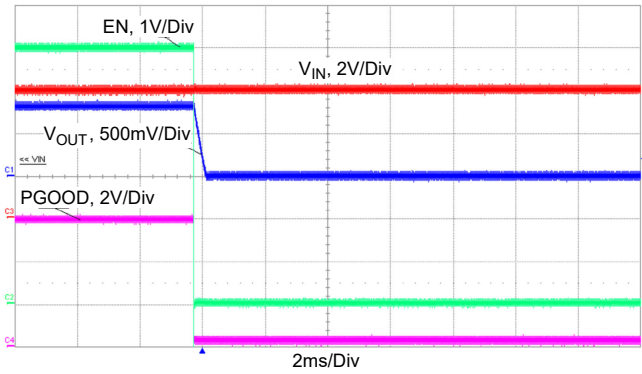


Figure 15. Shutdown Waveform:  $V_{IN} = 6.0V$ ,  $V_{OUT} = 0.8V$ , EN High to Low

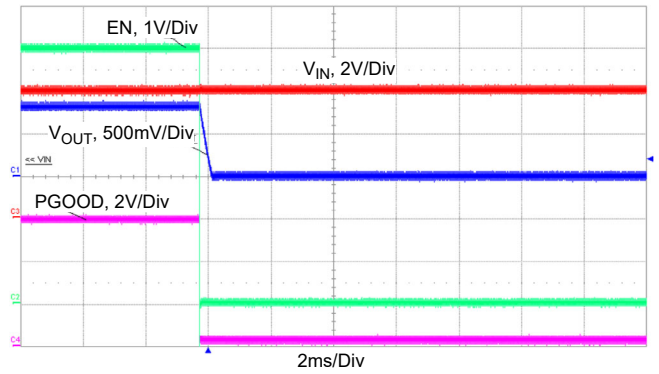


Figure 16. Shutdown Waveform:  $V_{IN} = 2.2V$ ,  $V_{OUT} = 0.8V$ , EN High to Low

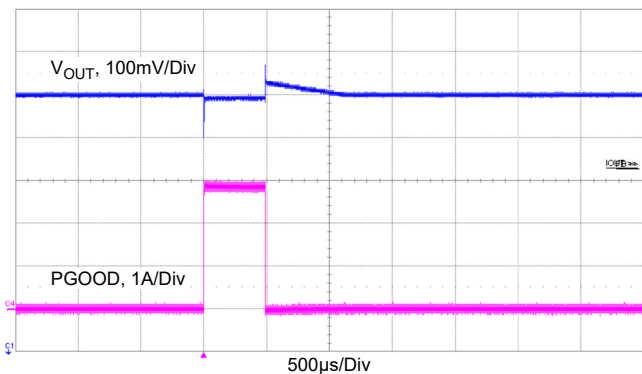


Figure 17. Load Transient,  $V_{IN} = 3.3V$ ,  $V_{OUT} = 2.5V$ ,  $C_{OUT} = 47\mu F$  35m $\Omega$

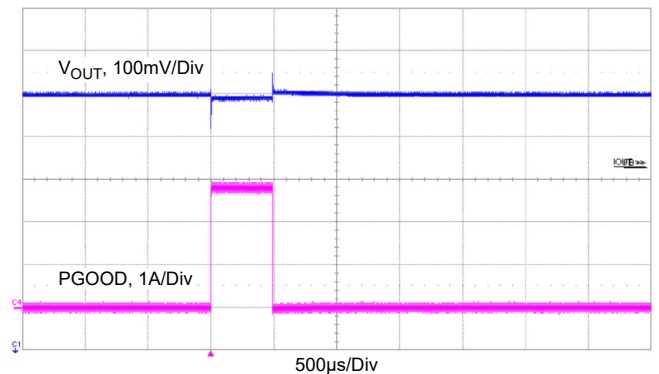


Figure 18. Load Transient,  $V_{IN} = 3.3V$ ,  $V_{OUT} = 2.5V$ ,  $C_{OUT} = 220\mu F$  25m $\Omega$

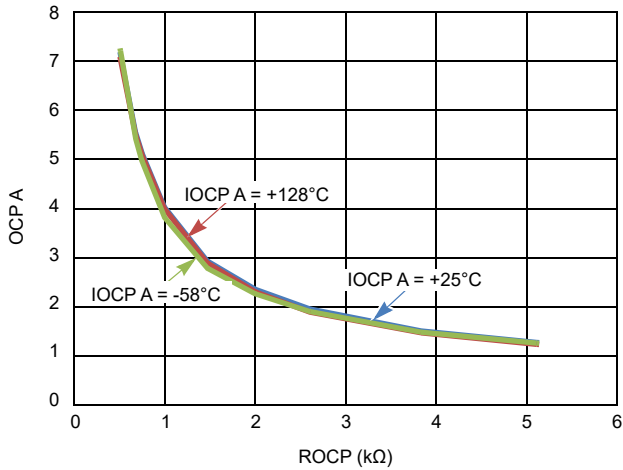


Figure 19. ROCP (kΩ) vs OCP A Over Temperature

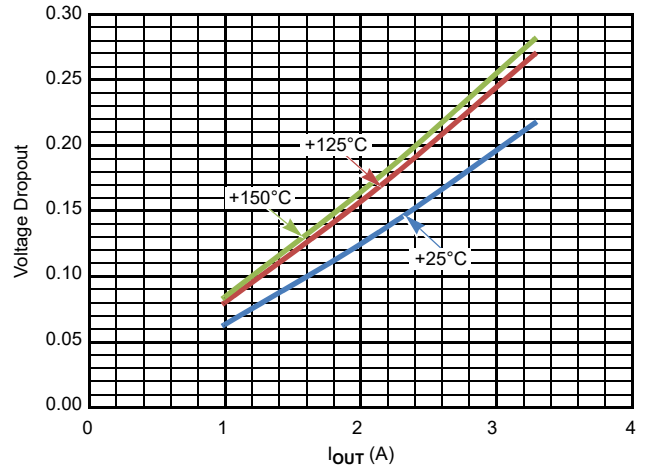


Figure 20. Dropout vs I<sub>OUT</sub>

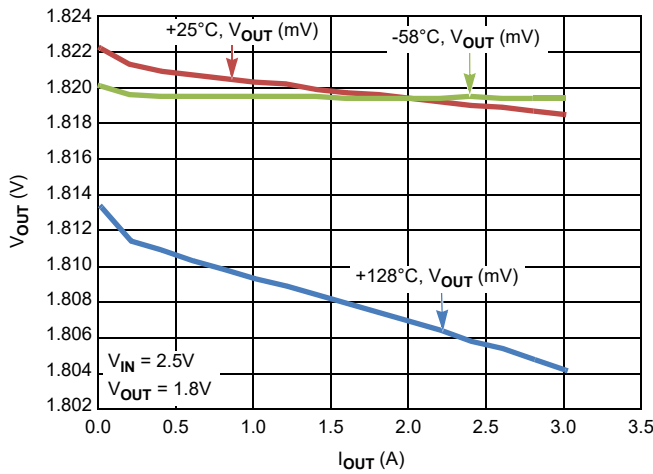


Figure 21. Load Regulation V<sub>OUT</sub> vs I<sub>OUT</sub>

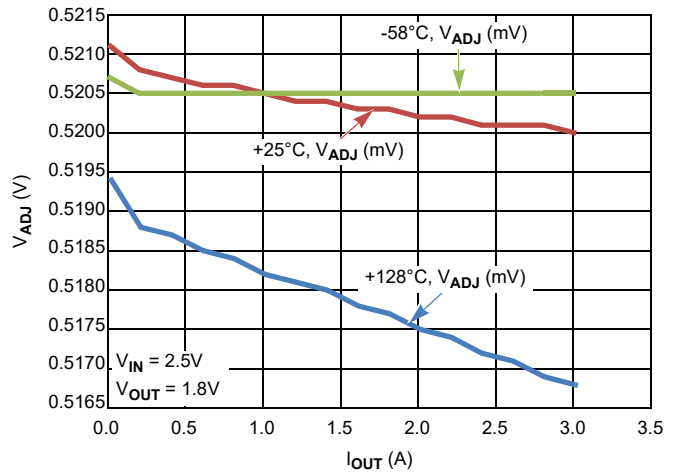


Figure 22. Load Regulation V<sub>ADJ</sub> vs I<sub>OUT</sub>

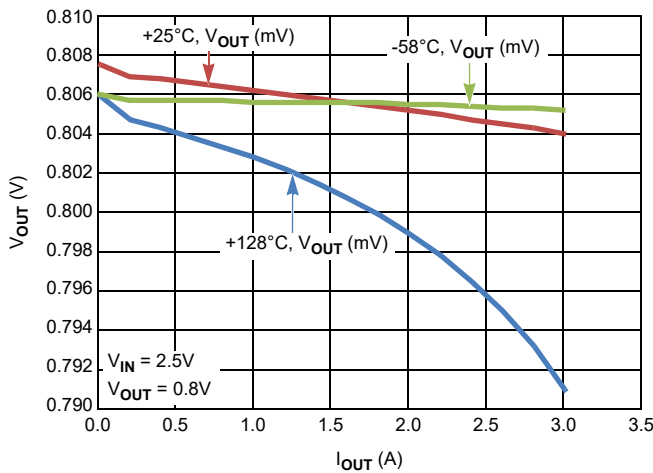


Figure 23. Load Regulation V<sub>OUT</sub> vs I<sub>OUT</sub>

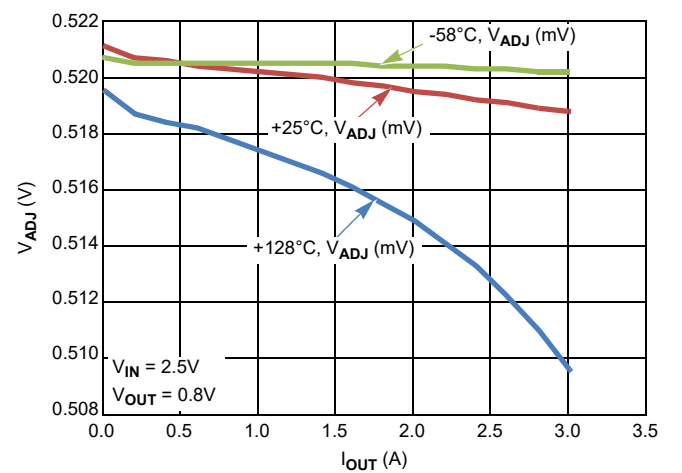


Figure 24. Load Regulation V<sub>ADJ</sub> vs I<sub>OUT</sub>

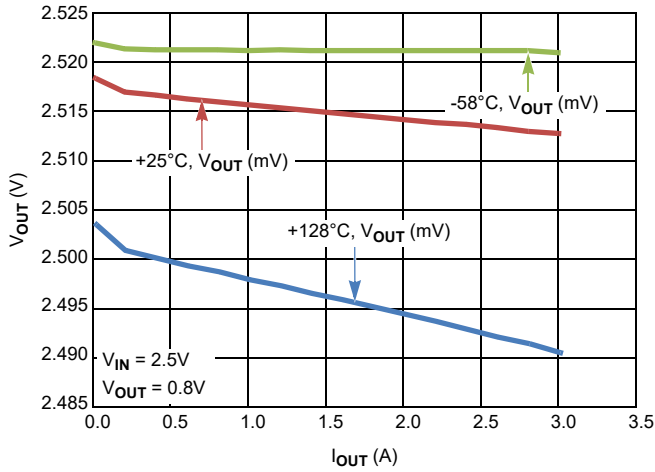


Figure 25. Load Regulation  $V_{OUT}$  vs  $I_{OUT}$

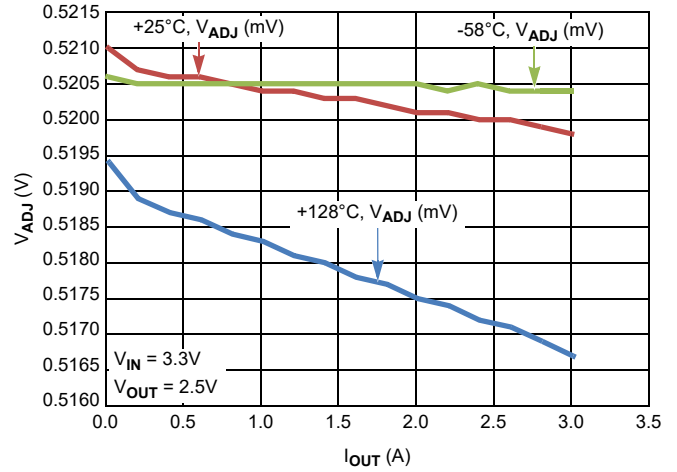


Figure 26. Load Regulation  $V_{ADJ}$  vs  $I_{OUT}$

## 4. Ordering Information

Part Number	Description
ISL75051ASEHEV1Z	ISL75051ASEH evaluation board

## 5. Revision History

Rev.	Date	Description
1.00	Jan 23, 2023	Applied new template. Updated page 1 description and related literature section.
0.00	Nov 29, 2017	Initial release



## IMPORTANT NOTICE AND DISCLAIMER

RENESAS ELECTRONICS CORPORATION AND ITS SUBSIDIARIES (“RENESAS”) PROVIDES TECHNICAL SPECIFICATIONS AND RELIABILITY DATA (INCLUDING DATASHEETS), DESIGN RESOURCES (INCLUDING REFERENCE DESIGNS), APPLICATION OR OTHER DESIGN ADVICE, WEB TOOLS, SAFETY INFORMATION, AND OTHER RESOURCES “AS IS” AND WITH ALL FAULTS, AND DISCLAIMS ALL WARRANTIES, EXPRESS OR IMPLIED, INCLUDING, WITHOUT LIMITATION, ANY IMPLIED WARRANTIES OF MERCHANTABILITY, FITNESS FOR A PARTICULAR PURPOSE, OR NON-INFRINGEMENT OF THIRD PARTY INTELLECTUAL PROPERTY RIGHTS.

These resources are intended for developers skilled in the art designing with Renesas products. You are solely responsible for (1) selecting the appropriate products for your application, (2) designing, validating, and testing your application, and (3) ensuring your application meets applicable standards, and any other safety, security, or other requirements. These resources are subject to change without notice. Renesas grants you permission to use these resources only for development of an application that uses Renesas products. Other reproduction or use of these resources is strictly prohibited. No license is granted to any other Renesas intellectual property or to any third party intellectual property. Renesas disclaims responsibility for, and you will fully indemnify Renesas and its representatives against, any claims, damages, costs, losses, or liabilities arising out of your use of these resources. Renesas' products are provided only subject to Renesas' Terms and Conditions of Sale or other applicable terms agreed to in writing. No use of any Renesas resources expands or otherwise alters any applicable warranties or warranty disclaimers for these products.

(Rev.1.0 Mar 2020)

### Corporate Headquarters

TOYOSU FORESIA, 3-2-24 Toyosu,  
Koto-ku, Tokyo 135-0061, Japan  
[www.renesas.com](http://www.renesas.com)

### Contact Information

For further information on a product, technology, the most up-to-date version of a document, or your nearest sales office, please visit:  
[www.renesas.com/contact/](http://www.renesas.com/contact/)

### Trademarks

Renesas and the Renesas logo are trademarks of Renesas Electronics Corporation. All trademarks and registered trademarks are the property of their respective owners.