

ISL94208EVZ

ISL94208 GUI

AN1893
Rev 0.00
October 24, 2013

Description

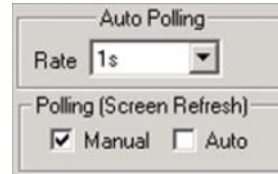
The ISL94208 Graphical User Interface (GUI) provides readout and control of all registers in the ISL94208, provides indicators of the pack status, a readout of cell voltages, a simple method of configuring the ISL94208 parameters and pack limits, and a mechanism for board calibration. See Figure 1.

System Operating Modes

There are two states for the GUI. One state provides for automatic polling of the ISL94208EVZ board. This polling occurs at preselected rates. The other (default) state provides for manual polling of the board under the control of the user.

There are also two states for the evaluation board microcontroller operation. In the default state, the microcontroller on the board automatically scans the ISL94208 every 256ms and makes decisions about the pack operation. The other state is a manual scan mode where the microcontroller on the board is not scanning the voltages and no pack decisions are made. In this mode the microcontroller is waiting for communication from the GUI.

Main Screen



POLLING

The user selects either Manual Polling or Automatic Polling mode using the Manual and Auto buttons (lower right of the screen.) The Auto Polling rate is selectable with refresh periods of 1s, 2s, 5s, and 10s. The auto scan updates all values in the main window and in the Monitor tab.

FIRMWARE VERSION

At the top of the screen (above the FET indicators) is the device part number and the version number for the microcontroller firmware on the board.

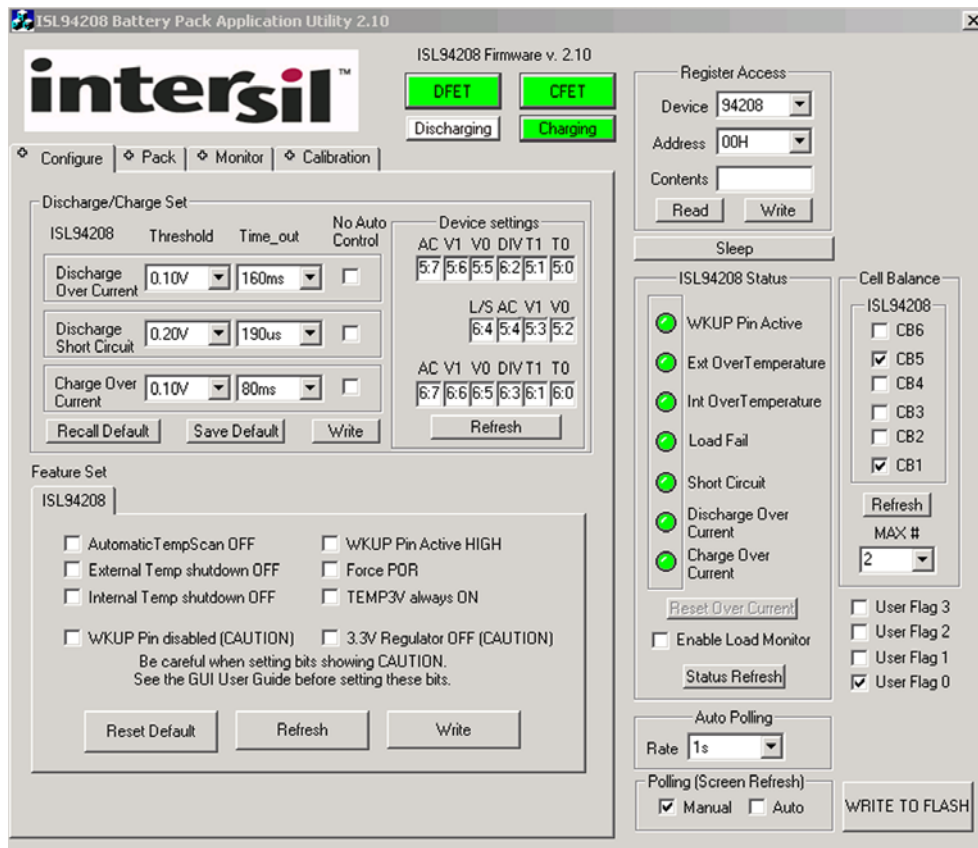


FIGURE 1. ISL94208 GUI MAIN AND CONFIGURE SCREENS

CFET/DFET

The CFET and DFET buttons show the status of the Charge FET and Discharge FET on the board. When the microcontroller is in the auto scan mode, these buttons are only indicators. Clicking on a button changes the color, but the microcontroller over-rides the setting. Check this by clicking on the “Status Refresh” button.

When the board is set for manual scan mode (select this mode by monitoring any single voltage, not ALL, in the Monitor Tab), the CFET and DFET buttons are not controlled by the microcontroller, allowing the FETs to be turned ON and OFF by the user in the system. Click on either of these buttons to turn the respective FET on or off. The Green light indicates that the FET is ON. The default state in manual scan mode is OFF. With the microcontroller running auto scan, the default state is ON (if all pack conditions are within normal operating limits).

CHARGE/DISCHARGE INDICATORS

Below the CFET/DFET buttons are the charging and discharging indicators. These glow GREEN when the hardware indicates that there is charge or discharge current.

To test charge/discharge operation requires a charge or load current across the sense resistors. A load current of up to 1A is needed between the B- terminal and P- terminal for the board to detect load current. A charge current of 250mA between B- and CHG- should be a high enough current for the evaluation board to detect. A good way to test this when applying the load or charger current is to set the GUI to Auto Polling mode so the status indicators are automatically updated. In Manual Polling mode, it is necessary to periodically click on the “Status Refresh” button.



REGISTER ACCESS

The register access box allows the user to select the address to read and write. During a read, the value is returned in the “Contents” window. During a write, the value in the “Contents” window is sent to the device at the address specified. The operation takes place when the read or write buttons are pressed.

The GUI is set up to handle a single ISL94208EVZ evaluation board.

Note that when using this Register Access, and writing to registers 5, 6, and 7 of any device, a write must first be made to register 8 to set an enable (80H). Then, once the write is complete, register 8 should be reset to prevent accidental writes.

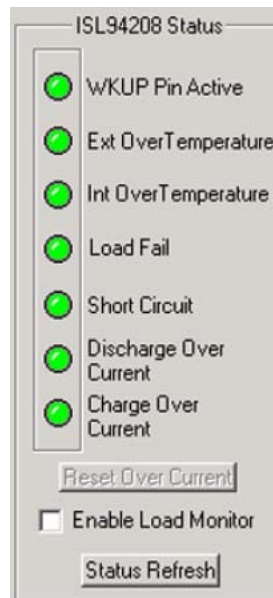
Do not write to registers 9H or AH.

SLEEP BUTTON

A sleep button (below the Register Access controls) has been added to the GUI. Clicking on this button causes the microcontroller to put the pack to sleep. To wake the pack it is necessary to do one of the following:

- Press the WKPO_L button (WKPOL = 0; default).
- Press the WKPO_C button (WKPOL = 0; default).

- Press the WKP1 button (WKPOL = 1).
- Connect a charger to the board between VBAT and CHG-.
- Connect a load to the board between VBAT and P-.



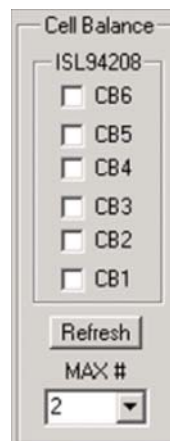
STATUS

The status box is simply a graphical representation of the contents of the two status registers of the ISL94208. In auto scan, these values are updated at the scan rate. In a manual scan, they are updated when the refresh button is pressed.

In this area is also a box that allows the user to turn on or off the load monitor function of the ISL94208. When the box is checked, the load monitor is on.

The “Reset Over Current” button in this area clears the discharge overcurrent, charge overcurrent, and short circuit flags after one of these events occurs. This latch is part of the microcontroller code on

the evaluation board and the GUI. It is not part of the ISL94208 functionality. Without the latch, these indicators do not stay on long enough after an event for the user to detect. This is because the FETs open in response to the overcurrent event. Once the FETs open, the overcurrent condition goes away and the ISL94208 devices immediately clear the overcurrent indicator bit in the device. When the microcontroller is operating, it manages the overcurrent conditions.



CELL BALANCE

In the cell balance block, the status of the cell balance outputs are shown, plus the user has control of turning cell balance outputs ON or OFF. A change to the cell balance output occurs immediately on clicking on one of the cell balance boxes.

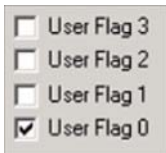
There is a box that limits the number of cells that can be balanced at the same time. When this limit is reached, all other cell balance controls are disabled.

When the microcontroller is operating and running automatic scan operations and controlling the pack, the user can still turn ON or OFF any of the cell balance outputs.

When the automatic cell balance routine is being executed by the microcontroller, the “Refresh” button updates the screen indication of which balance outputs the microcode algorithm has turned on or off. These cell balance indicators are also updated when the automatic polling is active.

The cell balance routine is always active. However, balancing does not start unless all conditions allow it. The primary limit to cell balance is that balance only happens when balancing is set to balance during charging and a charge current is detected by

the hardware. This is the default condition. The board can also be set to balance during discharge when the board detects a discharge current. This setting is controlled in the Pack tab (see “Pack TAB” on page 5).



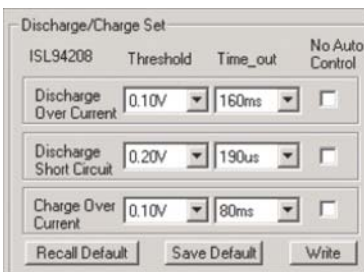
USER FLAGS

There are 4 buttons on the main screen to indicate the status of four user flags in the ISL94208. These simply control and indicate the condition of four bits in the device register space. When the microcontroller powers up, it

sets User Flag 0 to indicate that the code has been installed and is operating. The other three tabs are for general purpose use.

Tabbed Selections

There are four tabs on the main window. These are Configure, Monitor, Pack, and Calibration.



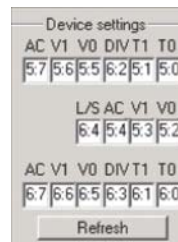
CONFIGURE TAB

The Configure tab provides simplified on-screen access to the configuration registers of the ISL94208. These registers are also controlled by the Register Access block, but the Configure Tab shows real values, making it easier to make selections.

The discharge and charge thresholds and time-outs are selected by drop down menus, which have all of the settings in one drop down menu, even though the settings span multiple bits and even multiple registers. For example: the Discharge Over Current time-out setting shows 2.5ms, 5ms, 10ms, 20ms, 160ms, 320ms, 60ms, and 1280ms. The value is set by programming bits 5 and 6 in register 05H and bit 2 in register 06H. The auto control bit for Discharge Over Current is set by bit 5 in register 05H.

When “Write” is pressed, the values for all configuration registers and the Auto Control bits are written to the ISL94208. This entire procedure includes setting the enable bits in register 08H prior to writing the individual values and resetting the write control bits when the operation is over. This procedure is also used for changing the threshold levels and the other time out conditions.

Note: It appears that in Rev 2.01 of the GUI code, the software does not properly set the write enable bits in register 08H prior to changing the configuration values. To more reliably change the configuration, write E0H to register 08 prior to writing the new configuration values. To be sure of the configuration setting, click on the Refresh button to read back the value in the ISL94208.



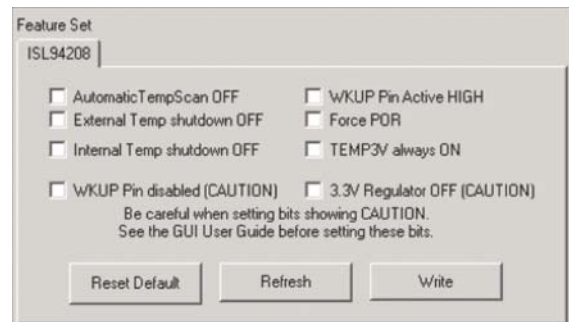
At the conclusion of the write operation, the registers are read and the settings returned from the ISL94208 are displayed in the “Device Settings” area. This display is a simple binary representation of the registers. During an auto-polling operation, these values are automatically updated.

In each of the device settings bits, there is a value that shows where the bit is located. For example, the T0 bit for Discharge Over Current is labeled as 5:0. This means that the bit is in register 5, bit 0. The device status display is read only.

The normal default setting is “all bits equal to zero.” Clicking on “Recall Default” sets all of the bits to zero. Next, clicking on “Write” loads the values into the device.

There may be cases where other default values are desired. If so, the user can click on “Save Default.” This stores (in the GUI program) the current settings of the configuration registers. (This is a volatile setting, which is lost when the GUI is closed.) After clicking on “Save Default” these are the configuration values that will be recalled when clicking the “Recall Default” button.

In either manual or automatic polling, clicking the “Refresh” button processes a read of the device and the values are updated based on the settings of the ISL94208.



Also in the configure tab is a screen for setting the feature bits. The check boxes indicate the current setting of the bit and allows a change to be made. The box is checked if the feature is active.

As with the Charge/Discharge parameters, it is recommended to write E0H to Register 08H prior to changing any of these settings. Clicking on a setting two times (leaving enough time for the command to complete) also works. To be sure about the setting, click on Refresh to read back the status of the ISL94208.

For bits labeled “CAUTION”, the user is advised to consider the response to system operation when these bits are set.

- Clicking on the “3.3V Regulator OFF (CAUTION)” button turns off the ISL94208 regulator, which turns off the microcontroller as well as some functions within the ISL94208. This bit should only be set if there is an external 3.3V supply connected to RGO.
- Clicking on the “WKUP pin disabled” will turn off the wake up circuit of the ISL94208. If the part goes to sleep with this bit set, the device cannot be waken by hardware. The only way to wake the part in this case is to supply an external RGO and use an I²C command to reset the bit.

The “Refresh” button re-reads the register and sets the check boxes accordingly. The “Reset Default” button clears the check boxes to reset the device default values. This does not write the

values to the device until the “Write” button sends the screen values to the ISL94208.

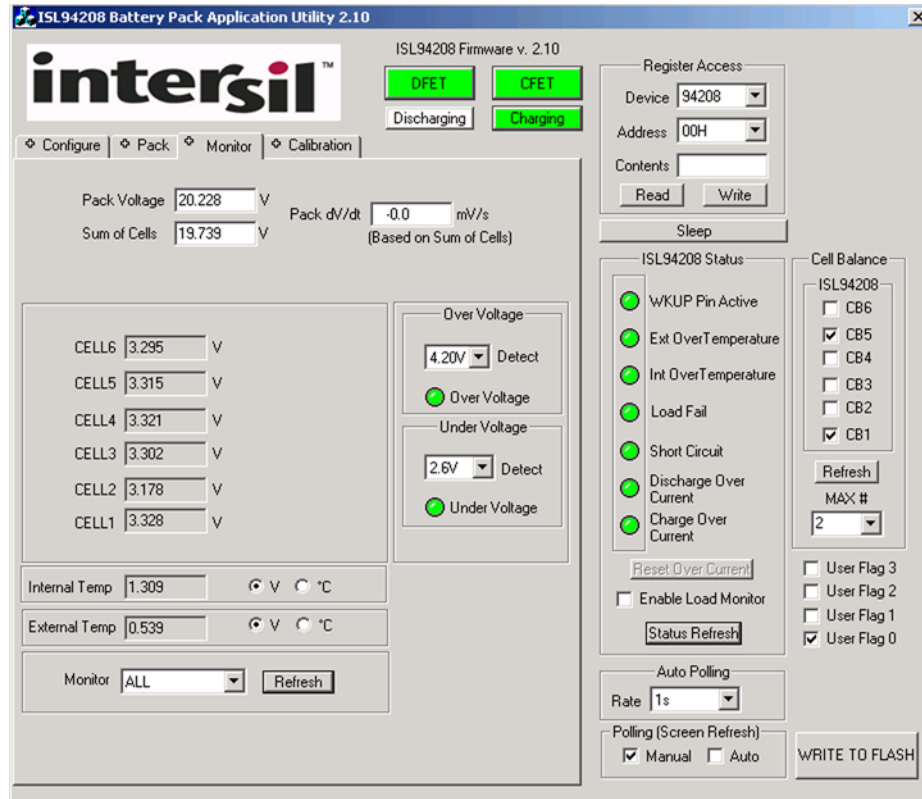


FIGURE 2. ISL94208 GUI WITH MONITOR TAB

MONITOR TAB

CELL6	3.295	V
CELL5	3.315	V
CELL4	3.321	V
CELL3	3.302	V
CELL2	3.178	V
CELL1	3.328	V

The monitor tab provides information on the analog voltages returned from the board. This reading is based on the AO of the ISL94208. The AO voltage is converted to digital by the 10-bit A/D converter in the microcontroller.

Internal Temp	1.309	V °C
External Temp	0.539	V °C

The internal and external temperatures are to be reported as either a voltage or a temperature.

The user chooses which units are to be displayed. In the case of internal temperature, the temperature value is calculated (converted from voltage to °C) using data sheet values for +25 °C(1.31V) and the voltage/temperature slope (-3.5mV/°C.)

The calculation for internal temperature is:

$$C = 85 + (\text{intTempVoltage} - 1.1) / (-0.0035) \quad (\text{EQ. 1})$$

Where intTempVoltage is the internal temperature value converted from the ISL94208 AO output. Note, the AO output is 1.1V at +85 °C.

For the external temperature, the conversion is based on the values of the resistor divider on the board, the RGO voltage, and a table of values for a typical thermistor from Murata.

The calculation for external temperature is:

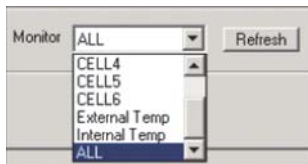
$$R = (46400 \times \text{extTempVoltage}) / (3.3 - \text{extTempVoltage}) \quad (\text{EQ. 2})$$

Where 46400 is the value of the top resistor in the divider, R is the resistance of the thermistor, and extTempVoltage is the external temperature value converted from the ISL94208 AO output.

The “R” value in the equation is then divided by 1000 and compared to Resistance values in Table 1 to get the corresponding temperature value. The GUI algorithm does a linear interpolation between two points to get the final result.

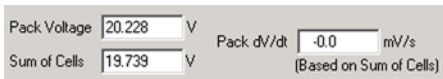
TABLE 1. EXTERNAL TEMPERATURE LOOKUP TABLE

TEMPERATURE (°C)	RESISTANCE (kΩ)	TEMPERATURE (°C)	RESISTANCE (kΩ)
-20	68.2	35	6.95
-15	53.6	40	5.83
-10	42.5	45	4.92
-5	33.9	50	4.16
0	27.2	55	3.54
5	22	60	3.01
10	17.9	65	2.59
15	14.7	70	2.23
20	12.1	75	1.92
25	10	80	1.67
30	8.31	85	1.45



The user can select to Monitor “ALL” voltages or only a specific cell or temperature. When monitoring only one voltage, that voltage is constantly placed on the AO of the ISL94208, making it easy to monitor the

cell voltages with a meter. In Monitor “ALL”, the voltages are sequentially obtained and automatically updated in the microcontroller. The values in the Monitor screen update when clicking the Refresh button. The values are automatically updated when Auto Polling is selected.

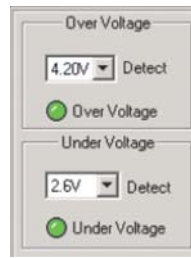


The monitor tab shows two pack voltage values. The top one, Pack

Voltage, is obtained by the microcontroller from hardware on the board. The ISL94208EVZ evaluation board is equipped with a switched voltage divider ($\div 16$) that the software uses to read the pack voltage. The Pack Voltage window shows a voltage equal to 16 times the voltage from the divider.

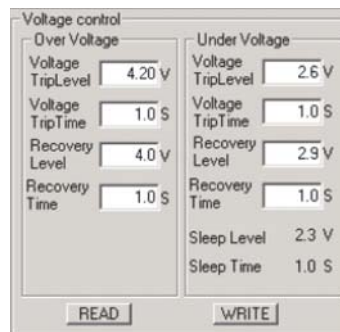
The “Sum of Cells” value in the Monitor Tab shows the sum of all voltages shown for the active cells. Both are included to give an indication of the performance of the board.

The dV/dt indicator in the monitor window shows the change in the “Sum of Cells” over time. It detects the difference in the reading every Automatic Polling cycle and shows the result in mV/s. The value is for indication only, as there is no functionality tied to it. The purpose was to give the user the ability to experiment with various charge and discharge algorithms.



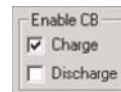
The monitor window also shows an Over Voltage and Under Voltage indicator. By default, these are set to the same values as programmed into the microcode on the ISL94208EVZ evaluation board (see board thresholds in “Pack TAB” on page 5). Otherwise, these values are not associated with the overvoltage or undervoltage conditions on the ISL94208EVZ board. If the settings are kept at the same thresholds as the on the board, then these provide simple visual indicators that the voltage has exceeded an overvoltage level or dropped below an undervoltage level to verify that the ISL94208 board is at or near a threshold level. The indicators are normally green, but show red in a fault condition.

PACK TAB

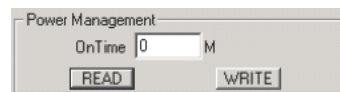


This tab provides inputs to the microcontroller for setting battery pack parameters controlling the operation of the pack by the microcode. The use of these parameters by the microcontroller are detailed in the “ISL94208 Microcode Reference Guide.”

These values are updated on the screen with the various “read” buttons and any changed values are written back to the microcontroller by the “Write” buttons. The write button stores the value back to the microcontroller and the values are saved only in RAM.



The Cell balance window of the Pack Tab allows the user to set the pack such that balancing will not happen, will happen during charge, will happen during discharge, or will happen during both charge and discharge. Balancing only happens if the board detects that current is flowing (and in the proper direction). There is no balancing if a box is checked, but there is no current detected.



The Pack tab also has a Power Management window. This allows the user to set a time, from 1 to 15 minutes

for the pack to go to sleep when there is no current detected flowing into or out of the pack. When the value is “0”, the pack does not go to sleep.

The Sleep Level is “hard coded” in the software to be 2.3V and the sleep time is hard coded to be 1.0s.

Since the GUI changes for Pack parameters are made in the microcontroller RAM, inducing a sleep mode on the ISL94208 causes these values to be lost when the microcontroller is turned OFF. The “Write to Flash” button in the main window allows the user to store changes back to the microcontroller Flash for permanent storage. (The procedure is described in section “Cell balance min/max” on page 8).

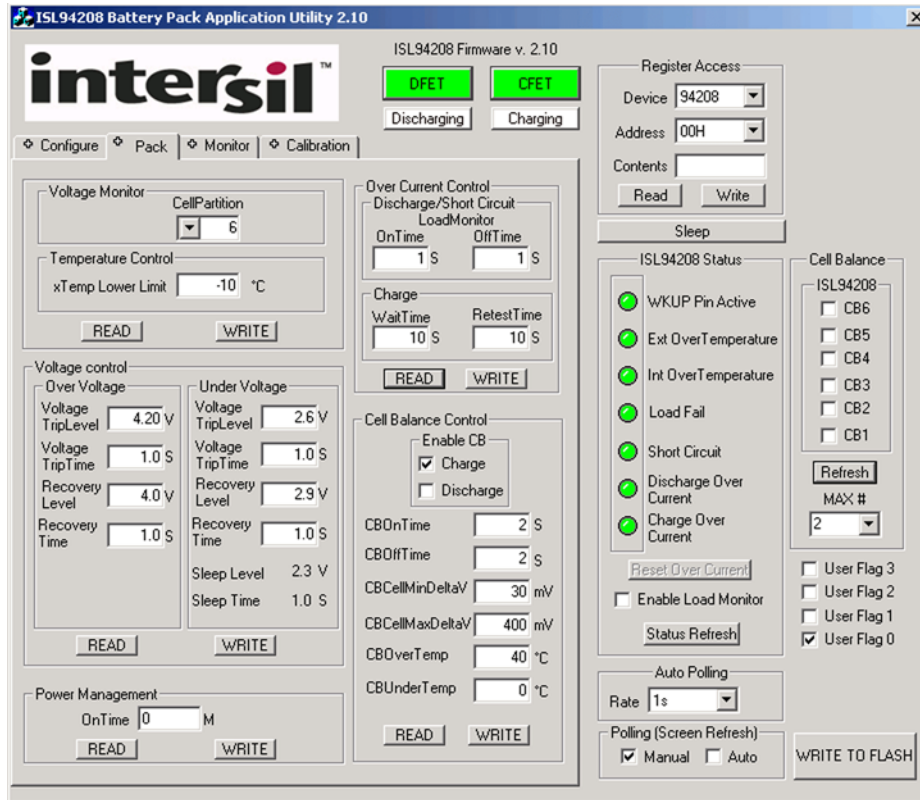
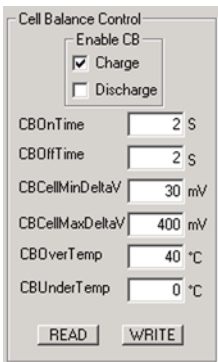


FIGURE 3. ISL94208 GUI WITH PACK TAB



The Pack Tab also contains settings for the Cell Balance Control. As with the other sections, the values are read from the microcontroller with the “Read” button and written to the microcontroller with the “Write” button.

The cell balance control values are the Cell balance on and off times, the minimum voltage differential required before a cell is balanced, the maximum deviation between the lowest and highest voltage cell, and temperature limits on the balancing.

More information about the balancing operation is presented in “ISL94208 Cell Balancing” on page 8.

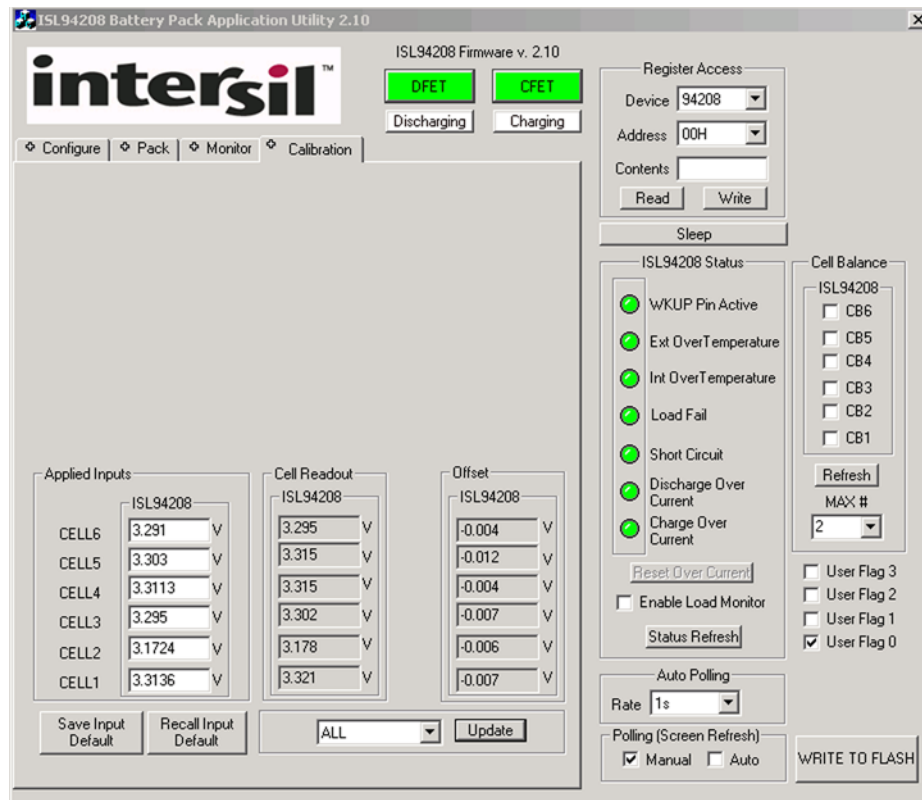


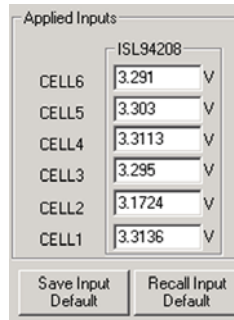
FIGURE 4. ISL94208 GUI WITH CALIBRATION TAB

CALIBRATION TAB

The configuration Tab input column allows the user to define the voltage at which the board is calibrated. This single point calibration provides very good accuracy. It is usually performed at a critical voltage, such as at a voltage comparable to the “flat” part of a discharge curve or near the overvoltage detection.

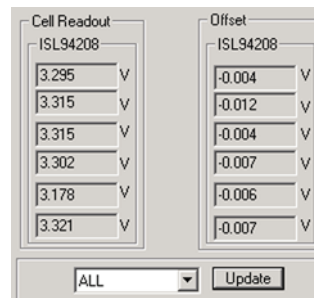
The GUI powers up with a default input voltage of 3.3V, so the user could apply a power supply with exactly 3.3V per cell to perform the calibration. However, getting a supply that can support 6 input cells to near 1mV accuracy is often difficult. Instead, the user can provide a supply that is close to the desired voltage and use a meter to provide an accurate measurement of the input voltage for calibration (as shown in Figure 4).

The input voltage can be measured at the pins of the evaluation board or at the terminals of a battery stack or power supply. Normally, the voltage at the pins of the board is the preferred method for repeatability in manufacturing.



Saving the Applied Input Values

During calibration of multiple boards, the measurement of input values can be performed once, then saved using the “Save Input Default” button in the Configuration Tab. This saves the data to a “.civ” file. For the second and subsequent boards, if the supply voltages do not change, then the previously entered power supply voltages can be loaded using the “Recall Input Default” button to load the previously saved “.civ” values.



Programming the offset

Once the input voltages are entered into the GUI screen, the user clicks on the Update button. This instructs the microcontroller to do a scan of the available cells and enter the cell voltage values into the Cell Readout column. An offset is automatically calculated and saved to the microcontroller RAM. The calibrated value remains in RAM as long as the microcontroller is powered. The calibration values can be programmed into the microcontroller flash using the procedure defined in the “Saving Microcode Changes” on page 9.

This single point calibration removes errors caused by input voltage drops, the ISL94208 input level shifters, AO voltage drops, ADC conversion errors, and errors in the voltage reference.

As an example of the calibration procedure and accuracy, a board was calibrated at about 3.3V per cell, as shown in Figure 4. This shows that the un-calibrated error was about 30mV.

Then the cells were measured over the range of 2.7V to 4.1V, with the results shown in Figure 5.

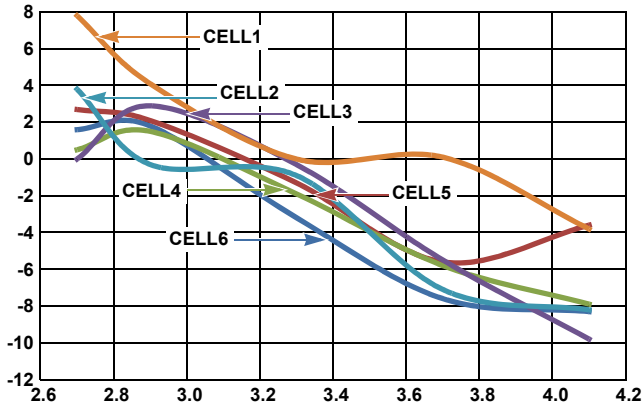


FIGURE 5. SINGLE POINT CALIBRATION ACCURACY RESULTS, ACCURACY OVER VOLTAGE, ROOM TEMP

The same board was re-calibrated at 3.6V, and the accuracy measured again, with mostly the same results.

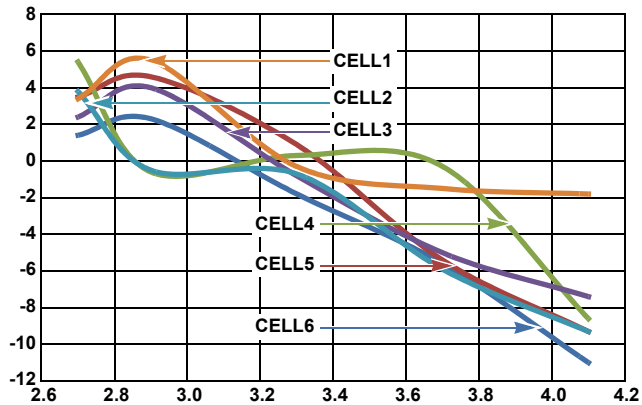


FIGURE 6. SINGLE POINT CALIBRATION ACCURACY RESULTS, ACCURACY UNDER VOLTAGE, ROOM TEMP

Resetting Calibration

If a board needs to be calibrated again, then the offsets must be set to zero first. Do this by setting the Applied input values to match the Cell Readout values. Then click the “Update” button. This should set the Offset values to zero. If it does not, then repeat until they are all zero. Now, you can use the previous procedure to set new offset values.

ISL94208 Cell Balancing

The operation of the cell balance algorithm is described in more detail in the “ISL94208 Microcode Reference Guide”. However, a quick description is provided here.

The microcontroller code essentially runs the cell balancing algorithm constantly. However, cells are actually balanced only when all conditions allow it. Conditions that control cell balancing are differential cell voltage, temperature, open circuit detection, and current sense. Of course, if there are events that turn off the charge/discharge FETs, such as undervoltage detection, then current will go to zero and balancing is also turned off. For a graphical depiction of the cell balance routine, see Figure 7.

In general there is no balancing, if:

- the cell balance off timer is counting.
- the temperature is too high or too low for balancing.
- the difference between the highest voltage cell and the lowest voltage cell is lower than the specified minimum voltage differential, meaning that the cells are already balanced.
- the difference between the highest voltage cell and the lowest voltage cell exceeds a specified maximum.
- an input open circuit is detected.
- balance during charge is selected and there is no charge current.
- balance during discharge is selected and there is no discharge current.
- the maximum number of cells are already being balanced.

Once the general conditions are met, then balancing for each cell proceeds, starting with the cell with the highest voltage differential from the lowest voltage cell.

If there is no hardware that detects current flow, then balancing is disabled.

The conditions for Cell Balance that are programmable through the GUI are described in the following.

CBCellMinDeltaV	<input type="text" value="30"/>	mV
CBCellMaxDeltaV	<input type="text" value="400"/>	mV

CELL BALANCE MIN/MAX

The CBCellMinDeltaV parameter specifies the differential between the highest voltage cell and the lowest voltage for a

balanced pack. Ideally, this value is zero to achieve cells with the same capacity. However, due to variations in cell voltage measurement through inaccuracy in the ISL94208 level translation and the resolution of the microcontroller, this is the value chosen for the default. The 30mV value could be a little smaller, based on the calibrated results above, but overall, the system should allow for a minimum of 15mV variation between cells over-temperature and voltage and the microcontroller minimum resolution of 3mV. If changing this value, the recommended minimum CBCellMinDeltaV value is 20mV. If the value is set too low, then it is possible for the system to balance the wrong cell.

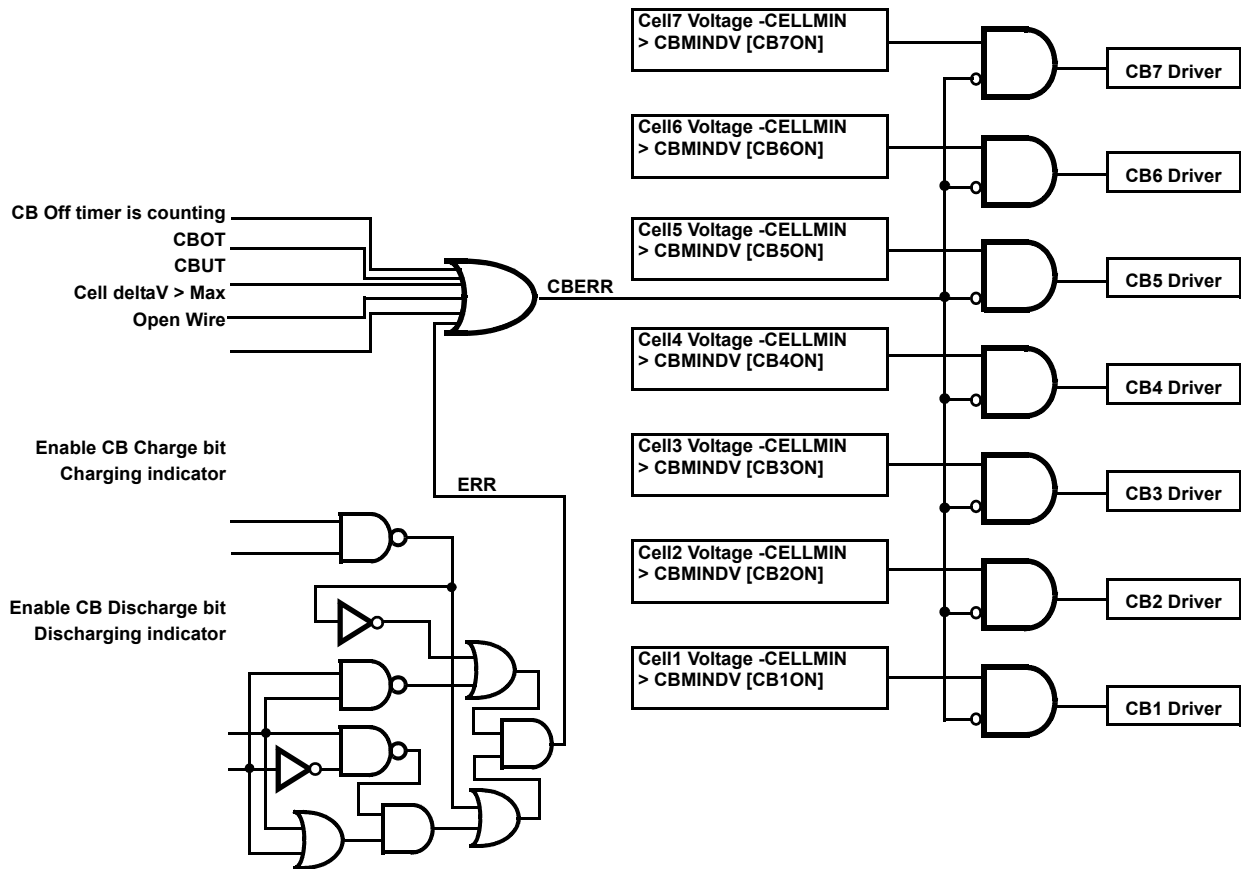


FIGURE 7. CELL BALANCE OPERATION

The CBCellMaxDeltaV value is the maximum allowable differential between the minimum voltage cell and the maximum voltage cell. The most likely cause for this condition is that one or more cells reaches minimum capacity during discharge, so that the voltage on those cells drops very fast.

The ISL94208EVZ kit microcode treats a large differential between the high voltage cell and the low voltage cell like a cell open circuit condition, where the microcontroller turns off the charge and discharge FETs and turns off cell balancing.

This may not be the preferred approach, but any change would require an update to the microcode. Another solution to this condition, for example, would be to turn off the discharge FET, but leave the charge FET on. Then, when there is charge current, the lower voltage cells could balance faster than the other cells to try to recover the pack capacity. But, this approach might not be the proper response to other conditions that show up with the same symptoms, which would prompt other conditionals. Since each application is different, the microcode provided, takes a simple approach.

ISL94208 Flash Programming

Because of memory limitations in the microcontroller, it is not possible to include EEPROM re-programming through the I²C port. Programming changes to Flash then becomes a multi step process.

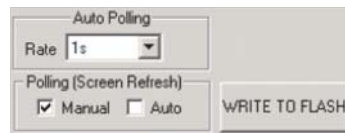
The microcontroller contains the base code when the board is assembled, so it is not necessary to make any changes for basic operation of the board.

Whether it is desired to change the operation of the microcontroller code or change the calibration coefficients in the microcontroller Flash, the process of loading the modified code is the same. The following procedure describes how to modify the Flash memory for calibration and pack configuration parameters.

First, the board is calibrated using the procedure described in section “Calibration Tab” on page 7. This procedure sets the calibration values into the microcontroller RAM. If there are any changes to the operation of the pack (for example different overvoltage or undervoltage thresholds) make these changes as described in “Pack TAB” on page 5.

Saving Microcode Changes

Once calibration values changes to Pack settings, or device parameters are



saved in RAM, click on the “Write to Flash” button. This brings up a window as shown in Figure 8.

In this window, select the “base” code and click on “OPEN”. The base code will be:

- ISL94208rev210.abs.s19.

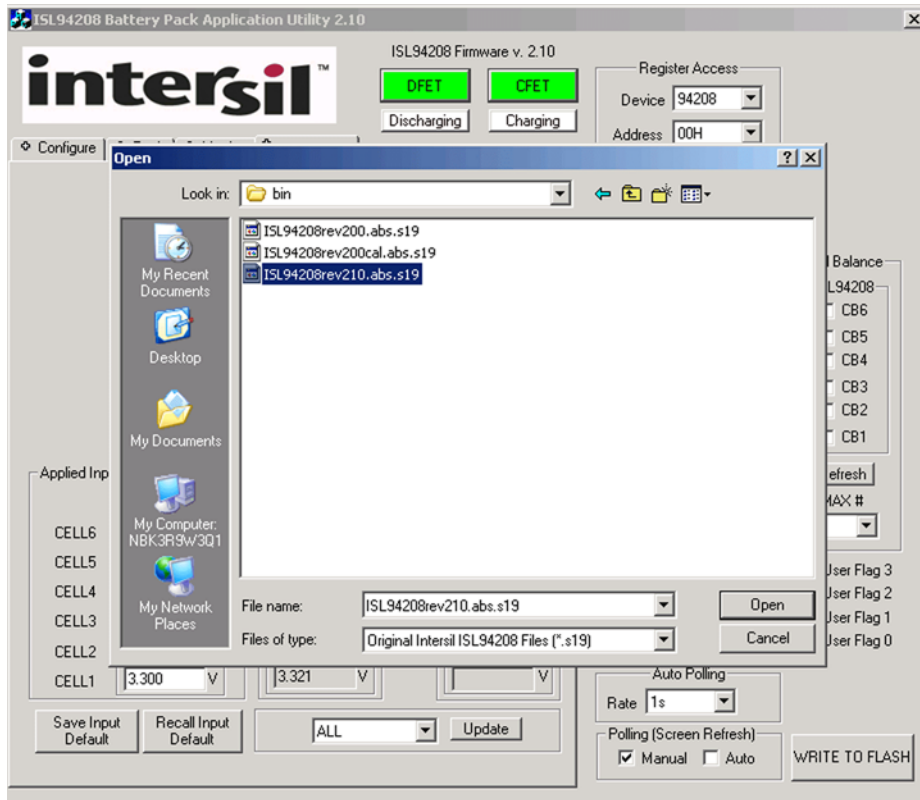


FIGURE 8. ISL94208 GUI WITH “WRITE TO FLASH” OPEN FLASH DIALOG BOX

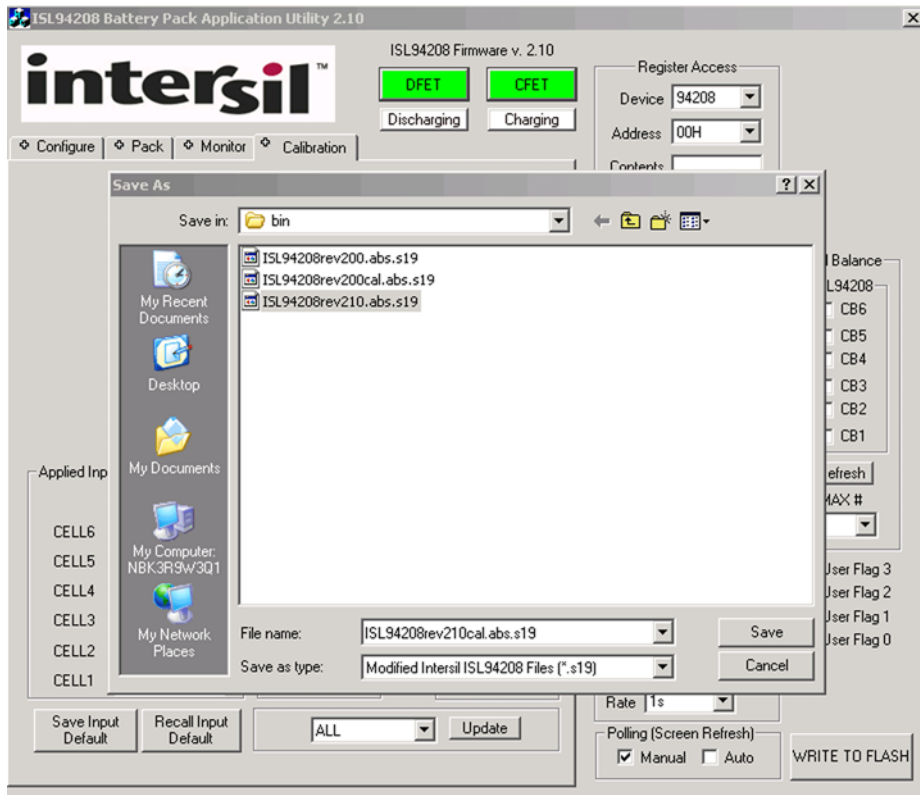


FIGURE 9. ISL94208 GUI “WRITE TO FLASH” WITH SAVE TO FLASH FILE DIALOG BOX

Make sure that you select the correct file.

The next window that appears will look similar, but you now change the file name to something appropriate and click “SAVE” to save the new code. Figure 9 example, shows a modified file name of ISL94208rev210cal.abs.s19. The file can be given any other name but must have suffix “.abs.s19” . If you want to keep the released, default, base code separate, do not click SAVE without changing the name of the file.

Loading Code Into The Microcontroller

The following procedure is used for loading the microcontroller with new factory provided updates of the microcode, as well as loading modified or calibrated code.

The code is loaded into the microcontroller using the NXP (formerly Freescale) USB/Multilink module and Code Warrior tools. These must be available prior to starting the programming sequence.

1. Start the Simulator.

Use the program called **HIWAVE.EXE**, located in the prog folder in the CodeWarrior installation folder (c:\Program Files\Freescale\CW08 v5.0\prog). The Simulator appears as shown in Figure 10.

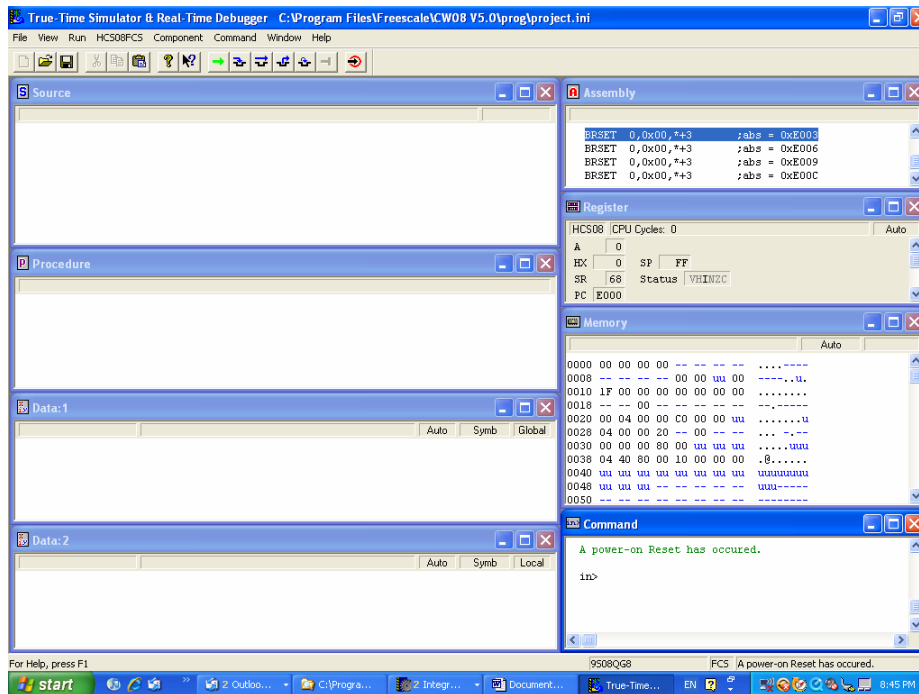


FIGURE 10. CODE WARRIOR SIMULATOR (HIGHWAVE.EXE)

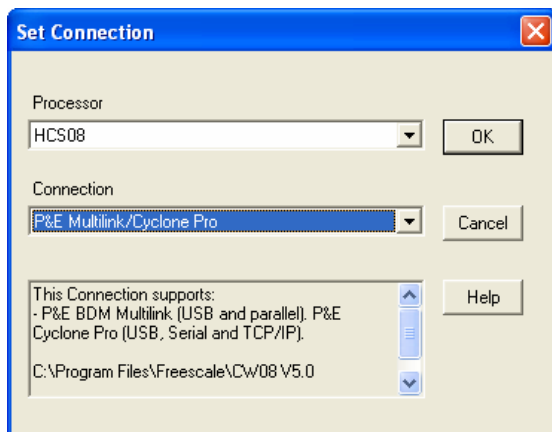


FIGURE 11. CODE WARRIOR SIMULATOR SET CONNECTION

2. Select *Set Connection* from the Component menu. The *Connection* dialog box appears (see Figure 11).

3. The CPU derivative for this project is in the HCS08 subfamily, so select HCS08 from the Processor pull-down menu. Select P&E Multilink/Cyclone Pro in the Connection pull-down menu. Press OK.

4. The *Connection Manager* dialog box appears (see Figure 12). Press Connect.

5. From the File menu, select *Load Application....* The *Load Executable File* dialog box appears (see Figure 13.)

6. Browse to find and select the base code (the default code initially programmed on the board), a newly revised program (provided by Intersil or your own new code), or the new configuration and calibrated code in the modified “.abs.s19” file.

Press Open.

This brings up a dialog to start the flash memory write. Select “Yes”. This begins the write of the new flash values. When this process completes, the USB/Multilink cable can be removed from the board and the board power cycled to begin the new code operation.

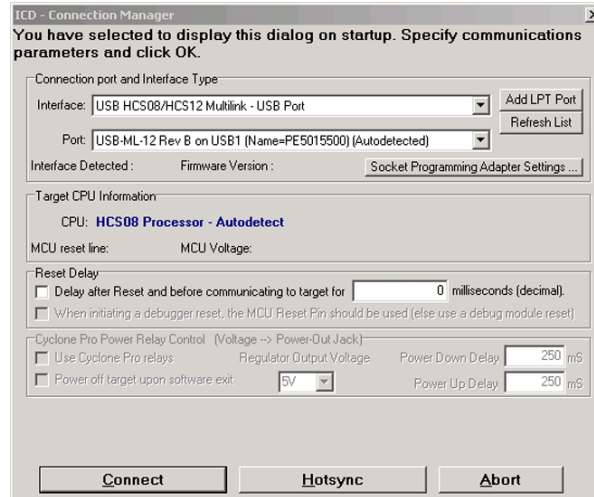


FIGURE 12. CODE WARRIOR SIMULATOR CONNECTION MANAGER

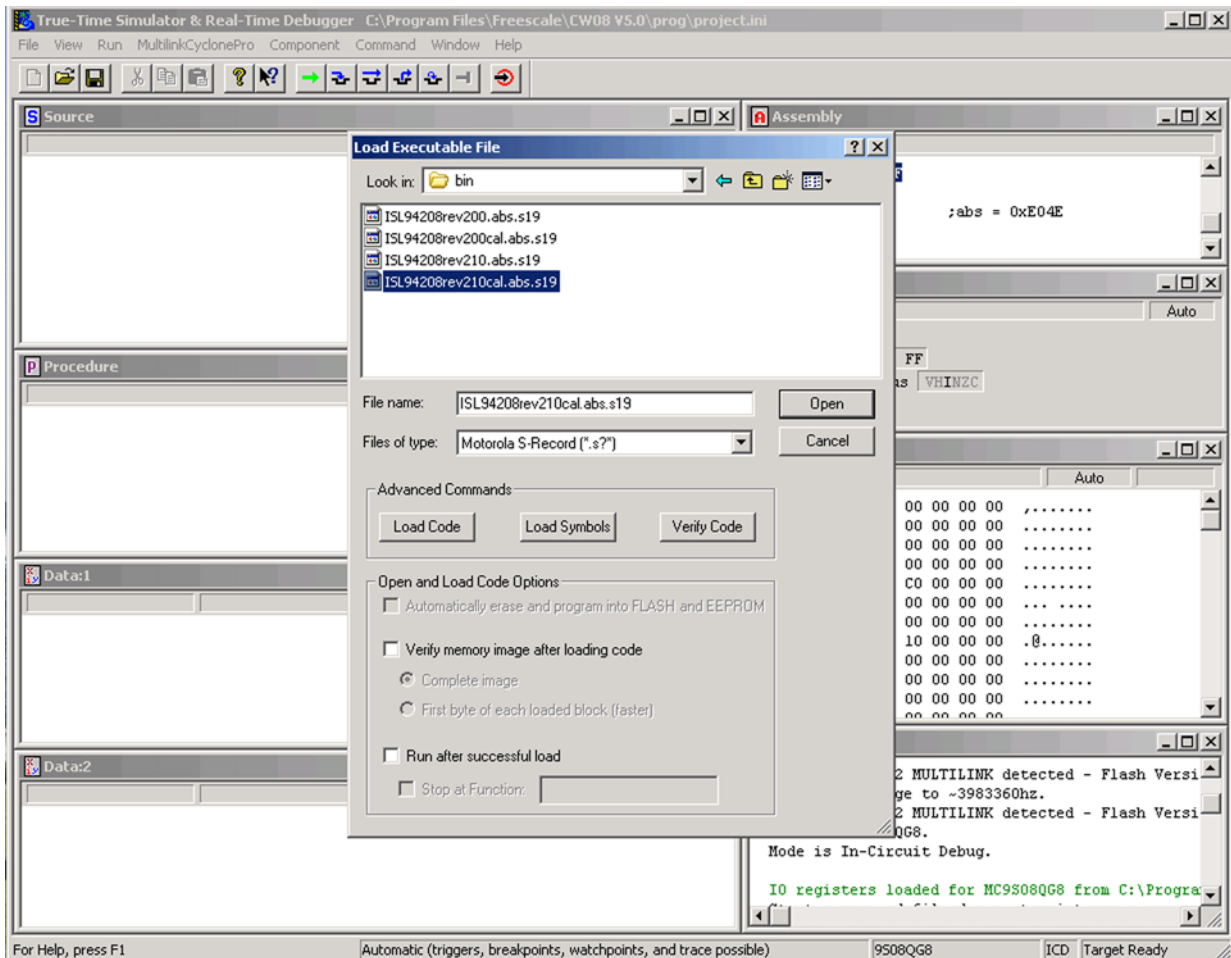


FIGURE 13. CODE WARRIOR SIMULATOR LOAD APPLICATION

Notice

1. Descriptions of circuits, software and other related information in this document are provided only to illustrate the operation of semiconductor products and application examples. You are fully responsible for the incorporation or any other use of the circuits, software, and information in the design of your product or system. Renesas Electronics disclaims any and all liability for any losses and damages incurred by you or third parties arising from the use of these circuits, software, or information.
2. Renesas Electronics hereby expressly disclaims any warranties against and liability for infringement or any other claims involving patents, copyrights, or other intellectual property rights of third parties, by or arising from the use of Renesas Electronics products or technical information described in this document, including but not limited to, the product data, drawings, charts, programs, algorithms, and application examples.
3. No license, express, implied or otherwise, is granted hereby under any patents, copyrights or other intellectual property rights of Renesas Electronics or others.
4. You shall not alter, modify, copy, or reverse engineer any Renesas Electronics product, whether in whole or in part. Renesas Electronics disclaims any and all liability for any losses or damages incurred by you or third parties arising from such alteration, modification, copying or reverse engineering.
5. Renesas Electronics products are classified according to the following two quality grades: "Standard" and "High Quality". The intended applications for each Renesas Electronics product depends on the product's quality grade, as indicated below.
"Standard": Computers; office equipment; communications equipment; test and measurement equipment; audio and visual equipment; home electronic appliances; machine tools; personal electronic equipment; industrial robots; etc.
"High Quality": Transportation equipment (automobiles, trains, ships, etc.); traffic control (traffic lights); large-scale communication equipment; key financial terminal systems; safety control equipment; etc.
Unless expressly designated as a high reliability product or a product for harsh environments in a Renesas Electronics data sheet or other Renesas Electronics document, Renesas Electronics products are not intended or authorized for use in products or systems that may pose a direct threat to human life or bodily injury (artificial life support devices or systems; surgical implantations; etc.), or may cause serious property damage (space system; undersea repeaters; nuclear power control systems; aircraft control systems; key plant systems; military equipment; etc.). Renesas Electronics disclaims any and all liability for any damages or losses incurred by you or any third parties arising from the use of any Renesas Electronics product that is inconsistent with any Renesas Electronics data sheet, user's manual or other Renesas Electronics document.
6. When using Renesas Electronics products, refer to the latest product information (data sheets, user's manuals, application notes, "General Notes for Handling and Using Semiconductor Devices" in the reliability handbook, etc.), and ensure that usage conditions are within the ranges specified by Renesas Electronics with respect to maximum ratings, operating power supply voltage range, heat dissipation characteristics, installation, etc. Renesas Electronics disclaims any and all liability for any malfunctions, failure or accident arising out of the use of Renesas Electronics products outside of such specified ranges.
7. Although Renesas Electronics endeavors to improve the quality and reliability of Renesas Electronics products, semiconductor products have specific characteristics, such as the occurrence of failure at a certain rate and malfunctions under certain use conditions. Unless designated as a high reliability product or a product for harsh environments in a Renesas Electronics data sheet or other Renesas Electronics document, Renesas Electronics products are not subject to radiation resistance design. You are responsible for implementing safety measures to guard against the possibility of bodily injury, injury or damage caused by fire, and/or danger to the public in the event of a failure or malfunction of Renesas Electronics products, such as safety design for hardware and software, including but not limited to redundancy, fire control and malfunction prevention, appropriate treatment for aging degradation or any other appropriate measures. Because the evaluation of microcomputer software alone is very difficult and impractical, you are responsible for evaluating the safety of the final products or systems manufactured by you.
8. Please contact a Renesas Electronics sales office for details as to environmental matters such as the environmental compatibility of each Renesas Electronics product. You are responsible for carefully and sufficiently investigating applicable laws and regulations that regulate the inclusion or use of controlled substances, including without limitation, the EU RoHS Directive, and using Renesas Electronics products in compliance with all these applicable laws and regulations. Renesas Electronics disclaims any and all liability for damages or losses occurring as a result of your noncompliance with applicable laws and regulations.
9. Renesas Electronics products and technologies shall not be used for or incorporated into any products or systems whose manufacture, use, or sale is prohibited under any applicable domestic or foreign laws or regulations. You shall comply with any applicable export control laws and regulations promulgated and administered by the governments of any countries asserting jurisdiction over the parties or transactions.
10. It is the responsibility of the buyer or distributor of Renesas Electronics products, or any other party who distributes, disposes of, or otherwise sells or transfers the product to a third party, to notify such third party in advance of the contents and conditions set forth in this document.
11. This document shall not be reprinted, reproduced or duplicated in any form, in whole or in part, without prior written consent of Renesas Electronics.
12. Please contact a Renesas Electronics sales office if you have any questions regarding the information contained in this document or Renesas Electronics products.
(Note 1) "Renesas Electronics" as used in this document means Renesas Electronics Corporation and also includes its directly or indirectly controlled subsidiaries.
(Note 2) "Renesas Electronics product(s)" means any product developed or manufactured by or for Renesas Electronics.

(Rev.4.0-1 November 2017)



SALES OFFICES

Renesas Electronics Corporation

<http://www.renesas.com>

Refer to "<http://www.renesas.com/>" for the latest and detailed information.

Renesas Electronics America Inc.
1001 Murphy Ranch Road, Milpitas, CA 95035, U.S.A.
Tel: +1-408-432-8888, Fax: +1-408-434-5351

Renesas Electronics Canada Limited
9251 Yonge Street, Suite 8309 Richmond Hill, Ontario Canada L4C 9T3
Tel: +1-905-237-2004

Renesas Electronics Europe Limited
Dukes Meadow, Millboard Road, Bourne End, Buckinghamshire, SL8 5FH, U.K.
Tel: +44-1628-651-700, Fax: +44-1628-651-804

Renesas Electronics Europe GmbH
Arcadiastrasse 10, 40472 Düsseldorf, Germany
Tel: +49-211-6503-0, Fax: +49-211-6503-1327

Renesas Electronics (China) Co., Ltd.
Room 1709 Quantum Plaza, No.27 ZhichunLu, Haidian District, Beijing, 100191 P. R. China
Tel: +86-10-8235-1155, Fax: +86-10-8235-7679

Renesas Electronics (Shanghai) Co., Ltd.
Unit 301, Tower A, Central Towers, 555 Langao Road, Putuo District, Shanghai, 200333 P. R. China
Tel: +86-21-2226-0888, Fax: +86-21-2226-0999

Renesas Electronics Hong Kong Limited
Unit 1601-1611, 16/F., Tower 2, Grand Century Place, 193 Prince Edward Road West, Mongkok, Kowloon, Hong Kong
Tel: +852-2265-6688, Fax: +852-2886-9022

Renesas Electronics Taiwan Co., Ltd.
13F, No. 363, Fu Shing North Road, Taipei 10543, Taiwan
Tel: +886-2-8175-9600, Fax: +886-2-8175-9670

Renesas Electronics Singapore Pte. Ltd.
80 Bendemeer Road, Unit #06-02 Hyflux Innovation Centre, Singapore 339949
Tel: +65-6213-0200, Fax: +65-6213-0300

Renesas Electronics Malaysia Sdn.Bhd.
Unit 1207, Block B, Menara Amcorp, Amcorp Trade Centre, No. 18, Jln Persiaran Barat, 46050 Petaling Jaya, Selangor Darul Ehsan, Malaysia
Tel: +60-3-7955-9390, Fax: +60-3-7955-9510

Renesas Electronics India Pvt. Ltd.
No.777C, 100 Feet Road, HAL 2nd Stage, Indiranagar, Bangalore 560 038, India
Tel: +91-80-67208700, Fax: +91-80-67208777

Renesas Electronics Korea Co., Ltd.
17F, KAMCO Yangjae Tower, 262, Gangnam-daero, Gangnam-gu, Seoul, 06265 Korea
Tel: +82-2-558-3737, Fax: +82-2-558-5338