

RZ Ecosystem Partner Solution

MYIR RZ/G2L High-Performance SOM



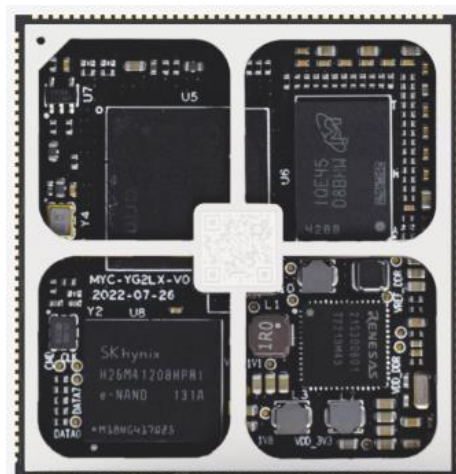
Solution Summary

The RZ/G2L high-performance system on module (SOM) is equipped with Renesas high-performance and cost-effective [RZ/G2L](#) processor, ideal for a wide range of industrial applications. Single/dual core Cortex-A55@1.2GHz+Cortex-M33@200MHz; Integrated Arm mali-G31 3D GPU, VPU supports H.264 1920*1080@30FPS video codec; Rich multimedia interface such as MIPI-DSI/RGB/MIPI-CSI/Parallel CSI, supporting 1080P HD display; Supports 2 Gigabit Ethernet interfaces, 2 CAN FD interfaces, 2 USB2.0 interfaces, and 5 UARTs

Features/Benefits

- CPU: RZ/G2L, dual Cortex-A55@1.2G +Cortex-M33@200M
- RAM: 1GB/2GB DDR4 (supports optional 3GB/4GB DDR4)
- Flash: 8GB eMMC (supports optional 4GB/16GB/32GB eMMC)
- EEPROM: 32KB EEPROM
- OS: Linux 5.10, Ubuntu20.04
- Size: 43mm x 45mm

Diagrams / Graphics



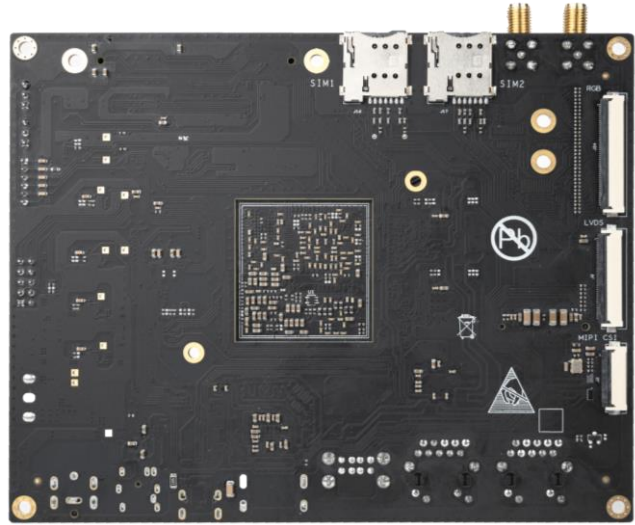
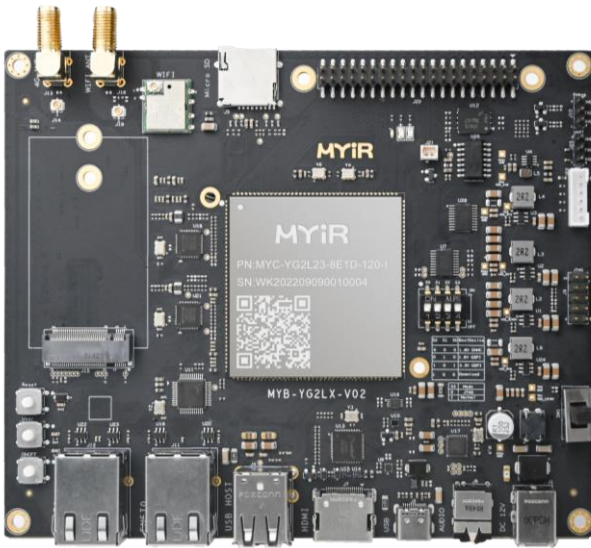
MYC-YG2LX CPU Module

Target Markets and Applications

- Construction machinery
- Industrial automation
- Charging pile
- Medical instrument
- Smart city

<https://www.myirtech.com/list.asp?id=718>

MYD-YG2LX Development Board



MYD-YG2LX Development Board Resources:

| | Function | Description |
|-------------------------|---------------|---------------------------------------|
| System | POWER | 12V DC |
| | KEY | 1*RESET, 1*USER, 1*ON/OFF |
| | BOOT SET | 1*BOOT Switch |
| | SD | 1*Micro SD |
| | DEBUG | 1*Debug UART, 1*JTAG |
| | QSPI | 1*QSPI |
| Communication Interface | WIFI/BT | 1*WIFI Module |
| | 5G/4G | 1*5G/4G Module Interface |
| | Ethernet | 2*10/100/1000M |
| | USB | 2* USB 2.0 HOST 1*USB 2.0 OTG |
| | UART | 4*UART |
| | CAN | 1*CAN |
| Multimedia Interface | DISPLAY | 1*LVDS 1*HDMI 1*RGB |
| | CAMERA | 1*MIPI CSI |
| | AUDIO | 1*Audio |
| Expansion Interface | RPI Interface | 1*40PIN Header, GPIO/I2C/UART/SPI/CAN |

Learn more: <https://www.myirtech.com/list.asp?id=718>