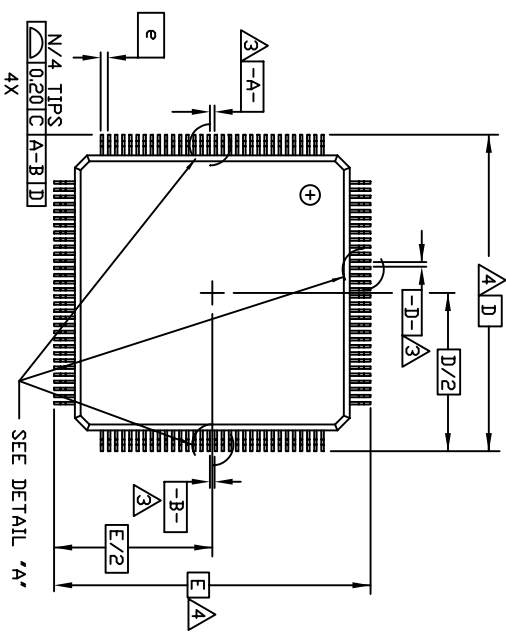
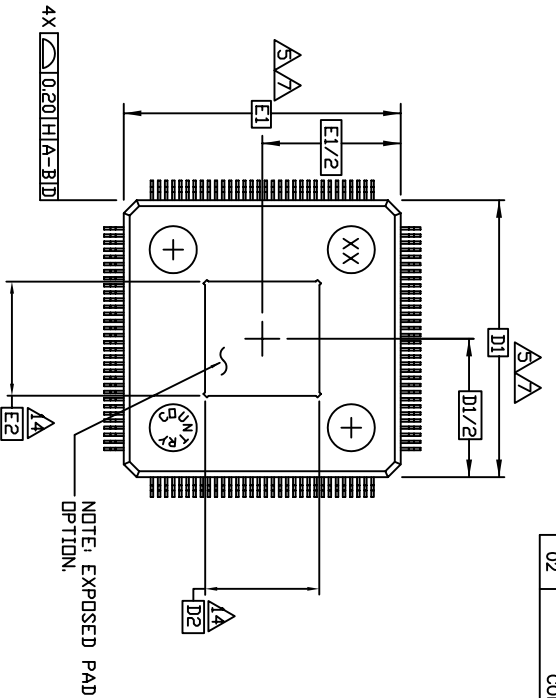


REVISIONS			
REV	DESCRIPTION	DATE	APPROVED
00	INITIAL RELEASE	11/19/08	MA
01	ADD E2 & D2 DIM PAGE 2 TABLE	4/14/09	MA
02	COMBINE POD & LAND PATTERN	6/25/13	KS

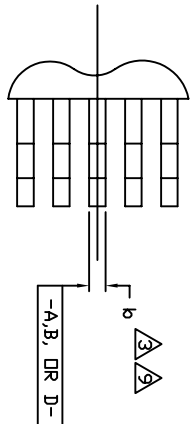
TOP VIEW



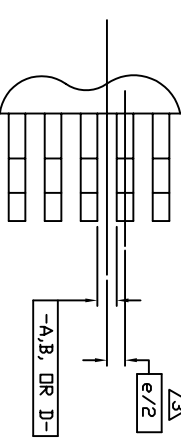
BOTTOM VIEW



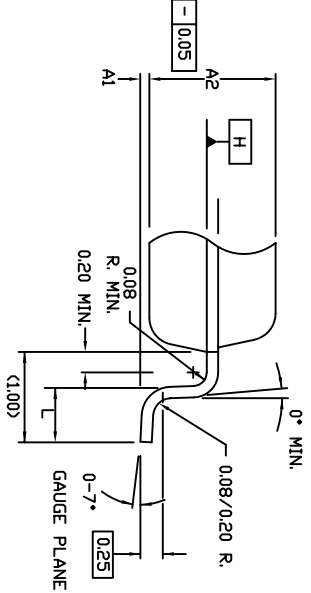
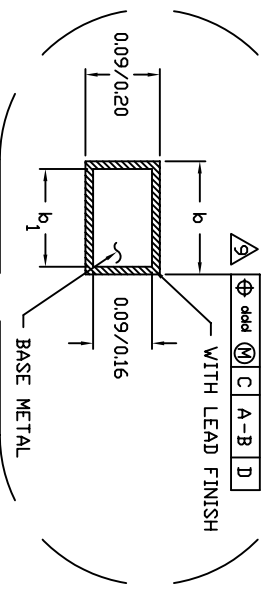
ODD LEAD SIDES



EVEN LEAD SIDES



DETAIL "A"



DETAIL "B"

TOLERANCES UNLESS SPECIFIED		DECIMAL		ANGULAR	
XX±	±1°				
XXX±					
APPROVALS	DATE	TITLE	EO/EOG 100 PACKAGE OUTLINE	SIZE	DRAWING No.
DRWN 02dG	11/19/08	14.0 x 14.0 x 1.4 mm BODY	1.00/0.10 mm FORM	C	PSC-4240
CHECKED					REV 02
					DO NOT SCALE DRAWING
					SHEET 1 OF 3


  
 6024 Silver Creek Valley Road  
 San Jose CA 95138  
 PHONE: (408) 284-8200  
 FAX: (408) 284-8591  
[www.IDT.com](http://www.IDT.com)

**NOTES:**


- 1. ALL DIMENSIONING AND TOLERANCING CONFORM TO ASME Y14.5M-1994.
- 2. DATUM PLANE  $\square\text{--H}\square$  LOCATED AT MOLD PARTING LINE AND COINCIDENT WITH LEAD, WHERE LEAD EXITS PLASTIC BODY AT BOTTOM OF PARTING LINE.
- 3. DATUMS  $\square\text{--B}\square$  AND  $\square\text{--D}\square$  TO BE DETERMINED AT CENTERLINE BETWEEN LEADS WHERE LEADS EXIT PLASTIC BODY AT DATUM PLANE  $\square\text{--H}\square$ .
- 4. TO BE DETERMINED AT SEATING PLANE  $\square\text{--C}\square$ .
- 5. DIMENSIONS D1 AND E1 DO NOT INCLUDE MOLD PROTRUSION, ALLOWABLE MOLD PROTRUSION IS 0.254 MM DN D1 AND E1 DIMENSIONS.
- 6. 'N' IS THE TOTAL NUMBER OF TERMINALS.
- 7. THESE DIMENSIONS TO BE DETERMINED AT DATUM PLANE  $\square\text{--H}\square$ .
- 8. PACKAGE TOP DIMENSIONS ARE SMALLER THAN BOTTOM DIMENSIONS AND TOP OF PACKAGE WILL NOT OVERHANG BOTTOM OF PACKAGE.

- 9. DIMENSION b DOES NOT INCLUDE DAMBAR PROTRUSION, ALLOWABLE DAMBAR PROTRUSION SHALL BE 0.08mm TOTAL IN EXCESS OF THE b DIMENSION AT MAXIMUM MATERIAL CONDITION. DAMBAR CANNOT BE LOCATED ON THE LOWER RADIUS OR THE FOOT.
- 10. CONTROLLING DIMENSION: MILLIMETER.
- 11. MAXIMUM ALLOWABLE DIE THICKNESS TO BE ASSEMBLED IN THIS PACKAGE FAMILY IS 0.38 MILLIMETERS.
- 12. THIS OUTLINE CONFORMS TO JEDEC PUBLICATION 95 REGISTRATION MS-026, VARIATION BEB, BEC, BED, & BEE.
- 13. A1 IS DEFINED AS THE DISTANCE FROM THE SEATING PLANE TO THE LOWEST POINT OF THE PACKAGE BODY.
- 14. DIMENSION D2 AND E2 REPRESENT THE SIZE OF THE EXPOSED PAD. THE ACTUAL DIMENSIONS ARE SPECIFIED ON THE LEADFRAME DRAWING.

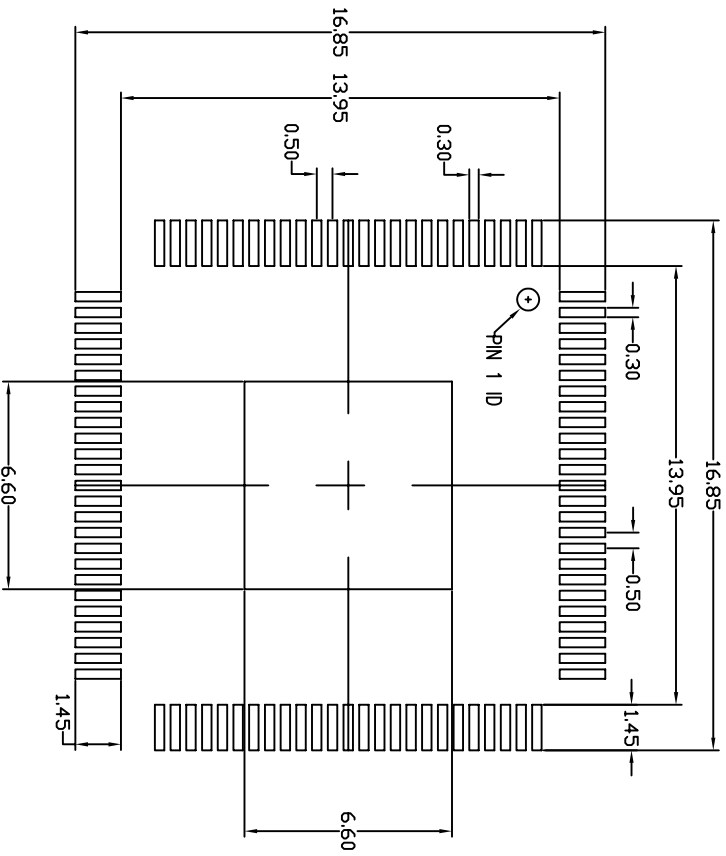
SYMBOL	JEDEC VARIATION ALL DIMENSIONS IN MILLIMETERS			N D T E
	MIN.	NOM.	MAX.	
A	$\approx$	$\approx$	1.60	13
A1	0.05	$\approx$	0.15	
A2	1.35	1.40	1.45	
D		16.00 BSC.		4
D1		14.00 BSC.		7,8
E		16.00 BSC.		4
E1		14.00 BSC.		7,8
L	0.45	0.60	0.75	
N		100		
e		0.50 BSC.		9
b	0.17	0.22	0.27	
b1	0.17	0.20	0.23	
D2	6.40	6.50	6.60	
E2	6.40	6.50	6.60	
ccc	$\approx$	$\approx$	0.08	
ddd	$\approx$	$\approx$	0.08	

REVISIONS			
REV	DESCRIPTION	DATE	APPROVED
00	INITIAL RELEASE	11/19/08	MA
01	ADD E2 & D2 DIM PAGE 2 TABLE	4/14/09	MA
02	COMBINE PAD & LAND PATTERN	6/25/13	KS

\*BASED ON 120UM WITH ADDED LEADS  
 @ EACH CORNER

TOLERANCES UNLESS SPECIFIED	ANGULAR	 6024 Silver Creek Valley Road San Jose CA 95138 PHONE: (408) 284-8200 FAX: (408) 284-8591 <a href="http://www.IDT.com">www.IDT.com</a>
DECIMAL	E1	
XX#		
XXXX#		
APPROVALS	DATE	TITLE
DRAWN $\partial$ ADG	11/19/08	EQ/EOG 100 PACKAGE OUTLINE
CHECKED		14.0 x 14.0 x 1.4 mm BODY 1.00/0.10 mm FORM
SIZE	DRAWING No.	REV
C	PSC-4240	02
DO NOT SCALE DRAWING		SHEET 2 OF 3

REVISIONS			
REV	DESCRIPTION	DATE	APPROVED
00	INITIAL RELEASE	11/19/08	MA
01	ADD E2 & D2 DIM PAGE 2 TABLE	4/14/09	MA
02	COMBINE POD & LAND PATTERN	6/25/13	KS



**RECOMMENDED FOOT PRINT DIMENSION**

- NOTES:**
1. ALL DIMENSION ARE IN mm. ANGLES IN DEGREES.
  2. TOP DOWN VIEW. AS VIEWED ON PCB.
  3. LAND PATTERN IN BLACK. NSMD PATTERN ASSUMED.
  4. LAND PATTERN RECOMMENDATION PER IPC-7351B LP CALCULATOR.

TOLERANCES UNLESS SPECIFIED		ANGULAR	
DECIMAL		±1°	
XX±			
XXX±			
APPROVALS	DATE	TITLE	
DRAWN <i>QAC</i>	11/19/08	EQ/EOG 100 PACKAGE OUTLINE	
CHECKED		14.0 x 14.0 X 1.4 mm BODY	
		1.00/0.10 mm FORM	
SIZE	DRAWING No.	REV	
C	PSC-4240	02	
DO NOT SCALE DRAWING		SHEET 3 OF 3	


**IDT**  
 8024 Silver Creek Valley Road  
 San Jose CA 95138  
 PHONE: (408) 284-8200  
 FAX: (408) 284-8591  
[www.IDT.com](http://www.IDT.com)