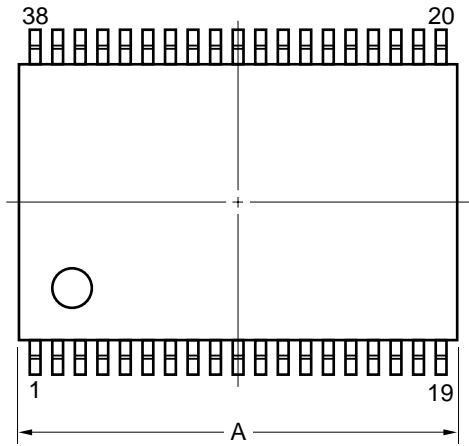
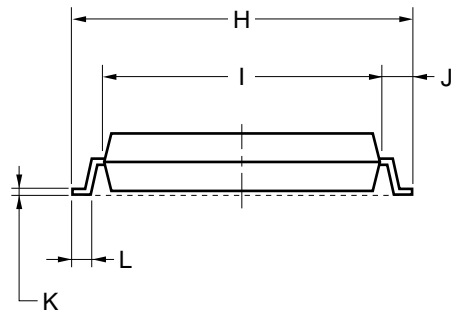
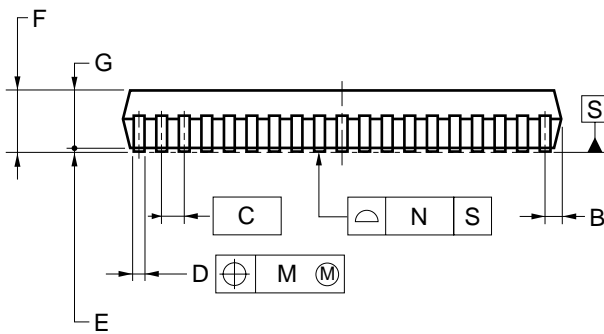
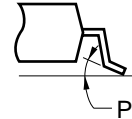


38-PIN PLASTIC SSOP (9.53 mm (375))



detail of lead end



NOTE

Each lead centerline is located within 0.10 mm of its true position (T.P.) at maximum material condition.

ITEM	MILLIMETERS
A	12.65±0.15
B	0.55 MAX.
C	0.65 (T.P.)
D	0.32 ^{+0.08} _{-0.07}
E	0.125±0.075
F	2.0 MAX.
G	1.7±0.1
H	10.0±0.2
I	8.0±0.2
J	1.0±0.2
K	0.17±0.07
L	0.5±0.15
M	0.10
N	0.10
P	3 ^{+7°} _{-3°}