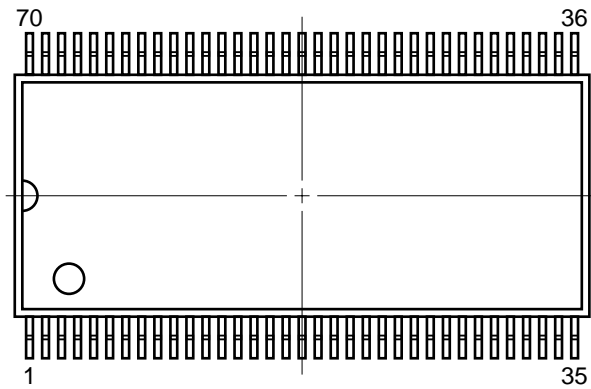
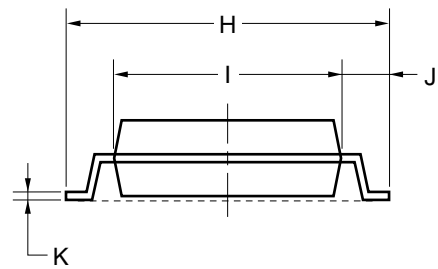
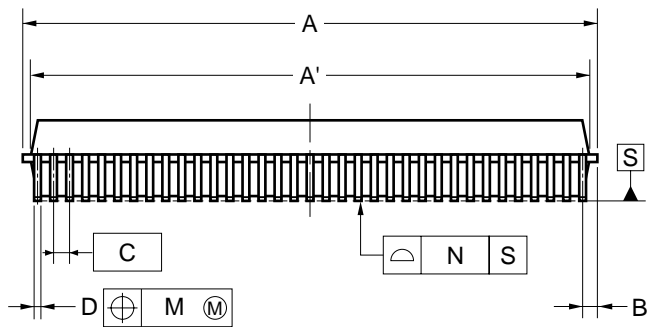
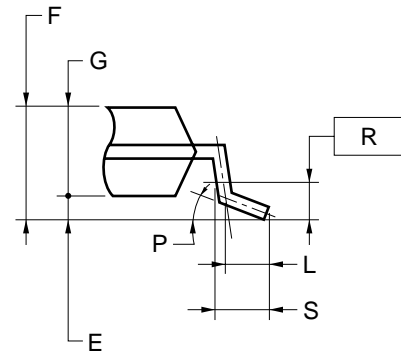


70-PIN PLASTIC SSOP (12.70 mm (500))



detail of lead end



NOTE

Each lead centerline is located within 0.10 mm of its true position (T.P.) at maximum material condition.

ITEM	MILLIMETERS
A	28.87 MAX.
A'	28.57±0.1
B	0.89 MAX.
C	0.8 (T.P.)
D	0.32 ^{+0.08} _{-0.07}
E	0.1±0.05
F	3.0 MAX.
G	2.7±0.15
H	15.9±0.3
I	12.7±0.1
J	1.6±0.2
K	0.22 ^{+0.025} _{-0.015}
L	0.8
M	0.10
N	0.10
P	3° ^{+5°} _{-3°}
R	0.25
S	0.88±0.15

P70G7-80-500A-1