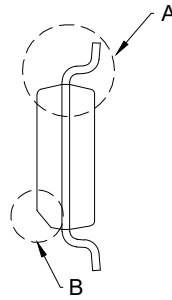
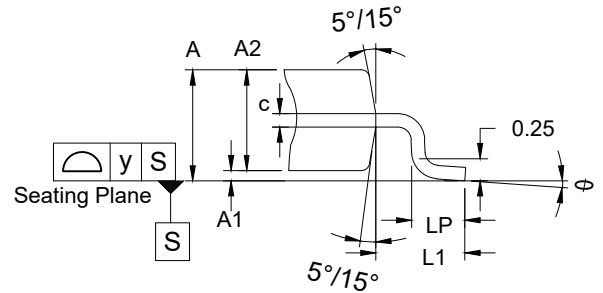


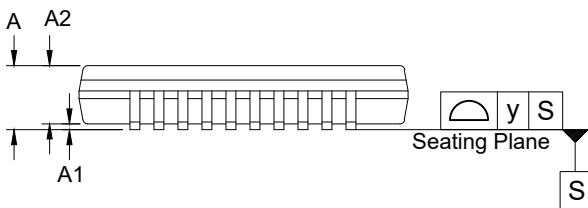
TOP VIEW



SIDE VIEW

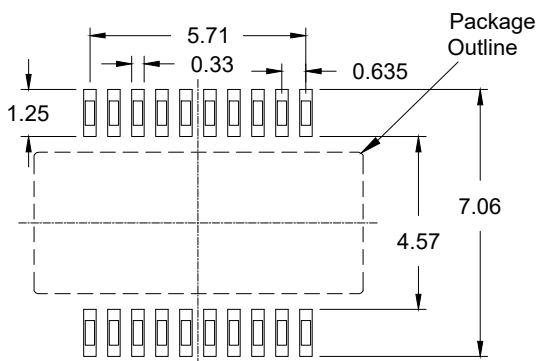


Detail A  
(Rotated 90° CW)



SIDE VIEW

Reference Symbol	Dimension in mm		
	Min	Nom	Max
E	3.81	3.94	3.99
A2	1.40	1.47	1.55
HD	8.56	8.69	8.74
HE	5.84	5.99	6.20
A	1.55	1.63	1.73
A1	0.10	0.15	0.25
bp	0.20	-	0.30
c	0.17	-	0.22
$\theta$	0.00	-	8.00
e	0.635 BSC		
y	-	-	0.10
LP	0.40	0.645	0.89
L1	-	1.04	-



RECOMMENDED LAND PATTERN  
(PCB Top View, SMD Design)

NOTES:

1. JEDEC compatible.
2. All dimensions are in mm and angles are in degrees.
3. Use  $\pm 0.05$  mm for the non-toleranced dimensions.
4. Foot length is measured at gauge plane 0.25 mm above seating plane.
5. Chamfer at 'B' is optional.