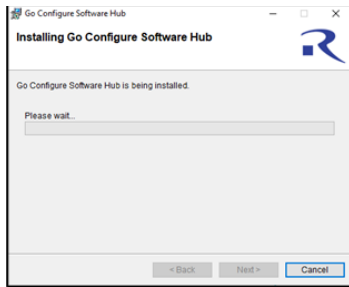
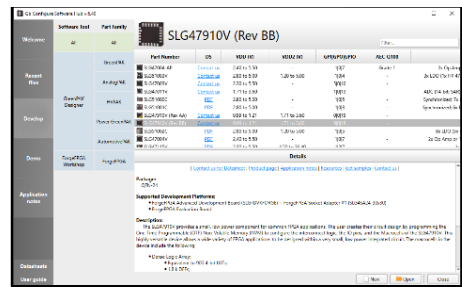


## ForgeFPGA Evaluation Board Quick Start Guide



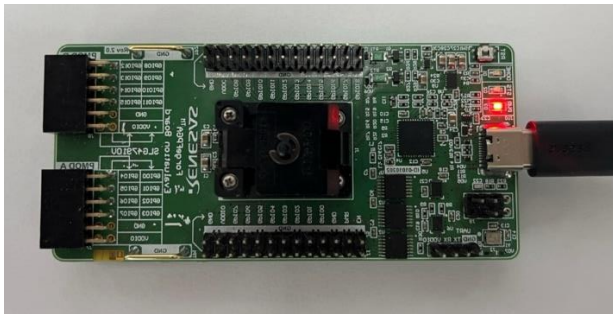
### 1. Install Go Configure Software Hub

Download and install the latest Go Configure Software Hub version from <https://www.renesas.com/software-tool/go-configure-software-hub>.



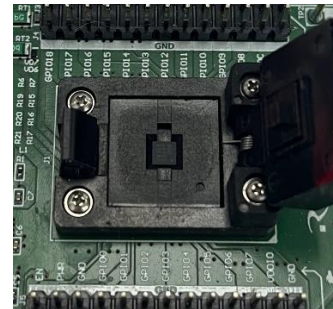
### 2. Create Your Project

Start Go Configure Software Hub and select SLG47910V.



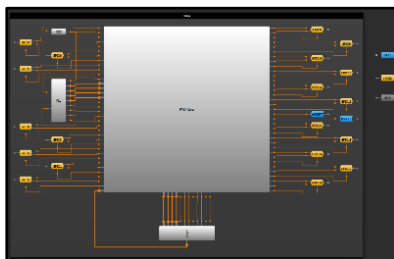
### 3. Connect Board to PC

Connect Evaluation Board to Windows, Linux or MacOS based computer using USB-C cable included in the kit.

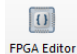



### 4. Place the Chip

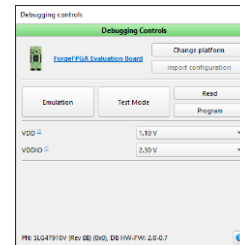
Use tweezers to place one FPGA chip in the socket. Make sure that the pin 1 marker on the socket corresponds to first pin dot on the chip. Close the socket.



### 5. Use Debug Tool

Save the project and open "FPGA Editor"  to synthesize code before programming, emulating, or testing.

Click "Debug"  toolbar icon next to FPGA editor to start the FPGA Emulation Tool. Choose "ForgeFPGA Evaluation Board".



### 6. Emulate or Program the Chip

Press the "Emulation" button to load your project code onto the chip. At this point the chip will operate according to the project code. Emulation can be performed multiple times, even on programmed chips. Press the "Emulation" button again to exit the emulation mode. Press the "Program" button to program the chip with current project.