

[Released on the Web]

R20TS1108EJ0100

Rev.1.00

Feb. 05, 2025

Solution Toolkit QE for Camera[RA] V1.0.0:
Development Assistance Tool for Camera Applications

Outline

QE for Camera[RA] V1.0.0, a development assistance tool for camera applications, has been released on the web. QE for Camera[RA] V1.0.0 are one of several Solution Toolkit which operate under the e² studio integrated development environment.

This product is available free of charge.

1. Product Features

QE for Camera[RA] supports the RA8D1 group of the RA Family. It is possible to easily perform the initial adjustment of the captured image (size of the captured image, starting position) and display it on the LCD, thereby shortening the development period. In addition, you can easily make the initial adjustment of the display connection (display timing adjustment, image quality adjustment) to the creation of GUIs.

QE for Camera[RA] V1.0.0 and QE for Display[RX,RA] V3.5.0 are the same plug-in. Therefore, you can use both tools by installing either one of the two. The software would be installed in e² studio as "Renesas QE for Display[RX,RA]/QE for Camera[RA]".

1.1 Display the guidance useful for development

Workflow and guides navigate you GUI operations from "Selecting a project" to "Implementation".

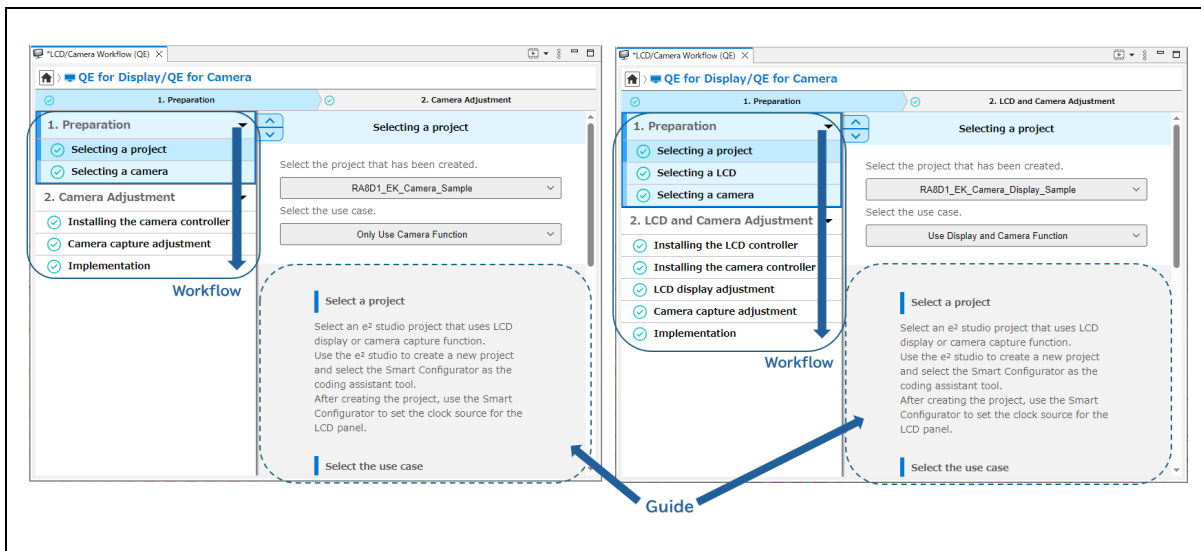


Figure 1 Workflow: (Left)Only Use Camera Function/
(Right)Use Display and Camera Function

1.2 Support MIPI-PHY and MIPI-DSI tuning

This can be easily adjusted using the "MIPI-PHY Setting" and "Timing Adjustment (LCD)".

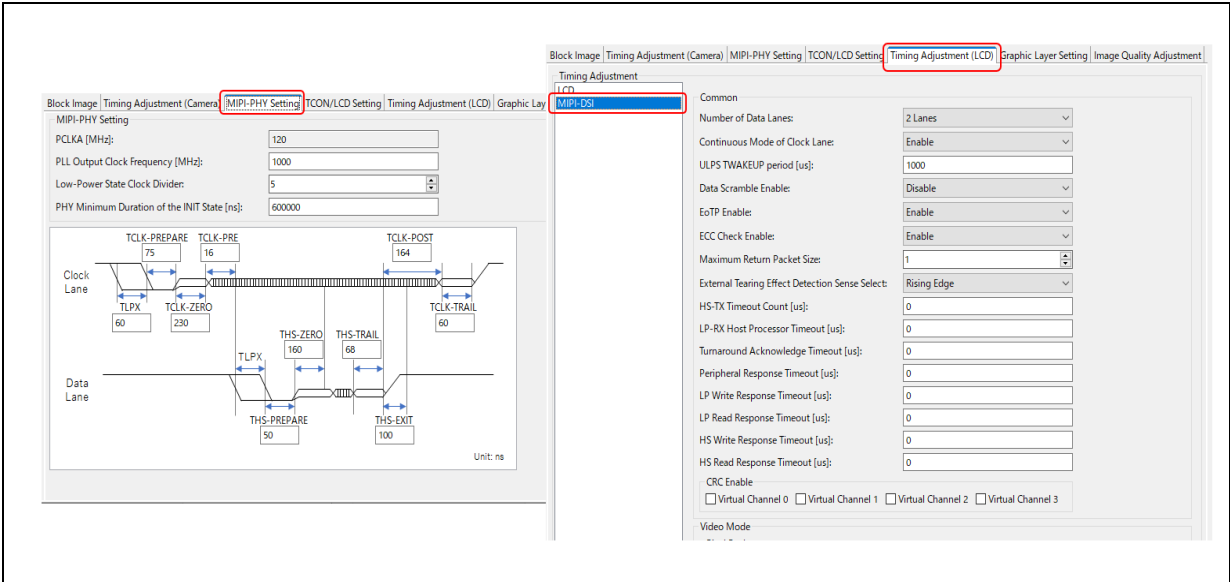


Figure 2 Display/Camera Tuning view : "MIPI-PHY Setting" and "Timing Adjustment (LCD)"

1.3 Support Tuning the Capture Engine Unit (CEU)

It can be easily adjusted using the "Timing Adjustment (Camera)".

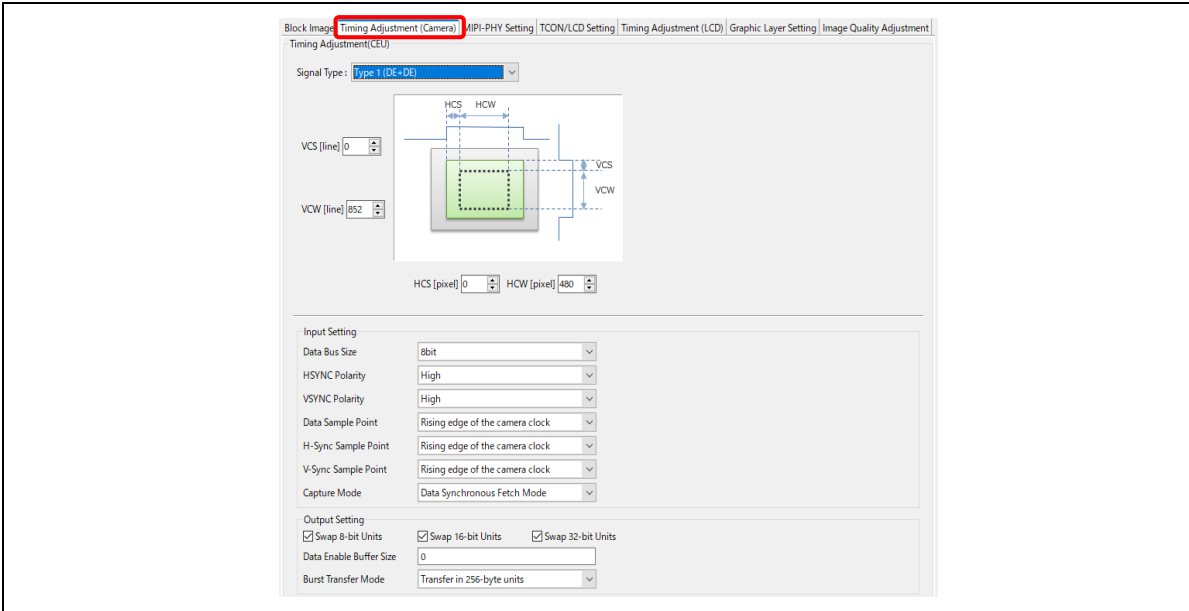


Figure 3 Display/Camera Tuning view : "Timing Adjustment (Camera)"

2. Supported Devices

RA Family RA8D1 group

3. Obtaining the Product

Download the product from the URL below.

<https://www.renesas.com/qe-camera>

Please refer to the release notes for this product for installation instructions, notes and limitations.

- QE for Display[RX,RA] V3.5.0, QE for Camera[RA] V1.0.0 Release Note

<https://www.renesas.com/document/rln/qe-displayrxra-v350-qe-camerara-v100-release-note>

QE for Camera[RA] V1.0.0 and QE for Display[RX,RA] V3.5.0 are the same Release Note.

For how to use the product, refer to the [Help] menu in e² studio.

Revision History

Rev.	Date	Description	
		Page	Summary
1.00	Feb.05.25	-	First edition issued

Renesas Electronics has used reasonable care in preparing the information included in this document, but Renesas Electronics does not warrant that such information is error free. Renesas Electronics assumes no liability whatsoever for any damages incurred by you resulting from errors in or omissions from the information included herein.

The past news contents have been based on information at the time of publication. Now changed or invalid information may be included.

The URLs in the Tool News also may be subject to change or become invalid without prior notice.

Corporate Headquarters

TOYOSU FORESIA, 3-2-24 Toyosu,
Koto-ku, Tokyo 135-0061, Japan
www.renesas.com

Trademarks

Renesas and the Renesas logo are trademarks of Renesas Electronics Corporation. All trademarks and registered trademarks are the property of their respective owners.

Contact information

For further information on a product, technology, the most up-to-date version of a document, or your nearest sales office, please visit:
www.renesas.com/contact/