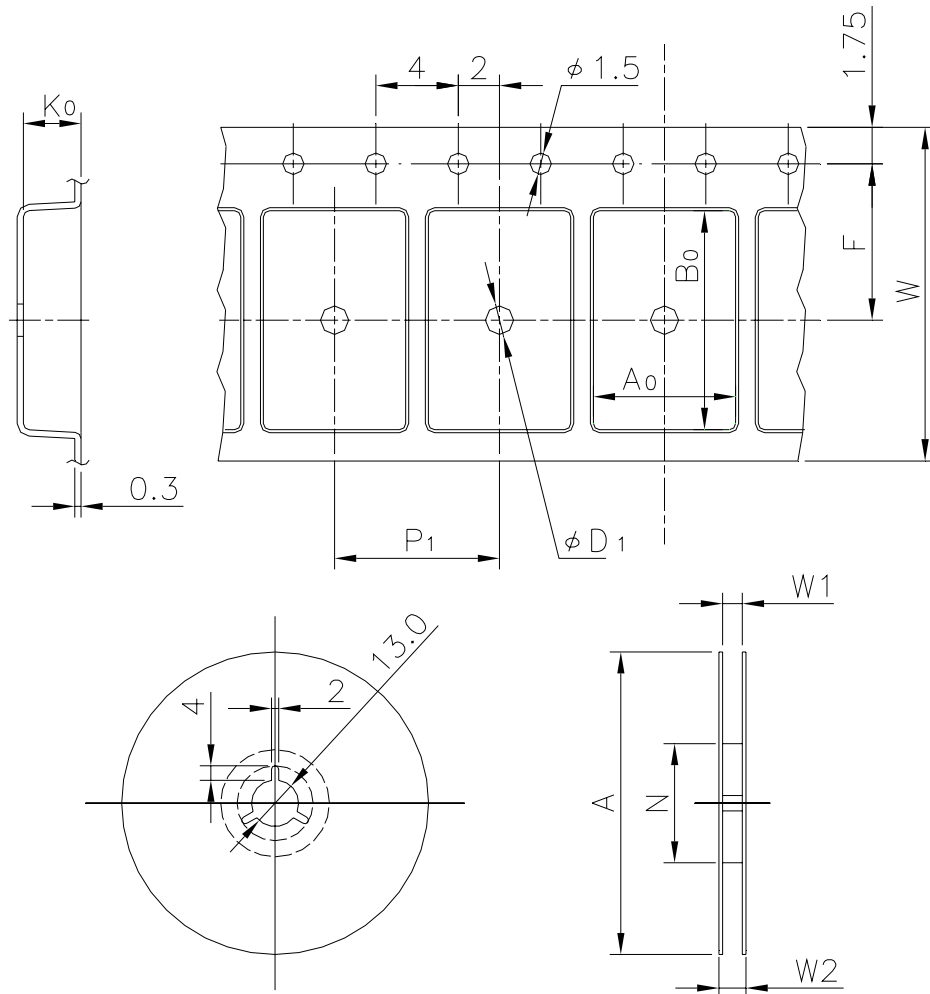


EMBOSSED TAPE

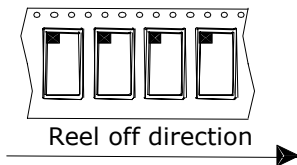
Taping Code	RENESAS Code	Previous Code
TE2420-100PFB-A	PTQP0100LB-A	100PFB-A



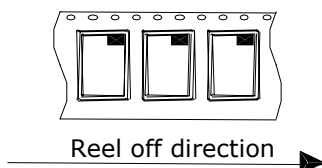
Unit:mm

Standard Orientation of Package

The pin 1 is located in the hatching portion.



The pin 1 may also be located in the following portion for reverse bent packages and some QFPs.



Tape Dimensions (mm)	W	24
	P_1	20
	A_0	15.1
	B_0	15.1
	K_0	1.5
	F	11.5
	D_1	2.0
Reel Dimensions (mm)	A	330
	N	100
	W1	25.4
	W2	29.4
Maximum storage No. IC/Reel		1500
Material		Carbon PS
Surface resistance		Less than $1 \times 10^{11} \Omega / \square$
Packing form		Dry pack