

RTKA210130DE0020BU

The [RAA210130](#) is a 30A synchronous step-down DC/DC converter power module with integrated digital PWM controller, smart power stage (SPS), power inductor, and passive components. The RTKA210130DE0020BU evaluation board (shown in [Figure 6](#)) features the RAA210130. Capable of delivering up to 30A of continuous current, the RAA210130 is a single-channel, step-down power supply that is optimized for high power density applications without the need for airflow or heatsink.

The RTKA210130DE0020BU evaluation board is a 3.8in x 3.5in 6-layer FR4 board with 2oz. copper on all layers. Operating from a single 4.75V to 15V input power rail, the RTKA210130DE0020BU evaluation board offers adjustable output voltages down to 0.6V and efficiencies of up to 96.3%. The RAA210130 uses the proprietary Renesas digital synthetic current modulation scheme to achieve the industry-best combination of transient response, ease of tuning, and efficiency across the full load range. The RTKA210130DE0020BU evaluation board is designed to program switching frequencies up to 1.25MHz. The Renesas [PowerNavigator™](#) can be used to configure and monitor the device. Soft-start/soft-stop time, TON/TOFF delay, VOUT transition rate can be easily configured using the PowerNavigator tool. V_{IN} UVLO and its hysteresis amongst the various parameters, can be configured in the PowerNavigator without the need for hardware modification.

Features

- Input voltage range from 4.75V to 15V
- Adjustable output voltage from 0.6V to 3.3V
- $\pm 0.7\%$ accuracy over line, load, and temperature
- Up to 96.3% conversion efficiency
- Programmable soft-start/soft-stop, TON/TOFF delay, VOUT transition rate
- Pre-bias output start-up
- Dedicated enable pin and PGOOD indicator
- UVLO, programmable overcurrent, overvoltage, and over-temperature
- Thermally enhanced 10mm×13mm×7.8mm BGA-PoP package

Specifications

The evaluation board is configured and optimized for the following operating conditions:

- $V_{IN} = 4.75V$ to 15V
- $V_{OUT} = 0.85V$
- $I_{OUT-MAX} = 30A$
- $f_{SW} = 500kHz$
- Set to FPWM/CCM mode by default

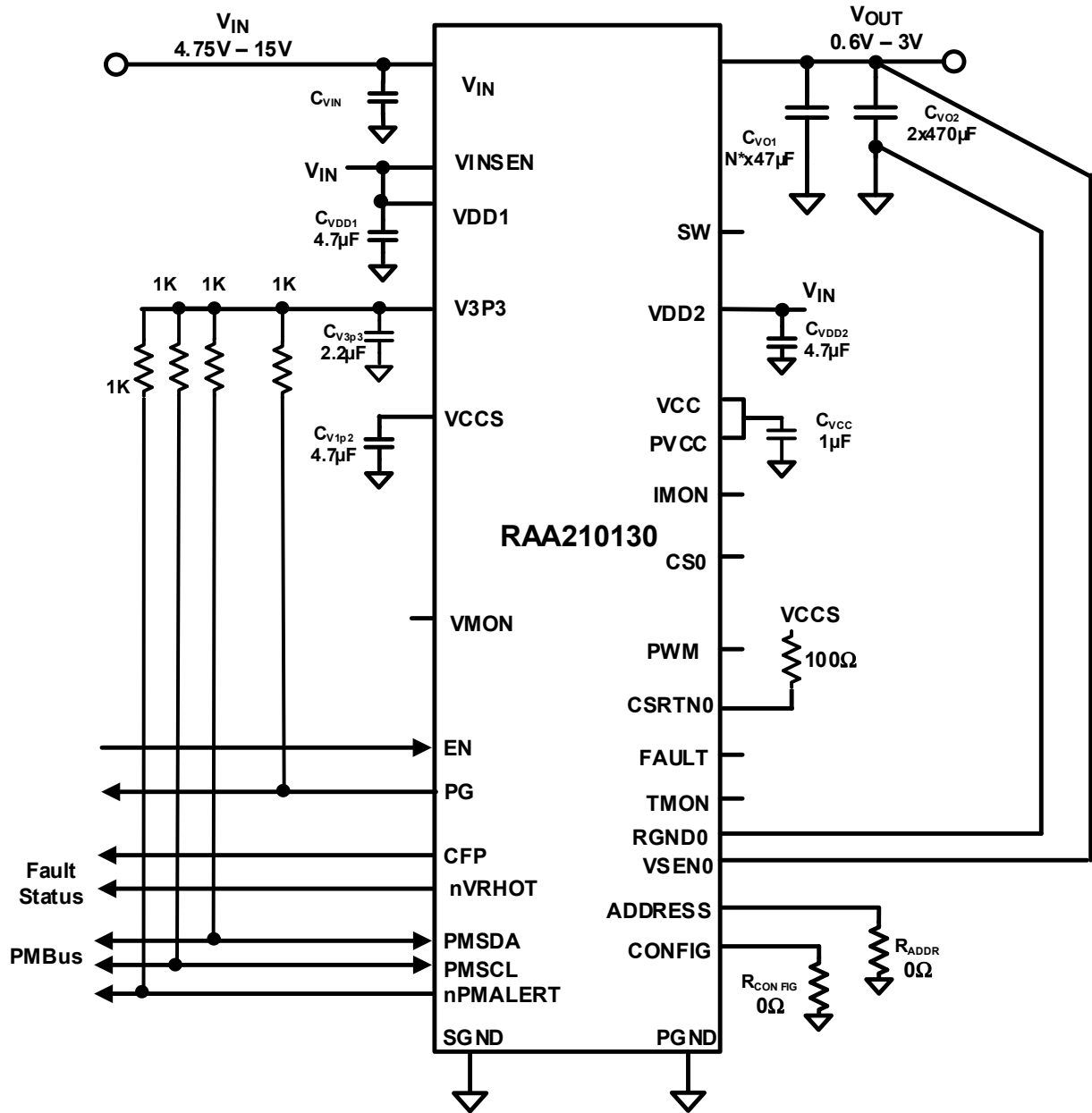


Figure 1. Block Diagram

*See the number of capacitors used in Table 2 for each output voltage.

Contents

| | |
|---|-----------|
| 1. Functional Description | 4 |
| 1.1 Setup and Configuration | 4 |
| 1.2 Configuring for 3.3V Output Application | 4 |
| 1.3 Configuring for Using External 5V/3.3V Supplies | 4 |
| 1.4 Selecting User Configurations | 4 |
| 1.5 Thermal Considerations and Current Derating | 5 |
| 1.6 Using the PowerNavigator | 6 |
| 2. Board Design | 9 |
| 2.1 Layout Guidelines | 10 |
| 2.2 Schematic Diagram | 11 |
| 2.3 Board Layout | 12 |
| 2.4 Bill of Materials | 16 |
| 3. Typical Performance Graphs | 18 |
| 4. Ordering Information | 23 |
| 5. Revision History | 23 |

1. Functional Description

The RTKA210130DE0020BU evaluation board provides the peripheral circuitry to evaluate the feature set of the RAA210130. The evaluation board includes several connectors, test points, a mechanical switch and jumper that simplify the evaluation of the module. When pin Enable is selected in the PowerNavigator, the converter is enabled and disabled by switching the EN pin as shown in [Figure 6](#). Connecting a jumper between pin 1 and 2 of the 3_3V_VIN_OPTION, allows using VIN to power the internal analog 5V and 3.3V supplies (as shown in [Figure 6](#)). The RTKA210130DE0020BU evaluation board has a built-in load transient test circuit which can be used to test the load transient response of the RAA210130 (see [Figure 7](#)). [Figure 6](#) and [Figure 7](#) show the photograph of the top and bottom of the RTKA210130DE0020BU evaluation board.

1.1 Setup and Configuration

1. Disable the module by turning the SW1 switch to the OFF position, shown in [Figure 6](#).
2. Place a jumper between pin1 and 2 of 3_3V_VIN_OPTION.
3. Use the appropriate cables to connect the DC input power supply to banana sockets 12V0 and TP1GND, and the electronic load to sockets J4 and J5 for VOUT and J6 and J7 for GND. Ensure that the polarity for the power leads is correct and the input voltage is within the operating range (4.75V - 15V) of the module. Use test points TP1 (VIN) and TP2 (PGND) for accurately measuring the input voltage.
4. Turn on the input power supply.
5. Turn the switch SW1 to the ON position to enable the module.
6. Probe test points TP3 (VOUT) and TP4 (PGND) to observe the output voltage. The output voltage should read 0.85V.
7. Adjust the input voltage, V_{IN} , within the specified range and observe the output voltage. The output voltage variation should be within $\pm 8\text{mV}$.
8. Adjust the load current to within the specified range (0 - 30A) and observe the output voltage. The output voltage variation should be within $\pm 8\text{mV}$.

1.2 Configuring for 3.3V Output Application

The schematic for RTKA210130DE0020BU evaluation board is shown in [Figure 8](#). To configure for 3.3V output operation, remove R15 and populate R17 with a 499 Ω resistor. Replace R14 with a 0 Ω resistor. Connect a multimeter between TP3 (VOUT) and TP4 (GND). Apply 12V between 12V0 and TP1GND. Turn on the switch SW1 to the ON position and observe 3.3V at the output. See the *RAA210130 Datasheet* for more information on 3.3V operation.

1.3 Configuring for Using External 5V/3.3V Supplies

To configure for using external 5V/3.3V supplies, power down the board and remove the jumper on 3_3V_VIN_OPTION. Apply 5V to the V5P0 test point. Apply 3.3V to the V3P3 test point. See locations of the 3_3V_VIN_OPTION, V3P3 and V5P0 test points in [Figure 6](#).

1.4 Selecting User Configurations

The RAA210130 supports 15 preloaded configuration identifiers with one configuration ID left open. [Table 1](#) provides the R_{CONFIG} value corresponding to each configuration identifier that stores a particular V_{OUT} configuration. A total of 28 one-time programmable non-volatile memory locations exist in the controller, therefore another 13 locations are available to store new user configurations or overwrite existing ones. Only the most recent configuration for a given configuration ID is loaded. When all 28 memory locations have been written, the RAA210130 no longer accepts attempts to write to the NVM. PowerNavigator provides a simple interface to store and load configurations. The corresponding R_{CONFIG} on the RTKA210130DE0020BU evaluation board is R_{14} in the RTKA210130DE0020BU schematic (see [Figure 8](#)).

Table 1. Resistor Value to CONFIG ID Map

| R Value (Ω) | Configuration ID | Output Voltage (V) | R Value (Ω) | Configuration ID | Output Voltage (V) |
|----------------------|------------------|--------------------|----------------------|------------------|--------------------|
| 0 | 0 | 3.30 | 1650 | 8 | 1.00* |
| 162 | 1 | 3.00 | 1960 | 9 | 0.90* |
| 316 | 2 | 2.50 | 2320 | 10 | 0.85 |
| 487 | 3 | 1.80 | 2670 | 11 | 0.84* |
| 681 | 4 | 1.70 | 3090 | 12 | 0.82* |
| 887 | 5 | 1.35 | 3570 | 13 | 0.80* |
| 1130 | 6 | 1.20 | 4120 | 14 | 0.95 |
| 1370 | 7 | 1.05 | 4640 | 15 | Open |

*Note: When these configuration IDs and output voltages are selected, use EEF-GX0D471R, which is 2V rated instead of T55D477M004C0008, which is 4V rated.

See the RAA210130 Design Matrix in Table 2 for recommended minimum V_{IN} , switching frequency, output capacitors combination and other parameters for the various V_{OUT} .

Table 2. RAA210130 Design Matrix (see Figure 8)

| V_{IN} min (V) | V_{OUT} (V) | F (kHz) | C_{OUT} (μ F) | R15 (Ω) | R17 (Ω) |
|------------------|---------------|---------|-------------------------------|------------------|------------------|
| 4.75 | 0.6 | 400 | 10x47 μ F + 2x470 μ F | 2 | DNP |
| 4.75 | 0.8 | 500 | 10x47 μ F + 2x470 μ F | 2 | DNP |
| 4.75 | 0.9 | 500 | 10x47 μ F + 2x470 μ F | 2 | DNP |
| 4.75 | 1 | 500 | 10x47 μ F + 2x470 μ F | 2 | DNP |
| 4.75 | 1.05 | 500 | 10x47 μ F + 2x470 μ F | 2 | DNP |
| 4.75 | 1.2 | 550 | 7x47 μ F + 2x470 μ F | 2 | DNP |
| 4.75 | 1.35 | 600 | 7x47 μ F + 2x470 μ F | 2 | DNP |
| 4.75 | 1.5 | 600 | 7x47 μ F + 2x470 μ F | 2 | DNP |
| 4.75 | 1.8 | 600 | 7x47 μ F + 2x470 μ F | 2 | DNP |
| 8 | 2.5 | 700 | 7x47 μ F + 2x470 μ F | 2 | DNP |
| 8 | 3 | 700 | 7x47 μ F + 2x470 μ F | 2 | DNP |
| 8 | 3.3 | 700 | 15x47 μ F + 2x470 μ F | DNP | 499 |

Note: For the output capacitors in Table 2, use the following capacitor part numbers or similar.

- 47 μ F: GRT21BC80G476ME13L
- 470 μ F: T55D477M004C0008

1.5 Thermal Considerations and Current Derating

The board layout is critical so that the module can operate safely and deliver the maximum allowable power. For the board to operate properly at high ambient temperature environments and deliver full load current, the board layout needs to be carefully designed to maximize thermal performance. To achieve this, sufficient trace width, copper weight, and proper connectors have to be used.

The RTKA210130DE0020BU evaluation board is capable of operating at 30A full load current at room temperature without the need for additional cooling systems. However, if the board is to operate at elevated

ambient temperatures, the available output current may need to be derated. See the derated current curves in the *RAA210130 datasheet* to determine the maximum output current that the evaluation board can supply.

1.6 Using the PowerNavigator

RTKA210130DE0020BU can be evaluated for all features using the ISLUSBEVAL1Z dongle and PowerNavigator evaluation software. Complete the following steps to evaluate the RAA210130 with the PMBus option.

1. Install the PowerNavigator software.
2. Set the ENABLE switch to OFF.
3. Connect a load between the VOUT lug connectors (J4 and J5) and GND lug connectors (J6 and J7).
4. Connect a power supply to the VIN and GND connectors (12V0 and TP1GND). Make sure the power supply is not enabled when making the connection.
5. Turn the power supply on.
6. Connect the ISLUSBEVAL1Z dongle (USB to PMBus adapter) to the 6-pin male connector on the RTKA210130DE0020BU evaluation board.
7. Connect the supplied USB cable from the computer through USB to the ISLUSBEVAL1Z dongle.
8. Launch the PowerNavigator software. The PowerNavigator software interface is shown in [Figure 2](#). The module RAA210130 part number and I²C address (0X60) appears under Scan Attached Devices section.

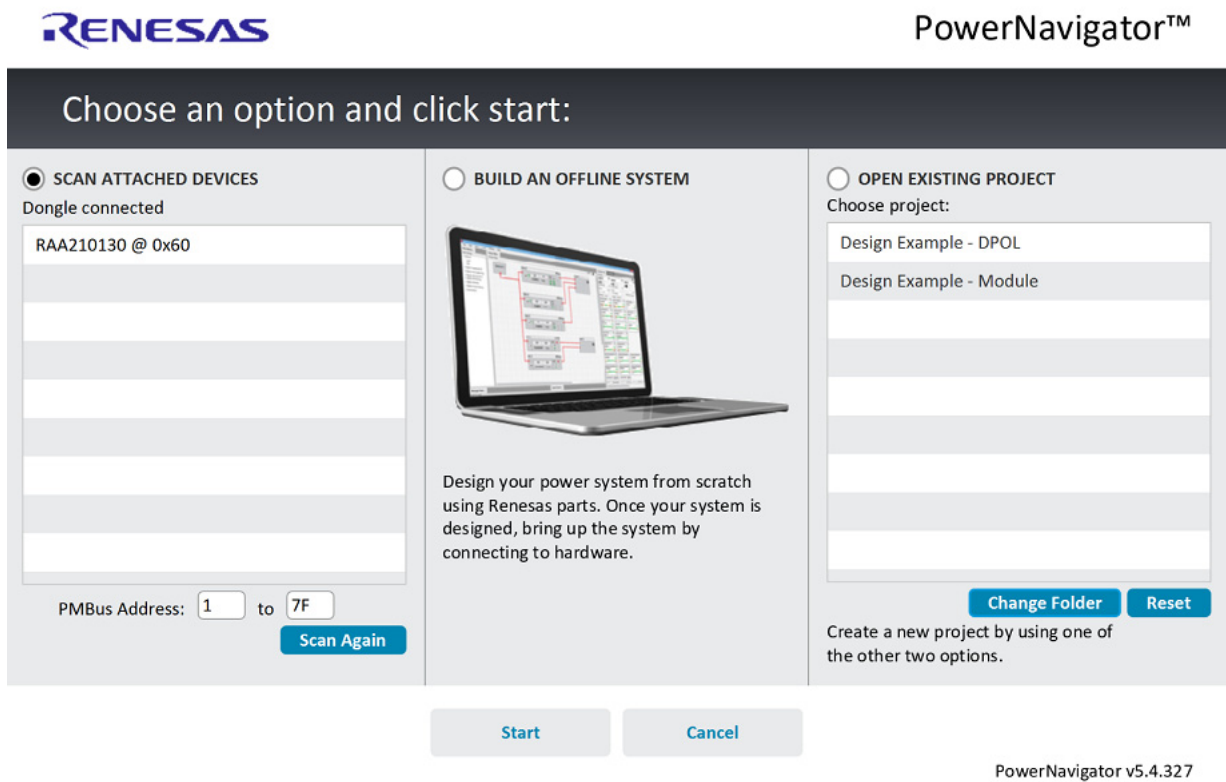


Figure 2. PowerNavigator Start Page.

- Hit the **Start** button. Hit **Read Hardware** in the next screen as shown in Figure 3. A new page shown in Figure 4 appears.

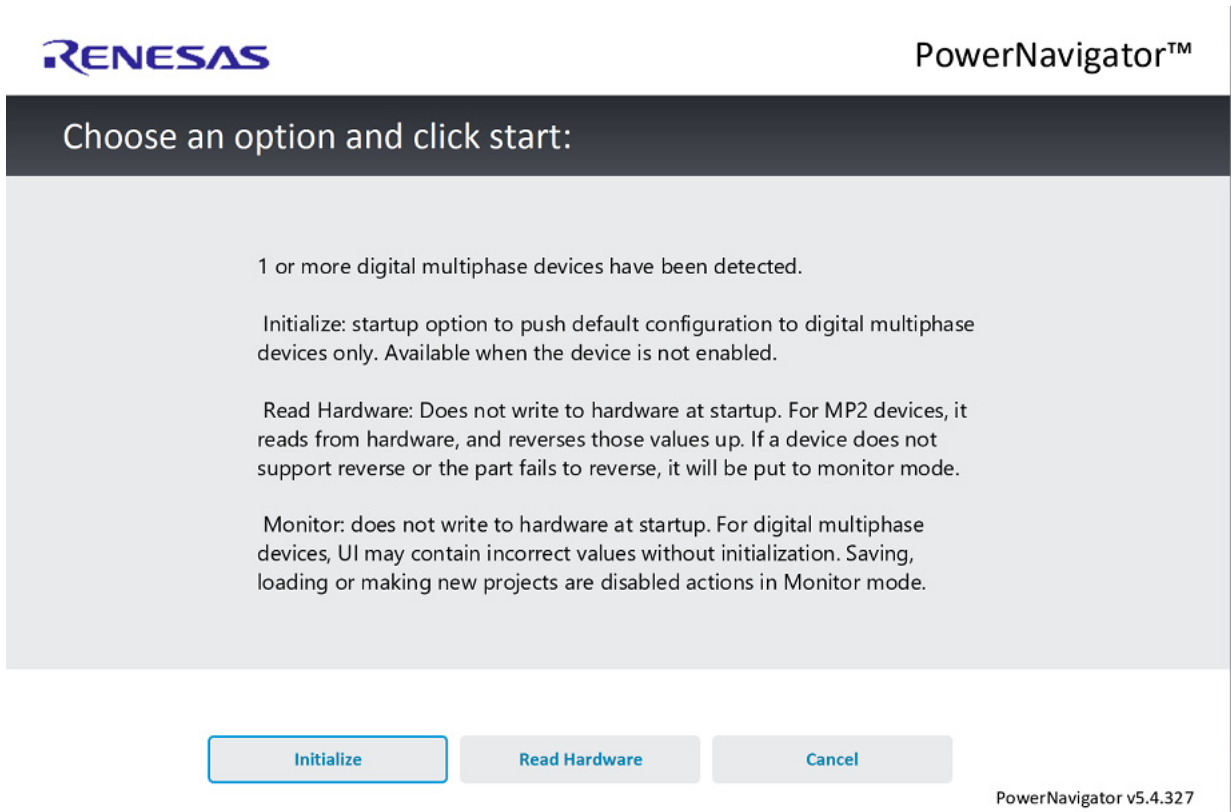


Figure 3. PowerNavigator Initialization Page.

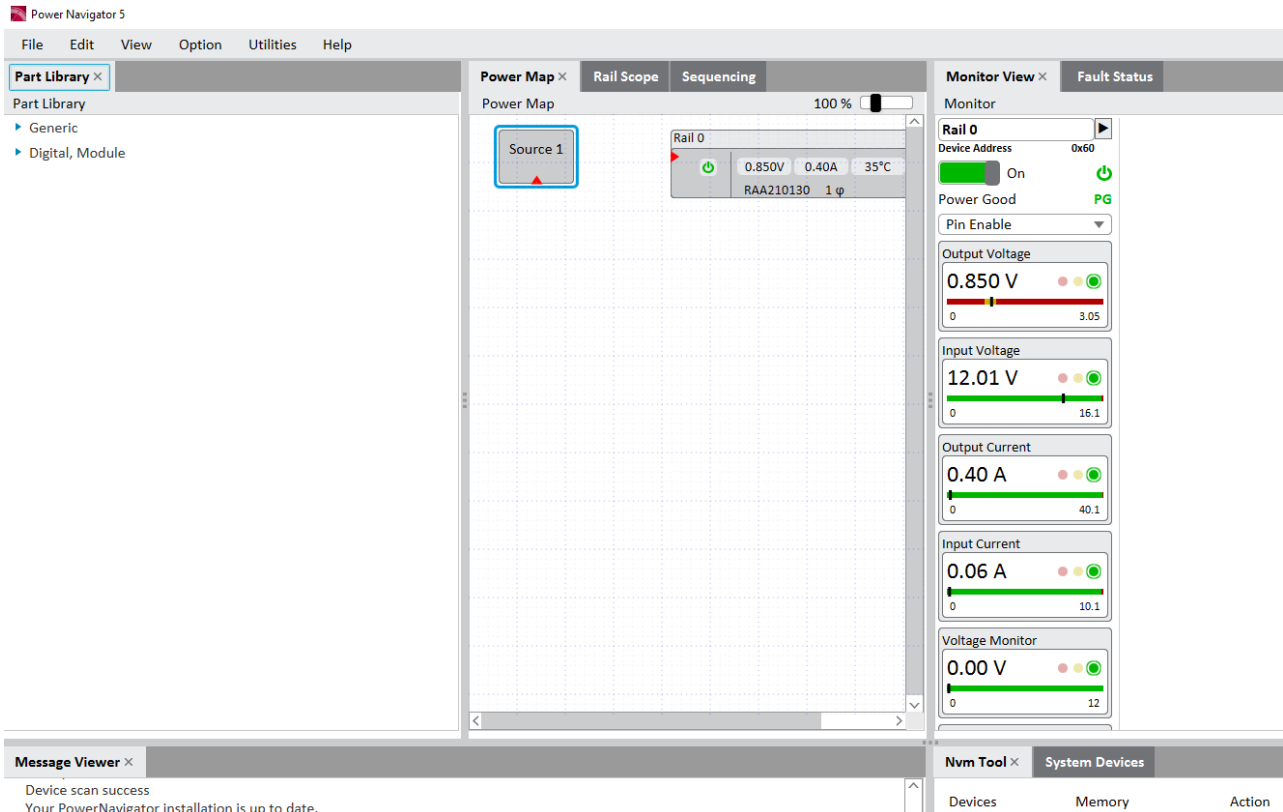


Figure 4. PowerNavigator Monitor View Page.

10. Double-click on Rail 0 box in the middle panel of the page. A configurations page shown in [Figure 5](#) appears. The items on the left panel can be selected and its associated parameters modified according to your requirements.

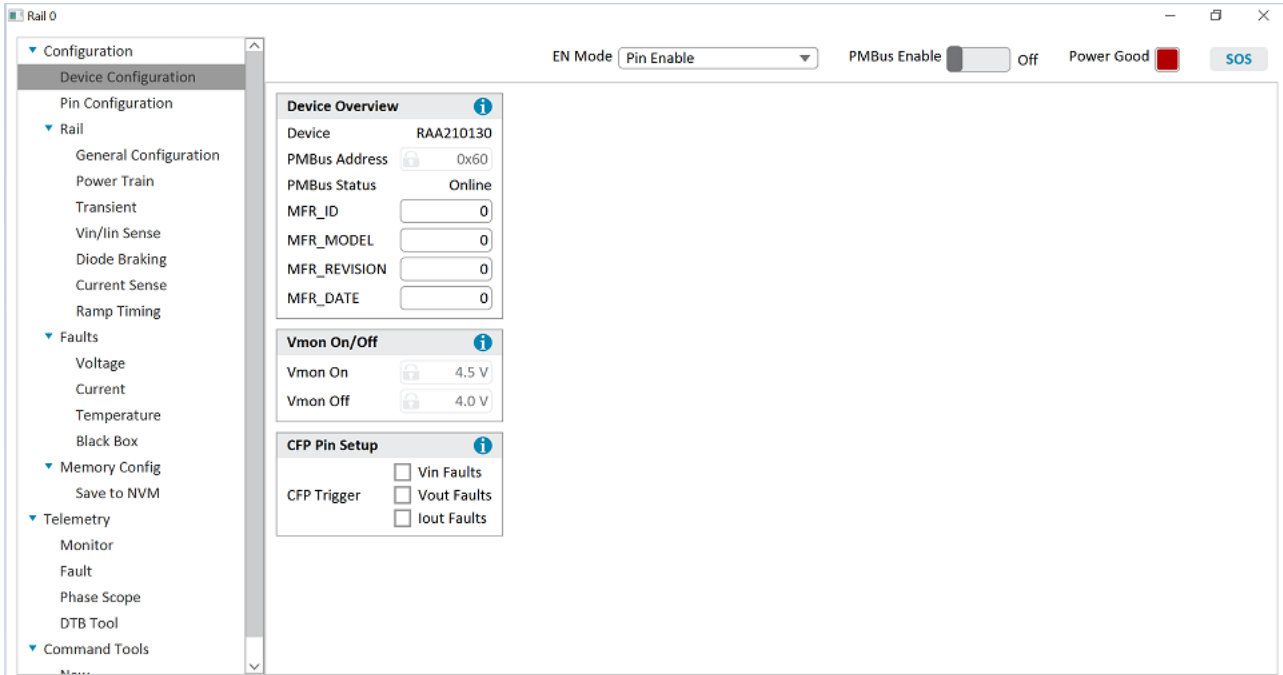


Figure 5. PowerNavigator Configurations Page.

11. PowerNavigator tutorial videos are available on the [Renesas website](#).

2. Board Design

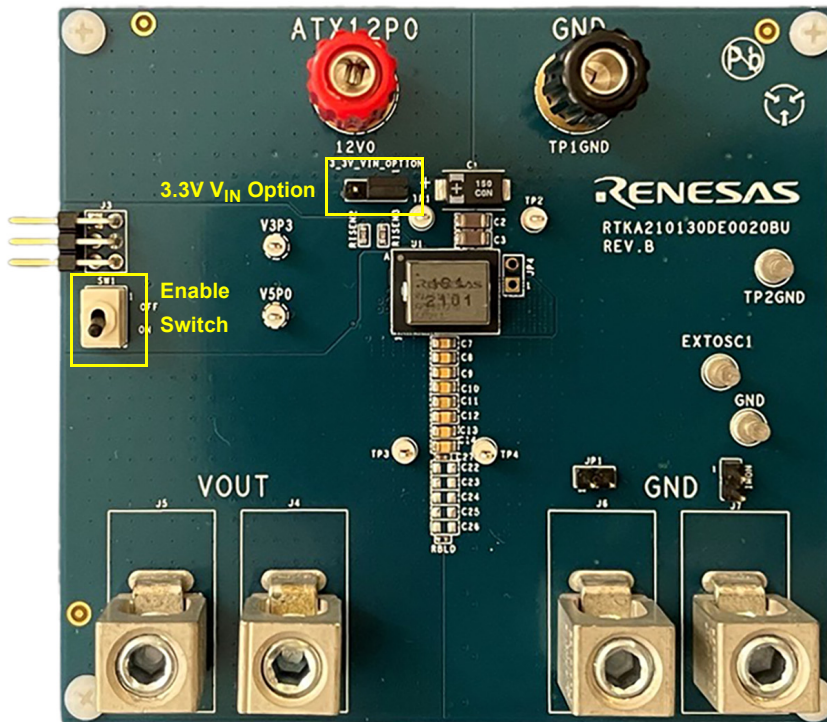


Figure 6. Top of Board

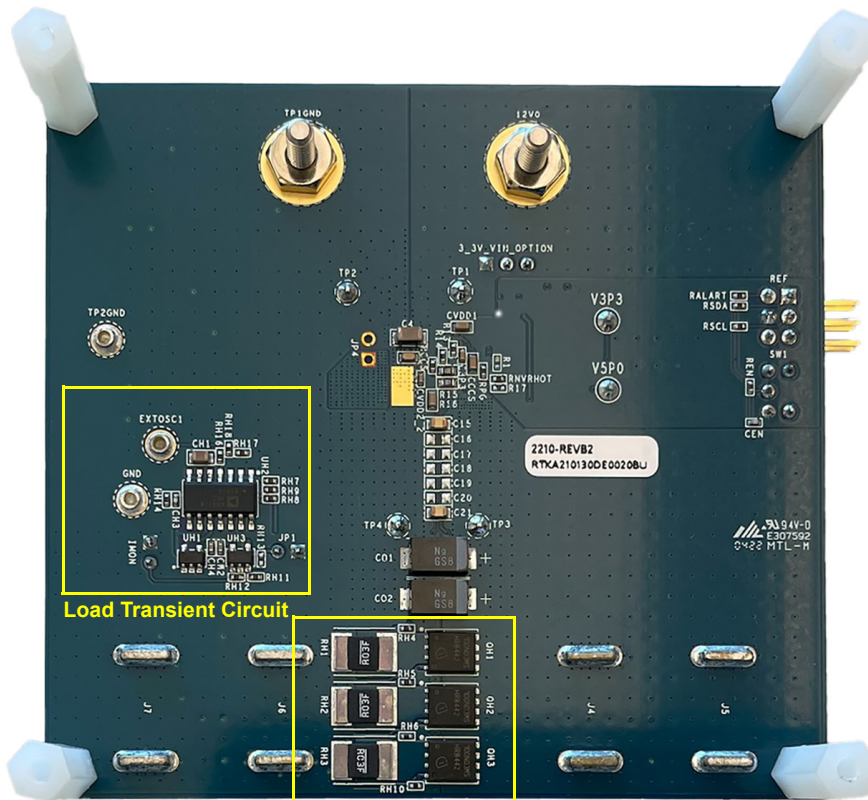


Figure 7. Bottom of Board

2.1 Layout Guidelines

The RTKA210130DE0020BU evaluation board is a 3.8in x 3.5in six-layer FR-4 board with 2oz. copper on all the layers. The board can be used as a single 30A reference design.

The RTKA210130DE0020BU evaluation board layout is optimized for electrical performance, low loss, and good thermal performance. Similar performance is obtained for designs involving the RAA210130 while adhering to the layout design tips described in the *RAA210130 datasheet*.

2.2 Schematic Diagram

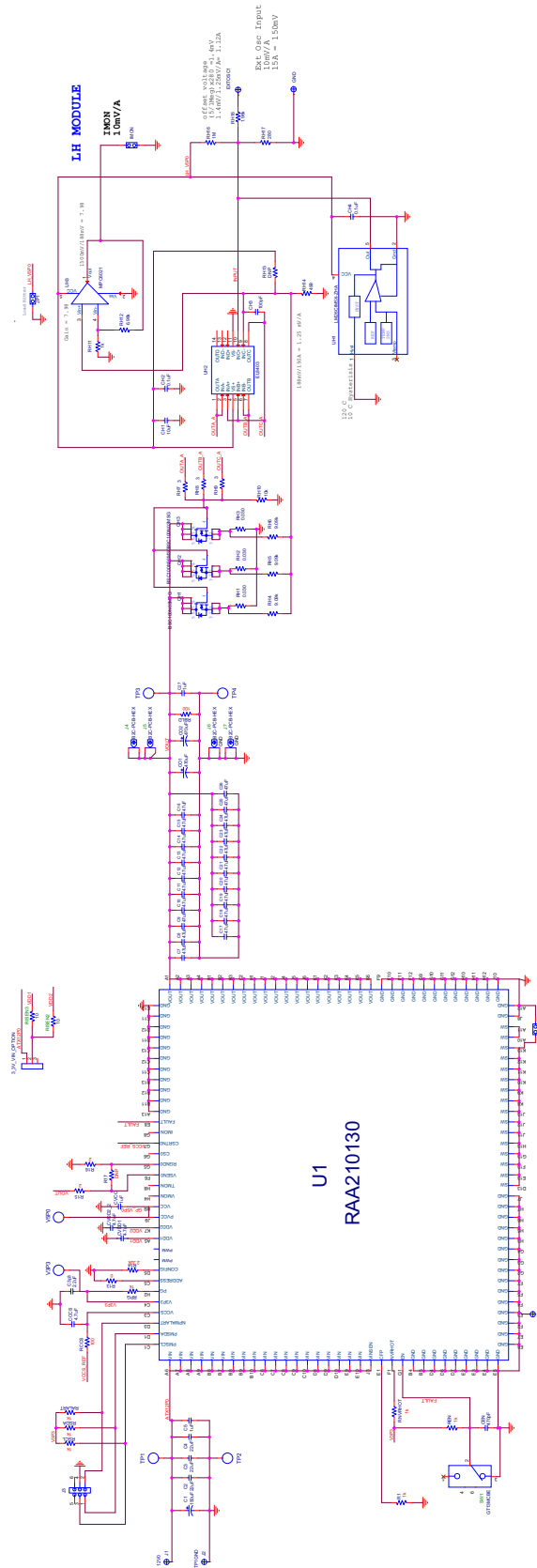


Figure 8. Schematic of RTKA210130DE0020BU

2.3 Board Layout

See Figure 9 through Figure 16 for board layout for each layer.

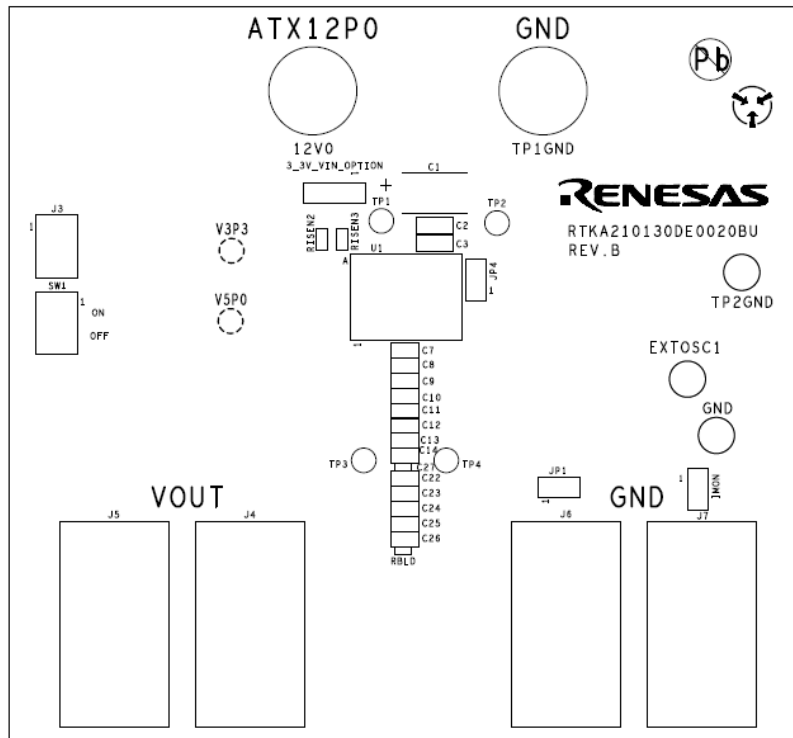


Figure 9. Silkscreen Top

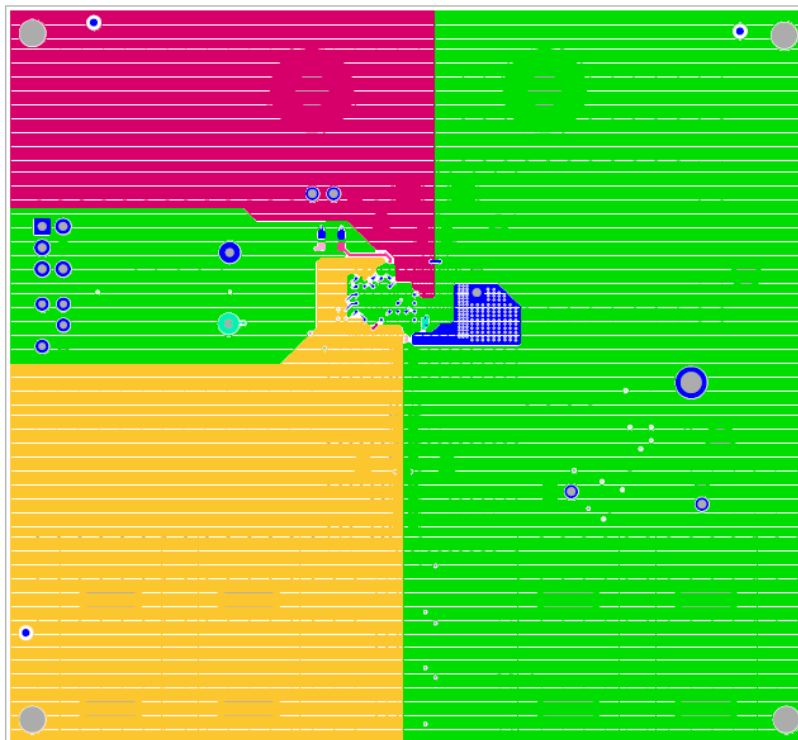


Figure 10. Top Layer Component Side

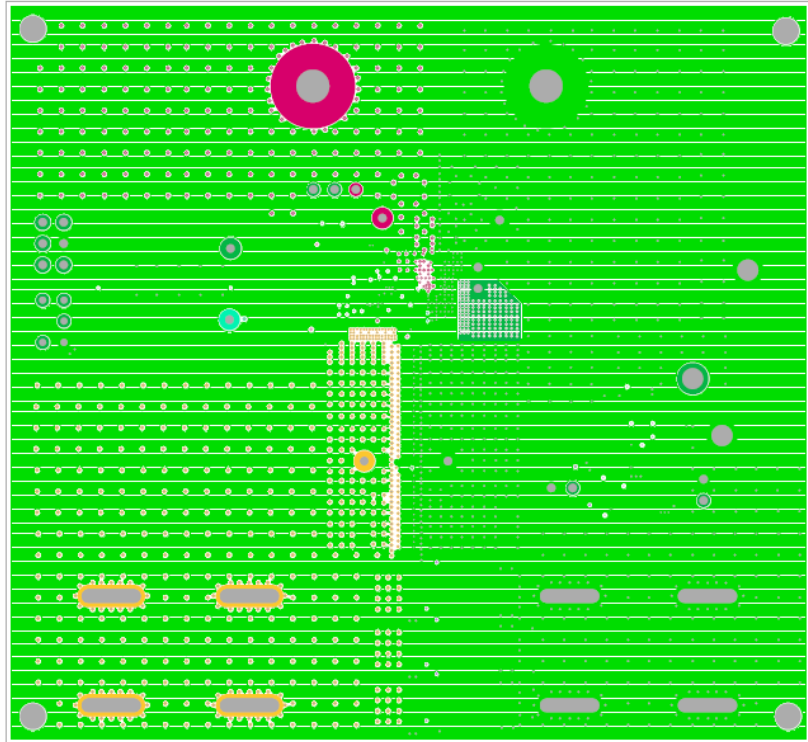


Figure 11. Inner Layer 2

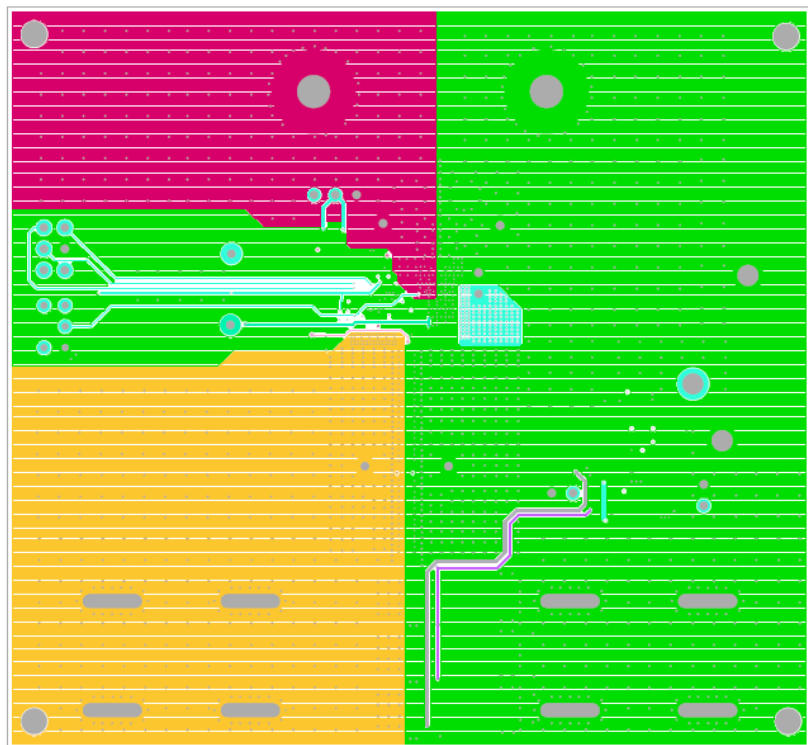


Figure 12. Inner Layer 3

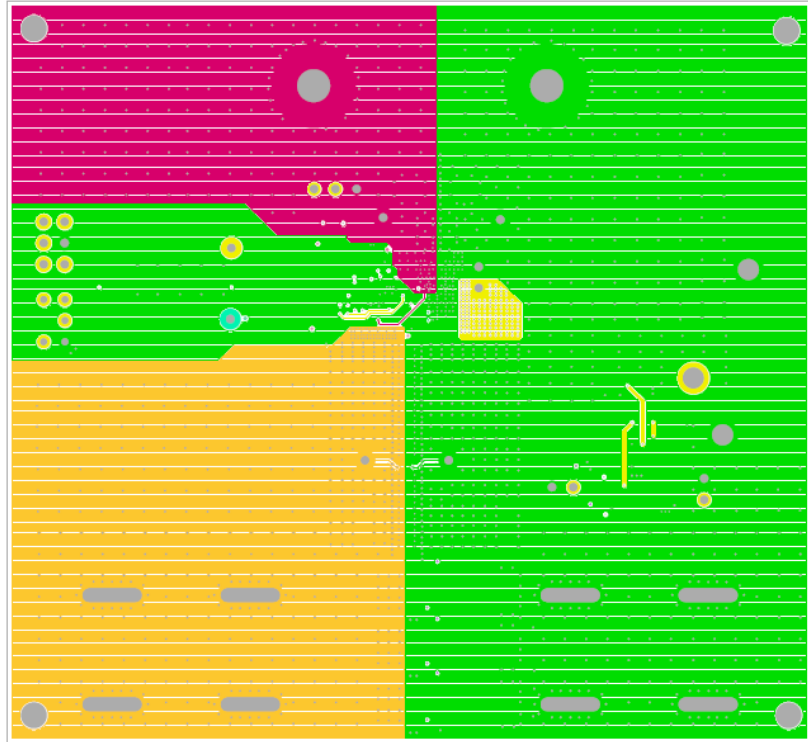


Figure 13. Inner Layer 4

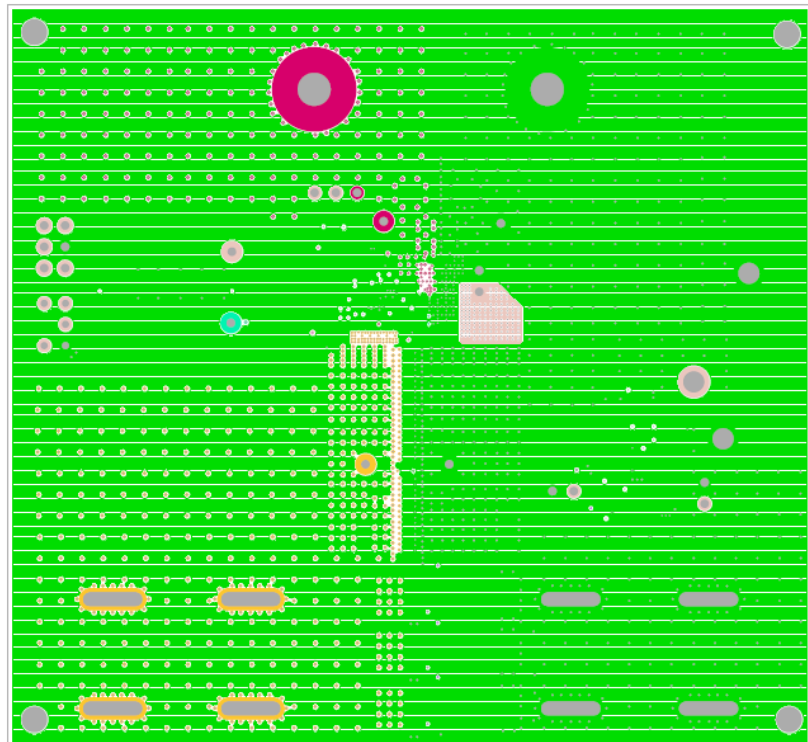


Figure 14. Inner Layer 5

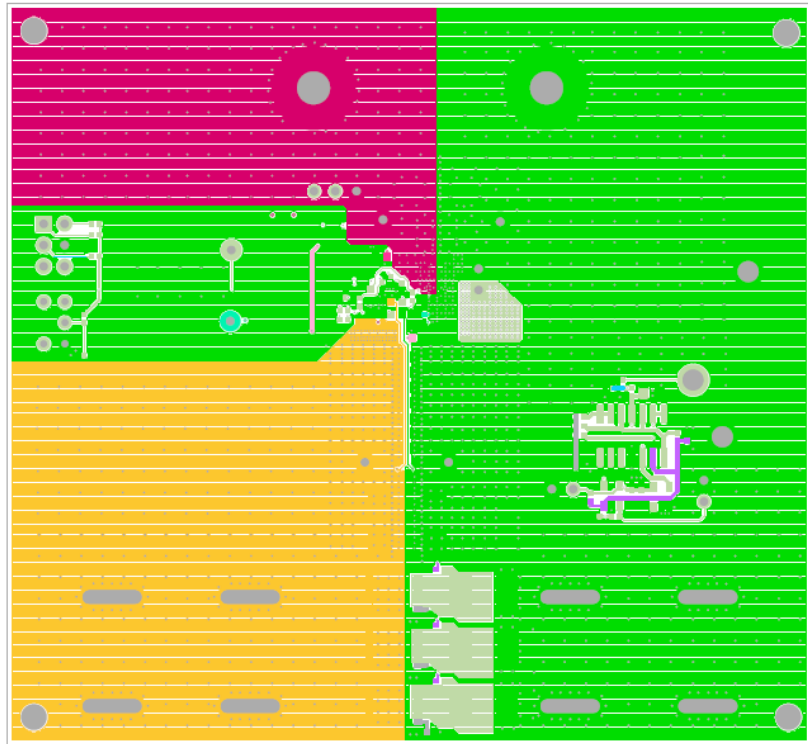


Figure 15. Bottom Layer

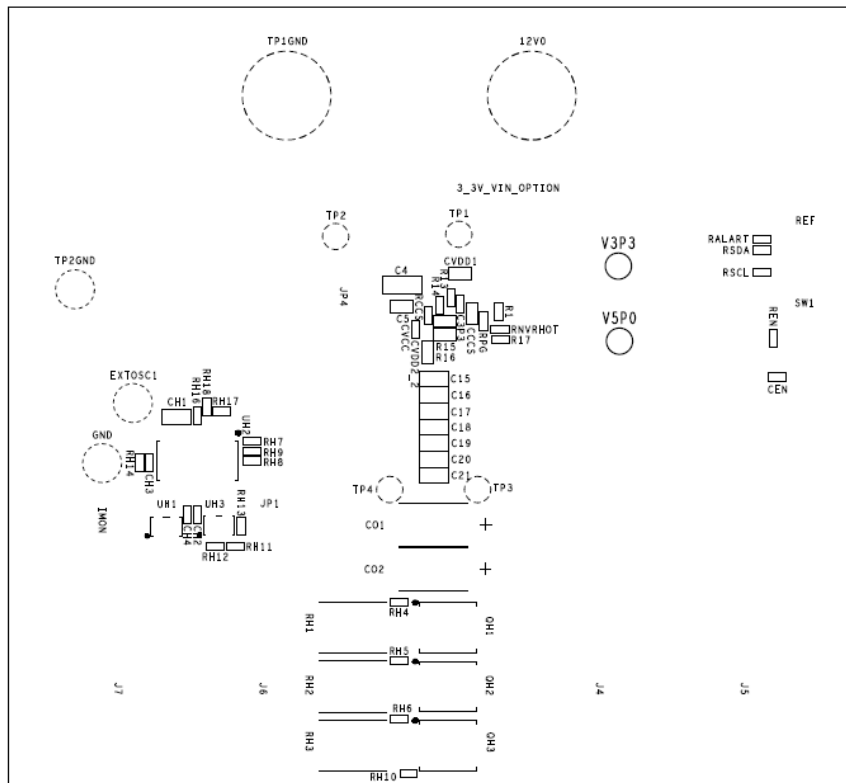


Figure 16. Silkscreen Bottom

2.4 Bill of Materials

Essential components to work with RAA210130GBG#AD0 module

| Qty | Reference Designator | Description | Manufacturer | Manufacturer Part Number |
|-----|---|--|---------------------|--------------------------|
| 1 | U1 | IC-POWER MODULE, 30A DIGITAL PMBus, 130P, BGA, 13x10mm, ROHS | Renesas Electronics | RAA210130GBG#AD0 |
| 1 | C1 | CAP-TANT.POSCAP, SMD, 7.3x4.3mm.150μF, 16V, 20%, ROHS | Panasonic | 16TDC150MYF |
| 3 | C2, C3, C4 | CAP, SMD, 1206, 22μF, 25V, 20%, X6S, ROHS | Murata | GRM31CC81E226ME11L |
| 1 | C5 | CAP-AEC-Q200, SMD, 0603, 1μF, 25V, 10%, X7R, ROHS | Murata | GCM188R71E105KA64D |
| 1 | CEN | CAP, SMD, 0402, 470pF, 50V, 5%, C0G/NP0, ROHS | Murata | GRM1555C1H471JA01J |
| 2 | C27, CVCC | CAP, SMD, 0402, 1μF, 10V, 10%, X7S, ROHS | Murata | GRM155C71A105KE11D |
| 1 | C3p3 | CAP, SMD, 0402, 2.2μF, 25V, 20%, X6S, ROHS | Murata | GRM155C81E225ME11D |
| 3 | CVDD1, CVDD2_2, CCCS | CAP-AEC-Q200, SMD, 0603, 4.7μF, 25V, 20%, X6S, ROHS | Murata | GRM188C81E475ME11D |
| 10 | C7, C8, C9, C10, C11, C12, C13, C14, C15, C21 | CAP-AEC-Q200, SMD, 0805, 47μF, 4V, 20%, X6S, ROHS | Murata | GRT21BC80G476ME13L |
| 2 | CO1, CO2 | CAP-TANT, SMD, 7.3x4.3mm, 470μF, 4V, 20%, 8mΩ DCR, POLYMER, ROHS | Vishay/Sprague | T55D477M004C0008 |
| 2 | RCCS, RBLD | RES, SMD, 0402, 100Ω, 1/16W, 1%, TF, ROHS | Yageo | RC0402FR-07100RL |
| 2 | R15, R16 | RES, SMD, 0603, 2Ω, 1/16W, 1%, TF, ROHS | Yageo | RC0603FR-072RL |
| 1 | R13, | RES, SMD, 0402, 0Ω, 1/16W, 5%, TF, ROHS | Venkel | CR0402-16W-00T |
| 1 | R14 | RES-AEC-Q200,SMD, 0402, 2.32K, 1/16W, 1%,TF, ROHS | STACKPOLE | RMCF0402FT2K32 |
| 1 | REN | RES, SMD, 0402, 1k, 1/16W, 1%, TF, ROHS | Yageo | RC0402FR-071KL |

Additional non-essential components, but necessary for RTKA210130DE0020BU board to work.

| Qty | Reference Designator | Description | Manufacturer | Manufacturer Part |
|-----|--|--|--------------|-------------------|
| 2 | RISEN2, RISEN3 | RES, SMD, 0603, 10Ω, 1/10W, 1%, TF, ROHS | Yageo | RC0603FR-0710RL |
| 7 | R1, RH11, RSDA, RSCL, RPG, RNVRHOT, RALART | RES, SMD, 0402, 1k, 1/16W, 1%, TF, ROHS | Yageo | RC0402FR-071KL |
| 3 | RH1, RH2, RH3 | RES-AEC-Q200, SMD, 2816, 0.03Ω, 2W, 1%, CURR.SENSE, ROHS | Vishay/Dale | WSL2816R0300FEH |

| Qty | Reference Designator | Description | Manufacturer | Manufacturer Part |
|-----|--------------------------------|---|----------------------|--------------------|
| 3 | RH4, RH5, RH6 | RES-AEC-Q200, SMD, 0402, 9.09k, 1/16W, 1%, TF, ROHS | Vishay/Dale | CRCW04029K09FKED |
| 3 | RH7, RH8, RH9 | RES-AEC-Q200, SMD, 0402, 3Ω, 1/16W, 1%, TF, ROHS | Vishay/Dale | CRCW04023R00FKED |
| 1 | RH10 | RES-AEC-Q200, SMD, 0402, 10k, 1/10W, 1%, TF, ROHS | Panasonic | ERJ-2RKF1002X |
| 1 | RH12 | RES-AEC-Q200, SMD, 0402, 6.98k, 1/16W, 1%, TF, ROHS | Vishay/Dale | CRCW04026K98FKED |
| 1 | RH14 | RES-AEC-Q200, SMD, 0402, 499Ω, 1/16W, 1%, TF, ROHS | Vishay/Dale | CRCW0402499RFKED |
| 1 | RH16 | RES, SMD, 0402, 1M, 1/16W, 1%, TF, ROHS | Yageo | RC0402FR-071ML |
| 1 | RH17 | RES-AEC-Q200, SMD, 0402, 280Ω, 1/16W, 1%, TF, ROHS | Vishay/Dale | CRCW0402280RFKED |
| 1 | RH18 | RES, SMD, 0402, 1.96k, 1/16W, 1%, TF, ROHS | Yageo | RC0402FR-071K96L |
| 1 | CH1 | CAP, SMD, 0805, 10μF, 25V, 20%, X6S, ROHS | Murata | GRM21BC81E106ME11L |
| 1 | CH3 | CAP, SMD, 0402, 100pF, 50V, 10%, X7R, ROHS | Yageo | CC0402KRX7R9BB101 |
| 2 | CH2, CH4 | CAP, SMD, 0402, 0.1μF, 25V, 10%, X7R, ROHS | Murata | GRM155R71E104KE14D |
| 3 | QH1, QH2, QH3 | TRANSIST-MOS, N-CHANNEL, 8P, PG-TDSON-8, 30V, 44A, ROHS | Infineon Technology | BSC100N03MS G |
| 1 | UH1 | IC-THERMOSTAT PRE-SET, SMD, 5P, SOT23-5, 120C TRIP PT, ROHS | Texas Instruments | LM26CIM5-ZHA/NOPB |
| 1 | UH2 | IC-OP AMP, 4-CHANNEL, R/R, 14P, SOIC, ROHS | Analog Devices | ADA4891-4ARZ-R7 |
| 1 | UH3 | IC-OP AMP, SINGLE, R/R, SMD, 5P, SOT-23-5, 2.5V, 1mA, ROHS | Microchip Technology | MCP6021T-E/OT |
| 1 | 12V0 | CONN-GEN, BIND.POST, INSUL-RED, THMBNUT-GND | Johnson Components | 111-0702-001 |
| 1 | TP1GND | CONN-GEN, BIND.POST, INSUL-BLK, THMBNUT-GND | Johnson Components | 111-0703-001 |
| 3 | EXTOSC1, GND, TP2GND | CONN-DBL TURRET, TH, 0.218x0.109 PCB MNT, TIN/BRASS, ROHS | Keystone | 1502-2 |
| 6 | TP1, TP2, TP3, TP4, V3P3, V5P0 | CONN-MINI TEST POINT, VERTICAL, WHITE, ROHS | Keystone | 5002 |
| 1 | 3_3V_VIN_OPTION | CONN-HEADER, 1x3, BREAKAWY 1x36, 2.54mm, ROHS | BERG/FCI | 68000-236HLF |
| 1 | J3 | CONN-HEADER, TH, 6P, 2x3, R/A, 2.54mm, 0.230x0.120in.ROHS | BERG/FCI | 68021-206HLF |
| 2 | JP1, IMON | CONN-HEADER, 1x2, RETENTIVE, 2.54mm, 0.230X 0.120, ROHS | BERG/FCI | 69190-202HLF |

| Qty | Reference Designator | Description | Manufacturer | Manufacturer Part |
|-----|---|--|---------------------------------|--------------------|
| 1 | 3_3V_VIN_ OPTION-Pins 1-2 | CONN-JUMPER, SHUNT, 2P, 2.54mmPITCH, BLK, 6mm, OPEN, ROHS | Sullins | SPC02SYAN |
| 1 | SW1 | SWITCH-TOGGLE, THRU-HOLE, 5PIN, SPDT, 3POS, ON-OFF-ON, ROHS | C&K Components | GT13MCBE |
| 4 | Four corners | SCREW, 4-40x1/4in, PANHEAD, NYLON, PHILLIPS, ROHS | Building Fasteners | NY PMS 440 0025 PH |
| 4 | Four corners | STANDOFF, 4-40x3/4in, F/F, HEX, NYLON, ROHS | Keystone | 1902D |
| 4 | J4, J5, J6, J7 | HDWARE-WIRE LUG, TH, 11.8x10.3mm, HEX SCREW, 2-14AWG, ROHS | International Hydraulics Inc | B2C-PCB-HEX |
| 0 | C16, C17, C18, C19, C20, C22, C23, C24, C25, C26 | Do Not Populate Or Purchase | | |
| 0 | JP4 | Do Not Populate Or Purchase | | |
| 0 | R17, RH13 | Do Not Populate Or Purchase | | |

3. Typical Performance Graphs

The following data was acquired using the RTKA210130DE0020BU evaluation board at +25°C ambient and free air 0LFM.
 $V_{IN} = VDD1 = VDD2 = 12V$, $T_A = +25^\circ C$, unless otherwise stated.

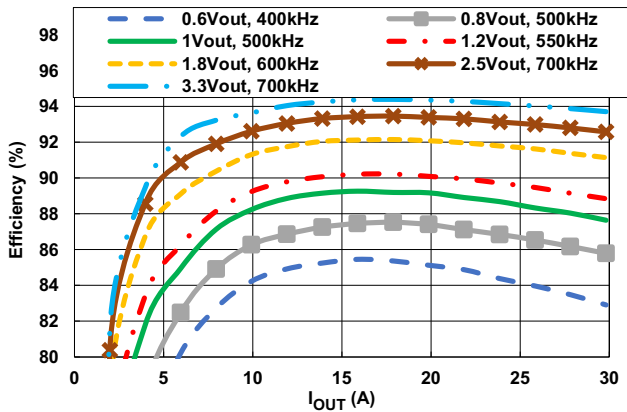


Figure 17. Efficiency vs Load Current at $V_{IN} = 12V$, with Internal 5V and 3.3V Supply

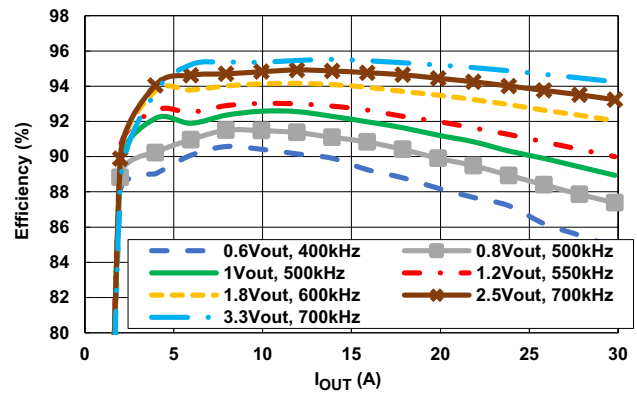


Figure 18. Efficiency vs Load Current at $V_{IN} = 12V$, with External 5V and 3.3V Supply

The following data was acquired using the RTKA210130DE0020BU evaluation board at +25°C ambient and free air 0LFM. $V_{IN} = V_{DD1} = V_{DD2} = 12V$, $T_A = +25^\circ C$, unless otherwise stated. (Cont.)

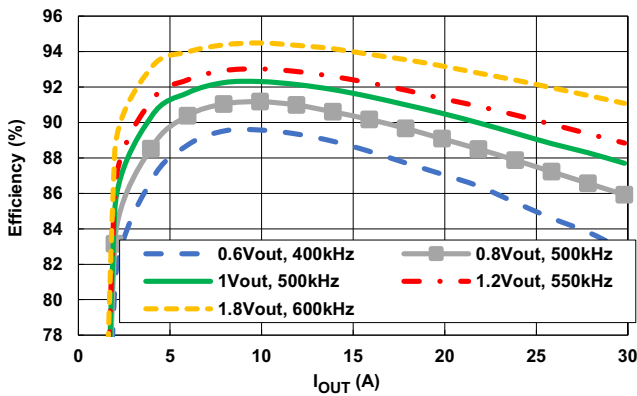


Figure 19. Efficiency vs Load Current at $V_{IN} = 5V$, with Internal 5V and 3.3V Supply

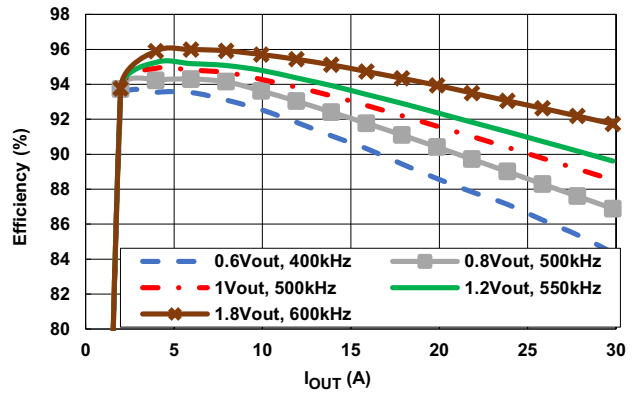


Figure 20. Efficiency vs Load Current at $V_{IN} = 5V$, with External 5V and 3.3V Supply

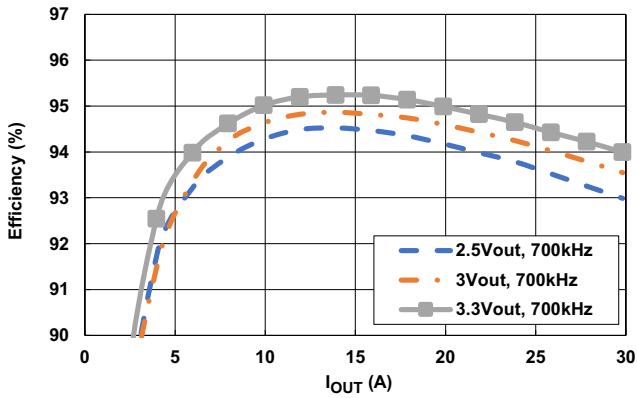


Figure 21. Efficiency vs Load Current at $V_{IN} = 8V$, with Internal 5V and 3.3V Supply

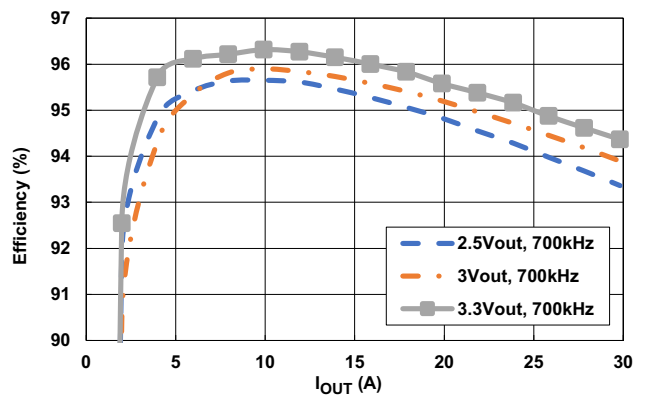


Figure 22. Efficiency vs Load Current at $V_{IN} = 8V$, with External 5V and 3.3V Supply

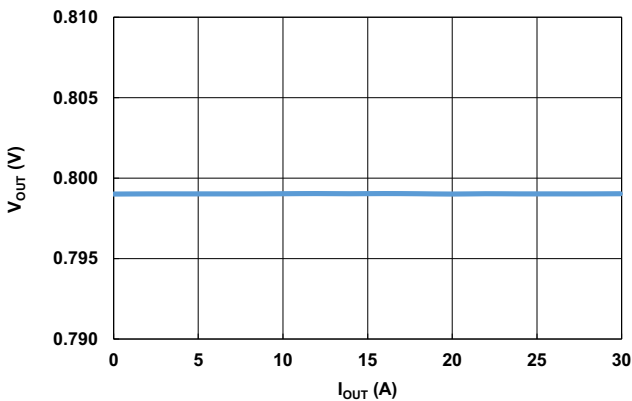


Figure 23. Load Regulation at $V_{IN} = 12V$, $V_{OUT} = 0.8V$

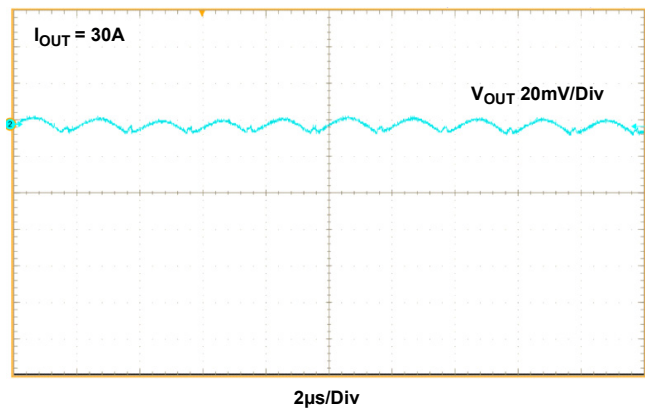


Figure 24. Output Ripple, $V_{IN} = 12V$, $V_{OUT} = 0.8V$, $I_{OUT} = 30A$, $f_{SW} = 500kHz$, $C_{OUT} = 10 \times 47\mu F$ Ceramic + $2 \times 470\mu F$ Polymer Capacitor

The following data was acquired using the RTKA210130DE0020BU evaluation board at +25°C ambient and free air 0LFM. $V_{IN} = V_{DD1} = V_{DD2} = 12V$, $T_A = +25^\circ C$, unless otherwise stated. (Cont.)

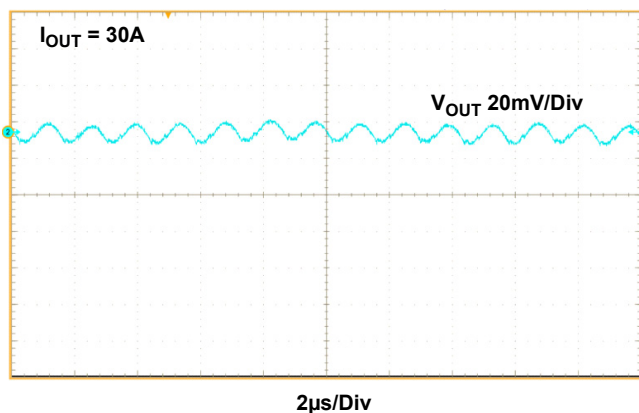


Figure 25. Output Ripple, $V_{IN} = 12V$, $V_{OUT} = 3.3V$, $C_{OUT} = 15 \times 47\mu F$ Ceramic + $2 \times 470\mu F$ Polymer Capacitor

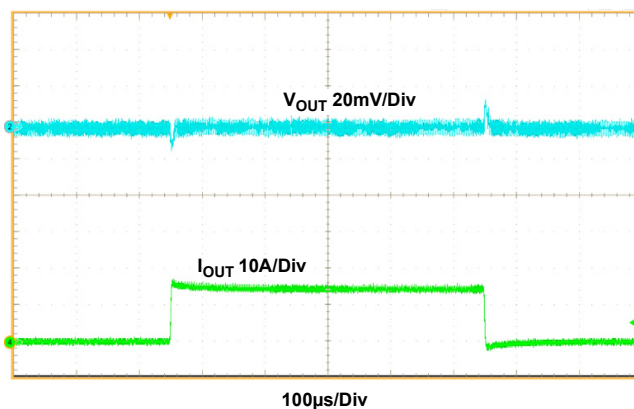


Figure 26. Transient Response, $C_{IN} = 12V$, $V_{OUT} = 0.8V$, 0A to 15A to 0A, $5A/\mu s$ Step Load, $C_{OUT} = 10 \times 47\mu F$ Ceramic + $2 \times 470\mu F$ Polymer Capacitor

Operating condition: $V_{IN} = V_{DD1} = V_{DD2} = 12V$, $T_A = +25^\circ C$, unless otherwise stated.

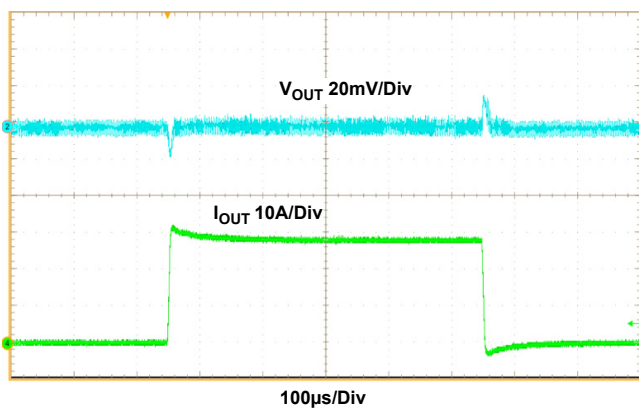


Figure 27. Transient Response, $V_{IN} = 12V$, $V_{OUT} = 0.8V$, 0A to 30A to 0A, $5A/\mu s$ Step Load, $C_{OUT} = 10 \times 47\mu F$ Ceramic + $2 \times 470\mu F$ Polymer Capacitor

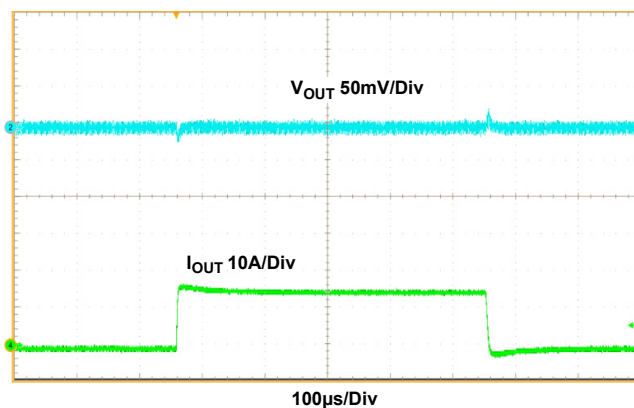


Figure 28. Transient Response, $V_{IN} = 12V$, $V_{OUT} = 1.2V$, 0A to 15A, $5A/\mu s$ Step Load, $C_{OUT} = 7 \times 47\mu F$ Ceramic + $2 \times 470\mu F$ Polymer Capacitor

Operating condition: $V_{IN}=V_{DD1}=V_{DD2}=12V$, $T_A = +25^{\circ}C$, unless otherwise stated. (Cont.)

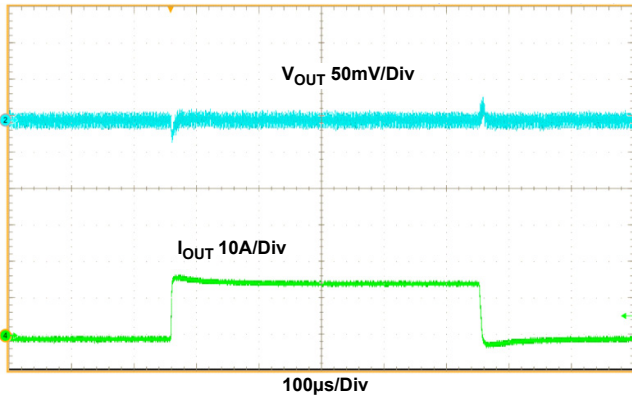


Figure 29. Transient Response, $V_{OUT} = 1.8V$, 0A to 15A, 5A/µs Step Load, $C_{OUT} = 7 \times 47\mu F$ Ceramic + $2 \times 470\mu F$ Polymer Capacitor

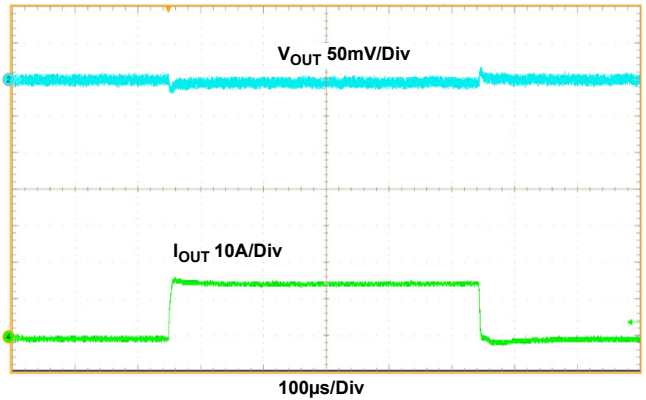


Figure 30. Transient Response, $V_{OUT} = 3.3V$, 0A to 15A, 5A/µs Step Load, $C_{OUT} = 15 \times 47\mu F$ Ceramic + $2 \times 470\mu F$ Polymer Capacitor

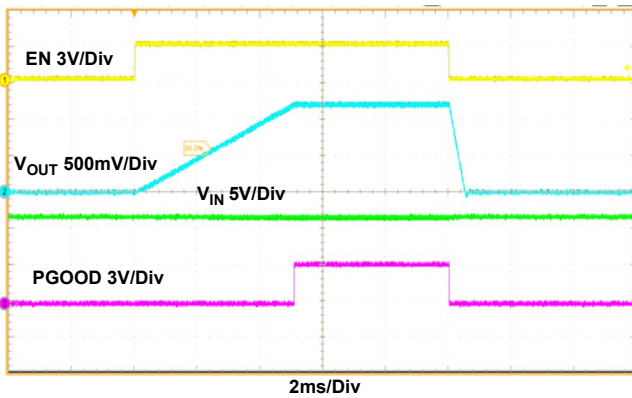


Figure 31. Start-Up and Shutdown Waveform By Pin Enable, $V_{IN} = 12V$, $V_{OUT} = 1.2V$, $I_{OUT} = 30A$.

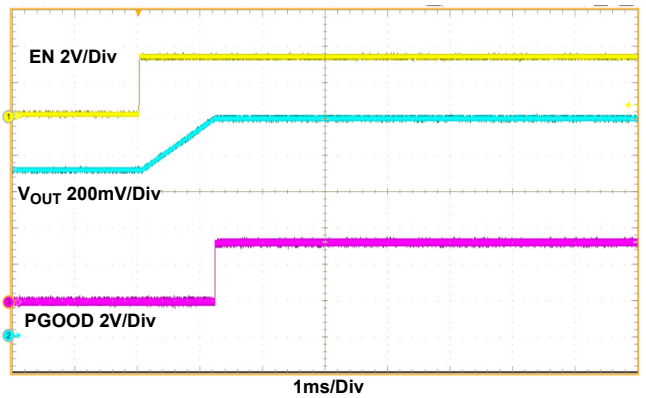


Figure 32. Pre-biased Startup Waveform, $V_{IN} = 12V$, Pre-biased Voltage = 0.9V, $V_{OUT} = 1.2V$, $I_{OUT} = 0A$.

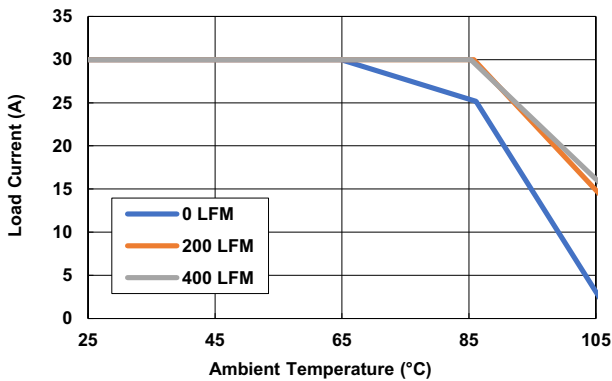


Figure 33. Derating Curve, $V_{IN} = 12V$, $V_{OUT} = 0.8V$, $f_{SW} = 500kHz$.

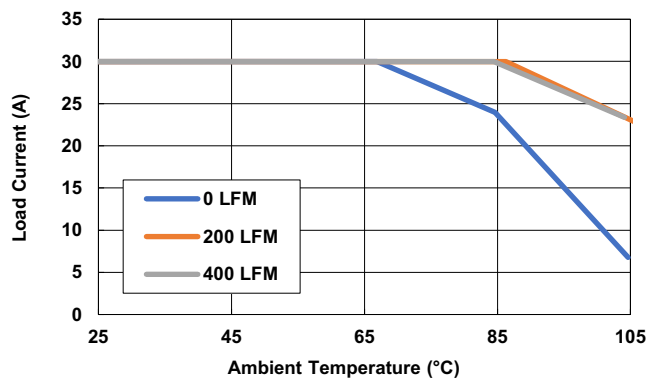


Figure 34. Thermal Derating Curve, $V_{IN} = 5V$, $V_{OUT} = 1.2V$, $f_{SW} = 550kHz$.

Operating condition: $V_{IN}=V_{DD1}=V_{DD2}=12V$, $T_A = +25^{\circ}C$, unless otherwise stated. (Cont.)

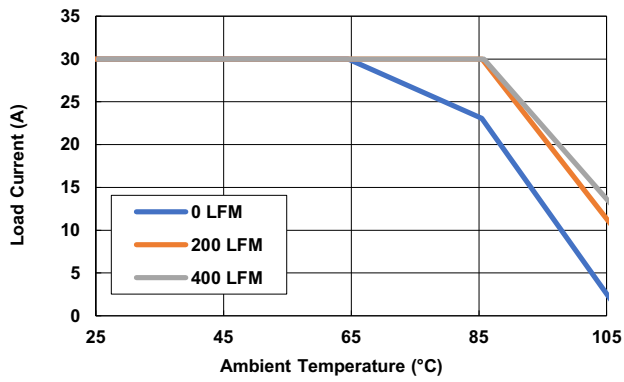


Figure 35. Derating Curve, $V_{IN} = 12V$, $V_{OUT} = 1.8V$, $f_{SW} = 600kHz$.

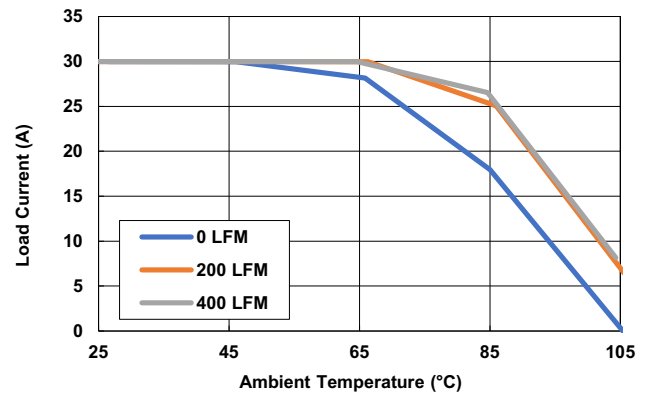


Figure 36. Thermal Derating Curve, $V_{IN} = 12V$, $V_{OUT} = 3.3V$, $f_{SW} = 700kHz$.

4. Ordering Information

| Part Number | Description |
|--------------------|--|
| RTKA210130DE0020BU | RAA210130 single 30A power module evaluation board |

5. Revision History

| Revision | Date | Description |
|----------|--------------|--|
| 1.01 | Jul 1, 2022 | Updated specification V_{OUT} to 0.85V. Updated 1.1 Setup and Configuration, 1.2 Configuring for 3.3V Output Application. Updated Table 1, Schematic, and the BOM. Updated description of Figure 19 and 20. |
| 1.00 | May 23, 2022 | Initial release |

IMPORTANT NOTICE AND DISCLAIMER

RENESAS ELECTRONICS CORPORATION AND ITS SUBSIDIARIES (“RENESAS”) PROVIDES TECHNICAL SPECIFICATIONS AND RELIABILITY DATA (INCLUDING DATASHEETS), DESIGN RESOURCES (INCLUDING REFERENCE DESIGNS), APPLICATION OR OTHER DESIGN ADVICE, WEB TOOLS, SAFETY INFORMATION, AND OTHER RESOURCES “AS IS” AND WITH ALL FAULTS, AND DISCLAIMS ALL WARRANTIES, EXPRESS OR IMPLIED, INCLUDING, WITHOUT LIMITATION, ANY IMPLIED WARRANTIES OF MERCHANTABILITY, FITNESS FOR A PARTICULAR PURPOSE, OR NON-INFRINGEMENT OF THIRD PARTY INTELLECTUAL PROPERTY RIGHTS.

These resources are intended for developers skilled in the art designing with Renesas products. You are solely responsible for (1) selecting the appropriate products for your application, (2) designing, validating, and testing your application, and (3) ensuring your application meets applicable standards, and any other safety, security, or other requirements. These resources are subject to change without notice. Renesas grants you permission to use these resources only for development of an application that uses Renesas products. Other reproduction or use of these resources is strictly prohibited. No license is granted to any other Renesas intellectual property or to any third party intellectual property. Renesas disclaims responsibility for, and you will fully indemnify Renesas and its representatives against, any claims, damages, costs, losses, or liabilities arising out of your use of these resources. Renesas' products are provided only subject to Renesas' Terms and Conditions of Sale or other applicable terms agreed to in writing. No use of any Renesas resources expands or otherwise alters any applicable warranties or warranty disclaimers for these products.

(Rev.1.0 Mar 2020)

Corporate Headquarters

TOYOSU FORESIA, 3-2-24 Toyosu,
Koto-ku, Tokyo 135-0061, Japan
www.renesas.com

Contact Information

For further information on a product, technology, the most up-to-date version of a document, or your nearest sales office, please visit:
www.renesas.com/contact/

Trademarks

Renesas and the Renesas logo are trademarks of Renesas Electronics Corporation. All trademarks and registered trademarks are the property of their respective owners.