

Renesas Ready Ecosystem Partner Solution Commotech CAP TOUCH Solution



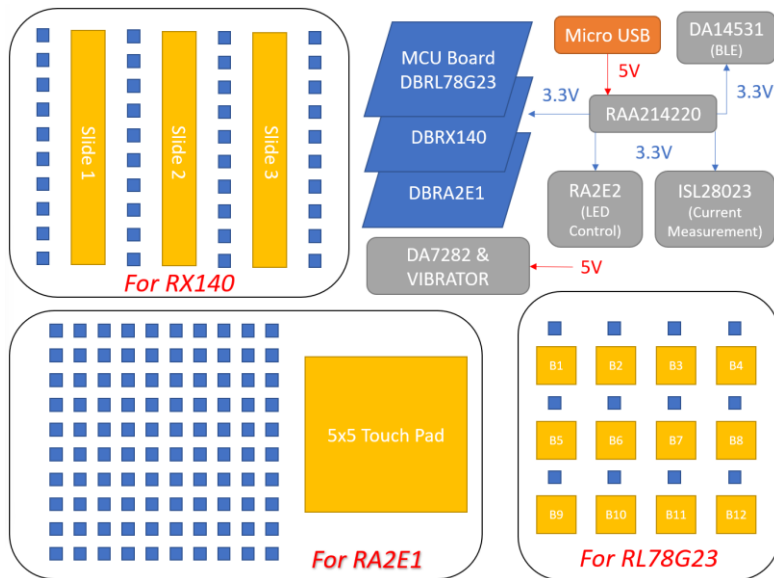
Solution Summary

Renesas Capacitive Touch Demo Kits from Commotech are developed using three Renesas MCUs [RL78/G23](#), [RX140](#), [RA2E1](#) integrating on-chip cap touch controller. Evaluation of touch detection and haptic feedback (touch-key, slider, touchpad) is available. This solution is designed for early development and functional evaluation.

Features/Benefits

- RL78/G23 – touch-key detection
- RX140 – slider detection
- RA2E1 – touchpad detection
- Command via I2C bus to control Main Cap Touch Solution Board LED
- Haptic feedback
- Bluetooth Low Energy communication

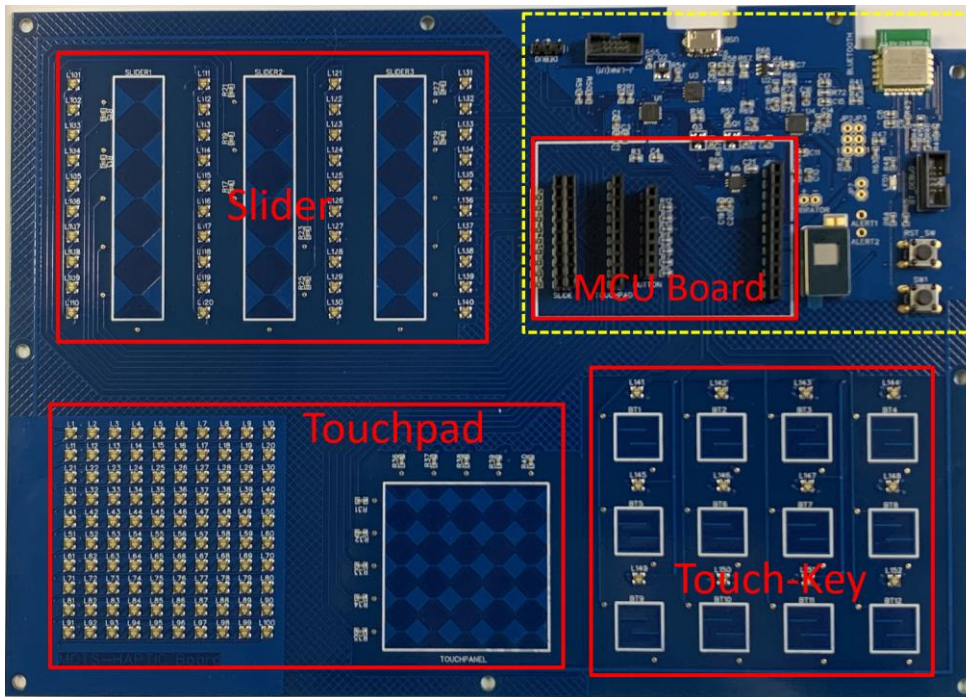
Diagrams/Graphics



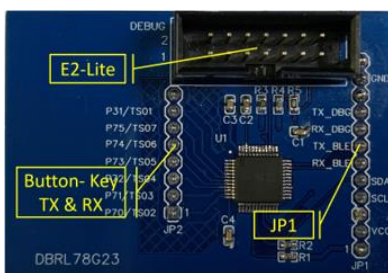
Target Markets and Applications

- Industrial Controls
- Smart Home/ IoT
- Home Appliances
- Medical Devices
- Consumer Electronics

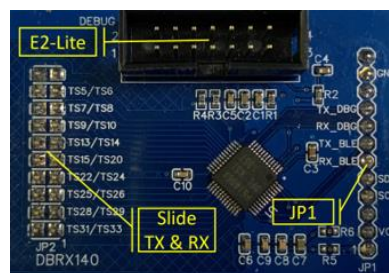
■ Touch Board + BLE



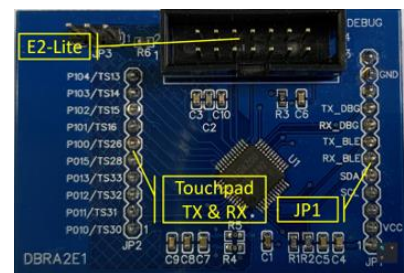
■ MCU Board



RL78G23



RX140



RA2E1

About Commotech: www.commotec.com.tw

For recent years, Commotech pace on improving LED dimming control technical supporting scheme, and provides from development to mass production service to famous customers on gaming PC, MB, VGA, fan, CAP Touch, BLE and related peripherals. Commotech solution integrated LED control MCU with PC GUI software and OBM's certification which can help customers to provide end products time to market.

In addition, Commotech cooperated with customers to develop multi-pack Li-ion battery charger with significant sales result, if there is a requirement for low power component, Commotech can also be your choice.

■ Contact-Renesas

Renesas Electronics Taiwan Co., Ltd.

Contact: Adam Liu adam.liu.te@renesas.com

Address: 13th FL., No. 363, Fu Shing N. Rd., Taipei 105401 Taiwan R.O.C

Website: Renesas Electronics Corporation