

RZ Ecosystem Partner Solution Novotech RZ/G2L System On Module



Solution Summary

Novotech RZ/G2L Ariaboard integrates Renesas [RZ/G2L](#) low power, dual core Cortex-A55 Industrial-grade MPU with 1Gbps network card and Audio Codec. In addition, RZ/G2L is also equipped with 3D graphic accelerator and other rich industrial interfaces, such as CAN, PCI-E, MIPI, RGB I/F which are suitable for HMI, high-precision instrument, server, medical, and gateway applications. We also provide open source OpenWRT Linux OS for easy development.

Features/Benefits

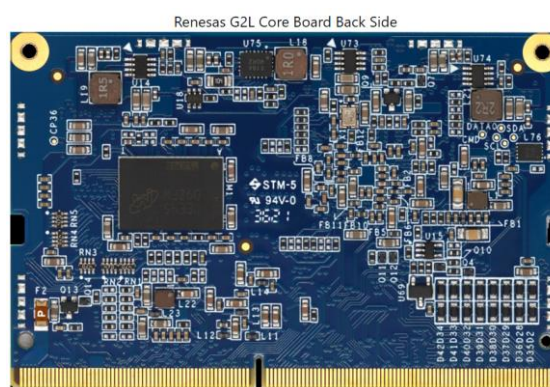
- CPU: Renesas RZ/G2L (64bit MPU)
- Architecture: Cortex A55 x 2 + Cortex M33
- Frequency: 1.2GHz
- RAM: 1GB / 2GB DDR4
- Flash: 4~64GB eMMC (Typical 4GB)
- Operating System: Linux

Diagrams / Graphics

RZ/G2L Ariaboard Core Board (Front)



RZ/G2L Ariaboard Board (Back)

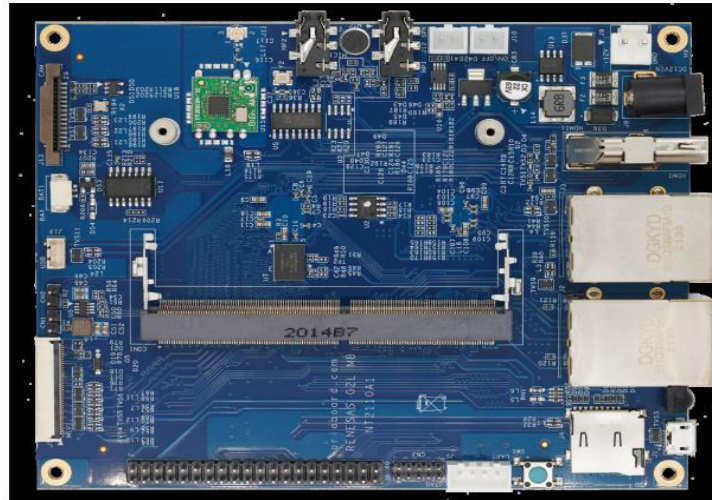


Target Markets and Applications

- Smart Transportation
- Industrial Automation
- Human Machine Interface (HMI)
- Medical Equipment
- Gateway

Novotech RZ/G2L Ariaboard Carrier Board :

Renesas G2L Carrier Board



Novotech RZ/G2L Ariaboard Specification:

Specs	Value
CPU	
CPU Name	Renesas RZ/G2L
CPU Type	Cortex™-A55 MPCore™
CPU Cores	Dual Core
CPU Clock	1.2GHz
ECC Cache	Supported
Memory	
RAM	1024 or 2048 MB DDR4
Flash	4-64GB eMMC (Typical: 4GB)
Multimedia	
Video Encode / Decode	1080p60 H.265 Decode, 1080p30 H.264 Encode
Camera Interfaces	1x CSI
Networking	
Ethernet	1 Gbps Ethernet, x1 expandable with RGMII
Audio	
Audio	Ti TLV320AIC3106 Low-Power Stereo Audio CODEC
Microphone	Analog I/O
Digital audio serial interface	S/PDIF
Line In/Out	Yes
Connectivity	
SD / MMC	x2
USB Host / Device	USB 2.0 : 1x Host, USB 2.0 : 1x OTG
UART	x4, up to 3.6 Mbps
I2C	x2
SPI	x2
RTC	x1, external
Power Input	5v DC
Power Consumption (Full)	2 – 4w
Operation Temperature Range	-40c to 80c

Learn more: https://ariaboard.com/products/renesas_g2l.html