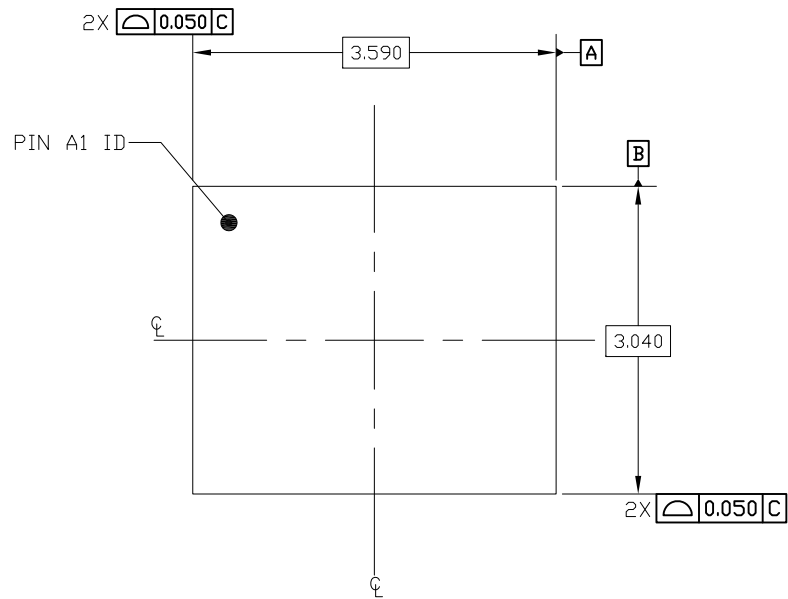


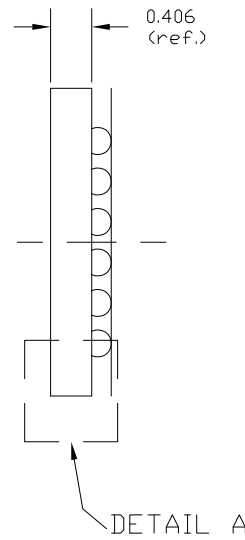
| REVISIONS HISTORY | | | |
|--|-----|-----------------|--------|
| DATE CREATED | REV | DESCRIPTION | AUTHOR |
| 11/02/16 | 00 | INITIAL RELEASE | CM |
| NOTE: REFER TO DCP FOR OFFICIAL RELEASE DATE | | | |

NOTES:

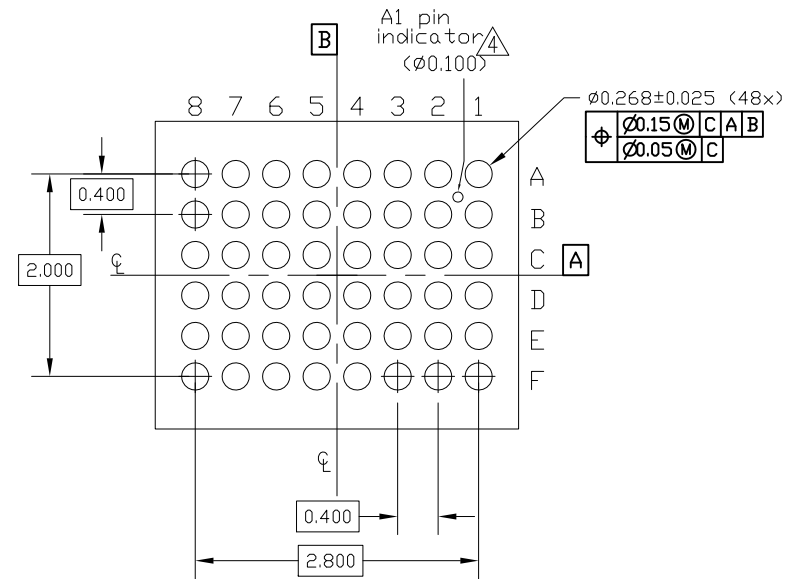
1. ALL DIMENSIONS AND TOLERANCES ARE PER ASME Y14.5M-1994.
 2. ALL DIMENSIONS ARE IN MILLIMETERS.
- △ SEATING PLANE AND PRIMARY DATUM -C- ARE DEFINED BY THE CONTACT POINTS OF THREE OR MORE SOLDER BALLS THAT SUPPORT THE DEVICE WHEN PLACED ON A TOP OF A PLANAR SURFACE.
 - △ BOTTOM PIN#1 INDICATOR OPTIONAL.



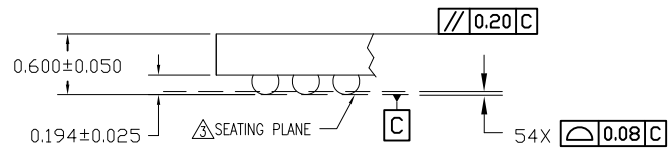
TOP VIEW




DETAIL A



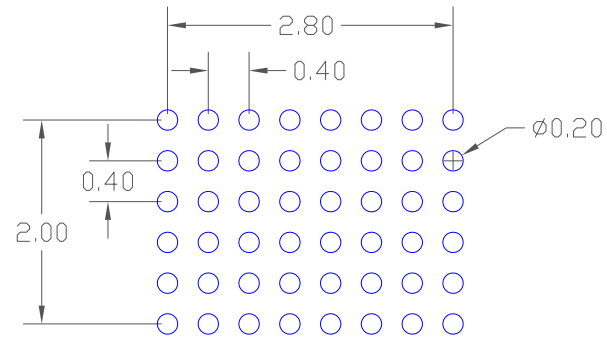
BOTTOM VIEW



DETAIL A
(ROTATED 90 DEG CW)

| | | |
|--|-------------|---|
| TOLERANCES UNLESS OTHERWISE SPECIFIED | |  6024 Silver Creek Valley Road, San Jose, CA 95138 PHONE: (408) 284-8200 FAX: (408) 284-3572 |
| DECIMAL : | .X # | |
| | .XX # | |
| | .XXX # | |
| ANGLE : | ± | |
| ANGULAR : | ± | |
| TITLE AHG48 PACKAGE OUTLINE 3.590x3.040mm BODY 0.4mm PITCH DSBGA | | |
| SIZE | DRAWING No. | REV |
| C | PSC-4669 | 00 |
| DO NOT SCALE DRAWING | | SHEET 1 OF 2 |


| DATE CREATED | REVISIONS HISTORY | | |
|--|-------------------|-----------------|--------|
| | REV | DESCRIPTION | AUTHOR |
| 11/02/16 | 00 | INITIAL RELEASE | CM |
| NOTE: REFER TO DCP FOR OFFICIAL RELEASE DATE | | | |



RECOMMENDED LAND PATTERN DIMENSION

NOTE:

1. ALL DIMENSIONS ARE IN MM, ANGLES IN DEGREES.
2. TOP DOWN VIEW, AS VIEW ON PCB.
3. NSMD LAND PATTERN ASSUMED.
4. LAND PATTERN RECOMMENDATION AS PER IPC-7351
GENERIC REQUIREMENT FOR SURFACE MOUNT DESIGN AND LAND PATTERN.

| | | | |
|--|-------------|--|--------------|
| TOLERANCES UNLESS OTHERWISE SPECIFIED DECIMAL : .X * .XX * .XXX * ANGLE : * ANGULAR : * | |  6024 Silver Creek Valley Road, San Jose, CA 95138 PHONE: (408) 284-8200 FAX: (408) 284-3572 www.IDT.com | |
| TITLE AHG48 PACKAGE OUTLINE 3.590x3.040mm BODY 0.4mm PITCH DSBGA | | | |
| SIZE | DRAWING No. | REV | |
| C | PSC-4669 | 00 | |
| DO NOT SCALE DRAWING | | | SHEET 2 OF 2 |