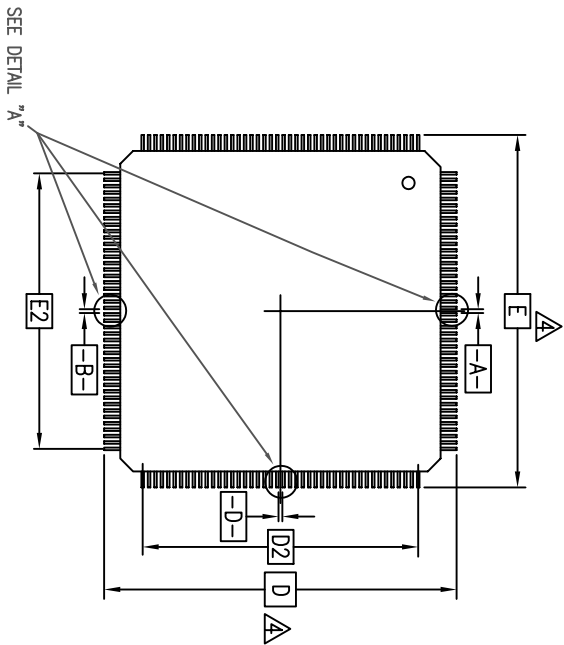
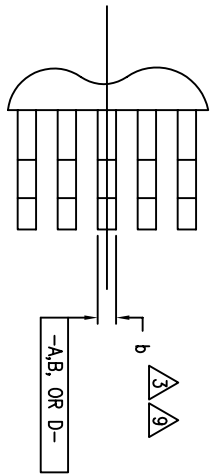
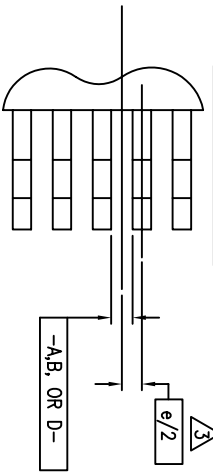
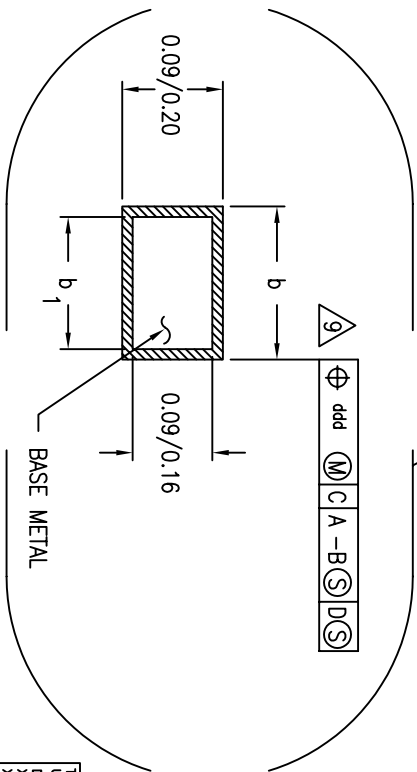
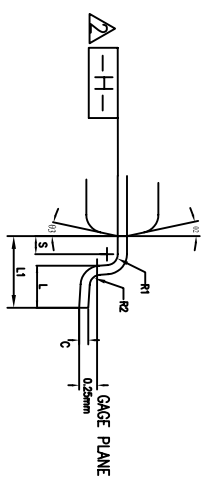
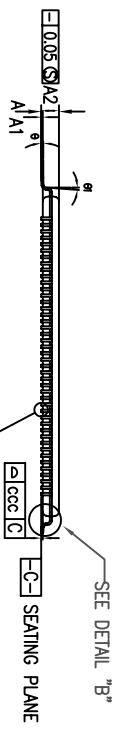
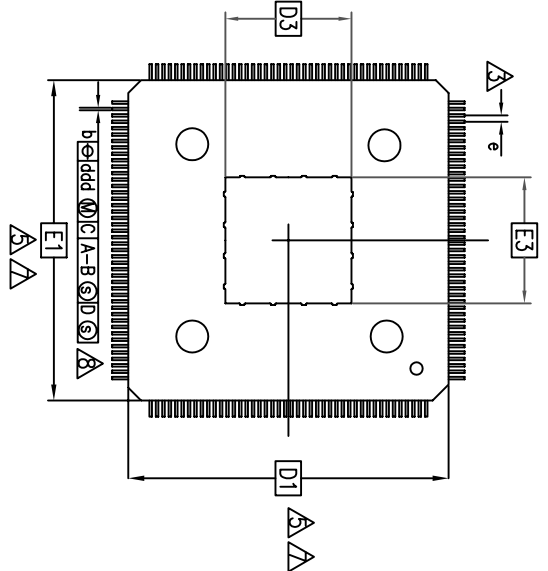


TOP SIDE



BOTTOM SIDE



TOLERANCES UNLESS SPECIFIED			6024 SILVER CREEK VALLEY ROAD, SAN JOSE, CA 95138	
DECIMAL	ANGULAR		PHONE: (408) 294-8200	
XXX±	F	WWW.IDT.COM	FAX: (408) 294-3572	
APPROVALS	DATE	TITLE	0.40 PITCH	
DRAWN	12/07/10	20X20X1.0 mm BODY		
CHECKED		7.87X7.87 mm EPAD		
SIZE	DRAWING No.	PSC-4337	REV	01
DO NOT SCALE DRAWING			SHEET 1 OF 4	

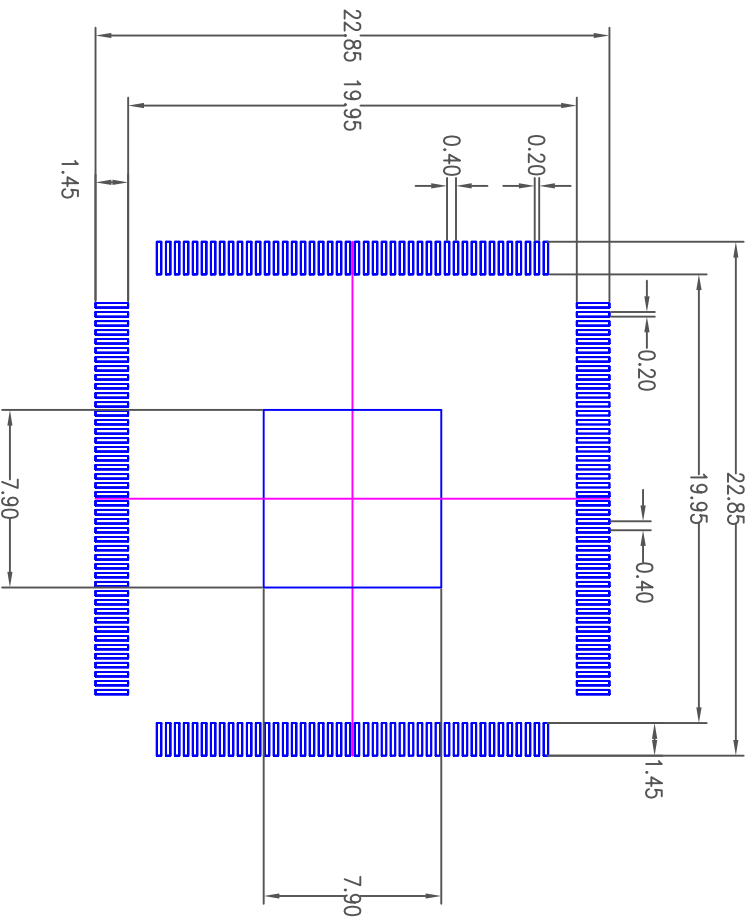
NOTES:

1. ALL DIMENSIONING AND TOLERANCING CONFORM TO ANSI Y14.5M-1994.
 - △ DATUM PLANE $\boxed{-H-}$ LOCATED AT MOLD PARTING LINE AND COINCIDENT WITH LEAD, WHERE LEAD EXITS PLASTIC BODY AT BOTTOM OF PARTING LINE.
 - △ DATUMS $\boxed{A-B}$ AND $\boxed{-D-}$ TO BE DETERMINED AT CENTERLINE BETWEEN LEADS WHERE LEADS EXIT PLASTIC BODY AT DATUM PLANE $\boxed{-H-}$ TO BE DETERMINED AT SEATING PLANE $\boxed{-C-}$.
 - △ DIMENSIONS D1 AND E1 DO NOT INCLUDE MOLD PROTRUSION. ALLOWABLE MOLD PROTRUSION IS 0.25 MM ON D1 AND E1 DIMENSIONS.
 - △ "N" IS THE TOTAL NUMBER OF TERMINALS. THESE DIMENSIONS TO BE DETERMINED AT DATUM PLANE $\boxed{-H-}$. DIMENSION b DOES NOT INCLUDE DAMBAR PROTRUSION. ALLOWABLE DAMBAR PROTRUSION SHALL BE 0.08mm TOTAL IN EXCESS OF THE b DIMENSION AT MAXIMUM MATERIAL CONDITION. DAMBAR CANNOT BE LOCATED ON THE LOWER RADIUS OR THE FOOT. MINIMUM SPACE BETWEEN PROTRUSION AND AN ADJACENT LEAD IS 0.07mm FOR 0.4mm AND 0.5mm PITCH PACKAGES.
 - 9. CONTROLLING DIMENSION: MILLIMETER.
 - 10. MAXIMUM ALLOWABLE DIE THICKNESS TO BE ASSEMBLED IN THIS PACKAGE FAMILY IS 0.46 MM (SINGLE DIE), 0.22 MM (2-STACK DIE).
 - 11. A1 IS DEFINED AS THE DISTANCE FROM THE SEATING PLANE TO THE LOWEST POINT OF THE PACKAGE BODY.
 - 12. EXPOSED PAD SHALL BE COPLANAR WITH BOTTOM OF PACKAGE WITHIN 0.05.

SYMBOL	JEDEC VARIATION			NOTE
	MIN.	NOM.	MAX.	
A	1.00	1.10	1.20	12
A1	0.05	0.10	0.15	
A2	0.95	1.00	1.05	
D	22.00 BSC.			4
D1	20.00 BSC.			7
E	22.00 BSC.			4
E1	20.00 BSC.			7
D3	7.82	7.87	7.92	
E3	7.82	7.87	7.92	
R2	0.08	—	0.20	
R1	0.08	—	—	
θ	0°	3.5°	7°	
θ1	0°	—	—	
θ2	11°	12°	13°	
θ3	11°	—	13°	
C	0.09	—	0.20	
L	0.45	0.60	0.75	
L1	1.00 REF			
S	0.20	—	—	

SYMBOL	176L MILLIMETER		
	MIN.	NOM.	MAX.
b	0.13	0.16	0.23
e	0.40 BSC.		
D2	17.20		
E2	17.20		
TOLERANCES OF FORM AND POSITION			
QQQ	0.20		
bbb	0.20		
ccc	0.08		
ddd	0.07		

TOLERANCES UNLESS SPECIFIED		6024 SILVER CREEK VALLEY ROAD, SAN JOSE, CA 95138	
DECIMAL	ANGULAR	PHONE: (408) 284-8200	
XXX±	±	FAX: (408) 284-3872	
XXXX±			
APPROVALS	DATE	WWW.IDT.COM	
DRAWN <i>gb</i>	12/07/10	TITLE EG/EGG176 0.40 PITCH	
CHECKED		20X20X1.0 mm BODY	
		7.87X7.87 mm EPAD	
SIZE	DRAWING No.	REV	
C	PSC-4337	01	
DO NOT SCALE DRAWING			SHEET 2 OF 4



RECOMMENDED LAND PATTERN DIMENSION

NOTE:

- 1) ALL dimensions are in mm, Angles in degrees.
- 2) Top down view, as view on PCB.
- 3) NSMD Land Pattern Assumed
- 4) Land Pattern Recommendation as per IPC-7351B generic requirement for surface mount design and Land Pattern.

TOLERANCES UNLESS SPECIFIED		6024 SILVER CREEK	
DECIMAL	ANGULAR	VALLEY ROAD, SAN JOSE,	
XXX±	±	CA 95138	
XXXX±		PHONE: (408) 284-8200	
XXXX±		FAX: (408) 284-3572	
APPROVALS	DATE	www.IDT.com	
DRAWN <i>gy</i>	12/07/10	EG/EGG176 0.40 PITCH	
CHECKED		20X20X1.0 mm BODY	
		7.87X7.87 mm EPAD	
SIZE	DRAWING No.	PSC-4337	
C		REV	
		01	
DO NOT SCALE DRAWING		SHEET 3 OF 4	

